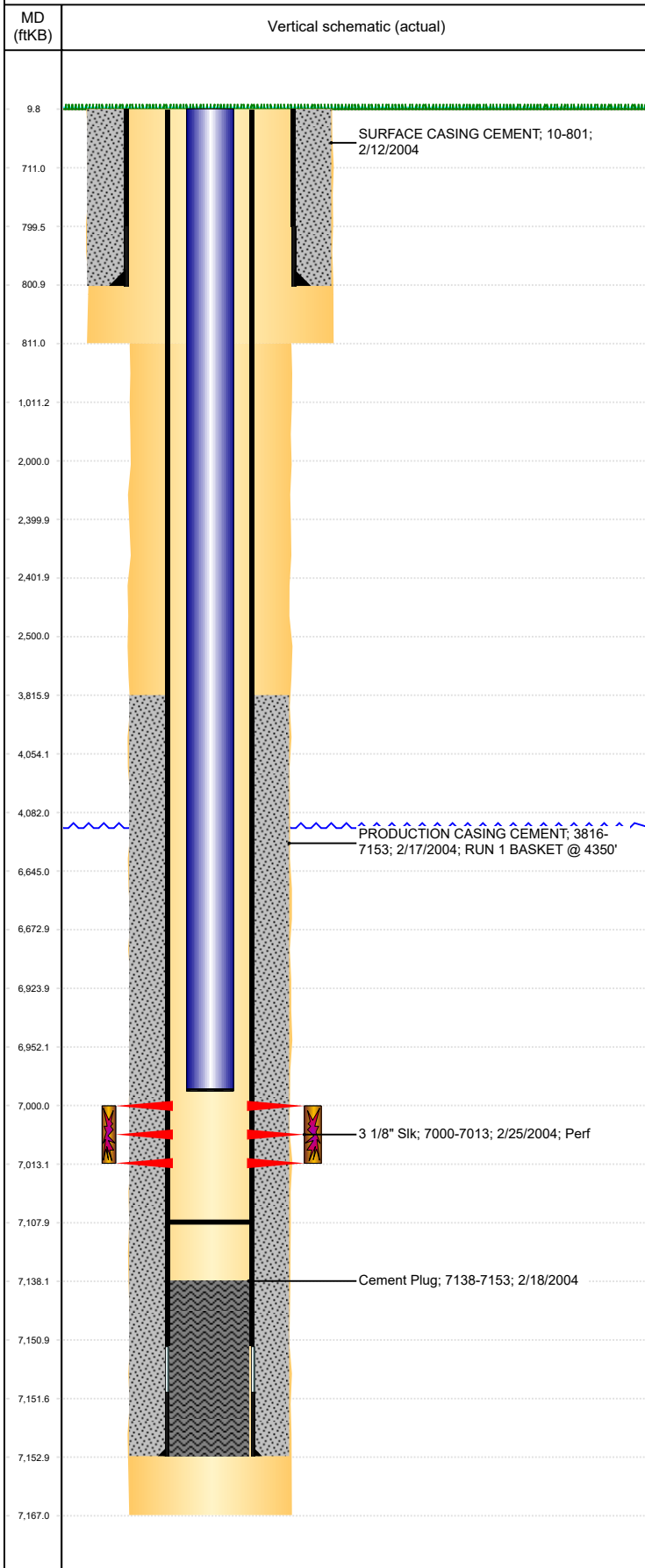




# P&A Wellbore For State

Well Name: JOHNSON 29-13

Land, Original Hole, 10/19/2022 1:29:04 PM



Well Header									
Surface UWI 0512320444			Business Unit Rockies			Gov Auth Dist		Prod Tree Loc Land	
Orig. KB to Gnd (ft) 10.00		Original Spud Date 2/12/2004		Abandon Date		Well Sub-Status PR		High... N	
Comment DISCREPANCY: TD DRL RPT 7153', ST RPT/LOGS 7167'. USED 7167'. COMP DATE - COMP RPT 2/27/04, ST RPT 3/6/04. USED STATE REPORT									
Surface Location (Congressional)									
Qtr 3 SW	Qtr 4 NE	Section 29	Twonshp 4	Twonsh... N	Range 64	Rng E/... W	Latitude (°) 40.2852	Longitude (°) -104.57187	
Wellbore Sections									
Section Des			Hole Size (in)			Act Top (ftKB)		Act Btm (ftKB)	
SURFACE			12 1/4			10.0		811.0	
PRODUCTION			7 7/8			811.0		7,167.0	
Casing Strings									
Csg Des		Run Date		OD (in)	Wt/Len (lb/ft)	Grade	Top Depth (MD) (ftKB)	Set Depth (MD) (ftKB)	
Surface		2/12/2004		8 5/8	24.00		10	801	
Production Casing		2/17/2004		4 1/2	11.60	I-80	10	7153	
Cement									
Des				Start Date		Top (ftKB)		Btm (ftKB)	
SURFACE CASING CEMENT				2/12/2004		10.0		801.0	
PRODUCTION CASING CEMENT				2/17/2004		3,816.0		7,153.0	
Cement Plug				2/18/2004		7,138.0		7,153.0	
Zone Statuses									
Zone Name		Status Date	Status	Fluid Type	Job			Prod Method	
CODELL		3/23/2008	PR		RE-FRAC, 3/21/2008 00:00			Flowing	
CODELL		4/15/2010	PR					Flowing	
Perforation Data									
Linked Zone			Explosive Type	Entered Shot Total	Top (ftKB)		Btm (ftKB)		Date
CODELL, Original Hole					7,000.0		7,013.0		2/25/2004
Stimulation Intervals									
Zone				Start Date		Top (ftKB)		Btm (ftKB)	
CODELL, Original Hole				3/21/2008		7,000.0		7,013.0	
CODELL, Original Hole				2/27/2004		7,000.0		7,013.0	
Other In Hole									
Run Date		Des			Make		OD (in)	Top (ftKB)	Btm (ftKB)
Logs									
Date		Type					Depth Top (MD) (ftKB)		Btm (ftKB)
2/17/2004		COMPENSATED DENSITY					4,300		7,147.0
2/17/2004		INDUCTION					801		7,167.0
2/24/2004		CEMENT BOND					3,673		7,104.0
Plug Back Total Depths									
Date		Type			Com				PBTD (ftKB)
2/17/2004		FLOAT COLLAR			TOP OF FLOAT COLLAR				7,138
2/24/2004		FILL			DEPTH LOGGER ON CBL				7,108