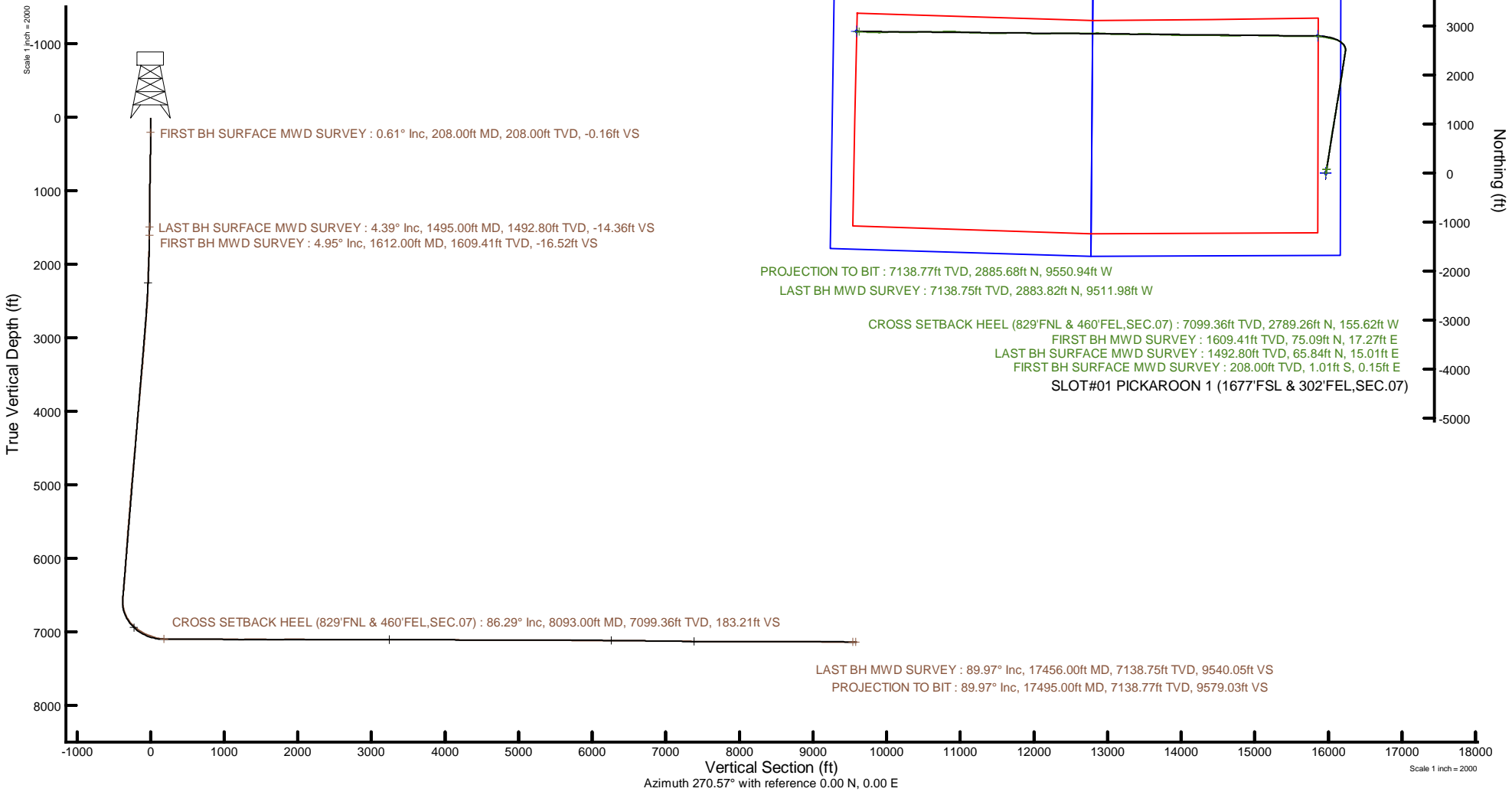
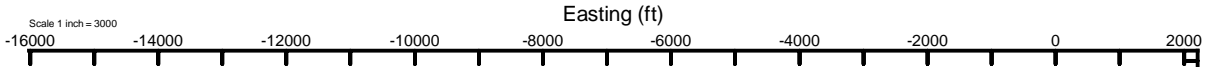


BAYSWATER E&P, LLC



Location: COLORADO Slot: SLOT#01 PICKAROON 1 (1677'FSL & 302'FEL,SEC.07)
 Field: WELD COUNTY (NAD83/TRUE NORTH) Well: PICKAROON 1
 Facility: SEC.07-T07N-R64W Wellbore: PICKAROON 1 PWB

Plot reference wellpath is PICKAROON 1 PWP RevB.1	Grid System: NAD83 / Lambert Colorado SP, Northern Zone (501), US feet
True vertical depths are referenced to Akita 518 (16) (KB)	North Reference: True north
Reference wellpath measured depths are referenced to Akita 518 (16) (KB)	Scale: True distance
Akita 518 (16) (KB) to Mean Sea Level: 4964 feet	Coordinates are in feet referenced to Slot
Mean Sea Level to Ground level (At Slot: SLOT#01 PICKAROON 1 (1677'FSL & 302'FEL,SEC.07)): -4948 feet	Depths are in feet
Offset wellpath MDs are referenced to each path's default MD datum	Created by: painsetr on 2022-08-09; Database: WA, Denver





Actual Wellpath Report

PICKAROON 1 AWP

Page 1 of 10



REFERENCE WELLPATH IDENTIFICATION			
Operator	BAYSWATER E&P, LLC	Well	PICKAROON 1
Field	WELD COUNTY (NAD83/TRUE NORTH)	API	0512348023
Facility	SEC.07-T07N-R64W	Wellbore	PICKAROON 1 AWB
Slot	SLOT#01 PICKAROON 1 (1677'FSL & 302'FEL,SEC.07)		

REPORT SETUP INFORMATION			
Projection System	NAD83 / Lambert Colorado SP, Northern Zone (501), US feet	Software System	WellArchitect® 6.0
North Reference	True	User	Painsetr
Scale	0.999974	Report Generated	8/9/2022 at 10:46:43 AM
Convergence at slot	0.59° East	Database	WA_Denver

WELLPATH LOCATION	Local coordinates		Grid coordinates		Geographic coordinates	
	North[ft]	East[ft]	Easting[US ft]	Northing[US ft]	Latitude	Longitude
Slot Location	0.00	0.00	3254446.41	1457165.51	40.5847100°	-104.5838900°
Facility Reference Pt			3254446.41	1457165.51	40.5847100°	-104.5838900°
Field Reference Pt			3174587.00	1430859.71	40.5144139°	-104.8720750°

WELLPATH DATUM			
Calculation method	Minimum curvature	Akita 518 (16') (KB) to Facility Vertical Datum	4964.00ft
Horizontal Reference Pt	Slot	Akita 518 (16') (KB) to Mean Sea Level	4964.00ft
Vertical Reference Pt	Akita 518 (16') (KB)	Akita 518 (16') (KB) to Ground Level at Slot (SLOT#01 PICKAROON 1 (1677'FSL & 302'FEL,SEC.07))	16.00ft
MD Reference Pt	Akita 518 (16') (KB)	Section Origin	N 0.00, E 0.00 ft
Field Vertical Reference	Mean Sea Level	Section Azimuth	270.57°

REFERENCE WELLPATH IDENTIFICATION			
Operator	BAYSWATER E&P, LLC	Well	PICKAROON 1
Field	WELD COUNTY (NAD83/TRUE NORTH)	API	0512348023
Facility	SEC.07-T07N-R64W	Wellbore	PICKAROON 1 AWB
Slot	SLOT#01 PICKAROON 1 (1677'FSL & 302'FEL,SEC.07)		

WELLPATH DATA (201 stations) † = interpolated, ‡ = extrapolated station												
MD [ft]	Inclination [°]	Azimuth [°]	TVD [ft]	Vert Sect [ft]	North [ft]	East [ft]	Grid East [US ft]	Grid North [US ft]	Latitude	Longitude	DLS [°/100ft]	Comments
0.00†	0.000	171.440	0.00	0.00	0.00	0.00	3254446.41	1457165.51	40.5847100	-104.5838900	0.00	
16.00	0.000	171.440	16.00	0.00	0.00	0.00	3254446.41	1457165.51	40.5847100	-104.5838900	0.00	
208.00	0.610	171.440	208.00	-0.16	-1.01	0.15	3254446.57	1457164.51	40.5847072	-104.5838895	0.32	FIRST BH SURFACE MWD SURVEY
300.00	0.520	33.300	299.99	-0.47	-1.15	0.45	3254446.87	1457164.37	40.5847069	-104.5838884	1.15	
387.00	1.160	3.480	386.99	-0.72	0.06	0.72	3254447.13	1457165.58	40.5847102	-104.5838874	0.87	
475.00	2.430	17.200	474.94	-1.30	2.73	1.33	3254447.71	1457168.26	40.5847175	-104.5838852	1.51	
564.00	2.610	19.190	563.85	-2.49	6.45	2.55	3254448.89	1457171.99	40.5847277	-104.5838808	0.22	
652.00	2.750	18.220	651.76	-3.77	10.35	3.87	3254450.17	1457175.90	40.5847384	-104.5838761	0.17	
741.00	2.890	20.300	740.65	-5.18	14.48	5.32	3254451.58	1457180.05	40.5847497	-104.5838709	0.19	
828.00	3.240	18.250	827.53	-6.66	18.87	6.85	3254453.06	1457184.46	40.5847618	-104.5838653	0.42	
917.00	3.970	20.000	916.35	-8.45	24.16	8.69	3254454.85	1457189.76	40.5847763	-104.5838587	0.83	
1006.00	4.230	10.840	1005.12	-10.06	30.27	10.36	3254456.46	1457195.89	40.5847931	-104.5838527	0.79	
1093.00	4.140	1.760	1091.89	-10.70	36.57	11.06	3254457.09	1457202.19	40.5848104	-104.5838502	0.77	
1184.00	3.870	3.520	1182.67	-10.93	42.91	11.35	3254457.31	1457208.54	40.5848278	-104.5838491	0.33	
1273.00	4.060	7.810	1271.46	-11.48	49.03	11.96	3254457.86	1457214.67	40.5848446	-104.5838469	0.40	
1361.00	4.510	11.160	1359.21	-12.51	55.51	13.06	3254458.89	1457221.16	40.5848624	-104.5838430	0.58	
1450.00	4.530	10.310	1447.93	-13.74	62.40	14.36	3254460.12	1457228.06	40.5848813	-104.5838383	0.08	
1495.00	4.390	10.940	1492.80	-14.36	65.84	15.01	3254460.73	1457231.51	40.5848907	-104.5838360	0.33	LAST BH SURFACE MWD SURVEY
1612.00	4.950	16.190	1609.41	-16.52	75.09	17.27	3254462.90	1457240.77	40.5849161	-104.5838278	0.60	FIRST BH MWD SURVEY
1701.00	7.860	9.160	1697.84	-18.47	84.79	19.31	3254464.84	1457250.49	40.5849427	-104.5838205	3.38	
1790.00	11.160	9.440	1785.61	-20.70	99.29	21.69	3254467.07	1457265.02	40.5849825	-104.5838119	3.71	
1878.00	12.130	8.020	1871.80	-23.22	116.85	24.37	3254469.57	1457282.61	40.5850307	-104.5838022	1.15	
1967.00	11.870	8.710	1958.85	-25.73	135.16	27.06	3254472.07	1457300.94	40.5850810	-104.5837926	0.33	
2054.00	11.630	9.220	2044.03	-28.31	152.66	29.82	3254474.65	1457318.47	40.5851290	-104.5837826	0.30	
2142.00	11.910	8.660	2130.18	-30.93	170.39	32.61	3254477.26	1457336.23	40.5851777	-104.5837726	0.34	
2230.00	12.430	8.820	2216.20	-33.56	188.73	35.43	3254479.89	1457354.59	40.5852280	-104.5837624	0.59	
2317.00	13.610	8.560	2300.96	-36.33	208.10	38.39	3254482.65	1457374.00	40.5852812	-104.5837518	1.36	
2404.00	13.600	9.060	2385.52	-39.26	228.32	41.53	3254485.57	1457394.25	40.5853367	-104.5837405	0.14	
2493.00	16.170	8.610	2471.53	-42.54	250.91	45.03	3254488.84	1457416.87	40.5853987	-104.5837279	2.89	
2582.00	23.440	9.340	2555.21	-46.98	280.67	49.76	3254493.27	1457446.68	40.5854804	-104.5837108	8.17	

REFERENCE WELLPATH IDENTIFICATION			
Operator	BAYSWATER E&P, LLC	Well	PICKAROON 1
Field	WELD COUNTY (NAD83/TRUE NORTH)	API	0512348023
Facility	SEC.07-T07N-R64W	Wellbore	PICKAROON 1 AWB
Slot	SLOT#01 PICKAROON 1 (1677'FSL & 302'FEL,SEC.07)		

WELLPATH DATA (201 stations)												
MD [ft]	Inclination [°]	Azimuth [°]	TVD [ft]	Vert Sect [ft]	North [ft]	East [ft]	Grid East [US ft]	Grid North [US ft]	Latitude	Longitude	DLS ["/100ft]	Comments
2669.00	25.340	8.880	2634.44	-52.32	316.15	55.45	3254498.58	1457482.21	40.5855778	-104.5836904	2.19	
2757.00	27.210	9.010	2713.34	-57.99	354.63	61.51	3254504.24	1457520.75	40.5856834	-104.5836686	2.13	
2845.00	30.730	8.080	2790.32	-63.89	396.77	67.82	3254510.12	1457562.95	40.5857991	-104.5836458	4.03	
2933.00	30.410	8.600	2866.09	-69.94	441.05	74.31	3254516.15	1457607.30	40.5859206	-104.5836225	0.47	
3021.00	30.430	7.320	2941.98	-75.67	485.18	80.48	3254521.87	1457651.49	40.5860417	-104.5836003	0.74	
3110.00	30.500	8.540	3018.69	-81.46	529.87	86.70	3254527.63	1457696.24	40.5861644	-104.5835778	0.70	
3197.00	30.680	8.460	3093.58	-87.57	573.66	93.25	3254533.72	1457740.09	40.5862846	-104.5835543	0.21	
3285.00	30.580	8.550	3169.30	-93.76	618.00	99.88	3254539.89	1457784.50	40.5864063	-104.5835304	0.13	
3374.00	30.250	8.790	3246.06	-100.11	662.54	106.67	3254546.23	1457829.10	40.5865286	-104.5835059	0.40	
3462.00	30.490	6.830	3321.98	-105.72	706.62	112.71	3254551.81	1457873.24	40.5866495	-104.5834842	1.16	
3550.00	30.490	9.750	3397.82	-111.71	750.79	119.15	3254557.79	1457917.47	40.5867708	-104.5834610	1.68	
3639.00	29.240	10.230	3475.00	-118.97	794.43	126.83	3254565.02	1457961.19	40.5868906	-104.5834334	1.43	
3727.00	28.040	10.300	3552.23	-126.07	835.94	134.35	3254572.11	1458002.77	40.5870045	-104.5834063	1.36	
3815.00	29.080	10.120	3629.52	-133.12	877.34	141.81	3254579.14	1458044.25	40.5871181	-104.5833794	1.19	
3902.00	28.730	10.580	3705.68	-140.26	918.71	149.36	3254586.26	1458085.69	40.5872317	-104.5833522	0.48	
3990.00	29.150	9.910	3782.69	-147.42	960.61	156.93	3254593.40	1458127.67	40.5873467	-104.5833250	0.60	
4078.00	29.520	9.800	3859.41	-154.38	1003.09	164.31	3254600.34	1458170.22	40.5874633	-104.5832984	0.42	
4167.00	29.410	9.750	3936.90	-161.38	1046.23	171.74	3254607.33	1458213.43	40.5875817	-104.5832717	0.13	
4256.00	29.450	9.030	4014.41	-168.09	1089.37	178.88	3254614.02	1458256.65	40.5877001	-104.5832460	0.40	
4345.00	29.440	9.310	4091.92	-174.63	1132.57	185.85	3254620.54	1458299.91	40.5878187	-104.5832209	0.16	
4434.00	29.500	9.580	4169.40	-181.39	1175.76	193.04	3254627.28	1458343.17	40.5879372	-104.5831950	0.16	
4522.00	29.720	9.540	4245.91	-188.19	1218.63	200.26	3254634.06	1458386.12	40.5880549	-104.5831690	0.25	
4611.00	29.420	9.910	4323.32	-195.18	1261.92	207.68	3254641.03	1458429.48	40.5881737	-104.5831423	0.39	
4700.00	29.400	9.540	4400.85	-202.13	1305.00	215.06	3254647.97	1458472.63	40.5882920	-104.5831157	0.21	
4789.00	29.140	9.240	4478.48	-208.81	1347.93	222.16	3254654.62	1458515.63	40.5884098	-104.5830901	0.34	
4878.00	29.290	9.650	4556.16	-215.51	1390.78	229.29	3254661.31	1458558.55	40.5885274	-104.5830645	0.28	
4965.00	29.040	10.020	4632.13	-222.34	1432.56	236.53	3254668.12	1458600.40	40.5886421	-104.5830384	0.35	
5054.00	29.560	9.330	4709.75	-229.23	1475.49	243.85	3254674.99	1458643.40	40.5887599	-104.5830120	0.70	
5143.00	29.650	10.320	4787.13	-236.31	1518.81	251.35	3254682.04	1458686.80	40.5888788	-104.5829850	0.56	
5233.00	29.080	10.120	4865.56	-243.71	1562.24	259.18	3254689.43	1458730.31	40.5889981	-104.5829568	0.64	

REFERENCE WELLPATH IDENTIFICATION			
Operator	BAYSWATER E&P, LLC	Well	PICKAROON 1
Field	WELD COUNTY (NAD83/TRUE NORTH)	API	0512348023
Facility	SEC.07-T07N-R64W	Wellbore	PICKAROON 1 AWB
Slot	SLOT#01 PICKAROON 1 (1677'FSL & 302'FEL,SEC.07)		

WELLPATH DATA (201 stations)												
MD [ft]	Inclination [°]	Azimuth [°]	TVD [ft]	Vert Sect [ft]	North [ft]	East [ft]	Grid East [US ft]	Grid North [US ft]	Latitude	Longitude	DLS ["/100ft]	Comments
5323.00	29.460	10.240	4944.07	-251.06	1605.56	266.96	3254696.76	1458773.70	40.5891169	-104.5829288	0.43	
5411.00	29.350	10.620	5020.74	-258.46	1648.05	274.78	3254704.14	1458816.27	40.5892336	-104.5829007	0.25	
5499.00	29.060	8.900	5097.55	-265.32	1690.36	282.06	3254710.98	1458858.65	40.5893497	-104.5828744	1.01	
5587.00	28.630	8.020	5174.63	-271.15	1732.35	288.31	3254716.79	1458900.70	40.5894650	-104.5828520	0.69	
5674.00	29.080	8.300	5250.83	-276.70	1773.91	294.27	3254722.33	1458942.32	40.5895790	-104.5828305	0.54	
5761.00	27.260	8.450	5327.52	-282.28	1814.54	300.25	3254727.89	1458983.01	40.5896906	-104.5828090	2.09	
5849.00	28.730	8.990	5405.22	-288.14	1855.37	306.51	3254733.73	1459023.90	40.5898026	-104.5827864	1.70	
5938.00	28.580	9.700	5483.32	-294.65	1897.48	313.44	3254740.22	1459066.08	40.5899182	-104.5827614	0.42	
6027.00	29.640	9.990	5561.08	-301.63	1940.14	320.85	3254747.19	1459108.81	40.5900353	-104.5827348	1.20	
6115.00	29.780	8.280	5637.51	-308.13	1983.20	327.77	3254753.66	1459151.94	40.5901535	-104.5827099	0.98	
6202.00	29.590	7.280	5713.10	-313.54	2025.88	333.60	3254759.06	1459194.68	40.5902707	-104.5826888	0.61	
6291.00	29.560	6.810	5790.50	-318.50	2069.48	338.99	3254763.99	1459238.33	40.5903903	-104.5826694	0.26	
6379.00	29.560	6.860	5867.05	-323.24	2112.58	344.16	3254768.71	1459281.48	40.5905086	-104.5826508	0.03	
6467.00	28.130	7.250	5944.13	-328.03	2154.72	349.37	3254773.49	1459323.67	40.5906243	-104.5826321	1.64	
6554.00	27.590	9.590	6021.04	-333.58	2194.93	355.31	3254779.02	1459363.94	40.5907347	-104.5826107	1.40	
6642.00	28.940	8.370	6098.55	-339.66	2236.09	361.81	3254785.09	1459405.16	40.5908476	-104.5825873	1.67	
6731.00	28.710	8.990	6176.52	-345.72	2278.51	368.28	3254791.12	1459447.64	40.5909641	-104.5825640	0.42	
6820.00	29.500	8.500	6254.29	-351.87	2321.29	374.86	3254797.26	1459490.49	40.5910815	-104.5825403	0.93	
6908.00	28.770	8.890	6331.15	-357.93	2363.65	381.34	3254803.30	1459532.91	40.5911977	-104.5825170	0.86	
6997.00	28.560	9.980	6409.24	-364.51	2405.76	388.34	3254809.86	1459575.09	40.5913133	-104.5824918	0.63	
7085.00	30.050	9.300	6485.98	-371.30	2448.22	395.54	3254816.63	1459617.62	40.5914299	-104.5824658	1.73	
7173.00	31.240	6.200	6561.69	-376.88	2492.66	401.57	3254822.19	1459662.12	40.5915519	-104.5824441	2.25	
7259.00	31.110	349.280	6635.42	-374.72	2536.74	399.84	3254820.01	1459706.18	40.5916729	-104.5824503	10.16	
7346.00	30.930	333.030	6710.11	-359.96	2578.83	385.49	3254805.23	1459748.11	40.5917884	-104.5825020	9.60	
7434.00	36.980	322.000	6783.14	-332.95	2619.92	358.89	3254778.20	1459788.93	40.5919012	-104.5825978	9.79	
7523.00	43.820	311.960	6850.95	-293.06	2661.71	319.41	3254738.29	1459830.30	40.5920159	-104.5827399	10.59	
7611.00	49.780	299.090	6911.29	-240.52	2698.53	267.23	3254685.74	1459866.58	40.5921169	-104.5829278	12.61	
7699.00	52.780	284.970	6966.50	-176.85	2723.99	203.82	3254622.07	1459891.39	40.5921868	-104.5831561	12.96	
7785.00	62.250	280.710	7012.65	-106.04	2739.95	133.16	3254551.25	1459906.62	40.5922306	-104.5834105	11.77	
7872.00	68.210	282.260	7049.09	-28.52	2755.70	55.79	3254473.73	1459921.57	40.5922739	-104.5836891	7.04	

REFERENCE WELLPATH IDENTIFICATION				
Operator	BAYSWATER E&P, LLC		Well	PICKAROON 1
Field	WELD COUNTY (NAD83/TRUE NORTH)		API	0512348023
Facility	SEC.07-T07N-R64W		Wellbore	PICKAROON 1 AWB
Slot	SLOT#01 PICKAROON 1 (1677'FSL & 302'FEL,SEC.07)			

WELLPATH DATA (201 stations) † = interpolated, ‡ = extrapolated station												
MD [ft]	Inclination [°]	Azimuth [°]	TVD [ft]	Vert Sect [ft]	North [ft]	East [ft]	Grid East [US ft]	Grid North [US ft]	Latitude	Longitude	DLS ["/100ft]	Comments
7960.00	74.420	280.470	7077.27	53.33	2772.09	-25.90	3254391.87	1459937.12	40.5923189	-104.5839832	7.31	
8049.00	82.500	276.580	7095.07	139.61	2784.97	-112.05	3254305.59	1459949.10	40.5923542	-104.5842935	10.04	
8093.00†	86.291	274.681	7099.36	183.21	2789.26	-155.62	3254261.98	1459952.94	40.5923660	-104.5844503	9.63	CROSS SETBACK HEEL (829'FNL & 460'FEL,SEC.07)
8136.00	90.000	272.840	7100.75	226.12	2792.08	-198.50	3254219.08	1459955.31	40.5923737	-104.5846047	9.63	
8224.00	89.820	270.240	7100.89	314.10	2794.44	-286.46	3254131.11	1459956.77	40.5923802	-104.5849214	2.96	
8312.00	89.540	268.750	7101.38	402.08	2793.67	-374.45	3254043.13	1459955.08	40.5923781	-104.5852383	1.72	
8400.00	89.690	269.050	7101.98	490.04	2791.98	-462.43	3253955.17	1459952.49	40.5923734	-104.5855550	0.38	
8488.00	89.600	270.530	7102.52	578.02	2791.65	-550.43	3253867.19	1459951.25	40.5923725	-104.5858719	1.68	
8576.00	89.600	270.780	7103.14	666.02	2792.66	-638.42	3253779.19	1459951.35	40.5923753	-104.5861887	0.28	
8663.00	89.600	270.310	7103.74	753.02	2793.49	-725.41	3253692.20	1459951.28	40.5923776	-104.5865020	0.54	
8750.00	89.420	271.060	7104.49	840.02	2794.53	-812.40	3253605.20	1459951.42	40.5923804	-104.5868152	0.89	
8838.00	89.880	272.550	7105.02	927.99	2797.30	-900.35	3253517.23	1459953.28	40.5923880	-104.5871319	1.77	
8925.00	89.970	272.200	7105.14	1014.95	2800.90	-987.28	3253430.27	1459955.99	40.5923979	-104.5874448	0.42	
9014.00	89.940	270.540	7105.21	1103.94	2803.03	-1076.25	3253341.29	1459957.20	40.5924037	-104.5877652	1.87	
9102.00	89.940	270.190	7105.30	1191.94	2803.59	-1164.25	3253253.29	1459956.85	40.5924052	-104.5880820	0.40	
9191.00	90.090	270.410	7105.28	1280.93	2804.06	-1253.25	3253164.29	1459956.40	40.5924065	-104.5884025	0.30	
9278.00	89.940	271.260	7105.25	1367.93	2805.33	-1340.24	3253077.30	1459956.77	40.5924100	-104.5887157	0.99	
9366.00	90.030	271.010	7105.28	1455.93	2807.07	-1428.22	3252989.31	1459957.60	40.5924148	-104.5890325	0.30	
9454.00	89.970	270.280	7105.28	1543.93	2808.06	-1516.21	3252901.31	1459957.68	40.5924175	-104.5893494	0.83	
9541.00	89.910	269.890	7105.37	1630.92	2808.19	-1603.21	3252814.31	1459956.91	40.5924178	-104.5896626	0.45	
9627.00	89.850	268.380	7105.55	1716.89	2806.89	-1689.20	3252728.35	1459954.73	40.5924142	-104.5899722	1.76	
9715.00	90.400	268.920	7105.36	1804.84	2804.82	-1777.18	3252640.40	1459951.74	40.5924085	-104.5902890	0.88	
9803.00	90.090	268.360	7104.98	1892.79	2802.73	-1865.15	3252552.46	1459948.75	40.5924028	-104.5906057	0.73	
9892.00	89.910	267.970	7104.98	1981.71	2799.88	-1954.10	3252463.54	1459944.98	40.5923949	-104.5909260	0.48	
9981.00	89.780	271.450	7105.22	2070.69	2799.43	-2043.09	3252374.57	1459943.61	40.5923937	-104.5912464	3.91	
10069.00	89.970	275.090	7105.41	2158.58	2804.45	-2130.93	3252286.68	1459947.72	40.5924074	-104.5915627	4.14	
10156.00	89.970	273.090	7105.46	2245.41	2810.65	-2217.70	3252199.85	1459953.03	40.5924244	-104.5918752	2.30	
10244.00	90.150	271.190	7105.37	2333.37	2813.94	-2305.64	3252111.89	1459955.40	40.5924334	-104.5921918	2.17	
10332.00	89.850	268.540	7105.37	2421.36	2813.73	-2393.63	3252023.90	1459954.29	40.5924328	-104.5925086	3.03	
10420.00	89.720	268.190	7105.70	2509.29	2811.22	-2481.59	3251935.97	1459950.87	40.5924259	-104.5928253	0.42	

REFERENCE WELLPATH IDENTIFICATION			
Operator	BAYSWATER E&P, LLC	Well	PICKAROON 1
Field	WELD COUNTY (NAD83/TRUE NORTH)	API	0512348023
Facility	SEC.07-T07N-R64W	Wellbore	PICKAROON 1 AWB
Slot	SLOT#01 PICKAROON 1 (1677'FSL & 302'FEL,SEC.07)		

WELLPATH DATA (201 stations)												
MD [ft]	Inclination [°]	Azimuth [°]	TVD [ft]	Vert Sect [ft]	North [ft]	East [ft]	Grid East [US ft]	Grid North [US ft]	Latitude	Longitude	DLS [°/100ft]	Comments
10508.00	89.750	269.610	7106.10	2597.25	2809.53	-2569.57	3251848.02	1459948.27	40.5924213	-104.5931421	1.61	
10595.00	89.820	271.540	7106.43	2684.25	2810.40	-2656.56	3251761.03	1459948.24	40.5924236	-104.5934554	2.22	
10683.00	89.880	271.600	7106.66	2772.23	2812.81	-2744.53	3251673.04	1459949.75	40.5924302	-104.5937721	0.10	
10771.00	89.880	270.950	7106.85	2860.23	2814.77	-2832.51	3251585.05	1459950.80	40.5924356	-104.5940889	0.74	
10858.00	89.820	268.650	7107.07	2947.21	2814.47	-2919.50	3251498.07	1459949.59	40.5924347	-104.5944021	2.64	
10946.00	89.720	269.710	7107.43	3035.18	2813.21	-3007.49	3251410.10	1459947.43	40.5924312	-104.5947189	1.21	
11035.00	89.820	271.830	7107.78	3124.18	2814.41	-3096.48	3251321.11	1459947.70	40.5924345	-104.5950393	2.38	
11123.00	89.820	272.890	7108.06	3212.13	2818.03	-3184.40	3251233.15	1459950.42	40.5924444	-104.5953559	1.20	
11211.00	89.850	271.600	7108.31	3300.09	2821.48	-3272.33	3251145.19	1459952.96	40.5924538	-104.5956725	1.47	
11300.00	89.820	272.820	7108.57	3389.05	2824.91	-3361.26	3251056.23	1459955.47	40.5924632	-104.5959927	1.37	
11388.00	89.910	272.940	7108.78	3476.98	2829.33	-3449.15	3250968.31	1459958.98	40.5924753	-104.5963092	0.17	
11476.00	89.720	273.690	7109.06	3564.88	2834.42	-3537.00	3250880.41	1459963.16	40.5924892	-104.5966255	0.88	
11559.00	89.820	271.820	7109.39	3647.81	2838.41	-3619.90	3250797.48	1459966.29	40.5925002	-104.5969240	2.26	
11646.00	89.720	269.500	7109.74	3734.81	2839.41	-3706.89	3250710.49	1459966.40	40.5925029	-104.5972372	2.67	
11734.00	89.660	268.030	7110.22	3822.76	2837.51	-3794.87	3250622.54	1459963.59	40.5924976	-104.5975540	1.67	
11823.00	89.820	267.080	7110.62	3911.64	2833.72	-3883.78	3250533.67	1459958.88	40.5924872	-104.5978742	1.08	
11911.00	89.660	267.740	7111.02	3999.50	2829.74	-3971.69	3250445.81	1459953.99	40.5924762	-104.5981907	0.77	
11997.00	89.780	270.300	7111.44	4085.46	2828.27	-4057.67	3250359.85	1459951.63	40.5924721	-104.5985003	2.98	
12086.00	89.660	271.040	7111.88	4174.46	2829.31	-4146.66	3250270.85	1459951.76	40.5924750	-104.5988207	0.84	
12173.00	89.660	270.910	7112.39	4261.46	2830.79	-4233.65	3250183.86	1459952.34	40.5924790	-104.5991339	0.15	
12261.00	89.880	271.950	7112.75	4349.44	2832.99	-4321.62	3250095.87	1459953.62	40.5924850	-104.5994507	1.21	
12349.00	89.720	275.450	7113.06	4437.30	2838.66	-4409.42	3250008.02	1459958.39	40.5925005	-104.5997668	3.98	
12439.00	89.720	275.280	7113.49	4526.98	2847.08	-4499.03	3249918.33	1459965.88	40.5925236	-104.6000894	0.19	
12527.00	89.720	273.920	7113.92	4614.76	2854.14	-4586.74	3249830.56	1459972.03	40.5925429	-104.6004053	1.55	
12615.00	89.750	268.920	7114.33	4702.72	2856.32	-4674.68	3249742.60	1459973.31	40.5925488	-104.6007219	5.68	
12703.00	89.600	266.240	7114.83	4790.59	2852.60	-4762.60	3249654.73	1459968.68	40.5925386	-104.6010385	3.05	
12792.00	89.690	268.220	7115.38	4879.44	2848.30	-4851.49	3249565.89	1459963.46	40.5925267	-104.6013585	2.23	
12880.00	89.690	269.460	7115.86	4967.39	2846.52	-4939.47	3249477.94	1459960.77	40.5925218	-104.6016753	1.41	
12967.00	89.850	270.590	7116.21	5054.39	2846.56	-5026.46	3249390.95	1459959.91	40.5925218	-104.6019886	1.31	
13056.00	89.880	271.330	7116.42	5143.38	2848.05	-5115.45	3249301.95	1459960.48	40.5925259	-104.6023090	0.83	

REFERENCE WELLPATH IDENTIFICATION			
Operator	BAYSWATER E&P, LLC	Well	PICKAROON 1
Field	WELD COUNTY (NAD83/TRUE NORTH)	API	0512348023
Facility	SEC.07-T07N-R64W	Wellbore	PICKAROON 1 AWB
Slot	SLOT#01 PICKAROON 1 (1677'FSL & 302'FEL,SEC.07)		

WELLPATH DATA (201 stations)												
MD [ft]	Inclination [°]	Azimuth [°]	TVD [ft]	Vert Sect [ft]	North [ft]	East [ft]	Grid East [US ft]	Grid North [US ft]	Latitude	Longitude	DLS [°/100ft]	Comments
13145.00	89.780	271.350	7116.68	5232.38	2850.13	-5204.43	3249212.96	1459961.65	40.5925315	-104.6026293	0.11	
13235.00	89.910	270.100	7116.93	5322.37	2851.27	-5294.42	3249122.97	1459961.85	40.5925346	-104.6029534	1.40	
13322.00	89.750	269.440	7117.18	5409.36	2850.92	-5381.41	3249035.98	1459960.61	40.5925336	-104.6032666	0.78	
13411.00	89.750	268.450	7117.57	5498.33	2849.28	-5470.40	3248947.02	1459958.05	40.5925291	-104.6035870	1.11	
13499.00	89.570	268.520	7118.09	5586.27	2846.95	-5558.37	3248859.08	1459954.81	40.5925226	-104.6039038	0.22	
13587.00	89.850	268.760	7118.54	5674.21	2844.86	-5646.34	3248771.14	1459951.82	40.5925168	-104.6042205	0.42	
13674.00	89.850	271.420	7118.77	5761.20	2845.00	-5733.33	3248684.15	1459951.05	40.5925172	-104.6045337	3.06	
13763.00	89.940	266.860	7118.93	5850.15	2843.67	-5822.30	3248595.21	1459948.80	40.5925134	-104.6048541	5.12	
13852.00	89.780	270.520	7119.15	5939.09	2841.63	-5911.26	3248506.27	1459945.85	40.5925078	-104.6051744	4.12	
13941.00	89.880	275.960	7119.41	6027.96	2846.66	-6000.08	3248417.41	1459949.96	40.5925215	-104.6054942	6.11	
14029.00	89.690	274.090	7119.74	6115.69	2854.37	-6087.74	3248329.68	1459956.76	40.5925426	-104.6058099	2.14	
14116.00	89.750	272.550	7120.17	6202.58	2859.41	-6174.59	3248242.78	1459960.90	40.5925564	-104.6061226	1.77	
14204.00	89.420	270.220	7120.81	6290.57	2861.53	-6262.56	3248154.80	1459962.12	40.5925622	-104.6064393	2.67	
14291.00	89.290	270.680	7121.78	6377.56	2862.22	-6349.55	3248067.81	1459961.90	40.5925640	-104.6067525	0.55	
14379.00	89.480	266.190	7122.73	6465.47	2859.81	-6437.49	3247979.90	1459958.59	40.5925573	-104.6070692	5.11	
14467.00	89.420	268.220	7123.57	6553.31	2855.52	-6525.37	3247892.07	1459953.39	40.5925455	-104.6073856	2.31	
14555.00	89.480	270.470	7124.42	6641.28	2854.52	-6613.36	3247804.10	1459951.48	40.5925427	-104.6077024	2.56	
14644.00	89.320	269.760	7125.35	6730.27	2854.70	-6702.35	3247715.11	1459950.74	40.5925431	-104.6080229	0.82	
14731.00	89.260	270.430	7126.43	6817.26	2854.84	-6789.35	3247628.12	1459949.98	40.5925434	-104.6083361	0.77	
14820.00	89.450	271.670	7127.43	6906.25	2856.47	-6878.32	3247539.14	1459950.69	40.5925478	-104.6086565	1.41	
14907.00	89.450	271.750	7128.27	6993.23	2859.07	-6965.28	3247452.16	1459952.39	40.5925549	-104.6089696	0.09	
14995.00	89.290	271.170	7129.23	7081.22	2861.31	-7053.25	3247364.18	1459953.72	40.5925610	-104.6092863	0.68	
15084.00	89.450	270.540	7130.21	7170.21	2862.64	-7142.23	3247275.19	1459954.13	40.5925645	-104.6096067	0.73	
15171.00	89.450	271.900	7131.05	7257.20	2864.49	-7229.20	3247188.20	1459955.09	40.5925696	-104.6099199	1.56	
15259.00	89.320	271.890	7131.99	7345.17	2867.40	-7317.15	3247100.23	1459957.09	40.5925775	-104.6102366	0.15	
15347.00	89.600	274.280	7132.82	7433.07	2872.13	-7405.01	3247012.33	1459960.92	40.5925904	-104.6105529	2.73	
15436.00	89.690	276.490	7133.37	7521.75	2880.49	-7493.61	3246923.65	1459968.35	40.5926133	-104.6108720	2.49	
15524.00	89.720	273.040	7133.83	7609.50	2887.79	-7581.29	3246835.90	1459974.75	40.5926332	-104.6111877	3.92	
15613.00	89.720	269.840	7134.26	7698.48	2890.03	-7670.25	3246746.92	1459976.07	40.5926393	-104.6115080	3.60	
15701.00	89.850	267.290	7134.59	7786.42	2887.83	-7758.22	3246658.99	1459972.96	40.5926332	-104.6118247	2.90	

REFERENCE WELLPATH IDENTIFICATION			
Operator	BAYSWATER E&P, LLC	Well	PICKAROON 1
Field	WELD COUNTY (NAD83/TRUE NORTH)	API	0512348023
Facility	SEC.07-T07N-R64W	Wellbore	PICKAROON 1 AWB
Slot	SLOT#01 PICKAROON 1 (1677'FSL & 302'FEL,SEC.07)		

WELLPATH DATA (201 stations) † = interpolated, ‡ = extrapolated station												
MD [ft]	Inclination [°]	Azimuth [°]	TVD [ft]	Vert Sect [ft]	North [ft]	East [ft]	Grid East [US ft]	Grid North [US ft]	Latitude	Longitude	DLS ["/100ft]	Comments
15789.00	89.750	268.870	7134.90	7874.33	2884.88	-7846.17	3246571.08	1459969.10	40.5926250	-104.6121414	1.80	
15876.00	89.820	269.980	7135.23	7961.31	2884.01	-7933.16	3246484.10	1459967.33	40.5926225	-104.6124546	1.28	
15964.00	89.850	269.890	7135.48	8049.30	2883.91	-8021.16	3246396.11	1459966.32	40.5926222	-104.6127715	0.11	
16051.00	89.880	268.330	7135.68	8136.27	2882.55	-8108.15	3246309.14	1459964.07	40.5926184	-104.6130847	1.79	
16138.00	89.880	267.920	7135.87	8223.19	2879.71	-8195.10	3246222.23	1459960.33	40.5926105	-104.6133978	0.47	
16226.00	89.850	268.500	7136.07	8311.12	2876.96	-8283.05	3246134.31	1459956.67	40.5926029	-104.6137145	0.66	
16314.00	89.880	268.720	7136.28	8399.07	2874.82	-8371.03	3246046.36	1459953.63	40.5925969	-104.6140312	0.25	
16402.00	89.780	269.080	7136.54	8487.03	2873.14	-8459.01	3245958.40	1459951.03	40.5925922	-104.6143480	0.42	
16489.00	89.750	269.910	7136.90	8574.01	2872.37	-8546.01	3245871.42	1459949.36	40.5925900	-104.6146613	0.95	
16577.00	89.910	270.890	7137.16	8662.01	2872.98	-8634.00	3245783.43	1459949.07	40.5925916	-104.6149781	1.13	
16664.00	89.690	273.920	7137.46	8748.96	2876.63	-8720.92	3245696.48	1459951.82	40.5926016	-104.6152910	3.49	
16751.00	89.720	270.530	7137.91	8835.91	2880.01	-8807.84	3245609.54	1459954.30	40.5926108	-104.6156040	3.90	
16839.00	89.910	265.800	7138.20	8923.80	2877.19	-8895.77	3245521.64	1459950.57	40.5926029	-104.6159206	5.38	
16928.00	89.850	265.940	7138.38	9012.50	2870.78	-8984.53	3245432.95	1459943.25	40.5925853	-104.6162402	0.17	
17016.00	89.850	268.200	7138.61	9100.33	2866.29	-9072.41	3245345.12	1459937.84	40.5925728	-104.6165567	2.57	
17104.00	89.940	272.560	7138.77	9188.31	2866.87	-9160.39	3245257.15	1459937.52	40.5925743	-104.6168734	4.96	
17192.00	90.000	272.650	7138.82	9276.26	2870.87	-9248.30	3245169.20	1459940.61	40.5925852	-104.6171900	0.12	
17281.00	90.000	272.730	7138.82	9365.20	2875.05	-9337.20	3245080.27	1459943.87	40.5925966	-104.6175101	0.09	
17368.00	90.060	273.020	7138.77	9452.12	2879.41	-9424.09	3244993.34	1459947.33	40.5926085	-104.6178229	0.34	
17456.00	89.970	272.730	7138.75	9540.05	2883.82	-9511.98	3244905.41	1459950.84	40.5926205	-104.6181394	0.35	LAST BH MWD SURVEY
17495.00‡	89.970	272.730	7138.77	9579.03	2885.68	-9550.94	3244866.44	1459952.29	40.5926256	-104.6182797	0.00	PROJECTION TO BIT

REFERENCE WELLPATH IDENTIFICATION			
Operator	BAYSWATER E&P, LLC	Well	PICKAROON 1
Field	WELD COUNTY (NAD83/TRUE NORTH)	API	0512348023
Facility	SEC.07-T07N-R64W	Wellbore	PICKAROON 1 AWB
Slot	SLOT#01 PICKAROON 1 (1677'FSL & 302'FEL,SEC.07)		

TARGETS								
Name	TVD [ft]	North [ft]	East [ft]	Grid East [US ft]	Grid North [US ft]	Latitude	Longitude	Shape
PICKAROON PAD 1-6 (SB 460')	5.00	0.00	0.00	3254446.41	1457165.51	40.5847100	-104.5838900	polygon
	2D Polygon: dimensions not calculated							
SEC.07-T07N-R64W	5.00	0.00	0.00	3254446.41	1457165.51	40.5847100	-104.5838900	polygon
	2D Polygon: dimensions not calculated							
SEC.12-T07N-R65W	5.00	0.00	0.00	3254446.41	1457165.51	40.5847100	-104.5838900	polygon
	2D Polygon: dimensions not calculated							
PICKAROON 1 LP REV-1(820'FNL & 470'FEL,SEC.07)	7104.00	2798.01	-163.86	3254253.66	1459961.60	40.5923900	-104.5844800	point
PICKAROON 1 BHL REV-1(820'FNL & 470'FWL,SEC.12)	7139.00	2890.94	-9556.58	3244860.74	1459957.50	40.5926400	-104.6183000	point

WELLPATH COMPOSITION - Ref Wellbore: PICKAROON 1 AWB Ref Wellpath: PICKAROON 1 AWP					
Start MD [ft]	End MD [ft]	Positional Uncertainty Model	Log Name/Comment	Wellbore	Survey Date
16.00	1495.00	OWSG MWD rev2 + IFR1 + Multi-Station Correction	OWSG MWD rev2 + IFR1 + MS 13-1/2" <208 - 1495>	PICKAROON 1 AWB	7/11/2022
1495.00	17495.00	OWSG MWD rev2 + IFR1 + Multi-Station Correction	OWSG MWD rev2 + IFR1 + MS 8-1/2" <1612 - 17456>	PICKAROON 1 AWB	7/16/2022

REFERENCE WELLPATH IDENTIFICATION			
Operator	BAYSWATER E&P, LLC	Well	PICKAROON 1
Field	WELD COUNTY (NAD83/TRUE NORTH)	API	0512348023
Facility	SEC.07-T07N-R64W	Wellbore	PICKAROON 1 AWB
Slot	SLOT#01 PICKAROON 1 (1677'FSL & 302'FEL,SEC.07)		

WELLPATH COMMENTS				
MD [ft]	Inclination [°]	Azimuth [°]	TVD [ft]	Comment
208.00	0.610	171.440	208.00	FIRST BH SURFACE MWD SURVEY
1495.00	4.390	10.940	1492.80	LAST BH SURFACE MWD SURVEY
1612.00	4.950	16.190	1609.41	FIRST BH MWD SURVEY
8093.00	86.291	274.681	7099.36	CROSS SETBACK HEEL (829'FNL & 460'FEL,SEC.07)
17456.00	89.970	272.730	7138.75	LAST BH MWD SURVEY
17495.00	89.970	272.730	7138.77	PROJECTION TO BIT