



**SECTOR CEMENT BOND  
GAMMA RAY  
CCL LOG**

Comp. OCCIDENTAL PETROLEUM CORP.  
Well UPRC P #04-33D  
Field WATTENBERG  
Co. WELD  
State COLORADO

Company **OCCIDENTAL PETROLEUM CORP.**  
Well **UPRC P #04-33D**  
Field **WATTENBERG**  
County **WELD** State **COLORADO**

Location: API #: 05-123-31482 Other Services  
2511' FSL & 2206' FEL  
SEC 5 TWP 3N RGE 67W N/A  
Permanent Datum GL Elevation 4875'  
Log Measured From GL 0' Above Perm. Datum  
Drilling Measured From KB G.L. 4875'

Date of Service	08-SEP-2022					
Run Number	ONE					
Depth Driller or PBTD	N/A					
Depth Logger	4020'					
Bottom Log Interval	4000'					
Top Log Interval	SURFACE					
Open Hole Size	N/A					
Type Fluid	H2O					
Fluid Level	SURFACE					
Fluid Density	N/A					
Max. Recorded Temperature	N/A					
Wellhead Connection	7-1/16" 5K					
Estimated Cement Top	N/A					
Unit Number	1007					
Wireline Size	9/32"					
Location	BRIGHTON					
Recorded By	J. KOTT					
Witnessed By	MR. FIDEL GONZALES					
Surface Casing	8-5/8"	Size	24#	W/Ft	Top	Bottom
Production Casing	4-1/2"		11.6#		SURFACE	614'
Liner Casing					SURFACE	8277'
Tubing Record						

<<< Fold Here >>>

All interpretations are opinions based on inferences from electrical or other measurements and Ranger Energy Services cannot and does not guarantee the accuracy or correctness of any interpretation, and Ranger Energy Services will not be liable or responsible for any loss, costs, damages, or expenses incurred or sustained by anyone resulting from any interpretation made by any of our officers, agents or employees.


**Comments**

N/A DENOTES NOT AVAILABLE OR NON-APPLICABLE.  
LOG CORRELATED TO KB PER REQUEST

THANK YOU FOR USING RANGER ENERGY SERVICES! FIELD TICKET #

Your Ranger Energy Services Crew	Tool Data - Services	Serial Number
Engineer: J. KOTT Operator: B. HECHT Operator: B. TOOLEY Operator:		

Company	Offset (ft)	Substrate	Description	Length (ft)	O.D. (in)	Weight (lb)
---------	-------------	-----------	-------------	-------------	-----------	-------------

Sensor	Offset (ft)	Schematic	Description	Length (ft)	O.D. (in)	Weight (lb)	
			Cable_Head-1_7/16 Titan 1 7/16" Cable Head	1.02	1.44	3.31	
WVFSYNC	16.00						
WVFCAL	16.00						
TEMP	14.87						
WVFS8	13.58			SCBLTEKSECT-275 Temp JS (234RIBT-2096) TekCo 2 3/4" 400 Deg. F Sector Tool with Temperature (JS)	9.13	2.75	130.00
WVFS7	13.58						
WVFS6	13.58						
WVFS5	13.58						
WVFS4	13.58						
WVFS3	13.58						
WVFS2	13.58						
WVFS1	13.58						
WVF3FT	12.83						
WVF5FT	11.83						
WVFTEMP	8.50						
CCL	7.35		CCL-275tekco (111) Tekco 2 3/4" 450 Deg. F Rare Earth Magnets	1.83	2.75	33.00	
GR	4.04		GR-Tek-Co 2 3/4 (234GR4-267) Tekco 2 3/4" 400 Deg. F Logging Gamma Ray	3.67	2.75	40.00	
			Centralizers-8071-275-200 Tekco 2 3/4" Adjustable Centralizer	2.73	2.75	25.00	
			Bull_Plug-1_7/16_GO Titan 1 7/16" Female Bull Plug	0.27	1.44	1.00	

Dataset: 468195\_oxy\_uprc p #04-33d\_0512331482\_20220908\_scbl-gr-ccl.db: field/well/run1/pass5.3  
 Total length: 18.64 ft  
 Total weight: 232.31 lb  
 O.D.: 2.75 in

# Log Variables

DatabaseC:\ProgramData\Warrior\Data\468195\_oxy\_uprc p #04-33d\_0512331482\_20220908\_scbl- Dataset field/well/run1/pass5.3/\_vars\_

## Top - Bottom

BHTEMP_Src TEMP	BOREID in 8.75	BOTTEMP degF 100	CASEOD in 4.5	CASETHCK in 0.408	CASEWGHT lb/ft 11.6	MAXAMPL mV 81.2	MINAMPL mV 0.7
MINATTN db/ft 0.8	PERFS No	PPT usec 0	SRFTEMP degF 0	TDEPTH ft 0			

## Variable Description

BHTEMP\_Src : BHTEMP Input Source Selector  
 BOREID : Borehole I.D.  
 BOTTEMP : Bottom Hole Temperature  
 CASEOD : Casing O.D.  
 CASETHCK : Casing Thickness  
 CASEWGHT : Casing Weight  
 MAXAMPL : Maximum Amplitude

MINAMPL : Minimum Amplitude  
 MINATTN : Minimum Attenuation  
 PERFS : Perforation Flag  
 PPT : Predicted Pipe Time  
 SRFTEMP : Surface Temperature  
 TDEPTH : Total Depth

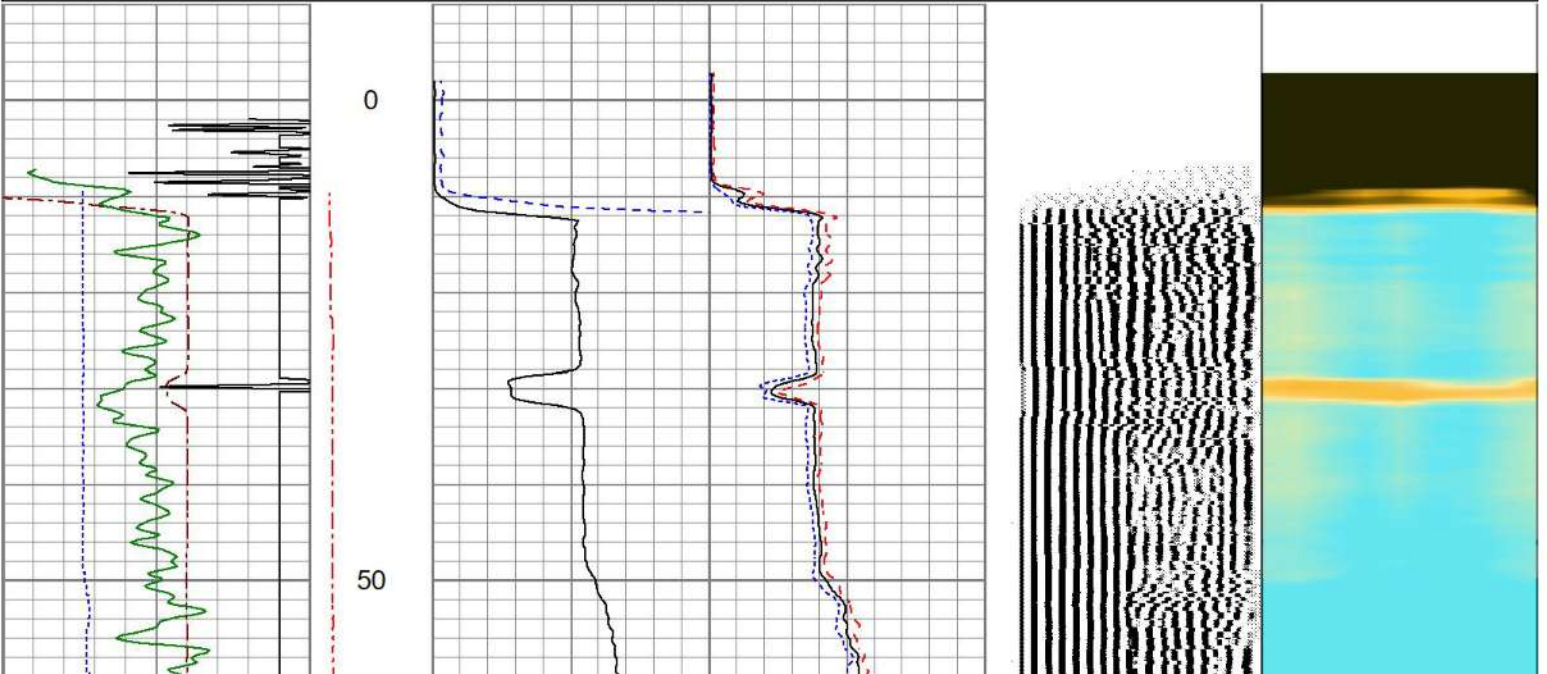


## MAIN PASS

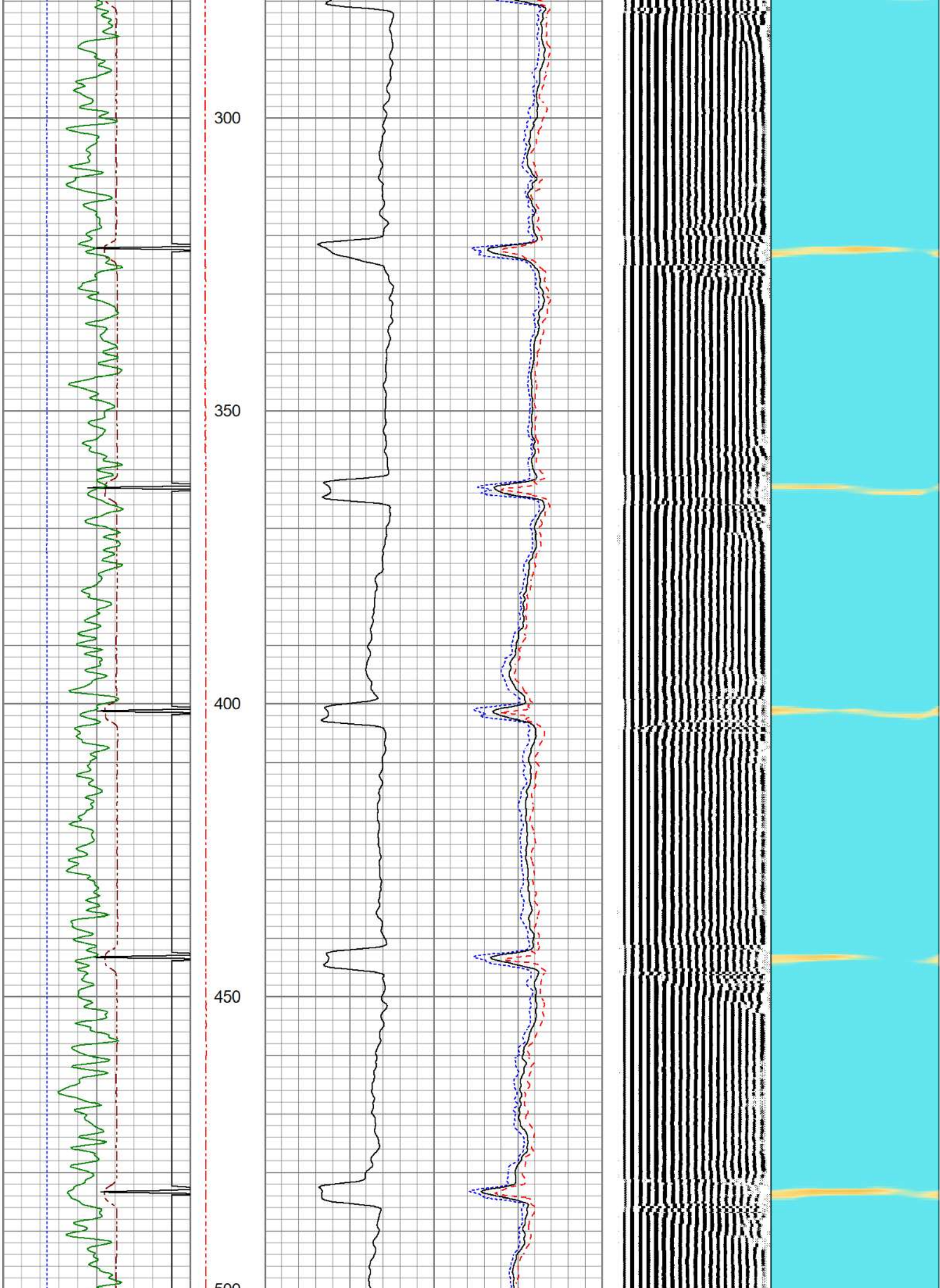
0 PSI APPLIED AT SURFACE

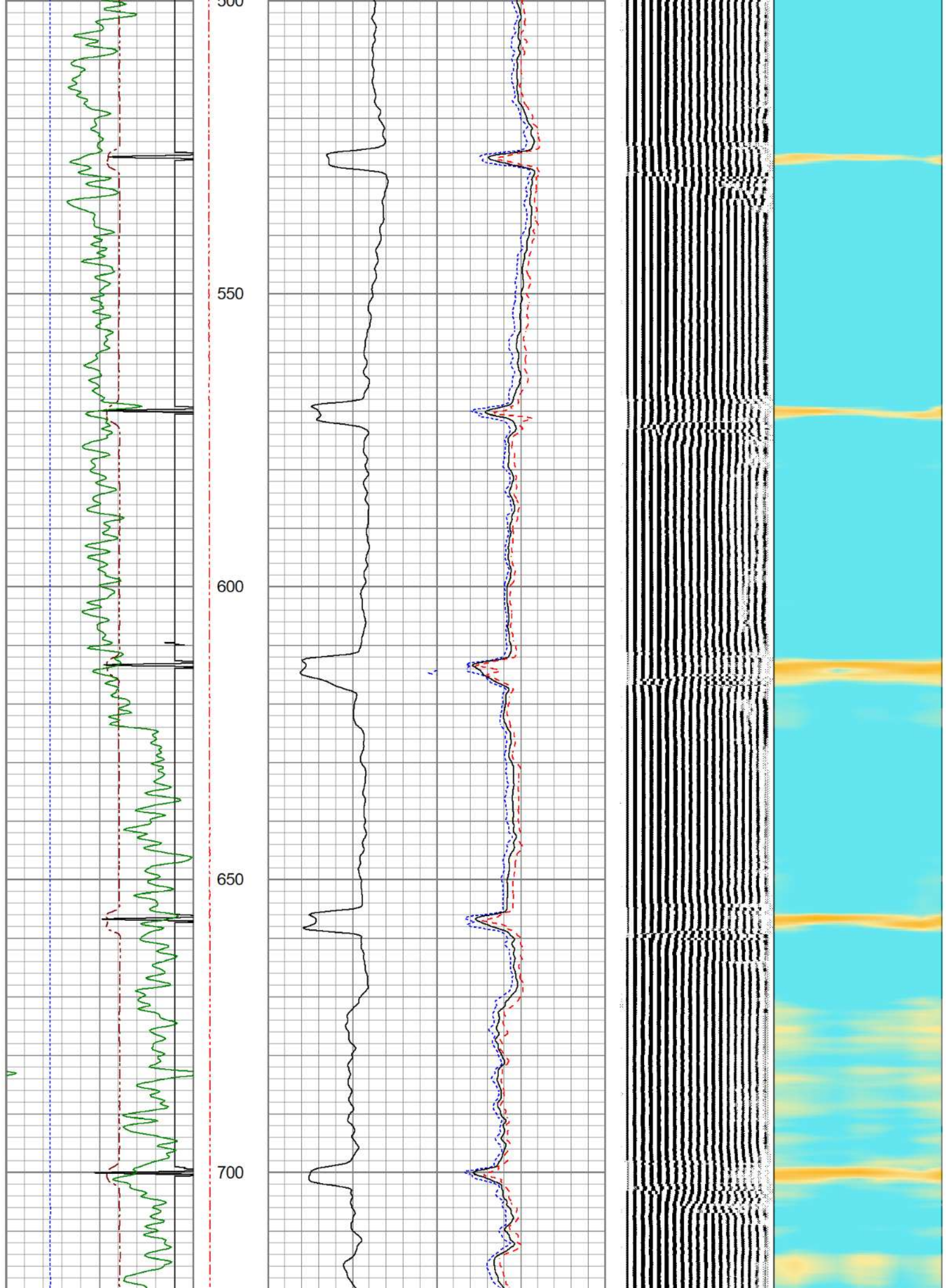
Database File 468195\_oxy\_uprc p #04-33d\_0512331482\_20220908\_scbl-gr-ccl.db  
 Dataset Pathname pass5.3  
 Presentation Format res\_scbl 8sec-gr-ccl  
 Dataset Creation Thu Sep 08 16:02:38 2022  
 Charted by Depth in Feet scaled 1:240

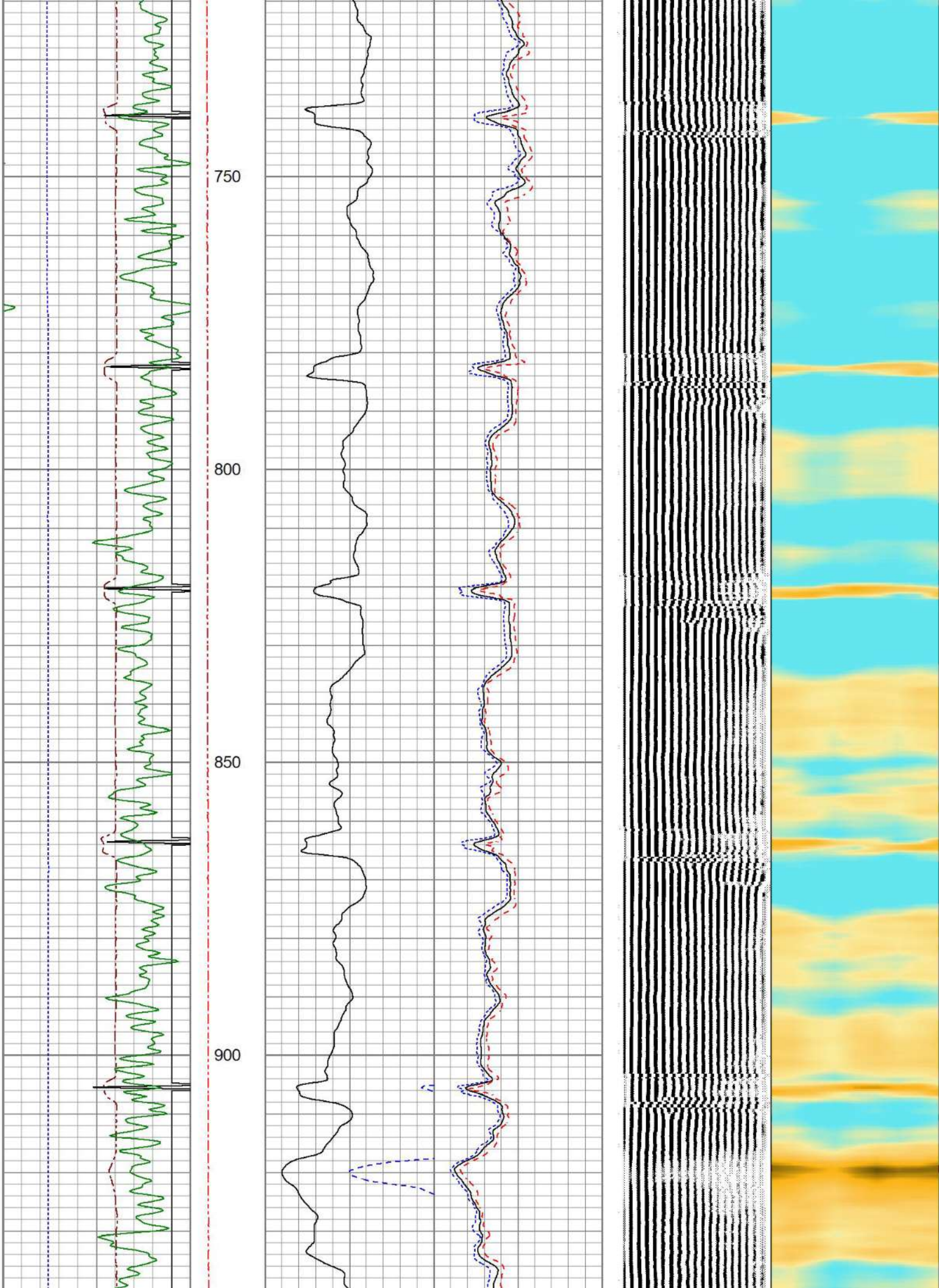
270 3FT TT (usec) 170	LTEN	3' Amplitude	0 Sector Min Amp150	200 VDL (usec) 1200	1 Sector Map	8
-9 CCL 1	(lb)	(mV) 100	Sector Avg Amp			
0 GR 150	0 2000	3' Amplified	0 150			
-150 LSPD (ft/min) 150		Amplitude X 5	Sector Max Amp			
		(mV) 20	0 150			

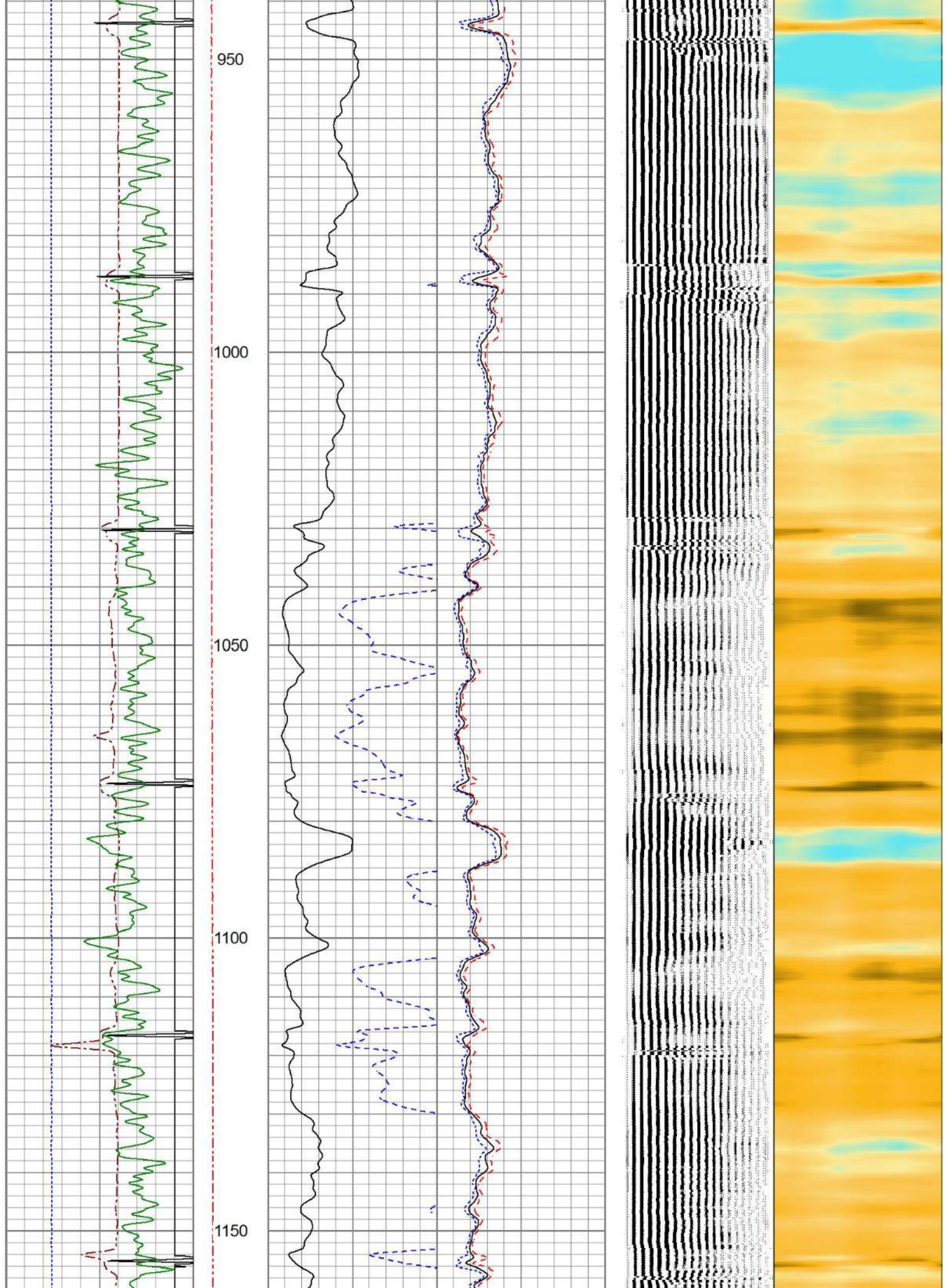


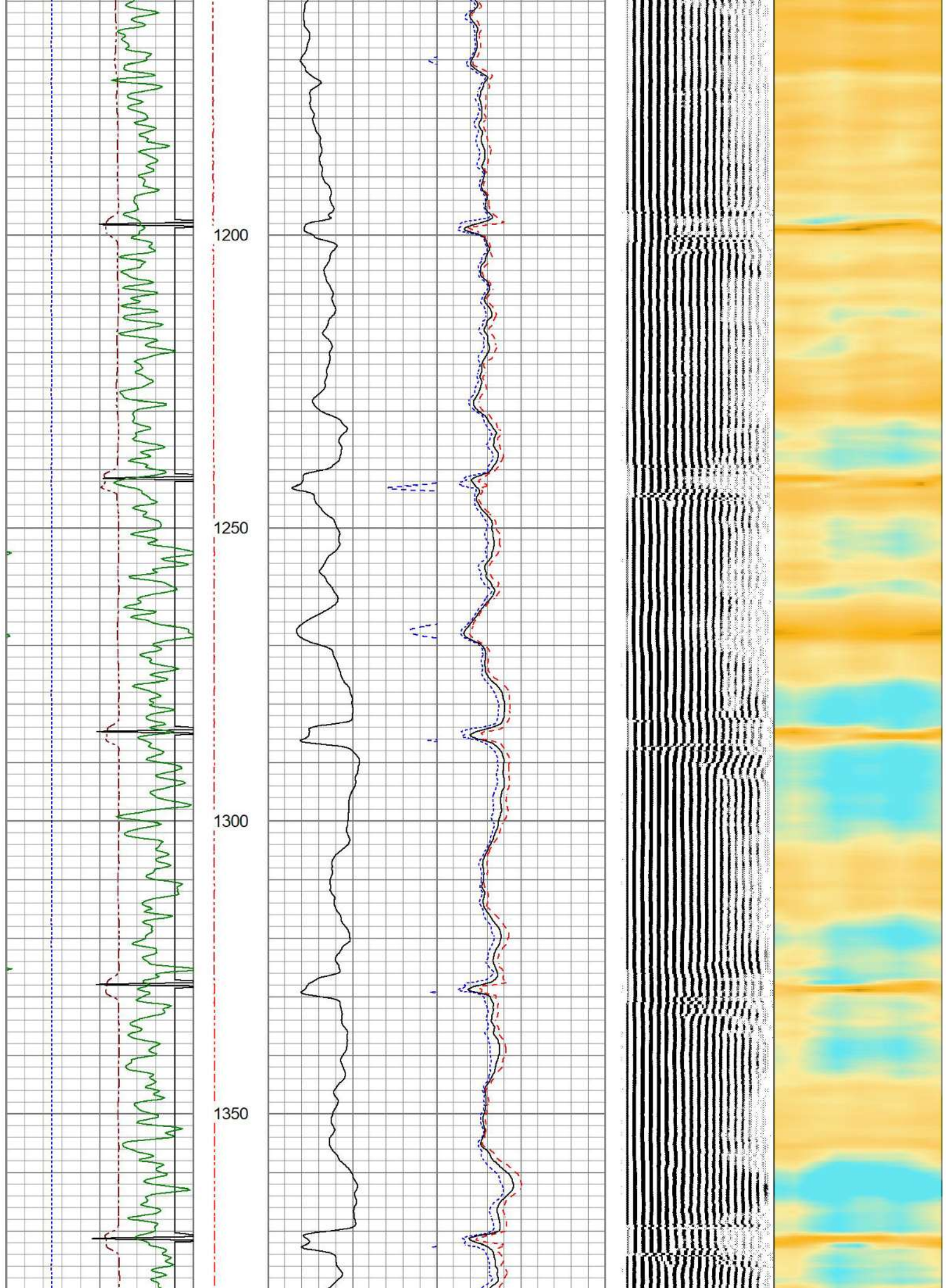


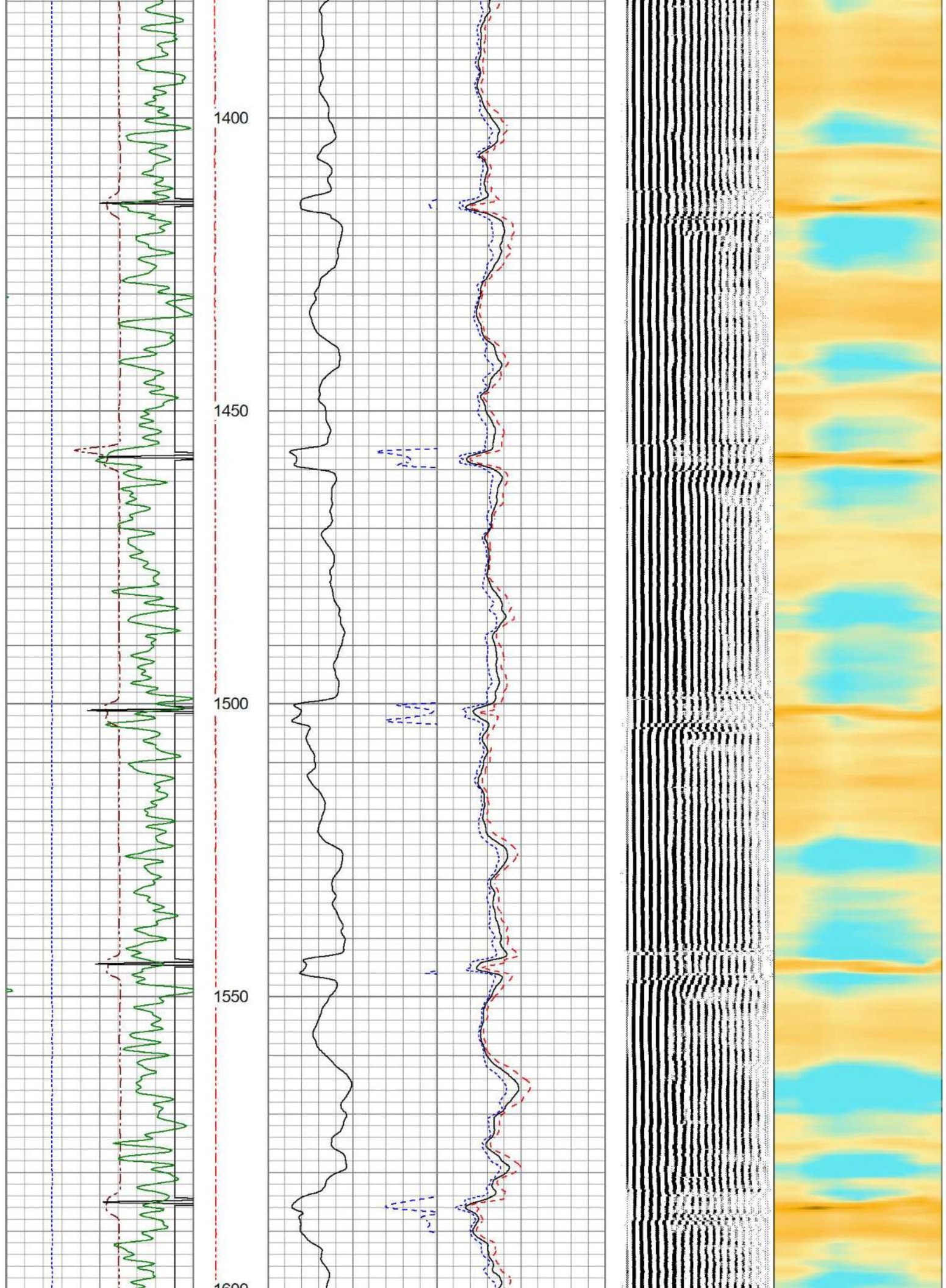


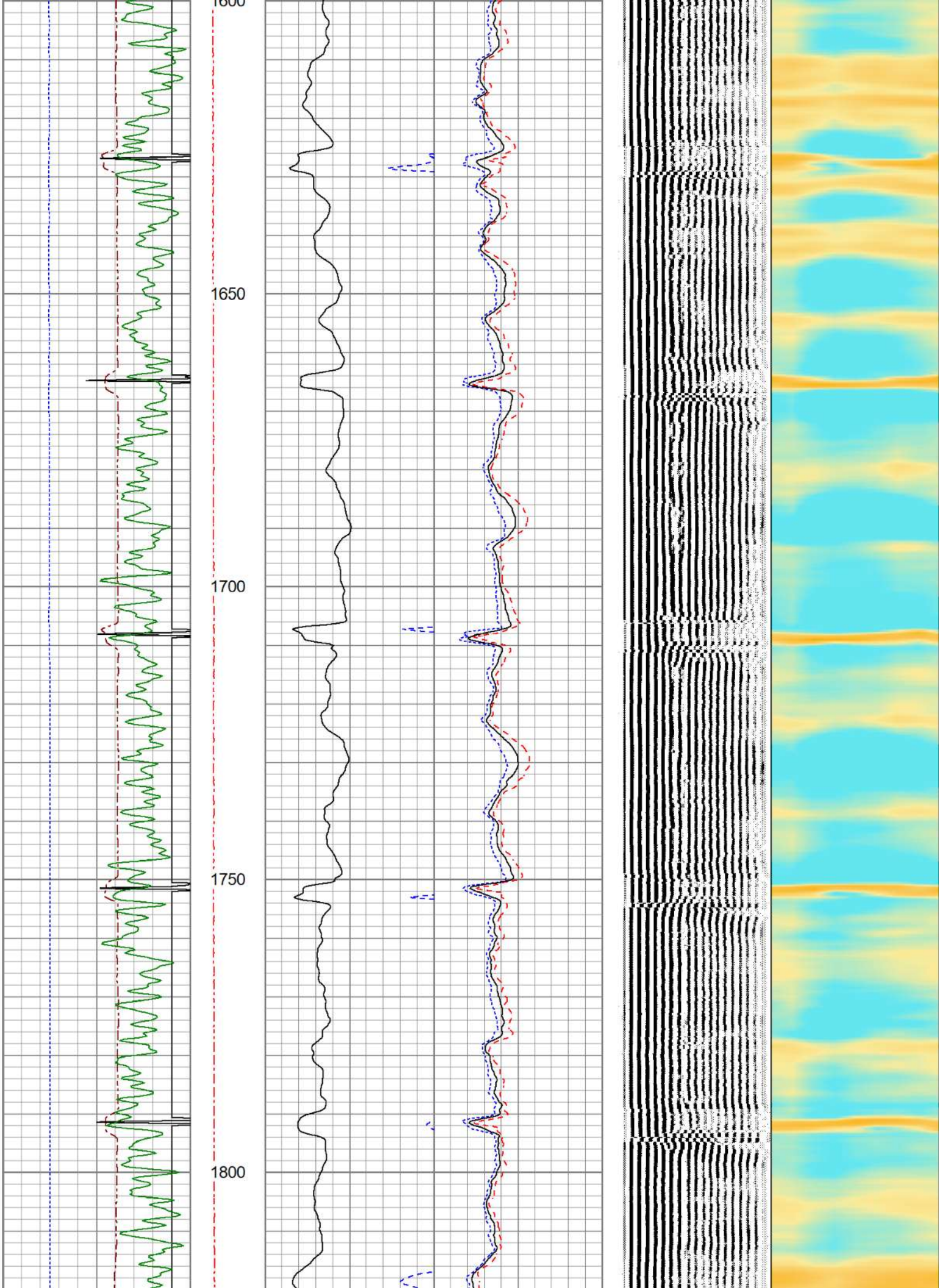


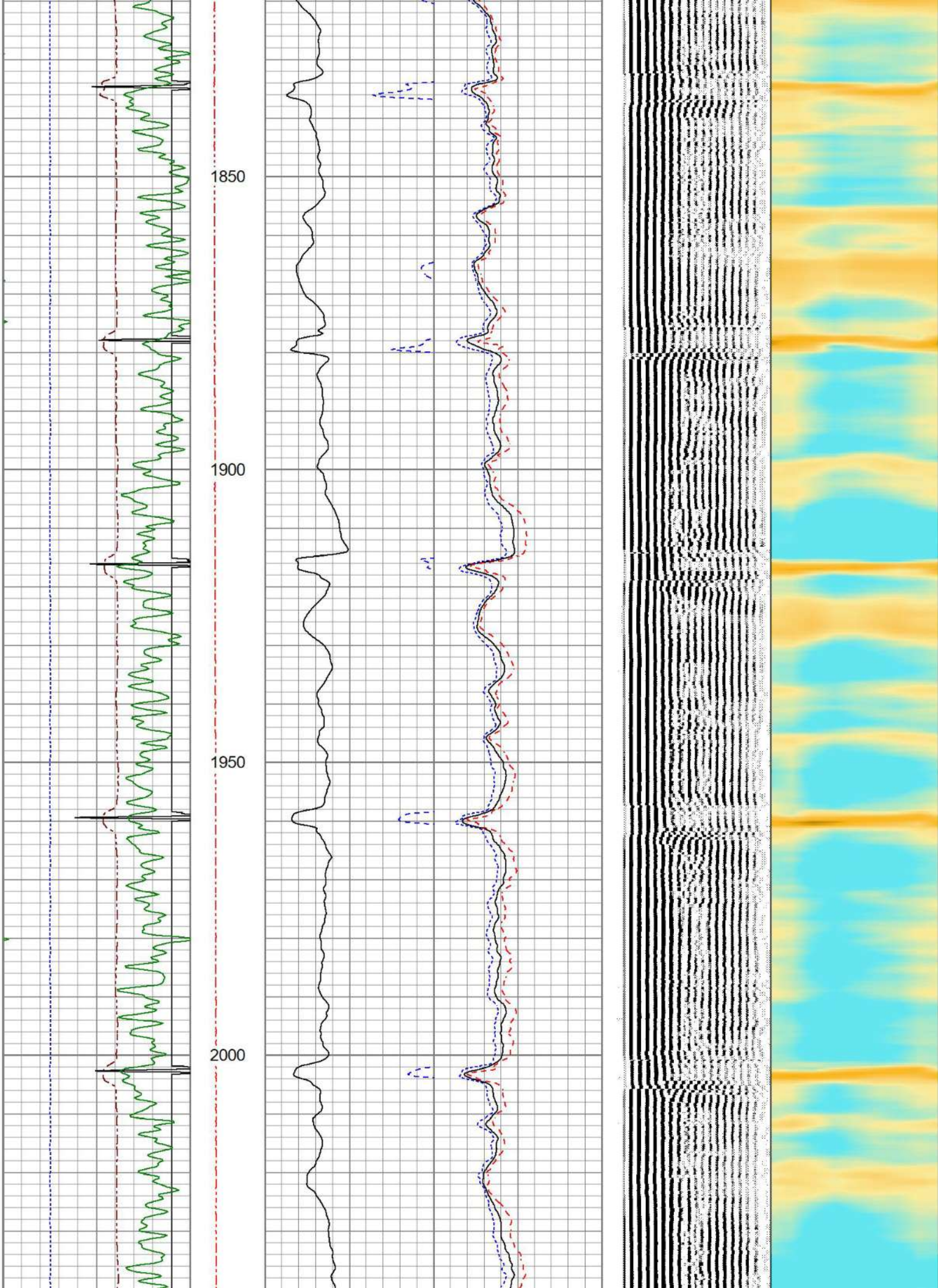


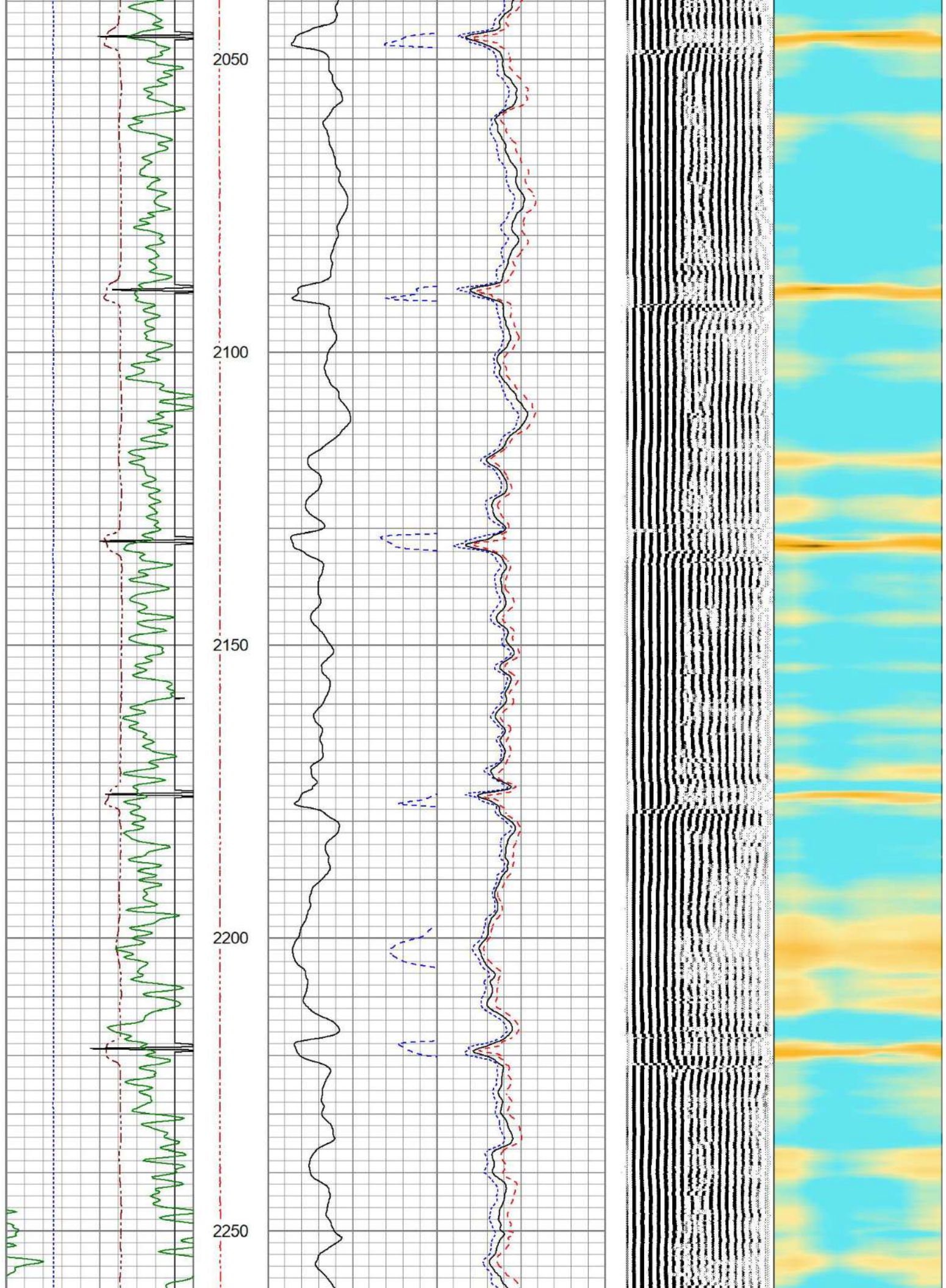




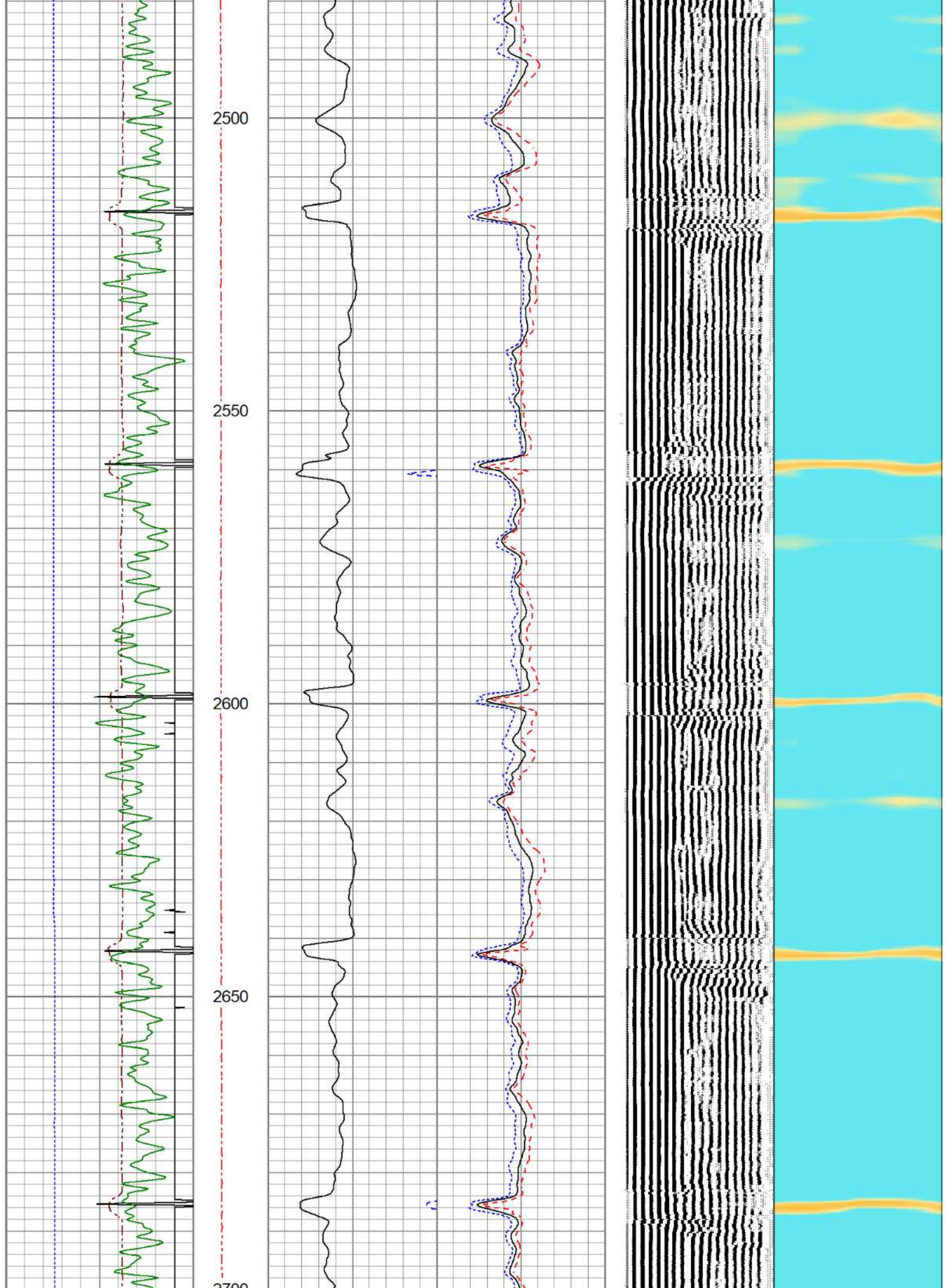


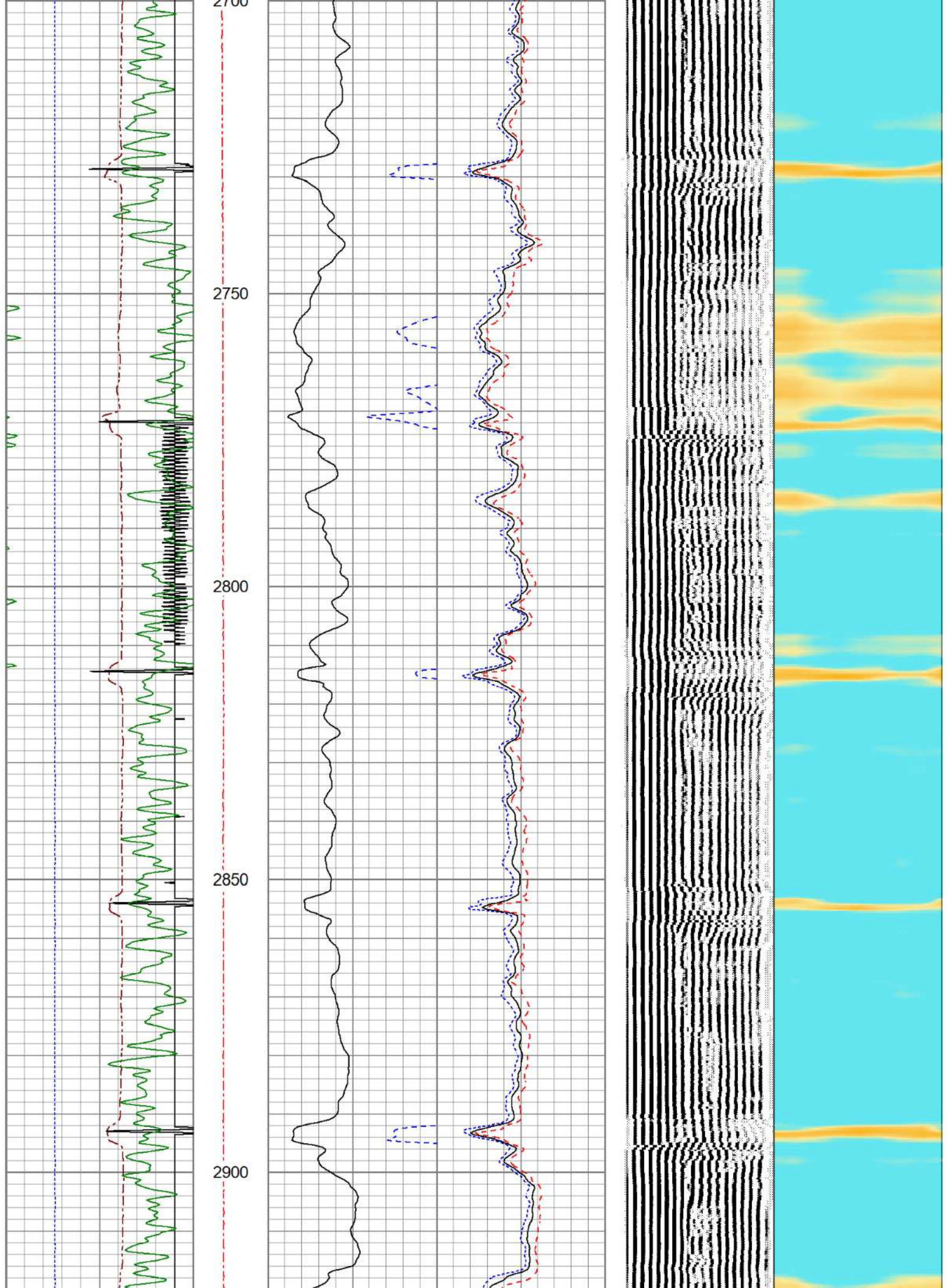


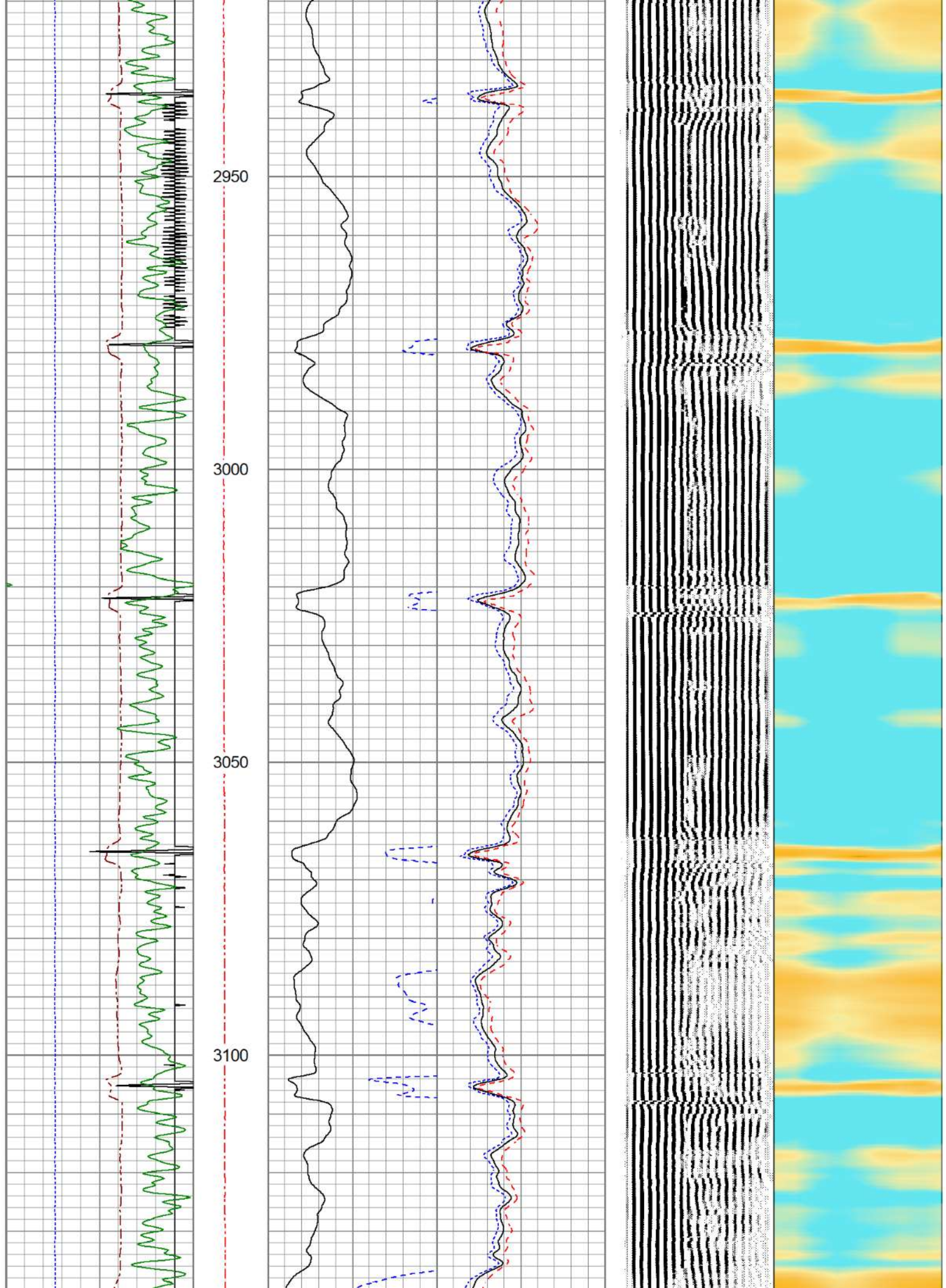


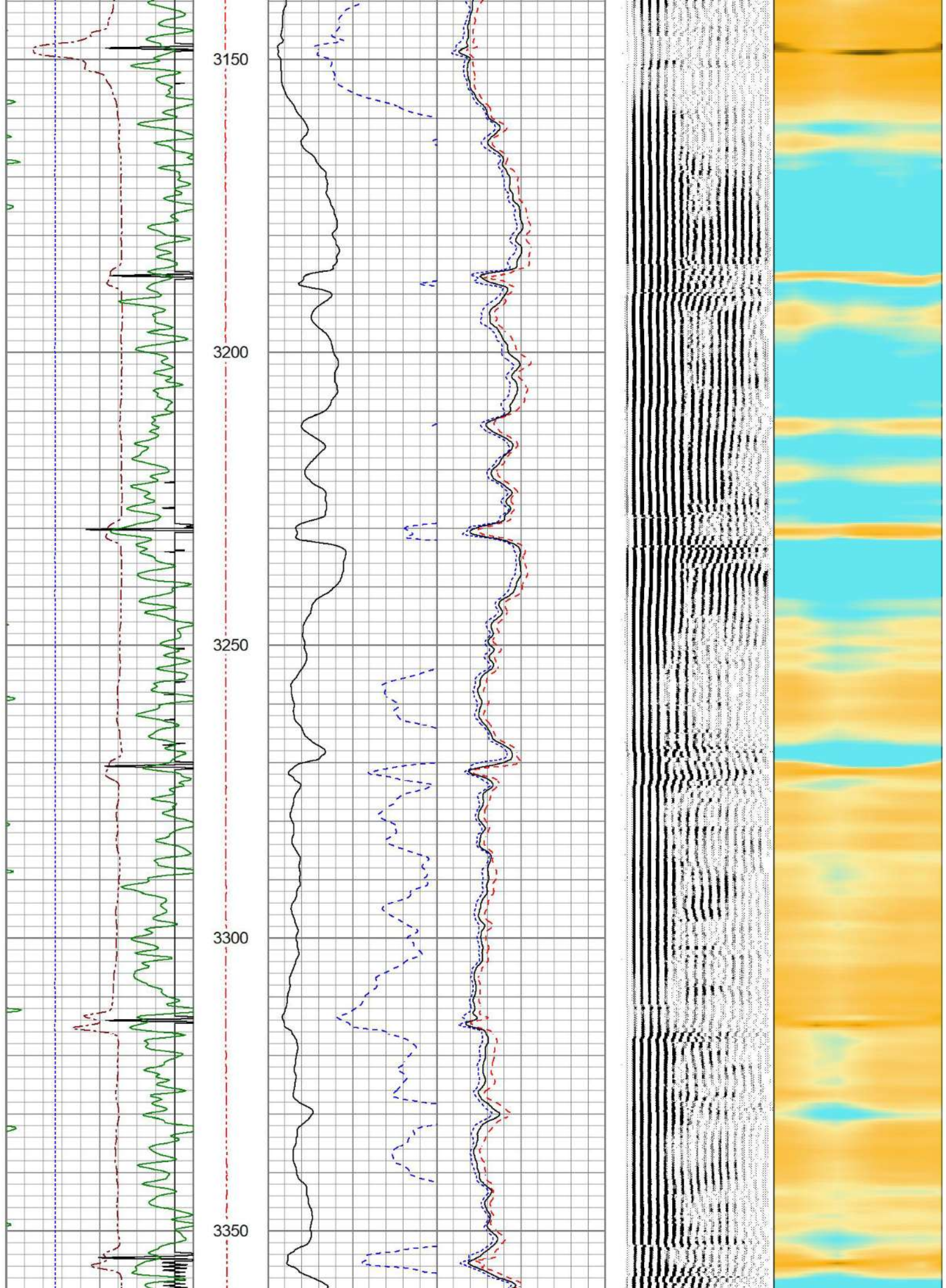


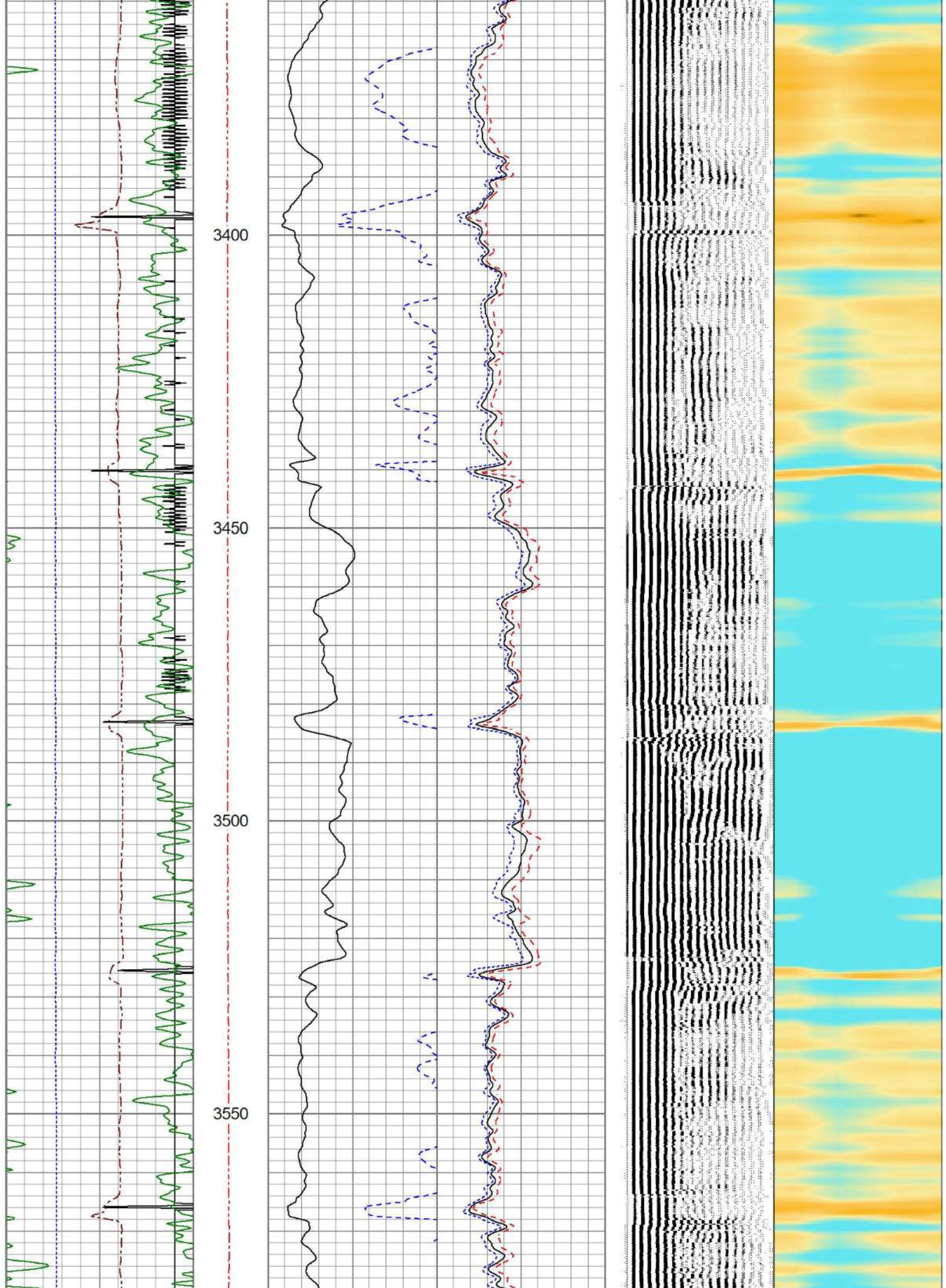
















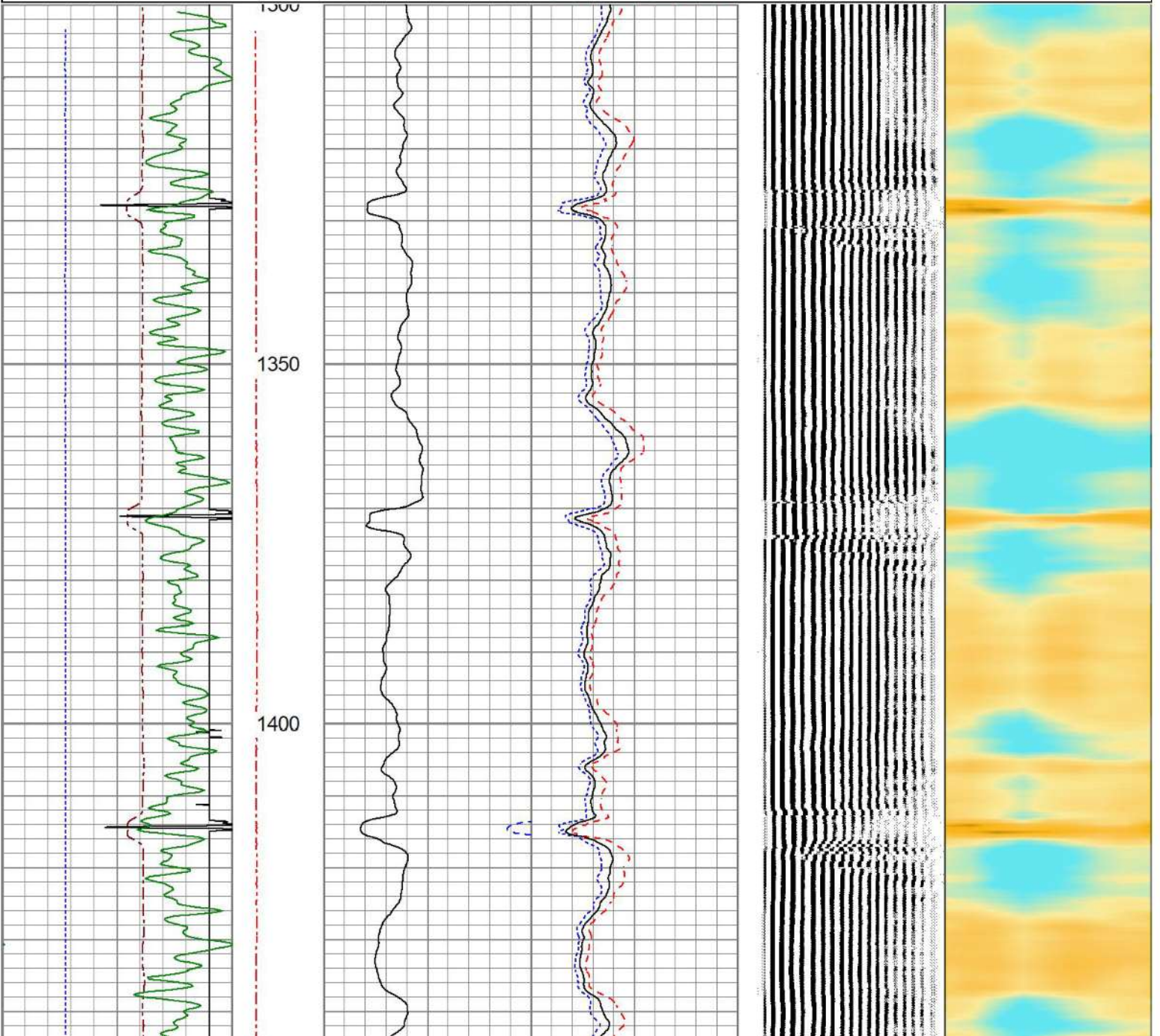


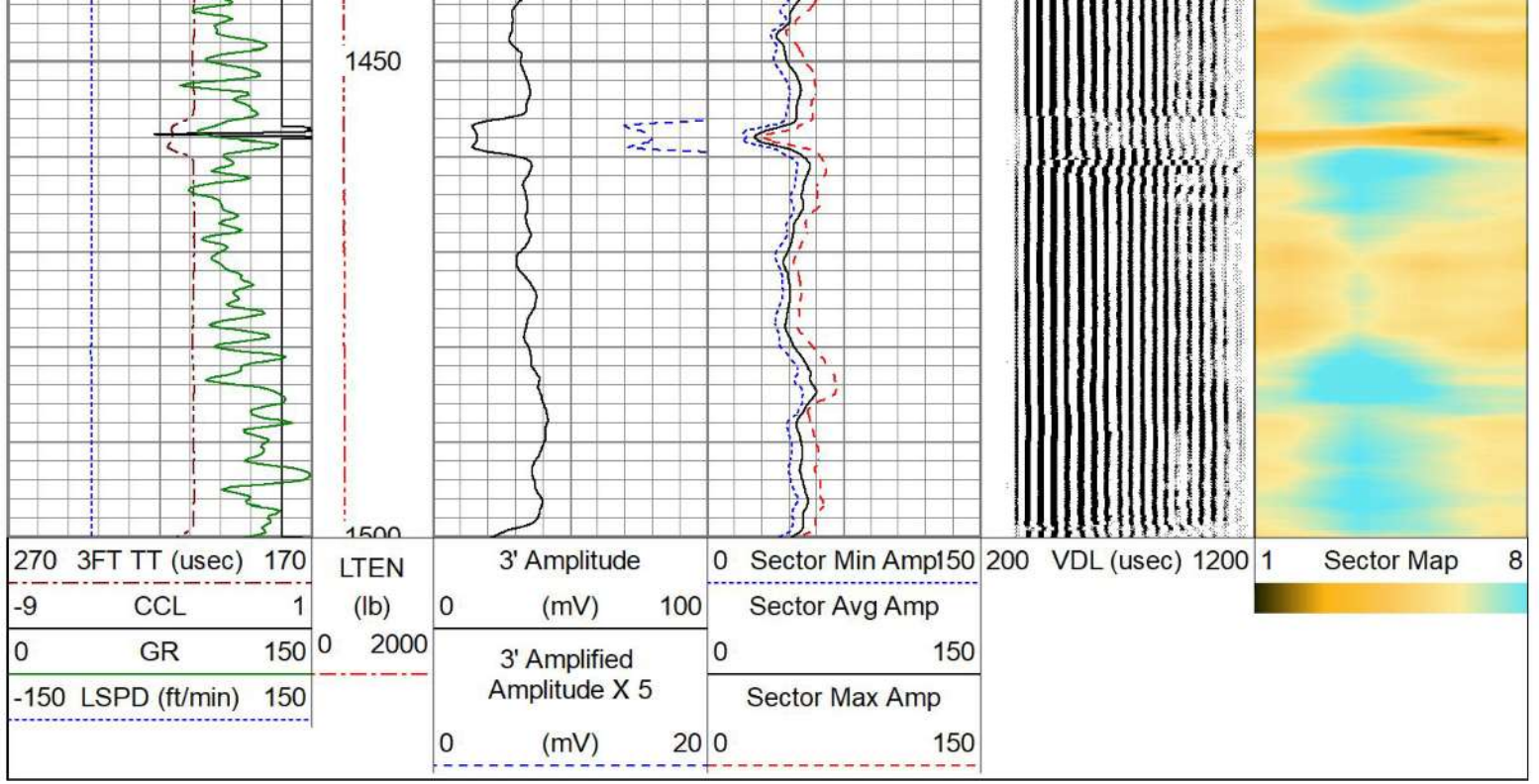
# REPEAT PASS

0 PSI APPLIED AT SURFACE

Database File 468195\_oxy\_uprc p #04-33d\_0512331482\_20220908\_scbl-gr-ccl.db  
 Dataset Pathname pass3.1  
 Presentation Format res\_scbl 8sec-gr-ccl  
 Dataset Creation Thu Sep 08 16:05:53 2022  
 Charted by Depth in Feet scaled 1:240

270	3FT TT (usec)	170	LTEN	3' Amplitude	0	Sector Min Amp	150	200	VDL (usec)	1200	1	Sector Map	8
-9	CCL	1	(lb)	(mV)	100	Sector Avg Amp							
0	GR	150	0 2000	3' Amplified Amplitude X 5		0	150						
-150	LSPD (ft/min)	150		(mV)	20 0	Sector Max Amp							





**Calibration Report**

Database File 468195\_oxy\_uprc p #04-33d\_0512331482\_20220908\_scbl-gr-ccl.db  
 Dataset Pathname pass5.3  
 Dataset Creation Thu Sep 08 16:02:38 2022

**Gamma Ray Calibration Report**

Serial Number: 234GR4-267  
 Tool Model: Tek-Co 2 3/4  
 Performed: (Not Performed)

Calibrator Value: 1.0

Background Reading: 0.0 cps  
 Calibrator Reading: 1.0 cps

Sensitivity: 1.0000 /cps

**Segmented Cement Bond Log Calibration Report**

Serial Number: 234RIBT-2096  
 Tool Model: 275 Temp JS

Calibration Casing Diameter: 4.500 in  
 Calibration Depth: 538.175 ft

Master Calibration, performed Thu Sep 8 14:38:34 2022:

	Raw (v)		Calibrated (mv)		Results	
	Zero	Cal	Zero	Cal	Gain	Offset
3'	0.000	1.700	0.000	81.196	47.762	0.000
CAL	0.000	0.864				
5'	0.000	2.110	0.000	81.196	38.482	0.000
SUM						
S1	0.000	1.940	0.000	100.000	51.546	0.000
S2	0.000	2.010	0.000	100.000	49.751	0.000
S3	0.000	1.825	0.000	100.000	54.795	0.000
S4	0.000	1.728	0.000	100.000	57.854	0.000

S5	0.000	1.698	0.000	100.000	58.893	0.000
S6	0.000	1.740	0.000	100.000	57.488	0.000
S7	0.000	1.746	0.000	100.000	57.287	0.000
S8	0.000	1.606	0.000	100.000	62.251	0.000

Internal Reference Calibration, performed (Not Performed):

	Raw (v)		Calibrated (v)		Results	
	Zero	Cal	Zero	Cal	Gain	Offset
CAL	0.000	0.000	0.000	0.864	1.000	0.000

Air Zero Calibration, performed Mon May 9 07:31:51 2022:

	Raw (v)		Calibrated (v)		Results	
	Zero		Zero		Offset	
3'	0.000		0.000		0.000	
5'	0.000		0.000		0.000	
SUM						
S1	0.000		0.000		0.000	
S2	0.000		0.000		0.000	
S3	0.000		0.000		0.000	
S4	0.000		0.000		0.000	
S5	0.000		0.000		0.000	
S6	0.000		0.000		0.000	
S7	0.000		0.000		0.000	
S8	0.000		0.000		0.000	

Temperature Calibration Report

Serial Number: 234RIBT-2096  
Tool Model: 275 Temp JS  
Performed: (Not Performed)

	Reference	Reading
Low Reference:	0.00 degF	0.00 usec
High Reference:	1.00 degF	1.00 usec

Gain: 1.00  
Offset: 0.00  
Delta Spacing 1



Company **OCCIDENTAL PETROLEUM CORP.**  
Well **UPRC P #04-33D**  
Field **WATTENBERG**  
County **WELD**  
State **COLORADO**