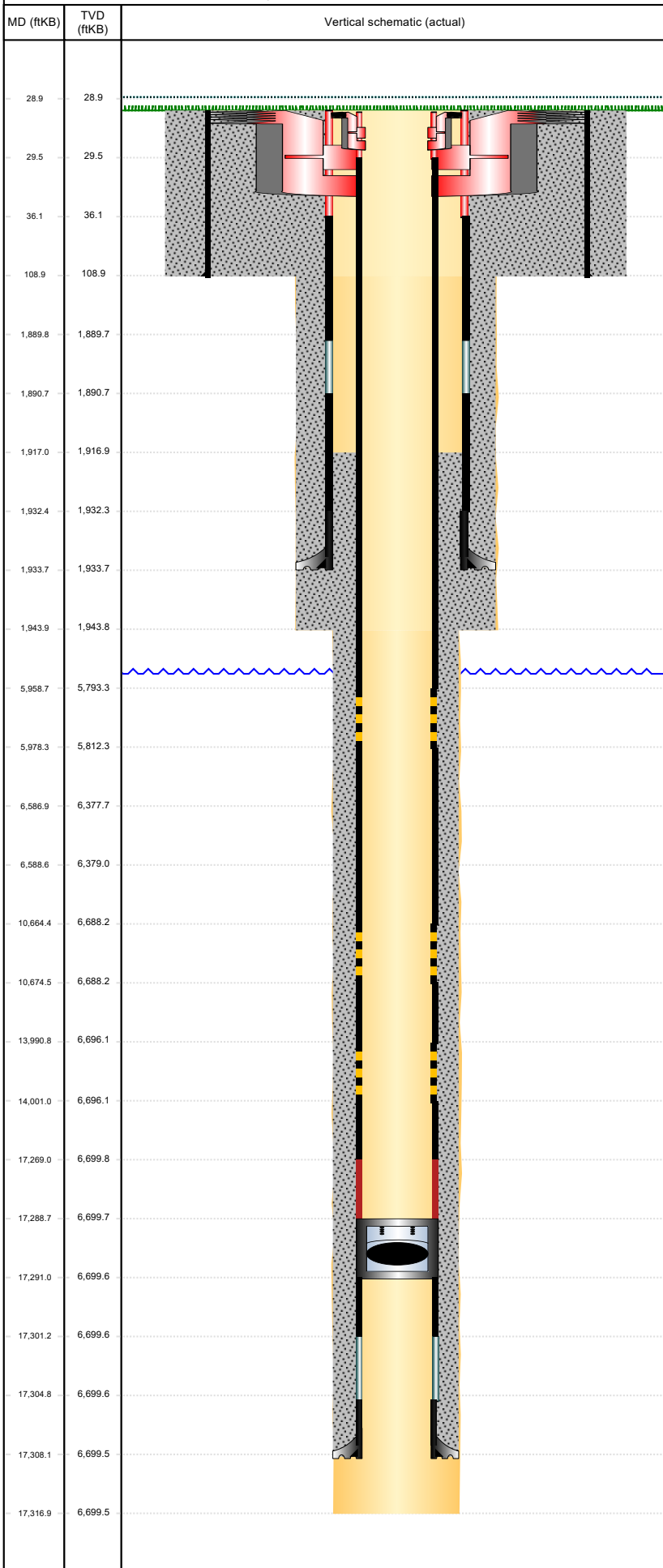


Land, Original Hole, 10/17/2022 11:36:21 AM



Well Header			
Surface UWI 0512349275	Business Unit Rockies	Gov Auth Dist	Prod Tree Loc Land
Original RKB Elevation (ft) 4,817.00	Original KB to Ground (ft) 29.00	Original Spud Date 9/9/2022	Abandon Date
Comment THERE IS AN EXCEPTION TO THE COGCC LOGGING REQUIREMENTS RULE 317.p. A cased-hole neutron log with gamma-ray log will be run from the kick-off point into the surface casing. See Sundry Doc. #402772880 dated 8/11/2021 for COA details.			
Directions To Well CR 40 & 57, S 1, E INTO BOOTH PROPERTY GATE, FOLLOW RD 2 MI EAST, N 1, E 0.5, S INTO			
Congressional Location			
Quarter 3 NW	Quarter 4 NE	Section 31	Township 4
Township N/S Dir N	Range 63	Range E/W Dir W	
Bottom Hole Legal Location			
Bottom Hole Legal Location 6 45/NWNE-31-004N-063W6PM			
Plug Back Total Depths			
Date	PBTD (ftKB)	Method	Com
Wellbore Sections			
Section Des	Hole Size (in)	Act Top (ftKB)	Act Btm (ftKB)
CONDUCTOR	26	29.0	109.0
SURFACE	13 1/2	109.0	1,944.0
PRODUCTION	8 1/2	1,944.0	17,317.0
Zone Statuses			
Zone Name	Status Date	Status	Fluid Type
Casing Strings			
Conductor, Planned?-N, 109ftKB			
Casing Description Conductor	Run Date 7/14/2022	OD (in) 26	Wt/Len (lb/ft) 125.00
		Grade X-56	Top Depth (ftKB) 29
			Set Depth (ftKB) 109
Surface, Planned?-N, 1933.7ftKB			
Casing Description Surface	Run Date 9/10/2022	OD (in) 9 5/8	Wt/Len (lb/ft) 36.00
		Grade J-55	Top Depth (ftKB) 29
			Set Depth (ftKB) 1933.7
Production Casing, Planned?-N, 17308.2ftKB			
Casing Description Production Casing	Run Date 10/1/2022	OD (in) 5 1/2	Wt/Len (lb/ft) 17.00
		Grade P-110	Top Depth (ftKB) 29
			Set Depth (ftKB) 17308.2
Cement			
Description Conductor Cement		Top Depth (ftKB) 29.0	Bottom Depth (ftKB) 109.0
Description Surface cement job		Top Depth (ftKB) 29.0	Bottom Depth (ftKB) 1,933.7
Description Production Casing Cement		Top Depth (ftKB) 1,917.0	Bottom Depth (ftKB) 17,308.2
Tubing Strings			
Tubing Description TUBING - PRODUCTION	Run Date	String Make ID (in)	Wt (lb/ft)
		Grade	Len (ft)
			Set Depth
Other In Hole			
Run Date	Des	Make	OD (in)
			Top (ftKB)
			Btm (ftKB)
			Planned
Logs			
Date	Type	Depth Top (MD) (ftKB)	Btm (ftKB)
10/9/2022	Cement Bond Log	29	7,040.0