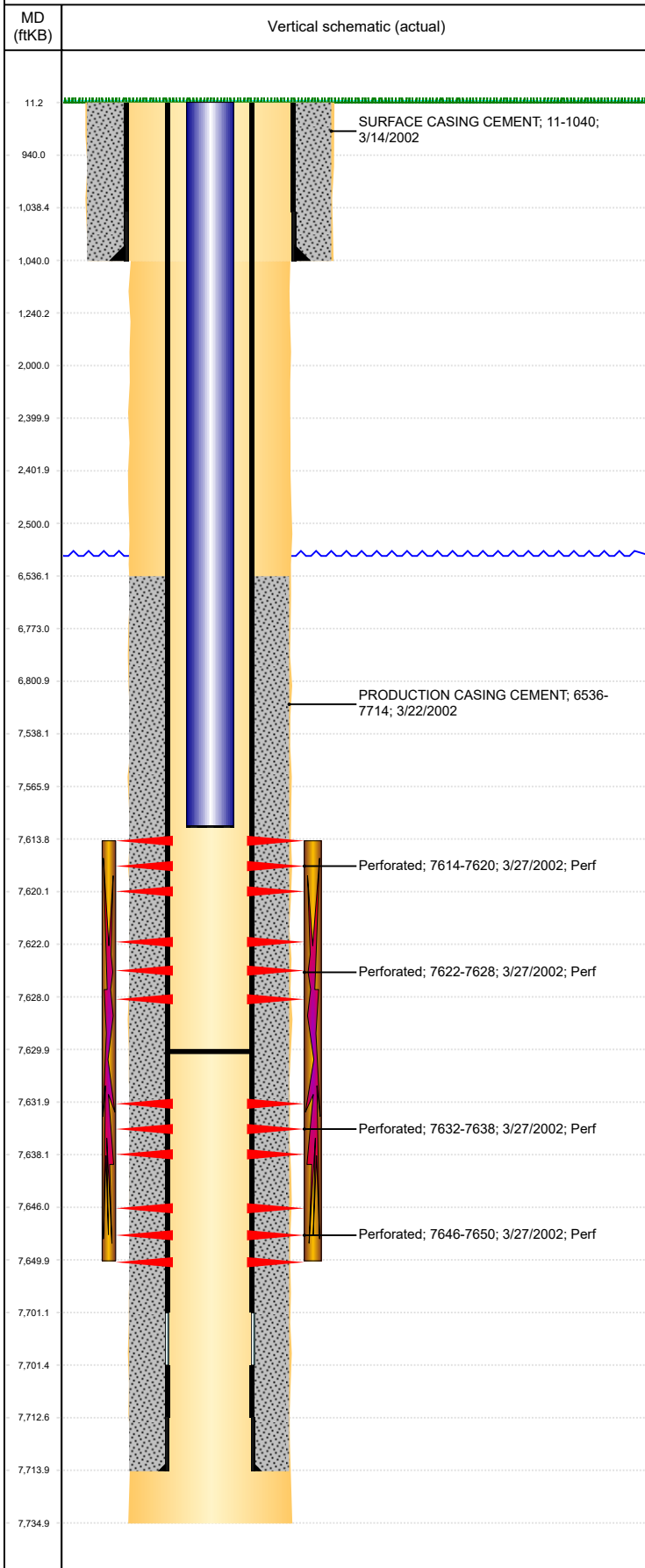




P&A Wellbore For State

Well Name: PARKER 29-34

Land, Original Hole, 10/17/2022 2:52:06 PM



Well Header									
Surface UWI 0512320684			Business Unit Rockies			Gov Auth Dist		Prod Tree Loc Land	
Orig. KB to Gnd (ft) 11.00		Original Spud Date 3/11/2002		Abandon Date		Well Sub-Status PR			High... N
Comment 2/19/05- TAGGED @ 7630', DID NOT C/O, ABOUT 60' SAND IN WELL. STATE SHOWS SHUT IN SINCE NOV 2015. FIELD OPS NOTICE- FLOWLINES ABANDONED PER RULE 1103, RCVD 9/8/17.									
Surface Location (Congressional)									
Qtr 3 SW	Qtr 4 SE	Section 29	Twnshp 2	Twnsh... N	Range 64	Rng E/... W	Latitude (°) 40.10494528 3	Longitude (°) -104.573202821	
Wellbore Sections									
Section Des			Hole Size (in)			Act Top (ftKB)		Act Btm (ftKB)	
SURFACE			12 1/4			11.0		1,040.0	
PRODUCTION			7 7/8			1,040.0		7,735.0	
Casing Strings									
Csg Des			Run Date		OD (in)	Wt/Len (lb/ft)	Grade	Top Depth (MD) (ftKB)	Set Depth (MD) (ftKB)
Surface			3/14/2002		8 5/8	24.00	?	11	1040
Production Casing			3/23/2002		4 1/2	11.60	N-80	11	7714
Cement									
Des					Start Date		Top (ftKB)		Btm (ftKB)
SURFACE CASING CEMENT					3/14/2002		11.0		1,040.0
PRODUCTION CASING CEMENT					3/22/2002		6,536.0		7,714.0
Zone Statuses									
Zone Name		Status Date	Status	Fluid Type	Job				Prod Method
J SAND		4/10/2002	PR	Oil	HORIZONTAL WELL PREP, 2/18/2015 15:00				Flowing
J SAND		2/17/2010	PR						Flowing
Perforation Data									
Linked Zone			Explosive Type	Entered Shot Total	Top (ftKB)		Btm (ftKB)		Date
J SAND, Original Hole				24	7,614.0		7,620.0		3/27/2002
J SAND, Original Hole				24	7,622.0		7,628.0		3/27/2002
J SAND, Original Hole				24	7,632.0		7,638.0		3/27/2002
J SAND, Original Hole				16	7,646.0		7,650.0		3/27/2002
Stimulation Intervals									
Zone					Start Date		Top (ftKB)		Btm (ftKB)
J SAND, Original Hole					3/29/2002		7,614.0		7,650.0
Other In Hole									
Run Date		Des			Make		OD (in)	Top (ftKB)	Btm (ftKB)
Logs									
Date		Type					Depth Top (MD) (ftKB)		Btm (ftKB)
3/23/2002		TRIPLE COMBO					6,440		7,689.0
3/27/2002		CBL/CCL/GR					6,440		7,689.0
10/19/2018		GYRO					11		6,650.0
Plug Back Total Depths									
Date		Type			Com				PBTD (ftKB)
4/2/2002		FILL			TAGGED TO LAND TUBING				7,692
2/19/2015		FILL-SAND			DID NOT C/O, PERFS PARTIALLY COVERED				7,630