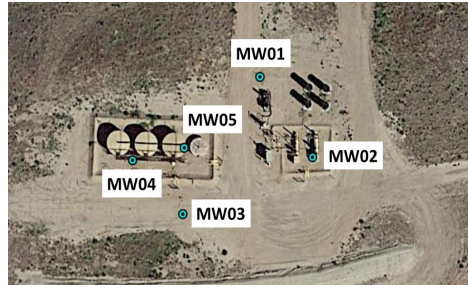




PDC Energy, Inc.
4000 Burlington Avenue
Evans, Colorado 80620

Heinze #1 Tank Battery

MW02



Date Started : 08/23/2022
Detector : MiniRae 3000 PID
Hole Diameter : 3.25-inch
Drilling Method : Direct Push
Sampling Method : Continuous
Drilling Company : DrillPro
Latitude : 40.524747°
Longitude : -104.475082°
Project Number : 022-009
Logged By : Ryan Finley

Depth in Feet	USCS	GRAPHIC	DESCRIPTION	Moisture	Structure	PID (ppm)	Staining	Lab Sample ID	Sample Run/Rec. (ft)	Well Construction:
0	SM		0-3: SILTY SAND, topsoil, dark brown, fine to medium grained, dry, Loose, no plasticity, no field-screen samples collected.	Dry	Loose	NS	N	NS	Potholed	Grout
5	SC		3-6: CLAYEY SAND, medium to light brown, fine to medium grained, very minor coarse grain, moist starting at 5-6 feet, medium dense, high plasticity, no odor or staining.	Moist	Medium	0.7	N	NS	4/4	Hydrated Bentonite
10	ML		6-15: SANDY SILT, brown, very fine grained to fine grained, moist, low dense, no plasticity, minor staining (<6") at ~6, 9, 12 and 13 feet, minor odor.	Moist	Medium	6.1	Y	NS	1/4	2" Sch-40 Solid PVC Riser,
15	GW		15-20 GRAVEL, Well Graded, medium brown, fine grained to fine gravel, minor layers (<1") of poorly graded gravels at ~15.5, 17, 17.5 and 20, very moist to wet, dense, no plasticity, no odor or staining.	Wet	Loose	0.6	N	NS	4/4	2" Sch-40 #10 Slotted PVC Screen
20									4/4	10-20 Silica Sand
25										Fill

TD at ~20. Well total depth = ~19 feet bgs with 15 feet of screen. Yellow steel stickup surface completion.

Static depth to water ~ 8.51 feet below top of casing, or appx. 5.5 feet below ground surface (measured 8/28/22).

