

LEGEND

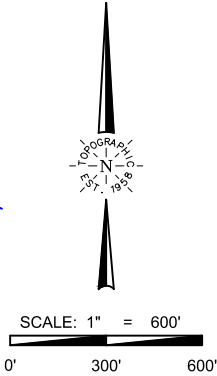
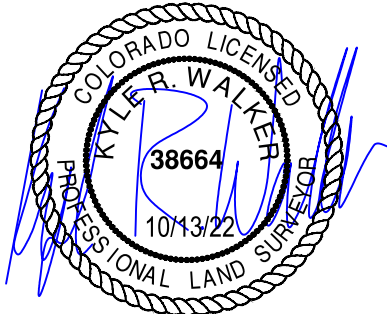
- COUNTY LINE
- SECTION LINE
- QUARTER SECTION LINE
- SIXTEENTH SECTION LINE
- POINT OF INTERSECTION
- MONUMENT FOUND
- CALCULATED CORNER



TOPOGRAPHIC
LOYALTY INNOVATION LEGACY
520 Stacy Court Ste B, Lafayette, CO 80026
303.666.0379 www.topographic.com

SURVEYOR'S STATEMENT
THE UNDERSIGNED HEREBY STATES THAT THE WELL LOCATION SHOWN HEREON WAS STAKED ON THE GROUND BASED ON EXISTING MONUMENTATION AND/OR PHYSICAL EVIDENCE FOUND IN THE FIELD AND IS CORRECT TO THE BEST OF MY KNOWLEDGE, INFORMATION AND BELIEF.

- NOTES**
- HORIZONTAL (NAD 83) AND VERTICAL (NAVD 88) DATUM IS BASED ON THE TRIMBLE VRS NETWORK. THE LINEAL UNITS OF MEASUREMENT ARE U.S. SURVEY FEET.
 - ALL DIRECTIONS, DISTANCES, AND DIMENSIONS SHOWN HEREON ARE BASED ON COORDINATES FROM THE "COLORADO COORDINATE SYSTEM OF 1983 NORTH ZONE" (TITLE 38, ARTICLE 52 C.R.S.).
 - ALL SECTION LINE DIMENSIONS SHOWN HEREON ARE BASED ON FIELD MEASUREMENTS OF EXISTING MONUMENTS AND/OR PHYSICAL EVIDENCE FOUND IN THE FIELD UNLESS OTHERWISE INDICATED.
 - PHYSICAL FEATURES SHOWN HEREON ARE FOR GRAPHICAL REPRESENTATION ONLY.
 - SEE FORM 2A FOR VISIBLE IMPROVEMENTS WITHIN 500' OF WELLHEAD.
 - DISTANCES TO NEAREST SECTION LINES ARE MEASURED PERPENDICULARLY.
 - THIS IS NOT A LAND SURVEY NOR LAND SURVEY PLAT.
- PDOP READING: 1.5 INSTRUMENT OPERATOR: TAYLOR ONLEY.



VERDAD RESOURCES			
FAWN 2833 01H			
FIELD	05/05/2021	DRAFT	SW
REV 2	10/13/2022	CHECK	ZAK
SHEET : 1 OF 2		JOB: 142264	

WELL LOCATION MAP

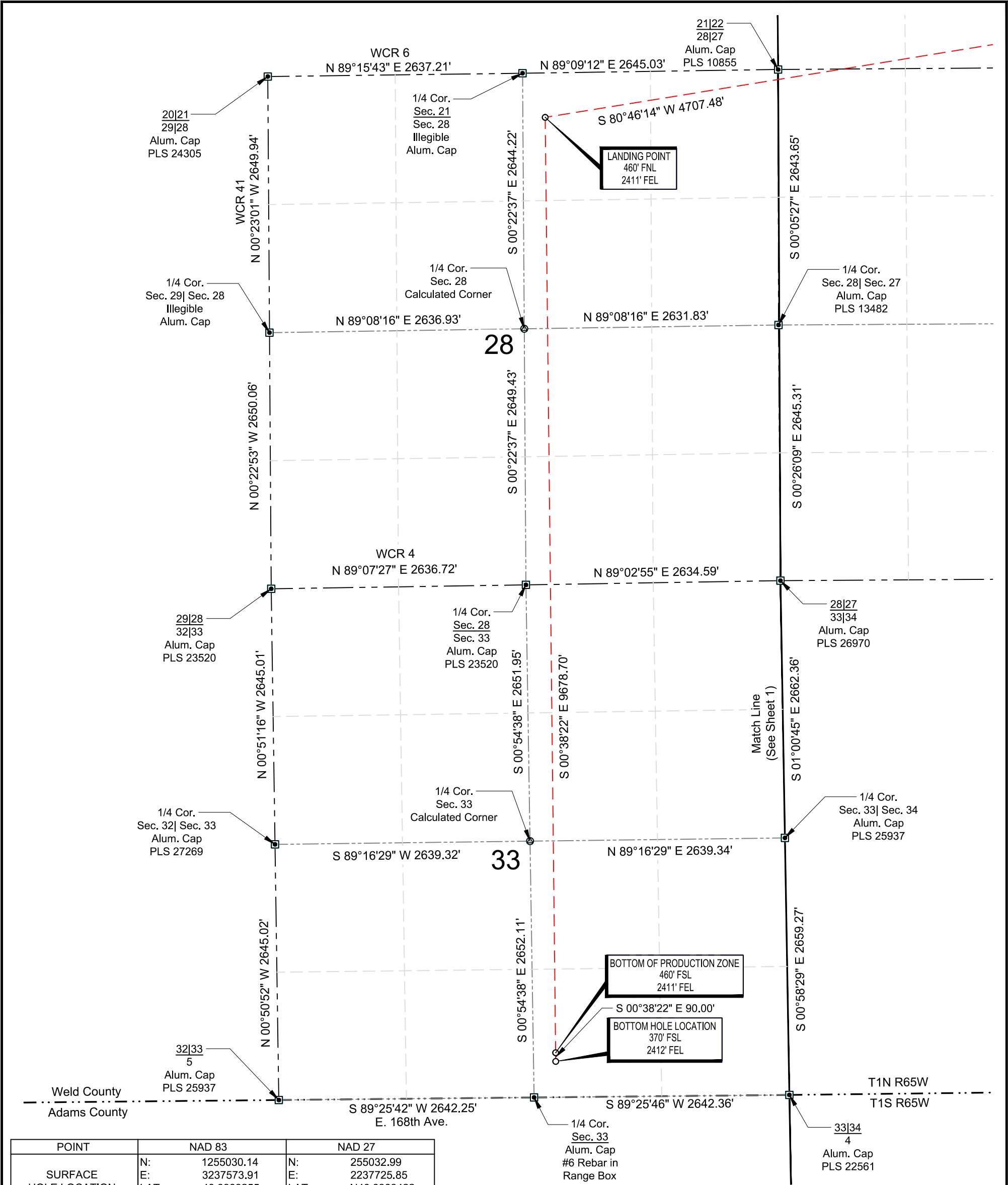
S.H.L. SE/4 SW/4, SECTION 22 T1N R65W 6TH PM

LP NW/4 NE/4, SECTION 28 T1N R65W 6TH PM

BPZ SW/4 SE/4, SECTION 33 T1N R65W 6TH PM

BHL SW/4 SE/4, SECTION 33 T1N R65W 6TH PM

WELD COUNTY, COLORADO



POINT	NAD 83	NAD 27
SURFACE HOLE LOCATION	N: 1255030.14	N: 255032.99
	E: 3237573.91	E: 2237725.85
	LAT: 40.0303255	LAT: N40.0303422
	LONG: W104.6515967	LONG: W104.6510762
LANDING POINT LOCATION	N: 1254275.12	N: 254277.96
	E: 3232927.37	E: 2233079.41
	LAT: N40.0283738	LAT: N40.0283905
	LONG: W104.6682144	LONG: W104.6676931
BOTTOM OF PRODUCTION ZONE	N: 1244597.03	N: 244599.97
	E: 3233035.40	E: 2233187.53
	LAT: N40.0018040	LAT: N40.0018205
	LONG: W104.6681528	LONG: W104.6676314
BOTTOM HOLE LOCATION	N: 1244507.03	N: 244509.98
	E: 3233036.41	E: 2233188.54
	LAT: N40.0015569	LAT: N40.0015735
	LONG: W104.6681522	LONG: W104.6676308



TOPOGRAPHIC

LOYALTY INNOVATION LEGACY

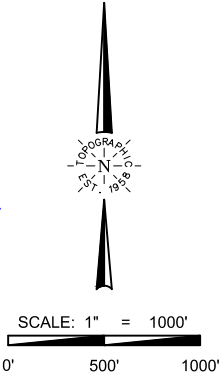
520 Stacy Court Ste B, Lafayette, CO 80026
303.666.0379 www.topographic.com

SURVEYOR'S STATEMENT
THE UNDERSIGNED HEREBY STATES THAT THE WELL LOCATION SHOWN HEREON WAS STAKED ON THE GROUND BASED ON EXISTING MONUMENTATION AND/OR PHYSICAL EVIDENCE FOUND IN THE FIELD AND IS CORRECT TO THE BEST OF MY KNOWLEDGE, INFORMATION AND BELIEF.

- NOTES**
- HORIZONTAL (NAD 83) AND VERTICAL (NAVD 88) DATUM IS BASED ON THE TRIMBLE VRS NETWORK. THE LINEAL UNITS OF MEASUREMENT ARE U.S. SURVEY FEET.
 - ALL DIRECTIONS, DISTANCES, AND DIMENSIONS SHOWN HEREON ARE BASED ON COORDINATES FROM THE "COLORADO COORDINATE SYSTEM OF 1983 NORTH ZONE" (TITLE 38, ARTICLE 52 C.R.S.).
 - ALL SECTION LINE DIMENSIONS SHOWN HEREON ARE BASED ON FIELD MEASUREMENTS OF EXISTING MONUMENTS AND/OR PHYSICAL EVIDENCE FOUND IN THE FIELD UNLESS OTHERWISE INDICATED.
 - PHYSICAL FEATURES SHOWN HEREON ARE FOR GRAPHICAL REPRESENTATION ONLY.
 - SEE FORM 2A FOR VISIBLE IMPROVEMENTS WITHIN 500' OF WELLHEAD.
 - DISTANCES TO NEAREST SECTION LINES ARE MEASURED PERPENDICULARLY.
 - THIS IS NOT A LAND SURVEY NOR LAND SURVEY PLAT.
 - PDOP READING: 1.5 INSTRUMENT OPERATOR: TAYLOR ONLEY.

LEGEND

- COUNTY LINE
- SECTION LINE
- QUARTER SECTION LINE
- SIXTEENTH SECTION LINE
- POINT OF INTERSECTION
- MONUMENT FOUND
- CALCULATED CORNER



VERDAD RESOURCES FAWN 2833 01H			
FIELD	05/05/2021	DRAFT	SW
REV 2	10/13/2022	CHECK	ZAK
SHEET : 2 OF 2		JOB: 142264	

WELL LOCATION MAP
S.H.L. SE/4 SW/4, SECTION 22 T1N R65W 6TH PM
LP NW/4 NE/4, SECTION 28 T1N R65W 6TH PM
BPZ SW/4 SE/4, SECTION 33 T1N R65W 6TH PM
BHL SW/4 SE/4, SECTION 33 T1N R65W 6TH PM
WELD COUNTY, COLORADO