



October 6, 2022

**Re: Colorado State Pit & Location Closure Report  
Investment Equipment LLC - Operator # 10330  
Colorado State 1&2 Pit (Facility ID 117586) SWNW Sec 36-3S-R53W,  
“A” 1 Pit (Facility ID 117587) NESW Sec 36-3S-R53W,  
Colorado State Location (Facility ID 470686),  
Remediation Project # 18894**

On behalf of Investment Equipment LLC, GIS Peace has prepared this Closure Report to document closure activities of the Colorado State 1&2 Pit (Facility ID 117586), the Colorado “A” 1 Pit (Facility ID 117587), and the Colorado State Location (Facility ID 470686) to request official COGCC closure of the Pits and Location so that regrading and reclamation activities can begin. This report summarizes remediation details including sample locations, analyte suites, and analytical results for closure of the Colorado State Pits and Location (Site). Closure activities were initiated with the submittal and approval of Closure Form 27 # (402646539), Remediation Project # 18894.

### **Pits & Location Characterization and Remediation Activities**

Characterization of the Pits began on December 2, 2021, with the excavation of the walls of the Pits in order to visually assess possible impacts and to collect confirmation soil samples from the Colorado “A” 1 Pit which is identified within this report as the East Pit (EP) as well as the Colorado State 1&2 Pit which is identified within this report as the West Pit (WP).

Four (4) soil samples (N, S, E, W) were collected from the sidewalls of the two Pits in the four cardinal directions and one from the base (B) of the West Pit excavation identified as WPB. Two soil samples were collected from the base (B) of the East Pit excavation identified as East Pit Base North (EPBN) and East Pit Base South (EPBS). Soil sample locations were documented using ArcGIS Collector. The soil samples were field screened for volatile organic compound (VOC) concentrations using a Photoionization Detector (PID) and then submitted to Summit Scientific Laboratory in Golden, Colorado, for analysis of Organic Compounds in Soils as per Table 915-1.

In addition, two Background samples (Background North, and Background South) and fourteen Berm and Surface samples were collected and analyzed for the Soil Suitability for Reclamation analysis as per Table 915-1.



On April 19, 2021, additional excavation was performed to remove impacted soils and to collect a confirmation sample at the West Pit North Wall (WPNW), the Pit Bases (3 samples) and the equipment locations of the Tank Battery (TB) (1 sample), Skim Tank (ST) (1 sample), and the Heater Treater (HT) (1 sample). At each equipment location two areas were field screened for VOC readings and the higher reading location was sampled.

On July 21, 2022, following additional excavation a confirmation sample was collected from the West Pit Base at a depth of 7' below ground surface / base of the Pit.

Field screening data, sample depths, and organic analytical results are included within the Colorado State 915-1 Soil Analytical Summary Table 1 and inorganic results are included within Table 2. Due to a technical issue photos from the December 2, 2021, sampling event were lost. Sample locations were documented using ArcGIS Collector and photos that were lost were photographed again during the July 21, 2022, sampling event, which have been included within the Colorado State Location Closure Photo Log.

### **Analytical Results**

Sample results from initial excavation and sampling revealed that the West Pit North Wall (WPNW) exceeded Table 915-1 standards for DRO, GRO, and TPH. Following additional excavation on 4/19/21 a WPNW confirmation sample was collected which exhibited concentrations below Table 915-1 standards.

A West Pit Base (WPB) confirmation sample collected on 4/19/21 exceeded Table 915-1 standards for DRO, GRO, and TPH. Following additional excavation on 7/21/22 a WPB @ 7' confirmation sample was collected at a depth of 7' bgs which exhibited concentrations below Table 915-1 standards.

Field screening data, sample depths, and organics analytical results are included within the Colorado State 915-1 Soil Analytical Summary Table 1 and inorganics results are included within Table 2. Sample location photos are included within the Colorado State Location Closure Photo Log. The associated analytical reports are included within Exhibit A, disposal waste manifests for 27 loads totaling ~ 540 cubic yards of impacted soils are included within Exhibit B.

### **Reclamation Planning**

With COGCC approval of the closure of the Site and Pits, reclamation activities in accordance with 1000 Series rules will begin. During regrading of the Site, Sodic soils will be buried below 3' bgs. Following regrading soil suitability sampling for reclamation will be performed at six locations across the Site as shown within Figure 2 – Sample Locations. Seeding of a winter wheat crop will be performed in any disturbed areas beginning in the Fall season of 2023. The local farmer will address any noxious weed control until the wheat crop is established.



## **Conclusions**

Analytical results included herein confirm that hydrocarbon impacts are no longer present at concentrations above Table 915-1 standards at the Colorado State equipment locations, as well as the two Pits. Therefore, Investment Equipment LLC requests the official COGCC closure of the Colorado State 1&2 Pit (Facility ID 117586), the Colorado "A" 1 Pit (Facility ID 117587), and the Colorado State Location (Facility ID 470686) so that regrading and reclamation in accordance with COGCC 1000 Series rules can begin. Following closure of the Pits and Location, Site soil suitability sampling for reclamation will be performed and submitted to COGCC under separate cover.

Please contact me directly if you have any questions regarding this report or require additional information.

Sincerely,  
GIS Peace LLC,

A handwritten signature in blue ink, appearing to read "Carter Peace".

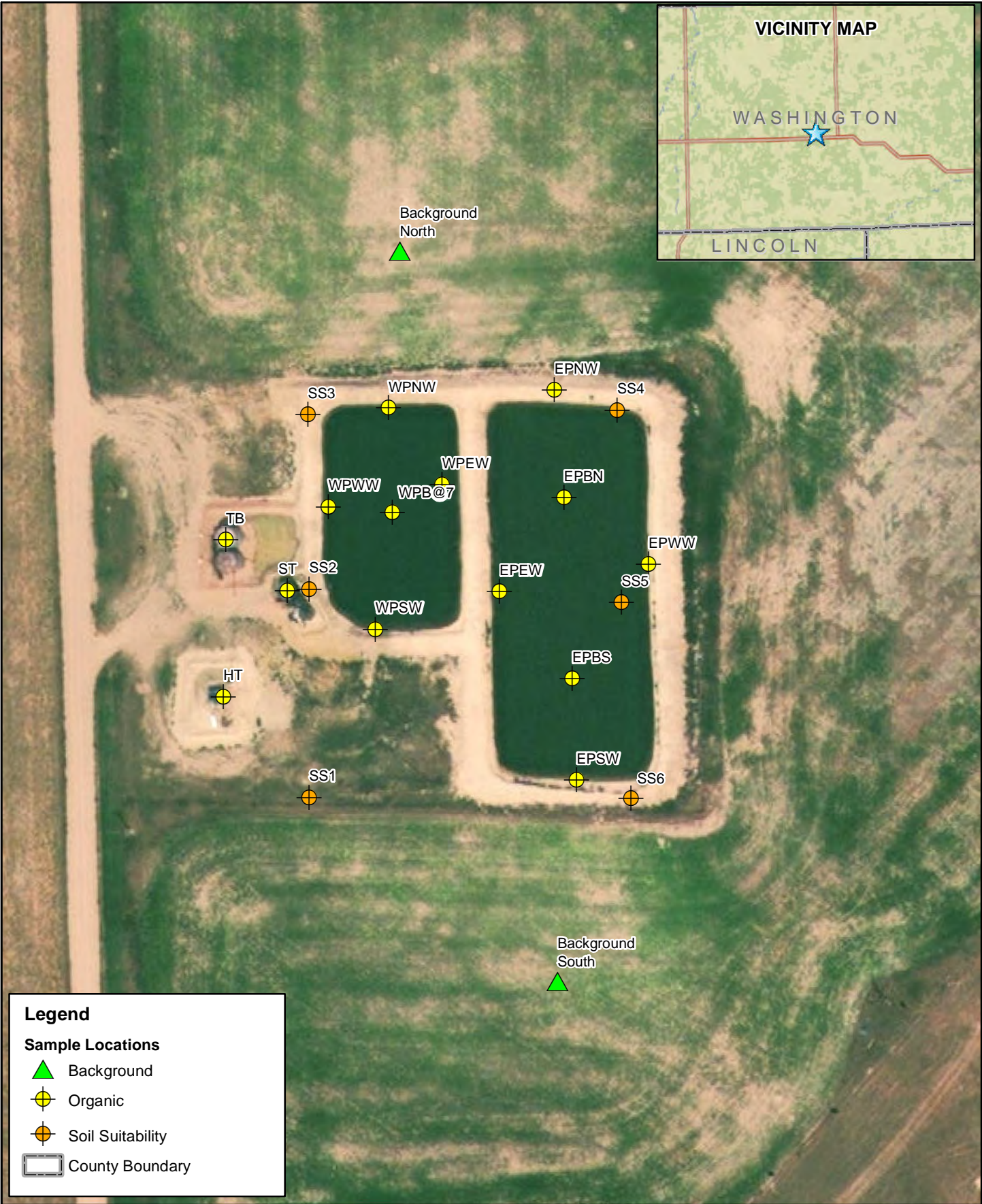
Carter Peace  
GIS Peace Environmental Scientist  
[carter.peace@gispeace.com](mailto:carter.peace@gispeace.com)  
(303) 854-7337

## **Attachments:**

Figure 1 – Site Location  
Figure 2 – Sample Locations  
Table 1- Colorado State 915-1 Soil Analytical Summary - Organics  
Table 2- Colorado State 915-1 Soil Analytical Summary - Inorganics  
Colorado State Location Closure Photo Log  
Exhibit A – Analytical Reports  
Exhibit B – Waste Disposal Manifests







<div> <div> 03570 Feet </div> <div> N </div> </div>		Investment Equipment, LLC	
		CO State Location Closure Washington County, Colorado	
DATE: 10/6/2022		Sample Locations	Figure 2
DESIGNED BY: C. Peace			
DRAWN BY: N. Peace			

**INVESTMENT EQUIPMENT LLC  
COLORADO STATE LOCATION CLOSURE  
TABLE 915-1 SOIL ANALYTICAL RESULTS SUMMARY**

	Table 915 <sup>(1)</sup> Standard (Residential)	WPWW (West pit west wall) 12/2/2021	WPNW (West pit north wall) 12/2/2021	WPEW (West pit east wall) 12/2/2021	WPSW (West pit south wall) 12/2/2021	EPWW (East pit west wall) 12/2/2021	EPNW (East pit north wall) 12/2/2021	EPEW (East pit east wall) 12/2/2021	EPSW (East pit south wall) 12/2/2021	WPNW (West pit north wall) 4/19/2022	WPB (West pit base) 4/19/2022	EPBN (East pit base north) 4/19/2022	EPBN (East pit base south) 4/19/2022	TB (Tank battery) 4/19/2022	ST (Skim tank) 4/19/2022	HT (Heater treater) 4/19/2022	WPB @ 7 (West pit base @ 7) 7/21/2022
Sample Depth		5'	5'	5'	5'	5'	3'	1'	1'	7'	1'	1'	1'	1'	1'	1'	7'
PID Reading <sup>(2)</sup>		10.8	20.9	1.04	13.7	9.3	0.7	0.2	0.3	14.7	122.9	6.7	2.4	0.7	1.7	0.4	31.4
<b>Organic Compounds in Soils</b>																	
Benzene (mg/kg)	1.2	<0.0020	<0.0020	<0.0020	<0.0020	<0.0020	<0.0020	<0.0020	<0.0020	<0.0020	<0.0020	<0.0020	<0.0020	<0.0020	<0.0020	<0.0020	<0.0020
Toluene (mg/kg)	490	<0.0050	<0.0050	<0.0050	<0.0050	<0.0050	<0.0050	<0.0050	<0.0050	<0.0050	<0.0050	<0.0050	<0.0050	<0.0050	<0.0050	<0.0050	<0.0050
Ethylbenzene (mg/kg)	5.8	<0.0050	<0.0050	<0.0050	<0.0050	<0.0050	<0.0050	<0.0050	<0.0050	<0.0050	<0.0050	<0.0050	<0.0050	<0.0050	<0.0050	<0.0050	<0.0050
Total Xylenes (mg/kg)	58	<0.010	<0.010	<0.010	<0.010	<0.010	<0.010	<0.010	<0.010	<0.010	<0.010	<0.010	<0.010	<0.010	<0.010	<0.010	<0.010
1,2,4 Trimethylbenzene	30	<0.0050	<0.0050	<0.0050	<0.0050	<0.0050	<0.0050	<0.0050	<0.0050	<0.0050	<0.0050	<0.0050	<0.0050	<0.0050	<0.0050	<0.0050	<0.0050
1,3,5 Trimethylbenzene	27	<0.0050	<0.0050	<0.0050	<0.0050	<0.0050	<0.0050	<0.0050	<0.0050	<0.0050	<0.0050	<0.0050	<0.0050	<0.0050	<0.0050	<0.0050	<0.0050
Napthalene	2	<0.0038	<0.0038	<0.0038	<0.0038	<0.0038	<0.0038	<0.0038	<0.0038	<0.0038	<0.0038	<0.0038	<0.0038	<0.0038	<0.0038	<0.0038	<0.0038
GRO (mg/kg)	500	<0.50	<0.50	<0.50	<0.50	<0.50	<0.50	<0.50	<0.50	1.4	1,100	1.9	0.86	<0.50	<0.50	<0.50	<0.50
C10-C28 DRO (mg/kg)	500	<50	7,000	<50	<50	<50	<50	<50	<50	320	1,500	<50	<50	<50	<50	<50	<50
C28-C36 ORO (mg/kg)	500	<50	1,300	<50	<50	<50	<50	<50	<50	<50	290	<50	<50	<50	<50	<50	<50
TPH <sup>(3)</sup> (mg/kg)	500	<50	8,300	<50	<50	<50	<50	<50	<50	321.4	2,890	<50	<50	<50	<50	<50	<50

**INVESTMENT EQUIPMENT LLC  
COLORADO STATE LOCATION CLOSURE  
TABLE 915-1 SOIL ANALYTICAL RESULTS SUMMARY**

	Table 915 <sup>(1)</sup> Standard (Residential)	WPWW (West pit west wall) 12/2/2021	WPNW (West pit north wall) 12/2/2021	WPEW (West pit east wall) 12/2/2021	WPSW (West pit south wall) 12/2/2021	EPWW (East pit west wall) 12/2/2021	EPNW (East pit north wall) 12/2/2021	EPEW (East pit east wall) 12/2/2021	EPSW (East pit south wall) 12/2/2021	WPNW (West pit north wall) 4/19/2022	WPB (West pit base) 4/19/2022	EPBN (East pit base north) 4/19/2022	EPBN (East pit base south) 4/19/2022	TB (Tank battery) 4/19/2022	ST (Skim tank) 4/19/2022	HT (Heater treater) 4/19/2022	WPB @ 7 (West pit base @ 7) 7/21/2022
Acenaphthene	360	<0.00500	<0.00500	<0.00500	<0.00500	<0.00500	<0.00500	<0.00500	<0.00500	<0.00500	<0.00500	<0.00500	<0.00500	<0.00500	<0.00500	<0.00500	<0.00500
Anthracene	1800	<0.00500	<0.00500	<0.00500	<0.00500	<0.00500	<0.00500	<0.00500	<0.00500	<0.00500	<0.00500	<0.00500	<0.00500	<0.00500	<0.00500	<0.00500	<0.00500
Benzo (a) anthracene	1.1	<0.00500	<0.00500	<0.00500	<0.00500	<0.00500	<0.00500	<0.00500	<0.00500	<0.00500	<0.00500	<0.00500	<0.00500	<0.00500	<0.00500	<0.00500	<0.00500
Benzo (a) pyrene	0.11	<0.00500	<0.00500	<0.00500	<0.00500	<0.00500	<0.00500	<0.00500	<0.00500	<0.00500	<0.00500	<0.00500	<0.00500	<0.00500	<0.00500	<0.00500	<0.00500
Benzo (b) fluoranthene	1.1	<0.00500	<0.00500	<0.00500	0.0221	<0.00500	<0.00500	<0.00500	<0.00500	<0.00500	0.0677	<0.00500	<0.00500	<0.00500	<0.00500	<0.00500	<0.00500
Benzo (k) fluoranthene	11	<0.00500	<0.00500	<0.00500	<0.00500	<0.00500	<0.00500	<0.00500	<0.00500	<0.00500	<0.00500	<0.00500	<0.00500	<0.00500	<0.00500	<0.00500	<0.00500
Chrysene	110	0.00799	0.0343	0.00953	0.00434	0.00841	<0.00500	<0.00500	<0.00500	<0.00500	0.136	0.0355	0.00510	<0.00500	<0.00500	<0.00500	<0.00500
Dibenz (a,h) anthracene	0.11	<0.00500	<0.00500	<0.00500	<0.00500	<0.00500	<0.00500	<0.00500	<0.00500	<0.00500	<0.00500	<0.00500	<0.00500	<0.00500	<0.00500	<0.00500	<0.00500
Fluoranthene	240	<0.00500	<0.00500	<0.00500	<0.00500	<0.00500	<0.00500	<0.00500	<0.00500	<0.00500	<0.00500	<0.00500	<0.00500	<0.00500	<0.00500	<0.00500	<0.00500
Fluorene	240	<0.00500	<0.00500	<0.00500	<0.00500	<0.00500	<0.00500	<0.00500	<0.00500	<0.00500	<0.00500	<0.00500	<0.00500	<0.00500	<0.00500	<0.00500	<0.00500
Indeno (1,2,3-cd) pyrene	1.1	<0.00500	<0.00500	<0.00500	<0.00500	<0.00500	<0.00500	<0.00500	<0.00500	<0.00500	<0.00500	<0.00500	<0.00500	<0.00500	<0.00500	<0.00500	<0.00500
Pyrene	180	<0.00500	0.0142	<0.00500	0.0401	<0.00500	<0.00500	<0.00500	<0.00500	<0.00500	0.146	<0.00500	<0.00500	<0.00500	<0.00500	<0.00500	<0.00500

**INVESTMENT EQUIPMENT LLC  
COLORADO STATE LOCATION CLOSURE  
TABLE 915-1 SOIL ANALYTICAL RESULTS SUMMARY**

	<b>Table 915 <sup>(1)</sup> Standard (Residential)</b>	<b>WPWW (West pit west wall) 12/2/2021</b>	<b>WPNW (West pit north wall) 12/2/2021</b>	<b>WPEW (West pit east wall) 12/2/2021</b>	<b>WPSW (West pit south wall) 12/2/2021</b>	<b>EPWW (East pit west wall) 12/2/2021</b>	<b>EPNW (East pit north wall) 12/2/2021</b>	<b>EPEW (East pit east wall) 12/2/2021</b>	<b>EPSW (East pit south wall) 12/2/2021</b>	<b>WPNW (West pit north wall) 4/19/2022</b>	<b>WPB (West pit base) 4/19/2022</b>	<b>EPBN (East pit base north) 4/19/2022</b>	<b>EPBN (East pit base south) 4/19/2022</b>	<b>TB (Tank battery) 4/19/2022</b>	<b>ST (Skim tank) 4/19/2022</b>	<b>HT (Heater treater) 4/19/2022</b>	<b>WPB @ 7 (West pit base @ 7) 7/21/2022</b>
<b>1- Methylnaphthalene</b>	18	<0.00500	<0.00500	<0.00500	<0.00500	<0.00500	<0.00500	<0.00500	<0.00500	<0.00500	<0.00500	<0.00500	<0.00500	<0.00500	<0.00500	<0.00500	<0.00500
<b>2- Methylnaphthalene</b>	24	<0.00500	<0.00500	<0.00500	<0.00500	<0.00500	<0.00500	<0.00500	<0.00500	<0.00500	<0.00500	<0.00500	<0.00500	<0.00500	<0.00500	<0.00500	<0.00500

1. Standards for soil are taken from Table 915-1, effective January 15, 2021.

2. PID - Photo-ionization detector

3. TPH - Total volatile and extractable petroleum hydrocarbons. Value calculated by adding GRO, ORO, and DRO concentrations.

COGCC = Colorado Oil and Gas Conservation Commission

(<) = Analytical result is less than the indicated laboratory reporting limit.

GRO = Total volatile petroleum hydrocarbons - gasoline range organics

DRO = Total extractable petroleum hydrocarbons - diesel range organics

ORO = Total volatile petroleum hydrocarbons - oil range organics

mg/kg = Milligrams per kilogram

**BOLD** = Analytical result is in exceedance of COGCC Table 915-1 soil standards.



**INVESTMENT EQUIPMENT LLC  
COLORADO STATE LOCATION CLOSURE  
TABLE 915-1 SOIL ANALYTICAL RESULTS SUMMARY**

	Table 915 <sup>(1)</sup> Standard (Residential)	BACKGROUND NORTH 12/2/21	BACKGROUND SOUTH 12/2/21	WPSB <sup>(2)</sup> 12/2/21	WPSS <sup>(2)</sup> 12/2/21	Center Berm (CB) 12/2/21	Center Surface (CS) 12/2/21	WPWB 12/2/21	WPWS 12/2/21	WPNB 12/2/21	WPNS 12/2/21	EPSB <sup>(3)</sup> 12/2/21	EPSS <sup>(3)</sup> 12/2/21	EPEB 12/2/21	EPES 12/2/21	EPNB 12/2/21	EPNS 12/2/21
<b>SOIL SUITABILITY FOR RECLAMATION</b>																	
<b>Boron</b>	2 mg/l	0.6	0.7	<b>2.1</b>	<b>3</b>	<b>2.3</b>	0.4	<b>2.4</b>	<b>5.2</b>	1.1	0.8	<b>2.4</b>	<b>2.6</b>	<b>2.5</b>	<b>2.5</b>	<b>2.4</b>	1.8
<b>Calcium</b>	<1.25 x Background	2.71 (3.38) <sup>(4)</sup>	6.69 (8.36) <sup>(4)</sup>	0.51	0.59	<b>34.5</b>	7	7.56	0.61	<b>10.34</b>	<b>17.88</b>	1.18	2.21	0.42	0.64	0.74	<b>58.6</b>
<b>Magnesium</b>	<1.25 x Background	0.68 (0.85) <sup>(4)</sup>	1.65 (2.06) <sup>(4)</sup>	0.26	0.25	<b>8.08</b>	<b>1.95</b>	<b>4.85</b>	0.3	<b>3.71</b>	<b>8.91</b>	0.49	0.95	0.2	0.27	0.3	<b>20.2</b>
<b>Sodium</b>	<1.25 x Background	0.48 (0.6) <sup>(4)</sup>	0.38 (0.475) <sup>(4)</sup>	<b>25.14</b>	<b>12.16</b>	<b>187</b>	<b>161</b>	<b>44.75</b>	<b>41.21</b>	<b>35.7</b>	<b>18</b>	<b>19.77</b>	<b>22.13</b>	<b>21.89</b>	<b>8.77</b>	<b>26.65</b>	<b>128</b>
<b>Sodium Adsorption Ratio</b>	<6	0.37	0.19	<b>40.52</b>	<b>18.76</b>	<b>57.36</b>	1.18	<b>17.96</b>	<b>61.09</b>	<b>13.47</b>	<b>4.96</b>	<b>21.64</b>	<b>17.61</b>	<b>39.32</b>	<b>13</b>	<b>20.21</b>	3.68
<b>Specific Conductance (EC)</b>	<4mmhos/cm	0.65	0.97	1.8	1.27	2.97	<b>4.19</b>	3.15	3.2	2.64	2.67	1.48	1.61	2.07	1.15	<b>27.89</b>	1.83
<b>pH</b>	6-8.3	7.85 (9.81) <sup>(4)</sup>	7.80 (9.75) <sup>(4)</sup>	8.72	8.73	8.81	7.37	7.96	9.33	7.74	7.72	8.76	8.54	9.16	8.34	8.62	9.07

**Notes:**

- Standards for soil are taken from Table 915-1, effective January 15, 2021.
  - WPSB - West Pit South Berm. WPSS - West Pit South Surface
  - EPSB - East Pit South Berm. EPSS - East Pit South Surface
  - (3.38) <sup>(2)</sup> Calculated 1.25 x Background Value
- BOLD** = Analytical result is in exceedance of COGCC Table 915-1 soil standards.

INVESTMENT EQUIPMENT LLC  
COLORADO STATE LOCATION CLOSURE  
SWNW Sec 36 - T 3S - R 53W  
Soil Sample Location Photos



Background North Soil Sample Location 7/21/2022

INVESTMENT EQUIPMENT LLC  
COLORADO STATE LOCATION CLOSURE  
SWNW Sec 36 - T 3S - R 53W  
Soil Sample Location Photos



Background South Soil Sample Location 7/21/2022



INVESTMENT EQUIPMENT LLC  
COLORADO STATE LOCATION CLOSURE  
SWNW Sec 36 - T 3S - R 53W  
Soil Sample Location Photos



West Pit Base @ 7' Soil Sample Location 7/21/2022

INVESTMENT EQUIPMENT LLC  
COLORADO STATE LOCATION CLOSURE  
SWNW Sec 36 - T 3S - R 53W  
Soil Sample Location Photos



West Pit East Wall (WPEW) Soil Sample Location 7/21/2022



INVESTMENT EQUIPMENT LLC  
COLORADO STATE LOCATION CLOSURE  
SWNW Sec 36 - T 3S - R 53W  
Soil Sample Location Photos



West Pit North Wall (WPNW) Soil Sample Location 7/21/2022

INVESTMENT EQUIPMENT LLC  
COLORADO STATE LOCATION CLOSURE  
SWNW Sec 36 - T 3S - R 53W  
Soil Sample Location Photos



West Pit West Wall (WPWW) Soil Sample Location 7/21/2022



INVESTMENT EQUIPMENT LLC  
COLORADO STATE LOCATION CLOSURE  
SWNW Sec 36 - T 3S - R 53W  
Soil Sample Location Photos



West Pit South Wall (WPSW) Soil Sample Location 7/21/2022

INVESTMENT EQUIPMENT LLC  
COLORADO STATE LOCATION CLOSURE  
SWNW Sec 36 - T 3S - R 53W  
Soil Sample Location Photos



East Pit North Wall (EPNW) Soil Sample Location 7/21/2022



INVESTMENT EQUIPMENT LLC  
COLORADO STATE LOCATION CLOSURE  
SWNW Sec 36 - T 3S - R 53W  
Soil Sample Location Photos



East Pit West Wall (EPWW) Soil Sample Location 7/21/2022



INVESTMENT EQUIPMENT LLC  
COLORADO STATE LOCATION CLOSURE  
SWNW Sec 36 - T 3S - R 53W  
Soil Sample Location Photos



East Pit South Wall (EPSW) Soil Sample Location 7/21/2022

INVESTMENT EQUIPMENT LLC  
COLORADO STATE LOCATION CLOSURE  
SWNW Sec 36 - T 3S - R 53W  
Soil Sample Location Photos



East Pit East Wall (EPEW) Soil Sample Location 7/21/2022



INVESTMENT EQUIPMENT LLC  
COLORADO STATE LOCATION CLOSURE  
SWNW Sec 36 - T 3S - R 53W  
Soil Sample Location Photos



West Pit North Wall (WPNW) Soil Sample Location 4/19/2021

INVESTMENT EQUIPMENT LLC  
COLORADO STATE LOCATION CLOSURE  
SWNW Sec 36 - T 3S - R 53W  
Soil Sample Location Photos



West Pit Base (WPB) Soil Sample Location 4/19/2021



INVESTMENT EQUIPMENT LLC  
COLORADO STATE LOCATION CLOSURE  
SWNW Sec 36 - T 3S - R 53W  
Soil Sample Location Photos



East Pit Base South (EPBS) Soil Sample Location 4/19/2021



INVESTMENT EQUIPMENT LLC  
COLORADO STATE LOCATION CLOSURE  
SWNW Sec 36 - T 3S - R 53W  
Soil Sample Location Photos



East Pit Base North (EPBN) Soil Sample Location 4/19/2021

INVESTMENT EQUIPMENT LLC  
COLORADO STATE LOCATION CLOSURE  
SWNW Sec 36 - T 3S - R 53W  
Soil Sample Location Photos



Tank Battery (TB) Soil Sample Location 4/19/2021



INVESTMENT EQUIPMENT LLC  
COLORADO STATE LOCATION CLOSURE  
SWNW Sec 36 - T 3S - R 53W  
Soil Sample Location Photos



Skim Tank (ST) Soil Sample Location 4/19/2021

INVESTMENT EQUIPMENT LLC  
COLORADO STATE LOCATION CLOSURE  
SWNW Sec 36 - T 3S - R 53W  
Soil Sample Location Photos



Heater Treater (HT) Soil Sample Location 4/19/2021



INVESTMENT EQUIPMENT LLC  
COLORADO STATE LOCATION CLOSURE  
SWNW Sec 36 - T 3S - R 53W  
Soil Sample Location Photos



West Pit following removal of impacted soils 9/29/2022



INVESTMENT EQUIPMENT LLC  
COLORADO STATE LOCATION CLOSURE  
SWNW Sec 36 - T 3S - R 53W  
Soil Sample Location Photos



West Pit following removal of impacted soils 9/29/2022

INVESTMENT EQUIPMENT LLC  
COLORADO STATE LOCATION CLOSURE  
SWNW Sec 36 - T 3S - R 53W  
Soil Sample Location Photos



West Pit following removal of impacted soils 9/29/2022



INVESTMENT EQUIPMENT LLC  
COLORADO STATE LOCATION CLOSURE  
SWNW Sec 36 - T 3S - R 53W  
Soil Sample Location Photos



West Pit following removal of impacted soils 9/29/2022



INVESTMENT EQUIPMENT LLC  
COLORADO STATE LOCATION CLOSURE  
SWNW Sec 36 - T 3S - R 53W  
Soil Sample Location Photos



West Pit following removal of impacted soils 9/29/2022

INVESTMENT EQUIPMENT LLC  
COLORADO STATE LOCATION CLOSURE  
SWNW Sec 36 - T 3S - R 53W  
Soil Sample Location Photos



West Pit following removal of impacted soils 9/29/2022



INVESTMENT EQUIPMENT LLC  
COLORADO STATE LOCATION CLOSURE  
SWNW Sec 36 - T 3S - R 53W  
Soil Sample Location Photos



West Pit following removal of impacted soils 9/29/2022



INVESTMENT EQUIPMENT LLC  
COLORADO STATE LOCATION CLOSURE  
SWNW Sec 36 - T 3S - R 53W  
Soil Sample Location Photos



West Pit following removal of impacted soils 9/29/2022

INVESTMENT EQUIPMENT LLC  
COLORADO STATE LOCATION CLOSURE  
SWNW Sec 36 - T 3S - R 53W  
Soil Sample Location Photos



West Pit stockpiled soils following removal of impacted soils 9/29/2022



INVESTMENT EQUIPMENT LLC  
COLORADO STATE LOCATION CLOSURE  
SWNW Sec 36 - T 3S - R 53W  
Soil Sample Location Photos



West Pit following removal of impacted soils 9/29/2022



INVESTMENT EQUIPMENT LLC  
COLORADO STATE LOCATION CLOSURE  
SWNW Sec 36 - T 3S - R 53W  
Soil Sample Location Photos



West Pit following removal of impacted soils 9/29/2022

INVESTMENT EQUIPMENT LLC  
COLORADO STATE LOCATION CLOSURE  
SWNW Sec 36 - T 3S - R 53W  
Soil Sample Location Photos



Background South Soil Sample Location 7/21/2022



INVESTMENT EQUIPMENT LLC  
COLORADO STATE LOCATION CLOSURE  
SWNW Sec 36 - T 3S - R 53W  
Soil Sample Location Photos



West Pit following removal of impacted soils 9/29/2022



INVESTMENT EQUIPMENT LLC  
COLORADO STATE LOCATION CLOSURE  
SWNW Sec 36 - T 3S - R 53W  
Soil Sample Location Photos



West Pit following removal of impacted soils 9/29/2022

## Exhibit A



# Summit Scientific

---

4653 Table Mountain Drive, Golden, Colorado 80403

303.277.9310

December 23, 2021

Carter Peace

GIS Peace

2951 Niagara St

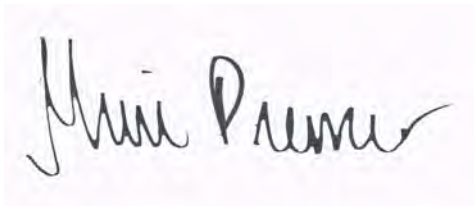
Denver, CO 80207

RE: CO State #1 Pit Closure

Work Order #2112084

Enclosed are the results of analyses for samples received by Summit Scientific on 12/03/21 10:30. If you have any questions concerning this report, please feel free to contact me.

Sincerely,

A handwritten signature in black ink, reading "Muri Premer". The signature is written in a cursive style with a large initial "M" and a long, sweeping underline.

Muri Premer For Paul Shrewsbury  
President



GIS Peace  
2951 Niagara St  
Denver CO, 80207

Project: CO State #1 Pit Closure

Project Number: [none]  
Project Manager: Carter Peace

**Reported:**  
12/23/21 11:37

#### ANALYTICAL REPORT FOR SAMPLES

Sample ID	Laboratory ID	Matrix	Date Sampled	Date Received
WPWW	2112084-01	Soil	12/02/21 00:00	12/03/21 10:30
WPNW	2112084-02	Soil	12/02/21 00:00	12/03/21 10:30
WPEW	2112084-03	Soil	12/02/21 00:00	12/03/21 10:30
WPSW	2112084-04	Soil	12/02/21 00:00	12/03/21 10:30
EPWW	2112084-05	Soil	12/02/21 00:00	12/03/21 10:30
EPNW	2112084-06	Soil	12/02/21 00:00	12/03/21 10:30
EPEW	2112084-07	Soil	12/02/21 00:00	12/03/21 10:30
EPSW	2112084-08	Soil	12/02/21 00:00	12/03/21 10:30

Summit Scientific

*The results in this report apply to the samples analyzed in accordance with the chain of custody document. This analytical report must be reproduced in its entirety.*



# Summit Scientific

S<sub>2</sub>

2112084

4653 Table Mountain Drive ♦ Golden, Colorado 80403  
303-277-9310

Client: GIS PEACE Project Manager: C. PEACE Page 1 of 1  
Address: \_\_\_\_\_ E-Mail: \_\_\_\_\_  
City/State/Zip: \_\_\_\_\_  
Phone: \_\_\_\_\_ Project Name: CO STATE #1 PIT CLOSURE  
Sampler Name: CJP Project Number: \_\_\_\_\_

ID	Sample Description	Date Sampled	Time Sampled	# of containers	Preservative				Matrix				Analysis Requested								Special Instructions
					HCl	HNO <sub>3</sub>	None	Other	Water	Soil	Air-Canister #	Other									
1	WPWW	12/2/21					X			X			X								
2	WPNW																				
3	WPEW																				
4	WPSW																				
5	EPWW																				
6	EPNW																				
7	EP EW																				
8	EPSW																				
9																					
10																					

Relinquished by: <u>[Signature]</u>	Date/Time: <u>12/3/21 10:30</u>	Received by: <u>[Signature]</u>	Date/Time: <u>12/3/21 10:30</u>	Turn Around Time (Check) Same Day <input type="checkbox"/> 72 hours 24 hours <input type="checkbox"/> Standard <input checked="" type="checkbox"/> 48 hours <input type="checkbox"/>	<b>Full GIS Notes:</b> <u>ORGANICS - GNBTEX</u> <u>DRO/ORO/GRO</u> <u>PAH</u>
Relinquished by:	Date/Time:	Received by:	Date/Time:	Sample Integrity: Temperature Upon Receipt: <u>8.2</u> Samples Intact: <input checked="" type="radio"/> Yes <input type="radio"/> No	
Relinquished by:	Date/Time:	Received by:	Date/Time:		

S<sub>2</sub>

2112084

## Sample Receipt Checklist

S2 Work Order#

Client: GIS PEACE Client Project ID: Co State #1 PIT ClosureShipped Via: ☐ H.D. ☒ P.U. ☐ FedEx ☐ UPS ☐ USPS ☐ Other \_\_\_\_\_ Airbill #: \_\_\_\_\_Matrix (check all that apply): ☐ Air ☒ Soil/Solid ☐ Water ☐ Other: \_\_\_\_\_  
(Describe)Temp (°C) 8.2

Thermometer ID: G86A9201901378

	Yes	No	N/A	Comments (if any)
If samples require cooling, was the temperature at 4°C +/- 2°C <sup>(1)</sup> ? NOTE: If samples are delivered the same day of sampling, this requirement is met if there is evidence that cooling has begun.	<input checked="" type="checkbox"/>	<input type="checkbox"/>	<input type="checkbox"/>	ON ICE
Were all samples received intact <sup>(1)</sup> ?	<input checked="" type="checkbox"/>	<input type="checkbox"/>	<input type="checkbox"/>	
Was adequate sample volume provided <sup>(1)</sup> ?	<input checked="" type="checkbox"/>	<input type="checkbox"/>	<input type="checkbox"/>	
If custody seals are present, are they intact <sup>(1)</sup> ?	<input checked="" type="checkbox"/>	<input type="checkbox"/>	<input type="checkbox"/>	
Are samples with holding times due within 48 hours sample due within 48 hours present?	<input type="checkbox"/>	<input checked="" type="checkbox"/>	<input type="checkbox"/>	
Is a chain-of-custody (COC) form present and filled out completely <sup>(1)</sup> ?	<input checked="" type="checkbox"/>	<input type="checkbox"/>	<input type="checkbox"/>	
Does the COC agree with the number and type of sample bottles received <sup>(1)</sup> ?	<input checked="" type="checkbox"/>	<input type="checkbox"/>	<input type="checkbox"/>	
Do the sample IDs on the bottle labels match the COC <sup>(1)</sup> ?	<input checked="" type="checkbox"/>	<input type="checkbox"/>	<input type="checkbox"/>	
Is the COC properly relinquished by the client w/ date and time recorded <sup>(1)</sup> ?	<input checked="" type="checkbox"/>	<input type="checkbox"/>	<input type="checkbox"/>	
For volatiles in water – is there headspace present? If yes, contact client and note in narrative.	<input type="checkbox"/>	<input type="checkbox"/>	<input checked="" type="checkbox"/>	
Are samples preserved that require preservation (excluding cooling) <sup>(1)</sup> ? Note the type of preservative in the Comments column – HCl, H <sub>2</sub> SO <sub>4</sub> , NaOH, HNO <sub>3</sub> , etc.	<input type="checkbox"/>	<input type="checkbox"/>	<input checked="" type="checkbox"/>	
If samples are acid preserved for metals, is the pH ≤ 2 <sup>(1)</sup> ? Record the pH in Comments.	<input type="checkbox"/>	<input type="checkbox"/>	<input checked="" type="checkbox"/>	
If dissolved metals are requested, were samples field filtered?	<input type="checkbox"/>	<input type="checkbox"/>	<input checked="" type="checkbox"/>	

Additional Comments (if any):

<sup>(1)</sup> If NO, then contact the client before proceeding with analysis and note in case narrative.
  
 Custodian Printed Name or Initials

12-3-21  
 Date/Time





GIS Peace  
2951 Niagara St  
Denver CO, 80207

Project: CO State #1 Pit Closure

Project Number: [none]  
Project Manager: Carter Peace

**Reported:**  
12/23/21 11:37

**WPWW**  
**2112084-01 (Soil)**

**Summit Scientific**

**Volatile Organic Compounds by EPA Method 8260B**

Date Sampled: **12/02/21 00:00**

Analyte	Result	Reporting Limit	Units	Dilution	Batch	Prepared	Analyzed	Method	Notes
Benzene	ND	0.0020	mg/kg	1	BEL0140	12/07/21	12/08/21	EPA 8260B	
Toluene	ND	0.0050	"	"	"	"	"	"	
Ethylbenzene	ND	0.0050	"	"	"	"	"	"	
Xylenes (total)	ND	0.010	"	"	"	"	"	"	
1,2,4-Trimethylbenzene	ND	0.0050	"	"	"	"	"	"	
1,3,5-Trimethylbenzene	ND	0.0050	"	"	"	"	"	"	
Naphthalene	ND	0.0038	"	"	"	"	"	"	
Gasoline Range Hydrocarbons	ND	0.50	"	"	"	"	"	"	

Date Sampled: **12/02/21 00:00**

Analyte	Result	Reporting Limit	Units	Dilution	Batch	Prepared	Analyzed	Method	Notes
Surrogate: 1,2-Dichloroethane-d4		114 %	23-173		"	"	"	"	
Surrogate: Toluene-d8		112 %	20-170		"	"	"	"	
Surrogate: 4-Bromofluorobenzene		114 %	21-167		"	"	"	"	

**Extractable Petroleum Hydrocarbons by 8015**

Date Sampled: **12/02/21 00:00**

Analyte	Result	Reporting Limit	Units	Dilution	Batch	Prepared	Analyzed	Method	Notes
C10-C28 (DRO)	ND	50	mg/kg	1	BEL0141	12/07/21	12/08/21	EPA 8015M	
C28-C36 (ORO)	ND	50	"	"	"	"	"	"	

Date Sampled: **12/02/21 00:00**

Analyte	Result	Reporting Limit	Units	Dilution	Batch	Prepared	Analyzed	Method	Notes
Surrogate: o-Terphenyl		111 %	30-150		"	"	"	"	

**PAH by EPA Method 8270D SIM**

Summit Scientific

The results in this report apply to the samples analyzed in accordance with the chain of custody document. This analytical report must be reproduced in its entirety.



GIS Peace  
2951 Niagara St  
Denver CO, 80207

Project: CO State #1 Pit Closure

Project Number: [none]  
Project Manager: Carter Peace

**Reported:**  
12/23/21 11:37

**WPWW**  
**2112084-01 (Soil)**

**Summit Scientific**

**PAH by EPA Method 8270D SIM**

Date Sampled: **12/02/21 00:00**

Analyte	Result	Reporting Limit	Units	Dilution	Batch	Prepared	Analyzed	Method	Notes
Acenaphthene	ND	0.00500	mg/kg	1	BEL0154	12/08/21	12/13/21	EPA 8270D SIM	
Anthracene	ND	0.00500	"	"	"	"	"	"	
Benzo (a) anthracene	ND	0.00500	"	"	"	"	"	"	
Benzo (a) pyrene	ND	0.00500	"	"	"	"	"	"	
Benzo (b) fluoranthene	ND	0.00500	"	"	"	"	"	"	
Benzo (k) fluoranthene	ND	0.00500	"	"	"	"	"	"	
<b>Chrysene</b>	<b>0.00799</b>	0.00500	"	"	"	"	"	"	
Dibenz (a,h) anthracene	ND	0.00500	"	"	"	"	"	"	
Fluoranthene	ND	0.00500	"	"	"	"	"	"	
Fluorene	ND	0.00500	"	"	"	"	"	"	
Indeno (1,2,3-cd) pyrene	ND	0.00500	"	"	"	"	"	"	
Pyrene	ND	0.00500	"	"	"	"	"	"	
1-Methylnaphthalene	ND	0.00500	"	"	"	"	"	"	
2-Methylnaphthalene	ND	0.00500	"	"	"	"	"	"	

Date Sampled: **12/02/21 00:00**

Analyte	Result	Reporting Limit	Units	Dilution	Batch	Prepared	Analyzed	Method	Notes
Surrogate: 2-Methylnaphthalene-d10		79.9 %	40-150		"	"	"	"	
Surrogate: Fluoranthene-d10		67.6 %	40-150		"	"	"	"	

Summit Scientific

The results in this report apply to the samples analyzed in accordance with the chain of custody document. This analytical report must be reproduced in its entirety.





GIS Peace  
2951 Niagara St  
Denver CO, 80207

Project: CO State #1 Pit Closure

Project Number: [none]  
Project Manager: Carter Peace

**Reported:**  
12/23/21 11:37

**WPNW**  
**2112084-02 (Soil)**

**Summit Scientific**

**Volatile Organic Compounds by EPA Method 8260B**

Date Sampled: **12/02/21 00:00**

Analyte	Result	Reporting	Units	Dilution	Batch	Prepared	Analyzed	Method	Notes
		Limit							
Benzene	ND	0.0020	mg/kg	1	BEL0140	12/07/21	12/08/21	EPA 8260B	
Toluene	ND	0.0050	"	"	"	"	"	"	
Ethylbenzene	ND	0.0050	"	"	"	"	"	"	
Xylenes (total)	ND	0.010	"	"	"	"	"	"	
1,2,4-Trimethylbenzene	ND	0.0050	"	"	"	"	"	"	
1,3,5-Trimethylbenzene	ND	0.0050	"	"	"	"	"	"	
Naphthalene	ND	0.0038	"	"	"	"	"	"	
Gasoline Range Hydrocarbons	ND	0.50	"	"	"	"	"	"	

Date Sampled: **12/02/21 00:00**

Analyte	Result	Reporting	Units	Dilution	Batch	Prepared	Analyzed	Method	Notes
		Limit							
Surrogate: 1,2-Dichloroethane-d4		120 %	23-173		"	"	"	"	
Surrogate: Toluene-d8		126 %	20-170		"	"	"	"	
Surrogate: 4-Bromofluorobenzene		125 %	21-167		"	"	"	"	

**Extractable Petroleum Hydrocarbons by 8015**

Date Sampled: **12/02/21 00:00**

Analyte	Result	Reporting	Units	Dilution	Batch	Prepared	Analyzed	Method	Notes
		Limit							
C10-C28 (DRO)	7000	50	mg/kg	1	BEL0141	12/07/21	12/08/21	EPA 8015M	
C28-C36 (ORO)	1300	50	"	"	"	"	"	"	

Date Sampled: **12/02/21 00:00**

Analyte	Result	Reporting	Units	Dilution	Batch	Prepared	Analyzed	Method	Notes
		Limit							
Surrogate: o-Terphenyl		96.4 %	30-150		"	"	"	"	

**PAH by EPA Method 8270D SIM**

Summit Scientific

The results in this report apply to the samples analyzed in accordance with the chain of custody document. This analytical report must be reproduced in its entirety.



GIS Peace  
2951 Niagara St  
Denver CO, 80207

Project: CO State #1 Pit Closure

Project Number: [none]  
Project Manager: Carter Peace

**Reported:**  
12/23/21 11:37

**WPNW**  
**2112084-02 (Soil)**

**Summit Scientific**

**PAH by EPA Method 8270D SIM**

Date Sampled: **12/02/21 00:00**

Analyte	Result	Reporting Limit	Units	Dilution	Batch	Prepared	Analyzed	Method	Notes
Acenaphthene	ND	0.00500	mg/kg	1	BEL0154	12/08/21	12/13/21	EPA 8270D SIM	
Anthracene	ND	0.00500	"	"	"	"	"	"	
Benzo (a) anthracene	ND	0.00500	"	"	"	"	"	"	
Benzo (a) pyrene	ND	0.00500	"	"	"	"	"	"	
Benzo (b) fluoranthene	ND	0.00500	"	"	"	"	"	"	
Benzo (k) fluoranthene	ND	0.00500	"	"	"	"	"	"	
<b>Chrysene</b>	<b>0.0343</b>	0.00500	"	"	"	"	"	"	
Dibenz (a,h) anthracene	ND	0.00500	"	"	"	"	"	"	
Fluoranthene	ND	0.00500	"	"	"	"	"	"	
Fluorene	ND	0.00500	"	"	"	"	"	"	
Indeno (1,2,3-cd) pyrene	ND	0.00500	"	"	"	"	"	"	
<b>Pyrene</b>	<b>0.0142</b>	0.00500	"	"	"	"	"	"	
1-Methylnaphthalene	ND	0.00500	"	"	"	"	"	"	
2-Methylnaphthalene	ND	0.00500	"	"	"	"	"	"	

Date Sampled: **12/02/21 00:00**

Analyte	Result	Reporting Limit	Units	Dilution	Batch	Prepared	Analyzed	Method	Notes
Surrogate: 2-Methylnaphthalene-d10		72.3 %	40-150		"	"	"	"	
Surrogate: Fluoranthene-d10		69.3 %	40-150		"	"	"	"	

Summit Scientific

The results in this report apply to the samples analyzed in accordance with the chain of custody document. This analytical report must be reproduced in its entirety.





GIS Peace  
2951 Niagara St  
Denver CO, 80207

Project: CO State #1 Pit Closure

Project Number: [none]  
Project Manager: Carter Peace

**Reported:**  
12/23/21 11:37

**WPEW**  
**2112084-03 (Soil)**

**Summit Scientific**

**Volatile Organic Compounds by EPA Method 8260B**

Date Sampled: **12/02/21 00:00**

Analyte	Result	Reporting	Units	Dilution	Batch	Prepared	Analyzed	Method	Notes
		Limit							
Benzene	ND	0.0020	mg/kg	1	BEL0140	12/07/21	12/08/21	EPA 8260B	
Toluene	ND	0.0050	"	"	"	"	"	"	
Ethylbenzene	ND	0.0050	"	"	"	"	"	"	
Xylenes (total)	ND	0.010	"	"	"	"	"	"	
1,2,4-Trimethylbenzene	ND	0.0050	"	"	"	"	"	"	
1,3,5-Trimethylbenzene	ND	0.0050	"	"	"	"	"	"	
Naphthalene	ND	0.0038	"	"	"	"	"	"	
Gasoline Range Hydrocarbons	ND	0.50	"	"	"	"	"	"	

Date Sampled: **12/02/21 00:00**

Analyte	Result	Reporting	Units	Dilution	Batch	Prepared	Analyzed	Method	Notes
		Limit							
Surrogate: 1,2-Dichloroethane-d4		118 %	23-173		"	"	"	"	
Surrogate: Toluene-d8		105 %	20-170		"	"	"	"	
Surrogate: 4-Bromofluorobenzene		102 %	21-167		"	"	"	"	

**Extractable Petroleum Hydrocarbons by 8015**

Date Sampled: **12/02/21 00:00**

Analyte	Result	Reporting	Units	Dilution	Batch	Prepared	Analyzed	Method	Notes
		Limit							
C10-C28 (DRO)	ND	50	mg/kg	1	BEL0141	12/07/21	12/08/21	EPA 8015M	
C28-C36 (ORO)	ND	50	"	"	"	"	"	"	

Date Sampled: **12/02/21 00:00**

Analyte	Result	Reporting	Units	Dilution	Batch	Prepared	Analyzed	Method	Notes
		Limit							
Surrogate: o-Terphenyl		111 %	30-150		"	"	"	"	

**PAH by EPA Method 8270D SIM**

Summit Scientific

The results in this report apply to the samples analyzed in accordance with the chain of custody document. This analytical report must be reproduced in its entirety.



GIS Peace  
2951 Niagara St  
Denver CO, 80207

Project: CO State #1 Pit Closure

Project Number: [none]  
Project Manager: Carter Peace

**Reported:**  
12/23/21 11:37

**WPEW**  
**2112084-03 (Soil)**

**Summit Scientific**

**PAH by EPA Method 8270D SIM**

Date Sampled: **12/02/21 00:00**

Analyte	Result	Reporting	Units	Dilution	Batch	Prepared	Analyzed	Method	Notes
		Limit							
Acenaphthene	ND	0.00500	mg/kg	1	BEL0154	12/08/21	12/13/21	EPA 8270D SIM	
Anthracene	ND	0.00500	"	"	"	"	"	"	
Benzo (a) anthracene	ND	0.00500	"	"	"	"	"	"	
Benzo (a) pyrene	ND	0.00500	"	"	"	"	"	"	
Benzo (b) fluoranthene	ND	0.00500	"	"	"	"	"	"	
Benzo (k) fluoranthene	ND	0.00500	"	"	"	"	"	"	
<b>Chrysene</b>	<b>0.00953</b>	0.00500	"	"	"	"	"	"	
Dibenz (a,h) anthracene	ND	0.00500	"	"	"	"	"	"	
Fluoranthene	ND	0.00500	"	"	"	"	"	"	
Fluorene	ND	0.00500	"	"	"	"	"	"	
Indeno (1,2,3-cd) pyrene	ND	0.00500	"	"	"	"	"	"	
Pyrene	ND	0.00500	"	"	"	"	"	"	
1-Methylnaphthalene	ND	0.00500	"	"	"	"	"	"	
2-Methylnaphthalene	ND	0.00500	"	"	"	"	"	"	

Date Sampled: **12/02/21 00:00**

Analyte	Result	Reporting	Units	Dilution	Batch	Prepared	Analyzed	Method	Notes
		Limit							
Surrogate: 2-Methylnaphthalene-d10		63.1 %	40-150		"	"	"	"	
Surrogate: Fluoranthene-d10		53.4 %	40-150		"	"	"	"	

Summit Scientific

The results in this report apply to the samples analyzed in accordance with the chain of custody document. This analytical report must be reproduced in its entirety.



GIS Peace  
2951 Niagara St  
Denver CO, 80207

Project: CO State #1 Pit Closure

Project Number: [none]  
Project Manager: Carter Peace

**Reported:**  
12/23/21 11:37

**WPSW**  
**2112084-04 (Soil)**

**Summit Scientific**

**Volatile Organic Compounds by EPA Method 8260B**

Date Sampled: **12/02/21 00:00**

Analyte	Result	Reporting	Units	Dilution	Batch	Prepared	Analyzed	Method	Notes
		Limit							
Benzene	ND	0.0020	mg/kg	1	BEL0140	12/07/21	12/08/21	EPA 8260B	
Toluene	ND	0.0050	"	"	"	"	"	"	
Ethylbenzene	ND	0.0050	"	"	"	"	"	"	
Xylenes (total)	ND	0.010	"	"	"	"	"	"	
1,2,4-Trimethylbenzene	ND	0.0050	"	"	"	"	"	"	
1,3,5-Trimethylbenzene	ND	0.0050	"	"	"	"	"	"	
Naphthalene	ND	0.0038	"	"	"	"	"	"	
Gasoline Range Hydrocarbons	ND	0.50	"	"	"	"	"	"	

Date Sampled: **12/02/21 00:00**

Analyte	Result	Reporting	Units	Dilution	Batch	Prepared	Analyzed	Method	Notes
		Limit							
Surrogate: 1,2-Dichloroethane-d4		110 %	23-173		"	"	"	"	
Surrogate: Toluene-d8		117 %	20-170		"	"	"	"	
Surrogate: 4-Bromofluorobenzene		114 %	21-167		"	"	"	"	

**Extractable Petroleum Hydrocarbons by 8015**

Date Sampled: **12/02/21 00:00**

Analyte	Result	Reporting	Units	Dilution	Batch	Prepared	Analyzed	Method	Notes
		Limit							
C10-C28 (DRO)	ND	50	mg/kg	1	BEL0141	12/07/21	12/08/21	EPA 8015M	
C28-C36 (ORO)	ND	50	"	"	"	"	"	"	

Date Sampled: **12/02/21 00:00**

Analyte	Result	Reporting	Units	Dilution	Batch	Prepared	Analyzed	Method	Notes
		Limit							
Surrogate: o-Terphenyl		92.7 %	30-150		"	"	"	"	

**PAH by EPA Method 8270D SIM**

Summit Scientific

The results in this report apply to the samples analyzed in accordance with the chain of custody document. This analytical report must be reproduced in its entirety.





GIS Peace  
2951 Niagara St  
Denver CO, 80207

Project: CO State #1 Pit Closure

Project Number: [none]  
Project Manager: Carter Peace

**Reported:**  
12/23/21 11:37

**WPSW**  
**2112084-04 (Soil)**

**Summit Scientific**

**PAH by EPA Method 8270D SIM**

Date Sampled: **12/02/21 00:00**

Analyte	Result	Reporting Limit	Units	Dilution	Batch	Prepared	Analyzed	Method	Notes
Acenaphthene	ND	0.00500	mg/kg	1	BEL0154	12/08/21	12/13/21	EPA 8270D SIM	
Anthracene	ND	0.00500	"	"	"	"	"	"	
Benzo (a) anthracene	ND	0.00500	"	"	"	"	"	"	
Benzo (a) pyrene	ND	0.00500	"	"	"	"	"	"	
<b>Benzo (b) fluoranthene</b>	<b>0.0221</b>	0.00500	"	"	"	"	"	"	
Benzo (k) fluoranthene	ND	0.00500	"	"	"	"	"	"	
<b>Chrysene</b>	<b>0.0434</b>	0.00500	"	"	"	"	"	"	
Dibenz (a,h) anthracene	ND	0.00500	"	"	"	"	"	"	
Fluoranthene	ND	0.00500	"	"	"	"	"	"	
Fluorene	ND	0.00500	"	"	"	"	"	"	
Indeno (1,2,3-cd) pyrene	ND	0.00500	"	"	"	"	"	"	
<b>Pyrene</b>	<b>0.0401</b>	0.00500	"	"	"	"	"	"	
1-Methylnaphthalene	ND	0.00500	"	"	"	"	"	"	
2-Methylnaphthalene	ND	0.00500	"	"	"	"	"	"	

Date Sampled: **12/02/21 00:00**

Analyte	Result	Reporting Limit	Units	Dilution	Batch	Prepared	Analyzed	Method	Notes
Surrogate: 2-Methylnaphthalene-d10		65.8 %	40-150		"	"	"	"	
Surrogate: Fluoranthene-d10		42.3 %	40-150		"	"	"	"	

Summit Scientific

The results in this report apply to the samples analyzed in accordance with the chain of custody document. This analytical report must be reproduced in its entirety.



GIS Peace  
2951 Niagara St  
Denver CO, 80207

Project: CO State #1 Pit Closure

Project Number: [none]  
Project Manager: Carter Peace

**Reported:**  
12/23/21 11:37

**EPWW**  
**2112084-05 (Soil)**

**Summit Scientific**

**Volatile Organic Compounds by EPA Method 8260B**

Date Sampled: **12/02/21 00:00**

Analyte	Result	Reporting	Units	Dilution	Batch	Prepared	Analyzed	Method	Notes
		Limit							
Benzene	ND	0.0020	mg/kg	1	BEL0140	12/07/21	12/08/21	EPA 8260B	
Toluene	ND	0.0050	"	"	"	"	"	"	
Ethylbenzene	ND	0.0050	"	"	"	"	"	"	
Xylenes (total)	ND	0.010	"	"	"	"	"	"	
1,2,4-Trimethylbenzene	ND	0.0050	"	"	"	"	"	"	
1,3,5-Trimethylbenzene	ND	0.0050	"	"	"	"	"	"	
Naphthalene	ND	0.0038	"	"	"	"	"	"	
Gasoline Range Hydrocarbons	ND	0.50	"	"	"	"	"	"	

Date Sampled: **12/02/21 00:00**

Analyte	Result	Reporting	Units	Dilution	Batch	Prepared	Analyzed	Method	Notes
		Limit							
Surrogate: 1,2-Dichloroethane-d4		123 %	23-173		"	"	"	"	
Surrogate: Toluene-d8		107 %	20-170		"	"	"	"	
Surrogate: 4-Bromofluorobenzene		114 %	21-167		"	"	"	"	

**Extractable Petroleum Hydrocarbons by 8015**

Date Sampled: **12/02/21 00:00**

Analyte	Result	Reporting	Units	Dilution	Batch	Prepared	Analyzed	Method	Notes
		Limit							
C10-C28 (DRO)	ND	50	mg/kg	1	BEL0141	12/07/21	12/08/21	EPA 8015M	
C28-C36 (ORO)	ND	50	"	"	"	"	"	"	

Date Sampled: **12/02/21 00:00**

Analyte	Result	Reporting	Units	Dilution	Batch	Prepared	Analyzed	Method	Notes
		Limit							
Surrogate: o-Terphenyl		82.0 %	30-150		"	"	"	"	

**PAH by EPA Method 8270D SIM**

Summit Scientific

The results in this report apply to the samples analyzed in accordance with the chain of custody document. This analytical report must be reproduced in its entirety.



GIS Peace  
2951 Niagara St  
Denver CO, 80207

Project: CO State #1 Pit Closure

Project Number: [none]  
Project Manager: Carter Peace

**Reported:**  
12/23/21 11:37

**EPWW**  
**2112084-05 (Soil)**

**Summit Scientific**

**PAH by EPA Method 8270D SIM**

Date Sampled: **12/02/21 00:00**

Analyte	Result	Reporting Limit	Units	Dilution	Batch	Prepared	Analyzed	Method	Notes
Acenaphthene	ND	0.00500	mg/kg	1	BEL0154	12/08/21	12/13/21	EPA 8270D SIM	
Anthracene	ND	0.00500	"	"	"	"	"	"	
Benzo (a) anthracene	ND	0.00500	"	"	"	"	"	"	
Benzo (a) pyrene	ND	0.00500	"	"	"	"	"	"	
Benzo (b) fluoranthene	ND	0.00500	"	"	"	"	"	"	
Benzo (k) fluoranthene	ND	0.00500	"	"	"	"	"	"	
<b>Chrysene</b>	<b>0.00841</b>	0.00500	"	"	"	"	"	"	
Dibenz (a,h) anthracene	ND	0.00500	"	"	"	"	"	"	
Fluoranthene	ND	0.00500	"	"	"	"	"	"	
Fluorene	ND	0.00500	"	"	"	"	"	"	
Indeno (1,2,3-cd) pyrene	ND	0.00500	"	"	"	"	"	"	
Pyrene	ND	0.00500	"	"	"	"	"	"	
1-Methylnaphthalene	ND	0.00500	"	"	"	"	"	"	
2-Methylnaphthalene	ND	0.00500	"	"	"	"	"	"	

Date Sampled: **12/02/21 00:00**

Analyte	Result	Reporting Limit	Units	Dilution	Batch	Prepared	Analyzed	Method	Notes
Surrogate: 2-Methylnaphthalene-d10		57.3 %	40-150		"	"	"	"	
Surrogate: Fluoranthene-d10		49.3 %	40-150		"	"	"	"	

Summit Scientific

The results in this report apply to the samples analyzed in accordance with the chain of custody document. This analytical report must be reproduced in its entirety.





GIS Peace  
2951 Niagara St  
Denver CO, 80207

Project: CO State #1 Pit Closure

Project Number: [none]  
Project Manager: Carter Peace

**Reported:**  
12/23/21 11:37

**EPNW**  
**2112084-06 (Soil)**

**Summit Scientific**

**Volatile Organic Compounds by EPA Method 8260B**

Date Sampled: **12/02/21 00:00**

Analyte	Result	Reporting	Units	Dilution	Batch	Prepared	Analyzed	Method	Notes
		Limit							
Benzene	ND	0.0020	mg/kg	1	BEL0140	12/07/21	12/08/21	EPA 8260B	
Toluene	ND	0.0050	"	"	"	"	"	"	
Ethylbenzene	ND	0.0050	"	"	"	"	"	"	
Xylenes (total)	ND	0.010	"	"	"	"	"	"	
1,2,4-Trimethylbenzene	ND	0.0050	"	"	"	"	"	"	
1,3,5-Trimethylbenzene	ND	0.0050	"	"	"	"	"	"	
Naphthalene	ND	0.0038	"	"	"	"	"	"	
Gasoline Range Hydrocarbons	ND	0.50	"	"	"	"	"	"	

Date Sampled: **12/02/21 00:00**

Analyte	Result	Reporting	Units	Dilution	Batch	Prepared	Analyzed	Method	Notes
		Limit							
Surrogate: 1,2-Dichloroethane-d4		122 %	23-173		"	"	"	"	
Surrogate: Toluene-d8		109 %	20-170		"	"	"	"	
Surrogate: 4-Bromofluorobenzene		113 %	21-167		"	"	"	"	

**Extractable Petroleum Hydrocarbons by 8015**

Date Sampled: **12/02/21 00:00**

Analyte	Result	Reporting	Units	Dilution	Batch	Prepared	Analyzed	Method	Notes
		Limit							
C10-C28 (DRO)	ND	50	mg/kg	1	BEL0141	12/07/21	12/08/21	EPA 8015M	
C28-C36 (ORO)	ND	50	"	"	"	"	"	"	

Date Sampled: **12/02/21 00:00**

Analyte	Result	Reporting	Units	Dilution	Batch	Prepared	Analyzed	Method	Notes
		Limit							
Surrogate: o-Terphenyl		106 %	30-150		"	"	"	"	

**PAH by EPA Method 8270D SIM**

Summit Scientific

The results in this report apply to the samples analyzed in accordance with the chain of custody document. This analytical report must be reproduced in its entirety.



GIS Peace  
2951 Niagara St  
Denver CO, 80207

Project: CO State #1 Pit Closure

Project Number: [none]  
Project Manager: Carter Peace

**Reported:**  
12/23/21 11:37

**EPNW**  
**2112084-06 (Soil)**

**Summit Scientific**

**PAH by EPA Method 8270D SIM**

Date Sampled: **12/02/21 00:00**

Analyte	Result	Reporting	Units	Dilution	Batch	Prepared	Analyzed	Method	Notes
		Limit							
Acenaphthene	ND	0.00500	mg/kg	1	BEL0154	12/08/21	12/13/21	EPA 8270D SIM	
Anthracene	ND	0.00500	"	"	"	"	"	"	
Benzo (a) anthracene	ND	0.00500	"	"	"	"	"	"	
Benzo (a) pyrene	ND	0.00500	"	"	"	"	"	"	
Benzo (b) fluoranthene	ND	0.00500	"	"	"	"	"	"	
Benzo (k) fluoranthene	ND	0.00500	"	"	"	"	"	"	
Chrysene	ND	0.00500	"	"	"	"	"	"	
Dibenz (a,h) anthracene	ND	0.00500	"	"	"	"	"	"	
Fluoranthene	ND	0.00500	"	"	"	"	"	"	
Fluorene	ND	0.00500	"	"	"	"	"	"	
Indeno (1,2,3-cd) pyrene	ND	0.00500	"	"	"	"	"	"	
Pyrene	ND	0.00500	"	"	"	"	"	"	
1-Methylnaphthalene	ND	0.00500	"	"	"	"	"	"	
2-Methylnaphthalene	ND	0.00500	"	"	"	"	"	"	

Date Sampled: **12/02/21 00:00**

Analyte	Result	Reporting	Units	Dilution	Batch	Prepared	Analyzed	Method	Notes
		Limit							
Surrogate: 2-Methylnaphthalene-d10		48.2 %	40-150		"	"	"	"	
Surrogate: Fluoranthene-d10		54.5 %	40-150		"	"	"	"	

Summit Scientific

The results in this report apply to the samples analyzed in accordance with the chain of custody document. This analytical report must be reproduced in its entirety.



GIS Peace  
2951 Niagara St  
Denver CO, 80207

Project: CO State #1 Pit Closure

Project Number: [none]  
Project Manager: Carter Peace

**Reported:**  
12/23/21 11:37

**EPEW**  
**2112084-07 (Soil)**

**Summit Scientific**

**Volatile Organic Compounds by EPA Method 8260B**

Date Sampled: **12/02/21 00:00**

Analyte	Result	Reporting	Units	Dilution	Batch	Prepared	Analyzed	Method	Notes
		Limit							
Benzene	ND	0.0020	mg/kg	1	BEL0140	12/07/21	12/08/21	EPA 8260B	
Toluene	ND	0.0050	"	"	"	"	"	"	
Ethylbenzene	ND	0.0050	"	"	"	"	"	"	
Xylenes (total)	ND	0.010	"	"	"	"	"	"	
1,2,4-Trimethylbenzene	ND	0.0050	"	"	"	"	"	"	
1,3,5-Trimethylbenzene	ND	0.0050	"	"	"	"	"	"	
Naphthalene	ND	0.0038	"	"	"	"	"	"	
Gasoline Range Hydrocarbons	ND	0.50	"	"	"	"	"	"	

Date Sampled: **12/02/21 00:00**

Analyte	Result	Reporting	Units	Dilution	Batch	Prepared	Analyzed	Method	Notes
		Limit							
Surrogate: 1,2-Dichloroethane-d4		121 %	23-173		"	"	"	"	
Surrogate: Toluene-d8		110 %	20-170		"	"	"	"	
Surrogate: 4-Bromofluorobenzene		109 %	21-167		"	"	"	"	

**Extractable Petroleum Hydrocarbons by 8015**

Date Sampled: **12/02/21 00:00**

Analyte	Result	Reporting	Units	Dilution	Batch	Prepared	Analyzed	Method	Notes
		Limit							
C10-C28 (DRO)	ND	50	mg/kg	1	BEL0141	12/07/21	12/08/21	EPA 8015M	
C28-C36 (ORO)	ND	50	"	"	"	"	"	"	

Date Sampled: **12/02/21 00:00**

Analyte	Result	Reporting	Units	Dilution	Batch	Prepared	Analyzed	Method	Notes
		Limit							
Surrogate: o-Terphenyl		97.7 %	30-150		"	"	"	"	

**PAH by EPA Method 8270D SIM**

Summit Scientific

The results in this report apply to the samples analyzed in accordance with the chain of custody document. This analytical report must be reproduced in its entirety.





GIS Peace  
2951 Niagara St  
Denver CO, 80207

Project: CO State #1 Pit Closure

Project Number: [none]  
Project Manager: Carter Peace

**Reported:**  
12/23/21 11:37

**EPEW**  
**2112084-07 (Soil)**

**Summit Scientific**

**PAH by EPA Method 8270D SIM**

Date Sampled: **12/02/21 00:00**

Analyte	Result	Reporting	Units	Dilution	Batch	Prepared	Analyzed	Method	Notes
		Limit							
Acenaphthene	ND	0.00500	mg/kg	1	BEL0154	12/08/21	12/13/21	EPA 8270D SIM	
Anthracene	ND	0.00500	"	"	"	"	"	"	
Benzo (a) anthracene	ND	0.00500	"	"	"	"	"	"	
Benzo (a) pyrene	ND	0.00500	"	"	"	"	"	"	
Benzo (b) fluoranthene	ND	0.00500	"	"	"	"	"	"	
Benzo (k) fluoranthene	ND	0.00500	"	"	"	"	"	"	
Chrysene	ND	0.00500	"	"	"	"	"	"	
Dibenz (a,h) anthracene	ND	0.00500	"	"	"	"	"	"	
Fluoranthene	ND	0.00500	"	"	"	"	"	"	
Fluorene	ND	0.00500	"	"	"	"	"	"	
Indeno (1,2,3-cd) pyrene	ND	0.00500	"	"	"	"	"	"	
Pyrene	ND	0.00500	"	"	"	"	"	"	
1-Methylnaphthalene	ND	0.00500	"	"	"	"	"	"	
2-Methylnaphthalene	ND	0.00500	"	"	"	"	"	"	

Date Sampled: **12/02/21 00:00**

Analyte	Result	Reporting	Units	Dilution	Batch	Prepared	Analyzed	Method	Notes
		Limit							
Surrogate: 2-Methylnaphthalene-d10		59.9 %	40-150		"	"	"	"	
Surrogate: Fluoranthene-d10		42.4 %	40-150		"	"	"	"	

Summit Scientific

The results in this report apply to the samples analyzed in accordance with the chain of custody document. This analytical report must be reproduced in its entirety.



GIS Peace  
2951 Niagara St  
Denver CO, 80207

Project: CO State #1 Pit Closure

Project Number: [none]  
Project Manager: Carter Peace

**Reported:**  
12/23/21 11:37

**EPSW**  
**2112084-08 (Soil)**

**Summit Scientific**

**Volatile Organic Compounds by EPA Method 8260B**

Date Sampled: **12/02/21 00:00**

Analyte	Result	Reporting	Units	Dilution	Batch	Prepared	Analyzed	Method	Notes
		Limit							
Benzene	ND	0.0020	mg/kg	1	BEL0140	12/07/21	12/08/21	EPA 8260B	
Toluene	ND	0.0050	"	"	"	"	"	"	
Ethylbenzene	ND	0.0050	"	"	"	"	"	"	
Xylenes (total)	ND	0.010	"	"	"	"	"	"	
1,2,4-Trimethylbenzene	ND	0.0050	"	"	"	"	"	"	
1,3,5-Trimethylbenzene	ND	0.0050	"	"	"	"	"	"	
Naphthalene	ND	0.0038	"	"	"	"	"	"	
Gasoline Range Hydrocarbons	ND	0.50	"	"	"	"	"	"	

Date Sampled: **12/02/21 00:00**

Analyte	Result	Reporting	Units	Dilution	Batch	Prepared	Analyzed	Method	Notes
		Limit							
Surrogate: 1,2-Dichloroethane-d4		121 %	23-173		"	"	"	"	
Surrogate: Toluene-d8		113 %	20-170		"	"	"	"	
Surrogate: 4-Bromofluorobenzene		109 %	21-167		"	"	"	"	

**Extractable Petroleum Hydrocarbons by 8015**

Date Sampled: **12/02/21 00:00**

Analyte	Result	Reporting	Units	Dilution	Batch	Prepared	Analyzed	Method	Notes
		Limit							
C10-C28 (DRO)	ND	50	mg/kg	1	BEL0141	12/07/21	12/08/21	EPA 8015M	
C28-C36 (ORO)	ND	50	"	"	"	"	"	"	

Date Sampled: **12/02/21 00:00**

Analyte	Result	Reporting	Units	Dilution	Batch	Prepared	Analyzed	Method	Notes
		Limit							
Surrogate: o-Terphenyl		95.9 %	30-150		"	"	"	"	

**PAH by EPA Method 8270D SIM**

Summit Scientific

The results in this report apply to the samples analyzed in accordance with the chain of custody document. This analytical report must be reproduced in its entirety.



GIS Peace  
2951 Niagara St  
Denver CO, 80207

Project: CO State #1 Pit Closure

Project Number: [none]  
Project Manager: Carter Peace

**Reported:**  
12/23/21 11:37

**EPSW**  
**2112084-08 (Soil)**

**Summit Scientific**

**PAH by EPA Method 8270D SIM**

Date Sampled: **12/02/21 00:00**

Analyte	Result	Reporting	Units	Dilution	Batch	Prepared	Analyzed	Method	Notes
		Limit							
Acenaphthene	ND	0.00500	mg/kg	1	BEL0154	12/08/21	12/13/21	EPA 8270D SIM	
Anthracene	ND	0.00500	"	"	"	"	"	"	
Benzo (a) anthracene	ND	0.00500	"	"	"	"	"	"	
Benzo (a) pyrene	ND	0.00500	"	"	"	"	"	"	
Benzo (b) fluoranthene	ND	0.00500	"	"	"	"	"	"	
Benzo (k) fluoranthene	ND	0.00500	"	"	"	"	"	"	
Chrysene	ND	0.00500	"	"	"	"	"	"	
Dibenz (a,h) anthracene	ND	0.00500	"	"	"	"	"	"	
Fluoranthene	ND	0.00500	"	"	"	"	"	"	
Fluorene	ND	0.00500	"	"	"	"	"	"	
Indeno (1,2,3-cd) pyrene	ND	0.00500	"	"	"	"	"	"	
Pyrene	ND	0.00500	"	"	"	"	"	"	
1-Methylnaphthalene	ND	0.00500	"	"	"	"	"	"	
2-Methylnaphthalene	ND	0.00500	"	"	"	"	"	"	

Date Sampled: **12/02/21 00:00**

Analyte	Result	Reporting	Units	Dilution	Batch	Prepared	Analyzed	Method	Notes
		Limit							
Surrogate: 2-Methylnaphthalene-d10		62.1 %	40-150		"	"	"	"	
Surrogate: Fluoranthene-d10		43.5 %	40-150		"	"	"	"	

Summit Scientific

The results in this report apply to the samples analyzed in accordance with the chain of custody document. This analytical report must be reproduced in its entirety.





GIS Peace  
2951 Niagara St  
Denver CO, 80207

Project: CO State #1 Pit Closure

Project Number: [none]  
Project Manager: Carter Peace

**Reported:**  
12/23/21 11:37

## Volatile Organic Compounds by EPA Method 8260B - Quality Control

### Summit Scientific

Analyte	Reporting			Spike	Source		%REC		RPD	
	Result	Limit	Units	Level	Result	%REC	Limits	RPD	Limit	Notes

#### Batch BEL0140 - EPA 5030 Soil MS

##### Blank (BEL0140-BLK1)

Prepared & Analyzed: 12/07/21

Benzene	ND	0.0020	mg/kg							
Toluene	ND	0.0050	"							
Ethylbenzene	ND	0.0050	"							
Xylenes (total)	ND	0.010	"							
1,2,4-Trimethylbenzene	ND	0.0050	"							
1,3,5-Trimethylbenzene	ND	0.0050	"							
Naphthalene	ND	0.0038	"							
Gasoline Range Hydrocarbons	ND	0.50	"							
Surrogate: 1,2-Dichloroethane-d4	0.0445		"	0.0400		111	23-173			
Surrogate: Toluene-d8	0.0429		"	0.0400		107	20-170			
Surrogate: 4-Bromofluorobenzene	0.0427		"	0.0400		107	21-167			

##### LCS (BEL0140-BS1)

Prepared: 12/07/21 Analyzed: 12/08/21

Benzene	0.0674	0.0020	mg/kg	0.0750		89.8	70-130			
Toluene	0.0758	0.0050	"	0.0750		101	70-130			
Ethylbenzene	0.0578	0.0050	"	0.0750		77.1	70-130			
m,p-Xylene	0.117	0.010	"	0.150		78.3	70-130			
o-Xylene	0.0631	0.0050	"	0.0750		84.2	70-130			
1,2,4-Trimethylbenzene	0.0619	0.0050	"	0.0750		82.6	70-130			
1,3,5-Trimethylbenzene	ND	0.0050	"	0.0750			70-130			
Naphthalene	0.0696	0.0038	"	0.0750		92.8	70-130			
Surrogate: 1,2-Dichloroethane-d4	0.0469		"	0.0400		117	23-173			
Surrogate: Toluene-d8	0.0438		"	0.0400		109	20-170			
Surrogate: 4-Bromofluorobenzene	0.0433		"	0.0400		108	21-167			

##### Matrix Spike (BEL0140-MS1)

Source: 2112067-01

Prepared: 12/07/21 Analyzed: 12/08/21

Benzene	0.0677	0.0020	mg/kg	0.0750	ND	90.2	70-130			
Toluene	0.0745	0.0050	"	0.0750	ND	99.3	70-130			
Ethylbenzene	0.0579	0.0050	"	0.0750	ND	77.2	70-130			
m,p-Xylene	0.118	0.010	"	0.150	ND	79.0	70-130			
o-Xylene	0.0632	0.0050	"	0.0750	ND	84.2	70-130			
1,2,4-Trimethylbenzene	0.0628	0.0050	"	0.0750	ND	83.7	70-130			
1,3,5-Trimethylbenzene	0.0639	0.0050	"	0.0750	ND	85.2	70-130			
Naphthalene	0.0741	0.0038	"	0.0750	ND	98.8	70-130			
Surrogate: 1,2-Dichloroethane-d4	0.0470		"	0.0400		117	23-173			
Surrogate: Toluene-d8	0.0434		"	0.0400		108	20-170			
Surrogate: 4-Bromofluorobenzene	0.0435		"	0.0400		109	21-167			

Summit Scientific

The results in this report apply to the samples analyzed in accordance with the chain of custody document. This analytical report must be reproduced in its entirety.



GIS Peace  
2951 Niagara St  
Denver CO, 80207

Project: CO State #1 Pit Closure

Project Number: [none]  
Project Manager: Carter Peace

**Reported:**  
12/23/21 11:37

**Volatile Organic Compounds by EPA Method 8260B - Quality Control**  
**Summit Scientific**

Analyte	Reporting			Spike	Source		%REC		RPD	
	Result	Limit	Units	Level	Result	%REC	Limits	RPD	Limit	Notes

**Batch BEL0140 - EPA 5030 Soil MS**

Matrix Spike Dup (BEL0140-MSD1)	Source: 2112067-01			Prepared: 12/07/21 Analyzed: 12/08/21						
Benzene	0.0646	0.0020	mg/kg	0.0750	ND	86.2	70-130	4.58	30	
Toluene	0.0764	0.0050	"	0.0750	ND	102	70-130	2.58	30	
Ethylbenzene	0.0624	0.0050	"	0.0750	ND	83.2	70-130	7.49	30	
m,p-Xylene	0.127	0.010	"	0.150	ND	84.8	70-130	7.18	30	
o-Xylene	0.0663	0.0050	"	0.0750	ND	88.4	70-130	4.86	30	
1,2,4-Trimethylbenzene	0.0664	0.0050	"	0.0750	ND	88.5	70-130	5.58	30	
1,3,5-Trimethylbenzene	0.0676	0.0050	"	0.0750	ND	90.2	70-130	5.66	30	
Naphthalene	0.0751	0.0038	"	0.0750	ND	100	70-130	1.33	30	
Surrogate: 1,2-Dichloroethane-d4	0.0442		"	0.0400		110	23-173			
Surrogate: Toluene-d8	0.0438		"	0.0400		110	20-170			
Surrogate: 4-Bromofluorobenzene	0.0410		"	0.0400		102	21-167			

Summit Scientific

*The results in this report apply to the samples analyzed in accordance with the chain of custody document. This analytical report must be reproduced in its entirety.*



GIS Peace  
2951 Niagara St  
Denver CO, 80207

Project: CO State #1 Pit Closure

Project Number: [none]  
Project Manager: Carter Peace

**Reported:**  
12/23/21 11:37

**Extractable Petroleum Hydrocarbons by 8015 - Quality Control**  
**Summit Scientific**

Analyte	Result	Reporting		Spike Level	Source		%REC		RPD	
		Limit	Units		Result	%REC	Limits	RPD	Limit	Notes

**Batch BEL0141 - EPA 3550A**

**Blank (BEL0141-BLK1)**

Prepared & Analyzed: 12/07/21

C10-C28 (DRO)	ND	50	mg/kg
C28-C36 (ORO)	ND	50	"

**LCS (BEL0141-BS1)**

Prepared & Analyzed: 12/07/21

C10-C28 (DRO)	402	50	mg/kg	400	101	70-130
---------------	-----	----	-------	-----	-----	--------

**Matrix Spike (BEL0141-MS1)**

Source: 2112067-01

Prepared: 12/07/21 Analyzed: 12/08/21

C10-C28 (DRO)	355	50	mg/kg	400	40.5	78.6	70-130
---------------	-----	----	-------	-----	------	------	--------

**Matrix Spike Dup (BEL0141-MSD1)**

Source: 2112067-01

Prepared: 12/07/21 Analyzed: 12/08/21

C10-C28 (DRO)	342	50	mg/kg	400	40.5	75.3	70-130	3.76	20
---------------	-----	----	-------	-----	------	------	--------	------	----

Summit Scientific

*The results in this report apply to the samples analyzed in accordance with the chain of custody document. This analytical report must be reproduced in its entirety.*





GIS Peace  
2951 Niagara St  
Denver CO, 80207

Project: CO State #1 Pit Closure

Project Number: [none]  
Project Manager: Carter Peace

**Reported:**  
12/23/21 11:37

## PAH by EPA Method 8270D SIM - Quality Control

### Summit Scientific

Reporting				Spike	Source	%REC			RPD	
Analyte	Result	Limit	Units	Level	Result	%REC	Limits	RPD	Limit	Notes

#### Batch BEL0154 - EPA 5030 Soil MS

##### Blank (BEL0154-BLK1)

Prepared: 12/08/21 Analyzed: 12/12/21

Acenaphthene	ND	0.00500	mg/kg							
Anthracene	ND	0.00500	"							
Benzo (a) anthracene	ND	0.00500	"							
Benzo (a) pyrene	ND	0.00500	"							
Benzo (b) fluoranthene	ND	0.00500	"							
Benzo (k) fluoranthene	ND	0.00500	"							
Chrysene	ND	0.00500	"							
Dibenz (a,h) anthracene	ND	0.00500	"							
Fluoranthene	ND	0.00500	"							
Fluorene	ND	0.00500	"							
Indeno (1,2,3-cd) pyrene	ND	0.00500	"							
Pyrene	ND	0.00500	"							
1-Methylnaphthalene	ND	0.00500	"							
2-Methylnaphthalene	ND	0.00500	"							
Surrogate: 2-Methylnaphthalene-d10	0.0316		"	0.0333		94.7	40-150			
Surrogate: Fluoranthene-d10	0.0272		"	0.0333		81.7	40-150			

##### LCS (BEL0154-BS1)

Prepared: 12/08/21 Analyzed: 12/12/21

Acenaphthene	0.0210	0.00500	mg/kg	0.0333	63.0	31-137
Anthracene	0.0225	0.00500	"	0.0333	67.5	30-120
Benzo (a) anthracene	0.0234	0.00500	"	0.0333	70.1	30-120
Benzo (a) pyrene	0.0243	0.00500	"	0.0333	72.9	30-120
Benzo (b) fluoranthene	0.0261	0.00500	"	0.0333	78.3	30-120
Benzo (k) fluoranthene	0.0262	0.00500	"	0.0333	78.7	30-120
Chrysene	0.0222	0.00500	"	0.0333	66.7	30-120
Dibenz (a,h) anthracene	0.0207	0.00500	"	0.0333	62.0	30-120
Fluoranthene	0.0213	0.00500	"	0.0333	63.8	30-120
Fluorene	0.0229	0.00500	"	0.0333	68.8	30-120
Indeno (1,2,3-cd) pyrene	0.0150	0.00500	"	0.0333	44.9	30-120
Pyrene	0.0270	0.00500	"	0.0333	81.0	35-142
1-Methylnaphthalene	0.0232	0.00500	"	0.0333	69.7	35-142
2-Methylnaphthalene	0.0216	0.00500	"	0.0333	64.9	35-142
Surrogate: 2-Methylnaphthalene-d10	0.0237		"	0.0333	71.0	40-150
Surrogate: Fluoranthene-d10	0.0238		"	0.0333	71.5	40-150

Summit Scientific

The results in this report apply to the samples analyzed in accordance with the chain of custody document. This analytical report must be reproduced in its entirety.



GIS Peace  
2951 Niagara St  
Denver CO, 80207

Project: CO State #1 Pit Closure

Project Number: [none]  
Project Manager: Carter Peace

**Reported:**  
12/23/21 11:37

## PAH by EPA Method 8270D SIM - Quality Control

### Summit Scientific

Reporting				Spike	Source	%REC			RPD	
Analyte	Result	Limit	Units	Level	Result	%REC	Limits	RPD	Limit	Notes

#### Batch BEL0154 - EPA 5030 Soil MS

##### Matrix Spike (BEL0154-MS1)

Source: 2112036-01

Prepared: 12/08/21 Analyzed: 12/12/21

Acenaphthene	0.0687	0.00500	mg/kg	0.0333	0.00939	178	31-137			QM-07
Anthracene	0.275	0.00500	"	0.0333	0.128	441	30-120			QM-07
Benzo (a) anthracene	0.305	0.00500	"	0.0333	0.116	568	30-120			QM-07
Benzo (a) pyrene	0.224	0.00500	"	0.0333	0.112	338	30-120			QM-07
Benzo (b) fluoranthene	0.400	0.00500	"	0.0333	0.238	486	30-120			QM-07
Benzo (k) fluoranthene	0.166	0.00500	"	0.0333	0.0903	227	30-120			QM-07
Chrysene	0.383	0.00500	"	0.0333	0.153	689	30-120			QM-07
Dibenz (a,h) anthracene	0.0306	0.00500	"	0.0333	ND	91.8	30-120			
Fluoranthene	0.545	0.00500	"	0.0333	0.237	923	30-120			QM-07
Fluorene	0.0723	0.00500	"	0.0333	0.00637	198	30-120			QM-07
Indeno (1,2,3-cd) pyrene	0.103	0.00500	"	0.0333	0.0431	180	30-120			QM-07
Pyrene	0.949	0.00500	"	0.0333	0.332	NR	35-142			QM-07
1-Methylnaphthalene	0.0316	0.00500	"	0.0333	ND	94.8	15-130			
2-Methylnaphthalene	0.0295	0.00500	"	0.0333	ND	88.6	15-130			
Surrogate: 2-Methylnaphthalene-d10	0.0237		"	0.0333		71.2	40-150			
Surrogate: Fluoranthene-d10	0.0241		"	0.0333		72.4	40-150			

##### Matrix Spike Dup (BEL0154-MSD1)

Source: 2112036-01

Prepared: 12/08/21 Analyzed: 12/12/21

Acenaphthene	0.0323	0.00500	mg/kg	0.0333	0.00939	68.6	31-137	72.2	30	QM-07
Anthracene	0.136	0.00500	"	0.0333	0.128	24.2	30-120	67.5	30	QM-07
Benzo (a) anthracene	0.110	0.00500	"	0.0333	0.116	NR	30-120	94.1	30	QM-07
Benzo (a) pyrene	0.102	0.00500	"	0.0333	0.112	NR	30-120	74.9	30	QM-07
Benzo (b) fluoranthene	0.193	0.00500	"	0.0333	0.238	NR	30-120	69.8	30	QM-07
Benzo (k) fluoranthene	0.0875	0.00500	"	0.0333	0.0903	NR	30-120	62.0	30	QM-07
Chrysene	0.134	0.00500	"	0.0333	0.153	NR	30-120	96.4	30	QM-07
Dibenz (a,h) anthracene	0.0175	0.00500	"	0.0333	ND	52.5	30-120	54.5	30	QM-07
Fluoranthene	0.200	0.00500	"	0.0333	0.237	NR	30-120	92.5	30	QM-07
Fluorene	0.0318	0.00500	"	0.0333	0.00637	76.4	30-120	77.7	30	QM-07
Indeno (1,2,3-cd) pyrene	0.0484	0.00500	"	0.0333	0.0431	15.8	30-120	72.3	30	QM-07
Pyrene	0.274	0.00500	"	0.0333	0.332	NR	35-142	110	30	QM-07
1-Methylnaphthalene	0.0256	0.00500	"	0.0333	ND	76.7	15-130	21.1	50	
2-Methylnaphthalene	0.0239	0.00500	"	0.0333	ND	71.8	15-130	21.0	50	
Surrogate: 2-Methylnaphthalene-d10	0.0217		"	0.0333		65.1	40-150			
Surrogate: Fluoranthene-d10	0.0194		"	0.0333		58.1	40-150			

Summit Scientific

The results in this report apply to the samples analyzed in accordance with the chain of custody document. This analytical report must be reproduced in its entirety.



GIS Peace  
2951 Niagara St  
Denver CO, 80207

Project: CO State #1 Pit Closure

Project Number: [none]  
Project Manager: Carter Peace

**Reported:**  
12/23/21 11:37

### Notes and Definitions

QM-07	The spike recovery was outside acceptance limits for the MS and/or MSD. The batch was accepted based on acceptable LCS/LCSD recovery.
DET	Analyte DETECTED
ND	Analyte NOT DETECTED at or above the reporting limit
NR	Not Reported
dry	Sample results reported on a dry weight basis
RPD	Relative Percent Difference



# Summit Scientific

---

4653 Table Mountain Drive, Golden, Colorado 80403

303.277.9310

April 27, 2022

Carter Peace

GIS Peace

2951 Niagara St

Denver, CO 80207

RE: Colorado State Location Closure

Work Order #2204282

Enclosed are the results of analyses for samples received by Summit Scientific on 04/19/22 14:45. If you have any questions concerning this report, please feel free to contact me.

Sincerely,

A handwritten signature in black ink, appearing to read 'P. Shrewsbury', written in a cursive style.

Paul Shrewsbury

President



GIS Peace  
2951 Niagara St  
Denver CO, 80207

Project: Colorado State Location Closure

Project Number: [none]  
Project Manager: Carter Peace

**Reported:**  
04/27/22 12:04

#### ANALYTICAL REPORT FOR SAMPLES

Sample ID	Laboratory ID	Matrix	Date Sampled	Date Received
WPB	2204282-01	Soil	04/19/22 00:00	04/19/22 14:45
EPBN	2204282-02	Soil	04/19/22 00:00	04/19/22 14:45
EPBS	2204282-03	Soil	04/19/22 00:00	04/19/22 14:45
TB	2204282-04	Soil	04/19/22 00:00	04/19/22 14:45
ST	2204282-05	Soil	04/19/22 00:00	04/19/22 14:45
HT	2204282-06	Soil	04/19/22 00:00	04/19/22 14:45
WPNW	2204282-07	Soil	04/19/22 00:00	04/19/22 14:45

Summit Scientific

*The results in this report apply to the samples analyzed in accordance with the chain of custody document. This analytical report must be reproduced in its entirety.*

# Summit Scientific

2204282

4653 Table Mountain Drive ♦ Golden, Colorado 80403  
303-277-9310

Client:

GIS PEACE

Project Manager:

C. PEACE

Page

of

Address:

E-Mail:

City/State/Zip:

Phone:

Project Name:

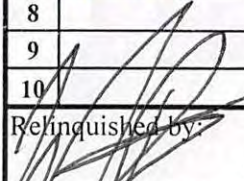
COLORADO STATE LOCATION CLOSURE

Sampler Name:

CJP

Project Number:

ID	Sample Description	Date Sampled	Time Sampled	# of containers	Preservative				Matrix				Analysis Requested								Special Instructions
					HCl	HNO3	None	Other	Water	Soil	Air-Canister #	Other	GNBTEX	DRG 8015	915 ORGANICS	ORO					
1	WPB						X			X				X	X	X	X				
2	EPBN						X			X				X	X	X	X				
3	EPBS						X			X				X	X	X	X				
4	TB						X			X				X	X	X	X				
5	ST						X			X				X	X	X	X				
6	HT						X			X				X	X	X	X				
7	WPNW						X			X				X	X	X	X				
8																					
9																					
10																					

Relinquished by: 	Date/Time: 4/19/22 2:45	Received by: Sherryl Bantz	Date/Time: 4/19/22 4:45	Turn Around Time (Check)	Notes:
Relinquished by:	Date/Time:	Received by:	Date/Time:	Same Day	72 hours
				24 hours	Standard
				48 hours	
Temperature Upon Receipt: 8.6	Corrected Temperature	HNO3 lot #	Sample Integrity: CP	Samples Intact: Yes	No
IR gun correction:	IR gun #:				



S<sub>2</sub>

## Sample Receipt Checklist

S2 Work Order# 2204282Client: G18 Peace Client Project ID: Colorado State

Shipped Via: H.D./P.U./FedEx/UPS/USPS/Other \_\_\_\_\_ Airbill #: \_\_\_\_\_

✓				
---	--	--	--	--

Matrix (Check all that apply) Air ☐ Soil/Solid ☒ Water ☐ Other ☐Temp (°C) 8.6 Thermometer # 2

	Yes	No	N/A	Comments (if any)
If samples require cooling, is the temperature < 6 °C <sup>(1)</sup> ? <b>NOTE:</b> If samples are delivered the same day of sampling, this requirement is met if there is evidence that cooling has begun.	✓			ice
Were all samples received intact <sup>(1)</sup> ?	✓			
Was adequate sample volume provided <sup>(1)</sup> ?	✓			
If custody seals are present, are they intact <sup>(1)</sup> ?			✓	
Are samples due within 48 hours present?	✓			24 hour
Are water samples with short hold times present? Note the short hold analysis in the comments column - pH, Nitrate/Nitrite, Ferrous Iron (Fe <sup>2+</sup> ), Hexavalent Chromium (Cr <sup>6+</sup> , Cr VI), COD/BOD, Total Coliform, E. Coli, Total Residual Chlorine (TRC), Dissolved Oxygen			✓	
Is a chain-of-custody (COC) form present and filled out completely <sup>(1)</sup> ?	✓			
Does the COC agree with the number and type of sample bottles received <sup>(1)</sup> ?	✓			
Do the sample IDs on the bottle labels match the COC <sup>(1)</sup> ?	✓			
Is the COC properly relinquished by the client w/ date and time recorded <sup>(1)</sup> ?	✓			
For volatiles in water – is there headspace present? <b>If yes, contact client and note in narrative.</b>			✓	
Are samples preserved that require preservation (excluding cooling) <sup>(1)</sup> ? Note the type of preservative in the comments column – HCl, H <sub>2</sub> SO <sub>4</sub> , NaOH, HNO <sub>3</sub> , etc.			✓	
If samples are acid preserved for metals, is the pH ≤ 2 <sup>(1)</sup> ? Record the pH in Comments.			✓	
If dissolved metals are requested, were samples field filtered?			✓	
Additional Comments (if any):				
<sup>(1)</sup> If NO, then contact the client before proceeding with analysis and note in case narrative.				

SB  
Custodian Printed Name

4/19/22 14:45  
Date/Time



GIS Peace  
2951 Niagara St  
Denver CO, 80207

Project: Colorado State Location Closure

Project Number: [none]  
Project Manager: Carter Peace

**Reported:**  
04/27/22 12:04

**WPB**  
**2204282-01 (Soil)**

**Summit Scientific**

**Volatile Organic Compounds by EPA Method 8260B**

Date Sampled: **04/19/22 00:00**

Analyte	Result	Reporting Limit	Units	Dilution	Batch	Prepared	Analyzed	Method	Notes
Benzene	ND	0.0020	mg/kg	1	BFD0397	04/19/22	04/19/22	EPA 8260B	
Toluene	ND	0.0050	"	"	"	"	"	"	
Ethylbenzene	ND	0.0050	"	"	"	"	"	"	
Xylenes (total)	ND	0.010	"	"	"	"	"	"	
1,2,4-Trimethylbenzene	ND	0.0050	"	"	"	"	"	"	
1,3,5-Trimethylbenzene	ND	0.0050	"	"	"	"	"	"	
Naphthalene	ND	0.0038	"	"	"	"	"	"	
<b>Gasoline Range Hydrocarbons</b>	<b>1100</b>	50	"	100	"	"	"	"	

Date Sampled: **04/19/22 00:00**

Analyte	Result	Reporting Limit	Units	Dilution	Batch	Prepared	Analyzed	Method	Notes
Surrogate: 1,2-Dichloroethane-d4		122 %	50-150		"	"	"	"	
Surrogate: Toluene-d8		102 %	50-150		"	"	"	"	
Surrogate: 4-Bromofluorobenzene		196 %	50-150		"	"	"	"	S-02

**Extractable Petroleum Hydrocarbons by 8015**

Date Sampled: **04/19/22 00:00**

Analyte	Result	Reporting Limit	Units	Dilution	Batch	Prepared	Analyzed	Method	Notes
<b>C10-C28 (DRO)</b>	<b>1500</b>	50	mg/kg	1	BFD0398	04/19/22	04/19/22	EPA 8015M	
<b>C28-C36 (ORO)</b>	<b>290</b>	50	"	"	"	"	"	"	

Date Sampled: **04/19/22 00:00**

Analyte	Result	Reporting Limit	Units	Dilution	Batch	Prepared	Analyzed	Method	Notes
Surrogate: o-Terphenyl		106 %	30-150		"	"	"	"	

**PAH by EPA Method 8270D SIM**

Summit Scientific

The results in this report apply to the samples analyzed in accordance with the chain of custody document. This analytical report must be reproduced in its entirety.



GIS Peace  
2951 Niagara St  
Denver CO, 80207

Project: Colorado State Location Closure

Project Number: [none]  
Project Manager: Carter Peace

**Reported:**  
04/27/22 12:04

**WPB**  
**2204282-01 (Soil)**

**Summit Scientific**

**PAH by EPA Method 8270D SIM**

Date Sampled: **04/19/22 00:00**

Analyte	Result	Reporting Limit	Units	Dilution	Batch	Prepared	Analyzed	Method	Notes
Acenaphthene	ND	0.00500	mg/kg	1	BFD0400	04/20/22	04/22/22	EPA 8270D SIM	
Anthracene	ND	0.00500	"	"	"	"	"	"	
Benzo (a) anthracene	ND	0.00500	"	"	"	"	"	"	
Benzo (a) pyrene	ND	0.00500	"	"	"	"	"	"	
<b>Benzo (b) fluoranthene</b>	<b>0.0677</b>	0.00500	"	"	"	"	"	"	
Benzo (k) fluoranthene	ND	0.00500	"	"	"	"	"	"	
<b>Chrysene</b>	<b>0.136</b>	0.00500	"	"	"	"	"	"	
Dibenz (a,h) anthracene	ND	0.00500	"	"	"	"	"	"	
Fluoranthene	ND	0.00500	"	"	"	"	"	"	
Fluorene	ND	0.00500	"	"	"	"	"	"	
Indeno (1,2,3-cd) pyrene	ND	0.00500	"	"	"	"	"	"	
<b>Pyrene</b>	<b>0.146</b>	0.00500	"	"	"	"	"	"	
1-Methylnaphthalene	ND	0.00500	"	"	"	"	"	"	
2-Methylnaphthalene	ND	0.00500	"	"	"	"	"	"	

Date Sampled: **04/19/22 00:00**

Analyte	Result	Reporting Limit	Units	Dilution	Batch	Prepared	Analyzed	Method	Notes
Surrogate: 2-Methylnaphthalene-d10	69.2 %	40-150			"	"	"	"	
Surrogate: Fluoranthene-d10	9.70 %	40-150			"	"	"	"	S-02

Summit Scientific

The results in this report apply to the samples analyzed in accordance with the chain of custody document. This analytical report must be reproduced in its entirety.





GIS Peace  
2951 Niagara St  
Denver CO, 80207

Project: Colorado State Location Closure

Project Number: [none]  
Project Manager: Carter Peace

**Reported:**  
04/27/22 12:04

**EPBN**  
**2204282-02 (Soil)**

**Summit Scientific**

**Volatile Organic Compounds by EPA Method 8260B**

Date Sampled: **04/19/22 00:00**

Analyte	Result	Reporting Limit	Units	Dilution	Batch	Prepared	Analyzed	Method	Notes
Benzene	ND	0.0020	mg/kg	1	BFD0397	04/19/22	04/19/22	EPA 8260B	
Toluene	ND	0.0050	"	"	"	"	"	"	
Ethylbenzene	ND	0.0050	"	"	"	"	"	"	
Xylenes (total)	ND	0.010	"	"	"	"	"	"	
1,2,4-Trimethylbenzene	ND	0.0050	"	"	"	"	"	"	
1,3,5-Trimethylbenzene	ND	0.0050	"	"	"	"	"	"	
Naphthalene	ND	0.0038	"	"	"	"	"	"	
<b>Gasoline Range Hydrocarbons</b>	<b>1.9</b>	<b>0.50</b>	"	"	"	"	"	"	

Date Sampled: **04/19/22 00:00**

Analyte	Result	Reporting Limit	Units	Dilution	Batch	Prepared	Analyzed	Method	Notes
Surrogate: 1,2-Dichloroethane-d4		120 %	50-150		"	"	"	"	
Surrogate: Toluene-d8		98.9 %	50-150		"	"	"	"	
Surrogate: 4-Bromofluorobenzene		144 %	50-150		"	"	"	"	

**Extractable Petroleum Hydrocarbons by 8015**

Date Sampled: **04/19/22 00:00**

Analyte	Result	Reporting Limit	Units	Dilution	Batch	Prepared	Analyzed	Method	Notes
C10-C28 (DRO)	ND	50	mg/kg	1	BFD0398	04/19/22	04/19/22	EPA 8015M	
C28-C36 (ORO)	ND	50	"	"	"	"	"	"	

Date Sampled: **04/19/22 00:00**

Analyte	Result	Reporting Limit	Units	Dilution	Batch	Prepared	Analyzed	Method	Notes
Surrogate: o-Terphenyl		102 %	30-150		"	"	"	"	

**PAH by EPA Method 8270D SIM**

Summit Scientific

The results in this report apply to the samples analyzed in accordance with the chain of custody document. This analytical report must be reproduced in its entirety.



GIS Peace  
2951 Niagara St  
Denver CO, 80207

Project: Colorado State Location Closure

Project Number: [none]  
Project Manager: Carter Peace

**Reported:**  
04/27/22 12:04

**EPBN**  
**2204282-02 (Soil)**

**Summit Scientific**

**PAH by EPA Method 8270D SIM**

Date Sampled: **04/19/22 00:00**

Analyte	Result	Reporting	Units	Dilution	Batch	Prepared	Analyzed	Method	Notes
		Limit							
Acenaphthene	ND	0.00500	mg/kg	1	BFD0400	04/20/22	04/22/22	EPA 8270D SIM	
Anthracene	ND	0.00500	"	"	"	"	"	"	
Benzo (a) anthracene	ND	0.00500	"	"	"	"	"	"	
Benzo (a) pyrene	ND	0.00500	"	"	"	"	"	"	
Benzo (b) fluoranthene	ND	0.00500	"	"	"	"	"	"	
Benzo (k) fluoranthene	ND	0.00500	"	"	"	"	"	"	
<b>Chrysene</b>	<b>0.0355</b>	0.00500	"	"	"	"	"	"	
Dibenz (a,h) anthracene	ND	0.00500	"	"	"	"	"	"	
Fluoranthene	ND	0.00500	"	"	"	"	"	"	
Fluorene	ND	0.00500	"	"	"	"	"	"	
Indeno (1,2,3-cd) pyrene	ND	0.00500	"	"	"	"	"	"	
Pyrene	ND	0.00500	"	"	"	"	"	"	
1-Methylnaphthalene	ND	0.00500	"	"	"	"	"	"	
2-Methylnaphthalene	ND	0.00500	"	"	"	"	"	"	

Date Sampled: **04/19/22 00:00**

Analyte	Result	Reporting	Units	Dilution	Batch	Prepared	Analyzed	Method	Notes
		Limit							
Surrogate: 2-Methylnaphthalene-d10		65.4 %	40-150		"	"	"	"	
Surrogate: Fluoranthene-d10		47.7 %	40-150		"	"	"	"	

Summit Scientific

The results in this report apply to the samples analyzed in accordance with the chain of custody document. This analytical report must be reproduced in its entirety.



GIS Peace  
2951 Niagara St  
Denver CO, 80207

Project: Colorado State Location Closure

Project Number: [none]  
Project Manager: Carter Peace

**Reported:**  
04/27/22 12:04

**EPBS**  
**2204282-03 (Soil)**

**Summit Scientific**

**Volatile Organic Compounds by EPA Method 8260B**

Date Sampled: **04/19/22 00:00**

Analyte	Result	Reporting Limit	Units	Dilution	Batch	Prepared	Analyzed	Method	Notes
Benzene	ND	0.0020	mg/kg	1	BFD0397	04/19/22	04/19/22	EPA 8260B	
Toluene	ND	0.0050	"	"	"	"	"	"	
Ethylbenzene	ND	0.0050	"	"	"	"	"	"	
Xylenes (total)	ND	0.010	"	"	"	"	"	"	
1,2,4-Trimethylbenzene	ND	0.0050	"	"	"	"	"	"	
1,3,5-Trimethylbenzene	ND	0.0050	"	"	"	"	"	"	
Naphthalene	ND	0.0038	"	"	"	"	"	"	
<b>Gasoline Range Hydrocarbons</b>	<b>0.86</b>	0.50	"	"	"	"	"	"	

Date Sampled: **04/19/22 00:00**

Analyte	Result	Reporting Limit	Units	Dilution	Batch	Prepared	Analyzed	Method	Notes
Surrogate: 1,2-Dichloroethane-d4		125 %	50-150		"	"	"	"	
Surrogate: Toluene-d8		104 %	50-150		"	"	"	"	
Surrogate: 4-Bromofluorobenzene		123 %	50-150		"	"	"	"	

**Extractable Petroleum Hydrocarbons by 8015**

Date Sampled: **04/19/22 00:00**

Analyte	Result	Reporting Limit	Units	Dilution	Batch	Prepared	Analyzed	Method	Notes
C10-C28 (DRO)	ND	50	mg/kg	1	BFD0398	04/19/22	04/19/22	EPA 8015M	
C28-C36 (ORO)	ND	50	"	"	"	"	"	"	

Date Sampled: **04/19/22 00:00**

Analyte	Result	Reporting Limit	Units	Dilution	Batch	Prepared	Analyzed	Method	Notes
Surrogate: o-Terphenyl		80.0 %	30-150		"	"	"	"	

**PAH by EPA Method 8270D SIM**

Summit Scientific

The results in this report apply to the samples analyzed in accordance with the chain of custody document. This analytical report must be reproduced in its entirety.





GIS Peace  
2951 Niagara St  
Denver CO, 80207

Project: Colorado State Location Closure

Project Number: [none]  
Project Manager: Carter Peace

**Reported:**  
04/27/22 12:04

**EPBS**  
**2204282-03 (Soil)**

**Summit Scientific**

**PAH by EPA Method 8270D SIM**

Date Sampled: **04/19/22 00:00**

Analyte	Result	Reporting	Units	Dilution	Batch	Prepared	Analyzed	Method	Notes
		Limit							
Acenaphthene	ND	0.00500	mg/kg	1	BFD0400	04/20/22	04/22/22	EPA 8270D SIM	
Anthracene	ND	0.00500	"	"	"	"	"	"	
Benzo (a) anthracene	ND	0.00500	"	"	"	"	"	"	
Benzo (a) pyrene	ND	0.00500	"	"	"	"	"	"	
Benzo (b) fluoranthene	ND	0.00500	"	"	"	"	"	"	
Benzo (k) fluoranthene	ND	0.00500	"	"	"	"	"	"	
<b>Chrysene</b>	<b>0.00510</b>	0.00500	"	"	"	"	"	"	
Dibenz (a,h) anthracene	ND	0.00500	"	"	"	"	"	"	
Fluoranthene	ND	0.00500	"	"	"	"	"	"	
Fluorene	ND	0.00500	"	"	"	"	"	"	
Indeno (1,2,3-cd) pyrene	ND	0.00500	"	"	"	"	"	"	
Pyrene	ND	0.00500	"	"	"	"	"	"	
1-Methylnaphthalene	ND	0.00500	"	"	"	"	"	"	
2-Methylnaphthalene	ND	0.00500	"	"	"	"	"	"	

Date Sampled: **04/19/22 00:00**

Analyte	Result	Reporting	Units	Dilution	Batch	Prepared	Analyzed	Method	Notes
		Limit							
Surrogate: 2-Methylnaphthalene-d10		54.5 %	40-150		"	"	"	"	
Surrogate: Fluoranthene-d10		47.3 %	40-150		"	"	"	"	

Summit Scientific

The results in this report apply to the samples analyzed in accordance with the chain of custody document. This analytical report must be reproduced in its entirety.



GIS Peace  
2951 Niagara St  
Denver CO, 80207

Project: Colorado State Location Closure

Project Number: [none]  
Project Manager: Carter Peace

**Reported:**  
04/27/22 12:04

**TB**  
**2204282-04 (Soil)**

**Summit Scientific**

**Volatile Organic Compounds by EPA Method 8260B**

Date Sampled: **04/19/22 00:00**

Analyte	Result	Reporting	Units	Dilution	Batch	Prepared	Analyzed	Method	Notes
		Limit							
Benzene	ND	0.0020	mg/kg	1	BFD0397	04/19/22	04/19/22	EPA 8260B	
Toluene	ND	0.0050	"	"	"	"	"	"	
Ethylbenzene	ND	0.0050	"	"	"	"	"	"	
Xylenes (total)	ND	0.010	"	"	"	"	"	"	
1,2,4-Trimethylbenzene	ND	0.0050	"	"	"	"	"	"	
1,3,5-Trimethylbenzene	ND	0.0050	"	"	"	"	"	"	
Naphthalene	ND	0.0038	"	"	"	"	"	"	
Gasoline Range Hydrocarbons	ND	0.50	"	"	"	"	"	"	

Date Sampled: **04/19/22 00:00**

Analyte	Result	Reporting	Units	Dilution	Batch	Prepared	Analyzed	Method	Notes
		Limit							
Surrogate: 1,2-Dichloroethane-d4		115 %	50-150		"	"	"	"	
Surrogate: Toluene-d8		104 %	50-150		"	"	"	"	
Surrogate: 4-Bromofluorobenzene		112 %	50-150		"	"	"	"	

**Extractable Petroleum Hydrocarbons by 8015**

Date Sampled: **04/19/22 00:00**

Analyte	Result	Reporting	Units	Dilution	Batch	Prepared	Analyzed	Method	Notes
		Limit							
C10-C28 (DRO)	ND	50	mg/kg	1	BFD0398	04/19/22	04/19/22	EPA 8015M	
C28-C36 (ORO)	ND	50	"	"	"	"	"	"	

Date Sampled: **04/19/22 00:00**

Analyte	Result	Reporting	Units	Dilution	Batch	Prepared	Analyzed	Method	Notes
		Limit							
Surrogate: o-Terphenyl		92.7 %	30-150		"	"	"	"	

**PAH by EPA Method 8270D SIM**

Summit Scientific

The results in this report apply to the samples analyzed in accordance with the chain of custody document. This analytical report must be reproduced in its entirety.



GIS Peace  
2951 Niagara St  
Denver CO, 80207

Project: Colorado State Location Closure

Project Number: [none]  
Project Manager: Carter Peace

**Reported:**  
04/27/22 12:04

**TB**  
**2204282-04 (Soil)**

**Summit Scientific**

**PAH by EPA Method 8270D SIM**

Date Sampled: **04/19/22 00:00**

Analyte	Result	Reporting	Units	Dilution	Batch	Prepared	Analyzed	Method	Notes
		Limit							
Acenaphthene	ND	0.00500	mg/kg	1	BFD0400	04/20/22	04/22/22	EPA 8270D SIM	
Anthracene	ND	0.00500	"	"	"	"	"	"	
Benzo (a) anthracene	ND	0.00500	"	"	"	"	"	"	
Benzo (a) pyrene	ND	0.00500	"	"	"	"	"	"	
Benzo (b) fluoranthene	ND	0.00500	"	"	"	"	"	"	
Benzo (k) fluoranthene	ND	0.00500	"	"	"	"	"	"	
Chrysene	ND	0.00500	"	"	"	"	"	"	
Dibenz (a,h) anthracene	ND	0.00500	"	"	"	"	"	"	
Fluoranthene	ND	0.00500	"	"	"	"	"	"	
Fluorene	ND	0.00500	"	"	"	"	"	"	
Indeno (1,2,3-cd) pyrene	ND	0.00500	"	"	"	"	"	"	
Pyrene	ND	0.00500	"	"	"	"	"	"	
1-Methylnaphthalene	ND	0.00500	"	"	"	"	"	"	
2-Methylnaphthalene	ND	0.00500	"	"	"	"	"	"	

Date Sampled: **04/19/22 00:00**

Analyte	Result	Reporting	Units	Dilution	Batch	Prepared	Analyzed	Method	Notes
		Limit							
Surrogate: 2-Methylnaphthalene-d10		54.5 %	40-150		"	"	"	"	
Surrogate: Fluoranthene-d10		44.9 %	40-150		"	"	"	"	

Summit Scientific

The results in this report apply to the samples analyzed in accordance with the chain of custody document. This analytical report must be reproduced in its entirety.



GIS Peace  
2951 Niagara St  
Denver CO, 80207

Project: Colorado State Location Closure

Project Number: [none]  
Project Manager: Carter Peace

**Reported:**  
04/27/22 12:04

**ST**  
**2204282-05 (Soil)**

**Summit Scientific**

**Volatile Organic Compounds by EPA Method 8260B**

Date Sampled: **04/19/22 00:00**

Analyte	Result	Reporting	Units	Dilution	Batch	Prepared	Analyzed	Method	Notes
		Limit							
Benzene	ND	0.0020	mg/kg	1	BFD0397	04/19/22	04/19/22	EPA 8260B	
Toluene	ND	0.0050	"	"	"	"	"	"	
Ethylbenzene	ND	0.0050	"	"	"	"	"	"	
Xylenes (total)	ND	0.010	"	"	"	"	"	"	
1,2,4-Trimethylbenzene	ND	0.0050	"	"	"	"	"	"	
1,3,5-Trimethylbenzene	ND	0.0050	"	"	"	"	"	"	
Naphthalene	ND	0.0038	"	"	"	"	"	"	
Gasoline Range Hydrocarbons	ND	0.50	"	"	"	"	"	"	

Date Sampled: **04/19/22 00:00**

Analyte	Result	Reporting	Units	Dilution	Batch	Prepared	Analyzed	Method	Notes
		Limit							
Surrogate: 1,2-Dichloroethane-d4		115 %	50-150		"	"	"	"	
Surrogate: Toluene-d8		102 %	50-150		"	"	"	"	
Surrogate: 4-Bromofluorobenzene		99.3 %	50-150		"	"	"	"	

**Extractable Petroleum Hydrocarbons by 8015**

Date Sampled: **04/19/22 00:00**

Analyte	Result	Reporting	Units	Dilution	Batch	Prepared	Analyzed	Method	Notes
		Limit							
C10-C28 (DRO)	ND	50	mg/kg	1	BFD0398	04/19/22	04/19/22	EPA 8015M	
C28-C36 (ORO)	ND	50	"	"	"	"	"	"	

Date Sampled: **04/19/22 00:00**

Analyte	Result	Reporting	Units	Dilution	Batch	Prepared	Analyzed	Method	Notes
		Limit							
Surrogate: o-Terphenyl		87.4 %	30-150		"	"	"	"	

**PAH by EPA Method 8270D SIM**

**R-01**

Summit Scientific

The results in this report apply to the samples analyzed in accordance with the chain of custody document. This analytical report must be reproduced in its entirety.





GIS Peace  
2951 Niagara St  
Denver CO, 80207

Project: Colorado State Location Closure

Project Number: [none]  
Project Manager: Carter Peace

**Reported:**  
04/27/22 12:04

**ST**  
**2204282-05 (Soil)**

**Summit Scientific**

**PAH by EPA Method 8270D SIM**

**R-01**

Date Sampled: **04/19/22 00:00**

Analyte	Result	Reporting	Units	Dilution	Batch	Prepared	Analyzed	Method	Notes
		Limit							
Acenaphthene	ND	0.0500	mg/kg	10	BFD0400	04/20/22	04/23/22	EPA 8270D SIM	
Anthracene	ND	0.0500	"	"	"	"	"	"	
Benzo (a) anthracene	ND	0.0500	"	"	"	"	"	"	
Benzo (a) pyrene	ND	0.0500	"	"	"	"	"	"	
Benzo (b) fluoranthene	ND	0.0500	"	"	"	"	"	"	
Benzo (k) fluoranthene	ND	0.0500	"	"	"	"	"	"	
Chrysene	ND	0.0500	"	"	"	"	"	"	
Dibenz (a,h) anthracene	ND	0.0500	"	"	"	"	"	"	
Fluoranthene	ND	0.0500	"	"	"	"	"	"	
Fluorene	ND	0.0500	"	"	"	"	"	"	
Indeno (1,2,3-cd) pyrene	ND	0.0500	"	"	"	"	"	"	
Pyrene	ND	0.0500	"	"	"	"	"	"	
1-Methylnaphthalene	ND	0.0500	"	"	"	"	"	"	
2-Methylnaphthalene	ND	0.0500	"	"	"	"	"	"	

Date Sampled: **04/19/22 00:00**

Analyte	Result	Reporting	Units	Dilution	Batch	Prepared	Analyzed	Method	Notes
		Limit							
Surrogate: 2-Methylnaphthalene-d10		47.2 %	40-150		"	"	"	"	
Surrogate: Fluoranthene-d10		53.6 %	40-150		"	"	"	"	

Summit Scientific

The results in this report apply to the samples analyzed in accordance with the chain of custody document. This analytical report must be reproduced in its entirety.



GIS Peace  
2951 Niagara St  
Denver CO, 80207

Project: Colorado State Location Closure

Project Number: [none]  
Project Manager: Carter Peace

**Reported:**  
04/27/22 12:04

**HT**  
**2204282-06 (Soil)**

**Summit Scientific**

**Volatile Organic Compounds by EPA Method 8260B**

Date Sampled: **04/19/22 00:00**

Analyte	Result	Reporting	Units	Dilution	Batch	Prepared	Analyzed	Method	Notes
		Limit							
Benzene	ND	0.0020	mg/kg	1	BFD0397	04/19/22	04/19/22	EPA 8260B	
Toluene	ND	0.0050	"	"	"	"	"	"	
Ethylbenzene	ND	0.0050	"	"	"	"	"	"	
Xylenes (total)	ND	0.010	"	"	"	"	"	"	
1,2,4-Trimethylbenzene	ND	0.0050	"	"	"	"	"	"	
1,3,5-Trimethylbenzene	ND	0.0050	"	"	"	"	"	"	
Naphthalene	ND	0.0038	"	"	"	"	"	"	
Gasoline Range Hydrocarbons	ND	0.50	"	"	"	"	"	"	

Date Sampled: **04/19/22 00:00**

Analyte	Result	Reporting	Units	Dilution	Batch	Prepared	Analyzed	Method	Notes
		Limit							
Surrogate: 1,2-Dichloroethane-d4		118 %	50-150		"	"	"	"	
Surrogate: Toluene-d8		103 %	50-150		"	"	"	"	
Surrogate: 4-Bromofluorobenzene		99.9 %	50-150		"	"	"	"	

**Extractable Petroleum Hydrocarbons by 8015**

Date Sampled: **04/19/22 00:00**

Analyte	Result	Reporting	Units	Dilution	Batch	Prepared	Analyzed	Method	Notes
		Limit							
C10-C28 (DRO)	ND	50	mg/kg	1	BFD0398	04/19/22	04/19/22	EPA 8015M	
C28-C36 (ORO)	ND	50	"	"	"	"	"	"	

Date Sampled: **04/19/22 00:00**

Analyte	Result	Reporting	Units	Dilution	Batch	Prepared	Analyzed	Method	Notes
		Limit							
Surrogate: o-Terphenyl		90.9 %	30-150		"	"	"	"	

**PAH by EPA Method 8270D SIM**

Summit Scientific

The results in this report apply to the samples analyzed in accordance with the chain of custody document. This analytical report must be reproduced in its entirety.



GIS Peace  
2951 Niagara St  
Denver CO, 80207

Project: Colorado State Location Closure

Project Number: [none]  
Project Manager: Carter Peace

**Reported:**  
04/27/22 12:04

**HT**  
**2204282-06 (Soil)**

**Summit Scientific**

**PAH by EPA Method 8270D SIM**

Date Sampled: **04/19/22 00:00**

Analyte	Result	Reporting	Units	Dilution	Batch	Prepared	Analyzed	Method	Notes
		Limit							
Acenaphthene	ND	0.00500	mg/kg	1	BFD0400	04/20/22	04/22/22	EPA 8270D SIM	
Anthracene	ND	0.00500	"	"	"	"	"	"	
Benzo (a) anthracene	ND	0.00500	"	"	"	"	"	"	
Benzo (a) pyrene	ND	0.00500	"	"	"	"	"	"	
Benzo (b) fluoranthene	ND	0.00500	"	"	"	"	"	"	
Benzo (k) fluoranthene	ND	0.00500	"	"	"	"	"	"	
Chrysene	ND	0.00500	"	"	"	"	"	"	
Dibenz (a,h) anthracene	ND	0.00500	"	"	"	"	"	"	
Fluoranthene	ND	0.00500	"	"	"	"	"	"	
Fluorene	ND	0.00500	"	"	"	"	"	"	
Indeno (1,2,3-cd) pyrene	ND	0.00500	"	"	"	"	"	"	
Pyrene	ND	0.00500	"	"	"	"	"	"	
1-Methylnaphthalene	ND	0.00500	"	"	"	"	"	"	
2-Methylnaphthalene	ND	0.00500	"	"	"	"	"	"	

Date Sampled: **04/19/22 00:00**

Analyte	Result	Reporting	Units	Dilution	Batch	Prepared	Analyzed	Method	Notes
		Limit							
Surrogate: 2-Methylnaphthalene-d10		60.7 %	40-150		"	"	"	"	
Surrogate: Fluoranthene-d10		42.3 %	40-150		"	"	"	"	

Summit Scientific

The results in this report apply to the samples analyzed in accordance with the chain of custody document. This analytical report must be reproduced in its entirety.



GIS Peace  
2951 Niagara St  
Denver CO, 80207

Project: Colorado State Location Closure

Project Number: [none]  
Project Manager: Carter Peace

**Reported:**  
04/27/22 12:04

**WPNW**  
**2204282-07 (Soil)**

**Summit Scientific**

**Volatile Organic Compounds by EPA Method 8260B**

Date Sampled: **04/19/22 00:00**

Analyte	Result	Reporting Limit	Units	Dilution	Batch	Prepared	Analyzed	Method	Notes
Benzene	ND	0.0020	mg/kg	1	BFD0397	04/19/22	04/19/22	EPA 8260B	
Toluene	ND	0.0050	"	"	"	"	"	"	
Ethylbenzene	ND	0.0050	"	"	"	"	"	"	
Xylenes (total)	ND	0.010	"	"	"	"	"	"	
1,2,4-Trimethylbenzene	ND	0.0050	"	"	"	"	"	"	
1,3,5-Trimethylbenzene	ND	0.0050	"	"	"	"	"	"	
Naphthalene	ND	0.0038	"	"	"	"	"	"	
<b>Gasoline Range Hydrocarbons</b>	<b>1.4</b>	0.50	"	"	"	"	"	"	

Date Sampled: **04/19/22 00:00**

Analyte	Result	Reporting Limit	Units	Dilution	Batch	Prepared	Analyzed	Method	Notes
Surrogate: 1,2-Dichloroethane-d4		104 %	50-150		"	"	"	"	
Surrogate: Toluene-d8		104 %	50-150		"	"	"	"	
Surrogate: 4-Bromofluorobenzene		141 %	50-150		"	"	"	"	

**Extractable Petroleum Hydrocarbons by 8015**

Date Sampled: **04/19/22 00:00**

Analyte	Result	Reporting Limit	Units	Dilution	Batch	Prepared	Analyzed	Method	Notes
<b>C10-C28 (DRO)</b>	<b>320</b>	50	mg/kg	1	BFD0398	04/19/22	04/19/22	EPA 8015M	
C28-C36 (ORO)	ND	50	"	"	"	"	"	"	

Date Sampled: **04/19/22 00:00**

Analyte	Result	Reporting Limit	Units	Dilution	Batch	Prepared	Analyzed	Method	Notes
Surrogate: o-Terphenyl		96.3 %	30-150		"	"	"	"	

**PAH by EPA Method 8270D SIM**

**R-01**

Summit Scientific

The results in this report apply to the samples analyzed in accordance with the chain of custody document. This analytical report must be reproduced in its entirety.





GIS Peace  
2951 Niagara St  
Denver CO, 80207

Project: Colorado State Location Closure

Project Number: [none]  
Project Manager: Carter Peace

**Reported:**  
04/27/22 12:04

**WPNW**  
**2204282-07 (Soil)**

**Summit Scientific**

**PAH by EPA Method 8270D SIM**

**R-01**

Date Sampled: **04/19/22 00:00**

Analyte	Result	Reporting	Units	Dilution	Batch	Prepared	Analyzed	Method	Notes
		Limit							
Acenaphthene	ND	0.0500	mg/kg	10	BFD0400	04/20/22	04/23/22	EPA 8270D SIM	
Anthracene	ND	0.0500	"	"	"	"	"	"	
Benzo (a) anthracene	ND	0.0500	"	"	"	"	"	"	
Benzo (a) pyrene	ND	0.0500	"	"	"	"	"	"	
Benzo (b) fluoranthene	ND	0.0500	"	"	"	"	"	"	
Benzo (k) fluoranthene	ND	0.0500	"	"	"	"	"	"	
Chrysene	ND	0.0500	"	"	"	"	"	"	
Dibenz (a,h) anthracene	ND	0.0500	"	"	"	"	"	"	
Fluoranthene	ND	0.0500	"	"	"	"	"	"	
Fluorene	ND	0.0500	"	"	"	"	"	"	
Indeno (1,2,3-cd) pyrene	ND	0.0500	"	"	"	"	"	"	
Pyrene	ND	0.0500	"	"	"	"	"	"	
1-Methylnaphthalene	ND	0.0500	"	"	"	"	"	"	
2-Methylnaphthalene	ND	0.0500	"	"	"	"	"	"	

Date Sampled: **04/19/22 00:00**

Analyte	Result	Reporting	Units	Dilution	Batch	Prepared	Analyzed	Method	Notes
		Limit							
Surrogate: 2-Methylnaphthalene-d10		54.4 %	40-150		"	"	"	"	
Surrogate: Fluoranthene-d10		58.2 %	40-150		"	"	"	"	

Summit Scientific

The results in this report apply to the samples analyzed in accordance with the chain of custody document. This analytical report must be reproduced in its entirety.



GIS Peace  
2951 Niagara St  
Denver CO, 80207

Project: Colorado State Location Closure

Project Number: [none]  
Project Manager: Carter Peace

**Reported:**  
04/27/22 12:04

## Volatile Organic Compounds by EPA Method 8260B - Quality Control

### Summit Scientific

Analyte	Reporting			Spike	Source		%REC		RPD	
	Result	Limit	Units	Level	Result	%REC	Limits	RPD	Limit	Notes

#### Batch BFD0397 - EPA 5030 Soil MS

##### Blank (BFD0397-BLK1)

Prepared: 04/19/22 Analyzed: 04/20/22

Benzene	ND	0.0020	mg/kg							
Toluene	ND	0.0050	"							
Ethylbenzene	ND	0.0050	"							
Xylenes (total)	ND	0.010	"							
1,2,4-Trimethylbenzene	ND	0.0050	"							
1,3,5-Trimethylbenzene	ND	0.0050	"							
Naphthalene	ND	0.0038	"							
Gasoline Range Hydrocarbons	ND	0.50	"							
Surrogate: 1,2-Dichloroethane-d4	0.0390		"	0.0400		97.4	50-150			
Surrogate: Toluene-d8	0.0408		"	0.0400		102	50-150			
Surrogate: 4-Bromofluorobenzene	0.0379		"	0.0400		94.8	50-150			

##### LCS (BFD0397-BS1)

Prepared: 04/19/22 Analyzed: 04/20/22

Benzene	0.0628	0.0020	mg/kg	0.0750		83.7	70-130			
Toluene	0.0683	0.0050	"	0.0750		91.1	70-130			
Ethylbenzene	0.0622	0.0050	"	0.0750		82.9	70-130			
m,p-Xylene	0.126	0.010	"	0.150		83.8	70-130			
o-Xylene	0.0637	0.0050	"	0.0750		84.9	70-130			
1,2,4-Trimethylbenzene	0.0658	0.0050	"	0.0750		87.8	70-130			
1,3,5-Trimethylbenzene	0.0652	0.0050	"	0.0750		87.0	70-130			
Naphthalene	0.0653	0.0038	"	0.0750		87.1	70-130			
Surrogate: 1,2-Dichloroethane-d4	0.0405		"	0.0400		101	50-150			
Surrogate: Toluene-d8	0.0435		"	0.0400		109	50-150			
Surrogate: 4-Bromofluorobenzene	0.0418		"	0.0400		104	50-150			

##### Matrix Spike (BFD0397-MS1)

Source: 2204282-07

Prepared: 04/19/22 Analyzed: 04/20/22

Benzene	0.0621	0.0020	mg/kg	0.0750	ND	82.8	70-130			
Toluene	0.0695	0.0050	"	0.0750	ND	92.7	70-130			
Ethylbenzene	0.0710	0.0050	"	0.0750	ND	94.7	70-130			
m,p-Xylene	0.142	0.010	"	0.150	ND	94.7	70-130			
o-Xylene	0.0692	0.0050	"	0.0750	ND	92.2	70-130			
1,2,4-Trimethylbenzene	0.0716	0.0050	"	0.0750	ND	95.5	70-130			
1,3,5-Trimethylbenzene	0.0718	0.0050	"	0.0750	ND	95.8	70-130			
Naphthalene	0.0761	0.0038	"	0.0750	ND	101	70-130			
Surrogate: 1,2-Dichloroethane-d4	0.0403		"	0.0400		101	50-150			
Surrogate: Toluene-d8	0.0413		"	0.0400		103	50-150			
Surrogate: 4-Bromofluorobenzene	0.0576		"	0.0400		144	50-150			

Summit Scientific

The results in this report apply to the samples analyzed in accordance with the chain of custody document. This analytical report must be reproduced in its entirety.



GIS Peace  
2951 Niagara St  
Denver CO, 80207

Project: Colorado State Location Closure

Project Number: [none]  
Project Manager: Carter Peace

**Reported:**  
04/27/22 12:04

**Volatile Organic Compounds by EPA Method 8260B - Quality Control**  
**Summit Scientific**

Analyte	Reporting			Spike	Source		%REC		RPD	
	Result	Limit	Units	Level	Result	%REC	Limits	RPD	Limit	Notes

**Batch BFD0397 - EPA 5030 Soil MS**

Matrix Spike Dup (BFD0397-MSD1)		Source: 2204282-07			Prepared: 04/19/22 Analyzed: 04/20/22					
Benzene	0.0605	0.0020	mg/kg	0.0750	ND	80.7	70-130	2.54	30	
Toluene	0.0678	0.0050	"	0.0750	ND	90.4	70-130	2.49	30	
Ethylbenzene	0.0676	0.0050	"	0.0750	ND	90.1	70-130	5.02	30	
m,p-Xylene	0.135	0.010	"	0.150	ND	89.7	70-130	5.47	30	
o-Xylene	0.0663	0.0050	"	0.0750	ND	88.4	70-130	4.16	30	
1,2,4-Trimethylbenzene	0.0677	0.0050	"	0.0750	ND	90.3	70-130	5.60	30	
1,3,5-Trimethylbenzene	0.0680	0.0050	"	0.0750	ND	90.6	70-130	5.54	30	
Naphthalene	0.0780	0.0038	"	0.0750	ND	104	70-130	2.49	30	
<hr/>										
Surrogate: 1,2-Dichloroethane-d4	0.0379		"	0.0400		94.8	50-150			
Surrogate: Toluene-d8	0.0418		"	0.0400		105	50-150			
Surrogate: 4-Bromofluorobenzene	0.0559		"	0.0400		140	50-150			

Summit Scientific

*The results in this report apply to the samples analyzed in accordance with the chain of custody document. This analytical report must be reproduced in its entirety.*



GIS Peace  
2951 Niagara St  
Denver CO, 80207

Project: Colorado State Location Closure  
Project Number: [none]  
Project Manager: Carter Peace

**Reported:**  
04/27/22 12:04

**Extractable Petroleum Hydrocarbons by 8015 - Quality Control**  
**Summit Scientific**

Analyte	Reporting			Spike	Source		%REC		RPD	
	Result	Limit	Units	Level	Result	%REC	Limits	RPD	Limit	Notes

**Batch BFD0398 - EPA 3550A**

**Blank (BFD0398-BLK1)**

Prepared & Analyzed: 04/19/22

C10-C28 (DRO)	ND	50	mg/kg
C28-C36 (ORO)	ND	50	"

**LCS (BFD0398-BS1)**

Prepared: 04/19/22 Analyzed: 04/20/22

C10-C28 (DRO)	421	50	mg/kg	500	84.2	70-130
---------------	-----	----	-------	-----	------	--------

**Matrix Spike (BFD0398-MS1)**

Source: 2204282-07

Prepared: 04/19/22 Analyzed: 04/20/22

C10-C28 (DRO)	617	50	mg/kg	500	319	59.8	70-130			QM-07
---------------	-----	----	-------	-----	-----	------	--------	--	--	-------

**Matrix Spike Dup (BFD0398-MSD1)**

Source: 2204282-07

Prepared: 04/19/22 Analyzed: 04/20/22

C10-C28 (DRO)	647	50	mg/kg	500	319	65.6	70-130	4.63	20	QM-07
---------------	-----	----	-------	-----	-----	------	--------	------	----	-------

Summit Scientific

*The results in this report apply to the samples analyzed in accordance with the chain of custody document. This analytical report must be reproduced in its entirety.*





GIS Peace  
2951 Niagara St  
Denver CO, 80207

Project: Colorado State Location Closure  
Project Number: [none]  
Project Manager: Carter Peace

**Reported:**  
04/27/22 12:04

## PAH by EPA Method 8270D SIM - Quality Control

### Summit Scientific

Analyte	Reporting			Spike		Source		%REC		RPD	
	Result	Limit	Units	Level		Result		%REC	Limits	RPD	Limit

#### Batch BFD0400 - EPA 5030 Soil MS

##### Blank (BFD0400-BLK1)

Prepared: 04/20/22 Analyzed: 04/21/22

Acenaphthene	ND	0.00500	mg/kg								
Anthracene	ND	0.00500	"								
Benzo (a) anthracene	ND	0.00500	"								
Benzo (a) pyrene	ND	0.00500	"								
Benzo (b) fluoranthene	ND	0.00500	"								
Benzo (k) fluoranthene	ND	0.00500	"								
Chrysene	ND	0.00500	"								
Dibenz (a,h) anthracene	ND	0.00500	"								
Fluoranthene	ND	0.00500	"								
Fluorene	ND	0.00500	"								
Indeno (1,2,3-cd) pyrene	ND	0.00500	"								
Pyrene	ND	0.00500	"								
1-Methylnaphthalene	ND	0.00500	"								
2-Methylnaphthalene	ND	0.00500	"								
Surrogate: 2-Methylnaphthalene-d10	0.0264		"	0.0333		79.3		40-150			
Surrogate: Fluoranthene-d10	0.0310		"	0.0333		92.9		40-150			

##### LCS (BFD0400-BS1)

Prepared: 04/20/22 Analyzed: 04/21/22

Acenaphthene	0.0299	0.00500	mg/kg	0.0333		89.6		31-137			
Anthracene	0.0292	0.00500	"	0.0333		87.5		30-120			
Benzo (a) anthracene	0.0299	0.00500	"	0.0333		89.7		30-120			
Benzo (a) pyrene	0.0285	0.00500	"	0.0333		85.5		30-120			
Benzo (b) fluoranthene	0.0309	0.00500	"	0.0333		92.6		30-120			
Benzo (k) fluoranthene	0.0331	0.00500	"	0.0333		99.2		30-120			
Chrysene	0.0304	0.00500	"	0.0333		91.3		30-120			
Dibenz (a,h) anthracene	0.0174	0.00500	"	0.0333		52.1		30-120			
Fluoranthene	0.0307	0.00500	"	0.0333		92.0		30-120			
Fluorene	0.0300	0.00500	"	0.0333		90.0		30-120			
Indeno (1,2,3-cd) pyrene	0.0112	0.00500	"	0.0333		33.7		30-120			
Pyrene	0.0316	0.00500	"	0.0333		94.7		35-142			
1-Methylnaphthalene	0.0310	0.00500	"	0.0333		92.9		35-142			
2-Methylnaphthalene	0.0257	0.00500	"	0.0333		77.2		35-142			
Surrogate: 2-Methylnaphthalene-d10	0.0304		"	0.0333		91.3		40-150			
Surrogate: Fluoranthene-d10	0.0324		"	0.0333		97.3		40-150			

Summit Scientific

The results in this report apply to the samples analyzed in accordance with the chain of custody document. This analytical report must be reproduced in its entirety.



GIS Peace  
2951 Niagara St  
Denver CO, 80207

Project: Colorado State Location Closure  
Project Number: [none]  
Project Manager: Carter Peace

**Reported:**  
04/27/22 12:04

## PAH by EPA Method 8270D SIM - Quality Control

### Summit Scientific

Analyte	Reporting			Spike Level	Source		%REC		RPD	
	Result	Limit	Units		Result	%REC	Limits	RPD	Limit	Notes

#### Batch BFD0400 - EPA 5030 Soil MS

##### Matrix Spike (BFD0400-MS1)

Source: 2204123-02

Prepared: 04/20/22 Analyzed: 04/21/22

Acenaphthene	0.0151	0.00500	mg/kg	0.0333	ND	45.3	31-137		
Anthracene	0.0161	0.00500	"	0.0333	ND	48.4	30-120		
Benzo (a) anthracene	0.0156	0.00500	"	0.0333	ND	46.9	30-120		
Benzo (a) pyrene	0.0140	0.00500	"	0.0333	ND	41.9	30-120		
Benzo (b) fluoranthene	0.0150	0.00500	"	0.0333	ND	44.9	30-120		
Benzo (k) fluoranthene	0.0152	0.00500	"	0.0333	ND	45.5	30-120		
Chrysene	0.0150	0.00500	"	0.0333	ND	45.0	30-120		
Dibenz (a,h) anthracene	0.0184	0.00500	"	0.0333	ND	55.0	30-120		
Fluoranthene	0.0173	0.00500	"	0.0333	ND	51.8	30-120		
Fluorene	0.0157	0.00500	"	0.0333	ND	47.2	30-120		
Indeno (1,2,3-cd) pyrene	0.0191	0.00500	"	0.0333	ND	57.4	30-120		
Pyrene	0.0163	0.00500	"	0.0333	ND	49.0	35-142		
1-Methylnaphthalene	0.0149	0.00500	"	0.0333	ND	44.8	15-130		
2-Methylnaphthalene	0.0133	0.00500	"	0.0333	ND	40.0	15-130		
Surrogate: 2-Methylnaphthalene-d10	0.0143		"	0.0333		43.0	40-150		
Surrogate: Fluoranthene-d10	0.0178		"	0.0333		53.5	40-150		

##### Matrix Spike Dup (BFD0400-MSD1)

Source: 2204123-02

Prepared: 04/20/22 Analyzed: 04/21/22

Acenaphthene	0.0165	0.00500	mg/kg	0.0333	ND	49.4	31-137	8.64	30
Anthracene	0.0178	0.00500	"	0.0333	ND	53.4	30-120	9.78	30
Benzo (a) anthracene	0.0181	0.00500	"	0.0333	ND	54.3	30-120	14.6	30
Benzo (a) pyrene	0.0162	0.00500	"	0.0333	ND	48.6	30-120	15.0	30
Benzo (b) fluoranthene	0.0170	0.00500	"	0.0333	ND	50.9	30-120	12.5	30
Benzo (k) fluoranthene	0.0170	0.00500	"	0.0333	ND	51.0	30-120	11.5	30
Chrysene	0.0177	0.00500	"	0.0333	ND	53.0	30-120	16.3	30
Dibenz (a,h) anthracene	0.0200	0.00500	"	0.0333	ND	60.1	30-120	8.73	30
Fluoranthene	0.0195	0.00500	"	0.0333	ND	58.5	30-120	12.1	30
Fluorene	0.0176	0.00500	"	0.0333	ND	52.9	30-120	11.3	30
Indeno (1,2,3-cd) pyrene	0.0170	0.00500	"	0.0333	ND	50.9	30-120	12.1	30
Pyrene	0.0183	0.00500	"	0.0333	ND	54.8	35-142	11.2	30
1-Methylnaphthalene	0.0175	0.00500	"	0.0333	ND	52.4	15-130	15.8	50
2-Methylnaphthalene	0.0153	0.00500	"	0.0333	ND	45.9	15-130	13.8	50
Surrogate: 2-Methylnaphthalene-d10	0.0211		"	0.0333		63.3	40-150		
Surrogate: Fluoranthene-d10	0.0199		"	0.0333		59.7	40-150		

Summit Scientific

The results in this report apply to the samples analyzed in accordance with the chain of custody document. This analytical report must be reproduced in its entirety.



GIS Peace  
2951 Niagara St  
Denver CO, 80207

Project: Colorado State Location Closure

Project Number: [none]  
Project Manager: Carter Peace

**Reported:**  
04/27/22 12:04

### Notes and Definitions

S-02	The surrogate recovery for this sample cannot be accurately quantified due to interference from coeluting organic compounds present in the sample extract.
R-01	The Reporting Limit for this analyte has been raised to account for matrix interference.
QM-07	The spike recovery was outside acceptance limits for the MS and/or MSD. The batch was accepted based on acceptable LCS/LCSD recovery.
DET	Analyte DETECTED
ND	Analyte NOT DETECTED at or above the reporting limit
NR	Not Reported
dry	Sample results reported on a dry weight basis
RPD	Relative Percent Difference

# Summit Scientific

---

4653 Table Mountain Drive, Golden, Colorado 80403

303.277.9310

August 01, 2022

Carter Peace

GIS Peace

2951 Niagara St

Denver, CO 80207

RE: Colorado State Location Closure

Work Order #2207300

Enclosed are the results of analyses for samples received by Summit Scientific on 07/21/22 13:00. If you have any questions concerning this report, please feel free to contact me.

Sincerely,

A handwritten signature in black ink, appearing to read "Mikayla Axtell", is written over a light gray rectangular background.

Mikayla Axtell For Paul Shrewsbury  
President





GIS Peace  
2951 Niagara St  
Denver CO, 80207

Project: Colorado State Location Closure

Project Number: [none]  
Project Manager: Carter Peace

**Reported:**  
08/01/22 09:35

#### ANALYTICAL REPORT FOR SAMPLES

Sample ID	Laboratory ID	Matrix	Date Sampled	Date Received
WPB@7'	2207300-01	Soil	07/21/22 00:00	07/21/22 13:00

Summit Scientific

*The results in this report apply to the samples analyzed in accordance with the chain of custody document. This analytical report must be reproduced in its entirety.*

# Summit Scientific

2207300

S<sub>2</sub>

4653 Table Mountain Drive ♦ Golden, Colorado 80403

303-277-9310

Client:

COIS PEACE

Project Manager:

C. PEACE

Page

of

1

Address:

E-Mail:

City/State/Zip:

Phone:

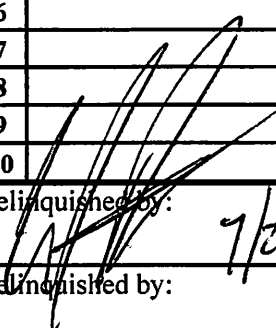
Project Name: CO STATE LOCATION CLOSURE

Sampler Name:

CSP

Project Number:

ID	Sample Description	Date Sampled	Time Sampled	# of containers	Preservative				Matrix				Analysis Requested								Special Instructions				
					HCl	HNO <sub>3</sub>	None	Other	Water	Soil	Air-Canister #	Other													
1	WPBW 7'	7/21/22		1			X			X				X											
2	WPBW 8'	7/21/22		1			X			X				X											HOLD
3																									
4																									
5																									
6																									
7																									
8																									
9																									
10																									

Relinquished by: 

Relinquished by: \_\_\_\_\_

Date/Time: 7/21/22 1300

Date/Time: \_\_\_\_\_

Received by: Sheri Barb

Received by: \_\_\_\_\_

Date/Time: 7/21/22 1300

Date/Time: \_\_\_\_\_

Turn Around Time (Check)

Same Day \_\_\_\_\_ 72 hours \_\_\_\_\_

24 hours \_\_\_\_\_ Standard \_\_\_\_\_

48 hours \_\_\_\_\_

Notes: HOLD WPBW 8' PENDING RESULTS OF WPBW 7'

Temperature Upon Receipt: 16.5

IR gun correction: \_\_\_\_\_

Corrected Temperature \_\_\_\_\_

IR gun #: \_\_\_\_\_

HNO<sub>3</sub> lot # \_\_\_\_\_

Sample Integrity: Yes No

Samples Intact: Yes No

S<sub>2</sub>

## Sample Receipt Checklist

S2 Work Order# 2207300

Client: GIS PEACE Client Project ID: CO state location closure

Shipped Via: H.D./P.U./FedEx/UPS/USPS/Other \_\_\_\_\_ Airbill #: \_\_\_\_\_

✓				
---	--	--	--	--

Matrix (Check all that apply) Air ☐ Soil/Solid ☒ Water ☐ Other ☐Temp (°C) 6.5 Thermometer # 2

	Yes	No	N/A	Comments (if any)
If samples require cooling, is the temperature < 6 °C <sup>(1)</sup> ? <b>NOTE:</b> If samples are delivered the same day of sampling, this requirement is met if there is evidence that cooling has begun.	✓			ice
Were all samples received intact <sup>(1)</sup> ?	✓			
Was adequate sample volume provided <sup>(1)</sup> ?	✓			
If custody seals are present, are they intact <sup>(1)</sup> ?			✓	
Are samples due within 48 hours present?			✓	
Are water samples with short hold times present? Note the short hold analysis in the comments column - pH, Nitrate/Nitrite, Ferrous Iron (Fe <sup>2+</sup> ), Hexavalent Chromium (Cr <sup>6+</sup> , Cr VI), COD/BOD, Total Coliform, E. Coli, Total Residual Chlorine (TRC), Dissolved Oxygen			✓	
Is a chain-of-custody (COC) form present and filled out completely <sup>(1)</sup> ?	✓			
Does the COC agree with the number and type of sample bottles received <sup>(1)</sup> ?	✓			
Do the sample IDs on the bottle labels match the COC <sup>(1)</sup> ?	✓			
Is the COC properly relinquished by the client w/ date and time recorded <sup>(1)</sup> ?	✓			
For volatiles in water – is there headspace present? <b>If yes, contact client and note in narrative.</b>			✓	
Are samples preserved that require preservation (excluding cooling) <sup>(1)</sup> ? Note the type of preservative in the comments column – HCl, H <sub>2</sub> SO <sub>4</sub> , NaOH, HNO <sub>3</sub> , etc.			✓	
If samples are acid preserved for metals, is the pH ≤ 2 <sup>(1)</sup> ? Record the pH in Comments.			✓	
If dissolved metals are requested, were samples field filtered?			✓	
Additional Comments (if any):				
<sup>(1)</sup> If NO, then contact the client before proceeding with analysis and note in case narrative.				

S3

Custodian Printed Name

7/21/22 13 00

Date/Time



GIS Peace  
2951 Niagara St  
Denver CO, 80207

Project: Colorado State Location Closure

Project Number: [none]  
Project Manager: Carter Peace

**Reported:**  
08/01/22 09:35

**WPB@7'**  
**2207300-01 (Soil)**

**Summit Scientific**

**Volatile Organic Compounds by EPA Method 8260B**

Date Sampled: **07/21/22 00:00**

Analyte	Result	Reporting Limit	Units	Dilution	Batch	Prepared	Analyzed	Method	Notes
Benzene	ND	0.0020	mg/kg	1	BFG0414	07/22/22	07/28/22	EPA 8260B	
Toluene	ND	0.0050	"	"	"	"	"	"	
Ethylbenzene	ND	0.0050	"	"	"	"	"	"	
Xylenes (total)	ND	0.010	"	"	"	"	"	"	
1,2,4-Trimethylbenzene	ND	0.0050	"	"	"	"	"	"	
1,3,5-Trimethylbenzene	ND	0.0050	"	"	"	"	"	"	
Naphthalene	ND	0.0038	"	"	"	"	"	"	
Gasoline Range Hydrocarbons	ND	0.50	"	"	"	"	"	"	

Date Sampled: **07/21/22 00:00**

Analyte	Result	Reporting Limit	Units	Dilution	Batch	Prepared	Analyzed	Method	Notes
Surrogate: 1,2-Dichloroethane-d4		111 %	50-150		"	"	"	"	
Surrogate: Toluene-d8		105 %	50-150		"	"	"	"	
Surrogate: 4-Bromofluorobenzene		100 %	50-150		"	"	"	"	

**Extractable Petroleum Hydrocarbons by 8015**

Date Sampled: **07/21/22 00:00**

Analyte	Result	Reporting Limit	Units	Dilution	Batch	Prepared	Analyzed	Method	Notes
C10-C28 (DRO)	ND	50	mg/kg	1	BFG0416	07/22/22	07/25/22	EPA 8015M	
C28-C36 (ORO)	ND	50	"	"	"	"	"	"	

Date Sampled: **07/21/22 00:00**

Analyte	Result	Reporting Limit	Units	Dilution	Batch	Prepared	Analyzed	Method	Notes
Surrogate: o-Terphenyl		102 %	30-150		"	"	"	"	

**PAH by EPA Method 8270D SIM**

Summit Scientific

The results in this report apply to the samples analyzed in accordance with the chain of custody document. This analytical report must be reproduced in its entirety.





GIS Peace  
2951 Niagara St  
Denver CO, 80207

Project: Colorado State Location Closure

Project Number: [none]  
Project Manager: Carter Peace

**Reported:**  
08/01/22 09:35

**WPB@7'**  
**2207300-01 (Soil)**

**Summit Scientific**

**PAH by EPA Method 8270D SIM**

Date Sampled: **07/21/22 00:00**

Analyte	Result	Reporting	Units	Dilution	Batch	Prepared	Analyzed	Method	Notes
		Limit							
Acenaphthene	ND	0.00500	mg/kg	1	BFG0412	07/22/22	07/24/22	EPA 8270D SIM	
Anthracene	ND	0.00500	"	"	"	"	"	"	
Benzo (a) anthracene	ND	0.00500	"	"	"	"	"	"	
Benzo (a) pyrene	ND	0.00500	"	"	"	"	"	"	
Benzo (b) fluoranthene	ND	0.00500	"	"	"	"	"	"	
Benzo (k) fluoranthene	ND	0.00500	"	"	"	"	"	"	
Chrysene	ND	0.00500	"	"	"	"	"	"	
Dibenz (a,h) anthracene	ND	0.00500	"	"	"	"	"	"	
Fluoranthene	ND	0.00500	"	"	"	"	"	"	
Fluorene	ND	0.00500	"	"	"	"	"	"	
Indeno (1,2,3-cd) pyrene	ND	0.00500	"	"	"	"	"	"	
Pyrene	ND	0.00500	"	"	"	"	"	"	
1-Methylnaphthalene	ND	0.00500	"	"	"	"	"	"	
2-Methylnaphthalene	ND	0.00500	"	"	"	"	"	"	

Date Sampled: **07/21/22 00:00**

Analyte	Result	Reporting	Units	Dilution	Batch	Prepared	Analyzed	Method	Notes
		Limit							
Surrogate: 2-Methylnaphthalene-d10		80.6 %	40-150		"	"	"	"	
Surrogate: Fluoranthene-d10		80.0 %	40-150		"	"	"	"	

Summit Scientific

*The results in this report apply to the samples analyzed in accordance with the chain of custody document. This analytical report must be reproduced in its entirety.*



GIS Peace  
2951 Niagara St  
Denver CO, 80207

Project: Colorado State Location Closure

Project Number: [none]  
Project Manager: Carter Peace

**Reported:**  
08/01/22 09:35

## Volatile Organic Compounds by EPA Method 8260B - Quality Control

### Summit Scientific

Analyte	Reporting			Spike	Source		%REC		RPD	
	Result	Limit	Units	Level	Result	%REC	Limits	RPD	Limit	Notes

#### Batch BFG0414 - EPA 5030 Soil MS

##### Blank (BFG0414-BLK1)

Prepared: 07/22/22 Analyzed: 07/23/22

Benzene	ND	0.0020	mg/kg							
Toluene	ND	0.0050	"							
Ethylbenzene	ND	0.0050	"							
Xylenes (total)	ND	0.010	"							
1,2,4-Trimethylbenzene	ND	0.0050	"							
1,3,5-Trimethylbenzene	ND	0.0050	"							
Naphthalene	ND	0.0038	"							
Gasoline Range Hydrocarbons	ND	0.50	"							
Surrogate: 1,2-Dichloroethane-d4	0.0377		"	0.0400		94.4	50-150			
Surrogate: Toluene-d8	0.0398		"	0.0400		99.4	50-150			
Surrogate: 4-Bromofluorobenzene	0.0394		"	0.0400		98.6	50-150			

##### LCS (BFG0414-BS1)

Prepared: 07/22/22 Analyzed: 07/23/22

Benzene	0.0680	0.0020	mg/kg	0.0750		90.6	70-130			
Toluene	0.0741	0.0050	"	0.0750		98.8	70-130			
Ethylbenzene	0.0763	0.0050	"	0.0750		102	70-130			
m,p-Xylene	0.153	0.010	"	0.150		102	70-130			
o-Xylene	0.0734	0.0050	"	0.0750		97.8	70-130			
1,2,4-Trimethylbenzene	0.0810	0.0050	"	0.0750		108	70-130			
1,3,5-Trimethylbenzene	0.0797	0.0050	"	0.0750		106	70-130			
Naphthalene	0.0790	0.0038	"	0.0750		105	70-130			
Surrogate: 1,2-Dichloroethane-d4	0.0339		"	0.0400		84.8	50-150			
Surrogate: Toluene-d8	0.0401		"	0.0400		100	50-150			
Surrogate: 4-Bromofluorobenzene	0.0383		"	0.0400		95.8	50-150			

##### Matrix Spike (BFG0414-MS1)

Source: 2207285-01

Prepared: 07/22/22 Analyzed: 07/23/22

Benzene	0.0653	0.0020	mg/kg	0.0750	ND	87.0	70-130			
Toluene	0.0703	0.0050	"	0.0750	ND	93.8	70-130			
Ethylbenzene	0.0756	0.0050	"	0.0750	ND	101	70-130			
m,p-Xylene	0.151	0.010	"	0.150	0.00384	98.4	70-130			
o-Xylene	0.0738	0.0050	"	0.0750	ND	98.4	70-130			
1,2,4-Trimethylbenzene	0.0836	0.0050	"	0.0750	ND	111	70-130			
1,3,5-Trimethylbenzene	0.0802	0.0050	"	0.0750	ND	107	70-130			
Naphthalene	0.0900	0.0038	"	0.0750	ND	120	70-130			
Surrogate: 1,2-Dichloroethane-d4	0.0324		"	0.0400		81.0	50-150			
Surrogate: Toluene-d8	0.0394		"	0.0400		98.4	50-150			
Surrogate: 4-Bromofluorobenzene	0.0380		"	0.0400		94.9	50-150			

Summit Scientific

The results in this report apply to the samples analyzed in accordance with the chain of custody document. This analytical report must be reproduced in its entirety.



GIS Peace  
2951 Niagara St  
Denver CO, 80207

Project: Colorado State Location Closure

Project Number: [none]  
Project Manager: Carter Peace

**Reported:**  
08/01/22 09:35

**Volatile Organic Compounds by EPA Method 8260B - Quality Control**  
**Summit Scientific**

Analyte	Reporting			Spike	Source		%REC		RPD	
	Result	Limit	Units	Level	Result	%REC	Limits	RPD	Limit	Notes

**Batch BFG0414 - EPA 5030 Soil MS**

Matrix Spike Dup (BFG0414-MSD1)	Source: 2207285-01			Prepared: 07/22/22 Analyzed: 07/23/22						
Benzene	0.0626	0.0020	mg/kg	0.0750	ND	83.4	70-130	4.22	30	
Toluene	0.0699	0.0050	"	0.0750	ND	93.2	70-130	0.642	30	
Ethylbenzene	0.0757	0.0050	"	0.0750	ND	101	70-130	0.119	30	
m,p-Xylene	0.152	0.010	"	0.150	0.00384	99.0	70-130	0.573	30	
o-Xylene	0.0740	0.0050	"	0.0750	ND	98.6	70-130	0.284	30	
1,2,4-Trimethylbenzene	0.0835	0.0050	"	0.0750	ND	111	70-130	0.144	30	
1,3,5-Trimethylbenzene	0.0815	0.0050	"	0.0750	ND	109	70-130	1.59	30	
Naphthalene	0.0916	0.0038	"	0.0750	ND	122	70-130	1.69	30	
Surrogate: 1,2-Dichloroethane-d4	0.0336		"	0.0400		84.0	50-150			
Surrogate: Toluene-d8	0.0398		"	0.0400		99.5	50-150			
Surrogate: 4-Bromofluorobenzene	0.0385		"	0.0400		96.3	50-150			

Summit Scientific

*The results in this report apply to the samples analyzed in accordance with the chain of custody document. This analytical report must be reproduced in its entirety.*



GIS Peace  
2951 Niagara St  
Denver CO, 80207

Project: Colorado State Location Closure

Project Number: [none]  
Project Manager: Carter Peace

**Reported:**  
08/01/22 09:35

**Extractable Petroleum Hydrocarbons by 8015 - Quality Control**  
**Summit Scientific**

Analyte	Result	Reporting		Spike Level	Source		%REC		RPD	
		Limit	Units		Result	%REC	Limits	RPD	Limit	Notes

**Batch BFG0416 - EPA 3550A**

**Blank (BFG0416-BLK1)**

Prepared & Analyzed: 07/22/22

C10-C28 (DRO)	ND	50	mg/kg
C28-C36 (ORO)	ND	50	"

**LCS (BFG0416-BS1)**

Prepared & Analyzed: 07/22/22

C10-C28 (DRO)	589	50	mg/kg	500	118	70-130
---------------	-----	----	-------	-----	-----	--------

**Matrix Spike (BFG0416-MS1)**

Source: 2207285-01

Prepared & Analyzed: 07/22/22

C10-C28 (DRO)	504	50	mg/kg	500	32.4	94.2	70-130
---------------	-----	----	-------	-----	------	------	--------

**Matrix Spike Dup (BFG0416-MSD1)**

Source: 2207285-01

Prepared & Analyzed: 07/22/22

C10-C28 (DRO)	474	50	mg/kg	500	32.4	88.2	70-130	6.13	20
---------------	-----	----	-------	-----	------	------	--------	------	----

Summit Scientific

*The results in this report apply to the samples analyzed in accordance with the chain of custody document. This analytical report must be reproduced in its entirety.*





GIS Peace  
2951 Niagara St  
Denver CO, 80207

Project: Colorado State Location Closure  
Project Number: [none]  
Project Manager: Carter Peace

**Reported:**  
08/01/22 09:35

## PAH by EPA Method 8270D SIM - Quality Control

### Summit Scientific

Analyte	Reporting			Spike		Source		%REC		RPD	
	Result	Limit	Units	Level		Result		%REC	Limits	RPD	Limit

#### Batch BFG0412 - EPA 5030 Soil MS

##### Blank (BFG0412-BLK1)

Prepared: 07/22/22 Analyzed: 07/23/22

Acenaphthene	ND	0.00500	mg/kg								
Anthracene	ND	0.00500	"								
Benzo (a) anthracene	ND	0.00500	"								
Benzo (a) pyrene	ND	0.00500	"								
Benzo (b) fluoranthene	ND	0.00500	"								
Benzo (k) fluoranthene	ND	0.00500	"								
Chrysene	ND	0.00500	"								
Dibenz (a,h) anthracene	ND	0.00500	"								
Fluoranthene	ND	0.00500	"								
Fluorene	ND	0.00500	"								
Indeno (1,2,3-cd) pyrene	ND	0.00500	"								
Pyrene	ND	0.00500	"								
1-Methylnaphthalene	ND	0.00500	"								
2-Methylnaphthalene	ND	0.00500	"								
Surrogate: 2-Methylnaphthalene-d10	0.0380		"	0.0333		114		40-150			
Surrogate: Fluoranthene-d10	0.0296		"	0.0333		88.9		40-150			

##### LCS (BFG0412-BS1)

Prepared: 07/22/22 Analyzed: 07/23/22

Acenaphthene	0.0269	0.00500	mg/kg	0.0333		80.6		31-137			
Anthracene	0.0355	0.00500	"	0.0333		107		30-120			
Benzo (a) anthracene	0.0356	0.00500	"	0.0333		107		30-120			
Benzo (a) pyrene	0.0356	0.00500	"	0.0333		107		30-120			
Benzo (b) fluoranthene	0.0369	0.00500	"	0.0333		111		30-120			
Benzo (k) fluoranthene	0.0343	0.00500	"	0.0333		103		30-120			
Chrysene	0.0385	0.00500	"	0.0333		116		30-120			
Dibenz (a,h) anthracene	0.0309	0.00500	"	0.0333		92.7		30-120			
Fluoranthene	0.0313	0.00500	"	0.0333		93.8		30-120			
Fluorene	0.0252	0.00500	"	0.0333		75.7		30-120			
Indeno (1,2,3-cd) pyrene	0.0267	0.00500	"	0.0333		80.1		30-120			
Pyrene	0.0381	0.00500	"	0.0333		114		35-142			
1-Methylnaphthalene	0.0342	0.00500	"	0.0333		103		35-142			
2-Methylnaphthalene	0.0255	0.00500	"	0.0333		76.6		35-142			
Surrogate: 2-Methylnaphthalene-d10	0.0301		"	0.0333		90.2		40-150			
Surrogate: Fluoranthene-d10	0.0358		"	0.0333		107		40-150			

Summit Scientific

The results in this report apply to the samples analyzed in accordance with the chain of custody document. This analytical report must be reproduced in its entirety.



GIS Peace  
2951 Niagara St  
Denver CO, 80207

Project: Colorado State Location Closure

Project Number: [none]  
Project Manager: Carter Peace

**Reported:**  
08/01/22 09:35

## PAH by EPA Method 8270D SIM - Quality Control

### Summit Scientific

Analyte	Reporting			Spike	Source	%REC		RPD		
	Result	Limit	Units	Level	Result	%REC	Limits	RPD	Limit	Notes

#### Batch BFG0412 - EPA 5030 Soil MS

##### Matrix Spike (BFG0412-MS1)

Source: 2207292-01

Prepared: 07/22/22 Analyzed: 07/23/22

Acenaphthene	0.0190	0.00500	mg/kg	0.0333	ND	57.1	31-137			
Anthracene	0.0328	0.00500	"	0.0333	ND	98.5	30-120			
Benzo (a) anthracene	0.0239	0.00500	"	0.0333	ND	71.6	30-120			
Benzo (a) pyrene	0.0247	0.00500	"	0.0333	ND	74.2	30-120			
Benzo (b) fluoranthene	0.0275	0.00500	"	0.0333	ND	82.4	30-120			
Benzo (k) fluoranthene	0.0322	0.00500	"	0.0333	ND	96.6	30-120			
Chrysene	0.0283	0.00500	"	0.0333	ND	84.8	30-120			
Dibenz (a,h) anthracene	0.0179	0.00500	"	0.0333	ND	53.6	30-120			
Fluoranthene	0.0349	0.00500	"	0.0333	ND	105	30-120			
Fluorene	0.0181	0.00500	"	0.0333	ND	54.2	30-120			
Indeno (1,2,3-cd) pyrene	0.0158	0.00500	"	0.0333	ND	47.5	30-120			
Pyrene	0.0365	0.00500	"	0.0333	ND	109	35-142			
1-Methylnaphthalene	0.0236	0.00500	"	0.0333	ND	70.7	15-130			
2-Methylnaphthalene	0.0179	0.00500	"	0.0333	ND	53.7	15-130			
Surrogate: 2-Methylnaphthalene-d10	0.0209		"	0.0333		62.6	40-150			
Surrogate: Fluoranthene-d10	0.0270		"	0.0333		81.1	40-150			

##### Matrix Spike Dup (BFG0412-MSD1)

Source: 2207292-01

Prepared: 07/22/22 Analyzed: 07/23/22

Acenaphthene	0.0213	0.00500	mg/kg	0.0333	ND	63.8	31-137	11.1	30
Anthracene	0.0373	0.00500	"	0.0333	ND	112	30-120	12.8	30
Benzo (a) anthracene	0.0264	0.00500	"	0.0333	ND	79.2	30-120	10.1	30
Benzo (a) pyrene	0.0276	0.00500	"	0.0333	ND	82.7	30-120	10.8	30
Benzo (b) fluoranthene	0.0305	0.00500	"	0.0333	ND	91.6	30-120	10.6	30
Benzo (k) fluoranthene	0.0356	0.00500	"	0.0333	ND	107	30-120	10.1	30
Chrysene	0.0309	0.00500	"	0.0333	ND	92.7	30-120	8.96	30
Dibenz (a,h) anthracene	0.0200	0.00500	"	0.0333	ND	59.9	30-120	11.0	30
Fluoranthene	0.0373	0.00500	"	0.0333	ND	112	30-120	6.59	30
Fluorene	0.0187	0.00500	"	0.0333	ND	56.0	30-120	3.22	30
Indeno (1,2,3-cd) pyrene	0.0191	0.00500	"	0.0333	ND	57.2	30-120	18.7	30
Pyrene	0.0395	0.00500	"	0.0333	ND	119	35-142	7.90	30
1-Methylnaphthalene	0.0270	0.00500	"	0.0333	ND	80.9	15-130	13.5	50
2-Methylnaphthalene	0.0249	0.00500	"	0.0333	ND	74.8	15-130	32.8	50
Surrogate: 2-Methylnaphthalene-d10	0.0243		"	0.0333		73.0	40-150		
Surrogate: Fluoranthene-d10	0.0286		"	0.0333		85.9	40-150		

Summit Scientific

The results in this report apply to the samples analyzed in accordance with the chain of custody document. This analytical report must be reproduced in its entirety.



GIS Peace  
2951 Niagara St  
Denver CO, 80207

Project: Colorado State Location Closure

Project Number: [none]  
Project Manager: Carter Peace

**Reported:**  
08/01/22 09:35

### Notes and Definitions

DET	Analyte DETECTED
ND	Analyte NOT DETECTED at or above the reporting limit
NR	Not Reported
dry	Sample results reported on a dry weight basis
RPD	Relative Percent Difference

# American Agricultural Laboratory, Inc.

700 West D St. / P.O. Box 370 / McCook, Nebraska 69001

Office: 308-345-3670 / FAX: 308-345-7880 / [www.AmAgLab.com](http://www.AmAgLab.com)

*"Analysis You Can Grow With"®*



DC DOZER SERVICE  
1403 FILLMORE ST  
STERLING CO 80751

ACCOUNT NO: 20423  
DATE RECEIVED: 12/8/2021  
DATE REPORTED: 12/10/2021

## SATURATED PASTE EXTRACT ANALYSIS

Lab No.	Grower	Sample ID	Depth inches	pH s.u.	EC mhos/cm
3373139	TODD TROUTMAN	BACKGROUND NORTH	0-8	7.85	0.65
3373140	TODD TROUTMAN	BACKGROUND SOUTH	0-8	7.80	0.97
3373141	TODD TROUTMAN	WPSB	0-8	8.72	1.80
3373142	TODD TROUTMAN	WPSS	0-8	8.73	1.27
3373143	TODD TROUTMAN	CENTER BERM (CB)	0-8	8.81	2.97
3373144	TODD TROUTMAN	CENTER SURFACE (CS)	0-8	7.36	4.19
3373145	TODD TROUTMAN	WPWB	0-8	7.96	3.15
3373146	TODD TROUTMAN	WPWS	0-8	9.33	3.20
3373147	TODD TROUTMAN	WPNB	0-8	7.74	2.64
3373148	TODD TROUTMAN	WPNS	0-8	7.72	2.67
3373149	TODD TROUTMAN	EPSB	0-8	8.76	1.48
3373150	TODD TROUTMAN	EPSS	0-8	8.54	1.61
3373151	TODD TROUTMAN	EPEB	0-8	9.16	2.07
3373152	TODD TROUTMAN	EPES	0-8	8.34	1.15
3373153	TODD TROUTMAN	EPNB	0-8	8.62	2.14
3373154	TODD TROUTMAN	EPNS	0-8	9.07	1.83

Approved By:

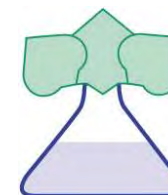


# American Agricultural Laboratory, Inc.

700 West D Street / PO Box 370 / McCook, Nebraska 69001

Office: 308-345-3670 / FAX: 308-345-7880

www.AmAgLab.com



20423

DC DOZER SERVICE

1403 FILLMORE ST

STERLING CO 80751

NAME : TODD TROUTMAN

DATE RECEIVED: 12/08/2021

DATE REPORTED: 12/13/2021

## SOIL TEST RESULTS

LAB NUMBER	FIELD IDENTIFICATION	SAMPLE IDENTIFICATION	Depth Inches	pH		EL	SOLUBLE SALTS mod. SP mmhos/cm	OM LOI %	NITRATE-N (FIA)		PHOSPHORUS				
				1 : 1 Soil	Buffer Woodruff				ppm	lbs/A	P1 ppm	Bicarb ppm	P2 ppm	M2 ppm	M3 ppm
3373139	BACKGROUND NORTH		0-8												
3373140	BACKGROUND SOUTH		0-8												
3373141	WPSB		0-8												
3373142	WPSS		0-8												
3373143	CENTER BERM CB		0-8												
3373144	CENTER SURFACE CS		0-8												

LAB NUMBER	SULFATE-S Ca-P ppm	NH4OAc (Exchangeable)				DTPA				BORON Sorbitol ppm	EST. CATION EXCHANGE CAPACITY (CEC) me/100g	% SATURATION					
		K ppm	Ca ppm	Mg ppm	Na ppm	Zn ppm	Fe ppm	Mn ppm	Cu ppm			BASE	H	Ca	Mg	K	Na
3373139										0.6							
3373140										0.7							
3373141										2.1							
3373142										3.0							
3373143										2.3							
3373144										0.4							

LAB NUMBER	SOLUBLE (SAT. EXT.)			SODIUM ADSORPTION RATIO (SAR)	EXCH. SODIUM PERCENT (ESP)	GYPSUM REQ T/A	PARTICLE SIZE ANALYSIS				CHLORIDE		EXCH. NH4-N		ALUMINUM ppm	TOTAL N %
	Ca me/L	Mg me/L	Na me/L				SAND %	SILT %	CLAY %	SOIL TEXTURE	ppm	lbs/A	ppm	lbs/A		
3373139	2.71	0.68	0.48	0.37	1	0										
3373140	6.69	1.65	0.38	0.19	1	0										
3373141	0.51	0.26	25.14	40.52	59											
3373142	0.59	0.25	12.16	18.76	27											
3373143	0.81	0.36	43.87	57.36	84											
3373144	54.06	19.87	7.17	1.18	1	0										

## SUGGESTED FERTILIZER RECOMMENDATIONS

LAB NUMBER	FIELD IDENTIFICATION	SAMPLE IDENTIFICATION	CROP TO BE GROWN	YIELD GOAL	N	P2O5	K2O	S	Zn	MgO	Fe	Mn	Cu	B	Cl	LIME REC 60% ECCE T/A
3373139	BACKGROUND NORTH															
3373140	BACKGROUND SOUTH															
3373141	WPSB															
3373142	WPSS															
3373143	CENTER BERM CB															
3373144	CENTER SURFACE CS															

Approved By: Bob Olsen

Analysis By: American Agricultural Lab

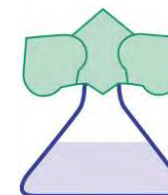
Recommendations By: American Agricultural Lab

# American Agricultural Laboratory, Inc.

700 West D Street / PO Box 370 / McCook, Nebraska 69001

Office: 308-345-3670 / FAX: 308-345-7880

www.AmAgLab.com



20423

DC DOZER SERVICE

1403 FILLMORE ST

STERLING CO 80751

NAME : TODD TROUTMAN

DATE RECEIVED: 12/08/2021

DATE REPORTED: 12/13/2021

## SOIL TEST RESULTS

LAB NUMBER	FIELD IDENTIFICATION	SAMPLE IDENTIFICATION	Depth Inches	pH		EL	SOLUBLE SALTS mod. SP mmhos/cm	OM LOI %	NITRATE-N (FIA)		PHOSPHORUS				
				1 : 1 Soil	Buffer Woodruff				ppm	lbs/A	P1 ppm	Bicarb ppm	P2 ppm	M2 ppm	M3 ppm
3373145	WPWB		0-8												
3373146	WPWS		0-8												
3373147	WPNB		0-8												
3373148	WPNS		0-8												
3373149	EPSB		0-8												
3373150	EPSS		0-8												

LAB NUMBER	SULFATE-S Ca-P ppm	NH4OAc (Exchangeable)				DTPA				BORON Sorbitol ppm	EST. CATION EXCHANGE CAPACITY (CEC) me/100g	% SATURATION					
		K ppm	Ca ppm	Mg ppm	Na ppm	Zn ppm	Fe ppm	Mn ppm	Cu ppm			BASE	H	Ca	Mg	K	Na
3373145										2.4							
3373146										5.2							
3373147										1.1							
3373148										0.8							
3373149										2.4							
3373150										2.6							

LAB NUMBER	SOLUBLE (SAT. EXT.)			SODIUM ADSORPTION RATIO (SAR)	EXCH. SODIUM PERCENT (ESP)	GYPSUM REQ T/A	PARTICLE SIZE ANALYSIS				CHLORIDE		EXCH. NH4-N		ALUMINUM ppm	TOTAL N %
	Ca me/L	Mg me/L	Na me/L				SAND %	SILT %	CLAY %	SOIL TEXTURE	ppm	lbs/A	ppm	lbs/A		
3373145	7.56	4.85	44.75	17.96	25											
3373146	0.61	0.30	41.21	61.09	90											
3373147	10.34	3.71	35.70	13.47	19											
3373148	17.88	8.91	18.15	4.96	6	0										
3373149	1.18	0.49	19.77	21.64	31											
3373150	2.21	0.95	22.13	17.61	25											

## SUGGESTED FERTILIZER RECOMMENDATIONS

LAB NUMBER	FIELD IDENTIFICATION	SAMPLE IDENTIFICATION	CROP TO BE GROWN	YIELD GOAL	N	P2O5	K2O	S	Zn	MgO	Fe	Mn	Cu	B	Cl	LIME REC 60% ECCE T/A
3373145	WPWB															
3373146	WPWS															
3373147	WPNB															
3373148	WPNS															
3373149	EPSB															
3373150	EPSS															

Approved By: Bob Olsen

Analysis By: American Agricultural Lab

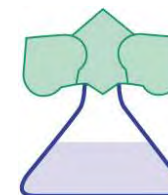
Recommendations By: American Agricultural Lab

# American Agricultural Laboratory, Inc.

700 West D Street / PO Box 370 / McCook, Nebraska 69001

Office: 308-345-3670 / FAX: 308-345-7880

www.AmAgLab.com



20423

DC DOZER SERVICE

1403 FILLMORE ST

STERLING CO 80751

NAME : TODD TROUTMAN

DATE RECEIVED: 12/08/2021

DATE REPORTED: 12/13/2021

## SOIL TEST RESULTS

LAB NUMBER	FIELD IDENTIFICATION	SAMPLE IDENTIFICATION	Depth Inches	pH		EL	SOLUBLE SALTS mod. SP mmhos/cm	OM LOI %	NITRATE-N (FIA)		PHOSPHORUS				
				1 : 1 Soil	Buffer Woodruff				ppm	lbs/A	P1 ppm	Bicarb ppm	P2 ppm	M2 ppm	M3 ppm
3373151	EPEB		0-8												
3373152	EPES		0-8												
3373153	EPNB		0-8												
3373154	EPNS		0-8												

LAB NUMBER	SULFATE-S Ca-P ppm	NH4OAc (Exchangeable)				DTPA				BORON Sorbitol ppm	EST. CATION EXCHANGE CAPACITY (CEC) me/100g	% SATURATION					
		K ppm	Ca ppm	Mg ppm	Na ppm	Zn ppm	Fe ppm	Mn ppm	Cu ppm			BASE	H	Ca	Mg	K	Na
3373151										2.5							
3373152										2.5							
3373153										2.4							
3373154										1.8							

LAB NUMBER	SOLUBLE (SAT. EXT.)			SODIUM ADSORPTION RATIO (SAR)	EXCH. SODIUM PERCENT (ESP)	GYPSUM REQ T/A	PARTICLE SIZE ANALYSIS				CHLORIDE		EXCH. NH4-N		ALUMINUM ppm	TOTAL N %
	Ca me/L	Mg me/L	Na me/L				SAND %	SILT %	CLAY %	SOIL TEXTURE	ppm	lbs/A	ppm	lbs/A		
3373151	0.42	0.20	21.89	39.32	57											
3373152	0.64	0.27	8.77	13.00	18											
3373153	0.74	0.30	26.65	36.96	54											
3373154	0.70	0.35	20.21	27.89	40											

## SUGGESTED FERTILIZER RECOMMENDATIONS

LAB NUMBER	FIELD IDENTIFICATION	SAMPLE IDENTIFICATION	CROP TO BE GROWN	YIELD GOAL	N	P2O5	K2O	S	Zn	MgO	Fe	Mn	Cu	B	Cl	LIME REC 60% ECCE T/A
3373151	EPEB									lbs/A						
3373152	EPES															
3373153	EPNB															
3373154	EPNS															

Approved By: Bob Olsen

Analysis By: American Agricultural Lab

Recommendations By: American Agricultural Lab

## Exhibit B