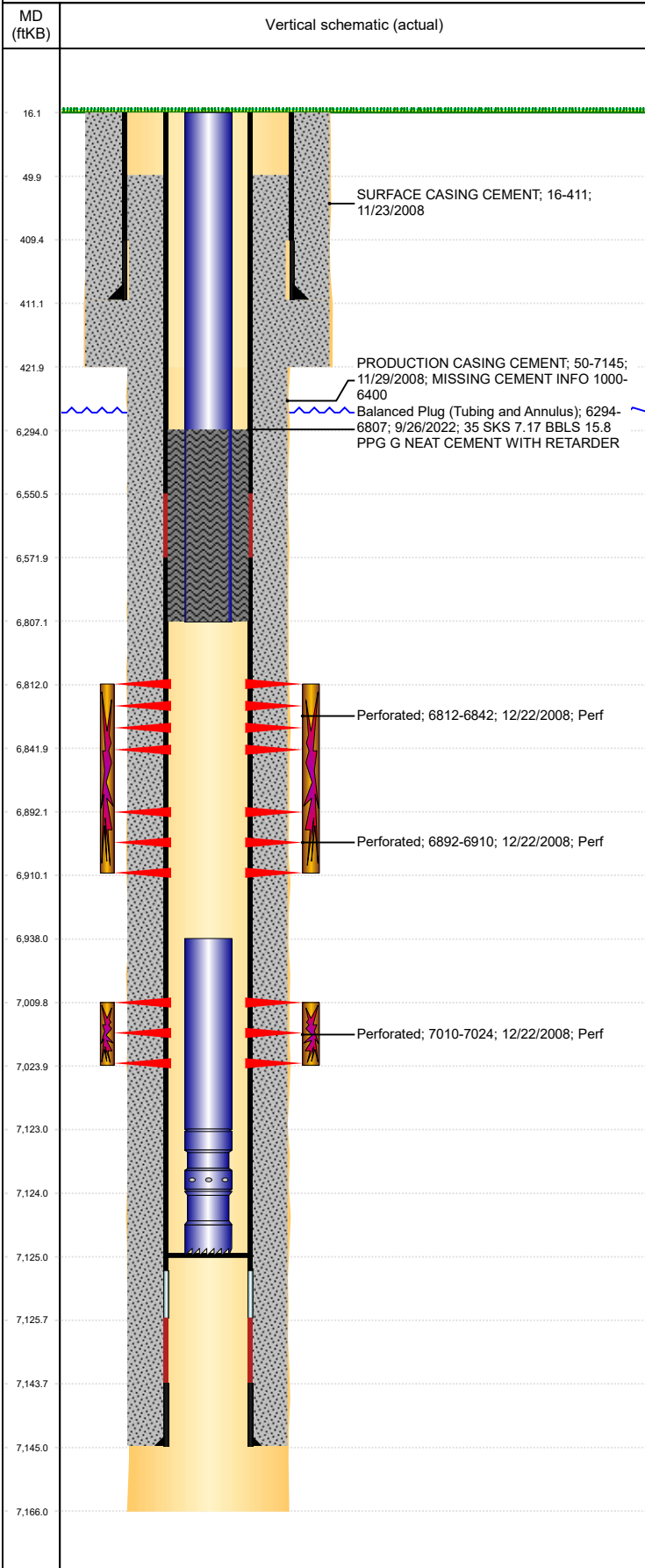




P&A Wellbore For State

Well Name: ZABKA 2-24

Land, Original Hole, 10/10/2022 12:24:47 PM



Well Header

Surface UWI 0512328026	Business Unit Rockies	Gov Auth Dist	Prod Tree Loc Land
Orig. KB to Gnd (ft) 16.00	Original Spud Date 11/22/2008	Abandon Date	Well Sub-Status TA
High... N			

Comment
CEMENT BASKETS @ 5072.77', 4954.18', & 4534.39'. FIELD OPS NOTICE-FLOWLINES ABANDONED, RCVD 6/29/17

Surface Location (Congressional)

Qtr 3 SE	Qtr 4 NW	Section 2	Twnshp 5	Twnsh... N	Range 65	Rng E/... W	Latitude (°) 40.43126	Longitude (°) -104.63344
-------------	-------------	--------------	-------------	---------------	-------------	----------------	--------------------------	-----------------------------

Wellbore Sections

Section Des	Hole Size (in)	Act Top (ftKB)	Act Btm (ftKB)
SURFACE	12 1/4	16.0	422.0
PRODUCTION	7 7/8	422.0	7,166.0

Casing Strings

Csg Des	Run Date	OD (in)	Wt/Len (lb/ft)	Grade	Top Depth (MD) (ftKB)	Set Depth (MD) (ftKB)
Surface	11/23/2008	8 5/8	24.00	M-80	16	411
Production Casing	11/29/2008	4 1/2	11.60	M-80	16	7145

Cement

Des	Start Date	Top (ftKB)	Btm (ftKB)
SURFACE CASING CEMENT	11/23/2008	16.0	411.0
PRODUCTION CASING CEMENT	11/29/2008	50.0	7,145.0
Balanced Plug (Tubing and Annulus)	9/26/2022	6,294.0	6,807.0

Zone Statuses

Zone Name	Status Date	Status	Fluid Type	Job	Prod Method
CODELL	6/9/2011	PR		Abandon Well - Temporary, 9/22/2022 08:30	Flowing
CODELL	9/26/2022	Closed			Flowing
NIOBRARA	6/9/2011	PR		Abandon Well - Temporary, 9/22/2022 08:30	Flowing
NIOBRARA	9/26/2022	Closed			Flowing

Perforation Data

Linked Zone	Explosive Type	Entered Shot Total	Top (ftKB)	Btm (ftKB)	Date
NIOBRARA, Original Hole	B	60	6,812.0	6,842.0	12/22/2008
NIOBRARA, Original Hole	C	72	6,892.0	6,910.0	12/22/2008
CODELL, Original Hole		56	7,010.0	7,024.0	12/22/2008

Stimulation Intervals

Zone	Start Date	Top (ftKB)	Btm (ftKB)
NIOBRARA, Original Hole	12/24/2008	6,812.0	6,910.0
CODELL, Original Hole	12/24/2008	7,010.0	7,024.0

Other In Hole

Run Date	Des	Make	OD (in)	Top (ftKB)	Btm (ftKB)

Logs

Date	Type	Depth Top (MD) (ftKB)	Btm (ftKB)
11/29/2008	COMPENSATED DENSITY	3,570	7,147.0
11/29/2008	INDUCTION	411	7,167.0
12/18/2008	CBL/CCL/GR	16	7,107.0

Plug Back Total Depths

Date	Type	Com	PBTD (ftKB)
12/18/2008	FILL	DEPTH LOGGER ON CBL	7,109
7/9/2009	FILL	CLEAN OUT TO LAND TUBING	7,125