

Inspection Photos and Issue Report

10/11/2022

Operator: LARAMIE ENERGY LLC - 10433 /
BLACK HILLS PLATEAU PRODUCTION LLC

#10150

Location #312420

Mesa County, CO

Aaron Trujillo
NW Reclamation Specialist
COGCC

Inspection Photos

Operator Name: LARAMIE ENERGY LLC - 10433 / BLACK HILLS PLATEAU PRODUCTION LLC #10150

Location #312420



Photo 1: Aerial imagery of Location dated 10/11/2022 taken with use of a sUAS. Image shows overview of the Location and access road; final reclamation has not been conducted in accordance with 1004 requirements.



Photo 2: Image a 3-D model of the Location and access road. Model shows final reclamation including, but not limited to, recontouring/regrading of the Location and access road has not been conducted in accordance with 1004 requirements .

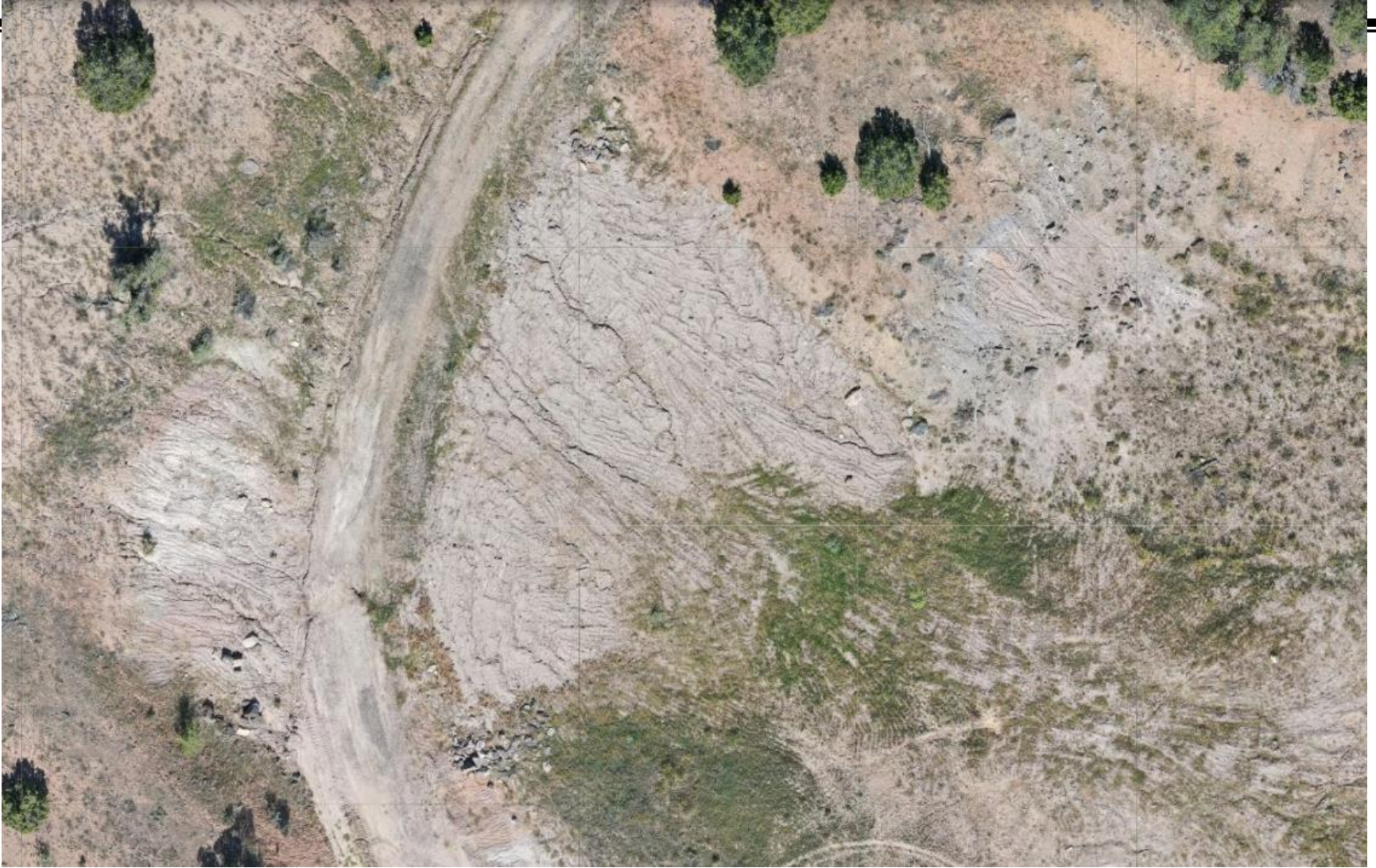


Photo 3: 10/11/2022 aerial imagery showing cut slopes- erosion degradation evident through cut and fill slopes of the Location.

Inspection Photos

Operator Name: LARAMIE ENERGY LLC - 10433 / BLACK HILLS PLATEAU PRODUCTION LLC #10150

Location #312420



October 11, 2022



October 11, 2022

Photo 4: Photos 4-5 taken from the southwest end of the Location. Photos provide an overview of the Location from northwest, north, northeast to southeast. Photos show Location has not been recontoured, regraded and reclaimed in accordance with COGCC 1004 requirements.

Inspection Photos

Operator Name: LARAMIE ENERGY LLC - 10433 / BLACK HILLS PLATEAU PRODUCTION LLC #10150

Location #312420



October 11, 2022



October 11, 2022

Photo 5: See comments under photo 4.



Inspection Photos

Operator Name: LARAMIE ENERGY LLC - 10433 / BLACK HILLS PLATEAU PRODUCTION LLC #10150

Location #312420



Photo 6: Photo shows erosion degradation at the cut slopes of the Location. BMPs to manage stormwater runoff missing or insufficient on the Location

Inspection Photos

Operator Name: LARAMIE ENERGY LLC - 10433 / BLACK HILLS PLATEAU PRODUCTION LLC #10150

Location #312420



October 11, 2022

Photo 7: See comments under photo 6.

Inspection Photos

Operator Name: LARAMIE ENERGY LLC - 10433 / BLACK HILLS PLATEAU PRODUCTION LLC #10150

Location #312420



Photo 8: Photos taken from the east end of the Location, facing southwest and northwest. Photos show cut (photo right) and fill (photo left) slope remaining- Location has not been reclaimed.

Inspection Photos

Operator Name: LARAMIE ENERGY LLC - 10433 / BLACK HILLS PLATEAU PRODUCTION LLC #10150

Location #312420



Photo 9: Photo shows welded plate representing the well marker left at the surface. Rules at time of plugging required permanent monuments marking well at surface was required to be a piece of pipe not less than 4 inches in diameter and not less than 10 feet in length, of which 4 feet shall be above the general ground level; monument left at surface does not comport with abandoned well marker requirements.

Inspection Photos

Operator Name: LARAMIE ENERGY LLC - 10433 / BLACK HILLS PLATEAU PRODUCTION LLC #10150

Location #312420



Photo 10: Photos examples showing access road has not been recontoured, regraded and reclaimed; gravel/road base remains evident. Photo shows stormwater erosion degradation issues also apparent.