

Habel A #1

(API #001-06571)

319732

FIELD NAME LONGBRANCH - #51449

Spud Date 8/26/1972

Basin DENVER - JULESBURG

Location SENW 22 2S62W 5

Elevation 5146' GL

Elevation 5154' KB

TD 7250'

PBTD 7214'

Formation Tops

UPPER ARAPAHOE - 48'

FOX HILLS TOP - 736'

FOX HILLS BASE - 934'

Base of Upper Pierre - 2050'

HYGIENE - 4084

NIOBRARA - 6276'

FORT HAYS - 6656'

CARLILE - 6697'

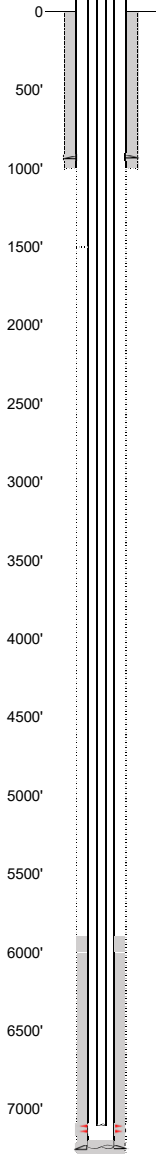
GREENHORN - 6742'

BENTONITE 6971'

D SAND - 7055'

J SAND - 7116'

EXISTING



Existing Casing and Cement Coverage

SURF: Size: 8.625", Hole Size: 12.25 in.
Depth: 947 ft., Weight: 24
Cement: 700 sx, Top: 0 ft., Method: Vis
Deepest DWR w/in 1 mi. = 477'

FOX HILLS TOP - 736'

FOX HILLS BASE - 934'

1ST, Size: 5.5", Hole Size: 7.875"
Depth: 7249', Weight: 15.5
Cement: 200 sx, TOC: 5925', Method: Calc.

Base of Upper Pierre - 2050'

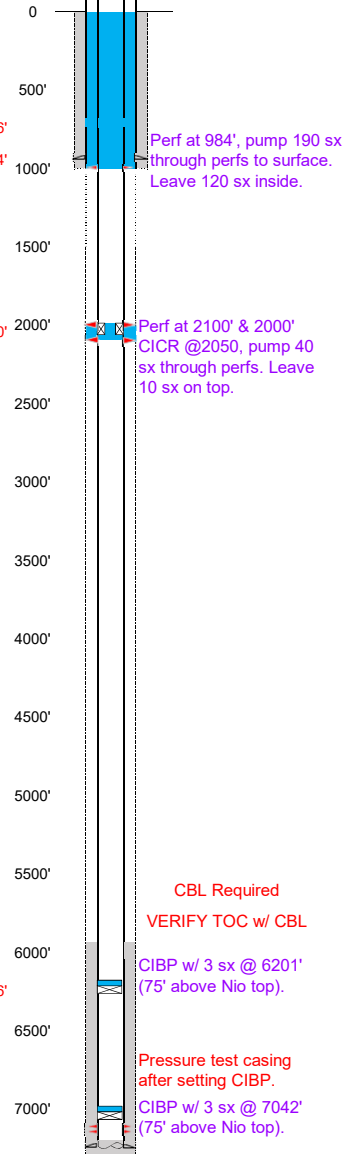
TOC=5925' (Calc)

NIOBRARA - 6276'

2-7/8" tubing set at 7100'
J Sand Perfs 7117'-7166'
PBTD=7214'
TD=7250'

PROPOSED

Depth Plug Placement



Perf at 984', pump 190 sx
through perfs to surface.
Leave 120 sx inside.

Perf at 2100' & 2000'
CICR @2050, pump 40
sx through perfs. Leave
10 sx on top.

CBL Required
VERIFY TOC w/ CBL

CIBP w/ 3 sx @ 6201'
(75' above Nio top).

Pressure test casing
after setting CIBP.

CIBP w/ 3 sx @ 7042'
(75' above Nio top).