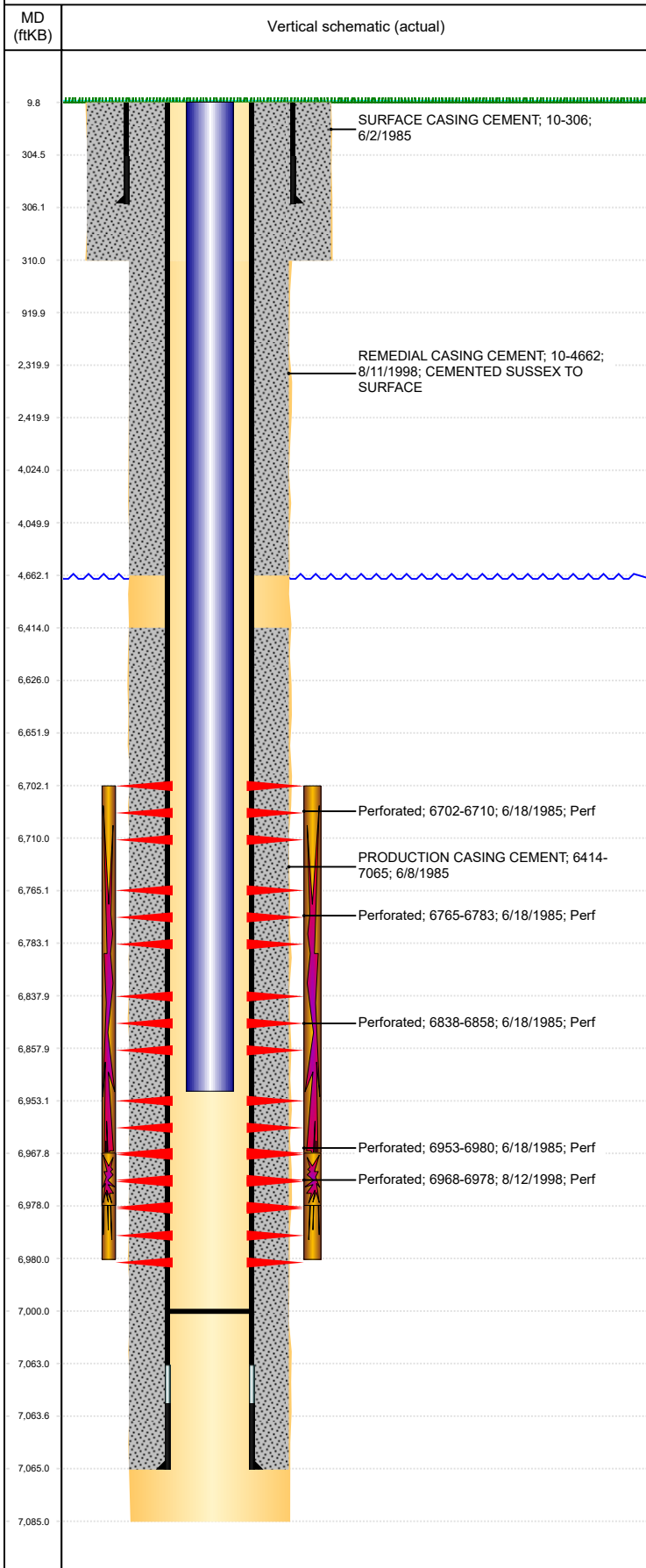




P&A Wellbore For State

Well Name: JOHNSON 29-1

Land, Original Hole, 10/11/2022 3:07:28 PM



Well Header									
Surface UWI 0512312458			Business Unit Rockies			Gov Auth Dist		Prod Tree Loc Land	
Orig. KB to Gnd (ft) 10.00		Original Spud Date 6/1/1985		Abandon Date		Well Sub-Status PR			High... N
Comment LIMITED ENTRY. DISCREP IN TD: DRL RPT 7085', ST RPT 7075', USED DRL RPT TD. LITTLE INFO ON 2006 TUBING REPAIR, USED SIZE FROM 2004 TUBING. CODELL REFRAC - SCREENED OUT AFTER 308000# & 117000 GAL. CD TRIFRAC DEPTHS GIVEN ON TREATMENT RPT INCORRECT, USED REFRAC DEPTHS. FIELD OPERATIONS NOTICE - FLOWLINES ABANDONED PER RULE 1103, RCVD 6/28/17. STATE SHOWS SHUT IN SINCE MAY 2017.									
Surface Location (Congressional)									
Qtr 3 NE	Qtr 4 NE	Section 29	Twtnshp 4	Twtnsh... N	Range 64	Rng E... W	Latitude (°) 40.28882	Longitude (°) -104.56711	
Wellbore Sections									
Section Des			Hole Size (in)			Act Top (ftKB)		Act Btm (ftKB)	
SURFACE			12 1/4			10.0		310.0	
PRODUCTION			7 7/8			310.0		7,085.0	
Casing Strings									
Csg Des			Run Date		OD (in)	Wt/Len (lb/ft)	Grade	Top Depth (MD) (ftKB)	Set Depth (MD) (ftKB)
Surface			6/2/1985		8 5/8	24.00	J-55	10	306
Production Casing			6/8/1985		4 1/2	11.60	N-80	10	7065
Cement									
Des					Start Date		Top (ftKB)		Btm (ftKB)
SURFACE CASING CEMENT					6/2/1985		10.0		306.0
PRODUCTION CASING CEMENT					6/8/1985		6,414.0		7,065.0
REMEDIAL CASING CEMENT					8/11/1998		10.0		4,662.0
Zone Statuses									
Zone Name		Status Date	Status	Fluid Type	Job			Prod Method	
CODELL		8/23/1998	PR		RE-FRAC, 8/8/1998 00:00			Flowing	
CODELL		4/18/2004	PR		TRI-FRAC, 4/8/2004 00:00			Flowing	
NIOBRARA		7/2/1985	PR		DRILLING/COMPLETION - ORIGINAL, 6/1/1985...			Flowing	
Perforation Data									
Linked Zone			Explosive Type	Entered Shot Total	Top (ftKB)		Btm (ftKB)		Date
NIOBRARA, Original Hole			A	3	6,702.0		6,710.0		6/18/1985
NIOBRARA, Original Hole			B	4	6,765.0		6,783.0		6/18/1985
NIOBRARA, Original Hole			C	3	6,838.0		6,858.0		6/18/1985
CODELL, Original Hole				6	6,953.0		6,980.0		6/18/1985
CODELL, Original Hole				40	6,968.0		6,978.0		8/12/1998
Stimulation Intervals									
Zone				Start Date		Top (ftKB)		Btm (ftKB)	
NIOBRARA-CODELL, Original Hole				6/21/1985		6,702.0		6,980.0	
CODELL, Original Hole				4/15/2004		6,968.0		6,978.0	
CODELL, Original Hole				8/19/1998		6,968.0		6,978.0	
Other In Hole									
Run Date		Des			Make		OD (in)	Top (ftKB)	Btm (ftKB)
Logs									
Date		Type					Depth Top (MD) (ftKB)		Btm (ftKB)
6/6/1985		COMPENSATED DENSITY					300		7,093.0
6/6/1985		INDUCTION					300		7,093.0
6/13/1985		CEMENT BOND					6,300		6,908.0
6/11/2020		GYRO					1		6,900.0
Plug Back Total Depths									
Date		Type			Com				PBTD (ftKB)
6/13/1985		FILL			DEPTH LOGGER ON CBL				6,911
8/13/2006		FILL			BAIL SAND TO 7000'				7,000