

**HABEL 'B' #1**

(API #001-06615)

Loc. #319740

FIELD NAME LONGBRANCH - #51450

Spud Date 12/1/1972

Basin DENVER - JULESBURG

Location SWNW 23 2S62W 6

Elevation 5120' GL

TD 7189'

PBTD 7140'

**Formation Tops**

UPPER ARAPAHOE - 26'

FOX HILLS TOP - 698'

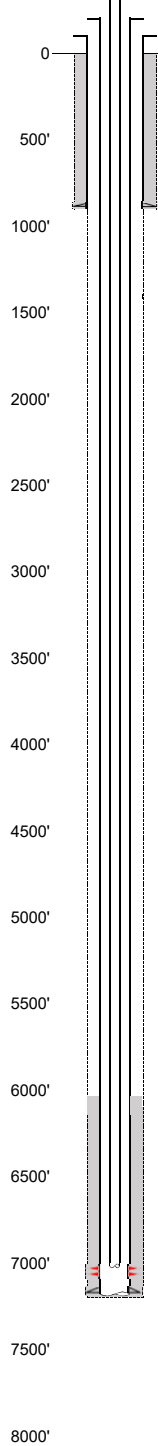
FOX HILLS BASE - 891'

Base of Upper Pierre - 2180'

NIOBRARA - 6180'

FORT HAYS - 6560'  
CARLILE - 6597'  
GREENHORN - 6677'  
BENTONITE - 6883'  
D SAND - 6977'  
J SAND - 7040'

**EXISTING**



**Existing Casing and Cement Coverage**

SURF: Size: 8.625", Hole Size: 12.25 in.  
Depth: 891 ft., Weight: 24  
Cement: 600 sx, Top: 0 ft., Method: Vis

Deepest DWR w/in 1 mi. = 477'

FOX HILLS TOP - 698'

FOX HILLS BASE - 891'

1ST, Size: 5.5", Hole Size: 7.875"  
Depth: 7186', Weight: 15.5  
Cement: 200 sx, TOC: 6030', Method: CALC

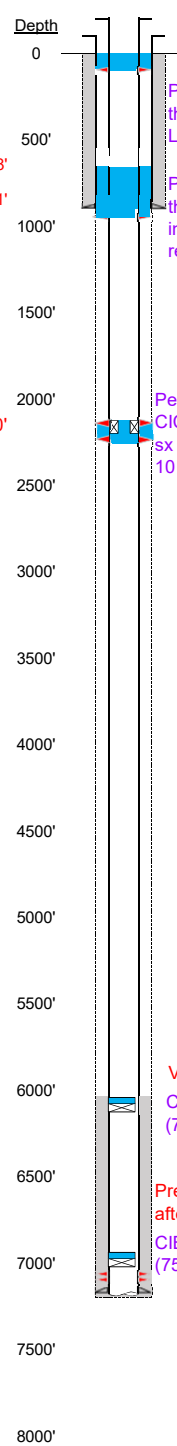
Base of Upper Pierre - 2180'

TOC=6030' (CALC)

NIOBRARA - 6180'

2-7/8" tubing set at 7013'  
J Sand Perfs 7040'-7058'  
PBTD=7140'  
TD=7189'

**PROPOSED**



**Plug Placement**

Perf at 100'. Pump 27 s  
through perfs to surface  
Leave 8 sx inside to sur

Perf at 941', pump 65 s  
through perfs. Leave 35  
inside. Tag above 648'  
required

Perf at 2230' & 2130'  
CICR @2140, pump 40  
sx through perfs. Leave  
10 sx on top.

CBL Required

VERIFY TOC w/ CBL

CIBP w/ 3 sx @ 6105'  
(75' above NBRR top)  
(75' below TOC)

Pressure test casing  
after setting CIBP.

CIBP w/ 3 sx @ 6965'  
(75' above top perf).