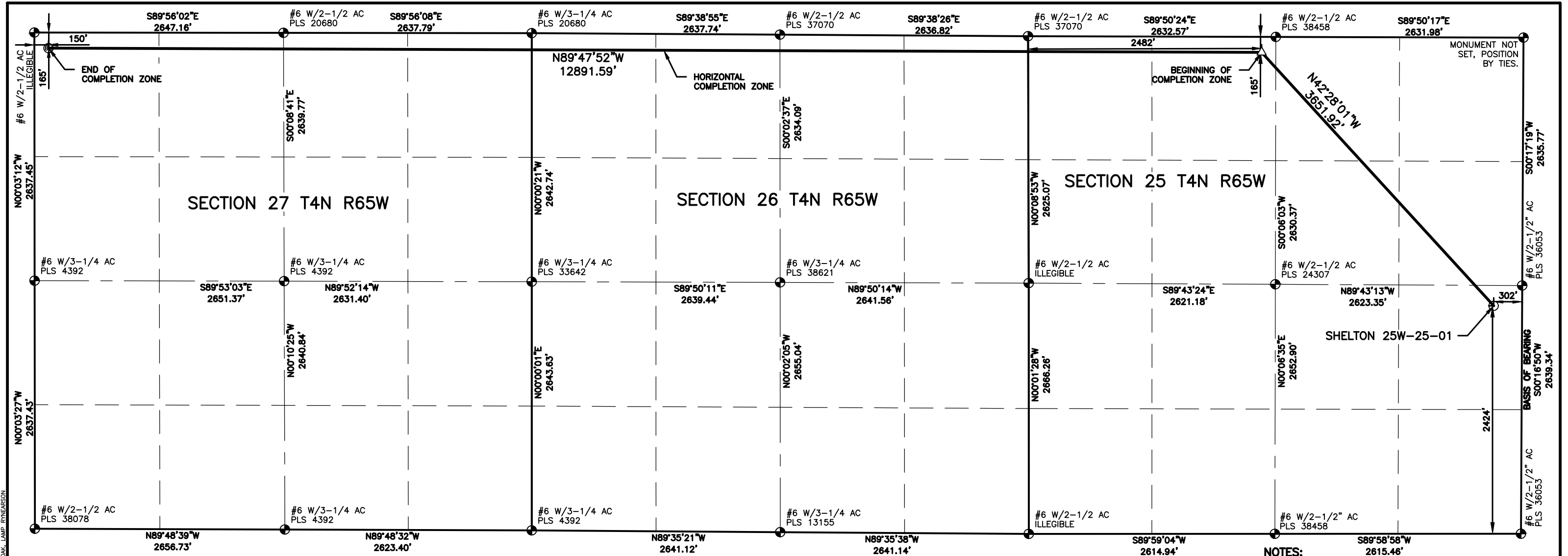
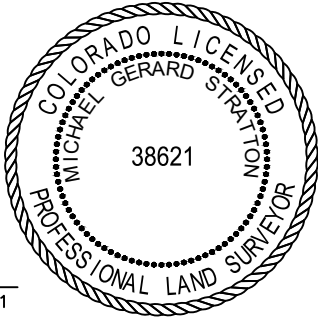


L:\Engineering\0221036 - Shelton\SURVEY\DRAWINGS\EXHIBITS\Well Plots\SHELTON 25W-25-01.dwg, 8/8/2022 2:31:27 PM, JOSHUA A. CROAK, LAMP RYNEARSON



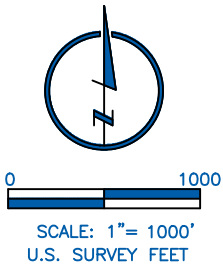
LAND SURVEYOR'S CERTIFICATION
LAMP RYNEARSON, INC. OF FT. COLLINS, COLORADO HAS, IN ACCORDANCE WITH A REQUEST FROM TROY OWENS OF CRESTONE PEAK RESOURCES, DETERMINED THE SURFACE LOCATION OF THE WELL DESIGNATED AS SHELTON 25W-25-01 TO BE 2424' FROM THE SOUTH LINE AND 302' FROM THE EAST LINE OF SECTION 25, TOWNSHIP 4 NORTH, RANGE 65 WEST OF THE 6TH P.M., WELD COUNTY, COLORADO.



MICHAEL GERARD STRATTON COLORADO PLS 38621
DATE OF SURVEY: 2/1/2022 (SECTION CONTROL)
DATE OF SURVEY: 3/22/2022 (WELL LOCATION)

SURFACE POINT				LANDING POINT/BEGIN HORIZONTAL COMPLETION ZONE				BOTTOM HOLE/END HORIZONTAL COMPLETION ZONE			
2424'	FSL	302'	FEL	165'	FNL	2482'	FWL	165'	FNL	150'	FWL

SURFACE POINT					LANDING POINT		BOTTOM HOLE		
LATITUDE	LONGITUDE	ELEVATION	PDOP	OPERATOR	LATITUDE	LONGITUDE	LATITUDE	LONGITUDE	
40.282618	-104.603388	4836	4.013	A.CAUWELS	40.290017	-104.612217	40.290153	-104.658416	



- LEGEND**
- | | | | |
|-----------------|-------------------------|----------|------------------------------|
| ◆ | COMPUTED ALIQUOT CORNER | ⊙ | PROPOSED WELL |
| ⊕ | ALIQUOT CORNER | A.C. | ALUMINUM CAP |
| ⊗ | BOTTOM HOLE | R.B. | RANGE BOX |
| ⊕ ^{WC} | ALIQUOT WITNESS CORNER | CONC. | CONCRETE |
| △ | LANDING POINT | I.C.V.B. | IRRIGATION CONTROL VALVE BOX |

- NOTES:**
- DISTANCES ARE MEASURED PERPENDICULAR TO NEAREST SECTION LINE AND ARE SHOWN ON THE SAME SIDE OF THE SECTION LINE WHERE THE WELL IS LOCATED.
 - THIS MAP DOES NOT REPRESENT A MONUMENTED BOUNDARY SURVEY. SIXTEENTH CORNER LOCATIONS ARE COMPUTED, UNLESS OTHERWISE NOTED.
 - BOTTOM HOLE LOCATIONS AND HORIZONTAL COMPLETION ZONE PROVIDED BY OTHERS.
 - ALL REBAR AND CAPS ARE MEASURED IN INCHES.
 - ELEVATIONS ARE BASED ON THE NORTH AMERICAN VERTICAL DATUM OF 1988 AS MEASURED BY GNSS OBSERVATIONS USING GEOID 18.

BASIS OF BEARING:
THE EAST LINE OF THE SOUTHEAST QUARTER OF SECTION 25-T4N-R65W BEARS S00°16'50"W FOR A DISTANCE OF 2639.34' FEET BETWEEN THE EAST QUARTER CORNER OF SECTION 25 MONUMENTED WITH A #6 REBAR WITH A 2-1/2" ALUMINUM CAP STAMPED "PLS 36053" AND THE SOUTHEAST CORNER OF SECTION 25, MONUMENTED WITH A #6 REBAR WITH A 2-1/2" ALUMINUM CAP STAMPED "PLS 36053", BASED ON A LOW DISTORTION PROJECTION DEVELOPED BY LAMP RYNEARSON USING THE NORTH AMERICAN DATUM OF 1983(2011).

LAMP RYNEARSON

4715 INNOVATION DR., STE. 100
FORT COLLINS, CO 80525
970.226.0342
LampRynearson.com

CRESTONE PEAK
RESOURCES

DESIGNER / DRAFTER
J.CROAK

REVIEWER
M.STRATTON

PROJECT NUMBER
0221036.01

DATE
08/08/2022

SURFACE LOCATION
NE/4, SE/4, S25, T4N, R65W

BOOK AND PAGE

WELL LOCATION PLAT

SHELTON 25W-25-01