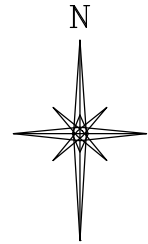


R. 54 W.

**STATE 35
NENW 2954**
UNGRADED ELEVATION:
5279.7'

35
PROTRACTED SECTION



GRID NORTH
SCALE' 1" = 1000'
500' 0 1000'
T. 29 S.

SHL
LATITUDE (NAD 83)
NORTH 37.479770 DEG.
LONGITUDE (NAD 83)
WEST 103.433110 DEG.
NORTHING (NAD 83)
1302701.28
EASTING (NAD 83)
3599715.15

**BASIS OF BEARINGS,
ELEVATIONS & DATUM**

SPCS COLORADO SOUTH NAD 27 BASED
ON GPS OBSERVATIONS AND OPUS
SOLUTION ON 1 1/2 IN. ALUM. CAP ON
No. 5 REBAR DRG CONTROL POINTS
"CP 21 3054" HAVING A NAD83(2011)
POSITION OF:
LAT 37° 25' 14.50" NORTH
LONG 103° 27' 47.69" WEST
NAVD88 ELEVATION: 5538.59'
"CP 35 2954" HAVING A NAD83(2011)
POSITION OF:
LAT 37° 28' 39.68" NORTH
LONG 103° 26' 15.82" WEST
NAVD88 ELEVATION: 5309.79'

BEARINGS HEREIN RELATIVE TO GRID
BEARING BETWEEN SAID POINTS:
N18°23'17"E

NOTES

1. GPS OPERATOR T. SHERRILL OBSERVED A PDOP OF 1.5.
2. ALL GPS OBSERVATIONS ARE IN COMPLIANCE WITH COGCC RULE No.215.
3. EXISTING IMPROVEMENTS WITHIN 500' OF LOCATION. SEE LOC. DRAWING.
4. SURROUNDING SURFACE USE IS NATIVE BRUSH, NON CROP RANGELAND.

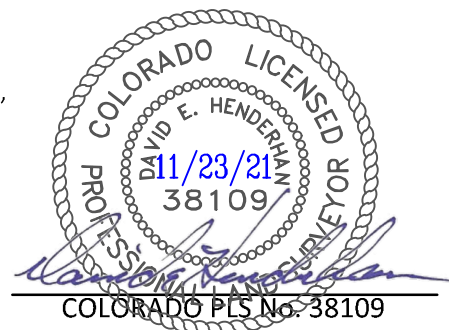
- LEGEND**
- ◆ WELL LOCATION
 - └ DENOTES 90° TIE
 - PROTRACTED QUADRANGLE INTERSECTION LOCATION

SURVEYOR'S STATEMENT

I, DAVID E. HENDERHAN, AN EMPLOYEE AND AGENT ON BEHALF OF D.R. GRIFFIN & ASSOCIATES, INC. STATE THE PLAT HEREON IS A CORRECT REPRESENTATION OF A SURVEY MADE UNDER MY SUPERVISION ON THE 5th DAY OF JULY, 2021 OF THE SHOWN STATE 35 NENW 2954 AND THAT THE LOCATION HAS BEEN STAKED ON THE GROUND AS SHOWN ON THIS PLAT.

Notice: In accordance with Colorado State Law, any legal action based upon any defect in this survey plat must commence within three (3) years after first discovery of such defect. In no event, may any action based upon any defect in this survey plat be commenced more than ten (10) years from the date of certification shown hereon.

STATE 35 NENW 2954



DRG **RIFFIN & ASSOCIATES, INC.**
(307) 362-5028 1414 ELK ST., ROCK SPRINGS, WY 82901

DRAWN: 7/21/2021 - DEH	SCALE: 1" = 1000'
REVISED: 11/22/21 - JMB	DRG JOB No. 22136
REVISED COMPANY NAME	EXHIBIT A

**PLAT OF DRILLING LOCATION IN
NENW, SECTION 35, FOR
BNL (ENTERPRISE) INC.**

**963' F/NL, & 1677' F/WL, SECTION 35,
T. 29 S., R. 54 W., 6TH P.M.,
LAS ANIMAS COUNTY, COLORADO**