

R. 54 W.

**STATE 16
SWSE 3054
UNGRADED ELEVATION:
5506.0'**

16

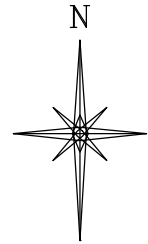
PROTRACTED SECTION

LEGEND

- ◆ WELL LOCATION
- └ DENOTES 90° TIE
- PROTRACTED QUADRANGLE INTERSECTION LOCATION

999'
2233'

551°43'28"W 2087.61'
TO DRG CP 21 3054



GRID NORTH
SCALE' 1" = 1000'
500' 0 1000'

T. 30 S.

SHL
LATITUDE (NAD 83)
NORTH 37.426963 DEG.
LONGITUDE (NAD 83)
WEST 103.465100 DEG.
NORTHING (NAD 83)
1283274.42
EASTING (NAD 83)
3590853.40

**BASIS OF BEARINGS,
ELEVATIONS & DATUM**

SPCS COLORADO SOUTH NAD 27 BASED
ON GPS OBSERVATIONS AND OPUS
SOLUTION ON 1½IN. ALUM. CAP ON
No. 5 REBAR DRG CONTROL POINTS
"CP 21 3054" HAVING A NAD83(2011)
POSITION OF:
LAT 37° 25' 14.50" NORTH
LONG 103° 27' 47.69" WEST
NAVD88 ELEVATION: 5538.59'
"CP 35 2954" HAVING A NAD83(2011)
POSITION OF:
LAT 37° 28' 39.68" NORTH
LONG 103° 26' 15.82" WEST
NAVD88 ELEVATION: 5309.79'

BEARINGS HEREIN RELATIVE TO GRID
BEARING BETWEEN SAID POINTS:
N18°23'17"E

NOTES

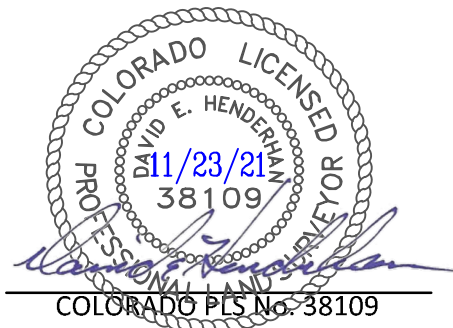
1. GPS OPERATOR T. SHERRILL OBSERVED A PDOP OF 1.7.
2. ALL GPS OBSERVATIONS ARE IN COMPLIANCE WITH COGCC RULE No.215.
3. EXISTING IMPROVEMENTS WITHIN 500' OF LOCATION. SEE LOC. DRAWING.
4. SURROUNDING SURFACE USE IS NATIVE BRUSH, NON CROP RANGELAND.

SURVEYOR'S STATEMENT

I, DAVID E. HENDERHAN, AN EMPLOYEE AND AGENT ON BEHALF OF D.R. GRIFFIN & ASSOCIATES, INC. STATE THE PLAT HEREON IS A CORRECT REPRESENTATION OF A SURVEY MADE UNDER MY SUPERVISION ON THE 4th DAY OF JULY, 2021 OF THE SHOWN STATE 16 SWSE 3054 AND THAT THE LOCATION HAS BEEN STAKED ON THE GROUND AS SHOWN ON THIS PLAT.

Notice: In accordance with Colorado State Law, any legal action based upon any defect in this survey plat must commence within three (3) years after first discovery of such defect. In no event, may any action based upon any defect in this survey plat be commenced more than ten (10) years from the date of certification shown hereon.

STATE 16 SWSE 3054



COLORADO PLS No. 38109



DAVID E. GRIFFIN & ASSOCIATES, INC.
1414 ELK ST., ROCK SPRINGS, WY 82901

(307) 362-5028

DRAWN: 7/20/2021 - DEH

SCALE: 1" = 1000'

REVISED: 11/23/21 - JMB

DRG JOB No. 22139

REVISED COMPANY NAME

EXHIBIT A

**PLAT OF DRILLING LOCATION IN
SWSE, SECTION 16, FOR
BNL (ENTERPRISE) INC.**

**999' F/SL, & 2233' F/EL, SECTION 16,
T. 30 S., R. 54 W., 6TH P.M.,
LAS ANIMAS COUNTY, COLORADO**