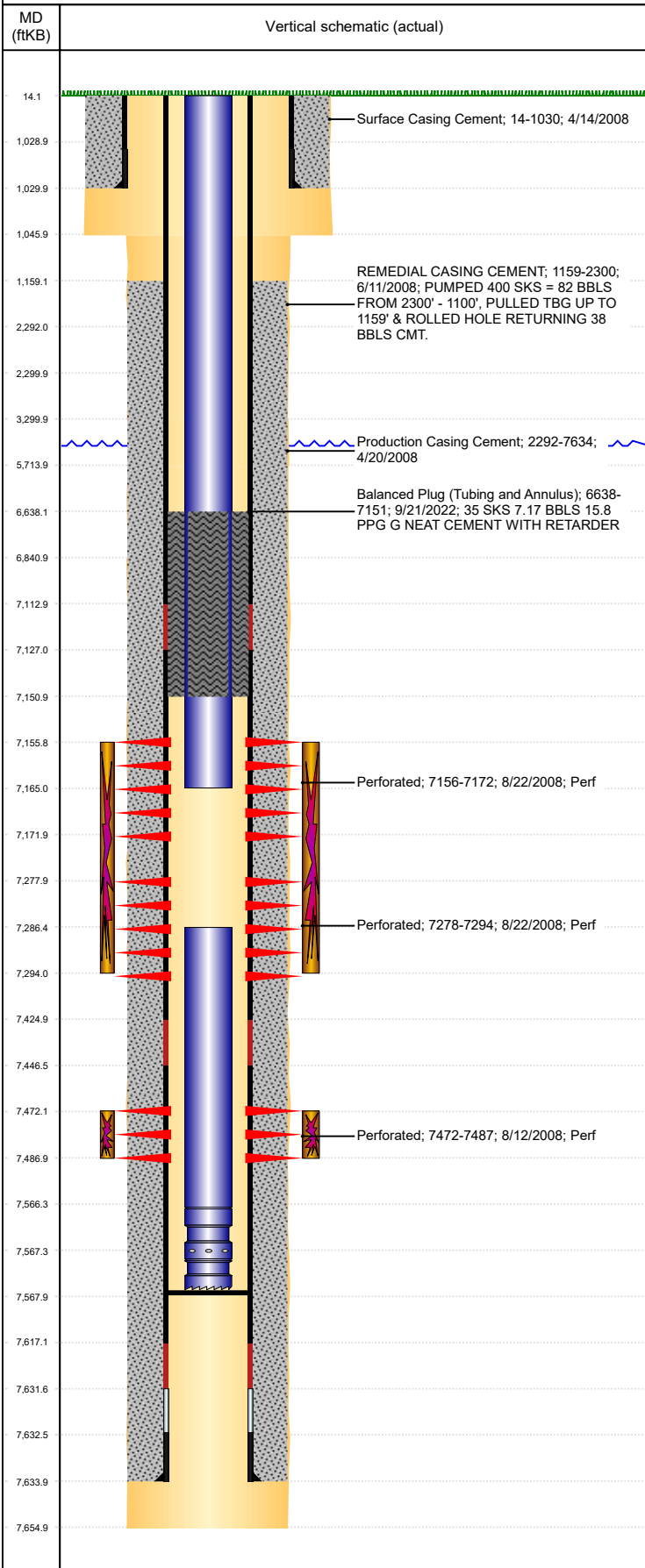




P&A Wellbore For State

Well Name: TOOL G02-29

Land, Original Hole, 10/4/2022 12:07:18 PM



Well Header									
Surface UWI 0512325525		Business Unit Rockies		Gov Auth Dist		Prod Tree Loc Land			
Orig. KB to Gnd (ft) 14.00		Original Spud Date 4/13/2008		Abandon Date		Well Sub-Status TA		High...	
								N	
Comment 318Ae LOCATION									
Surface Location (Congressional)									
Qtr 3 SW	Qtr 4 SE	Section 35	Twonshp 5	Twonsh... N	Range 65	Rng E... W	Latitude (°) 40.34897559 3	Longitude (°) -104.62621267	
Wellbore Sections									
Section Des		Hole Size (in)		Act Top (ftKB)		Act Btm (ftKB)			
SURFACE		12 1/4		14.0		1,046.0			
PRODUCTION		7 7/8		1,046.0		3,300.0			
PRODUCTION		7 7/8		3,300.0		5,714.0			
PRODUCTION		7 7/8		5,714.0		6,841.0			
PRODUCTION		7 7/8		6,841.0		7,655.0			
Casing Strings									
Csg Des		Run Date		OD (in)		Wt/Len (lb/ft)		Grade	
Surface		4/14/2008		8 5/8		24.00		J-55	
Production Casing		4/20/2008		4 1/2		11.60		M-80	
Cement									
Des		Start Date		Top (ftKB)		Btm (ftKB)			
Surface Casing Cement		4/14/2008		14.0		1,030.0			
Production Casing Cement		4/20/2008		2,292.0		7,634.0			
REMEDIAL CASING CEMENT		6/11/2008		1,159.0		2,300.0			
Balanced Plug (Tubing and Annulus)		9/21/2022		6,638.0		7,151.0			
Zone Statuses									
Zone Name		Status Date		Status		Fluid Type		Job	
CODELL		2/25/2010		PR		Water			
CODELL		9/21/2022		Closed				Abandon Well - Temporary, 8/31/2022 00:00	
NIOBRARA		11/29/2016		SI					
NIOBRARA		9/21/2022		Closed				Abandon Well - Temporary, 8/31/2022 00:00	
Perforation Data									
Linked Zone		Explosive Type		Entered Shot Total		Top (ftKB)		Btm (ftKB)	
NIOBRARA, Original Hole				64		7,156.0		7,172.0	
NIOBRARA, Original Hole				64		7,278.0		7,294.0	
CODELL, Original Hole				60		7,472.0		7,487.0	
Stimulation Intervals									
Zone		Start Date		Top (ftKB)		Btm (ftKB)			
NIOBRARA, Original Hole		8/22/2008		7,156.0		7,294.0			
CODELL, Original Hole		8/22/2008		7,472.0		7,487.0			
Other In Hole									
Run Date		Des		Make		OD (in)		Top (ftKB)	
Logs									
Date		Type				Depth Top (MD) (ftKB)		Btm (ftKB)	
4/19/2008		Caliper/Comp. Density/Neutron/GR/SP/ML				2,600		7,632.0	
4/19/2008		DIL/GR/SP/Caliper				1,030		7,652.0	
5/23/2008		Acoustic				0		2,000.0	
5/23/2008		Temperature Survey				0		2,016.0	
5/23/2008		Radial Cement				2,018		7,615.0	
9/22/2013		GYRO				14		7,350.0	
Plug Back Total Depths									
Date		Type		Com		PBTD (ftKB)			
4/20/2008		FLOAT COLLAR				7,632			
1/20/2009		PLUG REMNANTS				7,568			