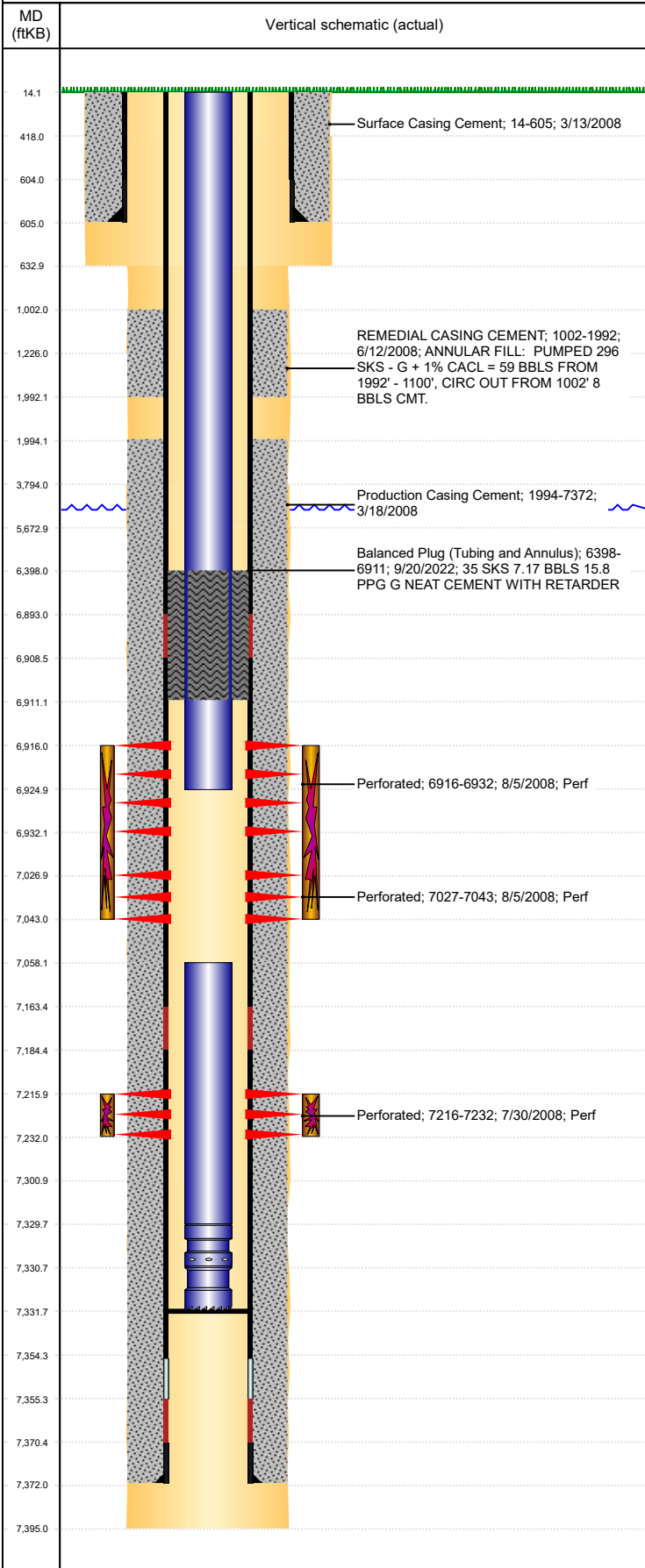




# P&A Wellbore For State

Well Name: TOOL G02-17

Land, Original Hole, 10/4/2022 12:11:35 PM



<b>Well Header</b>		Surface UWI 0512325527		Business Unit Rockies		Gov Auth Dist		Prod Tree Loc Land	
Orig. KB to Gnd (ft) 14.00		Original Spud Date 3/12/2008		Abandon Date		Well Sub-Status TA		High... N	

Comment									
<b>Surface Location (Congressional)</b>									
Qtr 3 SW	Qtr 4 SE	Section 35	Twnshp 5	Twnsh... N	Range 65	Rng E/... W	Latitude (°) 40.34863360	Longitude (°) -104.626210602	

<b>Wellbore Sections</b>			
Section Des	Hole Size (in)	Act Top (ftKB)	Act Btm (ftKB)
SURFACE	12 1/4	14.0	418.0
SURFACE	12 1/4	418.0	633.0
PRODUCTION	7 7/8	633.0	1,226.0
PRODUCTION	7 7/8	1,226.0	3,794.0
PRODUCTION	7 7/8	3,794.0	5,673.0
PRODUCTION	7 7/8	5,673.0	7,301.0
PRODUCTION	7 7/8	7,301.0	7,395.0

<b>Casing Strings</b>						
Csg Des	Run Date	OD (in)	Wt/Len (lb/ft)	Grade	Top Depth (MD) (ftKB)	Set Depth (MD) (ftKB)
Surface	3/13/2008	8 5/8	24.00	J-55	14	605
Production Casing	3/18/2008	4 1/2	11.60	M-80	14.1	7372

<b>Cement</b>			
Des	Start Date	Top (ftKB)	Btm (ftKB)
Surface Casing Cement	3/13/2008	14.0	605.0
Production Casing Cement	3/18/2008	1,994.0	7,372.0
REMEDIAL CASING CEMENT	6/12/2008	1,002.0	1,992.0
Balanced Plug (Tubing and Annulus)	9/20/2022	6,398.0	6,911.0

<b>Zone Statuses</b>					
Zone Name	Status Date	Status	Fluid Type	Job	Prod Method
NIOBRARA	2/4/2010	PR	Water		Flowing
NIOBRARA	9/20/2022	Closed		Abandon Well - Temporary, 8/31/2022 00:00	
CODELL	11/29/2016	SI			
CODELL	9/20/2022	Closed		Abandon Well - Temporary, 8/31/2022 00:00	

<b>Perforation Data</b>					
Linked Zone	Explosive Type	Entered Shot Total	Top (ftKB)	Btm (ftKB)	Date
NIOBRARA, Original Hole	A	64	6,916.0	6,932.0	8/5/2008
NIOBRARA, Original Hole	B	64	7,027.0	7,043.0	8/5/2008
CODELL, Original Hole		64	7,216.0	7,232.0	7/30/2008

<b>Stimulation Intervals</b>			
Zone	Start Date	Top (ftKB)	Btm (ftKB)
NIOBRARA, Original Hole	8/5/2008	6,916.0	7,043.0
CODELL, Original Hole	8/5/2008	7,216.0	7,232.0

<b>Other In Hole</b>					
Run Date	Des	Make	OD (in)	Top (ftKB)	Btm (ftKB)

<b>Logs</b>			
Date	Type	Depth Top (MD) (ftKB)	Btm (ftKB)
5/23/2008	Acoustic	10	2,300.0
5/23/2008	Temperature Survey	0	2,015.0
5/23/2008	Radial Cement	1,728	7,323.0
9/21/2013	GYRO	14	7,100.0

<b>Plug Back Total Depths</b>			
Date	Type	Com	PBTD (ftKB)
3/18/2008	FLOAT COLLAR		7,354
9/22/2008	PLUG REMNANTS	CHASED PLUG REMNANTS TO 7331.70' KB	7,332