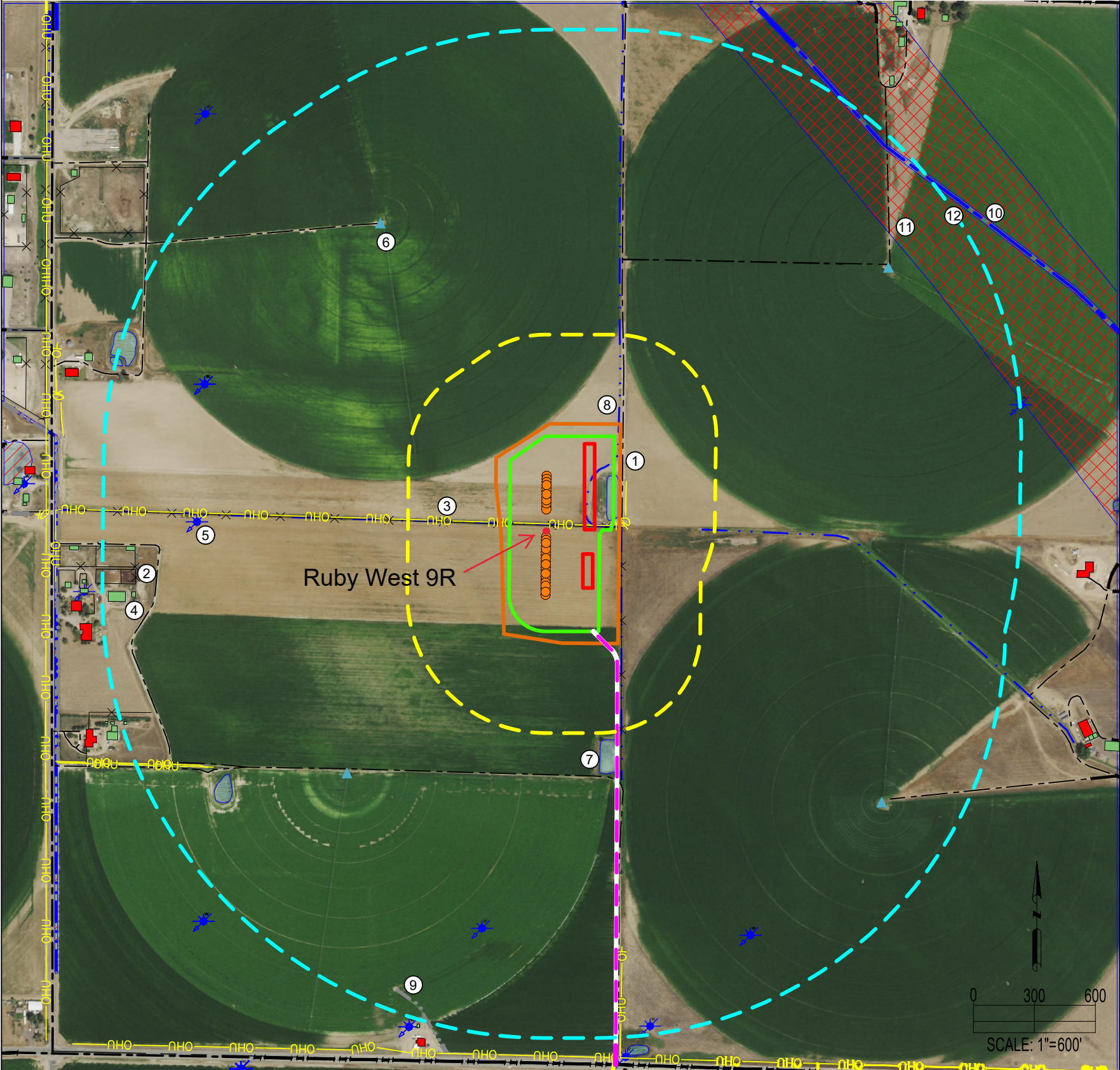


RUBY 7-J PAD
LOCATION DRAWING



IMPROVEMENTS: (AS MEASURED FROM THE PROPOSED WORKING PAD SURFACE)	
1. PRIVATE ROAD:	±1870' NW, ±1334' NW, ±942' N, ±41' E, ±1655' SE, ±705' S, ±1720' W
2. FENCE:	0' (TO BE REMOVED) ±1840' W, ±1836' W, ±1844' SW, ±47' E
3. OVERHEAD UTILITY:	0' (TO BE REMOVED), ±1656' SW
4. BUILDING:	±2020' SW, ±2031' SW, ±1971' SW, ±2023' SW, ±2030' SW, ±2061' SW, ±1837' W, ±1841' W, ±1886' W
5. WATER WELL:	±1549' NW, ±2004' E, ±1670' SE, ±2448' SE, ±1958' S, ±2097' S, ±1490' S, ±2049' S, ±2146' SW, ±1538' W, ±2089' W
6. PIVOT POINT:	±1582' NE, ±1323' NW, ±1133' SW, ±1626' SE
7. POND:	0' (TO BE REMOVED), ±543' S, ±1610' SW, ±1918' NW
8. DITCH:	0' (TO BE REMOVED), 0' (TO BE REMOVED), ±440' E
9. CONCRETE DITCH:	±1897' SW, ±1668' SW
10. STREAM:	±1951' NE
11. FLOODPLAIN:	±1676' NE
12. PERMANENT RIVERINE WETLAND (MAPPED GIS):	±1938' NE

The original Ruby West 9 will be P&A. Well count will remain at 16 wells. 9/30/2022

DATA SOURCE: AERIAL IMAGERY: NAIP 2019 WATER WELLS: COLORADO DWR NHD: USGS	OIL & GAS SURFACE ACREAGE: 13.9 ACRES OIL & GAS LOCATION 10.1 ACRES WORKING PAD SURFACE 11.2 ACRES INTERIM RECLAIM	REFERENCE LOCATION **RUBY WEST 4** LAT: 40.589530° N LONG: 104.707113° W ELEVATION: 4922' 2542' FSL & 2426' FWL PDOP: 1.9 GPS OPERATOR: RYAN DESMOND
---	--	--

DISCLAIMER:
THIS PLOT DOES NOT REPRESENT A MONUMENTED LAND SURVEY AND SHOULD NOT BE RELIED UPON TO DETERMINE BOUNDARY LINES.
PROPERTY OWNERSHIP OR OTHER PROPERTY INTERESTS, PARCEL LINES, IF DEPICTED HAVE NOT BEEN FIELD VERIFIED AND MAY BE BASED
UPON PUBLICLY AVAILABLE DATA THAT ALSO HAS NOT BEEN INDEPENDENTLY VERIFIED.

CURRENT SURFACE USE: IRRIGATED CROP LAND
FUTURE SURFACE USE: IRRIGATED CROP LAND

8620 Wolff Court
Westminster, CO 80031
(303) 928-7128
www.ascentgeomatics.com

FIELD DATE:
04-27-20

DRAWN BY:
JW

DRAWING DATE:
07-23-21

CHECKED BY:
IJM

SITE NAME:
RUBY 7-J PAD

SURFACE LOCATION:
NE 1/4 SW 1/4 SEC. 7, T7N, R65W, 6TH P.M.
WELD COUNTY, COLORADO

LEGEND:

- PROPOSED WELL
- FENCE
- OVERHEAD UTILITY
- DITCH
- PIVOT POINT
- WATER WELL
- CONCRETE DITCH
- PROPOSED ACCESS ROAD
- STREAM
- PRIVATE ROAD
- PUBLIC ROAD
- 2000' RADIUS FROM WPS
- 500' RADIUS FROM WPS
- FLOODPLAIN
- RIVERINE/WETLAND
- BUILDING
- POND
- OIL & GAS LOCATION
- RESIDENTIAL BUILDING UNIT
- PROPOSED FACILITIES
- WORKING PAD SURFACE

PREPARED FOR: