

Cement Verification Report - Cementer's Well Service, Inc.

P.O. BOX 336220 • GREELEY, CO 80633 • (970) 353-7299 • FAX (970) 353-7712



COGCC Operator Guidance RULE #308.A.B(2)A.ii

CLIENT: PDC Energy	Cementer's FIELD TICKET #	300327-D
--------------------	------------------------------	----------

Requested Operator Guidance:

Well Name & Number	Lease	Bernhardt		Well No.	06N
Well API Number	05-123-51134				
Job Date	7/1/22	Time on	19:15	24 hr time	
Job Type	New Well Surface				
Cementing Company	Cementer's Well Service, Inc	Contact	Nate Kvamme - 303-324-4296		
Ambient conditions	clear	68	temp deg F		
Slurry Description					
a) Purpose	Surface - 9 5/8" 36# CSG, 13 1/2" hole				
b) Cement Class	ASTM C150 Type II				
c) Cement Yield	1.61	cuft / sk			
d) Cement Density	13.9	PPG			
e) Number of sks	759	sks (94# equiv)			
f) Mix Fluid Type					
Water / Cement	8.5	Gal / sk			
g) Slurry mixed	217.6	BBLs slurry			
h) Additives used	1.5%	CaCl2	3.0%	Bentonite	
Total Water Used	309.0	BBLs H2O			
i) Displacement Fluid Vol	125.4	BBLs H2O			
j) Method of Placement					
k) Set Depth	1,665	feet (ft)			
l) Stage tool depth	n/a				
m) Float Collar Depth	1,622	feet (ft)			
n) Designed Top of Cement	n/a	to surface			
o) Centralizer depths	0	feet (ft)			

Charts - (pressure, density, pump rate)

Landed Plug @ 1668 psi Final Lift Pressure @ 400 psi

Cement Density (as weighed during job) @ 13.9 PPG

Job notes

a) Plug down	<div><div>Y</div><div>N</div></div>	Time	21:12	24 hr time
b) Floats held	<div><div>Y</div><div>/</div><div>N</div></div>		7/1/22	
c) Full Returns	<div><div>Y</div><div>/</div><div>N</div></div>	Lost Circulation	<div><div>Y</div><div>(N)</div></div>	
d) Cement to surface	<div><div>Y</div><div>/</div><div>N</div></div>	50.0	BBLs to surface	
e) If no returns, top off	n/a	BBLs		
f) Top off detail				
g) Additional Detail				

Cementer's Well Service, Inc.

P.O. BOX 336220 • GREELEY, CO 80633 • (970) 353-7299 • FAX (970) 353-7712



PDC Energy

Surface Cement Job Graph & Casing Pressure Test

COMPANY DETAILS

Date	7/1/22	API #	05-123-51134	Well No.	06N
County	Weld	State	CO	Lease	Bernhardt

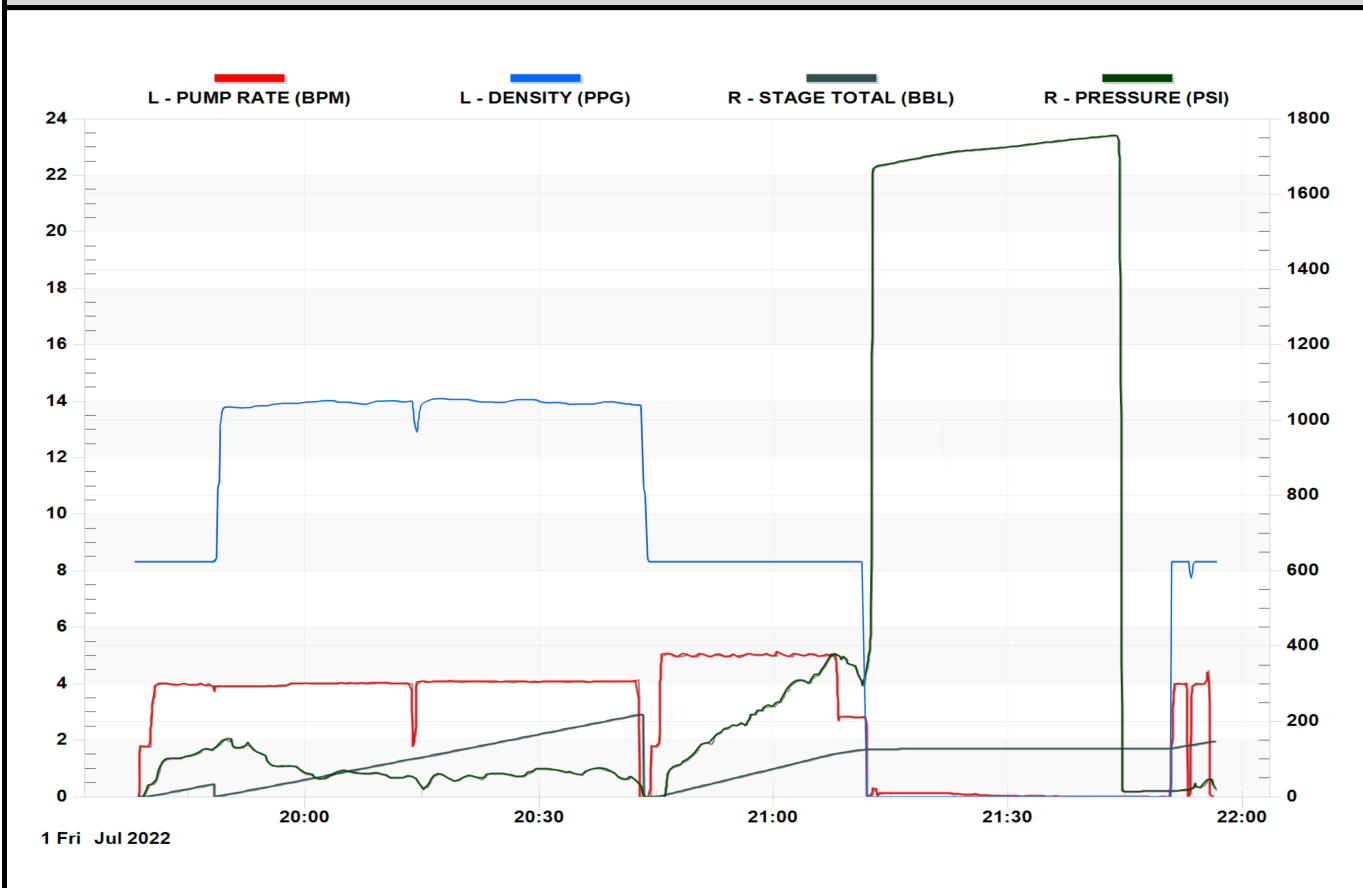
Client PDC Energy

Contact / email

JOB DETAILS

TIME ON	19:15	24 hr	Depth	1,675	ft.	Pressure Test @	1,668	psi
START TIME	19:38	7/1/22	Bottom of Surface	1,665	ft.	10 min	1,713	psi
END TIME	21:56	7/1/22	Plug Landed @	1,622	ft.	20 min	1,732	psi
			Plug Landed @	21:12	24 hr	30 min	1,753	psi

SUMMARY GRAPH





Centralizer Depths

Well Name: Bernhardt 06N Surface, Set Depth: 1,665.0ftKB

API 05123511340000		Surface Legal Location NWNW 18 4N 66W		Field Name Wattenberg		State CO		Well Configuration Type Horizontal	
Ground Elevation (ft) 4,736.00	Original KB Elevation (ft) 4,749.00	KB-Ground Distance (ft) 13.00	Spud Date		Rig Release Date		On Production Date		Abandon Date

Casing Run Tally												
Run #	Ref #	Item Des	OD (in)	Wt (lb/ft)	Grade	Run?	Len (ft)	Centralized?	Ext Jwlry	Connections	Top (ftKB)	Cum Len (ft)
2		Casing Joints	9 5/8	36.00	J-55	Yes	42.15	Yes		LT&C	1,621.0	44.00
3		Casing Joints	9 5/8	36.00	J-55	Yes	42.17	Yes		LT&C	1,578.8	86.17
4		Casing Joints	9 5/8	36.00	J-55	Yes	42.16	Yes		LT&C	1,536.7	128.33
8		Casing Joints	9 5/8	36.00	J-55	Yes	42.19	Yes		LT&C	1,368.0	296.98
12		Casing Joints	9 5/8	36.00	J-55	Yes	42.19	Yes		LT&C	1,199.3	465.75
16		Casing Joints	9 5/8	36.00	J-55	Yes	42.18	Yes		LT&C	1,031.1	633.95
20		Casing Joints	9 5/8	36.00	J-55	Yes	41.65	Yes		LT&C	862.9	802.12
24		Casing Joints	9 5/8	36.00	J-55	Yes	42.18	Yes		LT&C	694.2	970.80
28		Casing Joints	9 5/8	36.00	J-55	Yes	42.16	Yes		LT&C	525.5	1,139.47
32		Casing Joints	9 5/8	36.00	J-55	Yes	42.16	Yes		LT&C	356.9	1,308.14
36		Casing Joints	9 5/8	36.00	J-55	Yes	42.16	Yes		LT&C	188.9	1,476.08
39		Casing Joints	9 5/8	36.00	J-55	Yes	42.17	Yes		LT&C	62.7	1,602.27