

Cement Verification Report - Cementer's Well Service, Inc.



P.O. BOX 336220 • GREELEY, CO 80633 • (970) 353-7299 • FAX (970) 353-7712

COGCC Operator Guidance RULE #308.A.B(2)A.ii

CLIENT: PDC Energy	Cementer's FIELD TICKET #	300322-D
--------------------	------------------------------	----------

Requested Operator Guidance:

Well Name & Number	Lease	Bernhardt	Well No.	01C
Well API Number	05-123-51141			
Job Date	6/28/22	Time on	7:30	24 hr time
Job Type	New Well Surface			
Cementing Company	Cementer's Well Service, Inc	Contact	Nate Kvamme - 303-324-4296	
Ambient conditions	clear	82	temp deg F	
Slurry Description				
a) Purpose	Surface - 9 5/8" 36# CSG, 13 1/2" hole			
b) Cement Class	ASTM C150 Type II			
c) Cement Yield	1.61	cuft / sk		
d) Cement Density	13.9	PPG		
e) Number of sks	994	sks (94# equiv)		
f) Mix Fluid Type				
Water / Cement	8.5	Gal / sk		
g) Slurry mixed	284.9	BBLs slurry		
h) Additives used	1.5%	CaCl2	3.0%	Bentonite
Total Water Used	358.6	BBLs H2O		
i) Displacement Fluid Vol	127.5	BBLs H2O		
j) Method of Placement				
k) Set Depth	1,692	feet (ft)		
l) Stage tool depth	n/a			
m) Float Collar Depth	1,649	feet (ft)		
n) Designed Top of Cement	n/a	to surface		
o) Centralizer depths	0	feet (ft)		

Charts - (pressure, density, pump rate)

Landed Plug @ 1674 psi Final Lift Pressure @ 350 psi

Cement Density (as weighed during job) @ 13.9 PPG

Job notes

a) Plug down	<input checked="" type="radio"/> Y <input type="radio"/> N	Time	10:50	24 hr time
b) Floats held	<input checked="" type="radio"/> Y <input type="radio"/> N		6/28/22	
c) Full Returns	<input checked="" type="radio"/> Y <input type="radio"/> N	Lost Circulation	<input checked="" type="radio"/> Y <input type="radio"/> N	
d) Cement to surface	<input checked="" type="radio"/> Y <input type="radio"/> N	92.0	BBLs to surface	
e) If no returns, top off	n/a	BBLs		
f) Top off detail				
g) Additional Detail				

Cementer's Well Service, Inc.

P.O. BOX 336220 • GREELEY, CO 80633 • (970) 353-7299 • FAX (970) 353-7712



PDC Energy

Surface Cement Job Graph & Casing Pressure Test

COMPANY DETAILS

Date	6/28/22	API #	05-123-51141	Well No.	01C
County	Weld	State	CO	Lease	Bernhardt

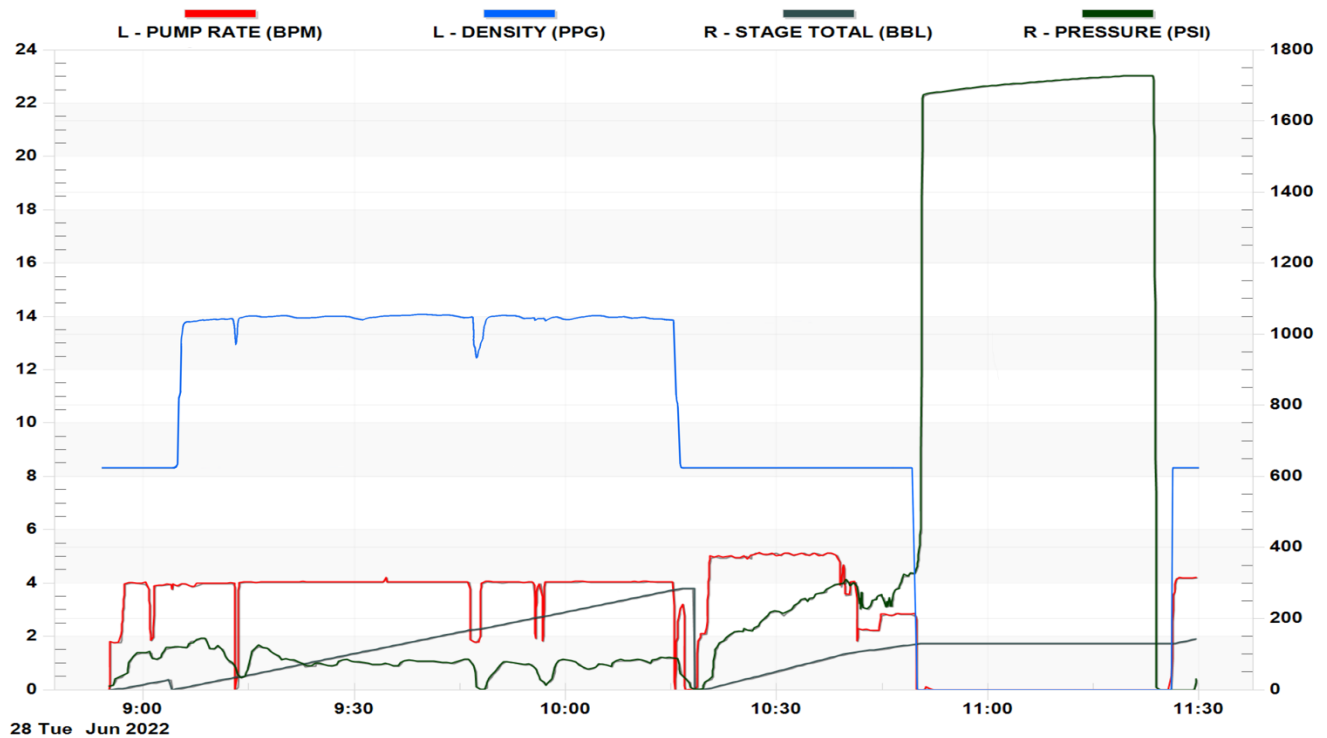
Client PDC Energy

Contact / email

JOB DETAILS

TIME ON	7:30	24 hr	Depth	1,692	ft.	Pressure Test @	1,674	psi
START TIME	8:55	6/28/22	Bottom of Surface	1,692	ft.	10 min	1,699	psi
END TIME	11:29	6/28/22	Plug Landed @	1,649	ft.	20 min	1,716	psi
			Plug Landed @	10:50	24 hr	30 min	1,729	psi

SUMMARY GRAPH





Centralizer Depths

Well Name: **Bernhardt 01C**

Surface, Set Depth: **1,691.5ftKB**

API 05123511410000		Surface Legal Location NWNW 18 4N 66W		Field Name Wattenberg		State CO		Well Configuration Type Horizontal	
Ground Elevation (ft) 4,736.00	Original KB Elevation (ft) 4,749.00	KB-Ground Distance (ft) 13.00		Spud Date	Rig Release Date	On Production Date		Abandon Date	

Casing Run Tally

Run #	Ref #	Item Des	OD (in)	Wt (lb/ft)	Grade	Run?	Len (ft)	Centralized?	Ext Jw/ry	Connections	Top (ftKB)	Cum Len (ft)
2		Casing Joints	9 5/8	36.00	J-55	Yes	42.15	Yes		LT&C	1,647.5	44.00
3		Casing Joints	9 5/8	36.00	J-55	Yes	42.16	Yes		LT&C	1,605.3	86.16
4		Casing Joints	9 5/8	36.00	J-55	Yes	42.18	Yes		LT&C	1,563.2	128.34
8		Casing Joints	9 5/8	36.00	J-55	Yes	41.80	Yes		LT&C	1,395.0	296.51
12		Casing Joints	9 5/8	36.00	J-55	Yes	42.16	Yes		LT&C	1,226.3	465.17
16		Casing Joints	9 5/8	36.00	J-55	Yes	41.81	Yes		LT&C	1,058.0	633.47
20		Casing Joints	9 5/8	36.00	J-55	Yes	41.49	Yes		LT&C	891.1	800.38
24		Casing Joints	9 5/8	36.00	J-55	Yes	41.47	Yes		LT&C	725.2	966.28
28		Casing Joints	9 5/8	36.00	J-55	Yes	41.25	Yes		LT&C	559.5	1,131.96
32		Casing Joints	9 5/8	36.00	J-55	Yes	41.46	Yes		LT&C	393.7	1,297.84
36		Casing Joints	9 5/8	36.00	J-55	Yes	41.45	Yes		LT&C	227.9	1,463.56
40		Casing Joints	9 5/8	36.00	J-55	Yes	41.48	Yes		LT&C	62.0	1,629.46