



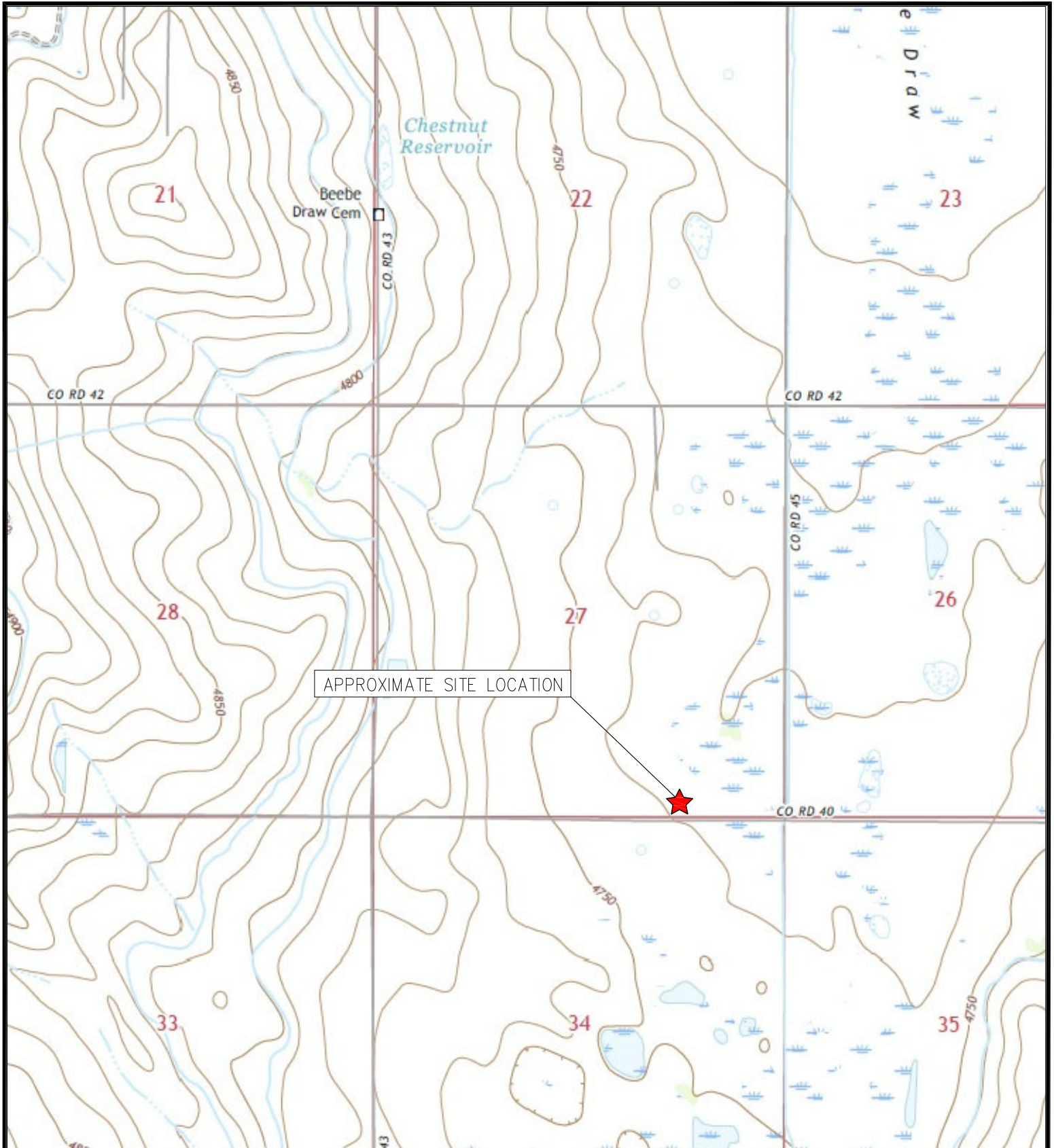
FIGURES

Figure 1: Topographic Site Location Map

Figure 2: Aerial Site Location Map

Figure 3: Soil Analytical Map

Figure 4: Polycyclic Aromatic Hydrocarbons Map



TOPOGRAPHIC SITE LOCATION MAP
 LIBSACK 4-8-27
 VENT LINE RELEASE
 40.276553 / -104.644507
 SW¼ SE¼ SEC.27 T4N R65W 6PM
 WELD COUNTY, COLORADO
 LOCATION ID 310312
 REMEDIATION # 23926



EAGLE
 ENVIRONMENTAL
 CONSULTING, INC.

8000 W 44th Ave, Wheat Ridge, CO 80033
 Ph: 303-433-0479 • F: 303-325-5449

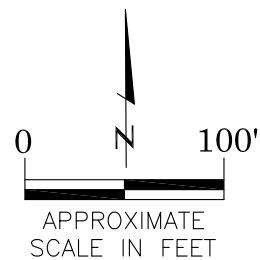
SOURCE: USGS 7.5 MINUTE TOPOGRAPHIC MAP,
 LA SALLE, CO QUADRANGLE 2022

FIGURE 1



LEGEND

- APPROXIMATE FACILITY BOUNDARIES
- APPROXIMATE RELEASE LOCATION



AERIAL SITE LOCATION MAP

LIBSACK 4-8-27
VENT LINE RELEASE
40.276553 / -104.644507
SW¼ SE¼ SEC.27 T4N R65W 6PM
WELD COUNTY, COLORADO
LOCATION ID 310312
REMEDIAL # 23926

DATE:

09/30/22

FIG. NO.

2

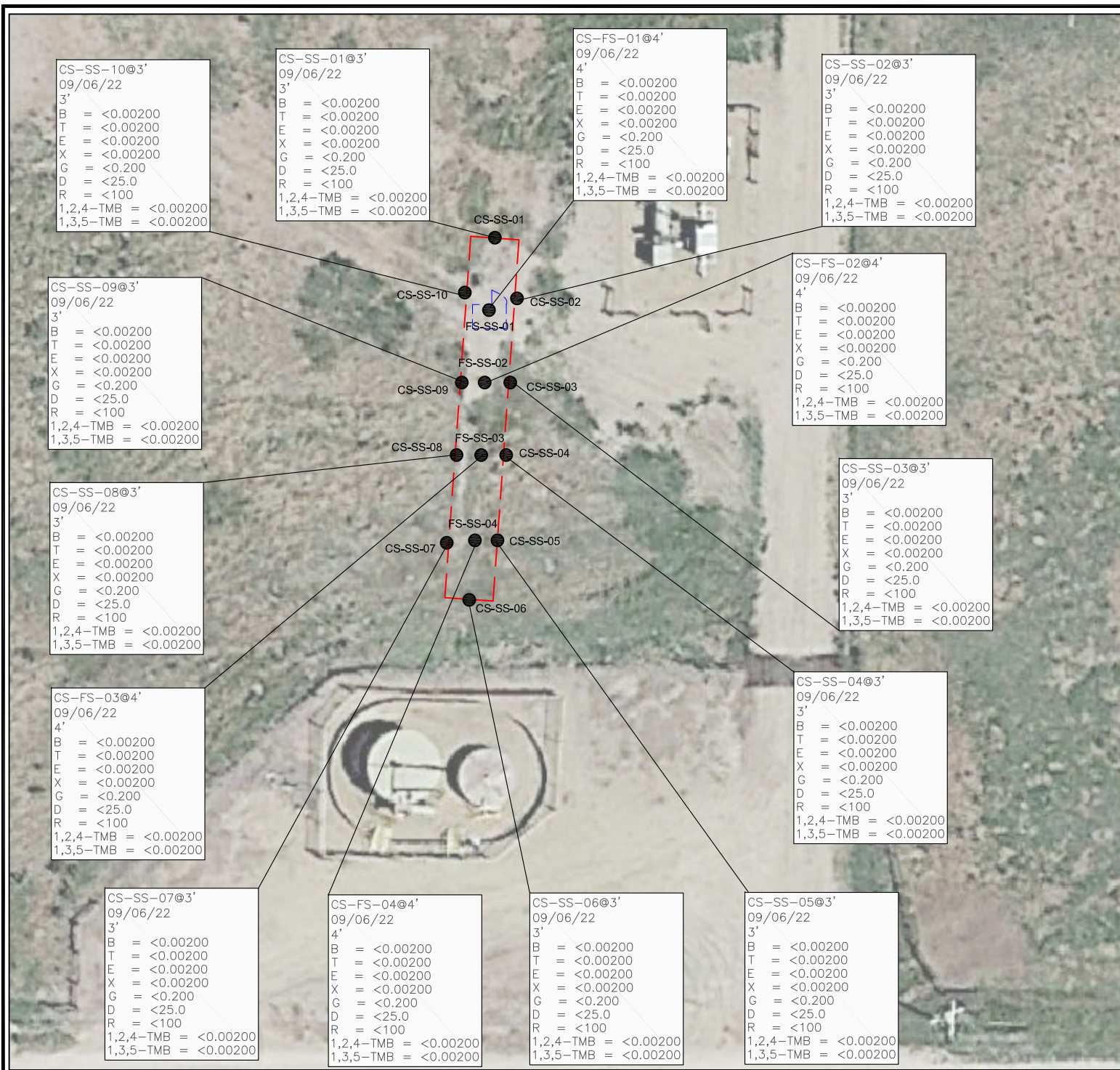
DRAWN BY:

AMN



EAGLE
ENVIRONMENTAL
CONSULTING, INC.

8000 W 44th Ave, Wheat Ridge, CO 80033
Ph: 303-433-0479 • F: 303-325-5449



LEGEND

- INITIAL ASSESSMENT EXTENTS
- APPROXIMATE EXCAVATION EXTENTS
- APPROXIMATE LOCATION OF SOIL SAMPLES SUBMITTED FOR LABORATORY ANALYSIS

PARAMETERS

SAMPLE LOCATION

DATE

DEPTH (FEET)

B = BENZENE (mg/kg)

T = TOLUENE (mg/kg)

E = ETHYLBENZENE (mg/kg)

X = TOTAL XYLENES (mg/kg)

G = TPH-GRO (mg/kg)

D = TPH-DRO (mg/kg)

R = TPH-RRO (mg/kg)

1,2,4-TMB = 1,2,4 TRIMETHYLBENZENE (mg/kg)

1,3,5-TMB = 1,3,5 TRIMETHYLBENZENE (mg/kg)

mg/kg = MILLIGRAMS PER KILOGRAM

TPH-GRO = TOTAL PETROLEUM HYDROCARBONS - GASOLINE RANGE ORGANICS

TPH-DRO = TOTAL PETROLEUM HYDROCARBONS - DIESEL RANGE ORGANICS

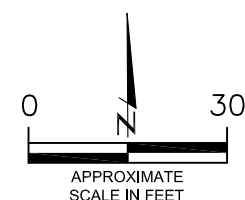
TPH-RRO = TOTAL PETROLEUM HYDROCARBONS - RESIDUAL RANGE ORGANICS

NOTES:

VALUES PRESENTED WITH A LESS THAN SYMBOL (<) DID NOT CONTAIN CONCENTRATIONS AT OR ABOVE LABORATORY DETECTION LIMITS.

VALUES PRESENTED IN **BOLD** EXCEED COGCC TABLE 915-1 REGULATORY LIMITS.

COGCC = COLORADO OIL AND GAS CONSERVATION COMMISSION



SOIL ANALYTICAL MAP

LIBSACK 4-8-27

VENT LINE RELEASE

40.276553 / -104.644507

SW¼ SEC.27 T4N R65W 6PM

WELD COUNTY, COLORADO

LOCATION ID 310312

REMEDIATION # 23926

DATE:

09/29/22

DRAWN BY:

GEC

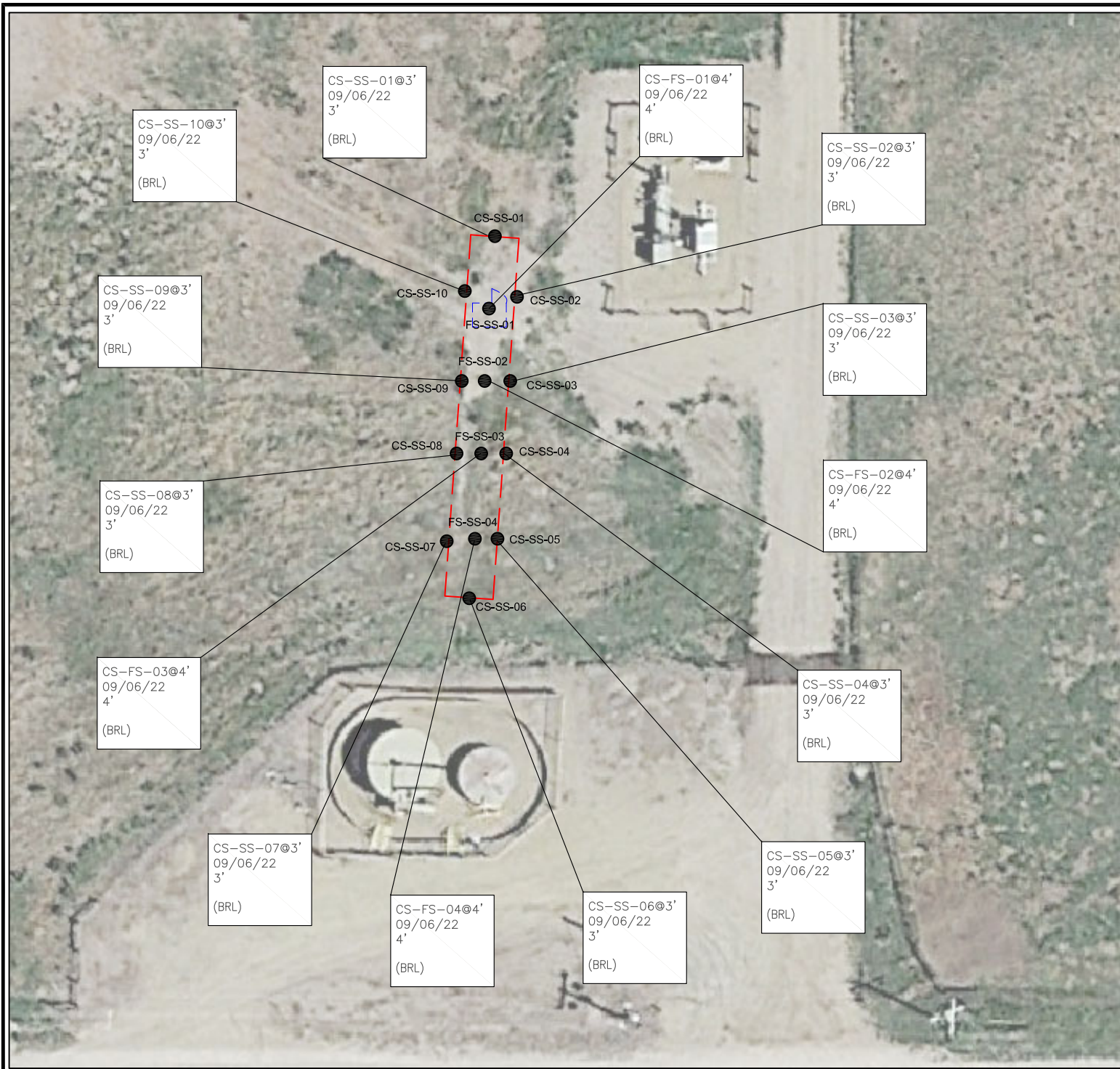
FIG.
NO.

3



EAGLE
ENVIRONMENTAL
CONSULTING, INC.

8000 W 44th Ave, Wheat Ridge, CO 80033
Ph: 303-433-0479 • F: 303-325-5449



LEGEND

- INITIAL ASSESSMENT EXTENTS
- APPROXIMATE EXCAVATION EXTENTS
- APPROXIMATE LOCATION OF SOIL SAMPLES SUBMITTED FOR LABORATORY ANALYSIS

PARAMETERS

SAMPLE LOCATION
DATE SAMPLE COLLECTED
APPROXIMATE DEPTH
POLYCYCLIC AROMATIC HYDROCARBONS (PAHs) (mg/kg)

mg/kg = MILLIGRAMS PER KILOGRAM

ND = NON-DETECT

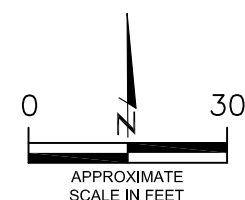
(BRL) = ALL CONCENTRATIONS ARE **BELOW** REGULATORY LIMITS

NOTES:
VALUES PRESENTED WITH A LESS THAN SYMBOL (<) DID NOT CONTAIN CONCENTRATIONS AT OR ABOVE LABORATORY DETECTION LIMITS.

VALUES PRESENTED IN **BOLD** EXCEED COGCC TABLE 915-1 REGULATORY LIMITS.

VALUES PRESENTED WITH AN ASTERISK (*) EXCEED COGCC TABLE 915-1 PROTECTION OF GROUNDWATER SOIL SCREENING LEVELS.

COGCC = COLORADO OIL AND GAS CONSERVATION COMMISSION



POLYCYCLIC AROMATIC HYDROCARBONS MAP
LIBSACK 4-8-27
VENT LINE RELEASE
40.276553 / -104.644507
SW¼ SEC.27 T4N R65W 6PM
WELD COUNTY, COLORADO
LOCATION ID 310312
REMEDIATION # 23926

DATE:
09/29/22
DRAWN BY:
GEC
FIG.
NO. 4





TABLES

Table 1: Photoionization Detector Reading Summary

Table 2: Soil Analytical Results Summary

Tables 3: Polycyclic Aromatics Hydrocarbons Analytical Results Summary

TABLE 1
 PHOTOIONIZATION DETECTOR READING SUMMARY
 LIBSACK 4-8-27
 VENT LINE RELEASE
 40.276553 / -104.644507
 SW1/4 SE1/4 SEC.27 T4N R65W 6PM
 WELD COUNTY, COLORADO
 LOCATION ID 310312
 REMEDIATION # 23926

Sample Location (Latitude/Longitude)	Date	Approximate Depth (feet)	PID Reading (ppm-v)	Lab Submission (Y/N)
CS-SS-01 @ 3' (40.276590834 / -104.644498753)	09/06/22	3	1.2	Y
CS-SS-02 @ 3' (40.276548441 / -104.644479747)	09/06/22	3	0.6	Y
CS-SS-03 @ 3' (40.276489889 / -104.644494336)	09/06/22	3	0.9	Y
CS-SS-04 @ 3' (40.276447728 / -104.644498323)	09/06/22	3	0.7	Y
CS-SS-05 @ 3' (40.276412384 / -104.644504591)	09/06/22	3	0.4	Y
CS-SS-06 @ 3' (40.276380688 / -104.644529958)	09/06/22	3	0.3	Y
CS-SS-07 @ 3' (40.276416738 / -104.644535368)	09/06/22	3	0.3	Y
CS-SS-08 @ 3' (40.276462218 / -104.644529497)	09/06/22	3	0.6	Y
CS-SS-09 @ 3' (40.276506134 / -104.644527382)	09/06/22	3	0.8	Y
CS-SS-10 @ 3' (40.276553842 / -104.644522154)	09/06/22	3	1.0	Y
CS-FS-01 @ 4' (40.479546118 / -104.644508298)	09/06/22	4	0.8	Y
CS-FS-02 @ 4' (40.276492639 / -104.644519006)	09/06/22	4	0.7	Y
CS-FS-03 @ 4' (40.276450050 / -104.644526314)	09/06/22	4	0.8	Y
CS-FS-04 @ 4' (40.276405385 / -104.644529102)	09/06/22	4	0.4	Y
(Y/N) = Yes or No ppm-v = parts per million by volume PID = Photoionization Detector				

TABLE 2
SOIL ANALYTICAL RESULTS SUMMARY
LIBSACK 4-8-27
VENT LINE RELEASE
40.276553 / -104.644507
SW1/4 SE1/4 SEC.27 T4N R65W 6PM
WELD COUNTY, COLORADO
LOCATION ID 310312
REMEDATION # 23926

Sample Location (Latitude/Longitude)	Date	Approximate Depth (feet)	PID Reading (ppm-v)	Benzene (mg/kg)	Toluene (mg/kg)	Ethylbenzene (mg/kg)	Total Xylenes (mg/kg)	TPH-GRO (mg/kg)	TPH-DRO (mg/kg)	TPH-RRO (mg/kg)	1,2,4- Trimethylbenzene (mg/kg)	1,3,5- Trimethylbenzene (mg/kg)
COGCC Table 915-1 Residential Screening Levels				1.2	490	5.8	58	500			30	27
COGCC Table 915-1 Protection of Groundwater Soil Screening Levels				0.0026	0.69	0.78	9.9	--			0.0081	0.0087
CS-SS-01 @ 3' (40.276590834 / -104.644498753)	09/06/22	3	1.2	<0.00200	<0.00200	<0.00200	<0.00200	<0.200	<25.0	<100	<0.00200	<0.00200
CS-SS-02 @ 3' (40.276548441 / -104.644479747)	09/06/22	3	0.6	<0.00200	<0.00200	<0.00200	<0.00200	<0.200	<25.0	<100	<0.00200	<0.00200
CS-SS-03 @ 3' (40.276489889 / -104.644494336)	09/06/22	3	0.9	<0.00200	<0.00200	<0.00200	<0.00200	<0.200	<25.0	<100	<0.00200	<0.00200
CS-SS-04 @ 3' (40.276447728 / -104.644498323)	09/06/22	3	0.7	<0.00200	<0.00200	<0.00200	<0.00200	<0.200	<25.0	<100	<0.00200	<0.00200
CS-SS-05 @ 3' (40.276412384 / -104.644504591)	09/06/22	3	0.4	<0.00200	<0.00200	<0.00200	<0.00200	<0.200	<25.0	<100	<0.00200	<0.00200
CS-SS-06 @ 3' (40.276380688 / -104.644529958)	09/06/22	3	0.3	<0.00200	<0.00200	<0.00200	<0.00200	<0.200	<25.0	<100	<0.00200	<0.00200
CS-SS-07 @ 3' (40.276416738 / -104.644535368)	09/06/22	3	0.3	<0.00200	<0.00200	<0.00200	<0.00200	<0.200	<25.0	<100	<0.00200	<0.00200
CS-SS-08 @ 3' (40.276462218 / -104.644529497)	09/06/22	3	0.6	<0.00200	<0.00200	<0.00200	<0.00200	<0.200	<25.0	<100	<0.00200	<0.00200
CS-SS-09 @ 3' (40.276506134 / -104.644527382)	09/06/22	3	0.8	<0.00200	<0.00200	<0.00200	<0.00200	<0.200	<25.0	<100	<0.00200	<0.00200
CS-SS-10 @ 3' (40.276553842 / -104.644522154)	09/06/22	3	1.0	<0.00200	<0.00200	<0.00200	<0.00200	<0.200	<25.0	<100	<0.00200	<0.00200
CS-FS-01 @ 4' (40.479546118 / -104.644508298)	09/06/22	4	0.8	<0.00200	<0.00200	<0.00200	<0.00200	<0.200	<25.0	<100	<0.00200	<0.00200
CS-FS-02 @ 4' (40.276492639 / -104.644519006)	09/06/22	4	0.7	<0.00200	<0.00200	<0.00200	<0.00200	<0.200	<25.0	<100	<0.00200	<0.00200
CS-FS-03 @ 4' (40.276450050 / -104.644526314)	09/06/22	4	0.8	<0.00200	<0.00200	<0.00200	<0.00200	<0.200	<25.0	<100	<0.00200	<0.00200
CS-FS-04 @ 4' (40.276405385 / -104.644529102)	09/06/22	4	0.4	<0.00200	<0.00200	<0.00200	<0.00200	<0.200	<25.0	<100	<0.00200	<0.00200
COGCC = Colorado Oil and Gas Conservation Commission mg/kg = milligrams per kilogram TPH-GRO = Total Petroleum Hydrocarbons - Gasoline Range Organics NA - Not Analyzed TPH-DRO = Total Petroleum Hydrocarbons - Diesel Range Organics ppm-v = parts per million by volume TPH-RRO = Total Petroleum Hydrocarbons - Residual Range Organics PID = Photoionization Detector Notes: Values presented with a less than symbol (<) did not contain concentrations at or above the laboratory reporting limit. Values presented in BOLD exceed applicable COGCC Table 915-1 Regulatory Limits Values presented in BOLD + asterisk (*) exceed COGCC Table 915-1 Protection of Groundwater Soil Screening Levels												

TABLE 2
PAHS ANALYTICAL RESULTS SUMMARY
LIBSACK 4-8-27
VENT LINE RELEASE
40.276553 / -104.644507
SW1/4 SE1/4 SEC.27 T4N R65W 6PM
WELD COUNTY, COLORADO
LOCATION ID 310312
REMEDATION # 23926

Sample Location (Latitude/Longitude)	Date	Approximate Depth (feet)	PID Reading (ppm-v)	1-Methyl- naphthalene (mg/kg)	2-Methyl- naphthalene (mg/kg)	Acenaphthene (mg/kg)	Anthracene (mg/kg)	Benzo(a)-anthracene (mg/kg)	Benzo(a)- pyrene (mg/kg)	Benzo(b)- fluoranthene (mg/kg)	Benzo(k)- fluoranthene (mg/kg)	Chrysene (mg/kg)	Dibenzo(a,h)- anthracene (mg/kg)	Fluoranthene (mg/kg)	Fluorene (mg/kg)	Ideno(1,2,3- cd)-pyrene (mg/kg)	Naphthalene (mg/kg)	Pyrene (mg/kg)
COGCC Table 915-1 Residential Screening Levels				18	24	360	1,800	1.1	0.11	1.1	11	110	0.11	240	240	1.1	2	180
COGCC Table 915-1 Protection of Groundwater Soil Screening Levels				0.006	0.019	0.55	5.8	0.011	0.24	0.3	2.9	9	0.096	8.9	0.54	0.98	0.0038	1.3
CS-SS-01 @ 3' (40.276590834 / -104.644498753)	09/06/22	3	1.2	<0.00067	<0.00067	<0.00067	<0.00067	<0.00067	0.00081	0.000606	<0.00067	<0.00067	<0.00067	0.000522	<0.00067	<0.00067	<0.00067	0.000712
CS-SS-02 @ 3' (40.276548441 / -104.644479747)	09/06/22	3	0.6	<0.00067	<0.00067	<0.00067	<0.00067	<0.00067	<0.00067	<0.00067	<0.00067	<0.00067	<0.00067	<0.00067	<0.00067	<0.00067	<0.00067	<0.00067
CS-SS-03 @ 3' (40.276489889 / -104.644494336)	09/06/22	3	0.9	<0.00067	<0.00067	<0.00067	<0.00067	<0.00067	0.00123	0.000651	0.00091	0.000975	<0.00067	0.000764	<0.00067	<0.00067	<0.00067	0.000881
CS-SS-04 @ 3' (40.276447728 / -104.644498323)	09/06/22	3	0.7	<0.00067	<0.00067	<0.00067	<0.00067	<0.00067	<0.00067	<0.00067	<0.00067	<0.00067	<0.00067	<0.00067	<0.00067	<0.00067	<0.00067	<0.00067
CS-SS-05 @ 3' (40.276412384 / -104.644504591)	09/06/22	3	0.4	<0.00067	<0.00067	<0.00067	<0.00067	0.00118	0.00193	0.0012	0.00143	0.00228	<0.00067	0.00202	<0.00067	0.00112	<0.00067	0.00366
CS-SS-06 @ 3' (40.276380688 / -104.644529958)	09/06/22	3	0.3	<0.00067	<0.00067	<0.00067	<0.00067	0.000938	0.00177	0.000887	0.00139	0.00187	<0.00067	0.00167	<0.00067	0.000742	<0.00067	0.0024
CS-SS-07 @ 3' (40.276416738 / -104.644535368)	09/06/22	3	0.3	<0.00067	<0.00067	<0.00067	<0.00067	0.000539	0.00133	0.000847	0.000983	0.00124	<0.00067	0.00105	<0.00067	<0.00067	<0.00067	0.00136
CS-SS-08 @ 3' (40.276462218 / -104.644529497)	09/06/22	3	0.6	<0.00067	<0.00067	<0.00067	<0.00067	<0.00067	<0.00067	<0.00067	<0.00067	<0.00067	<0.00067	<0.00067	<0.00067	<0.00067	<0.00067	<0.00067
CS-SS-09 @ 3' (40.276506134 / -104.644527382)	09/06/22	3	0.8	<0.00067	<0.00067	<0.00067	<0.00067	0.000501	0.00171	0.000993	0.0011	0.00134	<0.00067	0.00111	<0.00067	0.000892	<0.00067	0.00134
CS-SS-10 @ 3' (40.276553842 / -104.644522154)	09/06/22	3	1.0	<0.00335	<0.00335	<0.00335	<0.00335	<0.00335	<0.00335	<0.00335	<0.00335	<0.00335	<0.00335	<0.00335	<0.00335	<0.00335	<0.00335	<0.00335
CS-FS-01 @ 4' (40.479546118 / -104.644508298)	09/06/22	4	0.8	<0.00067	<0.00067	<0.00067	<0.00067	<0.00067	<0.00067	<0.00067	<0.00067	<0.00067	<0.00067	<0.00067	<0.00067	<0.00067	<0.00067	<0.00067
CS-FS-02 @ 4' (40.276492639 / -104.644519006)	09/06/22	4	0.7	<0.00335	<0.00335	<0.00335	<0.00335	<0.00335	0.00238	<0.00335	<0.00335	<0.00335	<0.00335	<0.00335	<0.00335	<0.00335	<0.00335	<0.00335
CS-FS-03 @ 4' (40.276450050 / -104.644526314)	09/06/22	4	0.8	<0.00067	<0.00067	<0.00067	<0.00067	<0.00067	<0.00067	<0.00067	<0.00067	<0.00067	<0.00067	<0.00067	<0.00067	<0.00067	<0.00067	<0.00067
CS-FS-04 @ 4' (40.276405385 / -104.644529102)	09/06/22	4	0.4	<0.00067	<0.00067	<0.00067	<0.00067	0.000828	0.00234	0.00118	0.00155	0.00207	<0.00067	0.0017	<0.00067	0.0014	<0.00067	0.0022
COGCC = Colorado Oil and Gas Conservation Commission mg/kg = milligrams per kilogram ppm-v = parts per million by volume PID = Photoionization Detector Notes: Values presented with a less than symbol (<) did not contain concentrations at or above the laboratory reporting limit. Values presented in BOLD exceed applicable COGCC Table 915-1 Regulatory Limits Values presented in BOLD+ asterisk (*) exceed COGCC Table 915-1 Protection of Groundwater Soil Screening Levels																		



ATTACHMENT A

Photolog

Libsack 4-8-27
Location ID 310312
Remediation # 23926

Source Excavation

September 2022



EAGLE
ENVIRONMENTAL
CONSULTING, INC.

8000 W 44th Ave, Wheat Ridge, CO 80033
Ph: 303-433-0479 • F: 303-325-5449



CRESTONE PEAK
RESOURCES

Source Excavation/Confirmation Soil Sampling – 09/06/22



Looking northeast

No petroleum hydrocarbon staining or odor observed

Samples collected:

CS-SS-01@3' – 1.2 ppm-v
CS-SS-02@3' – 0.6 ppm-v
CS-SS-03@3' – 0.9 ppm-v
CS-SS-04@3' – 0.7 ppm-v
CS-SS-05@3' – 0.4 ppm-v
CS-FS-03@4' – 0.8 ppm-v
CS-FS-04@4' – 0.4 ppm-v

Source Excavation/Confirmation Soil Sampling – 09/06/22



Looking southwest

No petroleum hydrocarbon staining or odor observed

Samples collected:

CS-SS-06@3' – 0.3 ppm-v

CS-SS-07@3' – 0.3 ppm-v

CS-SS-08@3' – 0.6 ppm-v

CS-SS-09@3' – 0.8 ppm-v

CS-SS-10@3' – 1.0 ppm-v

CS-FS-01@4' – 0.8 ppm-v

CS-FS-02@4' – 0.7 ppm-v



ATTACHMENT B

Laboratory Analytical Report



September 22, 2022

Eagle Environmental Consulting, Inc.

Martin C Eckert III

8000 W 44th Ave

Wheat Ridge CO 80033

Project Name - Civitas - Libsack 4-8-27

Project Number - [none]

Attached are your analytical results for Civitas - Libsack 4-8-27 received by Origins Laboratory, Inc. September 07, 2022. This project is associated with Origins project number Y209119-01.

The analytical results in the following report were analyzed under the guidelines of EPA Methods. These methods are identified as follows; "SW" are defined in SW-846, "EPA" are defined in 40CFR part 136 and "SM" are defined in the most current revision of Standard Methods For the Examination of Water and Wastewater.

The analytical results apply specifically to the samples and analyses specified per the attached Chain of Custody. As such, this report shall not be reproduced except in full, without the written approval of Origin's laboratory.

Unless otherwise noted, the analytical results for all soil samples are reported on a wet weight basis. All analytical analyses were performed under NELAP guidelines unless noted by a data qualifier.

Any holding time exceedances, deviations from the method specifications or deviations from Origins Laboratory's Standard Operating Procedures are outlined in the case narrative.

Thank you for selecting Origins for your analytical needs. Please contact us with any questions concerning this report, or if we can help with anything at all.

Origins Laboratory, Inc.
303.433.1322
o-squad@oelabinc.com



1725 Elk Place, Denver, CO 80211 | Phone: 303.433.1322 | Fax: 303.265.9645

Eagle Environmental Consulting, Inc.
8000 W 44th Ave
Wheat Ridge CO 80033

Martin C Eckert III
Project Number: [none]
Project: Civitas - Libsack 4-8-27

CROSS REFERENCE REPORT

Sample ID	Laboratory ID	Matrix	Date Sampled	Date Received
CS-SS-01@3'	Y209119-01	Soil	September 6, 2022 14:00	09/07/2022 17:15
CS-SS-02@3'	Y209119-02	Soil	September 6, 2022 14:05	09/07/2022 17:15
CS-SS-03@3'	Y209119-03	Soil	September 6, 2022 14:10	09/07/2022 17:15
CS-SS-04@3'	Y209119-04	Soil	September 6, 2022 14:15	09/07/2022 17:15
CS-SS-05@3'	Y209119-05	Soil	September 6, 2022 14:20	09/07/2022 17:15
CS-SS-06@3'	Y209119-06	Soil	September 6, 2022 14:25	09/07/2022 17:15
CS-SS-07@3'	Y209119-07	Soil	September 6, 2022 14:30	09/07/2022 17:15
CS-SS-08@3'	Y209119-08	Soil	September 6, 2022 14:35	09/07/2022 17:15
CS-SS-09@3'	Y209119-09	Soil	September 6, 2022 14:40	09/07/2022 17:15
CS-SS-10@3'	Y209119-10	Soil	September 6, 2022 14:45	09/07/2022 17:15
CS-FS-01@4'	Y209119-11	Soil	September 6, 2022 14:50	09/07/2022 17:15
CS-FS-02@4'	Y209119-12	Soil	September 6, 2022 14:55	09/07/2022 17:15
CS-FS-03@4'	Y209119-13	Soil	September 6, 2022 15:00	09/07/2022 17:15
CS-FS-04@4'	Y209119-14	Soil	September 6, 2022 15:05	09/07/2022 17:15

Origins Laboratory, Inc.



Jen Pellegrini For Noelle Doyle Mathis, President

The results in this report apply to the samples analyzed in accordance with the chain of custody document. This analytical report must be reproduced in its entirety.

Eagle Environmental Consulting, Inc.

8000 W 44th Ave

Wheat Ridge CO 80033

Martin C Eckert III

Project Number: [none]

Project: Civitas - Libsack 4-8-27

Origins Laboratory, Inc.



Jen Pellegrini For Noelle Doyle Mathis, President

The results in this report apply to the samples analyzed in accordance with the chain of custody document. This analytical report must be reproduced in its entirety.

Eagle Environmental Consulting, Inc.
8000 W 44th Ave
Wheat Ridge CO 80033

Martin C Eckert III
Project Number: [none]
Project: Civitas - Libsack 4-8-27

1725 Elk Place | Denver, CO 80211 | Phone: 303.433.1322 | Fax: 303.265.9645

Ⓟ B.I. to Jacob Temp Received - 2.3' Date Results Needed Ⓟ Civitas

Sample ID Description	Date Sampled	Time Sampled	# of Containers	Preservative				Matrix				Analysis				Sample Instructions	
				Unpreserved	HCl	HNO ₃	Other	Groundwater	Soil	Air Summa Canister #	Other	5. BTEX, TAP	1. 2. 3. 4. 5. 6. 7. 8. 9. 10.	11. 12. 13. 14. 15. 16. 17. 18. 19. 20.			
CS-S5-01 @ 3'	09/10/12	1400	2	X						X				X	X	X	Ⓟ NDs noted
CS-S5-02 @ 3'		1405															
CS-S5-03 @ 3'		1410															
CS-S5-04 @ 3'		1415															
CS-S5-05 @ 3'		1420															
CS-S5-06 @ 3'		1425															
CS-S5-07 @ 3'		1430															
CS-S5-08 @ 3'		1435															
CS-S5-09 @ 3'		1440															
CS-S5-10 @ 3'		1445															
Relinquished By: <u>Techer Logic</u>	Date: 09-07-22	Time: 1715															
Relinquished By:	Date:	Time:															
Received By: <u>DE</u>	Date: 09/07/2012	Time: 1715															
Received By:	Date:	Time:															
Turnaround Time:																	
Some Day <input type="checkbox"/>																	
48 Hr <input type="checkbox"/>																	
72 Hr <input type="checkbox"/>																	
Standard <input checked="" type="checkbox"/>																	

Client: Eagle Environmental Consulting
Address: 8000 W 44th Ave
Wheat Ridge, CO 80033
Telephone Number: 303-433-0479
Email Address: MCE3@eagle-enviro.com
Project Manager: Martin Eckert III
Project Name: Libsack 4-8-27
Project Number: —
Samples Collected By: TE/EM

ORIGINS
LABORATORY, INC

4209119

www.originslaboratory.com

page 1 of 2

Origins Laboratory, Inc.

Jefe Pellegrini

Jen Pellegrini For Noelle Doyle Mathis, President

The results in this report apply to the samples analyzed in accordance with the chain of custody document. This analytical report must be reproduced in its entirety.

Eagle Environmental Consulting, Inc.
8000 W 44th Ave
Wheat Ridge CO 80033

Martin C Eckert III
Project Number: [none]
Project: Civitas - Libsack 4-8-27

1725 Elk Place | Denver, CO 80211 | Phone: 303.433.1322 | Fax: 303.265.9645

ORIGINS
LABORATORY, INC

www.originslaboratory.com

page 2 of 2

Client: Eagle Environmental Consulting
Address: 8000 W 44th Ave
Wheat Ridge, CO 80033
Telephone Number: 303-433-0479
Email Address: mce3@eagle-enviro.com
Project Manager: Martin Eckert III
Project Name: Libsack 4-8-27
Project Number: ---
Samples Collected By: TC/IA

Sample ID Description	Date Sampled	Time Sampled	# of Containers	Preservative			Matrix			Analysis	Sample Instructions
				Unpreserved	HCl	HNO ₃	Other	Groundwater	Soil		
CS-FS-01 @ 4'	09/06/12	1450	2	X					X		<input checked="" type="checkbox"/> ADUs needed 1 2 3 4 5 6 7 8 9 10
CS-FS-02 @ 4'		1455							X		
CS-FS-03 @ 4'		1500							X		
CS-FS-04 @ 4'		1505							X		
									X		
Relinquished By: <u>Trevor Carls</u> Date: <u>09-07-22</u> Time: <u>1715</u> Received By: <u>DE</u> Date: <u>09/07/2012</u> Time: <u>1715</u> Relinquished By: _____ Date: _____ Time: _____ Received By: _____ Date: _____ Time: _____											

Turnaround Time: ☐ Same Day ☐ 24 Hr ☐ 48 Hr ☐ 72 Hr ☒ Standard

Temp Received: 2.3 Date Results Needed: 09/07/2012

Ⓡ BSL to Jacob Ⓡ Civitas

Origins Laboratory, Inc.

Jen Pellegrini

Jen Pellegrini For Noelle Doyle Mathis, President

The results in this report apply to the samples analyzed in accordance with the chain of custody document. This analytical report must be reproduced in its entirety.

Eagle Environmental Consulting, Inc.
8000 W 44th Ave
Wheat Ridge CO 80033

Martin C Eckert III
Project Number: [none]
Project: Civitas - Libsack 4-8-27

Origins Laboratory

F-012207-01-R1
Effective Date: 01/09/12

Sample Receipt Checklist

Origins Work Order: 4209119 Client: Eagle Environmental
Client Project ID: Libsack 4-8-27
Checklist Completed by: TST/DE Shipped Via: HL
Date/time completed: 9/18/22 (UPS, FedEx, Hand Delivered, Pick-up, etc.)
Airbill #: N/A
Matrix(s) Received: (Check all that apply): ☒ Soil/Solid ☐ Water ☐ Other: _____
(Describe)
Cooler Number/Temperature: 1 12.3 °C 1 °C 1 °C 1 °C
Thermometer ID: TQ04

Requirement Description	Yes	No	N/A	Comments (if any)
If samples require cooling, was the temperature between 0°C to ≤ 6°C ⁽¹⁾ ?	<input checked="" type="checkbox"/>			
Is there ice present (document if blue ice is used)	<input checked="" type="checkbox"/>			
Are custody seals present on cooler? (if so, document in comments if they are signed and dated, broken or intact)		<input checked="" type="checkbox"/>		
Are custody seals present on each sample container? (if so, document in comments if they are signed and dated, broken or intact)		<input checked="" type="checkbox"/>		
Were all samples received intact ⁽¹⁾ ?	<input checked="" type="checkbox"/>			
Was adequate sample volume provided ⁽¹⁾ ?	<input checked="" type="checkbox"/>			
Are short holding time analytes or samples with HTs due within 48 hours present ⁽¹⁾ ?		<input checked="" type="checkbox"/>		
Is a chain-of-custody (COC) present and filled out completely ⁽¹⁾ ?	<input checked="" type="checkbox"/>			
Does the COC agree with the number and type of sample bottles received ⁽¹⁾ ?	<input checked="" type="checkbox"/>			
Do the sample IDs on the bottle labels match the COC ⁽¹⁾ ?	<input checked="" type="checkbox"/>			
Is the COC properly relinquished by the client with date and time recorded ⁽¹⁾ ?	<input checked="" type="checkbox"/>			
For volatiles in water – is there headspace (> ¼ inch bubble) present? If yes, contact client and note in narrative.			<input checked="" type="checkbox"/>	
Are samples preserved that require preservation and was it checked ⁽¹⁾ ? (note ID of confirmation instrument used in comments) / (preservation is not confirmed for subcontracted analyses in order to insure sample integrity)(pH < 2 for samples preserved with HNO ₃ , HCL, H ₂ SO ₄) / (pH > 10 for samples preserved with NaAsO ₂ +NaOH, ZnAc+NaOH)			<input checked="" type="checkbox"/>	
Additional Comments (if any):				

⁽¹⁾ If NO, then contact the client before proceeding with analysis and note date/time and person contacted as well as the corrective action to in the additional comments (above) and the case narrative.

Reviewed by (Project Manager) WST

Date/Time Reviewed 9/18/22

Origins Laboratory, Inc.

Jen Pellegrini

Jen Pellegrini For Noelle Doyle Mathis, President

The results in this report apply to the samples analyzed in accordance with the chain of custody document. This analytical report must be reproduced in its entirety.

Eagle Environmental Consulting, Inc.
8000 W 44th Ave
Wheat Ridge CO 80033

Martin C Eckert III
Project Number: [none]
Project: Civitas - Libsack 4-8-27

CS-SS-01@3'

9/6/2022 2:00:00PM

Analyte	Result	Min Detection Limit	Reporting Limit	Units	Dilution	Batch	Prepared	Analyzed	Notes
---------	--------	---------------------	-----------------	-------	----------	-------	----------	----------	-------

Origins Laboratory, Inc.
Y209119-01 (Soil)

DRO/ORO by EPA 8015D

Diesel (C10-C28)	ND	25.0	mg/kg	1	B210819	09/08/2022	09/15/2022	U
Residual Range Organics (C28-C40)	ND	100	"	"	"	"	"	U

Surrogate: o-Terphenyl	87.3 %	50-150	"	"	"
------------------------	--------	--------	---	---	---

GBTEX+TMBs by 8260D

1,2,4-Trimethylbenzene	ND	0.00200	mg/kg	1	B211003	09/10/2022	09/14/2022	U
1,3,5-Trimethylbenzene	ND	0.00200	"	"	"	"	"	U
Benzene	ND	0.00200	"	"	"	"	"	U
Ethylbenzene	ND	0.00200	"	"	"	"	"	U
Toluene	ND	0.00200	"	"	"	"	"	U
Xylenes, total	ND	0.00200	"	"	"	"	"	U
Gasoline Range Hydrocarbons	ND	0.200	"	"	"	"	"	U

Surrogate: 1,2-Dichloroethane-d4	124 %	70-130	"	"	"
Surrogate: Toluene-d8	98.6 %	70-130	"	"	"
Surrogate: 4-Bromofluorobenzene	97.9 %	70-130	"	"	"

PAH by 8270D SIM

Origins Laboratory, Inc.



The results in this report apply to the samples analyzed in accordance with the chain of custody document. This analytical report must be reproduced in its entirety.

Jen Pellegrini For Noelle Doyle Mathis, President

Eagle Environmental Consulting, Inc.
8000 W 44th Ave
Wheat Ridge CO 80033

Martin C Eckert III
Project Number: [none]
Project: Civitas - Libsack 4-8-27

CS-SS-01@3'

9/6/2022 2:00:00PM

Analyte	Result	Min Detection Limit	Reporting Limit	Units	Dilution	Batch	Prepared	Analyzed	Notes
---------	--------	---------------------	-----------------	-------	----------	-------	----------	----------	-------

Waypoint Analytical, LLC.
Y209119-01 (Soil)

PAH by 8270D SIM

1-Methylnaphthalene	ND	0.000364	0.00067	mg/Kg	1	L636873	09/12/2022	09/12/2022	
2-Methylnaphthalene	ND	0.000645	0.00067	"	"	"	"	"	
Acenaphthene	ND	0.000304	0.00067	"	"	"	"	"	
Anthracene	ND	0.000334	0.00067	"	"	"	"	"	
Benzo(a)anthracene	ND	0.000493	0.00067	"	"	"	"	"	
Benzo(a)pyrene	0.00081	0.000468	0.00067	"	"	"	"	"	
Benzo(b)fluoranthene	0.000606	0.000585	0.00067	"	"	"	"	"	J
Benzo(k)fluoranthene	ND	0.000437	0.00067	"	"	"	"	"	
Chrysene	ND	0.000624	0.00067	"	"	"	"	"	
Dibenz(a,h)anthracene	ND	0.000614	0.00067	"	"	"	"	"	
Fluoranthene	0.000522	0.000394	0.00067	"	"	"	"	"	J
Fluorene	ND	0.000286	0.00067	"	"	"	"	"	
Indeno(1,2,3-cd)pyrene	ND	0.000627	0.00067	"	"	"	"	"	
Naphthalene	ND	0.000484	0.00067	"	"	"	"	"	
Pyrene	0.000712	0.000643	0.00067	"	"	"	"	"	

Surrogate: 2-Fluorobiphenyl	50.9 %	33-115	"	"	"
Surrogate: 4-Terphenyl-d14	60.9 %	33-122	"	"	"
Surrogate: Nitrobenzene-d5	51.8 %	29-110	"	"	"

Origins Laboratory, Inc.



Jen Pellegrini For Noelle Doyle Mathis, President

The results in this report apply to the samples analyzed in accordance with the chain of custody document. This analytical report must be reproduced in its entirety.

Eagle Environmental Consulting, Inc.
8000 W 44th Ave
Wheat Ridge CO 80033

Martin C Eckert III
Project Number: [none]
Project: Civitas - Libsack 4-8-27

CS-SS-02@3'

9/6/2022 2:05:00PM

Analyte	Result	Min Detection Limit	Reporting Limit	Units	Dilution	Batch	Prepared	Analyzed	Notes
---------	--------	---------------------	-----------------	-------	----------	-------	----------	----------	-------

Origins Laboratory, Inc.
Y209119-02 (Soil)

DRO/ORO by EPA 8015D

Diesel (C10-C28)	ND	25.0	mg/kg	1	B210819	09/08/2022	09/15/2022	U
Residual Range Organics (C28-C40)	ND	100	"	"	"	"	"	U

Surrogate: o-Terphenyl	88.3 %	50-150	"	"	"
------------------------	--------	--------	---	---	---

GBTEX+TMBs by 8260D

1,2,4-Trimethylbenzene	ND	0.00200	mg/kg	1	B211003	09/10/2022	09/14/2022	U
1,3,5-Trimethylbenzene	ND	0.00200	"	"	"	"	"	U
Benzene	ND	0.00200	"	"	"	"	"	U
Ethylbenzene	ND	0.00200	"	"	"	"	"	U
Toluene	ND	0.00200	"	"	"	"	"	U
Xylenes, total	ND	0.00200	"	"	"	"	"	U
Gasoline Range Hydrocarbons	ND	0.200	"	"	"	"	"	U

Surrogate: 1,2-Dichloroethane-d4	124 %	70-130	"	"	"
Surrogate: Toluene-d8	99.9 %	70-130	"	"	"
Surrogate: 4-Bromofluorobenzene	98.3 %	70-130	"	"	"

PAH by 8270D-SIM

Origins Laboratory, Inc.



The results in this report apply to the samples analyzed in accordance with the chain of custody document. This analytical report must be reproduced in its entirety.

Jen Pellegrini For Noelle Doyle Mathis, President

Eagle Environmental Consulting, Inc.
8000 W 44th Ave
Wheat Ridge CO 80033

Martin C Eckert III
Project Number: [none]
Project: Civitas - Libsack 4-8-27

CS-SS-02@3'

9/6/2022 2:05:00PM

Analyte	Result	Min Detection Limit	Reporting Limit	Units	Dilution	Batch	Prepared	Analyzed	Notes
---------	--------	---------------------	-----------------	-------	----------	-------	----------	----------	-------

Waypoint Analytical, LLC.
Y209119-02 (Soil)

PAH by 8270D-SIM

1-Methylnaphthalene	ND	0.000364	0.00067	mg/Kg	1	L636990	09/13/2022	09/13/2022
2-Methylnaphthalene	ND	0.000645	0.00067	"	"	"	"	"
Acenaphthene	ND	0.000304	0.00067	"	"	"	"	"
Anthracene	ND	0.000334	0.00067	"	"	"	"	"
Benzo(a)anthracene	ND	0.000493	0.00067	"	"	"	"	"
Benzo(a)pyrene	ND	0.000468	0.00067	"	"	"	"	"
Benzo(b)fluoranthene	ND	0.000585	0.00067	"	"	"	"	"
Benzo(k)fluoranthene	ND	0.000437	0.00067	"	"	"	"	"
Chrysene	ND	0.000624	0.00067	"	"	"	"	"
Dibenz(a,h)anthracene	ND	0.000614	0.00067	"	"	"	"	"
Fluoranthene	ND	0.000394	0.00067	"	"	"	"	"
Fluorene	ND	0.000286	0.00067	"	"	"	"	"
Indeno(1,2,3-cd)pyrene	ND	0.000627	0.00067	"	"	"	"	"
Naphthalene	ND	0.000484	0.00067	"	"	"	"	"
Pyrene	ND	0.000643	0.00067	"	"	"	"	"

Surrogate: 2-Fluorobiphenyl	61 %	33-115	"	"	"
Surrogate: 4-Terphenyl-d14	71.5 %	33-122	"	"	"
Surrogate: Nitrobenzene-d5	62.5 %	29-110	"	"	"

Origins Laboratory, Inc.



The results in this report apply to the samples analyzed in accordance with the chain of custody document. This analytical report must be reproduced in its entirety.

Jen Pellegrini For Noelle Doyle Mathis, President

Eagle Environmental Consulting, Inc.
8000 W 44th Ave
Wheat Ridge CO 80033

Martin C Eckert III
Project Number: [none]
Project: Civitas - Libsack 4-8-27

CS-SS-03@3'

9/6/2022 2:10:00PM

Analyte	Result	Min Detection Limit	Reporting Limit	Units	Dilution	Batch	Prepared	Analyzed	Notes
---------	--------	---------------------	-----------------	-------	----------	-------	----------	----------	-------

Origins Laboratory, Inc.
Y209119-03 (Soil)

DRO/ORO by EPA 8015D

Diesel (C10-C28)	ND	25.0	mg/kg	1	B210819	09/08/2022	09/15/2022	U
Residual Range Organics (C28-C40)	ND	100	"	"	"	"	"	U

Surrogate: o-Terphenyl	83.1 %	50-150	"	"	"
------------------------	--------	--------	---	---	---

GBTEX+TMBs by 8260D

1,2,4-Trimethylbenzene	ND	0.00200	mg/kg	1	B211003	09/10/2022	09/14/2022	U
1,3,5-Trimethylbenzene	ND	0.00200	"	"	"	"	"	U
Benzene	ND	0.00200	"	"	"	"	"	U
Ethylbenzene	ND	0.00200	"	"	"	"	"	U
Toluene	ND	0.00200	"	"	"	"	"	U
Xylenes, total	ND	0.00200	"	"	"	"	"	U
Gasoline Range Hydrocarbons	ND	0.200	"	"	"	"	"	U

Surrogate: 1,2-Dichloroethane-d4	130 %	70-130	"	"	"
Surrogate: Toluene-d8	99.6 %	70-130	"	"	"
Surrogate: 4-Bromofluorobenzene	97.4 %	70-130	"	"	"

PAH by 8270D-SIM

Origins Laboratory, Inc.



The results in this report apply to the samples analyzed in accordance with the chain of custody document. This analytical report must be reproduced in its entirety.

Jen Pellegrini For Noelle Doyle Mathis, President

Eagle Environmental Consulting, Inc.
8000 W 44th Ave
Wheat Ridge CO 80033

Martin C Eckert III
Project Number: [none]
Project: Civitas - Libsack 4-8-27

CS-SS-03@3'

9/6/2022 2:10:00PM

Analyte	Result	Min Detection Limit	Reporting Limit	Units	Dilution	Batch	Prepared	Analyzed	Notes
---------	--------	---------------------	-----------------	-------	----------	-------	----------	----------	-------

Waypoint Analytical, LLC.
Y209119-03 (Soil)

PAH by 8270D-SIM

1-Methylnaphthalene	ND	0.000364	0.00067	mg/Kg	1	L636990	09/13/2022	09/13/2022	
2-Methylnaphthalene	ND	0.000645	0.00067	"	"	"	"	"	
Acenaphthene	ND	0.000304	0.00067	"	"	"	"	"	
Anthracene	ND	0.000334	0.00067	"	"	"	"	"	
Benzo(a)anthracene	ND	0.000493	0.00067	"	"	"	"	"	
Benzo(a)pyrene	0.00123	0.000468	0.00067	"	"	"	"	"	
Benzo(b)fluoranthene	0.000651	0.000585	0.00067	"	"	"	"	"	J
Benzo(k)fluoranthene	0.00091	0.000437	0.00067	"	"	"	"	"	
Chrysene	0.000975	0.000624	0.00067	"	"	"	"	"	
Dibenz(a,h)anthracene	ND	0.000614	0.00067	"	"	"	"	"	
Fluoranthene	0.000764	0.000394	0.00067	"	"	"	"	"	
Fluorene	ND	0.000286	0.00067	"	"	"	"	"	
Indeno(1,2,3-cd)pyrene	ND	0.000627	0.00067	"	"	"	"	"	
Naphthalene	ND	0.000484	0.00067	"	"	"	"	"	
Pyrene	0.000881	0.000643	0.00067	"	"	"	"	"	

Surrogate: 2-Fluorobiphenyl	57.4 %	33-115	"	"	"
Surrogate: 4-Terphenyl-d14	68.9 %	33-122	"	"	"
Surrogate: Nitrobenzene-d5	59.2 %	29-110	"	"	"

Origins Laboratory, Inc.



The results in this report apply to the samples analyzed in accordance with the chain of custody document. This analytical report must be reproduced in its entirety.

Jen Pellegrini For Noelle Doyle Mathis, President

Eagle Environmental Consulting, Inc.
8000 W 44th Ave
Wheat Ridge CO 80033

Martin C Eckert III
Project Number: [none]
Project: Civitas - Libsack 4-8-27

CS-SS-04@3'

9/6/2022 2:15:00PM

Analyte	Result	Min Detection Limit	Reporting Limit	Units	Dilution	Batch	Prepared	Analyzed	Notes
---------	--------	---------------------	-----------------	-------	----------	-------	----------	----------	-------

Origins Laboratory, Inc.
Y209119-04 (Soil)

DRO/ORO by EPA 8015D

Diesel (C10-C28)	ND	25.0	mg/kg	1	B210819	09/08/2022	09/15/2022	U
Residual Range Organics (C28-C40)	ND	100	"	"	"	"	"	U

Surrogate: o-Terphenyl	86.0 %	50-150	"	"	"
------------------------	--------	--------	---	---	---

GBTEX+TMBs by 8260D

1,2,4-Trimethylbenzene	ND	0.00200	mg/kg	1	B211003	09/10/2022	09/14/2022	U
1,3,5-Trimethylbenzene	ND	0.00200	"	"	"	"	"	U
Benzene	ND	0.00200	"	"	"	"	"	U
Ethylbenzene	ND	0.00200	"	"	"	"	"	U
Toluene	ND	0.00200	"	"	"	"	"	U
Xylenes, total	ND	0.00200	"	"	"	"	"	U
Gasoline Range Hydrocarbons	ND	0.200	"	"	"	"	"	U

Surrogate: 1,2-Dichloroethane-d4	128 %	70-130	"	"	"
Surrogate: Toluene-d8	98.3 %	70-130	"	"	"
Surrogate: 4-Bromofluorobenzene	99.0 %	70-130	"	"	"

PAH by 8270D-SIM

Origins Laboratory, Inc.



The results in this report apply to the samples analyzed in accordance with the chain of custody document. This analytical report must be reproduced in its entirety.

Jen Pellegrini For Noelle Doyle Mathis, President

Eagle Environmental Consulting, Inc.
8000 W 44th Ave
Wheat Ridge CO 80033

Martin C Eckert III
Project Number: [none]
Project: Civitas - Libsack 4-8-27

CS-SS-04@3'

9/6/2022 2:15:00PM

Analyte	Result	Min Detection Limit	Reporting Limit	Units	Dilution	Batch	Prepared	Analyzed	Notes
---------	--------	---------------------	-----------------	-------	----------	-------	----------	----------	-------

Waypoint Analytical, LLC.
Y209119-04 (Soil)

PAH by 8270D-SIM

1-Methylnaphthalene	ND	0.000364	0.00067	mg/Kg	1	L636990	09/13/2022	09/13/2022
2-Methylnaphthalene	ND	0.000645	0.00067	"	"	"	"	"
Acenaphthene	ND	0.000304	0.00067	"	"	"	"	"
Anthracene	ND	0.000334	0.00067	"	"	"	"	"
Benzo(a)anthracene	ND	0.000493	0.00067	"	"	"	"	"
Benzo(a)pyrene	ND	0.000468	0.00067	"	"	"	"	"
Benzo(b)fluoranthene	ND	0.000585	0.00067	"	"	"	"	"
Benzo(k)fluoranthene	ND	0.000437	0.00067	"	"	"	"	"
Chrysene	ND	0.000624	0.00067	"	"	"	"	"
Dibenz(a,h)anthracene	ND	0.000614	0.00067	"	"	"	"	"
Fluoranthene	ND	0.000394	0.00067	"	"	"	"	"
Fluorene	ND	0.000286	0.00067	"	"	"	"	"
Indeno(1,2,3-cd)pyrene	ND	0.000627	0.00067	"	"	"	"	"
Naphthalene	ND	0.000484	0.00067	"	"	"	"	"
Pyrene	ND	0.000643	0.00067	"	"	"	"	"

Surrogate: 2-Fluorobiphenyl	62.3 %	33-115	"	"	"
Surrogate: 4-Terphenyl-d14	74.8 %	33-122	"	"	"
Surrogate: Nitrobenzene-d5	63.5 %	29-110	"	"	"

Origins Laboratory, Inc.



The results in this report apply to the samples analyzed in accordance with the chain of custody document. This analytical report must be reproduced in its entirety.

Jen Pellegrini For Noelle Doyle Mathis, President

Eagle Environmental Consulting, Inc.
8000 W 44th Ave
Wheat Ridge CO 80033

Martin C Eckert III
Project Number: [none]
Project: Civitas - Libsack 4-8-27

CS-SS-05@3'

9/6/2022 2:20:00PM

Analyte	Result	Min Detection Limit	Reporting Limit	Units	Dilution	Batch	Prepared	Analyzed	Notes
---------	--------	---------------------	-----------------	-------	----------	-------	----------	----------	-------

Origins Laboratory, Inc.
Y209119-05 (Soil)

DRO/ORO by EPA 8015D

Diesel (C10-C28)	ND	25.0	mg/kg	1	B210819	09/08/2022	09/15/2022	U
Residual Range Organics (C28-C40)	ND	100	"	"	"	"	"	U

Surrogate: o-Terphenyl 84.4 % 50-150 " " "

GBTEX+TMBs by 8260D

1,2,4-Trimethylbenzene	ND	0.00200	mg/kg	1	B211003	09/10/2022	09/14/2022	U
1,3,5-Trimethylbenzene	ND	0.00200	"	"	"	"	"	U
Benzene	ND	0.00200	"	"	"	"	"	U
Ethylbenzene	ND	0.00200	"	"	"	"	"	U
Toluene	ND	0.00200	"	"	"	"	"	U
Xylenes, total	ND	0.00200	"	"	"	"	"	U
Gasoline Range Hydrocarbons	ND	0.200	"	"	"	"	"	U

Surrogate: 1,2-Dichloroethane-d4 129 % 70-130 " " "
Surrogate: Toluene-d8 99.6 % 70-130 " " "
Surrogate: 4-Bromofluorobenzene 98.8 % 70-130 " " "

PAH by 8270D-SIM

Origins Laboratory, Inc.



The results in this report apply to the samples analyzed in accordance with the chain of custody document. This analytical report must be reproduced in its entirety.

Jen Pellegrini For Noelle Doyle Mathis, President

Eagle Environmental Consulting, Inc.
8000 W 44th Ave
Wheat Ridge CO 80033

Martin C Eckert III
Project Number: [none]
Project: Civitas - Libsack 4-8-27

CS-SS-05@3'

9/6/2022 2:20:00PM

Analyte	Result	Min Detection Limit	Reporting Limit	Units	Dilution	Batch	Prepared	Analyzed	Notes
---------	--------	---------------------	-----------------	-------	----------	-------	----------	----------	-------

Waypoint Analytical, LLC.
Y209119-05 (Soil)

PAH by 8270D-SIM

1-Methylnaphthalene	ND	0.000364	0.00067	mg/Kg	1	L636990	09/13/2022	09/13/2022
2-Methylnaphthalene	ND	0.000645	0.00067	"	"	"	"	"
Acenaphthene	ND	0.000304	0.00067	"	"	"	"	"
Anthracene	ND	0.000334	0.00067	"	"	"	"	"
Benzo(a)anthracene	0.00118	0.000493	0.00067	"	"	"	"	"
Benzo(a)pyrene	0.00193	0.000468	0.00067	"	"	"	"	"
Benzo(b)fluoranthene	0.0012	0.000585	0.00067	"	"	"	"	"
Benzo(k)fluoranthene	0.00143	0.000437	0.00067	"	"	"	"	"
Chrysene	0.00228	0.000624	0.00067	"	"	"	"	"
Dibenz(a,h)anthracene	ND	0.000614	0.00067	"	"	"	"	"
Fluoranthene	0.00202	0.000394	0.00067	"	"	"	"	"
Fluorene	ND	0.000286	0.00067	"	"	"	"	"
Indeno(1,2,3-cd)pyrene	0.00112	0.000627	0.00067	"	"	"	"	"
Naphthalene	ND	0.000484	0.00067	"	"	"	"	"
Pyrene	0.00366	0.000643	0.00067	"	"	"	"	"

Surrogate: 2-Fluorobiphenyl	64 %	33-115	"	"	"
Surrogate: 4-Terphenyl-d14	77.9 %	33-122	"	"	"
Surrogate: Nitrobenzene-d5	64.4 %	29-110	"	"	"

Origins Laboratory, Inc.



Jen Pellegrini For Noelle Doyle Mathis, President

The results in this report apply to the samples analyzed in accordance with the chain of custody document. This analytical report must be reproduced in its entirety.

Eagle Environmental Consulting, Inc.
8000 W 44th Ave
Wheat Ridge CO 80033

Martin C Eckert III
Project Number: [none]
Project: Civitas - Libsack 4-8-27

CS-SS-06@3'

9/6/2022 2:25:00PM

Analyte	Result	Min Detection Limit	Reporting Limit	Units	Dilution	Batch	Prepared	Analyzed	Notes
---------	--------	---------------------	-----------------	-------	----------	-------	----------	----------	-------

Origins Laboratory, Inc.
Y209119-06 (Soil)

DRO/ORO by EPA 8015D

Diesel (C10-C28)	ND	25.0	mg/kg	1	B210819	09/08/2022	09/15/2022	U
Residual Range Organics (C28-C40)	ND	100	"	"	"	"	"	U

Surrogate: o-Terphenyl	84.5 %	50-150	"	"	"
------------------------	--------	--------	---	---	---

GBTEX+TMBs by 8260D

1,2,4-Trimethylbenzene	ND	0.00200	mg/kg	1	B211003	09/10/2022	09/14/2022	U
1,3,5-Trimethylbenzene	ND	0.00200	"	"	"	"	"	U
Benzene	ND	0.00200	"	"	"	"	"	U
Ethylbenzene	ND	0.00200	"	"	"	"	"	U
Toluene	ND	0.00200	"	"	"	"	"	U
Xylenes, total	ND	0.00200	"	"	"	"	"	U
Gasoline Range Hydrocarbons	ND	0.200	"	"	"	"	"	U

Surrogate: 1,2-Dichloroethane-d4	132 %	70-130	"	"	"	S-07
Surrogate: Toluene-d8	100 %	70-130	"	"	"	
Surrogate: 4-Bromofluorobenzene	98.6 %	70-130	"	"	"	

PAH by 8270D-SIM

Origins Laboratory, Inc.



The results in this report apply to the samples analyzed in accordance with the chain of custody document. This analytical report must be reproduced in its entirety.

Jen Pellegrini For Noelle Doyle Mathis, President

Eagle Environmental Consulting, Inc.
8000 W 44th Ave
Wheat Ridge CO 80033

Martin C Eckert III
Project Number: [none]
Project: Civitas - Libsack 4-8-27

CS-SS-06@3'

9/6/2022 2:25:00PM

Analyte	Result	Min Detection Limit	Reporting Limit	Units	Dilution	Batch	Prepared	Analyzed	Notes
---------	--------	---------------------	-----------------	-------	----------	-------	----------	----------	-------

Waypoint Analytical, LLC.
Y209119-06 (Soil)

PAH by 8270D-SIM

1-Methylnaphthalene	ND	0.000364	0.00067	mg/Kg	1	L636990	09/13/2022	09/13/2022
2-Methylnaphthalene	ND	0.000645	0.00067	"	"	"	"	"
Acenaphthene	ND	0.000304	0.00067	"	"	"	"	"
Anthracene	ND	0.000334	0.00067	"	"	"	"	"
Benzo(a)anthracene	0.000938	0.000493	0.00067	"	"	"	"	"
Benzo(a)pyrene	0.00177	0.000468	0.00067	"	"	"	"	"
Benzo(b)fluoranthene	0.000887	0.000585	0.00067	"	"	"	"	"
Benzo(k)fluoranthene	0.00139	0.000437	0.00067	"	"	"	"	"
Chrysene	0.00187	0.000624	0.00067	"	"	"	"	"
Dibenz(a,h)anthracene	ND	0.000614	0.00067	"	"	"	"	"
Fluoranthene	0.00167	0.000394	0.00067	"	"	"	"	"
Fluorene	ND	0.000286	0.00067	"	"	"	"	"
Indeno(1,2,3-cd)pyrene	0.000742	0.000627	0.00067	"	"	"	"	"
Naphthalene	ND	0.000484	0.00067	"	"	"	"	"
Pyrene	0.0024	0.000643	0.00067	"	"	"	"	"

Surrogate: 2-Fluorobiphenyl	55.8 %	33-115	"	"	"
Surrogate: 4-Terphenyl-d14	69.3 %	33-122	"	"	"
Surrogate: Nitrobenzene-d5	55.8 %	29-110	"	"	"

Origins Laboratory, Inc.



Jen Pellegrini For Noelle Doyle Mathis, President

The results in this report apply to the samples analyzed in accordance with the chain of custody document. This analytical report must be reproduced in its entirety.

Eagle Environmental Consulting, Inc.
8000 W 44th Ave
Wheat Ridge CO 80033

Martin C Eckert III
Project Number: [none]
Project: Civitas - Libsack 4-8-27

CS-SS-07@3'

9/6/2022 2:30:00PM

Analyte	Result	Min Detection Limit	Reporting Limit	Units	Dilution	Batch	Prepared	Analyzed	Notes
---------	--------	---------------------	-----------------	-------	----------	-------	----------	----------	-------

Origins Laboratory, Inc.
Y209119-07 (Soil)

DRO/ORO by EPA 8015D

Diesel (C10-C28)	ND	25.0	mg/kg	1	B210819	09/08/2022	09/15/2022	U
Residual Range Organics (C28-C40)	ND	100	"	"	"	"	"	U

Surrogate: o-Terphenyl 80.0 % 50-150 " " "

GBTEX+TMBs by 8260D

1,2,4-Trimethylbenzene	ND	0.00200	mg/kg	1	B211003	09/10/2022	09/14/2022	U
1,3,5-Trimethylbenzene	ND	0.00200	"	"	"	"	"	U
Benzene	ND	0.00200	"	"	"	"	"	U
Ethylbenzene	ND	0.00200	"	"	"	"	"	U
Toluene	ND	0.00200	"	"	"	"	"	U
Xylenes, total	ND	0.00200	"	"	"	"	"	U
Gasoline Range Hydrocarbons	ND	0.200	"	"	"	"	"	U

Surrogate: 1,2-Dichloroethane-d4 135 % 70-130 " " " S-07
Surrogate: Toluene-d8 99.8 % 70-130 " " "
Surrogate: 4-Bromofluorobenzene 99.2 % 70-130 " " "

PAH by 8270D-SIM

Origins Laboratory, Inc.



The results in this report apply to the samples analyzed in accordance with the chain of custody document. This analytical report must be reproduced in its entirety.

Jen Pellegrini For Noelle Doyle Mathis, President

Eagle Environmental Consulting, Inc.
8000 W 44th Ave
Wheat Ridge CO 80033

Martin C Eckert III
Project Number: [none]
Project: Civitas - Libsack 4-8-27

CS-SS-07@3'

9/6/2022 2:30:00PM

Analyte	Result	Min Detection Limit	Reporting Limit	Units	Dilution	Batch	Prepared	Analyzed	Notes
---------	--------	---------------------	-----------------	-------	----------	-------	----------	----------	-------

Waypoint Analytical, LLC.
Y209119-07 (Soil)

PAH by 8270D-SIM

1-Methylnaphthalene	ND	0.000364	0.00067	mg/Kg	1	L636990	09/13/2022	09/13/2022	
2-Methylnaphthalene	ND	0.000645	0.00067	"	"	"	"	"	
Acenaphthene	ND	0.000304	0.00067	"	"	"	"	"	
Anthracene	ND	0.000334	0.00067	"	"	"	"	"	
Benzo(a)anthracene	0.000539	0.000493	0.00067	"	"	"	"	"	J
Benzo(a)pyrene	0.00133	0.000468	0.00067	"	"	"	"	"	
Benzo(b)fluoranthene	0.000847	0.000585	0.00067	"	"	"	"	"	
Benzo(k)fluoranthene	0.000983	0.000437	0.00067	"	"	"	"	"	
Chrysene	0.00124	0.000624	0.00067	"	"	"	"	"	
Dibenz(a,h)anthracene	ND	0.000614	0.00067	"	"	"	"	"	
Fluoranthene	0.00105	0.000394	0.00067	"	"	"	"	"	
Fluorene	ND	0.000286	0.00067	"	"	"	"	"	
Indeno(1,2,3-cd)pyrene	ND	0.000627	0.00067	"	"	"	"	"	
Naphthalene	ND	0.000484	0.00067	"	"	"	"	"	
Pyrene	0.00136	0.000643	0.00067	"	"	"	"	"	

Surrogate: 2-Fluorobiphenyl	54.2 %	33-115	"	"	"
Surrogate: 4-Terphenyl-d14	66.2 %	33-122	"	"	"
Surrogate: Nitrobenzene-d5	55.1 %	29-110	"	"	"

Origins Laboratory, Inc.



Jen Pellegrini For Noelle Doyle Mathis, President

The results in this report apply to the samples analyzed in accordance with the chain of custody document. This analytical report must be reproduced in its entirety.

Eagle Environmental Consulting, Inc.
8000 W 44th Ave
Wheat Ridge CO 80033

Martin C Eckert III
Project Number: [none]
Project: Civitas - Libsack 4-8-27

CS-SS-08@3'

9/6/2022 2:35:00PM

Analyte	Result	Min Detection Limit	Reporting Limit	Units	Dilution	Batch	Prepared	Analyzed	Notes
---------	--------	---------------------	-----------------	-------	----------	-------	----------	----------	-------

Origins Laboratory, Inc.
Y209119-08 (Soil)

DRO/ORO by EPA 8015D

Diesel (C10-C28)	ND	25.0	mg/kg	1	B210819	09/08/2022	09/15/2022	U
Residual Range Organics (C28-C40)	ND	100	"	"	"	"	"	U

Surrogate: o-Terphenyl	85.2 %	50-150	"	"	"
------------------------	--------	--------	---	---	---

GBTEX+TMBs by 8260D

1,2,4-Trimethylbenzene	ND	0.00200	mg/kg	1	B211003	09/10/2022	09/15/2022	U
1,3,5-Trimethylbenzene	ND	0.00200	"	"	"	"	"	U
Benzene	ND	0.00200	"	"	"	"	"	U
Ethylbenzene	ND	0.00200	"	"	"	"	"	U
Toluene	ND	0.00200	"	"	"	"	"	U
Xylenes, total	ND	0.00200	"	"	"	"	"	U
Gasoline Range Hydrocarbons	ND	0.200	"	"	"	"	"	U

Surrogate: 1,2-Dichloroethane-d4	137 %	70-130	"	"	"	S-07
Surrogate: Toluene-d8	98.2 %	70-130	"	"	"	
Surrogate: 4-Bromofluorobenzene	97.6 %	70-130	"	"	"	

PAH by 8270D-SIM

Origins Laboratory, Inc.



The results in this report apply to the samples analyzed in accordance with the chain of custody document. This analytical report must be reproduced in its entirety.

Jen Pellegrini For Noelle Doyle Mathis, President

Eagle Environmental Consulting, Inc.
8000 W 44th Ave
Wheat Ridge CO 80033

Martin C Eckert III
Project Number: [none]
Project: Civitas - Libsack 4-8-27

CS-SS-08@3'

9/6/2022 2:35:00PM

Analyte	Result	Min Detection Limit	Reporting Limit	Units	Dilution	Batch	Prepared	Analyzed	Notes
---------	--------	---------------------	-----------------	-------	----------	-------	----------	----------	-------

Waypoint Analytical, LLC.
Y209119-08 (Soil)

PAH by 8270D-SIM

1-Methylnaphthalene	ND	0.000364	0.00067	mg/Kg	1	L636990	09/13/2022	09/13/2022
2-Methylnaphthalene	ND	0.000645	0.00067	"	"	"	"	"
Acenaphthene	ND	0.000304	0.00067	"	"	"	"	"
Anthracene	ND	0.000334	0.00067	"	"	"	"	"
Benzo(a)anthracene	ND	0.000493	0.00067	"	"	"	"	"
Benzo(a)pyrene	ND	0.000468	0.00067	"	"	"	"	"
Benzo(b)fluoranthene	ND	0.000585	0.00067	"	"	"	"	"
Benzo(k)fluoranthene	ND	0.000437	0.00067	"	"	"	"	"
Chrysene	ND	0.000624	0.00067	"	"	"	"	"
Dibenz(a,h)anthracene	ND	0.000614	0.00067	"	"	"	"	"
Fluoranthene	ND	0.000394	0.00067	"	"	"	"	"
Fluorene	ND	0.000286	0.00067	"	"	"	"	"
Indeno(1,2,3-cd)pyrene	ND	0.000627	0.00067	"	"	"	"	"
Naphthalene	ND	0.000484	0.00067	"	"	"	"	"
Pyrene	ND	0.000643	0.00067	"	"	"	"	"

Surrogate: 2-Fluorobiphenyl	58.2 %	33-115	"	"	"
Surrogate: 4-Terphenyl-d14	75.5 %	33-122	"	"	"
Surrogate: Nitrobenzene-d5	60.9 %	29-110	"	"	"

Origins Laboratory, Inc.



The results in this report apply to the samples analyzed in accordance with the chain of custody document. This analytical report must be reproduced in its entirety.

Jen Pellegrini For Noelle Doyle Mathis, President

Eagle Environmental Consulting, Inc.
8000 W 44th Ave
Wheat Ridge CO 80033

Martin C Eckert III
Project Number: [none]
Project: Civitas - Libsack 4-8-27

CS-SS-09@3'

9/6/2022 2:40:00PM

Analyte	Result	Min Detection Limit	Reporting Limit	Units	Dilution	Batch	Prepared	Analyzed	Notes
---------	--------	---------------------	-----------------	-------	----------	-------	----------	----------	-------

Origins Laboratory, Inc.
Y209119-09 (Soil)

DRO/ORO by EPA 8015D

Diesel (C10-C28)	ND	25.0	mg/kg	1	B210819	09/08/2022	09/15/2022	U
Residual Range Organics (C28-C40)	ND	100	"	"	"	"	"	U

Surrogate: o-Terphenyl 82.5 % 50-150 " " "

GBTEX+TMBs by 8260D

1,2,4-Trimethylbenzene	ND	0.00200	mg/kg	1	B211003	09/10/2022	09/15/2022	U
1,3,5-Trimethylbenzene	ND	0.00200	"	"	"	"	"	U
Benzene	ND	0.00200	"	"	"	"	"	U
Ethylbenzene	ND	0.00200	"	"	"	"	"	U
Toluene	ND	0.00200	"	"	"	"	"	U
Xylenes, total	ND	0.00200	"	"	"	"	"	U
Gasoline Range Hydrocarbons	ND	0.200	"	"	"	"	"	U

Surrogate: 1,2-Dichloroethane-d4 139 % 70-130 " " " S-07
Surrogate: Toluene-d8 96.7 % 70-130 " " "
Surrogate: 4-Bromofluorobenzene 99.5 % 70-130 " " "

PAH by 8270D-SIM

Origins Laboratory, Inc.



The results in this report apply to the samples analyzed in accordance with the chain of custody document. This analytical report must be reproduced in its entirety.

Jen Pellegrini For Noelle Doyle Mathis, President

Eagle Environmental Consulting, Inc.
8000 W 44th Ave
Wheat Ridge CO 80033

Martin C Eckert III
Project Number: [none]
Project: Civitas - Libsack 4-8-27

CS-SS-09@3'

9/6/2022 2:40:00PM

Analyte	Result	Min Detection Limit	Reporting Limit	Units	Dilution	Batch	Prepared	Analyzed	Notes
---------	--------	---------------------	-----------------	-------	----------	-------	----------	----------	-------

Waypoint Analytical, LLC.
Y209119-09 (Soil)

PAH by 8270D-SIM

1-Methylnaphthalene	ND	0.000364	0.00067	mg/Kg	1	L636990	09/13/2022	09/13/2022	
2-Methylnaphthalene	ND	0.000645	0.00067	"	"	"	"	"	
Acenaphthene	ND	0.000304	0.00067	"	"	"	"	"	
Anthracene	ND	0.000334	0.00067	"	"	"	"	"	
Benzo(a)anthracene	0.000501	0.000493	0.00067	"	"	"	"	"	J
Benzo(a)pyrene	0.00171	0.000468	0.00067	"	"	"	"	"	
Benzo(b)fluoranthene	0.000993	0.000585	0.00067	"	"	"	"	"	
Benzo(k)fluoranthene	0.0011	0.000437	0.00067	"	"	"	"	"	
Chrysene	0.00134	0.000624	0.00067	"	"	"	"	"	
Dibenz(a,h)anthracene	ND	0.000614	0.00067	"	"	"	"	"	
Fluoranthene	0.00111	0.000394	0.00067	"	"	"	"	"	
Fluorene	ND	0.000286	0.00067	"	"	"	"	"	
Indeno(1,2,3-cd)pyrene	0.000892	0.000627	0.00067	"	"	"	"	"	
Naphthalene	ND	0.000484	0.00067	"	"	"	"	"	
Pyrene	0.00134	0.000643	0.00067	"	"	"	"	"	

Surrogate: 2-Fluorobiphenyl	59.2 %	33-115	"	"	"
Surrogate: 4-Terphenyl-d14	70 %	33-122	"	"	"
Surrogate: Nitrobenzene-d5	59.2 %	29-110	"	"	"

Origins Laboratory, Inc.



Jen Pellegrini For Noelle Doyle Mathis, President

The results in this report apply to the samples analyzed in accordance with the chain of custody document. This analytical report must be reproduced in its entirety.

Eagle Environmental Consulting, Inc.
8000 W 44th Ave
Wheat Ridge CO 80033

Martin C Eckert III
Project Number: [none]
Project: Civitas - Libsack 4-8-27

CS-SS-10@3'

9/6/2022 2:45:00PM

Analyte	Result	Min Detection Limit	Reporting Limit	Units	Dilution	Batch	Prepared	Analyzed	Notes
---------	--------	---------------------	-----------------	-------	----------	-------	----------	----------	-------

Origins Laboratory, Inc.
Y209119-10 (Soil)

DRO/ORO by EPA 8015D

Diesel (C10-C28)	ND	25.0	mg/kg	1	B210819	09/08/2022	09/15/2022	U
Residual Range Organics (C28-C40)	ND	100	"	"	"	"	"	U

Surrogate: o-Terphenyl	73.5 %	50-150	"	"	"
------------------------	--------	--------	---	---	---

GBTEX+TMBs by 8260D

1,2,4-Trimethylbenzene	ND	0.00200	mg/kg	1	B211003	09/10/2022	09/15/2022	U
1,3,5-Trimethylbenzene	ND	0.00200	"	"	"	"	"	U
Benzene	ND	0.00200	"	"	"	"	"	U
Ethylbenzene	ND	0.00200	"	"	"	"	"	U
Toluene	ND	0.00200	"	"	"	"	"	U
Xylenes, total	ND	0.00200	"	"	"	"	"	U
Gasoline Range Hydrocarbons	ND	0.200	"	"	"	"	"	U

Surrogate: 1,2-Dichloroethane-d4	137 %	70-130	"	"	"	S-07
Surrogate: Toluene-d8	98.8 %	70-130	"	"	"	
Surrogate: 4-Bromofluorobenzene	97.6 %	70-130	"	"	"	

PAH by 8270D-SIM

Origins Laboratory, Inc.



The results in this report apply to the samples analyzed in accordance with the chain of custody document. This analytical report must be reproduced in its entirety.

Jen Pellegrini For Noelle Doyle Mathis, President

Eagle Environmental Consulting, Inc.
8000 W 44th Ave
Wheat Ridge CO 80033

Martin C Eckert III
Project Number: [none]
Project: Civitas - Libsack 4-8-27

CS-SS-10@3'

9/6/2022 2:45:00PM

Analyte	Result	Min Detection Limit	Reporting Limit	Units	Dilution	Batch	Prepared	Analyzed	Notes
---------	--------	---------------------	-----------------	-------	----------	-------	----------	----------	-------

Waypoint Analytical, LLC.
Y209119-10 (Soil)

PAH by 8270D-SIM

1-Methylnaphthalene	ND	0.00182	0.00335	mg/Kg	5	L636990	09/13/2022	09/13/2022
2-Methylnaphthalene	ND	0.00323	0.00335	"	"	"	"	"
Acenaphthene	ND	0.00152	0.00335	"	"	"	"	"
Anthracene	ND	0.00167	0.00335	"	"	"	"	"
Benzo(a)anthracene	ND	0.00247	0.00335	"	"	"	"	"
Benzo(a)pyrene	ND	0.00234	0.00335	"	"	"	"	"
Benzo(b)fluoranthene	ND	0.00293	0.00335	"	"	"	"	"
Benzo(k)fluoranthene	ND	0.00219	0.00335	"	"	"	"	"
Chrysene	ND	0.00312	0.00335	"	"	"	"	"
Dibenz(a,h)anthracene	ND	0.00307	0.00335	"	"	"	"	"
Fluoranthene	ND	0.00197	0.00335	"	"	"	"	"
Fluorene	ND	0.00143	0.00335	"	"	"	"	"
Indeno(1,2,3-cd)pyrene	ND	0.00314	0.00335	"	"	"	"	"
Naphthalene	ND	0.00242	0.00335	"	"	"	"	"
Pyrene	ND	0.00322	0.00335	"	"	"	"	"

Surrogate: 2-Fluorobiphenyl	61.7 %	33-115	"	"	"
Surrogate: 4-Terphenyl-d14	72.6 %	33-122	"	"	"
Surrogate: Nitrobenzene-d5	63 %	29-110	"	"	"

Origins Laboratory, Inc.



The results in this report apply to the samples analyzed in accordance with the chain of custody document. This analytical report must be reproduced in its entirety.

Jen Pellegrini For Noelle Doyle Mathis, President

Eagle Environmental Consulting, Inc.
8000 W 44th Ave
Wheat Ridge CO 80033

Martin C Eckert III
Project Number: [none]
Project: Civitas - Libsack 4-8-27

CS-FS-01@4'

9/6/2022 2:50:00PM

Analyte	Result	Min Detection Limit	Reporting Limit	Units	Dilution	Batch	Prepared	Analyzed	Notes
---------	--------	---------------------	-----------------	-------	----------	-------	----------	----------	-------

Origins Laboratory, Inc.
Y209119-11 (Soil)

DRO/ORO by EPA 8015D

Diesel (C10-C28)	ND	25.0	mg/kg	1	B210819	09/08/2022	09/15/2022	U
Residual Range Organics (C28-C40)	ND	100	"	"	"	"	"	U

Surrogate: o-Terphenyl 84.7 % 50-150 " " "

GBTEX+TMBs by 8260D

1,2,4-Trimethylbenzene	ND	0.00200	mg/kg	1	B211003	09/10/2022	09/15/2022	U
1,3,5-Trimethylbenzene	ND	0.00200	"	"	"	"	"	U
Benzene	ND	0.00200	"	"	"	"	"	U
Ethylbenzene	ND	0.00200	"	"	"	"	"	U
Toluene	ND	0.00200	"	"	"	"	"	U
Xylenes, total	ND	0.00200	"	"	"	"	"	U
Gasoline Range Hydrocarbons	ND	0.200	"	"	"	"	"	U

Surrogate: 1,2-Dichloroethane-d4 135 % 70-130 " " " S-07
Surrogate: Toluene-d8 99.2 % 70-130 " " "
Surrogate: 4-Bromofluorobenzene 98.4 % 70-130 " " "

PAH by 8270D-SIM

Origins Laboratory, Inc.



The results in this report apply to the samples analyzed in accordance with the chain of custody document. This analytical report must be reproduced in its entirety.

Jen Pellegrini For Noelle Doyle Mathis, President

Eagle Environmental Consulting, Inc.
8000 W 44th Ave
Wheat Ridge CO 80033

Martin C Eckert III
Project Number: [none]
Project: Civitas - Libsack 4-8-27

CS-FS-01@4'

9/6/2022 2:50:00PM

Analyte	Result	Min Detection Limit	Reporting Limit	Units	Dilution	Batch	Prepared	Analyzed	Notes
---------	--------	---------------------	-----------------	-------	----------	-------	----------	----------	-------

Waypoint Analytical, LLC.
Y209119-11 (Soil)

PAH by 8270D-SIM

1-Methylnaphthalene	ND	0.000364	0.00067	mg/Kg	1	L636990	09/13/2022	09/13/2022
2-Methylnaphthalene	ND	0.000645	0.00067	"	"	"	"	"
Acenaphthene	ND	0.000304	0.00067	"	"	"	"	"
Anthracene	ND	0.000334	0.00067	"	"	"	"	"
Benzo(a)anthracene	ND	0.000493	0.00067	"	"	"	"	"
Benzo(a)pyrene	ND	0.000468	0.00067	"	"	"	"	"
Benzo(b)fluoranthene	ND	0.000585	0.00067	"	"	"	"	"
Benzo(k)fluoranthene	ND	0.000437	0.00067	"	"	"	"	"
Chrysene	ND	0.000624	0.00067	"	"	"	"	"
Dibenz(a,h)anthracene	ND	0.000614	0.00067	"	"	"	"	"
Fluoranthene	ND	0.000394	0.00067	"	"	"	"	"
Fluorene	ND	0.000286	0.00067	"	"	"	"	"
Indeno(1,2,3-cd)pyrene	ND	0.000627	0.00067	"	"	"	"	"
Naphthalene	ND	0.000484	0.00067	"	"	"	"	"
Pyrene	ND	0.000643	0.00067	"	"	"	"	"

Surrogate: 2-Fluorobiphenyl	56.2 %	33-115	"	"	"
Surrogate: 4-Terphenyl-d14	68.7 %	33-122	"	"	"
Surrogate: Nitrobenzene-d5	56.2 %	29-110	"	"	"

Origins Laboratory, Inc.



The results in this report apply to the samples analyzed in accordance with the chain of custody document. This analytical report must be reproduced in its entirety.

Jen Pellegrini For Noelle Doyle Mathis, President

Eagle Environmental Consulting, Inc.
8000 W 44th Ave
Wheat Ridge CO 80033

Martin C Eckert III
Project Number: [none]
Project: Civitas - Libsack 4-8-27

CS-FS-02@4'

9/6/2022 2:55:00PM

Analyte	Result	Min Detection Limit	Reporting Limit	Units	Dilution	Batch	Prepared	Analyzed	Notes
---------	--------	---------------------	-----------------	-------	----------	-------	----------	----------	-------

Origins Laboratory, Inc.
Y209119-12 (Soil)

DRO/ORO by EPA 8015D

Diesel (C10-C28)	ND	25.0	mg/kg	1	B210819	09/08/2022	09/15/2022	U
Residual Range Organics (C28-C40)	ND	100	"	"	"	"	"	U

Surrogate: o-Terphenyl	78.4 %	50-150	"	"	"	"	"	"
------------------------	--------	--------	---	---	---	---	---	---

GBTEX+TMBs by 8260D

1,2,4-Trimethylbenzene	ND	0.00200	mg/kg	1	B211003	09/10/2022	09/15/2022	U
1,3,5-Trimethylbenzene	ND	0.00200	"	"	"	"	"	U
Benzene	ND	0.00200	"	"	"	"	"	U
Ethylbenzene	ND	0.00200	"	"	"	"	"	U
Toluene	ND	0.00200	"	"	"	"	"	U
Xylenes, total	ND	0.00200	"	"	"	"	"	U
Gasoline Range Hydrocarbons	ND	0.200	"	"	"	"	"	U

Surrogate: 1,2-Dichloroethane-d4	142 %	70-130	"	"	"	"	"	S-07
Surrogate: Toluene-d8	99.1 %	70-130	"	"	"	"	"	"
Surrogate: 4-Bromofluorobenzene	99.8 %	70-130	"	"	"	"	"	"

PAH by 8270D-SIM

Origins Laboratory, Inc.



The results in this report apply to the samples analyzed in accordance with the chain of custody document. This analytical report must be reproduced in its entirety.

Jen Pellegrini For Noelle Doyle Mathis, President

Eagle Environmental Consulting, Inc.
8000 W 44th Ave
Wheat Ridge CO 80033

Martin C Eckert III
Project Number: [none]
Project: Civitas - Libsack 4-8-27

CS-FS-02@4'

9/6/2022 2:55:00PM

Analyte	Result	Min Detection Limit	Reporting Limit	Units	Dilution	Batch	Prepared	Analyzed	Notes
---------	--------	---------------------	-----------------	-------	----------	-------	----------	----------	-------

Waypoint Analytical, LLC.
Y209119-12 (Soil)

PAH by 8270D-SIM

1-Methylnaphthalene	ND	0.00182	0.00335	mg/Kg	5	L636990	09/13/2022	09/13/2022	
2-Methylnaphthalene	ND	0.00323	0.00335	"	"	"	"	"	
Acenaphthene	ND	0.00152	0.00335	"	"	"	"	"	
Anthracene	ND	0.00167	0.00335	"	"	"	"	"	
Benzo(a)anthracene	ND	0.00247	0.00335	"	"	"	"	"	
Benzo(a)pyrene	0.00238	0.00234	0.00335	"	"	"	"	"	J
Benzo(b)fluoranthene	ND	0.00293	0.00335	"	"	"	"	"	
Benzo(k)fluoranthene	ND	0.00219	0.00335	"	"	"	"	"	
Chrysene	ND	0.00312	0.00335	"	"	"	"	"	
Dibenz(a,h)anthracene	ND	0.00307	0.00335	"	"	"	"	"	
Fluoranthene	ND	0.00197	0.00335	"	"	"	"	"	
Fluorene	ND	0.00143	0.00335	"	"	"	"	"	
Indeno(1,2,3-cd)pyrene	ND	0.00314	0.00335	"	"	"	"	"	
Naphthalene	ND	0.00242	0.00335	"	"	"	"	"	
Pyrene	ND	0.00322	0.00335	"	"	"	"	"	

Surrogate: 2-Fluorobiphenyl	66.5 %	33-115	"	"	"
Surrogate: 4-Terphenyl-d14	77.2 %	33-122	"	"	"
Surrogate: Nitrobenzene-d5	66.2 %	29-110	"	"	"

Origins Laboratory, Inc.



The results in this report apply to the samples analyzed in accordance with the chain of custody document. This analytical report must be reproduced in its entirety.

Jen Pellegrini For Noelle Doyle Mathis, President

Eagle Environmental Consulting, Inc.
8000 W 44th Ave
Wheat Ridge CO 80033

Martin C Eckert III
Project Number: [none]
Project: Civitas - Libsack 4-8-27

CS-FS-03@4'

9/6/2022 3:00:00PM

Analyte	Result	Min Detection Limit	Reporting Limit	Units	Dilution	Batch	Prepared	Analyzed	Notes
---------	--------	---------------------	-----------------	-------	----------	-------	----------	----------	-------

Origins Laboratory, Inc.
Y209119-13 (Soil)

DRO/ORO by EPA 8015D

Diesel (C10-C28)	ND	25.0	mg/kg	1	B210819	09/08/2022	09/15/2022	U
Residual Range Organics (C28-C40)	ND	100	"	"	"	"	"	U

Surrogate: o-Terphenyl 85.6 % 50-150 " " "

GBTEX+TMBs by 8260D

1,2,4-Trimethylbenzene	ND	0.00200	mg/kg	1	B211003	09/10/2022	09/15/2022	U
1,3,5-Trimethylbenzene	ND	0.00200	"	"	"	"	"	U
Benzene	ND	0.00200	"	"	"	"	"	U
Ethylbenzene	ND	0.00200	"	"	"	"	"	U
Toluene	ND	0.00200	"	"	"	"	"	U
Xylenes, total	ND	0.00200	"	"	"	"	"	U
Gasoline Range Hydrocarbons	ND	0.200	"	"	"	"	"	U

Surrogate: 1,2-Dichloroethane-d4 142 % 70-130 " " " S-07
Surrogate: Toluene-d8 98.7 % 70-130 " " "
Surrogate: 4-Bromofluorobenzene 100 % 70-130 " " "

PAH by 8270D-SIM

Origins Laboratory, Inc.



The results in this report apply to the samples analyzed in accordance with the chain of custody document. This analytical report must be reproduced in its entirety.

Jen Pellegrini For Noelle Doyle Mathis, President

Eagle Environmental Consulting, Inc.
8000 W 44th Ave
Wheat Ridge CO 80033

Martin C Eckert III
Project Number: [none]
Project: Civitas - Libsack 4-8-27

CS-FS-03@4'

9/6/2022 3:00:00PM

Analyte	Result	Min Detection Limit	Reporting Limit	Units	Dilution	Batch	Prepared	Analyzed	Notes
---------	--------	---------------------	-----------------	-------	----------	-------	----------	----------	-------

Waypoint Analytical, LLC.
Y209119-13 (Soil)

PAH by 8270D-SIM

1-Methylnaphthalene	ND	0.000364	0.00067	mg/Kg	1	L636990	09/13/2022	09/13/2022
2-Methylnaphthalene	ND	0.000645	0.00067	"	"	"	"	"
Acenaphthene	ND	0.000304	0.00067	"	"	"	"	"
Anthracene	ND	0.000334	0.00067	"	"	"	"	"
Benzo(a)anthracene	ND	0.000493	0.00067	"	"	"	"	"
Benzo(a)pyrene	ND	0.000468	0.00067	"	"	"	"	"
Benzo(b)fluoranthene	ND	0.000585	0.00067	"	"	"	"	"
Benzo(k)fluoranthene	ND	0.000437	0.00067	"	"	"	"	"
Chrysene	ND	0.000624	0.00067	"	"	"	"	"
Dibenz(a,h)anthracene	ND	0.000614	0.00067	"	"	"	"	"
Fluoranthene	ND	0.000394	0.00067	"	"	"	"	"
Fluorene	ND	0.000286	0.00067	"	"	"	"	"
Indeno(1,2,3-cd)pyrene	ND	0.000627	0.00067	"	"	"	"	"
Naphthalene	ND	0.000484	0.00067	"	"	"	"	"
Pyrene	ND	0.000643	0.00067	"	"	"	"	"

Surrogate: 2-Fluorobiphenyl	65.6 %	33-115	"	"	"
Surrogate: 4-Terphenyl-d14	79.4 %	33-122	"	"	"
Surrogate: Nitrobenzene-d5	66.9 %	29-110	"	"	"

Origins Laboratory, Inc.



The results in this report apply to the samples analyzed in accordance with the chain of custody document. This analytical report must be reproduced in its entirety.

Jen Pellegrini For Noelle Doyle Mathis, President

Eagle Environmental Consulting, Inc.
8000 W 44th Ave
Wheat Ridge CO 80033

Martin C Eckert III
Project Number: [none]
Project: Civitas - Libsack 4-8-27

CS-FS-04@4'

9/6/2022 3:05:00PM

Analyte	Result	Min Detection Limit	Reporting Limit	Units	Dilution	Batch	Prepared	Analyzed	Notes
---------	--------	---------------------	-----------------	-------	----------	-------	----------	----------	-------

Origins Laboratory, Inc.
Y209119-14 (Soil)

DRO/ORO by EPA 8015D

Diesel (C10-C28)	ND	25.0	mg/kg	1	B210819	09/08/2022	09/15/2022	U
Residual Range Organics (C28-C40)	ND	100	"	"	"	"	"	U

Surrogate: o-Terphenyl	77.5 %	50-150	"	"	"
------------------------	--------	--------	---	---	---

GBTEX+TMBs by 8260D

1,2,4-Trimethylbenzene	ND	0.00200	mg/kg	1	B211003	09/10/2022	09/15/2022	U
1,3,5-Trimethylbenzene	ND	0.00200	"	"	"	"	"	U
Benzene	ND	0.00200	"	"	"	"	"	U
Ethylbenzene	ND	0.00200	"	"	"	"	"	U
Toluene	ND	0.00200	"	"	"	"	"	U
Xylenes, total	ND	0.00200	"	"	"	"	"	U
Gasoline Range Hydrocarbons	ND	0.200	"	"	"	"	"	U

Surrogate: 1,2-Dichloroethane-d4	145 %	70-130	"	"	"	S-07
Surrogate: Toluene-d8	97.3 %	70-130	"	"	"	
Surrogate: 4-Bromofluorobenzene	99.6 %	70-130	"	"	"	

PAH by 8270D-SIM

Origins Laboratory, Inc.



The results in this report apply to the samples analyzed in accordance with the chain of custody document. This analytical report must be reproduced in its entirety.

Jen Pellegrini For Noelle Doyle Mathis, President

Eagle Environmental Consulting, Inc.
8000 W 44th Ave
Wheat Ridge CO 80033

Martin C Eckert III
Project Number: [none]
Project: Civitas - Libsack 4-8-27

CS-FS-04@4'

9/6/2022 3:05:00PM

Analyte	Result	Min Detection Limit	Reporting Limit	Units	Dilution	Batch	Prepared	Analyzed	Notes
---------	--------	---------------------	-----------------	-------	----------	-------	----------	----------	-------

Waypoint Analytical, LLC.
Y209119-14 (Soil)

PAH by 8270D-SIM

1-Methylnaphthalene	ND	0.000364	0.00067	mg/Kg	1	L636990	09/13/2022	09/13/2022
2-Methylnaphthalene	ND	0.000645	0.00067	"	"	"	"	"
Acenaphthene	ND	0.000304	0.00067	"	"	"	"	"
Anthracene	ND	0.000334	0.00067	"	"	"	"	"
Benzo(a)anthracene	0.000828	0.000493	0.00067	"	"	"	"	"
Benzo(a)pyrene	0.00234	0.000468	0.00067	"	"	"	"	"
Benzo(b)fluoranthene	0.00118	0.000585	0.00067	"	"	"	"	"
Benzo(k)fluoranthene	0.00155	0.000437	0.00067	"	"	"	"	"
Chrysene	0.00207	0.000624	0.00067	"	"	"	"	"
Dibenz(a,h)anthracene	ND	0.000614	0.00067	"	"	"	"	"
Fluoranthene	0.0017	0.000394	0.00067	"	"	"	"	"
Fluorene	ND	0.000286	0.00067	"	"	"	"	"
Indeno(1,2,3-cd)pyrene	0.0014	0.000627	0.00067	"	"	"	"	"
Naphthalene	ND	0.000484	0.00067	"	"	"	"	"
Pyrene	0.0022	0.000643	0.00067	"	"	"	"	"

Surrogate: 2-Fluorobiphenyl	65.6 %	33-115	"	"	"
Surrogate: 4-Terphenyl-d14	74 %	33-122	"	"	"
Surrogate: Nitrobenzene-d5	65.6 %	29-110	"	"	"

Origins Laboratory, Inc.



The results in this report apply to the samples analyzed in accordance with the chain of custody document. This analytical report must be reproduced in its entirety.

Jen Pellegrini For Noelle Doyle Mathis, President

Eagle Environmental Consulting, Inc.
8000 W 44th Ave
Wheat Ridge CO 80033

Martin C Eckert III
Project Number: [none]
Project: Civitas - Libsack 4-8-27

Extractable Petroleum Hydrocarbons by 8015D - Quality Control Origins Laboratory, Inc.

Analyte	Result	Reporting Limit	Units	Spike Level	Source Result	%REC	%REC Limits	RPD	RPD Limit	Notes
Batch B2I0819 - EPA 3580										
Blank (B2I0819-BLK1)					Prepared: 09/08/2022 Analyzed: 09/15/2022					
Diesel (C10-C28)	ND	25.0	mg/kg							U
Residual Range Organics (C28-C40)	ND	100	"							U
Surrogate: o-Terphenyl	23		"	24.9		93.2	50-150			

Origins Laboratory, Inc.



Jen Pellegrini For Noelle Doyle Mathis, President

The results in this report apply to the samples analyzed in accordance with the chain of custody document. This analytical report must be reproduced in its entirety.

Eagle Environmental Consulting, Inc.
8000 W 44th Ave
Wheat Ridge CO 80033

Martin C Eckert III
Project Number: [none]
Project: Civitas - Libsack 4-8-27

Extractable Petroleum Hydrocarbons by 8015D - Quality Control
Origins Laboratory, Inc.

Analyte	Result	Reporting Limit	Units	Spike Level	Source Result	%REC	%REC Limits	RPD	RPD Limit	Notes
---------	--------	-----------------	-------	-------------	---------------	------	-------------	-----	-----------	-------

Batch B2I0819 - EPA 3580

LCS (B2I0819-BS1)

Prepared: 09/08/2022 Analyzed: 09/15/2022

Diesel (C10-C28)	883	50.0	mg/kg	1000		88.3	70-130			
Residual Range Organics (C28-C40)	980	200	"	1000		98.0	70-130			
Surrogate: o-Terphenyl	45		"	49.8		90.4	50-150			

Origins Laboratory, Inc.



Jen Pellegrini For Noelle Doyle Mathis, President

The results in this report apply to the samples analyzed in accordance with the chain of custody document. This analytical report must be reproduced in its entirety.

Eagle Environmental Consulting, Inc.
8000 W 44th Ave
Wheat Ridge CO 80033

Martin C Eckert III
Project Number: [none]
Project: Civitas - Libsack 4-8-27

Extractable Petroleum Hydrocarbons by 8015D - Quality Control Origins Laboratory, Inc.

Analyte	Result	Reporting Limit	Units	Spike Level	Source Result	%REC	%REC Limits	RPD	RPD Limit	Notes
---------	--------	-----------------	-------	-------------	---------------	------	-------------	-----	-----------	-------

Batch B2I0819 - EPA 3580

Matrix Spike (B2I0819-MS1)		Source: Y209119-01			Prepared: 09/08/2022 Analyzed: 09/15/2022					
Diesel (C10-C28)	899	50.0	mg/kg	1000	ND	89.9	70-130			
Residual Range Organics (C28-C40)	1030	200	"	1000	ND	103	70-130			
Surrogate: o-Terphenyl	42		"	49.8		84.4	50-150			

Origins Laboratory, Inc.



Jen Pellegrini For Noelle Doyle Mathis, President

The results in this report apply to the samples analyzed in accordance with the chain of custody document. This analytical report must be reproduced in its entirety.

Eagle Environmental Consulting, Inc.
8000 W 44th Ave
Wheat Ridge CO 80033

Martin C Eckert III
Project Number: [none]
Project: Civitas - Libsack 4-8-27

Extractable Petroleum Hydrocarbons by 8015D - Quality Control Origins Laboratory, Inc.

Analyte	Result	Reporting Limit	Units	Spike Level	Source Result	%REC	%REC Limits	RPD	RPD Limit	Notes
---------	--------	-----------------	-------	-------------	---------------	------	-------------	-----	-----------	-------

Batch B2I0819 - EPA 3580

Matrix Spike Dup (B2I0819-MSD1)		Source: Y209119-01			Prepared: 09/08/2022 Analyzed: 09/15/2022					
Diesel (C10-C28)	902	50.0	mg/kg	1000	ND	90.2	70-130	0.364	35	
Residual Range Organics (C28-C40)	1030	200	"	1000	ND	103	70-130	0.0153	35	
Surrogate: o-Terphenyl	51		"	49.8		103	50-150			

Origins Laboratory, Inc.



Jen Pellegrini For Noelle Doyle Mathis, President

The results in this report apply to the samples analyzed in accordance with the chain of custody document. This analytical report must be reproduced in its entirety.

Eagle Environmental Consulting, Inc.
8000 W 44th Ave
Wheat Ridge CO 80033

Martin C Eckert III
Project Number: [none]
Project: Civitas - Libsack 4-8-27

Extractable Petroleum Hydrocarbons by 8015D - Quality Control

Origins Laboratory, Inc.

Analyte	Result	Reporting Limit	Units	Spike Level	Source Result	%REC	%REC Limits	RPD	RPD Limit	Notes
Batch B2I1003 - EPA 5030 (soil)										
Blank (B2I1003-BLK1)					Prepared: 09/10/2022 Analyzed: 09/14/2022					
1,2,4-Trimethylbenzene	ND	0.00200	mg/kg							U
1,3,5-Trimethylbenzene	ND	0.00200	"							U
Benzene	ND	0.00200	"							U
Ethylbenzene	ND	0.00200	"							U
Naphthalene	ND	0.00380	"							U
Toluene	ND	0.00200	"							U
Xylenes, total	ND	0.00200	"							U
Gasoline Range Hydrocarbons	ND	0.200	"							U
Surrogate: 1,2-Dichloroethane-d4	0.14		"	0.125	113		70-130			
Surrogate: Toluene-d8	0.13		"	0.125	102		70-130			
Surrogate: 4-Bromofluorobenzene	0.12		"	0.125	99.5		70-130			

Origins Laboratory, Inc.



Jen Pellegrini For Noelle Doyle Mathis, President

The results in this report apply to the samples analyzed in accordance with the chain of custody document. This analytical report must be reproduced in its entirety.

Eagle Environmental Consulting, Inc.
8000 W 44th Ave
Wheat Ridge CO 80033

Martin C Eckert III
Project Number: [none]
Project: Civitas - Libsack 4-8-27

Volatile Organic Compounds by GC/MS SW846 8260D - Quality Control
Origins Laboratory, Inc.

Analyte	Result	Reporting Limit	Units	Spike Level	Source Result	%REC	%REC Limits	RPD	RPD Limit	Notes
Batch B2I1003 - EPA 5030 (soil)										
LCS (B2I1003-BS1)					Prepared: 09/10/2022 Analyzed: 09/14/2022					
1,2,4-Trimethylbenzene	0.101	0.00200	mg/kg	0.100		101	70-130			
1,3,5-Trimethylbenzene	0.103	0.00200	"	0.100		103	70-130			
Benzene	0.110	0.00200	"	0.100		110	70-130			
Ethylbenzene	0.103	0.00200	"	0.100		103	70-130			
Naphthalene	0.0897	0.00380	"	0.100		89.7	70-130			
Toluene	0.113	0.00200	"	0.100		113	70-130			
o-Xylene	0.106	0.00200	"	0.100		106	70-130			
m,p-Xylene	0.209	0.00400	"	0.200		105	70-130			
Surrogate: 1,2-Dichloroethane-d4	0.15		"	0.125		117	70-130			
Surrogate: Toluene-d8	0.13		"	0.125		104	70-130			
Surrogate: 4-Bromofluorobenzene	0.12		"	0.125		97.8	70-130			

Origins Laboratory, Inc.



Jen Pellegrini For Noelle Doyle Mathis, President

The results in this report apply to the samples analyzed in accordance with the chain of custody document. This analytical report must be reproduced in its entirety.

Eagle Environmental Consulting, Inc.
8000 W 44th Ave
Wheat Ridge CO 80033

Martin C Eckert III
Project Number: [none]
Project: Civitas - Libsack 4-8-27

Volatile Organic Compounds by GC/MS SW846 8260D - Quality Control
Origins Laboratory, Inc.

Analyte	Result	Reporting Limit	Units	Spike Level	Source Result	%REC	%REC Limits	RPD	RPD Limit	Notes
---------	--------	-----------------	-------	-------------	---------------	------	-------------	-----	-----------	-------

Batch B2I1003 - EPA 5030 (soil)

Matrix Spike (B2I1003-MS1)		Source: Y209119-01			Prepared: 09/10/2022 Analyzed: 09/14/2022					
1,2,4-Trimethylbenzene	0.0807	0.00200	mg/kg	0.100	0.000620	80.1	70-130			
1,3,5-Trimethylbenzene	0.0830	0.00200	"	0.100	0.000480	82.5	70-130			
Benzene	0.0968	0.00200	"	0.100	ND	96.8	70-130			
Ethylbenzene	0.0847	0.00200	"	0.100	ND	84.7	70-130			
Naphthalene	0.0761	0.00380	"	0.100	0.00176	74.4	70-130			
Toluene	0.0982	0.00200	"	0.100	ND	98.2	70-130			
o-Xylene	0.0892	0.00200	"	0.100	0.000460	88.7	70-130			
m,p-Xylene	0.169	0.00400	"	0.200	0.00128	83.9	70-130			
Surrogate: 1,2-Dichloroethane-d4	0.15		"	0.125		118	70-130			
Surrogate: Toluene-d8	0.13		"	0.125		102	70-130			
Surrogate: 4-Bromofluorobenzene	0.12		"	0.125		97.4	70-130			

Origins Laboratory, Inc.



Jen Pellegrini For Noelle Doyle Mathis, President

The results in this report apply to the samples analyzed in accordance with the chain of custody document. This analytical report must be reproduced in its entirety.

Eagle Environmental Consulting, Inc.
8000 W 44th Ave
Wheat Ridge CO 80033

Martin C Eckert III
Project Number: [none]
Project: Civitas - Libsack 4-8-27

Volatile Organic Compounds by GC/MS SW846 8260D - Quality Control
Origins Laboratory, Inc.

Analyte	Result	Reporting Limit	Units	Spike Level	Source Result	%REC	%REC Limits	RPD	RPD Limit	Notes
Batch B2I1003 - EPA 5030 (soil)										
Matrix Spike Dup (B2I1003-MSD1)		Source: Y209119-01			Prepared: 09/10/2022 Analyzed: 09/14/2022					
1,2,4-Trimethylbenzene	0.0781	0.00200	mg/kg	0.100	0.000620	77.5	70-130	3.30	20	
1,3,5-Trimethylbenzene	0.0792	0.00200	"	0.100	0.000480	78.7	70-130	4.64	20	
Benzene	0.0956	0.00200	"	0.100	ND	95.6	70-130	1.27	20	
Ethylbenzene	0.0816	0.00200	"	0.100	ND	81.6	70-130	3.70	20	
Naphthalene	0.0801	0.00380	"	0.100	0.00176	78.4	70-130	5.12	20	
Toluene	0.0958	0.00200	"	0.100	ND	95.8	70-130	2.49	20	
o-Xylene	0.0865	0.00200	"	0.100	0.000460	86.0	70-130	3.10	20	
m,p-Xylene	0.162	0.00400	"	0.200	0.00128	80.6	70-130	4.01	20	
Surrogate: 1,2-Dichloroethane-d4	0.15		"	0.125		122	70-130			
Surrogate: Toluene-d8	0.13		"	0.125		101	70-130			
Surrogate: 4-Bromofluorobenzene	0.12		"	0.125		97.2	70-130			

Origins Laboratory, Inc.



Jen Pellegrini For Noelle Doyle Mathis, President

The results in this report apply to the samples analyzed in accordance with the chain of custody document. This analytical report must be reproduced in its entirety.

Eagle Environmental Consulting, Inc.
8000 W 44th Ave
Wheat Ridge CO 80033

Martin C Eckert III
Project Number: [none]
Project: Civitas - Libsack 4-8-27

Volatile Organic Compounds by GC/MS SW846 8260D - Quality Control
Origins Laboratory, Inc.

Analyte	Result	Reporting Limit	Units	Spike Level	Source Result	%REC	%REC Limits	RPD	RPD Limit	Notes
---------	--------	-----------------	-------	-------------	---------------	------	-------------	-----	-----------	-------

PAH by 8270D SIM - Quality Control
Waypoint Analytical, LLC.

Analyte	Result	Reporting Limit	Units	Spike Level	Source Result	%REC	%REC Limits	RPD	RPD Limit	Notes
---------	--------	-----------------	-------	-------------	---------------	------	-------------	-----	-----------	-------

Batch L636873 - 3550B

MSD (L 81612-MSD-L636873)		Source: 81612			Prepared: 09/12/2022 Analyzed: 09/12/2022					
2-Methylnaphthalene	0.0892	0.00067	mg/Kg	0.166	<0.000645	53.7	30-130	4.1	30	
Acenaphthene	0.092	0.00067	"	0.166	<0.000304	55.4	30-130	4.4	30	
Anthracene	0.106	0.00067	"	0.166	<0.000334	63.8	30-130	7.2	30	
Benzo(a)anthracene	0.112	0.00067	"	0.166	<0.000493	67.4	30-130	2.6	30	
Naphthalene	0.0867	0.00067	"	0.166	<0.000484	52.2	30-130	3.2	30	
Pyrene	0.114	0.00067	"	0.166	<0.000643	68.6	30-130	2.5	30	
Benzo(k)fluoranthene	0.115	0.00067	"	0.166	0.000511	68.9	30-130	2.5	30	
Chrysene	0.113	0.00067	"	0.166	<0.000624	68	30-130	1.7	30	
Dibenz(a,h)anthracene	0.142	0.00067	"	0.166	<0.000614	85.5	30-130	6.1	30	
Fluoranthene	0.115	0.00067	"	0.166	<0.000394	69.2	30-130	3.4	30	
Fluorene	0.0998	0.00067	"	0.166	<0.000286	60.1	30-130	3.1	30	
Indeno(1,2,3-cd)pyrene	0.134	0.00067	"	0.166	0.000749	80.2	30-130	5	30	
1-Methylnaphthalene	0.0882	0.00067	"	0.166	<0.000364	53.1	30-130	5.9	30	
Benzo(a)pyrene	0.127	0.00067	"	0.166	0.000482	76.2	30-130	2.3	30	
Benzo(b)fluoranthene	0.121	0.00067	"	0.166	0.00116	72.1	30-130	3.2	30	
Surrogate: Nitrobenzene-d5	47.8		"	0.332	181	47.8	29-110			
Surrogate: 2-Fluorobiphenyl	46.9		"	0.332	175	46.9	33-115			
Surrogate: 4-Terphenyl-d14	62		"	0.332	210	62	33-122			

MS (L 81612-MS-L636873)		Source: 81612			Prepared: 09/12/2022 Analyzed: 09/12/2022					
Benzo(a)pyrene	0.13	0.00067	mg/Kg	0.166	0.000482	78	30-130			
Benzo(b)fluoranthene	0.125	0.00067	"	0.166	0.00116	74.6	30-130			

Origins Laboratory, Inc.



The results in this report apply to the samples analyzed in accordance with the chain of custody document. This analytical report must be reproduced in its entirety.

Jen Pellegrini For Noelle Doyle Mathis, President

Eagle Environmental Consulting, Inc.
8000 W 44th Ave
Wheat Ridge CO 80033

Martin C Eckert III
Project Number: [none]
Project: Civitas - Libsack 4-8-27

PAH by 8270D SIM - Quality Control
Waypoint Analytical, LLC.

Analyte	Result	Reporting Limit	Units	Spike Level	Source Result	%REC	%REC Limits	RPD	RPD Limit	Notes
---------	--------	-----------------	-------	-------------	---------------	------	-------------	-----	-----------	-------

Batch L636873 - 3550B

MS (L 81612-MS-L636873)		Source: 81612			Prepared: 09/12/2022 Analyzed: 09/12/2022					
Benzo(k)fluoranthene	0.118	0.00067	mg/Kg	0.166	0.000511	70.7	30-130			
Chrysene	0.115	0.00067	"	0.166	<0.000624	69.2	30-130			
Dibenz(a,h)anthracene	0.151	0.00067	"	0.166	<0.000614	90.9	30-130			
Benzo(a)anthracene	0.115	0.00067	"	0.166	<0.000493	69.2	30-130			
Naphthalene	0.0896	0.00067	"	0.166	<0.000484	53.9	30-130			
Indeno(1,2,3-cd)pyrene	0.141	0.00067	"	0.166	0.000749	84.4	30-130			
Fluoranthene	0.119	0.00067	"	0.166	<0.000394	71.6	30-130			
Anthracene	0.114	0.00067	"	0.166	<0.000334	68.6	30-130			
Acenaphthene	0.0962	0.00067	"	0.166	<0.000304	57.9	30-130			
2-Methylnaphthalene	0.093	0.00067	"	0.166	<0.000645	56	30-130			
1-Methylnaphthalene	0.0936	0.00067	"	0.166	<0.000364	56.3	30-130			
Pyrene	0.117	0.00067	"	0.166	<0.000643	70.4	30-130			
Fluorene	0.103	0.00067	"	0.166	<0.000286	62	30-130			
Surrogate: 2-Fluorobiphenyl	51.3		"	0.331	175	51.3	33-115			
Surrogate: Nitrobenzene-d5	51.3		"	0.331	181	51.3	29-110			
Surrogate: 4-Terphenyl-d14	64.3		"	0.331	210	64.3	33-122			

LCS (LCS-L636873)

Prepared: 09/12/2022 Analyzed: 09/12/2022

Benzo(b)fluoranthene	0.0957	0.00067	mg/Kg	0.167		57.3	30-130
Fluorene	0.0958	0.00067	"	0.167		57.3	30-130
Benzo(a)anthracene	0.104	0.00067	"	0.167		62.2	30-130
1-Methylnaphthalene	0.0881	0.00067	"	0.167		52.7	30-130
Pyrene	0.106	0.00067	"	0.167		63.4	30-130
Indeno(1,2,3-cd)pyrene	0.0906	0.00067	"	0.167		54.2	30-130
Fluoranthene	0.106	0.00067	"	0.167		63.4	30-130
Dibenz(a,h)anthracene	0.0943	0.00067	"	0.167		56.4	30-130
Chrysene	0.101	0.00067	"	0.167		60.4	30-130

Origins Laboratory, Inc.



The results in this report apply to the samples analyzed in accordance with the chain of custody document. This analytical report must be reproduced in its entirety.

Jen Pellegrini For Noelle Doyle Mathis, President

Eagle Environmental Consulting, Inc.
8000 W 44th Ave
Wheat Ridge CO 80033

Martin C Eckert III
Project Number: [none]
Project: Civitas - Libsack 4-8-27

PAH by 8270D SIM - Quality Control
Waypoint Analytical, LLC.

Analyte	Result	Reporting Limit	Units	Spike Level	Source Result	%REC	%REC Limits	RPD	RPD Limit	Notes
---------	--------	-----------------	-------	-------------	---------------	------	-------------	-----	-----------	-------

Batch L636873 - 3550B

LCS (LCS-L636873)

Prepared: 09/12/2022 Analyzed: 09/12/2022

Naphthalene	0.086	0.00067	mg/Kg	0.167		51.4	30-130			
2-Methylnaphthalene	0.0887	0.00067	"	0.167		53.1	30-130			
Benzo(k)fluoranthene	0.11	0.00067	"	0.167		65.8	30-130			
Acenaphthene	0.0904	0.00067	"	0.167		54.1	30-130			
Anthracene	0.102	0.00067	"	0.167		61	30-130			
Benzo(a)pyrene	0.118	0.00067	"	0.167		70.6	30-130			
Surrogate: Nitrobenzene-d5	55.5		"	0.333		55.5	29-110			
Surrogate: 4-Terphenyl-d14	67.5		"	0.333		67.5	33-122			
Surrogate: 2-Fluorobiphenyl	55.5		"	0.333		55.5	33-115			

LRB (LRB-L636873)

Prepared: 09/12/2022 Analyzed: 09/12/2022

Chrysene	ND	0.00067	mg/Kg				-			
1-Methylnaphthalene	ND	0.00067	"				-			
Pyrene	ND	0.00067	"				-			
Naphthalene	ND	0.00067	"				-			
Indeno(1,2,3-cd)pyrene	ND	0.00067	"				-			
Fluorene	ND	0.00067	"				-			
Fluoranthene	ND	0.00067	"				-			
Dibenz(a,h)anthracene	ND	0.00067	"				-			
Benzo(k)fluoranthene	ND	0.00067	"				-			
Benzo(b)fluoranthene	ND	0.00067	"				-			
Benzo(a)pyrene	ND	0.00067	"				-			
Benzo(a)anthracene	ND	0.00067	"				-			
Anthracene	ND	0.00067	"				-			
Acenaphthene	ND	0.00067	"				-			
2-Methylnaphthalene	ND	0.00067	"				-			
Surrogate: Nitrobenzene-d5	55.5		"	0.333		55.5	29-110			

Origins Laboratory, Inc.



The results in this report apply to the samples analyzed in accordance with the chain of custody document. This analytical report must be reproduced in its entirety.

Jen Pellegrini For Noelle Doyle Mathis, President

Eagle Environmental Consulting, Inc.
8000 W 44th Ave
Wheat Ridge CO 80033

Martin C Eckert III
Project Number: [none]
Project: Civitas - Libsack 4-8-27

PAH by 8270D SIM - Quality Control
Waypoint Analytical, LLC.

Analyte	Result	Reporting Limit	Units	Spike Level	Source Result	%REC	%REC Limits	RPD	RPD Limit	Notes
---------	--------	-----------------	-------	-------------	---------------	------	-------------	-----	-----------	-------

Batch L636873 - 3550B

LRB (LRB-L636873)

Prepared: 09/12/2022 Analyzed: 09/12/2022

Surrogate: 4-Terphenyl-d14	66.3		mg/Kg	0.333	66.3		33-122			
Surrogate: 2-Fluorobiphenyl	53.7		"	0.333	53.7		33-115			

Origins Laboratory, Inc.



Jen Pellegrini For Noelle Doyle Mathis, President

The results in this report apply to the samples analyzed in accordance with the chain of custody document. This analytical report must be reproduced in its entirety.

Eagle Environmental Consulting, Inc.
8000 W 44th Ave
Wheat Ridge CO 80033

Martin C Eckert III
Project Number: [none]
Project: Civitas - Libsack 4-8-27

PAH by 8270D-SIM - Quality Control
Waypoint Analytical, LLC.

Analyte	Result	Reporting Limit	Units	Spike Level	Source Result	%REC	%REC Limits	RPD	RPD Limit	Notes
---------	--------	-----------------	-------	-------------	---------------	------	-------------	-----	-----------	-------

Batch L636990 - 3550B

MSD (L 97409-MSD-L636990)		Source: Y209119-12			Prepared: 09/13/2022 Analyzed: 09/13/2022					
Benzo(b)fluoranthene	0.0554	0.00335	mg/Kg	0.167	<0.00293	33.1	30-130	6.5	30	
Fluorene	0.11	0.00335	"	0.167	<0.00143	65.8	30-130	4.6	30	
1-Methylnaphthalene	0.105	0.00335	"	0.167	<0.00182	62.8	30-130	6.1	30	
Pyrene	0.117	0.00335	"	0.167	<0.00322	70	30-130	5.2	30	
Indeno(1,2,3-cd)pyrene	0.158	0.00335	"	0.167	<0.00314	94.6	30-130	6.5	30	
Fluoranthene	0.117	0.00335	"	0.167	<0.00197	70	30-130	6.1	30	
Dibenz(a,h)anthracene	0.159	0.00335	"	0.167	<0.00307	95.2	30-130	0	30	
Chrysene	0.142	0.00335	"	0.167	<0.00312	85	30-130	6.5	30	
2-Methylnaphthalene	0.104	0.00335	"	0.167	<0.00323	62.2	30-130	6.5	30	
Naphthalene	0.102	0.00335	"	0.167	<0.00242	61	30-130	6.7	30	
Benzo(k)fluoranthene	0.105	0.00335	"	0.167	<0.00219	62.8	30-130	2.8	30	
Acenaphthene	0.109	0.00335	"	0.167	<0.00152	65.2	30-130	6.6	30	
Anthracene	0.12	0.00335	"	0.167	<0.00167	71.8	30-130	8.6	30	
Benzo(a)pyrene	0.126	0.00335	"	0.167	0.00238	74	30-130	4.8	30	
Benzo(a)anthracene	0.103	0.00335	"	0.167	<0.00247	61.6	30-130	4.4	30	
Surrogate: Nitrobenzene-d5	61.8		"	0.333	215	61.8	29-110			
Surrogate: 2-Fluorobiphenyl	66		"	0.333	216	66	33-115			
Surrogate: 4-Terphenyl-d14	74.4		"	0.333	251	74.4	33-122			

MS (L 97409-MS-L636990)		Source: Y209119-12			Prepared: 09/13/2022 Analyzed: 09/13/2022					
Benzo(k)fluoranthene	0.102	0.00335	mg/Kg	0.163	<0.00219	62.5	30-130			
Acenaphthene	0.102	0.00335	"	0.163	<0.00152	62.5	30-130			
Naphthalene	0.0953	0.00335	"	0.163	<0.00242	58.4	30-130			
Indeno(1,2,3-cd)pyrene	0.148	0.00335	"	0.163	<0.00314	90.7	30-130			
Fluorene	0.105	0.00335	"	0.163	<0.00143	64.4	30-130			
Fluoranthene	0.11	0.00335	"	0.163	<0.00197	67.4	30-130			
Dibenz(a,h)anthracene	0.159	0.00335	"	0.163	<0.00307	97.5	30-130			

Origins Laboratory, Inc.



Jen Pellegrini For Noelle Doyle Mathis, President

The results in this report apply to the samples analyzed in accordance with the chain of custody document. This analytical report must be reproduced in its entirety.

Eagle Environmental Consulting, Inc.
8000 W 44th Ave
Wheat Ridge CO 80033

Martin C Eckert III
Project Number: [none]
Project: Civitas - Libsack 4-8-27

PAH by 8270D-SIM - Quality Control
Waypoint Analytical, LLC.

Analyte	Result	Reporting Limit	Units	Spike Level	Source Result	%REC	%REC Limits	RPD	RPD Limit	Notes
---------	--------	-----------------	-------	-------------	---------------	------	-------------	-----	-----------	-------

Batch L636990 - 3550B

MS (L 97409-MS-L636990)		Source: Y209119-12			Prepared: 09/13/2022 Analyzed: 09/13/2022					
Chrysene	0.133	0.00335	mg/Kg	0.163	<0.00312	81.5	30-130			
1-Methylnaphthalene	0.0987	0.00335	"	0.163	<0.00182	60.5	30-130			
Benzo(a)pyrene	0.12	0.00335	"	0.163	0.00238	72.1	30-130			
Anthracene	0.11	0.00335	"	0.163	<0.00167	67.4	30-130			
Pyrene	0.111	0.00335	"	0.163	<0.00322	68	30-130			
2-Methylnaphthalene	0.0974	0.00335	"	0.163	<0.00323	59.7	30-130			
Benzo(b)fluoranthene	0.0519	0.00335	"	0.163	<0.00293	31.8	30-130			
Benzo(a)anthracene	0.0985	0.00335	"	0.163	<0.00247	60.4	30-130			
Surrogate: Nitrobenzene-d5	59.5		"	0.326	215	59.5	29-110			
Surrogate: 4-Terphenyl-d14	74.2		"	0.326	251	74.2	33-122			
Surrogate: 2-Fluorobiphenyl	63.8		"	0.326	216	63.8	33-115			

LCS (LCS-L636990)		Prepared: 09/13/2022 Analyzed: 09/13/2022								
Chrysene	0.135	0.00067	mg/Kg	0.167		80.8	30-130			
Dibenz(a,h)anthracene	0.17	0.00067	"	0.167		102	30-130			
Fluoranthene	0.125	0.00067	"	0.167		74.8	30-130			
Fluorene	0.114	0.00067	"	0.167		68.2	30-130			
Indeno(1,2,3-cd)pyrene	0.122	0.00067	"	0.167		73	30-130			
Naphthalene	0.102	0.00067	"	0.167		61	30-130			
Benzo(k)fluoranthene	0.108	0.00067	"	0.167		64.6	30-130			
Pyrene	0.125	0.00067	"	0.167		74.8	30-130			
Benzo(a)pyrene	0.136	0.00067	"	0.167		81.4	30-130			
Benzo(a)anthracene	0.129	0.00067	"	0.167		77.2	30-130			
Anthracene	0.122	0.00067	"	0.167		73	30-130			
Acenaphthene	0.109	0.00067	"	0.167		65.2	30-130			
2-Methylnaphthalene	0.102	0.00067	"	0.167		61	30-130			
1-Methylnaphthalene	0.104	0.00067	"	0.167		62.2	30-130			

Origins Laboratory, Inc.



Jen Pellegrini For Noelle Doyle Mathis, President

The results in this report apply to the samples analyzed in accordance with the chain of custody document. This analytical report must be reproduced in its entirety.

Eagle Environmental Consulting, Inc.
8000 W 44th Ave
Wheat Ridge CO 80033

Martin C Eckert III
Project Number: [none]
Project: Civitas - Libsack 4-8-27

PAH by 8270D-SIM - Quality Control
Waypoint Analytical, LLC.

Analyte	Result	Reporting Limit	Units	Spike Level	Source Result	%REC	%REC Limits	RPD	RPD Limit	Notes
---------	--------	-----------------	-------	-------------	---------------	------	-------------	-----	-----------	-------

Batch L636990 - 3550B

LCS (LCS-L636990)

Prepared: 09/13/2022 Analyzed: 09/13/2022

Benzo(b)fluoranthene	0.0954	0.00067	mg/Kg	0.167		57.1	30-130			
Surrogate: Nitrobenzene-d5	70.2		"	0.333		70.2	29-110			
Surrogate: 4-Terphenyl-d14	92.4		"	0.333		92.4	33-122			
Surrogate: 2-Fluorobiphenyl	70.2		"	0.333		70.2	33-115			

LRB (LRB-L636990)

Prepared: 09/13/2022 Analyzed: 09/13/2022

Chrysene	ND	0.00067	mg/Kg				-			
Dibenz(a,h)anthracene	ND	0.00067	"				-			
Fluoranthene	ND	0.00067	"				-			
Fluorene	ND	0.00067	"				-			
Benzo(k)fluoranthene	ND	0.00067	"				-			
Naphthalene	ND	0.00067	"				-			
Indeno(1,2,3-cd)pyrene	ND	0.00067	"				-			
Benzo(b)fluoranthene	ND	0.00067	"				-			
Benzo(a)pyrene	ND	0.00067	"				-			
Benzo(a)anthracene	ND	0.00067	"				-			
Acenaphthene	ND	0.00067	"				-			
2-Methylnaphthalene	ND	0.00067	"				-			
1-Methylnaphthalene	ND	0.00067	"				-			
Pyrene	ND	0.00067	"				-			
Anthracene	ND	0.00067	"				-			
Surrogate: Nitrobenzene-d5	67.8		"	0.333		67.8	29-110			
Surrogate: 4-Terphenyl-d14	82.5		"	0.333		82.5	33-122			
Surrogate: 2-Fluorobiphenyl	67.2		"	0.333		67.2	33-115			

Origins Laboratory, Inc.



Jen Pellegrini For Noelle Doyle Mathis, President

The results in this report apply to the samples analyzed in accordance with the chain of custody document. This analytical report must be reproduced in its entirety.

Eagle Environmental Consulting, Inc.
8000 W 44th Ave
Wheat Ridge CO 80033

Martin C Eckert III
Project Number: [none]
Project: Civitas - Libsack 4-8-27

Notes and Definitions

U Sample is Non-Detect.

S-07 High surrogate in sample, however sample is non-detect. High surrogate indicates result values are biased high.

J Estimated Value. Analyte below reported quantitation limit.

ND Analyte NOT DETECTED at or above the reporting limit

RPD Relative Percent Difference

All soil results are reported on a wet weight basis.

Origins Laboratory, Inc.



Jen Pellegrini For Noelle Doyle Mathis, President

The results in this report apply to the samples analyzed in accordance with the chain of custody document. This analytical report must be reproduced in its entirety.