



Bayswater Exploration & Production LLC

SURFACE POST JOB REPORT

Topaz East #12 05-123-51537
S:6 T:7N R:65W Weld CO

CallSheet #: 80612
Proposal #: 58626



SURFACE Post Job Report

Attention: Trevor Smith | (720) 335-9045 | trevor.smith@iptenergyservices.com
Bayswater Exploration & Production LLC
730 17TH STREET | DENVER, CO 80202

Dear Trevor Smith,

Thank you for the opportunity to provide cementing services on this well. American Cementing strives to achieve complete customer satisfaction. If you have any questions regarding the services or data provided, please contact American Cementing at any time.

Sincerely,

Jason Creel

Field Engineer Lead | (307) 256-0306 | jason.creel@americacementing.com

Field Office 1716 E Allison Rd, Cheyenne, WY 82007
Phone: (307) 414-0049

Job Details & Summary

Geometry

Type	Function	OD (in)	ID (in)	Weight (lb/ft)	Top (ft)	Bottom (ft)	Excess (%)
Open Hole	Outer		13.5		0	1560	15
Casing	Inner	9.625	8.921	36	0	1550	0

Equipment / People

Unit Type	Unit
Field Storage Silo	FSS(CTS)-459
Cement Trailer Float	CTF-338
Cement Pump Float	CPF-182
Cement Utility Float	CUF(FIF)-161

Timing

Event	Date/Time
Call Out	3/16/2022 19:30
Depart Facility	3/16/2022 22:00
On Location	3/16/2022 23:30
Rig Up Iron	3/17/2022 00:01
Job Started	3/17/2022 03:50
Job Completed	3/17/2022 05:09
Rig Down Iron	3/17/2022 05:30
Depart Location	3/17/2022 07:00

General Job Information

Metrics	Value
Well Fluid Density	9 lb/gal
Well Fluid Type	WBM
Rig Circulation Vol	300 bbls
Rig Circulation Time	0.5 hours
Calculated Displacement	116.33 bbls
Actual Displacement	116 bbls
Total Spacer to Surface	20 bbls
Total CMT to Surface	46 bbls

Casing Equipment

Type	Description	Qty
CENTRALIZER,9-5/8"NON-WELD	Bow Spring	17

Job Details

Metrics	Value
Flare Prior to Job	No
Flare Prior to Job	0 units
Flare During Job	No
Flare During Job	0 units
Flare at End of Job	No
Flare at End of Job	0 units
Well Full Prior to Job	Yes
Well Fluid Density Into Well	9 lb/gal
Well Fluid Density Out of Well	9 lb/gal

Job Details (cont.)

Metrics	Value
BHCT	86 °F
BHST	110 °F

Water Analysis

Metrics	Value	Recommended
Water Source	Upright Rig Tank	
Temperature	60 °F	50-80 °F
pH Level	7	5.5-8.5
Chlorides	0 mg/L	0-3000 mg/L
Total Alkalinity	180	0-1000
Total Hardness	. mg/L	0-500 mg/L
Carbonates	. mg/L	0-100 mg/L
Sulfates	>400 mg/L	0-1500 mg/L
Potassium	0 mg/L	0-3000 mg/L
Iron	1 mg/L	0-300 mg/L

Circulation

Lost Circulation Experienced
No

Job Execution Information

Fluid	Product	Function	Density (lb/gal)	Yield (ft ³ /sk)	Water Rq. (gal/sk)	Water Rq. (gal/bbl)	Volume (sks)	Volume (bbl)	Designed Top (ft)
1	Fresh Water	Flush	8.34			42.00		20.00	0
2	ACem S100.3.1C	Lead	12.00	2.41	14.09		247.00	105.83	0
3	ACem S100.3.1C	Tail	12.50	2.11	11.93		143.00	53.63	1055
4	Fresh Water	DisplacementFinal	8.34			42.00		117.00	0

Job Fluid Details

Fluid	Type	Fluid	Product	Function	Conc.	Uom
2	Lead	ACem S100.3.1C	ASTM TYPE III	Cement	100.00	%
2	Lead	ACem S100.3.1C	A-7P	Accelerator	2.00	lb/sk
2	Lead	ACem S100.3.1C	FP-24	Defoamer	0.30	%BWOB
2	Lead	ACem S100.3.1C	IntegraSeal POLI	LostCirculation	0.13	lb/sk
2	Lead	ACem S100.3.1C	STATIC FREE	Other	0.01	lb/sk
2	Lead	ACem S100.3.1C	XCem-1101	Thixotropic	2.00	lb/sk
3	Tail	ACem S100.3.1C	ASTM TYPE III	Cement	100.00	%
3	Tail	ACem S100.3.1C	A-7P	Accelerator	2.00	lb/sk
3	Tail	ACem S100.3.1C	FP-24	Defoamer	0.30	%BWOB
3	Tail	ACem S100.3.1C	IntegraSeal POLI	LostCirculation	0.13	lb/sk
3	Tail	ACem S100.3.1C	STATIC FREE	Other	0.01	lb/sk
3	Tail	ACem S100.3.1C	XCem-1101	Thixotropic	1.00	lb/sk

Job Logs

Line	Event	Date (MM/DD/YY)	Time (HH:MM)	Density (lb/gal)	Pump Rate (bpm)	Pump Volume (bbls)	Pipe Pressure (psi)	Comment
1	Call Out	3/16/2022	19:30					ACC gets called out , Requested time on location was 0130 hrs
2	Depart Facility	3/16/2022	22:00					ACC departs facility
3	Arrive To Location	3/16/2022	23:30					ACC arrives to location , Rig is currently riging up casing crew
4	Rig Up	3/17/2022	00:01					ACC spots in units and rigs up pump and iron
5	Waiting	3/17/2022	01:30					ACC waiting on rig to finish running casing and circ well
6	Safety Meeting	3/17/2022	03:30					ACC had a pre job safety meeting with rig hands and OSR , went over job peocedure
7	Pressure Test	3/17/2022	03:50				3000	Pressure test pumps and lines to 3000 psi
8	Pump FW Flush	3/17/2022	03:55	8.33	6	20	200	Pumped 20 bbls fresh water w/ dye tracer at 6 bpm w/ 200 psi
9	Pump Lead Cement	3/17/2022	04:00	12	6	106.01	400	Pumped 106.01 bbls LEAD CMT (247 sks 12 ppg 2.41 yld 14.10 g/sk) at 6 bpm w/ 400 psi
10	Pump Tail Cement	3/17/2022	04:22	12.5	6	53.73	405	Pumped 53.73 BBLS TAIL CMT (143 sks 12.5 ppg 2.11 yld 11.90 g/sk) at 6 bpm w/ 405 psi
11	Shut Down	3/17/2022	04:37					Shut Down Pumping Cement
12	Drop Top Plug	3/17/2022	04:39					Drop Top Plug W/OSR
13	Pump Disp.	3/17/2022	04:41	7.5	6		150	Start Pumping DA-22 Disp. At 6 bpm w/ 150 psi
14	Dye To Surface	3/17/2022	04:52	7.5	6	50	552	At 50 bbls away into DA disp got blue dye tracer to surface at 6 bpm w/ 552 psi
15	Cement To Surface	3/17/2022	04:55	7.5	6	70	605	At 70 bbls away into DA disp got cement back to surface at 6 bpm w/ 605 psi
16	Slow Down	3/17/2022	05:00	7.5	3	100	492	At 100 bbls away into DA disp slow down rate to 3 bpm w/ 492 psi
17	Land Plug	3/17/2022	05:04	7.5	3	116	600	Landed plug at 116 bbls away FC presuure was 600 psi , Bumped plug to 1580 psi
18	Check Floats	3/17/2022	05:09					Check floats got 1 BBL back
19	Rig Down	3/17/2022	05:30					ACC starts riging down equipment and iron
20	Depart Location	3/17/2022	07:00					ACC departs Location
21	Other	3/17/2022	07:01			46		Total Cement To Surface - 46 BBLS

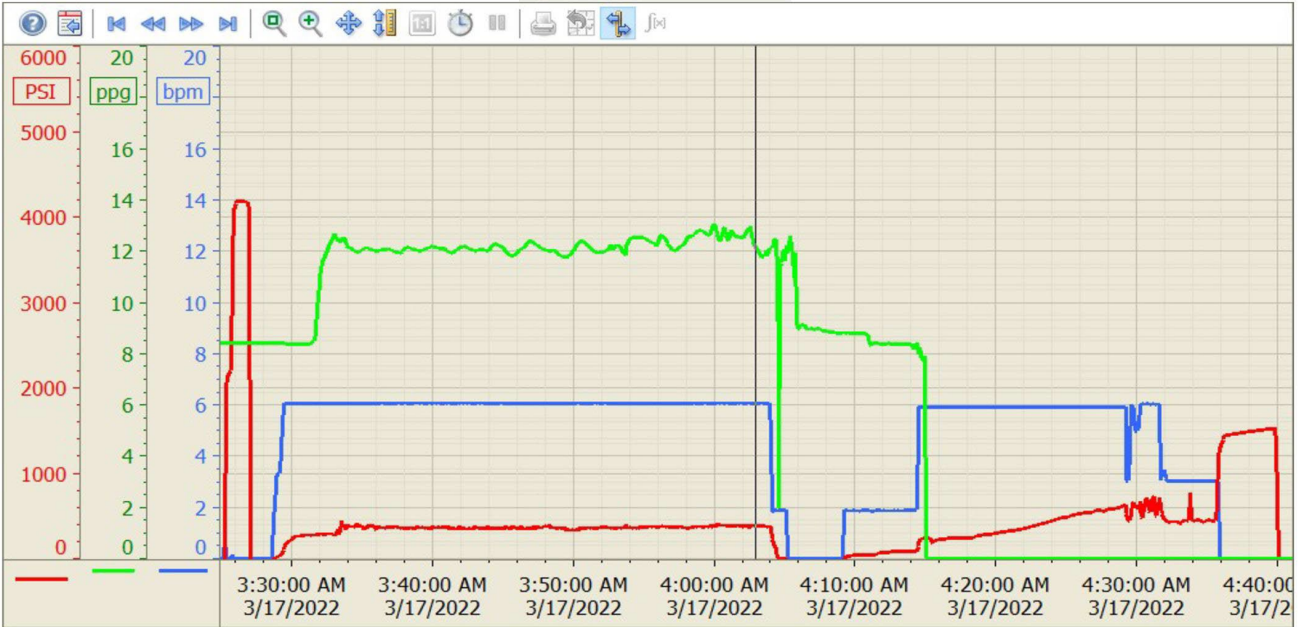
Pump Diagrams

Summary Trend

Bayswater 12



Lease: Topaz West



3/17/2022 5:38:00 AM