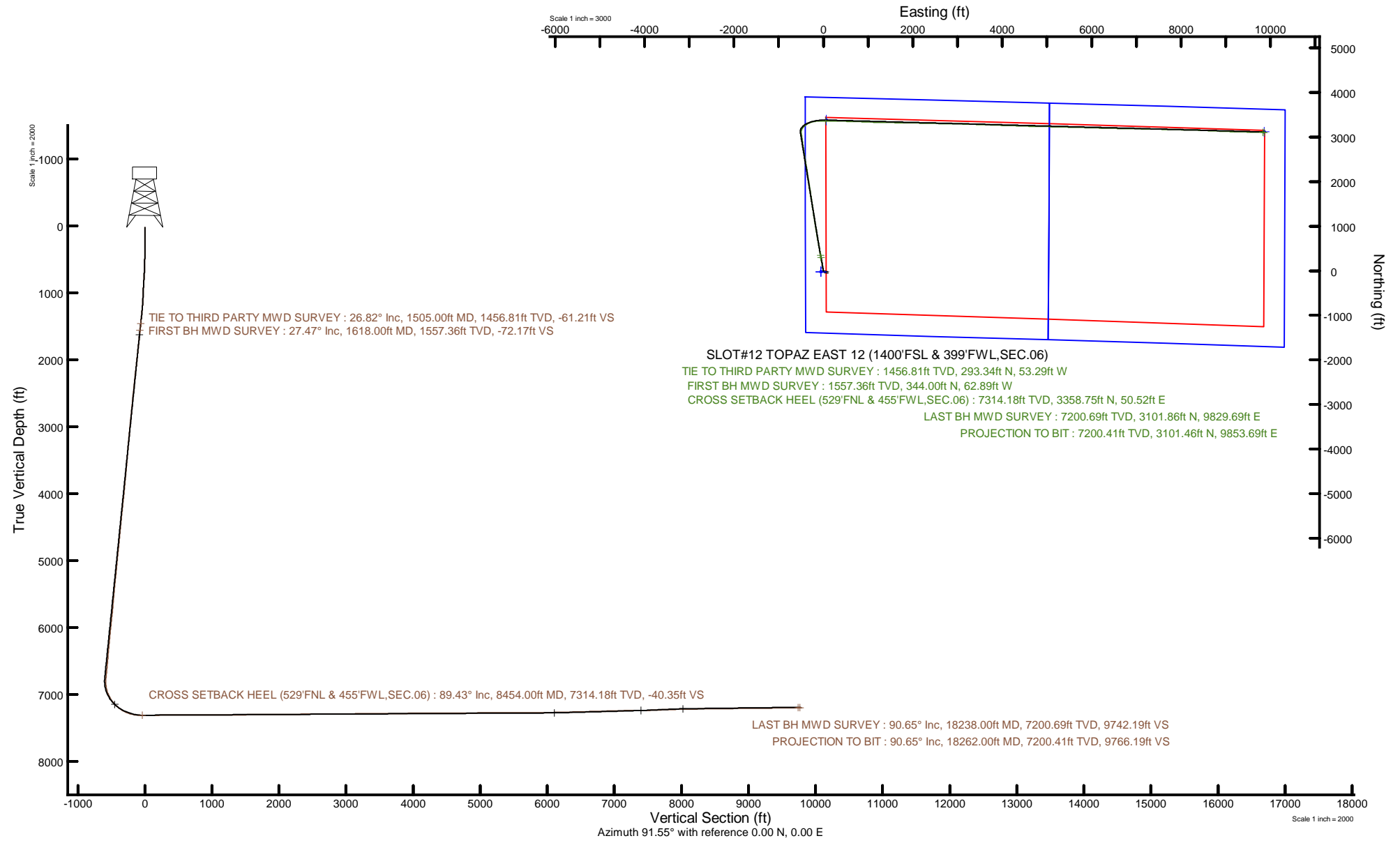


BAYSWATER E&P, LLC



Location: COLORADO Slot: SLOT#12 TOPAZ EAST 12 (1400'FSL & 399'FWL,SEC.06)
 Field: WELD COUNTY (NAD83/TRUE NORTH) Well: TOPAZ EAST 12
 Facility: SEC.06-T07N-R65W Wellbore: TOPAZ EAST 12 PWB

Plot reference wellpath is TOPAZ EAST 12 PWP Rev.A.0	Grid System: NAD83 / Lambert Colorado SP, Northern Zone (501), US feet
True vertical depths are referenced to Ensign 153 (23) (KB)	North Reference: True north
Reference wellpath measured depths are referenced to Ensign 153 (23) (KB)	Scale: True distance
Ensign 153 (23) (KB) to Mean Sea Level: 4968 feet	Coordinates are in feet referenced to Slot
Mean Sea Level to Ground level (At Slot: SLOT#12 TOPAZ EAST 12 (1400'FSL & 399'FWL,SEC.06)): -4945 feet	Depths are in feet
Offset wellpath MDs are referenced to each path's default MD datum	Created by: painsetr on 2022-05-24; Database: WellArchitectDB



REFERENCE WELLPATH IDENTIFICATION			
Operator	BAYSWATER E&P, LLC	Well	TOPAZ EAST 12
Field	WELD COUNTY (NAD83/TRUE NORTH)	API	0512351537
Facility	SEC.06-T07N-R65W	Wellbore	TOPAZ EAST 12 AWB
Slot	SLOT#12 TOPAZ EAST 12 (1400'FSL & 399'FWL,SEC.06)		

REPORT SETUP INFORMATION			
Projection System	NAD83 / Lambert Colorado SP, Northern Zone (501), US feet	Software System	WellArchitect® 6.0
North Reference	True	User	Painsetr
Scale	0.999976	Report Generated	5/24/2022 at 2:41:34 PM
Convergence at slot	0.51° East	Database	WellArchitectDB

WELLPATH LOCATION						
	Local coordinates		Grid coordinates		Geographic coordinates	
	North[ft]	East[ft]	Easting[US ft]	Northing[US ft]	Latitude	Longitude
Slot Location	21.50	53.59	3218142.24	1462786.72	40.6010950°	-104.7144130°
Facility Reference Pt			3218088.84	1462764.76	40.6010360°	-104.7146060°
Field Reference Pt			3174587.00	1430859.71	40.5144139°	-104.8720750°

WELLPATH DATUM			
Calculation method	Minimum curvature	Ensign 153 (23') (KB) to Facility Vertical Datum	4968.00ft
Horizontal Reference Pt	Slot	Ensign 153 (23') (KB) to Mean Sea Level	4968.00ft
Vertical Reference Pt	Ensign 153 (23') (KB)	Ensign 153 (23') (KB) to Ground Level at Slot (SLOT#12 TOPAZ EAST 12 (1400'FSL & 399'FWL,SEC.06))	23.00ft
MD Reference Pt	Ensign 153 (23') (KB)	Section Origin	N 0.00, E 0.00 ft
Field Vertical Reference	Mean Sea Level	Section Azimuth	91.55°

REFERENCE WELLPATH IDENTIFICATION			
Operator	BAYSWATER E&P, LLC	Well	TOPAZ EAST 12
Field	WELD COUNTY (NAD83/TRUE NORTH)	API	0512351537
Facility	SEC.06-T07N-R65W	Wellbore	TOPAZ EAST 12 AWB
Slot	SLOT#12 TOPAZ EAST 12 (1400'FSL & 399'FWL,SEC.06)		

WELLPATH DATA (208 stations) † = interpolated, ‡ = extrapolated station												
MD [ft]	Inclination [°]	Azimuth [°]	TVD [ft]	Vert Sect [ft]	North [ft]	East [ft]	Grid East [US ft]	Grid North [US ft]	Latitude	Longitude	DLS ["/100ft]	Comments
0.00†	0.000	130.180	0.00	0.00	0.00	0.00	3218142.24	1462786.72	40.6010950	-104.7144130	0.00	
23.00	0.000	130.180	23.00	0.00	0.00	0.00	3218142.24	1462786.72	40.6010950	-104.7144130	0.00	
78.00	0.310	130.180	78.00	0.12	-0.10	0.11	3218142.35	1462786.63	40.6010947	-104.7144126	0.56	
170.00	0.280	354.700	170.00	0.28	-0.03	0.28	3218142.52	1462786.69	40.6010949	-104.7144120	0.59	
262.00	0.870	336.980	261.99	-0.03	0.83	-0.01	3218142.22	1462787.56	40.6010973	-104.7144130	0.66	
352.00	1.820	357.370	351.97	-0.42	2.89	-0.34	3218141.87	1462789.61	40.6011029	-104.7144142	1.17	
442.00	2.850	349.290	441.89	-1.00	6.52	-0.83	3218141.35	1462793.23	40.6011129	-104.7144160	1.20	
531.00	5.150	353.220	530.67	-2.05	12.66	-1.71	3218140.42	1462799.37	40.6011297	-104.7144192	2.60	
620.00	8.510	346.570	619.03	-4.33	23.03	-3.71	3218138.32	1462809.72	40.6011582	-104.7144264	3.87	
709.00	13.180	347.070	706.41	-8.57	39.34	-7.51	3218134.38	1462825.99	40.6012030	-104.7144400	5.25	
799.00	14.230	348.490	793.85	-13.64	60.18	-12.01	3218129.69	1462846.79	40.6012602	-104.7144563	1.23	
890.00	14.590	348.350	881.99	-18.78	82.36	-16.56	3218124.95	1462868.93	40.6013211	-104.7144726	0.40	
979.00	15.900	352.430	967.86	-23.28	105.43	-20.43	3218120.87	1462891.96	40.6013844	-104.7144866	1.90	
1069.00	17.250	352.520	1054.11	-27.32	130.88	-23.79	3218117.29	1462917.38	40.6014542	-104.7144987	1.50	
1159.00	18.390	352.500	1139.80	-31.65	158.19	-27.38	3218113.45	1462944.66	40.6015292	-104.7145116	1.27	
1248.00	21.000	348.780	1223.58	-37.39	187.75	-32.32	3218108.26	1462974.18	40.6016103	-104.7145294	3.25	
1337.00	24.150	348.180	1305.76	-45.12	221.23	-39.15	3218101.13	1463007.59	40.6017022	-104.7145540	3.55	
1427.00	26.500	349.320	1387.10	-53.63	258.98	-46.65	3218093.30	1463045.28	40.6018059	-104.7145810	2.67	
1505.00	26.820	348.790	1456.81	-61.21	293.34	-53.29	3218086.35	1463079.58	40.6019002	-104.7146049	0.51	TIE TO THIRD PARTY MWD SURVEY
1618.00	27.470	349.750	1557.36	-72.17	344.00	-62.89	3218076.31	1463130.14	40.6020392	-104.7146395	0.69	FIRST BH MWD SURVEY
1708.00	27.330	349.770	1637.26	-80.63	384.76	-70.25	3218068.58	1463170.83	40.6021511	-104.7146660	0.16	
1797.00	28.200	350.680	1716.02	-88.77	425.61	-77.28	3218061.19	1463211.62	40.6022632	-104.7146913	1.09	
1887.00	28.110	350.640	1795.37	-96.79	467.52	-84.18	3218053.93	1463253.46	40.6023782	-104.7147161	0.10	
1976.00	28.410	350.310	1873.76	-104.89	509.07	-91.15	3218046.58	1463294.96	40.6024923	-104.7147412	0.38	
2065.00	28.140	350.190	1952.14	-113.15	550.63	-98.29	3218039.08	1463336.44	40.6026064	-104.7147670	0.31	
2155.00	28.120	350.710	2031.51	-121.32	592.47	-105.33	3218031.67	1463378.22	40.6027212	-104.7147923	0.27	
2244.00	28.060	348.930	2110.03	-129.83	633.71	-112.73	3218023.90	1463419.40	40.6028344	-104.7148190	0.94	
2333.00	28.000	349.220	2188.59	-138.87	674.78	-120.66	3218015.61	1463460.39	40.6029471	-104.7148475	0.17	
2423.00	28.130	350.740	2268.01	-147.36	716.47	-128.03	3218007.87	1463502.01	40.6030616	-104.7148740	0.81	
2512.00	28.060	350.010	2346.52	-155.48	757.79	-135.03	3218000.50	1463543.27	40.6031750	-104.7148993	0.39	

REFERENCE WELLPATH IDENTIFICATION			
Operator	BAYSWATER E&P, LLC	Well	TOPAZ EAST 12
Field	WELD COUNTY (NAD83/TRUE NORTH)	API	0512351537
Facility	SEC.06-T07N-R65W	Wellbore	TOPAZ EAST 12 AWB
Slot	SLOT#12 TOPAZ EAST 12 (1400'FSL & 399'FWL,SEC.06)		

WELLPATH DATA (208 stations)												
MD [ft]	Inclination [°]	Azimuth [°]	TVD [ft]	Vert Sect [ft]	North [ft]	East [ft]	Grid East [US ft]	Grid North [US ft]	Latitude	Longitude	DLS ["/100ft]	Comments
2602.00	27.390	349.870	2426.19	-163.91	799.02	-142.35	3217992.82	1463584.43	40.6032882	-104.7149256	0.75	
2691.00	28.590	350.420	2504.78	-172.16	840.17	-149.49	3217985.31	1463625.52	40.6034011	-104.7149514	1.38	
2781.00	27.970	351.850	2584.03	-179.88	882.30	-156.07	3217978.36	1463667.58	40.6035167	-104.7149750	1.02	
2870.00	27.770	350.370	2662.71	-187.41	923.40	-162.49	3217971.57	1463708.63	40.6036296	-104.7149982	0.81	
2959.00	27.510	350.100	2741.55	-195.51	964.09	-169.50	3217964.21	1463749.25	40.6037412	-104.7150234	0.32	
3049.00	28.450	350.980	2821.03	-203.57	1005.74	-176.43	3217956.91	1463790.84	40.6038556	-104.7150484	1.14	
3138.00	28.280	351.180	2899.35	-211.26	1047.51	-182.99	3217949.98	1463832.55	40.6039702	-104.7150720	0.22	
3228.00	28.420	351.180	2978.55	-218.95	1089.75	-189.54	3217943.05	1463874.72	40.6040861	-104.7150956	0.16	
3317.00	28.470	351.420	3056.81	-226.49	1131.65	-195.95	3217936.27	1463916.56	40.6042012	-104.7151187	0.14	
3406.00	28.680	351.020	3134.97	-234.13	1173.72	-202.45	3217929.40	1463958.57	40.6043166	-104.7151421	0.32	
3496.00	27.530	351.380	3214.36	-241.75	1215.62	-208.94	3217922.54	1464000.41	40.6044316	-104.7151655	1.29	
3585.00	26.320	350.590	3293.71	-249.13	1255.42	-215.25	3217915.88	1464040.15	40.6045409	-104.7151882	1.42	
3675.00	24.980	350.830	3374.84	-256.46	1293.87	-221.54	3217909.25	1464078.54	40.6046464	-104.7152108	1.49	
3764.00	26.420	351.550	3455.03	-263.39	1332.01	-227.44	3217903.01	1464116.63	40.6047511	-104.7152321	1.66	
3854.00	25.980	350.910	3535.78	-270.51	1371.28	-233.50	3217896.60	1464155.84	40.6048589	-104.7152539	0.58	
3943.00	26.070	351.660	3615.76	-277.47	1409.88	-239.42	3217890.35	1464194.39	40.6049648	-104.7152752	0.38	
4032.00	28.330	351.460	3694.91	-284.53	1450.11	-245.39	3217884.02	1464234.57	40.6050753	-104.7152967	2.54	
4121.00	28.920	351.980	3773.03	-291.80	1492.31	-251.53	3217877.50	1464276.70	40.6051911	-104.7153188	0.72	
4210.00	29.010	352.070	3850.90	-298.94	1534.99	-257.51	3217871.15	1464319.33	40.6053082	-104.7153404	0.11	
4299.00	29.130	351.530	3928.69	-306.26	1577.79	-263.68	3217864.60	1464362.07	40.6054257	-104.7153626	0.32	
4388.00	29.450	350.750	4006.31	-314.13	1620.81	-270.38	3217857.51	1464405.03	40.6055438	-104.7153868	0.56	
4477.00	29.270	351.240	4083.88	-322.12	1663.91	-277.22	3217850.30	1464448.07	40.6056621	-104.7154114	0.34	
4567.00	29.120	350.700	4162.45	-330.18	1707.27	-284.11	3217843.03	1464491.36	40.6057811	-104.7154362	0.34	
4656.00	29.350	350.880	4240.11	-338.30	1750.17	-291.06	3217835.69	1464534.20	40.6058989	-104.7154612	0.28	
4746.00	29.240	350.650	4318.60	-346.54	1793.64	-298.13	3217828.24	1464577.60	40.6060182	-104.7154867	0.17	
4835.00	29.100	351.670	4396.31	-354.36	1836.50	-304.80	3217821.19	1464620.40	40.6061358	-104.7155107	0.58	
4925.00	28.840	351.900	4475.05	-361.75	1879.65	-311.02	3217814.58	1464663.49	40.6062542	-104.7155331	0.31	
5015.00	28.800	350.890	4553.91	-369.40	1922.54	-317.52	3217807.71	1464706.32	40.6063720	-104.7155565	0.54	
5105.00	29.040	351.500	4632.68	-377.23	1965.55	-324.18	3217800.67	1464749.27	40.6064900	-104.7155805	0.42	
5194.00	28.900	351.200	4710.55	-384.86	2008.17	-330.66	3217793.81	1464791.83	40.6066070	-104.7156038	0.23	

REFERENCE WELLPATH IDENTIFICATION			
Operator	BAYSWATER E&P, LLC	Well	TOPAZ EAST 12
Field	WELD COUNTY (NAD83/TRUE NORTH)	API	0512351537
Facility	SEC.06-T07N-R65W	Wellbore	TOPAZ EAST 12 AWB
Slot	SLOT#12 TOPAZ EAST 12 (1400'FSL & 399'FWL,SEC.06)		

WELLPATH DATA (208 stations)												
MD [ft]	Inclination [°]	Azimuth [°]	TVD [ft]	Vert Sect [ft]	North [ft]	East [ft]	Grid East [US ft]	Grid North [US ft]	Latitude	Longitude	DLS ["/100ft]	Comments
5283.00	29.140	351.270	4788.37	-392.59	2050.84	-337.24	3217786.85	1464834.44	40.6067241	-104.7156275	0.27	
5372.00	28.780	350.760	4866.24	-400.47	2093.40	-343.97	3217779.75	1464876.94	40.6068410	-104.7156518	0.49	
5462.00	29.330	351.450	4944.92	-408.39	2136.59	-350.72	3217772.61	1464920.06	40.6069595	-104.7156761	0.72	
5551.00	28.990	352.110	5022.64	-415.75	2179.50	-356.93	3217766.03	1464962.92	40.6070773	-104.7156984	0.53	
5641.00	29.340	351.290	5101.23	-423.25	2222.90	-363.26	3217759.31	1465006.26	40.6071964	-104.7157213	0.59	
5731.00	27.860	350.280	5180.24	-431.29	2265.43	-370.15	3217752.04	1465048.72	40.6073131	-104.7157461	1.73	
5820.00	28.150	349.930	5258.82	-439.58	2306.60	-377.33	3217744.50	1465089.82	40.6074261	-104.7157719	0.37	
5910.00	27.180	350.530	5338.53	-447.79	2347.78	-384.42	3217737.04	1465130.94	40.6075392	-104.7157975	1.12	
5999.00	25.810	350.280	5418.18	-455.46	2386.92	-391.04	3217730.08	1465170.03	40.6076466	-104.7158213	1.54	
6088.00	24.590	350.220	5498.71	-462.89	2424.27	-397.46	3217723.33	1465207.31	40.6077491	-104.7158444	1.37	
6177.00	25.170	350.770	5579.45	-470.06	2461.20	-403.64	3217716.82	1465244.19	40.6078505	-104.7158667	0.70	
6267.00	27.420	352.820	5660.14	-476.79	2500.66	-409.30	3217710.81	1465283.59	40.6079588	-104.7158871	2.70	
6357.00	28.570	352.220	5739.60	-483.42	2542.54	-414.80	3217704.94	1465325.42	40.6080738	-104.7159069	1.32	
6446.00	28.370	350.350	5817.84	-490.98	2584.47	-421.23	3217698.14	1465367.29	40.6081889	-104.7159301	1.03	
6536.00	28.660	350.350	5896.92	-499.33	2626.83	-428.43	3217690.56	1465409.59	40.6083051	-104.7159560	0.32	
6626.00	28.530	350.550	5975.95	-507.62	2669.31	-435.58	3217683.04	1465452.00	40.6084217	-104.7159817	0.18	
6714.00	28.410	350.760	6053.30	-515.55	2710.70	-442.39	3217675.86	1465493.33	40.6085353	-104.7160063	0.18	
6803.00	28.390	350.510	6131.59	-523.56	2752.47	-449.28	3217668.61	1465535.03	40.6086500	-104.7160311	0.14	
6893.00	28.190	351.260	6210.84	-531.46	2794.58	-456.03	3217661.48	1465577.08	40.6087656	-104.7160554	0.45	
6981.00	28.380	351.950	6288.34	-538.66	2835.83	-462.12	3217655.02	1465618.28	40.6088788	-104.7160773	0.43	
7071.00	28.390	352.780	6367.52	-545.49	2878.24	-467.81	3217648.96	1465660.63	40.6089952	-104.7160978	0.44	
7160.00	28.050	353.420	6445.94	-551.67	2920.02	-472.86	3217643.54	1465702.36	40.6091099	-104.7161160	0.51	
7250.00	28.190	351.900	6525.32	-558.23	2962.09	-478.28	3217637.74	1465744.38	40.6092253	-104.7161356	0.81	
7339.00	28.230	350.260	6603.74	-565.88	3003.64	-484.81	3217630.85	1465785.88	40.6093394	-104.7161591	0.87	
7429.00	27.260	350.400	6683.40	-574.03	3044.95	-491.85	3217623.45	1465827.11	40.6094528	-104.7161844	1.08	
7519.00	26.310	350.590	6763.74	-581.81	3084.95	-498.54	3217616.40	1465867.05	40.6095625	-104.7162085	1.06	
7608.00	28.010	7.560	6843.04	-583.37	3125.19	-499.02	3217615.56	1465907.28	40.6096730	-104.7162103	8.88	
7698.00	31.550	24.650	6921.29	-571.90	3167.63	-486.39	3217627.82	1465949.83	40.6097895	-104.7161648	10.18	
7787.00	34.600	39.320	6995.98	-547.24	3208.41	-460.62	3217653.22	1465990.84	40.6099014	-104.7160720	9.60	
7876.00	38.550	49.110	7067.50	-511.25	3246.16	-423.60	3217689.91	1466028.92	40.6100051	-104.7159386	7.90	

REFERENCE WELLPATH IDENTIFICATION				
Operator	BAYSWATER E&P, LLC		Well	TOPAZ EAST 12
Field	WELD COUNTY (NAD83/TRUE NORTH)		API	0512351537
Facility	SEC.06-T07N-R65W		Wellbore	TOPAZ EAST 12 AWB
Slot	SLOT#12 TOPAZ EAST 12 (1400'FSL & 399'FWL,SEC.06)			

WELLPATH DATA (208 stations) † = interpolated, ‡ = extrapolated station												
MD [ft]	Inclination [°]	Azimuth [°]	TVD [ft]	Vert Sect [ft]	North [ft]	East [ft]	Grid East [US ft]	Grid North [US ft]	Latitude	Longitude	DLS †/100ft	Comments
7966.00	46.050	56.130	7134.05	-464.06	3282.65	-375.40	8217737.78	1466065.83	40.6101052	-104.7157650	9.84	
8055.00	54.250	65.240	7191.11	-405.40	3315.73	-315.83	8217797.05	1466099.43	40.6101960	-104.7155505	12.09	
8144.00	60.200	77.260	7239.39	-335.36	3339.45	-245.12	8217867.54	1466123.78	40.6102611	-104.7152958	13.16	
8234.00	69.260	84.830	7277.81	-255.47	3351.89	-164.86	8217947.69	1466136.94	40.6102953	-104.7150068	12.61	
8324.00	78.100	88.560	7303.09	-169.50	3356.81	-78.73	8218033.77	1466142.61	40.6103088	-104.7146966	10.60	
8413.00	88.520	89.350	7313.44	-81.32	3358.41	9.53	8218122.01	1466145.00	40.6103132	-104.7143787	11.74	
8454.00†	89.428	89.686	7314.18	-40.35	3358.75	50.52	8218163.00	1466145.70	40.6103141	-104.7142311	2.36	CROSS SETBACK HEEL (529'FNL & 455'FWL,SEC.06)
8502.00	90.490	90.080	7314.21	7.63	3358.85	98.52	8218210.99	1466146.23	40.6103144	-104.7140582	2.36	
8592.00	90.650	89.950	7313.32	97.59	3358.83	188.51	8218300.98	1466147.00	40.6103143	-104.7137341	0.23	
8682.00	90.650	90.840	7312.29	187.56	3358.21	278.50	8218390.97	1466147.18	40.6103126	-104.7134099	0.99	
8772.00	90.590	91.630	7311.32	277.56	3356.27	368.48	8218480.96	1466146.03	40.6103073	-104.7130859	0.88	
8861.00	90.490	92.240	7310.48	366.55	3353.26	457.42	8218569.92	1466143.82	40.6102990	-104.7127655	0.69	
8951.00	90.250	91.390	7309.90	456.55	3350.41	547.37	8218659.89	1466141.76	40.6102912	-104.7124416	0.98	
9040.00	90.430	91.840	7309.37	545.54	3347.90	636.34	8218748.87	1466140.04	40.6102843	-104.7121212	0.54	
9129.00	90.180	91.360	7308.90	634.54	3345.42	725.30	8218837.85	1466138.35	40.6102775	-104.7118008	0.61	
9219.00	90.490	92.100	7308.37	724.54	3342.70	815.26	8218927.83	1466136.43	40.6102700	-104.7114768	0.89	
9308.00	90.460	92.250	7307.63	813.53	3339.32	904.19	8219016.78	1466133.84	40.6102607	-104.7111565	0.17	
9398.00	90.430	92.230	7306.94	903.52	3335.81	994.12	8219106.74	1466131.12	40.6102511	-104.7108326	0.04	
9487.00	90.120	91.990	7306.51	992.52	3332.53	1083.06	8219195.70	1466128.63	40.6102421	-104.7105123	0.44	
9577.00	90.150	90.460	7306.30	1082.51	3330.61	1173.03	8219285.69	1466127.50	40.6102368	-104.7101882	1.70	
9666.00	89.780	91.100	7306.35	1171.50	3329.39	1262.02	8219374.68	1466127.08	40.6102334	-104.7098677	0.83	
9755.00	89.880	91.530	7306.61	1260.50	3327.35	1351.00	8219463.67	1466125.82	40.6102278	-104.7095472	0.50	
9845.00	90.370	91.420	7306.42	1350.50	3325.04	1440.97	8219553.66	1466124.30	40.6102214	-104.7092232	0.56	
9934.00	90.250	91.220	7305.94	1439.50	3322.98	1529.94	8219642.64	1466123.04	40.6102158	-104.7089027	0.26	
10023.00	90.490	91.050	7305.36	1528.50	3321.22	1618.93	8219731.63	1466122.07	40.6102109	-104.7085823	0.33	
10112.00	90.590	90.600	7304.52	1617.48	3319.94	1707.91	8219820.63	1466121.58	40.6102074	-104.7082618	0.52	
10202.00	90.620	91.490	7303.57	1707.48	3318.30	1797.89	8219910.61	1466120.73	40.6102029	-104.7079377	0.99	
10291.00	90.220	90.970	7302.92	1796.47	3316.39	1886.87	8219999.60	1466119.61	40.6101976	-104.7076173	0.74	
10380.00	90.400	90.940	7302.44	1885.46	3314.91	1975.85	8220088.59	1466118.91	40.6101935	-104.7072968	0.21	
10469.00	90.490	91.150	7301.75	1974.46	3313.28	2064.84	8220177.59	1466118.08	40.6101891	-104.7069763	0.26	

REFERENCE WELLPATH IDENTIFICATION			
Operator	BAYSWATER E&P, LLC	Well	TOPAZ EAST 12
Field	WELD COUNTY (NAD83/TRUE NORTH)	API	0512351537
Facility	SEC.06-T07N-R65W	Wellbore	TOPAZ EAST 12 AWB
Slot	SLOT#12 TOPAZ EAST 12 (1400'FSL & 399'FWL,SEC.06)		

WELLPATH DATA (208 stations)												
MD [ft]	Inclination [°]	Azimuth [°]	TVD [ft]	Vert Sect [ft]	North [ft]	East [ft]	Grid East [US ft]	Grid North [US ft]	Latitude	Longitude	DLS [°/100ft]	Comments
10559.00	90.340	91.190	7301.10	2064.45	3311.44	2154.82	3220267.57	1466117.04	40.6101840	-104.7066522	0.17	
10648.00	90.520	91.390	7300.43	2153.45	3309.44	2243.79	3220356.56	1466115.82	40.6101785	-104.7063318	0.30	
10737.00	90.710	91.600	7299.47	2242.45	3307.12	2332.75	3220445.54	1466114.29	40.6101721	-104.7060113	0.32	
10826.00	90.460	90.970	7298.56	2331.44	3305.12	2421.73	3220534.53	1466113.08	40.6101666	-104.7056909	0.76	
10916.00	90.620	91.330	7297.72	2421.43	3303.32	2511.70	3220624.51	1466112.07	40.6101616	-104.7053668	0.44	
11006.00	90.620	91.500	7296.74	2511.43	3301.10	2601.67	3220714.49	1466110.65	40.6101555	-104.7050428	0.19	
11095.00	90.460	91.380	7295.90	2600.42	3298.86	2690.64	3220803.48	1466109.20	40.6101493	-104.7047224	0.22	
11184.00	90.250	90.980	7295.35	2689.42	3297.03	2779.62	3220892.47	1466108.16	40.6101442	-104.7044019	0.51	
11274.00	90.220	90.430	7294.98	2779.41	3295.92	2869.61	3220982.46	1466107.85	40.6101412	-104.7040778	0.61	
11363.00	90.550	91.140	7294.38	2868.40	3294.70	2958.60	3221071.46	1466107.42	40.6101378	-104.7037573	0.88	
11453.00	90.460	91.140	7293.59	2958.39	3292.91	3048.58	3221161.44	1466106.42	40.6101329	-104.7034332	0.10	
11542.00	90.400	90.790	7292.92	3047.39	3291.41	3137.56	3221250.44	1466105.71	40.6101287	-104.7031128	0.40	
11631.00	90.800	92.520	7291.99	3136.38	3288.84	3226.52	3221339.41	1466103.93	40.6101216	-104.7027924	1.99	
11721.00	90.430	92.110	7291.03	3226.36	3285.20	3316.44	3221429.35	1466101.09	40.6101116	-104.7024685	0.61	
11811.00	90.580	92.150	7290.23	3316.35	3281.86	3406.37	3221519.31	1466098.54	40.6101024	-104.7021446	0.17	
11900.00	90.340	90.720	7289.52	3405.35	3279.63	3495.34	3221608.29	1466097.10	40.6100962	-104.7018242	1.63	
11989.00	90.680	92.080	7288.73	3494.34	3277.46	3584.31	3221697.27	1466095.72	40.6100902	-104.7015038	1.58	
12078.00	90.460	92.270	7287.84	3583.33	3274.08	3673.24	3221786.23	1466093.13	40.6100809	-104.7011835	0.33	
12168.00	90.310	92.310	7287.23	3673.32	3270.48	3763.17	3221876.18	1466090.33	40.6100710	-104.7008596	0.17	
12257.00	90.520	92.540	7286.59	3762.31	3266.72	3852.08	3221965.13	1466087.35	40.6100607	-104.7005394	0.35	
12347.00	90.490	92.200	7285.80	3852.30	3263.00	3942.00	3222055.07	1466084.43	40.6100504	-104.7002155	0.38	
12436.00	90.280	92.380	7285.20	3941.29	3259.44	4030.93	3222144.03	1466081.66	40.6100406	-104.6998952	0.31	
12525.00	90.120	91.210	7284.89	4030.29	3256.65	4119.88	3222233.00	1466079.66	40.6100329	-104.6995749	1.33	
12615.00	90.250	91.080	7284.60	4120.28	3254.85	4209.86	3222322.99	1466078.66	40.6100279	-104.6992508	0.20	
12705.00	90.520	92.150	7283.99	4210.28	3252.32	4299.83	3222412.97	1466076.92	40.6100209	-104.6989268	1.23	
12793.00	90.430	92.440	7283.26	4298.27	3248.79	4387.75	3222500.92	1466074.17	40.6100112	-104.6986101	0.35	
12883.00	90.490	92.140	7282.54	4388.26	3245.20	4477.68	3222590.87	1466071.37	40.6100013	-104.6982862	0.34	
12972.00	90.400	91.870	7281.85	4477.25	3242.08	4566.62	3222679.84	1466069.05	40.6099927	-104.6979659	0.32	
13062.00	90.310	91.940	7281.29	4567.25	3239.09	4656.57	3222769.80	1466066.85	40.6099845	-104.6976419	0.13	
13151.00	90.250	91.670	7280.86	4656.25	3236.29	4745.52	3222858.78	1466064.84	40.6099767	-104.6973216	0.31	



Actual Wellpath Report

TOPAZ EAST 12 AWP

Page 7 of 10



REFERENCE WELLPATH IDENTIFICATION			
Operator	BAYSWATER E&P, LLC	Well	TOPAZ EAST 12
Field	WELD COUNTY (NAD83/TRUE NORTH)	API	0512351537
Facility	SEC.06-T07N-R65W	Wellbore	TOPAZ EAST 12 AWB
Slot	SLOT#12 TOPAZ EAST 12 (1400'FSL & 399'FWL,SEC.06)		

WELLPATH DATA (208 stations)												
MD [ft]	Inclination [°]	Azimuth [°]	TVD [ft]	Vert Sect [ft]	North [ft]	East [ft]	Grid East [US ft]	Grid North [US ft]	Latitude	Longitude	DLS [°/100ft]	Comments
13241.00	90.180	89.960	7280.52	4746.24	3235.01	4835.51	3222948.77	1466064.36	40.6099731	-104.6969975	1.90	
13331.00	90.580	90.300	7279.92	4836.21	3234.80	4925.51	3223038.76	1466064.95	40.6099725	-104.6966733	0.58	
13420.00	90.580	91.760	7279.02	4925.20	3233.20	5014.49	3223127.75	1466064.14	40.6099681	-104.6963529	1.64	
13509.00	90.280	91.180	7278.35	5014.19	3230.92	5103.45	3223216.73	1466062.64	40.6099618	-104.6960324	0.73	
13599.00	90.340	90.960	7277.87	5104.19	3229.24	5193.44	3223306.73	1466061.76	40.6099571	-104.6957084	0.25	
13688.00	90.460	91.960	7277.25	5193.18	3226.97	5282.40	3223395.71	1466060.28	40.6099508	-104.6953879	1.13	
13778.00	90.220	91.430	7276.71	5283.18	3224.31	5372.36	3223485.68	1466058.42	40.6099435	-104.6950640	0.65	
13866.00	90.310	91.700	7276.30	5371.18	3221.91	5460.33	3223573.67	1466056.79	40.6099368	-104.6947471	0.32	
13956.00	90.310	91.690	7275.82	5461.18	3219.25	5550.29	3223663.64	1466054.93	40.6099295	-104.6944231	0.01	
14046.00	90.120	91.470	7275.48	5551.18	3216.76	5640.25	3223753.62	1466053.24	40.6099226	-104.6940991	0.32	
14136.00	90.220	91.330	7275.21	5641.18	3214.57	5730.23	3223843.61	1466051.84	40.6099165	-104.6937751	0.19	
14225.00	90.280	91.680	7274.82	5730.18	3212.23	5819.19	3223932.59	1466050.29	40.6099100	-104.6934547	0.40	
14314.00	90.310	91.680	7274.37	5819.18	3209.62	5908.16	3224021.57	1466048.47	40.6099028	-104.6931343	0.03	
14404.00	90.430	91.880	7273.78	5909.17	3206.82	5998.11	3224111.54	1466046.47	40.6098951	-104.6928103	0.26	
14493.00	90.150	91.800	7273.33	5998.17	3203.97	6087.06	3224200.52	1466044.40	40.6098872	-104.6924899	0.33	
14582.00	91.320	91.320	7272.19	6087.16	3201.54	6176.02	3224289.49	1466042.77	40.6098805	-104.6921695	1.42	
14671.00	91.420	91.830	7270.06	6176.14	3199.10	6264.96	3224378.45	1466041.11	40.6098737	-104.6918492	0.58	
14761.00	91.380	91.510	7267.87	6266.11	3196.48	6354.90	3224468.40	1466039.29	40.6098664	-104.6915253	0.36	
14850.00	91.290	91.250	7265.79	6355.08	3194.33	6443.85	3224557.36	1466037.93	40.6098605	-104.6912049	0.31	
14939.00	91.600	91.240	7263.55	6444.05	3192.40	6532.80	3224646.32	1466036.79	40.6098551	-104.6908846	0.35	
15028.00	91.480	90.990	7261.16	6533.02	3190.67	6621.75	3224735.28	1466035.84	40.6098503	-104.6905642	0.31	
15117.00	91.510	90.980	7258.83	6621.98	3189.14	6710.70	3224824.25	1466035.10	40.6098460	-104.6902438	0.04	
15207.00	91.480	91.140	7256.49	6711.95	3187.47	6800.66	3224914.21	1466034.23	40.6098414	-104.6899199	0.18	
15297.00	91.600	91.010	7254.07	6801.92	3185.79	6890.61	3225004.17	1466033.34	40.6098367	-104.6895959	0.20	
15387.00	91.380	91.190	7251.73	6891.88	3184.06	6980.56	3225094.13	1466032.41	40.6098319	-104.6892719	0.32	
15477.00	91.540	91.150	7249.43	6981.85	3182.22	7070.51	3225184.10	1466031.37	40.6098268	-104.6889480	0.18	
15566.00	91.630	91.170	7246.97	7070.81	3180.42	7159.46	3225273.05	1466030.36	40.6098218	-104.6886276	0.10	
15656.00	90.770	91.120	7245.09	7160.79	3178.62	7249.42	3225363.03	1466029.36	40.6098168	-104.6883036	0.96	
15745.00	90.620	91.360	7244.01	7249.78	3176.70	7338.40	3225452.01	1466028.22	40.6098114	-104.6879832	0.32	
15835.00	90.830	91.180	7242.87	7339.78	3174.70	7428.37	3225541.99	1466027.02	40.6098058	-104.6876591	0.31	

REFERENCE WELLPATH IDENTIFICATION			
Operator	BAYSWATER E&P, LLC	Well	TOPAZ EAST 12
Field	WELD COUNTY (NAD83/TRUE NORTH)	API	0512351537
Facility	SEC.06-T07N-R65W	Wellbore	TOPAZ EAST 12 AWB
Slot	SLOT#12 TOPAZ EAST 12 (1400'FSL & 399'FWL,SEC.06)		

WELLPATH DATA (208 stations) † = interpolated, ‡ = extrapolated station												
MD [ft]	Inclination [°]	Azimuth [°]	TVD [ft]	Vert Sect [ft]	North [ft]	East [ft]	Grid East [US ft]	Grid North [US ft]	Latitude	Longitude	DLS ["/100ft]	Comments
15925.00	90.680	91.370	7241.68	7429.77	3172.70	7518.34	3225631.97	1466025.82	40.6098003	-104.6873351	0.27	
16014.00	92.490	91.140	7239.22	7518.73	3170.75	7607.28	3225720.93	1466024.66	40.6097949	-104.6870148	2.05	
16104.00	92.340	91.430	7235.43	7608.65	3168.74	7697.17	3225810.83	1466023.44	40.6097892	-104.6866910	0.36	
16193.00	91.790	91.200	7232.22	7697.59	3166.69	7786.09	3225899.77	1466022.18	40.6097836	-104.6863708	0.67	
16283.00	91.660	91.410	7229.51	7787.55	3164.65	7876.03	3225989.71	1466020.93	40.6097779	-104.6860468	0.27	
16373.00	91.850	91.300	7226.76	7877.50	3162.52	7965.96	3226079.66	1466019.60	40.6097719	-104.6857229	0.24	
16462.00	91.910	91.160	7223.84	7966.45	3160.61	8054.89	3226168.60	1466018.48	40.6097666	-104.6854027	0.17	
16551.00	90.980	91.630	7221.59	8055.42	3158.44	8143.84	3226257.56	1466017.10	40.6097606	-104.6850823	1.17	
16640.00	90.890	91.040	7220.14	8144.41	3156.37	8232.80	3226346.54	1466015.82	40.6097548	-104.6847619	0.67	
16729.00	90.890	92.010	7218.76	8233.40	3154.00	8321.76	3226435.51	1466014.24	40.6097482	-104.6844415	1.09	
16819.00	90.950	92.670	7217.31	8323.38	3150.33	8411.67	3226525.45	1466011.36	40.6097381	-104.6841177	0.74	
16908.00	90.920	92.430	7215.86	8412.35	3146.37	8500.57	3226614.38	1466008.19	40.6097271	-104.6837975	0.27	
16998.00	90.650	92.430	7214.63	8502.33	3142.55	8590.48	3226704.31	1466005.17	40.6097166	-104.6834737	0.30	
17088.00	90.400	92.380	7213.80	8592.32	3138.78	8680.40	3226794.26	1466002.19	40.6097061	-104.6831499	0.28	
17177.00	90.620	92.330	7213.01	8681.31	3135.12	8769.32	3226883.21	1465999.32	40.6096960	-104.6828296	0.25	
17266.00	90.620	92.330	7212.05	8770.29	3131.50	8858.24	3226972.15	1465996.49	40.6096860	-104.6825094	0.00	
17355.00	90.800	92.470	7210.94	8859.28	3127.77	8947.16	3227061.10	1465993.55	40.6096757	-104.6821891	0.26	
17445.00	90.680	92.360	7209.78	8949.26	3123.98	9037.07	3227151.04	1465990.56	40.6096652	-104.6818653	0.18	
17534.00	90.680	92.350	7208.73	9038.24	3120.33	9125.99	3227239.98	1465987.69	40.6096550	-104.6815451	0.01	
17624.00	90.620	91.060	7207.70	9128.24	3117.65	9215.94	3227329.95	1465985.81	40.6096476	-104.6812211	1.43	
17713.00	90.620	91.530	7206.74	9217.23	3115.64	9304.91	3227418.94	1465984.59	40.6096420	-104.6809007	0.53	
17801.00	90.580	91.370	7205.82	9305.23	3113.41	9392.88	3227506.92	1465983.14	40.6096358	-104.6805839	0.19	
17890.00	90.740	91.750	7204.80	9394.22	3110.99	9481.84	3227595.89	1465981.50	40.6096290	-104.6802635	0.46	
17980.00	90.650	91.620	7203.70	9484.21	3108.34	9571.79	3227685.86	1465979.65	40.6096217	-104.6799395	0.18	
18068.00	90.680	91.550	7202.68	9572.21	3105.91	9659.75	3227773.84	1465978.00	40.6096149	-104.6796227	0.09	
18158.00	90.680	91.460	7201.61	9662.20	3103.54	9749.72	3227863.82	1465976.43	40.6096083	-104.6792987	0.10	
18238.00	90.650	90.950	7200.69	9742.19	3101.86	9829.69	3227943.80	1465975.46	40.6096036	-104.6790107	0.64	LAST BH MWD SURVEY
18262.00†	90.650	90.950	7200.41	9766.19	3101.46	9853.69	3227967.80	1465975.27	40.6096025	-104.6789242	0.00	PROJECTION TO BIT

REFERENCE WELLPATH IDENTIFICATION			
Operator	BAYSWATER E&P, LLC	Well	TOPAZ EAST 12
Field	WELD COUNTY (NAD83/TRUE NORTH)	API	0512351537
Facility	SEC.06-T07N-R65W	Wellbore	TOPAZ EAST 12 AWB
Slot	SLOT#12 TOPAZ EAST 12 (1400'FSL & 399'FWL,SEC.06)		

TARGETS								
Name	TVD [ft]	North [ft]	East [ft]	Grid East [US ft]	Grid North [US ft]	Latitude	Longitude	Shape
SEC.05-T07N-R65W	0.00	-21.50	-53.59	3218088.84	1462764.75	40.6010360	-104.7146060	polygon
2D Polygon: dimensions not calculated								
SEC.05/06-T07N-R65W (SB 460')	0.00	-21.50	-53.59	3218088.84	1462764.75	40.6010360	-104.7146060	polygon
2D Polygon: dimensions not calculated								
SEC.06-T07N-R65W	0.00	-21.50	-53.59	3218088.84	1462764.75	40.6010360	-104.7146060	polygon
2D Polygon: dimensions not calculated								
TOPAZ EAST 12 BHL REV-1(510'FNL & 470'FEL,SEC.05)	7193.00	3112.95	9859.58	3227973.59	1465986.81	40.6096340	-104.6789030	point
TOPAZ EAST 12 LP REV-1(510'FNL & 470'FWL,SEC.06)	7313.00	3378.02	66.08	3218178.39	1466165.11	40.6103670	-104.7141750	point

WELLPATH COMPOSITION - Ref Wellbore: TOPAZ EAST 12 AWB Ref Wellpath: TOPAZ EAST 12 AWP					
Start MD [ft]	End MD [ft]	Positional Uncertainty Model	Log Name/Comment	Wellbore	Survey Date
23.00	1505.00	OWSG MWD rev2 - Standard	OWSG MWD rev2 - Standard 13-1/2" <78 - 1505>	TOPAZ EAST 12 AWB	4/20/2022
1505.00	18262.00	OWSG MWD rev2 + IFR1 + Multi-Station Correction	OWSG MWD rev2 + IFR1 + MS 8-1/2" <1618 - 18238>	TOPAZ EAST 12 AWB	5/20/2022

REFERENCE WELLPATH IDENTIFICATION			
Operator	BAYSWATER E&P, LLC	Well	TOPAZ EAST 12
Field	WELD COUNTY (NAD83/TRUE NORTH)	API	0512351537
Facility	SEC.06-T07N-R65W	Wellbore	TOPAZ EAST 12 AWB
Slot	SLOT#12 TOPAZ EAST 12 (1400'FSL & 399'FWL,SEC.06)		

WELLPATH COMMENTS				
MD [ft]	Inclination [°]	Azimuth [°]	TVD [ft]	Comment
1505.00	26.820	348.790	1456.81	TIE TO THIRD PARTY MWD SURVEY
1618.00	27.470	349.750	1557.36	FIRST BH MWD SURVEY
8454.00	89.428	89.686	7314.18	CROSS SETBACK HEEL (529'FNL & 455'FWL,SEC.06)
18238.00	90.650	90.950	7200.69	LAST BH MWD SURVEY
18262.00	90.650	90.950	7200.41	PROJECTION TO BIT