

LANE WELLS

A DIVISION OF DRESSER INDUSTRIES, INC.

Production Technology

FILE NO.		COMPANY BANDER & COUCH	
WELL		WARNECKE "A" # 1	
FIELD		WILDCAT	
COUNTY		LOGAN	
LOCATION		STATE COLORADO	
SEC 30		TWP 9N	RGE 54W
C SE SW		ML	
Permanent Datum		G.L. 4385	
Log Measured from		K.B. 10 ft. Above Permanent Datum	
Drilling Measured from		K.B.	
Date		11-24-65	
Run No.		ONE	
Depth—Driller		5392	
Depth—Logger		5391	
Bottom Logged Interval		5386	
Top Logged Interval		83	
Casing—Driller		8 5/8 81	
Casing—Logger		83	
Bit Size		7 7/8	
Type Fluid in Hole		CHEM.-GEL.	
Density and Viscosity		9.9 66	
pH and Fluid Loss		8.0 4.4	
Source of Sample		CIRCULATED	
Rm @ Meas. Temp		2.1 @ 100 F	
Rmf @ Meas. Temp		1.6 @ 100 F	
Rmc @ Meas. Temp		2.6 @ 100 F	
Source of Rmf and Rmc		MEASURED	
Rm @ BHT		1.6 @ 134 F	
Time Since Cmc		2 HRS.	
Max. Rm Temp Deg F		134 F	
Equip. No. and Location		11035 F.M.	
Recorded by		BARIA	
Witnessed By		MR. DALRYMPLE & MR. BANDER	

LOGGED HERE

REMARKS



00238919

Changes in Mud Type or Additional Samples

Date Sample No.
Depth—Driller
Type Fluid in Hole

Dens. Visc.

pH Fluid Loss

Source of Sample CIRCULATED

Rm Meas. Temp 2.1 @ 100 F

Rmf Meas. Temp 1.6 @ 100 F

Rmc Meas. Temp 2.6 @ 100 F

Source Rmf Rmc MEASURED

Rm BHT 1.6 134 F

Rmf BHT 1.2 134 F

Rmc BHT 1.2 134 F

Type Log Depth Scale Changes Scale Up Hole Scale Down Hole

Run No. Tool Type Equipment Data
ONE BQ3M NC

SPONTANEOUS POTENTIAL Millivolts	DEPTH	RESISTIVITY Ohms m ² /m	CONDUCTIVITY Millimhos m
20 4 7		16" NORMAL	INDUCTION CONDUCTIVITY 45" SPACING
	0	10	1000 0
	0	50	
	0	200	
	0	INDUCTION RESISTIVITY 40" SPACING	
	0	5	
	0	20	

00238920

200

300

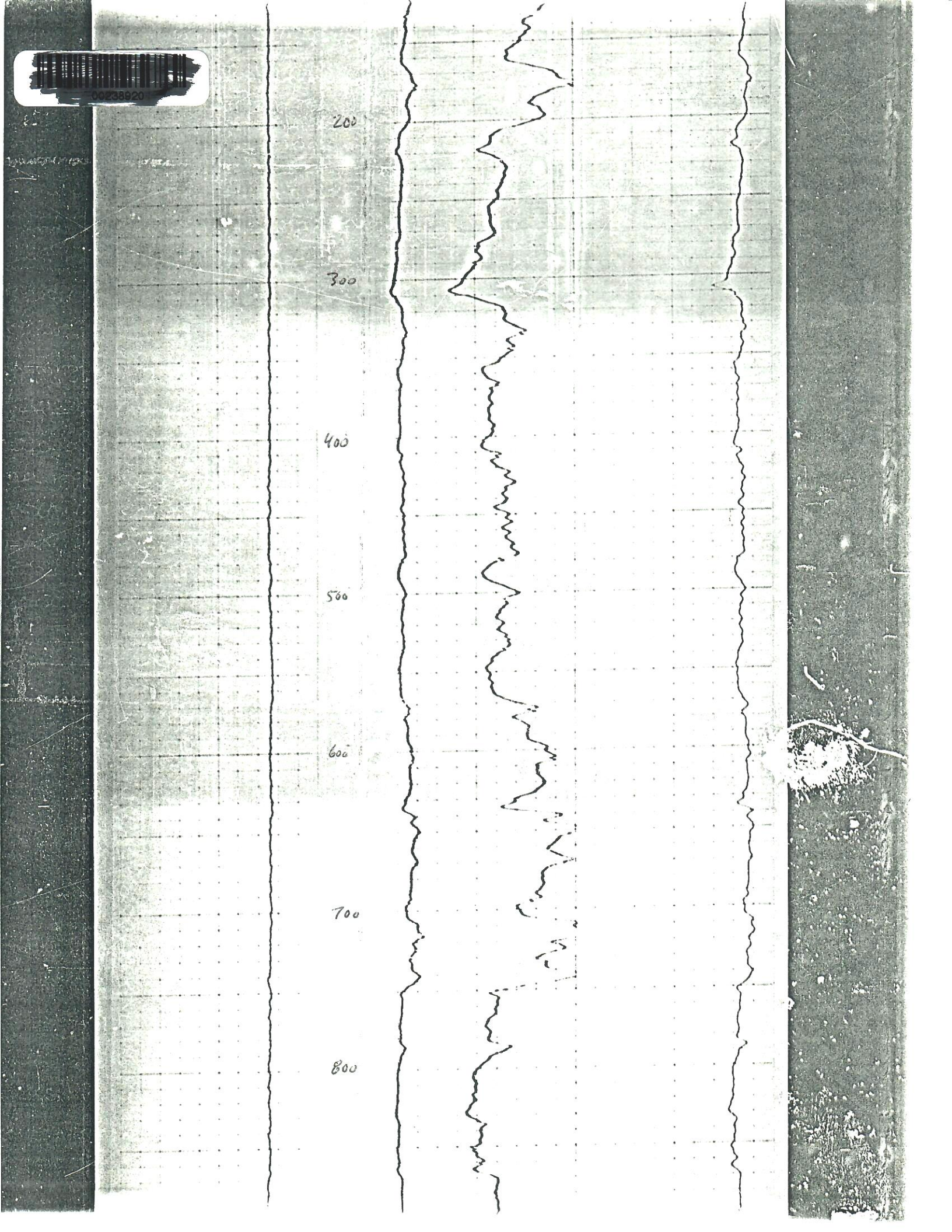
400

500

600

700

800





	QTR	QTR	SEC	TWNS	RANGE	PM	NAME	DEPTH	TPERF	BPERF
A	NW	NE	04	090N	0540W	S	FRANK CARL J			
B	NE	SW	08	090N	0540W	S	BUCHLEITER R			
C	SE	NW	09	090N	0540W	S	BUCHLEITER ROY	460		
D	SE	SE	10	090N	0540W	S	RIEKE LOUIE	460		
E	SW	SW	12	090N	0540W	S	SVACINA JIM JR	46		
F	NE	NE	14	090N	0540W	S	SVACINA JAMES			
G	NE	NE	14	090N	0540W	S	SVACINA JAMES JR.	82		
H	NW	NW	15	090N	0540W	S	GONYEA DAVID L			
I	NW	NE	16	090N	0540W	S	COLO STATE BOARD LAND COMM	54		
J	SE	NE	22	090N	0540W	S	WILSON HAROLD	113		
K	SE	SE	24	090N	0540W	S	TEXACO INC	412		
L	SE	SE	25	090N	0540W	S	SHELL OIL COMPANY	632		
M	NE	SW	26	090N	0540W	S	KESTER LEWIS H	600		
N	NE	SE	27	090N	0540W	S	BANEY ROBERT	574		
O	SE	NE	32	090N	0540W	S	LUFT ALBERT E.	80		
P	SW	SE	32	090N	0540W	S	RIEKE LLOYD			
Q	NE	NW	33	090N	0540W	S	KOENIG V C	55		
R	SW	NE	34	090N	0540W	S	WALTERS KATHERINE ESTATE	240		
S	SW	NE	34	090N	0540W	S	WALTERS KATHERINE ESTATE	200	100	200
T	SW	SE	34	090N	0540W	S	KOENIG MILDRED H & V C			

Letter=Choice | F10=Mark 1| PgUp/PgDn=±20 | UpAr/DnAr =±1 |Esc=Quit

	QTR	QTR	SEC	TWNS	RANGE	PM	NAME	DEPTH	TPERF	BPERF
A	SW	SE	02	090N	0550W	S	ROBERTS ROBERT	110		
B	NE	SW	04	090N	0550W	S	LAWEN HILDA			
C	NE	SW	04	090N	0550W	S	LOWEN HILDA	800		
D	NE	SW	04	090N	0550W	S	LOWEN HILDA	840	740	840
E	SE	NE	06	090N	0550W	S	CERVI RANCH	773		
F	NW	NW	08	090N	0550W	S	MILLER ALBERT	800		
G	NE	NE	09	090N	0550W	S	COLE RALPH	70		
H	NW	NE	11	090N	0550W	S	LOWEN D			
I	SW	SW	12	090N	0550W	S	MATHEWSON MAX			
J	SW	SW	12	090N	0550W	S	MATTHEWSON MAX	675		
K	SW	SW	12	090N	0550W	S	MATTHEWSON MAX	670	470	670
L	NE	SW	15	090N	0550W	S	COLE RALPH A	710		
M	SW	SE	17	090N	0550W	S	LOWEN DAN	146		
N	SW	SE	17	090N	0550W	S	LOWEN DAN	146		
O	NE	NE	21	090N	0550W	S	LOWEN DAN	760		
P	NE	NW	21	090N	0550W	S	RIVONKA NAOMI JEAN & DAN	548		
Q	NW	NW	23	090N	0550W	S	MATTHEWSON STEVEN E	805	646	805
R	NE	NW	27	090N	0550W	S	BUDIN HELEN	835	335	835
S	SE	SE	29	090N	0550W	S	PIVONKA DAN	34		
T	NW	NW	30	090N	0550W	S	NICKLAS JOHN	5667		

Letter=Choice | F10=Mark 1| PgUp/PgDn=±20 | UpAr/DnAr =±1 |Esc=Quit