

## Inspection Photos

Location Name: Walters-Wedco-Ryland SW 21 Pad

Location ID: 319437



Colorado Oil & Gas Conservation Commission  
40.29564, -104.8998, 1491.4m, 64°  
09/29/2022 09:32:03

**Production facility**



Colorado Oil & Gas Conservation Commission  
40.2951, -104.89971, 1487.9m, 2°  
09/29/2022 09:30:00

**Wellheads**

## Inspection Photos

Location Name: Walters-Wedco-Ryland SW 21 Pad

Location ID: 319437



**Walters 21LDU wellhead lacking sign**



**Crude oil contents and capacity placards**



## Inspection Photos

Location Name: Walters-Wedco-Ryland SW 21 Pad

Location ID: 319437



Colorado Oil & Gas Conservation Commission  
40.29531, -104.89959, 1488.5m, 151°  
09/29/2022 09:36:08

**Ryland 20XD**



Colorado Oil & Gas Conservation Commission  
40.29531, -104.89958, 1491.0m, 291°  
09/29/2022 09:36:26

**Ryland 20XD master valve leak and stained soil**



**COLORADO**  
Oil & Gas Conservation  
Commission  
Department of Natural Resources



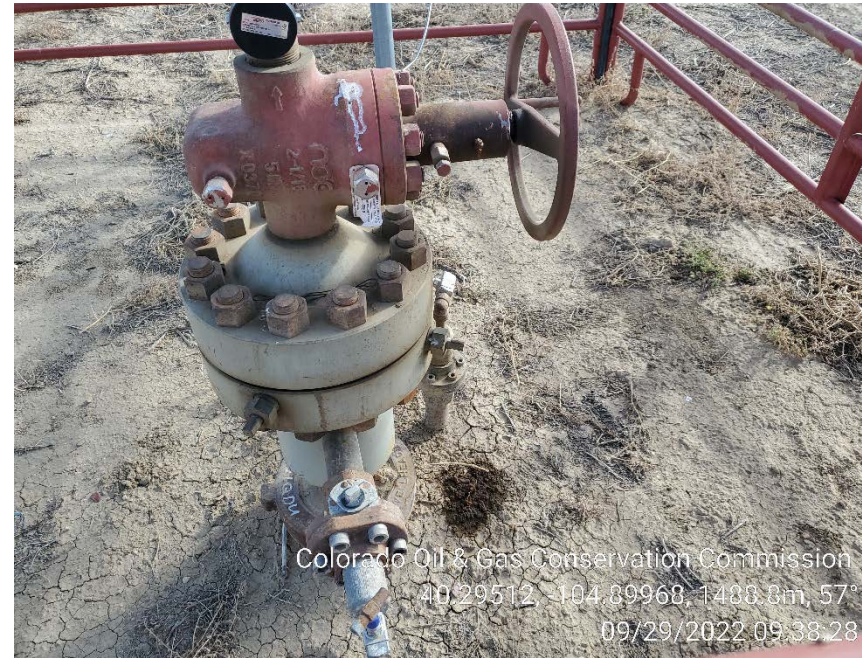
## Inspection Photos

Location Name: Walters-Wedco-Ryland SW 21 Pad

Location ID: 319437



Walters 21DQU wellhead



Walters 21DQU master valve leak and stained soil



## Inspection Photos

Location Name: Walters-Wedco-Ryland SW 21 Pad

Location ID: 319437



Colorado Oil & Gas Conservation Commission  
40:29541, -104.89951, 1494.9m, 324°  
09/29/2022 10:00:02

**Walters 23-21DU**



Colorado Oil & Gas Conservation Commission  
40:29537, -104.89955, 1490.5m, 13°  
09/29/2022 10:00:23

**Walters 23-21DU master valve leak and stained soil**



**COLORADO**  
Oil & Gas Conservation  
Commission  
Department of Natural Resources