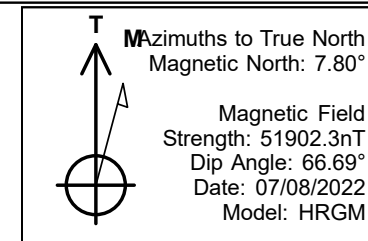


PDC Energy Inc. DJ Basin



Everest 08N
 Everest 6N66W34 1-11
 North American Datum 1983 , US State Plane 1983, Colorado Northern Zone
 Ground Elevation: 4697.0
 +N/-S +E/-W Northing Easting Longitude Slot
 0.0 0.0 1407670.67 3204888.44 40.450123 -104.763789
 Ensign 142 - RKB 28' WELL @ 4725.0ft (Ensign 142 - RKB 28')

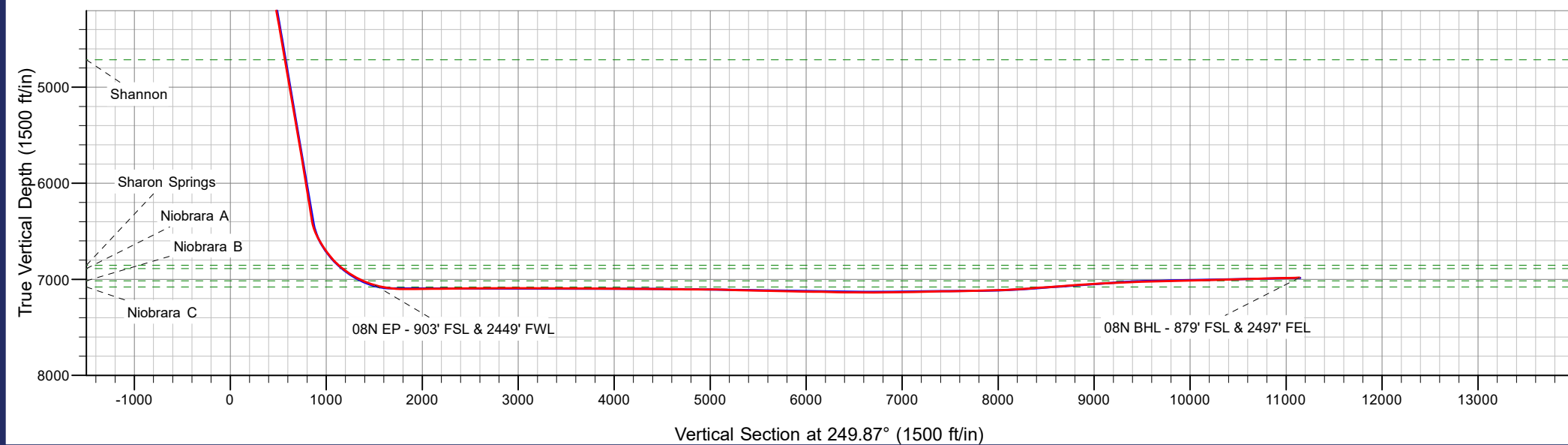
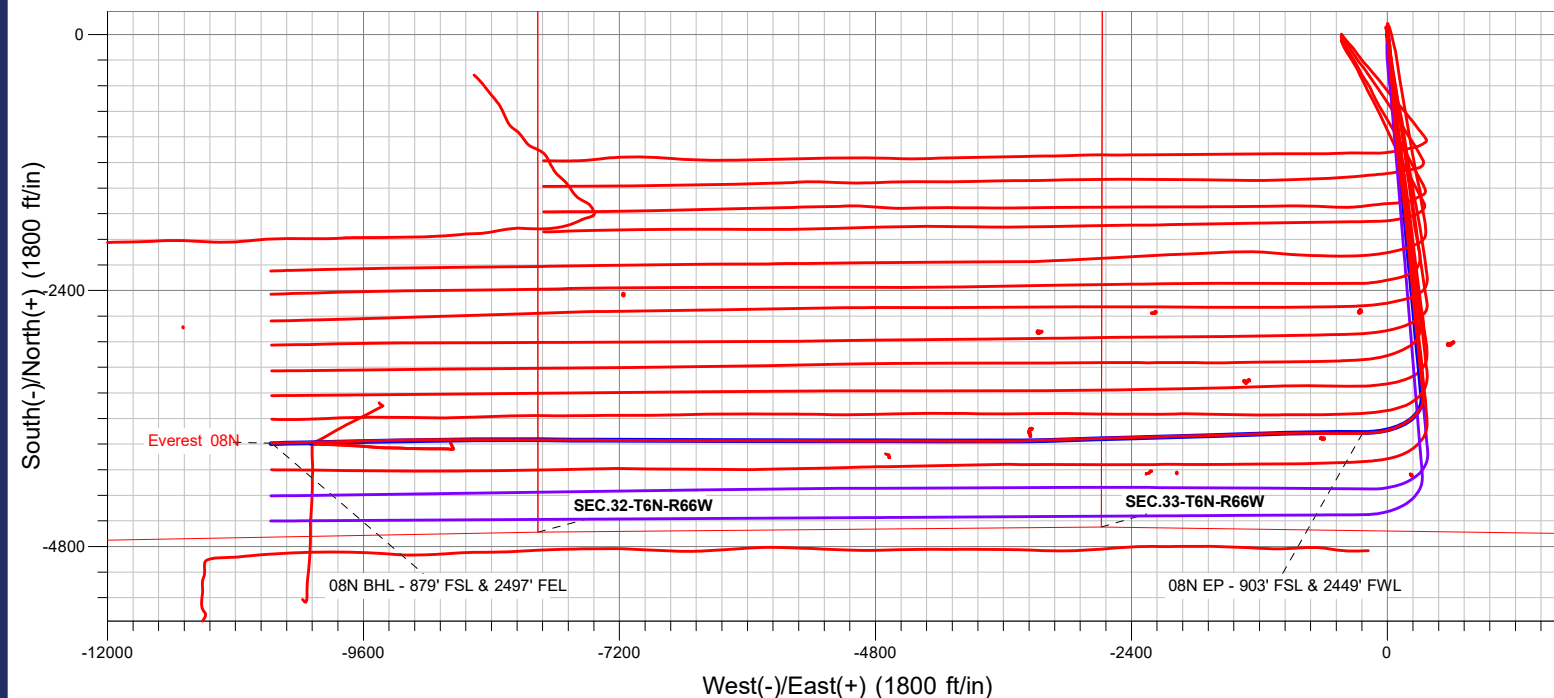
Everest 6N66W34 1-11
 Everest 08N
 Everest 08N Final Surveys
 9:26, August 02 2022



ANNOTATIONS

MD	TVD	Annotation
8393.6	7060.4	08N EP - 903' FSL & 2449' FWL
18631.0	6982.6	08N BHL - 879' FSL & 2497' FEL

FINAL SURVEY
Projected Bottom Hole Location
18631' MD / 6982.6' TVD
91.29° INC / 268.75° AZM
879' FSL / 2497' FEL





PDC Energy Inc. DJ Basin

Sec.34-T6N-R66W

Everest 6N66W34 1-11

Everest 08N

Everest 08N Wellbore #1

Design: Everest 08N Final Surveys

Standard Survey Report

02 August, 2022



Company:	PDC Energy Inc. DJ Basin	Local Co-ordinate Reference:	Well Everest 08N
Project:	Sec.34-T6N-R66W	TVD Reference:	WELL @ 4725.0ft (Ensign 142 - RKB 28')
Site:	Everest 6N66W34 1-11	MD Reference:	WELL @ 4725.0ft (Ensign 142 - RKB 28')
Well:	Everest 08N	North Reference:	True
Wellbore:	Everest 08N Wellbore #1	Survey Calculation Method:	Minimum Curvature
Design:	Everest 08N Final Surveys	Database:	US_EDM

Project	Sec.34-T6N-R66W, Adams County, CO		
Map System:	US State Plane 1983	System Datum:	Mean Sea Level
Geo Datum:	North American Datum 1983		
Map Zone:	Colorado Northern Zone		Using geodetic scale factor

Site	Everest 6N66W34 1-11				
Site Position:		Northing:	1,407,775.60 usft	Latitude:	40.450411
From:	Lat/Long	Easting:	3,204,888.40 usft	Longitude:	-104.763786
Position Uncertainty:	0.0 ft	Slot Radius:	13-3/16 "	Grid Convergence:	0.48 °

Well	Everest 08N					
Well Position	+N/-S	0.0 ft	Northing:	1,407,670.67 usft	Latitude:	40.450123
	+E/-W	0.0 ft	Easting:	3,204,888.44 usft	Longitude:	-104.763789
Position Uncertainty		0.0 ft	Wellhead Elevation:	ft	Ground Level:	4,697.0 ft

Wellbore	Everest 08N Wellbore #1				
Magnetics	Model Name	Sample Date	Declination (°)	Dip Angle (°)	Field Strength (nT)
	HRGM	07/08/2022	7.80	66.69	51,902.31979120

Design	Everest 08N Final Surveys				
Audit Notes:					
Version:	1.0	Phase:	ACTUAL	Tie On Depth:	0.0
Vertical Section:	Depth From (TVD) (ft)	+N/-S (ft)	+E/-W (ft)	Direction (°)	
	0.0	0.0	0.0	249.87	

Survey Program	Date	08/02/2022			
From (ft)	To (ft)	Survey (Wellbore)	Tool Name	Description	
69.0	18,631.0	Survey #1 (Everest 08N Wellbore #1)	MWD	MWD - Standard	

Survey										
Measured Depth (ft)	Inclination (°)	Azimuth (°)	Vertical Depth (ft)	+N/-S (ft)	+E/-W (ft)	Vertical Section (ft)	Dogleg Rate (°/100usft)	Build Rate (°/100usft)	Turn Rate (°/100usft)	
0.0	0.00	0.00	0.0	0.0	0.0	0.0	0.00	0.00	0.00	
69.0	0.88	175.70	69.0	-0.5	0.0	0.1	1.28	1.28	0.00	
161.0	0.79	161.46	161.0	-1.8	0.3	0.4	0.25	-0.10	-15.48	
252.0	0.62	177.99	252.0	-2.9	0.5	0.5	0.29	-0.19	18.16	
344.0	0.53	176.58	344.0	-3.8	0.6	0.8	0.10	-0.10	-1.53	
463.0	1.93	177.28	462.9	-6.4	0.7	1.6	1.18	1.18	0.59	
548.0	3.25	170.96	547.9	-10.2	1.1	2.5	1.59	1.55	-7.44	
636.0	4.92	171.31	635.6	-16.4	2.1	3.7	1.90	1.90	0.40	
721.0	6.51	170.78	720.2	-24.8	3.4	5.3	1.87	1.87	-0.62	
755.0	7.16	172.03	754.0	-28.8	4.0	6.1	1.96	1.91	3.69	
Fox Hills										

Company:	PDC Energy Inc. DJ Basin	Local Co-ordinate Reference:	Well Everest 08N
Project:	Sec.34-T6N-R66W	TVD Reference:	WELL @ 4725.0ft (Ensign 142 - RKB 28')
Site:	Everest 6N66W34 1-11	MD Reference:	WELL @ 4725.0ft (Ensign 142 - RKB 28')
Well:	Everest 08N	North Reference:	True
Wellbore:	Everest 08N Wellbore #1	Survey Calculation Method:	Minimum Curvature
Design:	Everest 08N Final Surveys	Database:	US_EDM

Survey									
Measured Depth (ft)	Inclination (°)	Azimuth (°)	Vertical Depth (ft)	+N/-S (ft)	+E/-W (ft)	Vertical Section (ft)	Dogleg Rate (°/100usft)	Build Rate (°/100usft)	Turn Rate (°/100usft)
808.0	8.18	173.59	806.5	-35.8	4.9	7.7	1.96	1.92	2.94
893.0	9.23	175.53	890.5	-48.6	6.1	11.0	1.28	1.24	2.28
981.0	11.08	176.05	977.1	-64.1	7.2	15.3	2.10	2.10	0.59
1,068.0	12.84	172.54	1,062.2	-82.0	9.1	19.7	2.19	2.02	-4.03
1,158.0	14.77	173.42	1,149.6	-103.3	11.7	24.6	2.16	2.14	0.98
1,243.0	17.15	176.40	1,231.4	-126.6	13.7	30.7	2.96	2.80	3.51
1,332.0	19.26	177.46	1,315.9	-154.3	15.2	38.9	2.40	2.37	1.19
1,421.0	21.63	176.05	1,399.3	-185.4	17.0	47.9	2.72	2.66	-1.58
1,511.0	21.90	175.00	1,482.9	-218.6	19.6	56.9	0.53	0.30	-1.17
1,598.0	23.39	174.65	1,563.2	-252.0	22.6	65.5	1.72	1.71	-0.40
1,647.0	23.39	174.12	1,608.1	-271.4	24.5	70.4	0.43	0.00	-1.08
1,788.0	24.30	174.16	1,737.1	-328.1	30.3	84.4	0.65	0.65	0.03
1,878.0	24.08	176.06	1,819.2	-364.8	33.5	94.1	0.90	-0.24	2.11
1,967.0	23.98	174.02	1,900.5	-400.9	36.6	103.6	0.94	-0.11	-2.29
2,056.0	26.51	173.30	1,981.0	-438.6	40.8	112.6	2.86	2.84	-0.81
2,145.0	29.76	173.85	2,059.4	-480.3	45.5	122.6	3.66	3.65	0.62
2,235.0	34.13	176.30	2,135.8	-527.7	49.5	135.1	5.06	4.86	2.72
2,324.0	32.90	175.53	2,210.0	-576.8	53.0	148.7	1.46	-1.38	-0.87
2,414.0	34.53	177.81	2,284.9	-626.6	55.9	163.2	2.29	1.81	2.53
2,503.0	34.38	176.59	2,358.3	-676.9	58.3	178.2	0.79	-0.17	-1.37
2,592.0	35.40	175.07	2,431.3	-727.7	62.0	192.2	1.51	1.15	-1.71
2,682.0	34.20	176.86	2,505.2	-778.9	65.7	206.4	1.75	-1.33	1.99
2,771.0	34.78	175.47	2,578.5	-829.2	69.0	220.5	1.10	0.65	-1.56
2,861.0	35.05	176.08	2,652.3	-880.6	72.8	234.7	0.49	0.30	0.68
2,951.0	35.96	174.82	2,725.6	-932.7	77.0	248.7	1.30	1.01	-1.40
3,040.0	34.57	174.77	2,798.2	-983.8	81.7	261.9	1.56	-1.56	-0.06
3,129.0	34.77	172.75	2,871.4	-1,034.2	87.2	274.1	1.31	0.22	-2.27
3,219.0	33.78	175.21	2,945.8	-1,084.6	92.5	286.4	1.89	-1.10	2.73
3,308.0	33.79	172.52	3,019.8	-1,133.8	97.8	298.4	1.68	0.01	-3.02
3,397.0	32.75	173.26	3,094.2	-1,182.2	103.8	309.4	1.25	-1.17	0.83
3,486.0	32.78	173.14	3,169.0	-1,230.0	109.5	320.5	0.08	0.03	-0.13
3,576.0	33.74	172.68	3,244.3	-1,279.0	115.6	331.6	1.10	1.07	-0.51
3,665.0	33.27	171.17	3,318.5	-1,327.6	122.5	341.9	1.08	-0.53	-1.70
3,754.0	34.08	173.90	3,392.6	-1,376.6	128.9	352.7	1.93	0.91	3.07
3,844.0	33.63	172.13	3,467.3	-1,426.3	135.0	364.1	1.20	-0.50	-1.97
3,934.0	32.70	172.26	3,542.7	-1,475.1	141.7	374.6	1.04	-1.03	0.14
3,973.7	33.10	172.81	3,576.0	-1,496.5	144.5	379.3	1.25	1.00	1.38
Parkman									
4,023.0	33.59	173.47	3,617.2	-1,523.4	147.7	385.6	1.25	1.00	1.35
4,112.0	33.85	172.44	3,691.2	-1,572.4	153.8	396.7	0.71	0.29	-1.16
4,201.0	34.58	174.01	3,764.8	-1,622.1	159.7	408.3	1.29	0.82	1.76
4,290.0	34.47	173.35	3,838.1	-1,672.3	165.2	420.4	0.44	-0.12	-0.74
4,380.0	33.91	173.99	3,912.6	-1,722.5	170.8	432.4	0.74	-0.62	0.71

Company:	PDC Energy Inc. DJ Basin	Local Co-ordinate Reference:	Well Everest 08N
Project:	Sec.34-T6N-R66W	TVD Reference:	WELL @ 4725.0ft (Ensign 142 - RKB 28')
Site:	Everest 6N66W34 1-11	MD Reference:	WELL @ 4725.0ft (Ensign 142 - RKB 28')
Well:	Everest 08N	North Reference:	True
Wellbore:	Everest 08N Wellbore #1	Survey Calculation Method:	Minimum Curvature
Design:	Everest 08N Final Surveys	Database:	US_EDM

Survey										
Measured Depth (ft)	Inclination (°)	Azimuth (°)	Vertical Depth (ft)	+N/-S (ft)	+E/-W (ft)	Vertical Section (ft)	Dogleg Rate (°/100usft)	Build Rate (°/100usft)	Turn Rate (°/100usft)	
4,469.0	34.12	173.21	3,986.4	-1,772.0	176.4	444.2	0.54	0.24	-0.88	
4,558.0	34.22	173.09	4,060.0	-1,821.6	182.3	455.7	0.14	0.11	-0.13	
4,611.2	34.24	174.85	4,104.0	-1,851.4	185.5	463.0	1.86	0.04	3.31	
Sussex										
4,647.0	34.27	176.03	4,133.6	-1,871.5	187.1	468.4	1.86	0.08	3.30	
4,737.0	33.80	173.74	4,208.2	-1,921.6	191.6	481.5	1.52	-0.52	-2.54	
4,828.0	34.01	175.94	4,283.7	-1,972.2	196.1	494.6	1.37	0.23	2.42	
4,917.0	33.75	175.19	4,357.6	-2,021.6	200.0	508.0	0.55	-0.29	-0.84	
5,007.0	34.24	174.09	4,432.2	-2,071.7	204.7	520.8	0.87	0.54	-1.22	
5,096.0	33.58	174.77	4,506.1	-2,121.2	209.5	533.3	0.86	-0.74	0.76	
5,186.0	34.04	174.66	4,580.8	-2,171.0	214.1	546.1	0.52	0.51	-0.12	
5,275.0	34.00	175.82	4,654.6	-2,220.6	218.2	559.3	0.73	-0.04	1.30	
5,346.6	33.84	174.86	4,714.0	-2,260.5	221.5	570.0	0.79	-0.23	-1.35	
Shannon										
5,367.0	33.79	174.58	4,731.0	-2,271.8	222.5	572.9	0.79	-0.22	-1.35	
5,456.0	34.44	174.04	4,804.6	-2,321.4	227.5	585.3	0.81	0.73	-0.61	
5,547.0	34.25	174.82	4,879.8	-2,372.5	232.5	598.2	0.53	-0.21	0.86	
5,637.0	34.01	174.42	4,954.3	-2,422.8	237.2	611.1	0.37	-0.27	-0.44	
5,726.0	33.96	174.35	5,028.1	-2,472.3	242.1	623.6	0.07	-0.06	-0.08	
5,814.0	33.62	174.89	5,101.2	-2,521.0	246.7	636.0	0.52	-0.39	0.61	
5,904.0	34.87	174.03	5,175.6	-2,571.5	251.5	648.8	1.49	1.39	-0.96	
5,994.0	34.94	174.03	5,249.4	-2,622.7	256.9	661.4	0.08	0.08	0.00	
6,084.0	34.27	174.59	5,323.5	-2,673.5	262.0	674.1	0.82	-0.74	0.62	
6,173.0	34.81	173.88	5,396.8	-2,723.7	267.0	686.6	0.76	0.61	-0.80	
6,263.0	34.72	174.29	5,470.7	-2,774.8	272.3	699.2	0.28	-0.10	0.46	
6,352.0	34.37	173.76	5,544.1	-2,825.0	277.6	711.6	0.52	-0.39	-0.60	
6,442.0	34.44	175.11	5,618.3	-2,875.6	282.5	724.4	0.85	0.08	1.50	
6,530.0	34.11	174.59	5,691.0	-2,924.9	287.0	737.2	0.50	-0.38	-0.59	
6,620.0	34.44	174.74	5,765.4	-2,975.4	291.7	750.1	0.38	0.37	0.17	
6,709.0	33.34	173.96	5,839.3	-3,024.8	296.6	762.5	1.33	-1.24	-0.88	
6,799.0	32.94	173.50	5,914.6	-3,073.7	301.9	774.3	0.52	-0.44	-0.51	
6,889.0	33.30	174.28	5,990.0	-3,122.6	307.2	786.2	0.62	0.40	0.87	
6,979.0	33.53	174.45	6,065.1	-3,171.9	312.0	798.6	0.28	0.26	0.19	
7,068.0	33.40	174.20	6,139.4	-3,220.8	316.9	810.9	0.21	-0.15	-0.28	
7,157.0	32.99	173.07	6,213.9	-3,269.2	322.3	822.5	0.83	-0.46	-1.27	
7,246.0	33.44	174.23	6,288.3	-3,317.6	327.7	834.1	0.87	0.51	1.30	
7,336.0	32.82	174.45	6,363.7	-3,366.6	332.5	846.4	0.70	-0.69	0.24	
7,426.0	34.62	181.27	6,438.6	-3,416.4	334.3	861.9	4.66	2.00	7.58	
7,516.0	35.47	195.07	6,512.4	-3,467.3	326.9	886.3	8.84	0.94	15.33	
7,605.0	36.00	211.20	6,584.8	-3,514.7	306.6	921.7	10.58	0.60	18.12	
7,694.0	35.87	224.60	6,657.0	-3,555.7	274.7	965.7	8.82	-0.15	15.06	
7,784.0	38.56	230.48	6,728.6	-3,592.4	234.6	1,016.1	4.95	2.99	6.53	
7,873.0	42.69	236.80	6,796.2	-3,626.6	187.9	1,071.7	6.55	4.64	7.10	
7,954.7	49.22	240.78	6,853.0	-3,656.9	137.6	1,129.3	8.72	7.99	4.88	

Company:	PDC Energy Inc. DJ Basin	Local Co-ordinate Reference:	Well Everest 08N
Project:	Sec.34-T6N-R66W	TVD Reference:	WELL @ 4725.0ft (Ensign 142 - RKB 28')
Site:	Everest 6N66W34 1-11	MD Reference:	WELL @ 4725.0ft (Ensign 142 - RKB 28')
Well:	Everest 08N	North Reference:	True
Wellbore:	Everest 08N Wellbore #1	Survey Calculation Method:	Minimum Curvature
Design:	Everest 08N Final Surveys	Database:	US_EDM

Survey

Measured Depth (ft)	Inclination (°)	Azimuth (°)	Vertical Depth (ft)	+N/-S (ft)	+E/-W (ft)	Vertical Section (ft)	Dogleg Rate (°/100usft)	Build Rate (°/100usft)	Turn Rate (°/100usft)
Sharon Springs									
7,962.0	49.81	241.10	6,857.7	-3,659.6	132.8	1,134.8	8.72	8.08	4.34
8,008.3	51.83	245.00	6,887.0	-3,675.8	100.8	1,170.4	7.84	4.35	8.42
Niobrara A									
8,052.0	53.84	248.48	6,913.4	-3,689.5	68.8	1,205.2	7.84	4.61	7.97
8,141.0	59.24	255.88	6,962.5	-3,712.1	-1.8	1,279.2	9.21	6.07	8.31
8,231.0	65.19	262.68	7,004.5	-3,726.7	-80.0	1,357.7	9.40	6.61	7.56
8,256.8	66.52	263.58	7,015.0	-3,729.6	-103.3	1,380.5	6.06	5.17	3.48
Niobrara B									
8,320.0	69.81	265.70	7,038.5	-3,735.0	-161.8	1,437.3	6.06	5.20	3.36
8,393.6	75.61	267.73	7,060.4	-3,739.0	-231.9	1,504.5	8.30	7.87	2.76
08N EP - 903' FSL & 2449' FWL									
8,410.0	76.90	268.17	7,064.3	-3,739.6	-247.8	1,519.6	8.30	7.89	2.67
8,481.8	79.43	268.88	7,079.0	-3,741.4	-318.0	1,586.2	3.66	3.53	0.99
Niobrara C									
8,499.0	80.04	269.05	7,082.1	-3,741.7	-335.0	1,602.2	3.66	3.53	0.98
8,588.0	83.86	269.45	7,094.5	-3,742.9	-423.1	1,685.3	4.32	4.29	0.45
8,678.0	89.08	271.06	7,100.1	-3,742.5	-512.9	1,769.5	6.07	5.80	1.79
8,768.0	89.82	271.26	7,100.9	-3,740.6	-602.8	1,853.3	0.85	0.82	0.22
8,857.0	90.70	270.91	7,100.5	-3,739.0	-691.8	1,936.3	1.06	0.99	-0.39
8,946.0	90.56	271.34	7,099.6	-3,737.2	-780.8	2,019.3	0.51	-0.16	0.48
9,035.0	90.99	269.93	7,098.4	-3,736.2	-869.8	2,102.5	1.66	0.48	-1.58
9,125.0	90.64	268.84	7,097.1	-3,737.2	-959.8	2,187.3	1.27	-0.39	-1.21
9,214.0	90.57	267.98	7,096.1	-3,739.7	-1,048.7	2,271.7	0.97	-0.08	-0.97
9,304.0	90.83	267.40	7,095.0	-3,743.3	-1,138.6	2,357.3	0.71	0.29	-0.64
9,394.0	90.20	267.97	7,094.2	-3,746.9	-1,228.6	2,443.0	0.94	-0.70	0.63
9,483.0	90.60	268.68	7,093.6	-3,749.5	-1,317.5	2,527.4	0.92	0.45	0.80
9,572.0	90.16	268.90	7,093.0	-3,751.4	-1,406.5	2,611.6	0.55	-0.49	0.25
9,662.0	89.81	268.10	7,093.0	-3,753.8	-1,496.5	2,696.9	0.97	-0.39	-0.89
9,751.0	90.31	268.38	7,092.9	-3,756.5	-1,585.4	2,781.4	0.64	0.56	0.31
9,840.0	89.94	268.31	7,092.7	-3,759.1	-1,674.4	2,865.8	0.42	-0.42	-0.08
9,930.0	90.26	268.72	7,092.6	-3,761.4	-1,764.4	2,951.1	0.58	0.36	0.46
10,019.0	89.89	268.12	7,092.5	-3,763.8	-1,853.3	3,035.4	0.79	-0.42	-0.67
10,108.0	90.79	268.99	7,091.9	-3,766.1	-1,942.3	3,119.7	1.41	1.01	0.98
10,198.0	90.10	268.13	7,091.2	-3,768.4	-2,032.3	3,205.0	1.23	-0.77	-0.96
10,287.0	89.10	267.91	7,091.9	-3,771.4	-2,121.2	3,289.6	1.15	-1.12	-0.25
10,376.0	90.00	268.66	7,092.6	-3,774.1	-2,210.2	3,374.0	1.32	1.01	0.84
10,466.0	89.56	269.10	7,092.9	-3,775.9	-2,300.1	3,459.1	0.69	-0.49	0.49
10,556.0	89.26	267.79	7,093.8	-3,778.3	-2,390.1	3,544.4	1.49	-0.33	-1.46
10,646.0	89.50	268.12	7,094.8	-3,781.5	-2,480.0	3,629.9	0.45	0.27	0.37
10,735.0	89.58	268.49	7,095.5	-3,784.1	-2,569.0	3,714.4	0.43	0.09	0.42
10,824.0	89.93	268.94	7,095.9	-3,786.1	-2,658.0	3,798.6	0.64	0.39	0.51
10,913.0	89.56	268.24	7,096.3	-3,788.3	-2,746.9	3,882.9	0.89	-0.42	-0.79
11,002.0	89.74	268.24	7,096.8	-3,791.1	-2,835.9	3,967.4	0.20	0.20	0.00

Company:	PDC Energy Inc. DJ Basin	Local Co-ordinate Reference:	Well Everest 08N
Project:	Sec.34-T6N-R66W	TVD Reference:	WELL @ 4725.0ft (Ensign 142 - RKB 28')
Site:	Everest 6N66W34 1-11	MD Reference:	WELL @ 4725.0ft (Ensign 142 - RKB 28')
Well:	Everest 08N	North Reference:	True
Wellbore:	Everest 08N Wellbore #1	Survey Calculation Method:	Minimum Curvature
Design:	Everest 08N Final Surveys	Database:	US_EDM

Survey									
Measured Depth (ft)	Inclination (°)	Azimuth (°)	Vertical Depth (ft)	+N/-S (ft)	+E/-W (ft)	Vertical Section (ft)	Dogleg Rate (°/100usft)	Build Rate (°/100usft)	Turn Rate (°/100usft)
11,092.0	89.24	267.34	7,097.7	-3,794.5	-2,925.8	4,053.0	1.14	-0.56	-1.00
11,181.0	89.61	268.23	7,098.5	-3,798.0	-3,014.8	4,137.7	1.08	0.42	1.00
11,271.0	89.92	268.41	7,098.9	-3,800.6	-3,104.7	4,223.0	0.40	0.34	0.20
11,361.0	89.48	268.36	7,099.4	-3,803.1	-3,194.7	4,308.4	0.49	-0.49	-0.06
11,450.0	89.70	268.26	7,100.0	-3,805.8	-3,283.6	4,392.8	0.27	0.25	-0.11
11,540.0	89.77	267.88	7,100.4	-3,808.8	-3,373.6	4,478.3	0.43	0.08	-0.42
11,629.0	89.27	268.36	7,101.2	-3,811.7	-3,462.5	4,562.8	0.78	-0.56	0.54
11,718.0	88.56	268.65	7,102.9	-3,814.0	-3,551.5	4,647.1	0.86	-0.80	0.33
11,808.0	90.13	271.85	7,103.9	-3,813.6	-3,641.5	4,731.5	3.96	1.74	3.56
11,897.0	89.32	269.83	7,104.3	-3,812.3	-3,730.5	4,814.6	2.45	-0.91	-2.27
11,987.0	89.34	268.98	7,105.4	-3,813.3	-3,820.4	4,899.4	0.94	0.02	-0.94
12,076.0	90.57	271.42	7,105.4	-3,813.0	-3,909.4	4,982.9	3.07	1.38	2.74
12,166.0	88.84	269.88	7,105.9	-3,811.9	-3,999.4	5,067.0	2.57	-1.92	-1.71
12,256.0	88.10	269.65	7,108.3	-3,812.3	-4,089.4	5,151.6	0.86	-0.82	-0.26
12,346.0	88.37	269.49	7,111.1	-3,813.0	-4,179.3	5,236.3	0.35	0.30	-0.18
12,435.0	88.57	270.65	7,113.5	-3,812.9	-4,268.3	5,319.8	1.32	0.22	1.30
12,525.0	88.80	270.37	7,115.5	-3,812.1	-4,358.3	5,404.0	0.40	0.26	-0.31
12,614.0	89.32	270.68	7,117.0	-3,811.3	-4,447.3	5,487.2	0.68	0.58	0.35
12,704.0	89.13	269.66	7,118.2	-3,811.0	-4,537.3	5,571.6	1.15	-0.21	-1.13
12,793.0	88.43	269.71	7,120.1	-3,811.5	-4,626.2	5,655.4	0.79	-0.79	0.06
12,882.0	89.04	270.16	7,122.1	-3,811.6	-4,715.2	5,738.9	0.85	0.69	0.51
12,972.0	88.48	269.82	7,124.0	-3,811.6	-4,805.2	5,823.4	0.73	-0.62	-0.38
13,061.0	89.20	270.16	7,125.8	-3,811.6	-4,894.2	5,907.0	0.89	0.81	0.38
13,150.0	89.14	270.75	7,127.1	-3,810.9	-4,983.2	5,990.3	0.67	-0.07	0.66
13,240.0	89.00	270.17	7,128.6	-3,810.2	-5,073.1	6,074.5	0.66	-0.16	-0.64
13,329.0	89.27	270.76	7,129.9	-3,809.5	-5,162.1	6,157.8	0.73	0.30	0.66
13,418.0	88.40	269.48	7,131.7	-3,809.3	-5,251.1	6,241.3	1.74	-0.98	-1.44
13,508.0	89.27	270.74	7,133.5	-3,809.1	-5,341.1	6,325.7	1.70	0.97	1.40
13,597.0	89.39	270.55	7,134.6	-3,808.1	-5,430.1	6,408.9	0.25	0.13	-0.21
13,686.0	89.79	270.12	7,135.2	-3,807.6	-5,519.1	6,492.3	0.66	0.45	-0.48
13,776.0	89.64	270.20	7,135.7	-3,807.3	-5,609.1	6,576.7	0.19	-0.17	0.09
13,865.0	89.57	269.22	7,136.3	-3,807.8	-5,698.1	6,660.4	1.10	-0.08	-1.10
13,954.0	90.30	269.77	7,136.4	-3,808.6	-5,787.1	6,744.3	1.03	0.82	0.62
14,043.0	90.60	269.65	7,135.7	-3,809.0	-5,876.1	6,828.0	0.36	0.34	-0.13
14,132.0	90.79	270.20	7,134.6	-3,809.1	-5,965.0	6,911.6	0.65	0.21	0.62
14,221.0	90.74	270.15	7,133.4	-3,808.9	-6,054.0	6,995.0	0.08	-0.06	-0.06
14,311.0	90.93	269.95	7,132.1	-3,808.8	-6,144.0	7,079.5	0.31	0.21	-0.22
14,400.0	90.83	269.86	7,130.7	-3,808.9	-6,233.0	7,163.1	0.15	-0.11	-0.10
14,489.0	91.40	270.55	7,129.0	-3,808.6	-6,322.0	7,246.6	1.01	0.64	0.78
14,578.0	91.24	270.11	7,127.0	-3,808.1	-6,411.0	7,329.9	0.53	-0.18	-0.49
14,668.0	90.83	270.02	7,125.3	-3,808.0	-6,501.0	7,414.4	0.47	-0.46	-0.10
14,758.0	90.75	269.71	7,124.1	-3,808.2	-6,590.9	7,498.9	0.36	-0.09	-0.34
14,847.0	91.43	270.39	7,122.4	-3,808.1	-6,679.9	7,582.5	1.08	0.76	0.76

Company:	PDC Energy Inc. DJ Basin	Local Co-ordinate Reference:	Well Everest 08N
Project:	Sec.34-T6N-R66W	TVD Reference:	WELL @ 4725.0ft (Ensign 142 - RKB 28')
Site:	Everest 6N66W34 1-11	MD Reference:	WELL @ 4725.0ft (Ensign 142 - RKB 28')
Well:	Everest 08N	North Reference:	True
Wellbore:	Everest 08N Wellbore #1	Survey Calculation Method:	Minimum Curvature
Design:	Everest 08N Final Surveys	Database:	US_EDM

Survey									
Measured Depth (ft)	Inclination (°)	Azimuth (°)	Vertical Depth (ft)	+N/-S (ft)	+E/-W (ft)	Vertical Section (ft)	Dogleg Rate (°/100usft)	Build Rate (°/100usft)	Turn Rate (°/100usft)
14,937.0	90.76	270.17	7,120.7	-3,807.7	-6,769.9	7,666.8	0.78	-0.74	-0.24
15,027.0	90.95	270.37	7,119.3	-3,807.3	-6,859.9	7,751.1	0.31	0.21	0.22
15,116.0	91.10	270.40	7,117.7	-3,806.7	-6,948.9	7,834.5	0.17	0.17	0.03
15,205.0	90.95	270.37	7,116.2	-3,806.1	-7,037.9	7,917.8	0.17	-0.17	-0.03
15,295.0	90.80	269.91	7,114.8	-3,805.9	-7,127.9	8,002.2	0.54	-0.17	-0.51
15,385.0	93.59	270.24	7,111.3	-3,805.7	-7,217.8	8,086.6	3.12	3.10	0.37
15,474.0	93.58	270.02	7,105.8	-3,805.5	-7,306.6	8,170.0	0.25	-0.01	-0.25
15,564.0	94.01	270.85	7,099.8	-3,804.9	-7,396.4	8,254.0	1.04	0.48	0.92
15,653.0	93.62	270.68	7,093.9	-3,803.7	-7,485.2	8,337.0	0.48	-0.44	-0.19
15,743.0	93.94	270.21	7,088.0	-3,803.0	-7,575.0	8,421.1	0.63	0.36	-0.52
15,832.0	93.59	270.25	7,082.1	-3,802.6	-7,663.8	8,504.3	0.40	-0.39	0.04
15,921.0	93.87	270.40	7,076.3	-3,802.1	-7,752.6	8,587.5	0.36	0.31	0.17
16,010.0	93.92	270.57	7,070.3	-3,801.4	-7,841.4	8,670.7	0.20	0.06	0.19
16,099.0	93.24	270.27	7,064.7	-3,800.7	-7,930.2	8,753.8	0.83	-0.76	-0.34
16,189.0	93.53	270.40	7,059.4	-3,800.2	-8,020.1	8,838.0	0.35	0.32	0.14
16,278.0	93.54	270.59	7,053.9	-3,799.4	-8,108.9	8,921.1	0.21	0.01	0.21
16,368.0	93.42	269.88	7,048.5	-3,799.0	-8,198.7	9,005.4	0.80	-0.13	-0.79
16,457.0	93.18	269.78	7,043.3	-3,799.3	-8,287.6	9,088.9	0.29	-0.27	-0.11
16,546.0	93.34	270.29	7,038.3	-3,799.3	-8,376.4	9,172.3	0.60	0.18	0.57
16,636.0	93.67	270.33	7,032.8	-3,798.8	-8,466.3	9,256.5	0.37	0.37	0.04
16,725.0	92.02	270.11	7,028.3	-3,798.4	-8,555.2	9,339.8	1.87	-1.85	-0.25
16,815.0	91.71	270.13	7,025.4	-3,798.2	-8,645.1	9,424.2	0.35	-0.34	0.02
16,904.0	91.12	269.91	7,023.2	-3,798.2	-8,734.1	9,507.7	0.71	-0.66	-0.25
16,994.0	90.97	269.97	7,021.6	-3,798.3	-8,824.1	9,592.2	0.18	-0.17	0.07
17,084.0	91.26	269.80	7,019.8	-3,798.5	-8,914.1	9,676.8	0.37	0.32	-0.19
17,173.0	91.31	269.84	7,017.8	-3,798.8	-9,003.0	9,760.4	0.07	0.06	0.04
17,263.0	91.41	269.39	7,015.7	-3,799.4	-9,093.0	9,845.1	0.51	0.11	-0.50
17,352.0	91.11	267.95	7,013.7	-3,801.4	-9,182.0	9,929.3	1.65	-0.34	-1.62
17,442.0	91.27	268.79	7,011.9	-3,804.0	-9,271.9	10,014.7	0.95	0.18	0.93
17,531.0	91.58	269.01	7,009.7	-3,805.7	-9,360.9	10,098.8	0.43	0.35	0.25
17,619.0	91.28	268.49	7,007.5	-3,807.6	-9,448.8	10,182.0	0.68	-0.34	-0.59
17,709.0	91.31	268.14	7,005.4	-3,810.3	-9,538.7	10,267.4	0.39	0.03	-0.39
17,798.0	91.63	268.47	7,003.1	-3,812.9	-9,627.7	10,351.8	0.52	0.36	0.37
17,888.0	90.94	268.63	7,001.1	-3,815.2	-9,717.6	10,437.0	0.79	-0.77	0.18
17,977.0	91.61	268.76	6,999.1	-3,817.2	-9,806.6	10,521.2	0.77	0.75	0.15
18,066.0	91.93	268.88	6,996.4	-3,819.0	-9,895.5	10,605.4	0.38	0.36	0.13
18,156.0	91.31	268.52	6,993.9	-3,821.1	-9,985.5	10,690.5	0.80	-0.69	-0.40
18,245.0	91.24	268.77	6,991.9	-3,823.2	-10,074.4	10,774.8	0.29	-0.08	0.28
18,334.0	91.58	268.50	6,989.7	-3,825.3	-10,163.4	10,859.0	0.49	0.38	-0.30
18,429.0	91.28	268.68	6,987.3	-3,827.6	-10,258.3	10,948.9	0.37	-0.32	0.19
18,524.0	91.44	268.71	6,985.1	-3,829.8	-10,353.2	11,038.8	0.17	0.17	0.03
18,586.0	91.29	268.75	6,983.6	-3,831.2	-10,415.2	11,097.5	0.25	-0.24	0.06
18,631.0	91.29	268.75	6,982.6	-3,832.2	-10,460.2	11,140.1	0.00	0.00	0.00
08N BHL - 879' FSL & 2497' FEL									

Company:	PDC Energy Inc. DJ Basin	Local Co-ordinate Reference:	Well Everest 08N
Project:	Sec.34-T6N-R66W	TVD Reference:	WELL @ 4725.0ft (Ensign 142 - RKB 28')
Site:	Everest 6N66W34 1-11	MD Reference:	WELL @ 4725.0ft (Ensign 142 - RKB 28')
Well:	Everest 08N	North Reference:	True
Wellbore:	Everest 08N Wellbore #1	Survey Calculation Method:	Minimum Curvature
Design:	Everest 08N Final Surveys	Database:	US_EDM

Measured Depth (ft)	Inclination (°)	Azimuth (°)	Vertical Depth (ft)	+N/-S (ft)	+E/-W (ft)	Vertical Section (ft)	Dogleg Rate (°/100usft)	Build Rate (°/100usft)	Turn Rate (°/100usft)
---------------------	-----------------	-------------	---------------------	------------	------------	-----------------------	-------------------------	------------------------	-----------------------

Measured Depth (ft)	Vertical Depth (ft)	Name	Lithology	Dip (°)	Dip Direction (°)
755.0	754.0	Fox Hills		0.00	
3,973.7	3,576.0	Parkman		0.00	
4,611.2	4,104.0	Sussex		0.00	
5,346.6	4,714.0	Shannon		0.00	
7,954.7	6,853.0	Sharon Springs		0.00	
8,008.3	6,887.0	Niobrara A		0.00	
8,256.8	7,015.0	Niobrara B		0.00	
8,481.8	7,079.0	Niobrara C		0.00	

Measured Depth (ft)	Vertical Depth (ft)	Local Coordinates		Comment
		+N/-S (ft)	+E/-W (ft)	
8,393.6	7,060.4	-3,739.0	-231.9	08N EP - 903' FSL & 2449' FWL
18,631.0	6,982.6	-3,832.2	-10,460.2	08N BHL - 879' FSL & 2497' FEL

Checked By: _____ Approved By: _____ Date: _____