

# Cement Post Job Report

**Client:** PDC Energy

**Well Name:** Everest 8N

**API #:** 05-123-51668-00

**Job Date:** July 14, 2022

**Job Type:** New Well - 5.5" Production String

**Cement Company & Contact:** EXERO Well Integrity -  
Cheve Meyer 720-239-3819



ROCK SOLID  
WELL INTEGRITY  
SOLUTIONS

### TREATMENT REPORT

Client	Well	Rig	Date	Job Type				
PDC Energy	Everest 08N	Ensign 142	7/14/2022	Production				
Connection Type	Thread Type	Number of Stages	BHST Deg	BHCT Deg				
5 1/2" HP Cement Head	Buttress	1	225	185				
Well MD (ft)	Well TVD (ft)	Deg Dev.	Max-Cas/DP PSI	Max Ann. PSI				
18631	6983	90	8000	2000				
Packer/Retainer/CIBP/DV Tool Depths		Top of Perfs	Bottom of Perfs	Number of Holes				
pkr@ 3471								
String	Casing/Tubing Type	OD	Wt/ft	ID	OH Size	% XS Lead	% XS Tail	Depth (ft)
Surface	Casing	9.625	36					1696
Production	Casing	5.5	20	4.778	8.5	0	0	18625

### PRE-JOB MUD AND WELL CONDITIONS

Mud Type	OBM	Pipe Rotation		Circulation Data				Water Requirements (bbls)	
Mud wt. ppg	10.6	Rotate Y,N	Yes	Circulate Time (hrs)	2			Spacers	140
Flow Temp		Rate		Circulation Rate (bpm)	10			Stage 1 Lead	118
Vis. Sec/qt		Torque Val.		Full Circ?	Full			Stage 1 Tail	263
PV (cP)		Time		Gas Present (Y,N)	no	Units		Stage 2 Lead	0
Yield Pt		Pipe Reciprocation		Centralizers/Plugs				Stage 2 Tail	0
10 sec gel		Recip Y,N	Yes	Quantity & Type				Displacement	413
10 min gel		Stroke (ft)		Top Plug/Type	operator provided			Wash up	20
30 min gel		Recip time		Bottom Plug/Type/Burst p	operator provided			Total + 10% Safety	1050

### PRE-JOB CALCULATED MATERIALS, VOLUMES, & RATES

Prelflush & Spacers		Stage 1 Lead: Class G		Stage 1 Tail: Class G		Stage 2 Lead: NA		Stage 2 Tail: NA		Displacement	
Spacer 1	Spacer	Density	12.9	Density	13.7	Density		Density		Fluid Type	Water
Density	12	Sacks	1276	Sacks	1665	Sacks		Sacks		Dens. ppg	8.33
Volume	140	Vol/bbls	256.8	Vol/bbls	406.3	Vol/bbls	0.0	Vol/bbls	0.0	Vol. bbl	413
Rate	10	Rate	10	Rate	10	Rate		Rate		Rate bpm	10
Spacer 2		Yield	1.13	Yield	1.37	Yield		Yield		Clay Stay?	
Density		Gal/Sk	3.90	Gal/Sk	6.63	Gal/Sk		Gal/Sk		Biocide ?	Yes
Volume		% Excess	0	% Excess	0	% Excess		% Excess		Slow @ bbl	390
Rate		TOL (ft)	2393	TOT (ft)	8692	TOL (ft)		TOT (ft)		Bump PSI	3500

### POST JOB DETAILS, FINAL VOLUMES & PRESSURES

Final Displacement (bbls)	413
Bump Plug?	Yes
Final Bump Pressure (psi)	3500
Full Returns throughout job?	Full
Vol away/Time when returns lost	
Vol away/Time When returns regained	

Top out cement type	NA
Density	NA
Sack Quantity	NA
Mix water requirement (gal/sk)	NA
Yield	NA

### Summary of Additives Used on Job

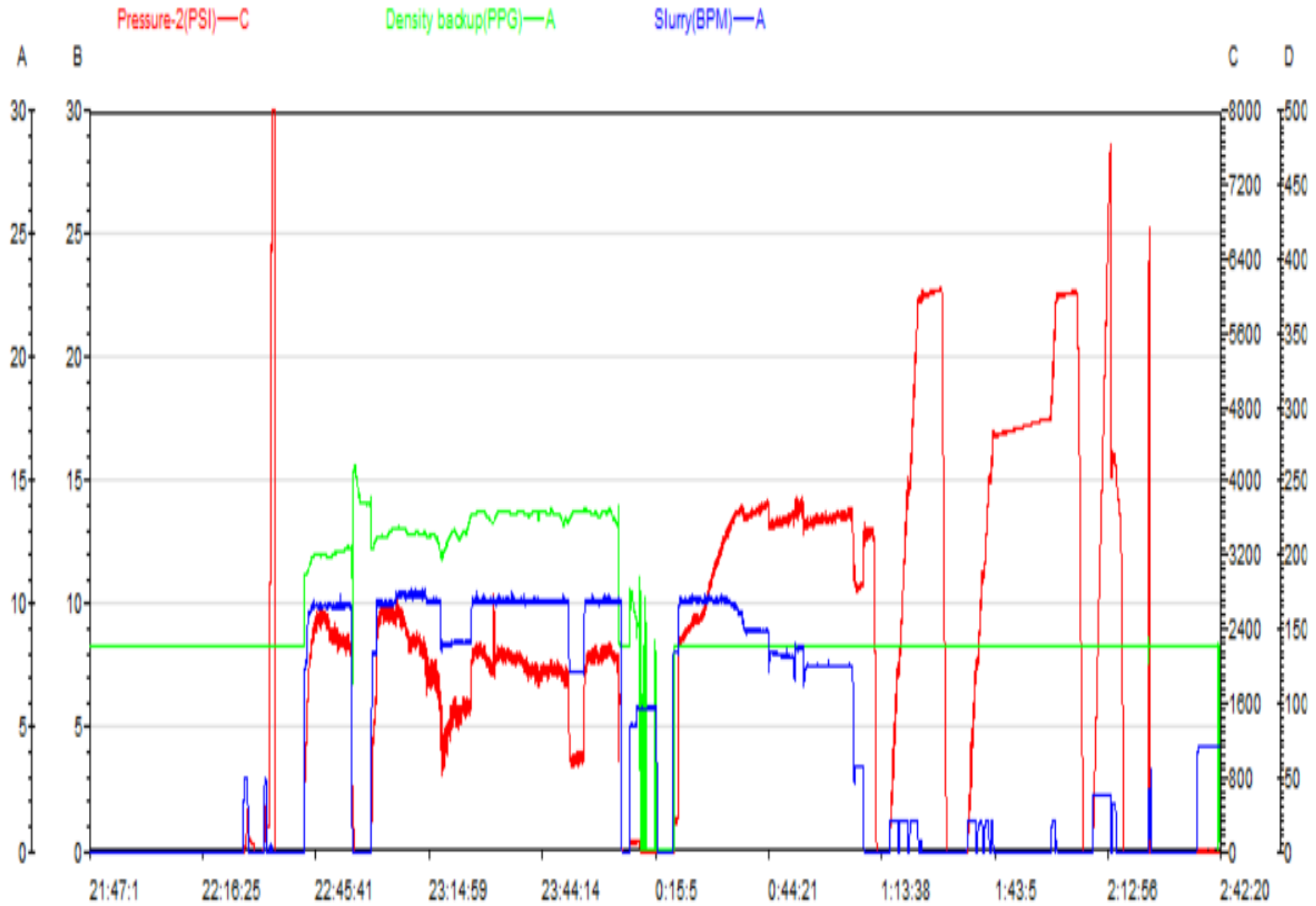
Surfactants (gal)	238
Clay Stabilizer (gal)	
Biocide (gal)	15
Corrosion Inhibitor (gal)	
Defoamer (gal)	60
PhenoSeal (LCM lbs)	
Fiber (LCM lbs)	300

Spacer to Surface?	yes
Spacer volume returned	31
Cement to surface?	no
Cement volume to surface stage 1 (bbls)	Stg 2
Surface top out?	
Top out volume pumped (bbls)	

## Job Treatment Log

Client		Well				Exero Supervisor	
PDC Energy		Everest 08N				Ryan Pfeifer 307-258-1708	
Ambient Conditions ( Temperature / Humidity / Air Pressure )						74 Deg F / 41 % / 25.05 in	
Date DD/MM	Time HH:MM	Density (ppg)	Rate (bpm)	Vol. (bbl)	Total Vol. (bbl)	Pressure (psi)	Treatment Comments
7/13/22	5:00 PM						arrive on location time requested 18:00
	5:05 PM						site assessment and rig up
7/14/22	1:00 AM						pre-job safety meeting
	1:15 AM						rig up floor
	1:19 AM	8.33	3.00	5.0	5.0	500	fill lines
	1:26 AM	8.33				8500	pressure test lines to 8600
	1:33 AM						drop 1st bottom plug
	1:35 AM	12.00	10.00	140.0	140.0	2500	pump spacer @ 12# with surfactants and fiber
	1:52 AM						drop 2nd bottom plug
	1:53 AM	12.90	10.00	257.0	257.0	2300	pump lead cement (1276sks, 1.13 yield, 3.9 gal/sk)
	2:12 AM	13.70	10.00	413.0	413.0	2000	pump tail cement (1665sks, 1.37 yield, 6.63 gal/sk)
	2:58 AM	87.33	10.00	8.0	8.0	1500	pump sugar water
	3:02 AM						shut down
	3:05 AM						wash pumps and lines
	3:10 AM						drop top plug
	3:13 AM	8.33	10.00	10.0	10.0	2300	pump displacement
	3:18 AM	8.33	10.00	50.0	50.0	2500	pump displacement
	3:23 AM	8.33	10.00	100.0	100.0	3000	pump displacement
	3:28 AM	8.33	10.00	150.0	150.0	3600	pump displacement
	3:34 AM	8.33	9.00	200.0	200.0	3700	pump displacement
	3:40 AM	8.33	8.00	250.0	250.0	3500	pump displacement
	3:47 AM	8.33	7.50	300.0	300.0	3500	pump displacement
	3:54 AM	8.33	7.50	350.0	350.0	3600	pump displacement
	4:01 AM	8.33	3.50	413.0	413.0	3000	pump displacement, final circulating pressure 3000, 30 bbls of spacer back to surface
	4:01 AM					3500	bump plug
	4:04 AM						check floats, floats held 5bbls to truck
	4:08 AM					6200	set packer per tool hand
	5:01 AM	8.33	2.00	2.0	2.0	7600	shift sleeve and pump 2bbl wet shoe
	5:09 AM						check floats, floats held 5bbls to truck
	5:20 AM						flush stack
	6:00 AM						rig down and depart location

# Everest 8N Production Pump Chart – Pressure / Rate / Density





## Centralizer Depths

**Well Name: Everest 08N**

**Production, Set Depth: 18,625.0ftKB**

API 05123516680000		Surface Legal Location NWNE 34 6N 66W		Field Name Wattenberg		State CO		Well Configuration Type Horizontal			
Ground Elevation (ft) 4,697.00		Original KB Elevation (ft) 4,725.00		KB-Ground Distance (ft) 28.00		Spud Date 7/10/2022 10:15		Rig Release Date 7/14/2022 07:30		On Production Date Abandon Date	

### Casing Run Tally

Run #	Ref #	Item Des	OD (in)	Wt (lb/ft)	Grade	Run?	Len (ft)	Centralized?	Ext Jwry	Connections	Top (ftKB)	Cum Len (ft)
7	1	Casing Joints	5 1/2	20.00	P-110	Yes	45.81	Yes			18,541.5	83.46
9	3	Casing Joints	5 1/2	20.00	P-110	Yes	45.70	Yes			18,450.0	174.96
11	5	Casing Joints	5 1/2	20.00	P-110	Yes	45.80	Yes			18,358.4	266.56
13	7	Casing Joints	5 1/2	20.00	P-110	Yes	45.85	Yes			18,268.3	356.69
15	9	Casing Joints	5 1/2	20.00	P-110	Yes	44.10	Yes			18,180.2	444.79
17		Marker Joint A	5 1/2	20.00	P-110	Yes	23.56	Yes			18,110.8	514.16
19	12	Casing Joints	5 1/2	20.00	P-110	Yes	43.64	Yes			18,021.2	603.83
21	14	Casing Joints	5 1/2	20.00	P-110	Yes	45.88	Yes			17,930.0	694.96
23	16	Casing Joints	5 1/2	20.00	P-110	Yes	44.12	Yes			17,840.0	784.96
25	18	Casing Joints	5 1/2	20.00	P-110	Yes	45.68	Yes			17,748.9	876.14
27	20	Casing Joints	5 1/2	20.00	P-110	Yes	45.83	Yes			17,657.3	967.70
29	22	Casing Joints	5 1/2	20.00	P-110	Yes	45.74	Yes			17,565.9	1,059.09
31	24	Casing Joints	5 1/2	20.00	P-110	Yes	46.05	Yes			17,474.2	1,150.82
33	26	Casing Joints	5 1/2	20.00	P-110	Yes	45.68	Yes			17,382.9	1,242.15
35	28	Casing Joints	5 1/2	20.00	P-110	Yes	45.70	Yes			17,291.4	1,333.65
37	30	Casing Joints	5 1/2	20.00	P-110	Yes	45.75	Yes			17,199.9	1,425.14
39	32	Casing Joints	5 1/2	20.00	P-110	Yes	45.82	Yes			17,108.1	1,516.88
41	34	Casing Joints	5 1/2	20.00	P-110	Yes	45.80	Yes			17,018.2	1,606.82
43	36	Casing Joints	5 1/2	20.00	P-110	Yes	45.79	Yes			16,926.7	1,698.31
45	38	Casing Joints	5 1/2	20.00	P-110	Yes	45.83	Yes			16,835.0	1,789.96
47	40	Casing Joints	5 1/2	20.00	P-110	Yes	45.81	Yes			16,743.4	1,881.57
49	42	Casing Joints	5 1/2	20.00	P-110	Yes	45.98	Yes			16,656.0	1,969.05
51	44	Casing Joints	5 1/2	20.00	P-110	Yes	41.46	Yes			16,568.6	2,056.43
53	46	Casing Joints	5 1/2	20.00	P-110	Yes	45.80	Yes			16,476.9	2,148.06
55	48	Casing Joints	5 1/2	20.00	P-110	Yes	45.97	Yes			16,385.2	2,239.80
57	50	Casing Joints	5 1/2	20.00	P-110	Yes	45.60	Yes			16,294.0	2,331.03
59	52	Casing Joints	5 1/2	20.00	P-110	Yes	45.03	Yes			16,204.7	2,420.30
61	54	Casing Joints	5 1/2	20.00	P-110	Yes	45.70	Yes			16,113.0	2,512.05
63	56	Casing Joints	5 1/2	20.00	P-110	Yes	46.05	Yes			16,021.2	2,603.81
65	58	Casing Joints	5 1/2	20.00	P-110	Yes	45.91	Yes			15,929.5	2,695.55
67	60	Casing Joints	5 1/2	20.00	P-110	Yes	43.35	Yes			15,840.1	2,784.90



## Centralizer Depths

**Well Name: Everest 08N**

**Production, Set Depth: 18,625.0ftKB**

API 0512351668000		Surface Legal Location NWNE 34 6N 66W		Field Name Wattenberg		State CO		Well Configuration Type Horizontal			
Ground Elevation (ft) 4,697.00	Original KB Elevation (ft) 4,725.00	KB-Ground Distance (ft) 28.00	Spud Date 7/10/2022 10:15	Rig Release Date 7/14/2022 07:30	On Production Date	Abandon Date					

### Casing Run Tally

Run #	Ref #	Item Des	OD (in)	Wt (lb/ft)	Grade	Run?	Len (ft)	Centralized?	Ext Jwry	Connections	Top (ftKB)	Cum Len (ft)
69	62	Casing Joints	5 1/2	20.00	P-110	Yes	46.04	Yes			15,748.1	2,876.86
71	64	Casing Joints	5 1/2	20.00	P-110	Yes	45.84	Yes			15,656.4	2,968.60
73	66	Casing Joints	5 1/2	20.00	P-110	Yes	45.64	Yes			15,564.8	3,060.24
75	68	Casing Joints	5 1/2	20.00	P-110	Yes	46.04	Yes			15,472.7	3,152.33
77	70	Casing Joints	5 1/2	20.00	P-110	Yes	46.08	Yes			15,380.6	3,244.39
79	72	Casing Joints	5 1/2	20.00	P-110	Yes	46.05	Yes			15,288.5	3,336.47
81	74	Casing Joints	5 1/2	20.00	P-110	Yes	44.90	Yes			15,197.9	3,427.12
83	76	Casing Joints	5 1/2	20.00	P-110	Yes	46.05	Yes			15,106.1	3,518.87
85	78	Casing Joints	5 1/2	20.00	P-110	Yes	45.61	Yes			15,014.9	3,610.09
87	80	Casing Joints	5 1/2	20.00	P-110	Yes	45.75	Yes			14,923.4	3,701.61
89	82	Casing Joints	5 1/2	20.00	P-110	Yes	45.68	Yes			14,831.9	3,793.10
91	84	Casing Joints	5 1/2	20.00	P-110	Yes	44.71	Yes			14,743.3	3,881.66
93	86	Casing Joints	5 1/2	20.00	P-110	Yes	45.64	Yes			14,654.0	3,971.02
95	88	Casing Joints	5 1/2	20.00	P-110	Yes	45.75	Yes			14,562.4	4,062.61
97	90	Casing Joints	5 1/2	20.00	P-110	Yes	46.05	Yes			14,470.3	4,154.69
99	92	Casing Joints	5 1/2	20.00	P-110	Yes	45.64	Yes			14,379.7	4,245.34
101	94	Casing Joints	5 1/2	20.00	P-110	Yes	45.68	Yes			14,288.2	4,336.84
103	96	Casing Joints	5 1/2	20.00	P-110	Yes	45.82	Yes			14,196.6	4,428.38
105	98	Casing Joints	5 1/2	20.00	P-110	Yes	46.14	Yes			14,107.3	4,517.74
107	100	Casing Joints	5 1/2	20.00	P-110	Yes	43.25	Yes			14,020.2	4,604.79
109	102	Casing Joints	5 1/2	20.00	P-110	Yes	45.70	Yes			13,928.9	4,696.13
111	104	Casing Joints	5 1/2	20.00	P-110	Yes	44.38	Yes			13,838.7	4,786.35
113	106	Casing Joints	5 1/2	20.00	P-110	Yes	43.65	Yes			13,749.3	4,875.74
115	108	Casing Joints	5 1/2	20.00	P-110	Yes	45.36	Yes			13,658.8	4,966.20
117	109	Casing Joints	5 1/2	20.00	P-110	Yes	46.02	Yes			13,590.7	5,034.31
119	111	Casing Joints	5 1/2	20.00	P-110	Yes	45.53	Yes			13,501.2	5,123.79
121	113	Casing Joints	5 1/2	20.00	P-110	Yes	45.84	Yes			13,409.7	5,215.35
123	115	Casing Joints	5 1/2	20.00	P-110	Yes	45.15	Yes			13,318.7	5,306.31
125	117	Casing Joints	5 1/2	20.00	P-110	Yes	45.78	Yes			13,227.1	5,397.94
127	119	Casing Joints	5 1/2	20.00	P-110	Yes	45.82	Yes			13,135.4	5,489.57
129	121	Casing Joints	5 1/2	20.00	P-110	Yes	45.36	Yes			13,044.3	5,580.68



## Centralizer Depths

**Well Name: Everest 08N**

**Production, Set Depth: 18,625.0ftKB**

API 05123516680000		Surface Legal Location NWNE 34 6N 66W		Field Name Wattenberg		State CO		Well Configuration Type Horizontal			
Ground Elevation (ft) 4,697.00	Original KB Elevation (ft) 4,725.00	KB-Ground Distance (ft) 28.00	Spud Date 7/10/2022 10:15	Rig Release Date 7/14/2022 07:30	On Production Date	Abandon Date					

Casing Run Tally												
Run #	Ref #	Item Des	OD (in)	Wt (lb/ft)	Grade	Run?	Len (ft)	Centralized?	Ext Jwry	Connections	Top (ftKB)	Cum Len (ft)
131	123	Casing Joints	5 1/2	20.00	P-110	Yes	45.65	Yes			12,953.2	5,671.78
133	125	Casing Joints	5 1/2	20.00	P-110	Yes	45.60	Yes			12,863.8	5,761.17
135	127	Casing Joints	5 1/2	20.00	P-110	Yes	45.81	Yes			12,772.2	5,852.83
137	129	Casing Joints	5 1/2	20.00	P-110	Yes	45.83	Yes			12,680.5	5,944.48
139	131	Casing Joints	5 1/2	20.00	P-110	Yes	45.84	Yes			12,589.3	6,035.74
141	133	Casing Joints	5 1/2	20.00	P-110	Yes	45.18	Yes			12,498.3	6,126.74
143	135	Casing Joints	5 1/2	20.00	P-110	Yes	45.83	Yes			12,406.6	6,218.37
145	137	Casing Joints	5 1/2	20.00	P-110	Yes	45.84	Yes			12,315.1	6,309.89
147	139	Casing Joints	5 1/2	20.00	P-110	Yes	45.78	Yes			12,223.2	6,401.77
149	141	Casing Joints	5 1/2	20.00	P-110	Yes	45.62	Yes			12,131.7	6,493.27
151	143	Casing Joints	5 1/2	20.00	P-110	Yes	45.64	Yes			12,040.8	6,584.19
153	145	Casing Joints	5 1/2	20.00	P-110	Yes	45.63	Yes			11,949.2	6,675.82
155	147	Casing Joints	5 1/2	20.00	P-110	Yes	45.80	Yes			11,857.6	6,767.43
157	149	Casing Joints	5 1/2	20.00	P-110	Yes	45.20	Yes			11,766.6	6,858.43
159	151	Casing Joints	5 1/2	20.00	P-110	Yes	40.20	Yes			11,681.2	6,943.85
161	153	Casing Joints	5 1/2	20.00	P-110	Yes	45.67	Yes			11,589.4	7,035.56
163	155	Casing Joints	5 1/2	20.00	P-110	Yes	45.81	Yes			11,497.8	7,127.19
165	157	Casing Joints	5 1/2	20.00	P-110	Yes	43.58	Yes			11,409.7	7,215.32
167	159	Casing Joints	5 1/2	20.00	P-110	Yes	43.53	Yes			11,321.9	7,303.06
169	161	Casing Joints	5 1/2	20.00	P-110	Yes	44.55	Yes			11,233.9	7,391.06
171	163	Casing Joints	5 1/2	20.00	P-110	Yes	45.76	Yes			11,143.4	7,481.57
173	165	Casing Joints	5 1/2	20.00	P-110	Yes	46.07	Yes			11,052.7	7,572.32
175	167	Casing Joints	5 1/2	20.00	P-110	Yes	45.43	Yes			10,961.2	7,663.80
177	169	Casing Joints	5 1/2	20.00	P-110	Yes	45.80	Yes			10,870.0	7,755.02
179	171	Casing Joints	5 1/2	20.00	P-110	Yes	45.74	Yes			10,778.4	7,846.58
181	173	Casing Joints	5 1/2	20.00	P-110	Yes	45.65	Yes			10,687.0	7,937.98
183	175	Casing Joints	5 1/2	20.00	P-110	Yes	45.65	Yes			10,596.8	8,028.23
185	177	Casing Joints	5 1/2	20.00	P-110	Yes	45.55	Yes			10,505.1	8,119.88
187	179	Casing Joints	5 1/2	20.00	P-110	Yes	45.58	Yes			10,413.5	8,211.46
189	181	Casing Joints	5 1/2	20.00	P-110	Yes	40.25	Yes			10,331.4	8,293.57
191	183	Casing Joints	5 1/2	20.00	P-110	Yes	45.12	Yes			10,242.9	8,382.11



## Centralizer Depths

**Well Name: Everest 08N**

**Production, Set Depth: 18,625.0ftKB**

API 05123516680000		Surface Legal Location NWNE 34 6N 66W		Field Name Wattenberg		State CO		Well Configuration Type Horizontal			
Ground Elevation (ft) 4,697.00	Original KB Elevation (ft) 4,725.00	KB-Ground Distance (ft) 28.00	Spud Date 7/10/2022 10:15	Rig Release Date 7/14/2022 07:30	On Production Date	Abandon Date					

### Casing Run Tally

Run #	Ref #	Item Des	OD (in)	Wt (lb/ft)	Grade	Run?	Len (ft)	Centralized?	Ext Jwry	Connections	Top (ftKB)	Cum Len (ft)
193	185	Casing Joints	5 1/2	20.00	P-110	Yes	46.07	Yes			10,150.8	8,474.22
195	187	Casing Joints	5 1/2	20.00	P-110	Yes	44.55	Yes			10,060.5	8,564.55
197	189	Casing Joints	5 1/2	20.00	P-110	Yes	45.68	Yes			9,980.5	8,644.53
199	191	Casing Joints	5 1/2	20.00	P-110	Yes	45.72	Yes			9,888.9	8,736.07
201	193	Casing Joints	5 1/2	20.00	P-110	Yes	45.90	Yes			9,797.4	8,827.61
203	195	Casing Joints	5 1/2	20.00	P-110	Yes	45.74	Yes			9,705.7	8,919.29
205	197	Casing Joints	5 1/2	20.00	P-110	Yes	45.85	Yes			9,614.3	9,010.74
207	199	Casing Joints	5 1/2	20.00	P-110	Yes	45.78	Yes			9,522.4	9,102.59
209	201	Casing Joints	5 1/2	20.00	P-110	Yes	45.68	Yes			9,430.9	9,194.06
211	203	Casing Joints	5 1/2	20.00	P-110	Yes	45.78	Yes			9,343.1	9,281.89
213	205	Casing Joints	5 1/2	20.00	P-110	Yes	45.83	Yes			9,254.6	9,370.40
215	207	Casing Joints	5 1/2	20.00	P-110	Yes	45.50	Yes			9,163.4	9,461.65
217	209	Casing Joints	5 1/2	20.00	P-110	Yes	45.40	Yes			9,072.7	9,552.29
219	211	Casing Joints	5 1/2	20.00	P-110	Yes	45.74	Yes			8,983.7	9,641.28
221	213	Casing Joints	5 1/2	20.00	P-110	Yes	45.65	Yes			8,892.4	9,732.63
223	215	Casing Joints	5 1/2	20.00	P-110	Yes	45.64	Yes			8,801.0	9,824.03
225	217	Casing Joints	5 1/2	20.00	P-110	Yes	44.63	Yes			8,712.2	9,912.78
227		Marker Joint G	5 1/2	20.00	P-110	Yes	11.72	Yes			8,654.9	9,970.10
228	219	Casing Joints	5 1/2	20.00	P-110	Yes	44.60	Yes			8,610.3	10,014.70
229	220	Casing Joints	5 1/2	20.00	P-110	Yes	45.75	Yes			8,564.6	10,060.45
230	221	Casing Joints	5 1/2	20.00	P-110	Yes	45.84	Yes			8,518.7	10,106.29
231	222	Casing Joints	5 1/2	20.00	P-110	Yes	44.58	Yes			8,474.1	10,150.87
232	223	Casing Joints	5 1/2	20.00	P-110	Yes	44.98	Yes			8,429.2	10,195.85
233	224	Casing Joints	5 1/2	20.00	P-110	Yes	44.35	Yes			8,384.8	10,240.20
234	225	Casing Joints	5 1/2	20.00	P-110	Yes	44.96	Yes			8,339.8	10,285.16
235	226	Casing Joints	5 1/2	20.00	P-110	Yes	44.12	Yes			8,295.7	10,329.28
236	227	Casing Joints	5 1/2	20.00	P-110	Yes	45.74	Yes			8,250.0	10,375.02
237	228	Casing Joints	5 1/2	20.00	P-110	Yes	44.97	Yes			8,205.0	10,419.99
238	229	Casing Joints	5 1/2	20.00	P-110	Yes	44.47	Yes			8,160.5	10,464.46
239	230	Casing Joints	5 1/2	20.00	P-110	Yes	45.35	Yes			8,115.2	10,509.81
240	231	Casing Joints	5 1/2	20.00	P-110	Yes	42.35	Yes			8,072.8	10,552.16



## Centralizer Depths

**Well Name: Everest 08N**

**Production, Set Depth: 18,625.0ftKB**

API 05123516680000		Surface Legal Location NWNE 34 6N 66W		Field Name Wattenberg		State CO		Well Configuration Type Horizontal			
Ground Elevation (ft) 4,697.00	Original KB Elevation (ft) 4,725.00	KB-Ground Distance (ft) 28.00	Spud Date 7/10/2022 10:15	Rig Release Date 7/14/2022 07:30	On Production Date	Abandon Date					

### Casing Run Tally

Run #	Ref #	Item Des	OD (in)	Wt (lb/ft)	Grade	Run?	Len (ft)	Centralized?	Ext Jwry	Connections	Top (ftKB)	Cum Len (ft)
241	232	Casing Joints	5 1/2	20.00	P-110	Yes	44.98	Yes			8,027.9	10,597.14
242	233	Casing Joints	5 1/2	20.00	P-110	Yes	45.97	Yes			7,981.9	10,643.11
243	234	Casing Joints	5 1/2	20.00	P-110	Yes	45.77	Yes			7,936.1	10,688.88
244	235	Casing Joints	5 1/2	20.00	P-110	Yes	38.58	Yes			7,897.5	10,727.46
245	236	Casing Joints	5 1/2	20.00	P-110	Yes	44.50	Yes			7,853.0	10,771.96
246	237	Casing Joints	5 1/2	20.00	P-110	Yes	45.78	Yes			7,807.3	10,817.74
247	238	Casing Joints	5 1/2	20.00	P-110	Yes	44.75	Yes			7,762.5	10,862.49
248	239	Casing Joints	5 1/2	20.00	P-110	Yes	42.53	Yes			7,720.0	10,905.02
249	240	Casing Joints	5 1/2	20.00	P-110	Yes	44.41	Yes			7,675.6	10,949.43
250	241	Casing Joints	5 1/2	20.00	P-110	Yes	45.85	Yes			7,629.7	10,995.28
251	242	Casing Joints	5 1/2	20.00	P-110	Yes	45.70	Yes			7,584.0	11,040.98
252	243	Casing Joints	5 1/2	20.00	P-110	Yes	44.35	Yes			7,539.7	11,085.33
253	244	Casing Joints	5 1/2	20.00	P-110	Yes	41.25	Yes			7,498.4	11,126.58
254	245	Casing Joints	5 1/2	20.00	P-110	Yes	45.62	Yes			7,452.8	11,172.20
255	246	Casing Joints	5 1/2	20.00	P-110	Yes	45.25	Yes			7,407.6	11,217.45
256		Marker Joint H	5 1/2	20.00	P-110	Yes	10.51	Yes			7,397.0	11,227.96
257	247	Casing Joints	5 1/2	20.00	P-110	Yes	44.78	Yes			7,352.3	11,272.74
258	248	Casing Joints	5 1/2	20.00	P-110	Yes	46.03	Yes			7,306.2	11,318.77
259	249	Casing Joints	5 1/2	20.00	P-110	Yes	43.98	Yes			7,262.3	11,362.75
260	250	Casing Joints	5 1/2	20.00	P-110	Yes	45.34	Yes			7,216.9	11,408.09
261	251	Casing Joints	5 1/2	20.00	P-110	Yes	45.62	Yes			7,171.3	11,453.71
262	252	Casing Joints	5 1/2	20.00	P-110	Yes	45.91	Yes			7,125.4	11,499.62
263	253	Casing Joints	5 1/2	20.00	P-110	Yes	46.04	Yes			7,079.3	11,545.66
264	254	Casing Joints	5 1/2	20.00	P-110	Yes	45.38	Yes			7,034.0	11,591.04
265	255	Casing Joints	5 1/2	20.00	P-110	Yes	43.84	Yes			6,990.1	11,634.88
266	256	Casing Joints	5 1/2	20.00	P-110	Yes	45.03	Yes			6,945.1	11,679.91
267	257	Casing Joints	5 1/2	20.00	P-110	Yes	45.64	Yes			6,899.5	11,725.55
268	258	Casing Joints	5 1/2	20.00	P-110	Yes	42.98	Yes			6,856.5	11,768.53
269	259	Casing Joints	5 1/2	20.00	P-110	Yes	44.50	Yes			6,812.0	11,813.03
270	260	Casing Joints	5 1/2	20.00	P-110	Yes	44.50	Yes			6,767.5	11,857.53
271	261	Casing Joints	5 1/2	20.00	P-110	Yes	44.90	Yes			6,722.6	11,902.43



## Centralizer Depths

**Well Name: Everest 08N**

**Production, Set Depth: 18,625.0ftKB**

API 05123516680000		Surface Legal Location NWNE 34 6N 66W		Field Name Wattenberg		State CO		Well Configuration Type Horizontal			
Ground Elevation (ft) 4,697.00	Original KB Elevation (ft) 4,725.00	KB-Ground Distance (ft) 28.00	Spud Date 7/10/2022 10:15	Rig Release Date 7/14/2022 07:30	On Production Date	Abandon Date					

### Casing Run Tally

Run #	Ref #	Item Des	OD (in)	Wt (lb/ft)	Grade	Run?	Len (ft)	Centralized?	Ext Jwry	Connections	Top (ftKB)	Cum Len (ft)
272	262	Casing Joints	5 1/2	20.00	P-110	Yes	45.89	Yes			6,676.7	11,948.32
273	263	Casing Joints	5 1/2	20.00	P-110	Yes	44.62	Yes			6,632.1	11,992.94
274	264	Casing Joints	5 1/2	20.00	P-110	Yes	35.98	Yes			6,596.1	12,028.92
275	265	Casing Joints	5 1/2	20.00	P-110	Yes	44.63	Yes			6,551.5	12,073.55
276	266	Casing Joints	5 1/2	20.00	P-110	Yes	45.88	Yes			6,505.6	12,119.43
277	267	Casing Joints	5 1/2	20.00	P-110	Yes	44.28	Yes			6,461.3	12,163.71
278	268	Casing Joints	5 1/2	20.00	P-110	Yes	46.20	Yes			6,415.1	12,209.91
279	269	Casing Joints	5 1/2	20.00	P-110	Yes	37.54	Yes			6,377.6	12,247.45
280	270	Casing Joints	5 1/2	20.00	P-110	Yes	46.02	Yes			6,331.5	12,293.47
281	271	Casing Joints	5 1/2	20.00	P-110	Yes	45.60	Yes			6,285.9	12,339.07
282	272	Casing Joints	5 1/2	20.00	P-110	Yes	45.95	Yes			6,240.0	12,385.02
283	273	Casing Joints	5 1/2	20.00	P-110	Yes	45.10	Yes			6,194.9	12,430.12
284	274	Casing Joints	5 1/2	20.00	P-110	Yes	43.63	Yes			6,151.3	12,473.75
285	275	Casing Joints	5 1/2	20.00	P-110	Yes	44.68	Yes			6,106.6	12,518.43
286	276	Casing Joints	5 1/2	20.00	P-110	Yes	45.45	Yes			6,061.1	12,563.88
287	277	Casing Joints	5 1/2	20.00	P-110	Yes	43.84	Yes			6,017.3	12,607.72
288	278	Casing Joints	5 1/2	20.00	P-110	Yes	40.06	Yes			5,977.2	12,647.78
289	279	Casing Joints	5 1/2	20.00	P-110	Yes	44.01	Yes			5,933.2	12,691.79
290	280	Casing Joints	5 1/2	20.00	P-110	Yes	40.34	Yes			5,892.9	12,732.13
291	281	Casing Joints	5 1/2	20.00	P-110	Yes	45.75	Yes			5,847.1	12,777.88
292	282	Casing Joints	5 1/2	20.00	P-110	Yes	45.08	Yes			5,802.0	12,822.96
293	283	Casing Joints	5 1/2	20.00	P-110	Yes	45.21	Yes			5,756.8	12,868.17
294	284	Casing Joints	5 1/2	20.00	P-110	Yes	45.60	Yes			5,711.2	12,913.77
295	285	Casing Joints	5 1/2	20.00	P-110	Yes	42.88	Yes			5,668.4	12,956.65
296	286	Casing Joints	5 1/2	20.00	P-110	Yes	40.21	Yes			5,628.1	12,996.86
297	287	Casing Joints	5 1/2	20.00	P-110	Yes	40.14	Yes			5,588.0	13,037.00
298	288	Casing Joints	5 1/2	20.00	P-110	Yes	45.91	Yes			5,542.1	13,082.91
299	289	Casing Joints	5 1/2	20.00	P-110	Yes	45.74	Yes			5,496.4	13,128.65
300	290	Casing Joints	5 1/2	20.00	P-110	Yes	43.52	Yes			5,452.8	13,172.17
301	291	Casing Joints	5 1/2	20.00	P-110	Yes	45.75	Yes			5,407.1	13,217.92
302	292	Casing Joints	5 1/2	20.00	P-110	Yes	38.87	Yes			5,368.2	13,256.79



## Centralizer Depths

**Well Name: Everest 08N**

**Production, Set Depth: 18,625.0ftKB**

API 05123516680000		Surface Legal Location NWNE 34 6N 66W		Field Name Wattenberg		State CO		Well Configuration Type Horizontal			
Ground Elevation (ft) 4,697.00	Original KB Elevation (ft) 4,725.00	KB-Ground Distance (ft) 28.00	Spud Date 7/10/2022 10:15	Rig Release Date 7/14/2022 07:30	On Production Date	Abandon Date					

### Casing Run Tally

Run #	Ref #	Item Des	OD (in)	Wt (lb/ft)	Grade	Run?	Len (ft)	Centralized?	Ext Jwry	Connections	Top (ftKB)	Cum Len (ft)
303	293	Casing Joints	5 1/2	20.00	P-110	Yes	45.97	Yes			5,322.2	13,302.76
304	294	Casing Joints	5 1/2	20.00	P-110	Yes	44.78	Yes			5,277.5	13,347.54
305	295	Casing Joints	5 1/2	20.00	P-110	Yes	44.14	Yes			5,233.3	13,391.68
306	296	Casing Joints	5 1/2	20.00	P-110	Yes	43.46	Yes			5,189.9	13,435.14
307	297	Casing Joints	5 1/2	20.00	P-110	Yes	44.70	Yes			5,145.2	13,479.84
308	298	Casing Joints	5 1/2	20.00	P-110	Yes	43.14	Yes			5,102.0	13,522.98
309	299	Casing Joints	5 1/2	20.00	P-110	Yes	45.90	Yes			5,056.1	13,568.88
310	300	Casing Joints	5 1/2	20.00	P-110	Yes	45.75	Yes			5,010.4	13,614.63
311	301	Casing Joints	5 1/2	20.00	P-110	Yes	43.80	Yes			4,966.6	13,658.43
312	302	Casing Joints	5 1/2	20.00	P-110	Yes	45.60	Yes			4,921.0	13,704.03
313	303	Casing Joints	5 1/2	20.00	P-110	Yes	40.29	Yes			4,880.7	13,744.32
314	304	Casing Joints	5 1/2	20.00	P-110	Yes	43.08	Yes			4,837.6	13,787.40
315	305	Casing Joints	5 1/2	20.00	P-110	Yes	44.41	Yes			4,793.2	13,831.81
316	306	Casing Joints	5 1/2	20.00	P-110	Yes	45.67	Yes			4,747.5	13,877.48
317	307	Casing Joints	5 1/2	20.00	P-110	Yes	44.04	Yes			4,703.5	13,921.52
318	308	Casing Joints	5 1/2	20.00	P-110	Yes	45.47	Yes			4,658.0	13,966.99
319	309	Casing Joints	5 1/2	20.00	P-110	Yes	43.95	Yes			4,614.1	14,010.94
320	310	Casing Joints	5 1/2	20.00	P-110	Yes	45.48	Yes			4,568.6	14,056.42
321	311	Casing Joints	5 1/2	20.00	P-110	Yes	43.53	Yes			4,525.1	14,099.95
322	312	Casing Joints	5 1/2	20.00	P-110	Yes	45.78	Yes			4,479.3	14,145.73
323	313	Casing Joints	5 1/2	20.00	P-110	Yes	43.64	Yes			4,435.6	14,189.37
324	314	Casing Joints	5 1/2	20.00	P-110	Yes	46.05	Yes			4,389.6	14,235.42
325	315	Casing Joints	5 1/2	20.00	P-110	Yes	45.68	Yes			4,343.9	14,281.10
326	316	Casing Joints	5 1/2	20.00	P-110	Yes	43.51	Yes			4,300.4	14,324.61
327	317	Casing Joints	5 1/2	20.00	P-110	Yes	44.95	Yes			4,255.4	14,369.56
328	318	Casing Joints	5 1/2	20.00	P-110	Yes	44.88	Yes			4,210.6	14,414.44
329	319	Casing Joints	5 1/2	20.00	P-110	Yes	44.82	Yes			4,165.7	14,459.26
330	320	Casing Joints	5 1/2	20.00	P-110	Yes	44.95	Yes			4,120.8	14,504.21
331	321	Casing Joints	5 1/2	20.00	P-110	Yes	44.85	Yes			4,075.9	14,549.06
332	322	Casing Joints	5 1/2	20.00	P-110	Yes	45.50	Yes			4,030.4	14,594.56
333	323	Casing Joints	5 1/2	20.00	P-110	Yes	42.35	Yes			3,988.1	14,636.91



## Centralizer Depths

**Well Name: Everest 08N**

**Production, Set Depth: 18,625.0ftKB**

API 05123516680000		Surface Legal Location NWNE 34 6N 66W		Field Name Wattenberg		State CO		Well Configuration Type Horizontal			
Ground Elevation (ft) 4,697.00	Original KB Elevation (ft) 4,725.00	KB-Ground Distance (ft) 28.00	Spud Date 7/10/2022 10:15	Rig Release Date 7/14/2022 07:30	On Production Date	Abandon Date					

### Casing Run Tally

Run #	Ref #	Item Des	OD (in)	Wt (lb/ft)	Grade	Run?	Len (ft)	Centralized?	Ext Jwry	Connections	Top (ftKB)	Cum Len (ft)
334	324	Casing Joints	5 1/2	20.00	P-110	Yes	43.35	Yes			3,944.7	14,680.26
335	325	Casing Joints	5 1/2	20.00	P-110	Yes	45.81	Yes			3,898.9	14,726.07
336	326	Casing Joints	5 1/2	20.00	P-110	Yes	45.95	Yes			3,853.0	14,772.02
337	327	Casing Joints	5 1/2	20.00	P-110	Yes	45.84	Yes			3,807.1	14,817.86
338	328	Casing Joints	5 1/2	20.00	P-110	Yes	45.42	Yes			3,761.7	14,863.28
339	329	Casing Joints	5 1/2	20.00	P-110	Yes	45.74	Yes			3,716.0	14,909.02
340	330	Casing Joints	5 1/2	20.00	P-110	Yes	45.85	Yes			3,670.1	14,954.87
341	331	Casing Joints	5 1/2	20.00	P-110	Yes	45.60	Yes			3,624.5	15,000.47
342	332	Casing Joints	5 1/2	20.00	P-110	Yes	45.72	Yes			3,578.8	15,046.19
343	333	Casing Joints	5 1/2	20.00	P-110	Yes	45.61	Yes			3,533.2	15,091.80
344	334	Casing Joints	5 1/2	20.00	P-110	Yes	45.80	Yes			3,487.4	15,137.60
346	335	Casing Joints	5 1/2	20.00	P-110	Yes	43.91	Yes			3,427.8	15,197.19
347	336	Casing Joints	5 1/2	20.00	P-110	Yes	45.60	Yes			3,382.2	15,242.79
348	337	Casing Joints	5 1/2	20.00	P-110	Yes	44.82	Yes			3,337.4	15,287.61
349	338	Casing Joints	5 1/2	20.00	P-110	Yes	45.74	Yes			3,291.7	15,333.35
350	339	Casing Joints	5 1/2	20.00	P-110	Yes	45.74	Yes			3,245.9	15,379.09
351	340	Casing Joints	5 1/2	20.00	P-110	Yes	45.41	Yes			3,200.5	15,424.50
352	341	Casing Joints	5 1/2	20.00	P-110	Yes	44.84	Yes			3,155.7	15,469.34
353	342	Casing Joints	5 1/2	20.00	P-110	Yes	45.62	Yes			3,110.0	15,514.96
354	343	Casing Joints	5 1/2	20.00	P-110	Yes	44.58	Yes			3,065.5	15,559.54
355	344	Casing Joints	5 1/2	20.00	P-110	Yes	45.62	Yes			3,019.8	15,605.16
356	345	Casing Joints	5 1/2	20.00	P-110	Yes	45.47	Yes			2,974.4	15,650.63
357	346	Casing Joints	5 1/2	20.00	P-110	Yes	37.32	Yes			2,937.1	15,687.95
358	347	Casing Joints	5 1/2	20.00	P-110	Yes	44.96	Yes			2,892.1	15,732.91
359	348	Casing Joints	5 1/2	20.00	P-110	Yes	42.59	Yes			2,849.5	15,775.50
360	349	Casing Joints	5 1/2	20.00	P-110	Yes	44.22	Yes			2,805.3	15,819.72
361	350	Casing Joints	5 1/2	20.00	P-110	Yes	44.95	Yes			2,760.3	15,864.67
362	351	Casing Joints	5 1/2	20.00	P-110	Yes	45.32	Yes			2,715.0	15,909.99
363	352	Casing Joints	5 1/2	20.00	P-110	Yes	44.91	Yes			2,670.1	15,954.90
364	353	Casing Joints	5 1/2	20.00	P-110	Yes	45.64	Yes			2,624.5	16,000.54
365	354	Casing Joints	5 1/2	20.00	P-110	Yes	45.73	Yes			2,578.7	16,046.27



## Centralizer Depths

**Well Name: Everest 08N**

**Production, Set Depth: 18,625.0ftKB**

API 05123516680000		Surface Legal Location NWNE 34 6N 66W		Field Name Wattenberg		State CO		Well Configuration Type Horizontal			
Ground Elevation (ft) 4,697.00	Original KB Elevation (ft) 4,725.00	KB-Ground Distance (ft) 28.00	Spud Date 7/10/2022 10:15	Rig Release Date 7/14/2022 07:30	On Production Date	Abandon Date					

### Casing Run Tally

Run #	Ref #	Item Des	OD (in)	Wt (lb/ft)	Grade	Run?	Len (ft)	Centralized?	Ext Jwry	Connections	Top (ftKB)	Cum Len (ft)
366	355	Casing Joints	5 1/2	20.00	P-110	Yes	45.66	Yes			2,533.1	16,091.93
367	356	Casing Joints	5 1/2	20.00	P-110	Yes	45.38	Yes			2,487.7	16,137.31
368	357	Casing Joints	5 1/2	20.00	P-110	Yes	43.08	Yes			2,444.6	16,180.39
369	358	Casing Joints	5 1/2	20.00	P-110	Yes	45.65	Yes			2,399.0	16,226.04
370	359	Casing Joints	5 1/2	20.00	P-110	Yes	44.14	Yes			2,354.8	16,270.18
371	360	Casing Joints	5 1/2	20.00	P-110	Yes	44.86	Yes			2,310.0	16,315.04
372	361	Casing Joints	5 1/2	20.00	P-110	Yes	45.10	Yes			2,264.9	16,360.14
373	362	Casing Joints	5 1/2	20.00	P-110	Yes	44.92	Yes			2,219.9	16,405.06
374	363	Casing Joints	5 1/2	20.00	P-110	Yes	40.51	Yes			2,179.4	16,445.57
375	364	Casing Joints	5 1/2	20.00	P-110	Yes	43.36	Yes			2,136.1	16,488.93
376	365	Casing Joints	5 1/2	20.00	P-110	Yes	45.74	Yes			2,090.3	16,534.67
377	366	Casing Joints	5 1/2	20.00	P-110	Yes	45.42	Yes			2,044.9	16,580.09
378	367	Casing Joints	5 1/2	20.00	P-110	Yes	44.75	Yes			2,000.2	16,624.84
379	368	Casing Joints	5 1/2	20.00	P-110	Yes	45.92	Yes			1,954.2	16,670.76
380	369	Casing Joints	5 1/2	20.00	P-110	Yes	43.40	Yes			1,910.8	16,714.16
381	370	Casing Joints	5 1/2	20.00	P-110	Yes	45.06	Yes			1,865.8	16,759.22
382	371	Casing Joints	5 1/2	20.00	P-110	Yes	46.16	Yes			1,819.6	16,805.38
383	372	Casing Joints	5 1/2	20.00	P-110	Yes	42.48	Yes			1,777.1	16,847.86
384	373	Casing Joints	5 1/2	20.00	P-110	Yes	45.70	Yes			1,731.4	16,893.56
385	374	Casing Joints	5 1/2	20.00	P-110	Yes	45.76	Yes			1,685.7	16,939.32
386	375	Casing Joints	5 1/2	20.00	P-110	Yes	46.05	Yes			1,639.6	16,985.37
387	376	Casing Joints	5 1/2	20.00	P-110	Yes	44.55	Yes			1,595.1	17,029.92
388	377	Casing Joints	5 1/2	20.00	P-110	Yes	45.66	Yes			1,549.4	17,075.58
389	378	Casing Joints	5 1/2	20.00	P-110	Yes	37.93	Yes			1,511.5	17,113.51
390	379	Casing Joints	5 1/2	20.00	P-110	Yes	45.69	Yes			1,465.8	17,159.20
391	380	Casing Joints	5 1/2	20.00	P-110	Yes	43.56	Yes			1,422.2	17,202.76
392	381	Casing Joints	5 1/2	20.00	P-110	Yes	45.68	Yes			1,376.6	17,248.44
393	382	Casing Joints	5 1/2	20.00	P-110	Yes	46.08	Yes			1,330.5	17,294.52
394	383	Casing Joints	5 1/2	20.00	P-110	Yes	44.20	Yes			1,286.3	17,338.72
395	384	Casing Joints	5 1/2	20.00	P-110	Yes	45.56	Yes			1,240.7	17,384.28
396	385	Casing Joints	5 1/2	20.00	P-110	Yes	45.71	Yes			1,195.0	17,429.99



## Centralizer Depths

**Well Name: Everest 08N**

**Production, Set Depth: 18,625.0ftKB**

API 05123516680000		Surface Legal Location NWNE 34 6N 66W		Field Name Wattenberg		State CO		Well Configuration Type Horizontal			
Ground Elevation (ft) 4,697.00	Original KB Elevation (ft) 4,725.00	KB-Ground Distance (ft) 28.00	Spud Date 7/10/2022 10:15	Rig Release Date 7/14/2022 07:30	On Production Date	Abandon Date					

Casing Run Tally												
Run #	Ref #	Item Des	OD (in)	Wt (lb/ft)	Grade	Run?	Len (ft)	Centralized?	Ext Jwry	Connections	Top (ftKB)	Cum Len (ft)
397	386	Casing Joints	5 1/2	20.00	P-110	Yes	45.64	Yes			1,149.4	17,475.63
398	387	Casing Joints	5 1/2	20.00	P-110	Yes	45.64	Yes			1,103.7	17,521.27
399	388	Casing Joints	5 1/2	20.00	P-110	Yes	46.08	Yes			1,057.7	17,567.35
400	389	Casing Joints	5 1/2	20.00	P-110	Yes	45.34	Yes			1,012.3	17,612.69
401	390	Casing Joints	5 1/2	20.00	P-110	Yes	34.15	Yes			978.2	17,646.84
402	391	Casing Joints	5 1/2	20.00	P-110	Yes	46.16	Yes			932.0	17,693.00
403	392	Casing Joints	5 1/2	20.00	P-110	Yes	44.22	Yes			887.8	17,737.22
404	393	Casing Joints	5 1/2	20.00	P-110	Yes	45.44	Yes			842.3	17,782.66
405	394	Casing Joints	5 1/2	20.00	P-110	Yes	45.85	Yes			796.5	17,828.51
406	395	Casing Joints	5 1/2	20.00	P-110	Yes	45.30	Yes			751.2	17,873.81
407	396	Casing Joints	5 1/2	20.00	P-110	Yes	45.65	Yes			705.5	17,919.46
408	397	Casing Joints	5 1/2	20.00	P-110	Yes	43.95	Yes			661.6	17,963.41
409	398	Casing Joints	5 1/2	20.00	P-110	Yes	44.18	Yes			617.4	18,007.59
410	399	Casing Joints	5 1/2	20.00	P-110	Yes	45.10	Yes			572.3	18,052.69
411	400	Casing Joints	5 1/2	20.00	P-110	Yes	46.00	Yes			526.3	18,098.69