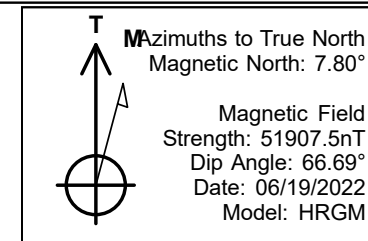


PDC Energy Inc. DJ Basin



Everest 03N
 Everest 6N66W34 1-11
 North American Datum 1983 , US State Plane 1983, Colorado Northern Zone
 Ground Elevation: 4697.0
 +N/-S +E/-W Northing Easting Longitude Slot
 0.0 0.0 1407745.71 3204888.37 40.450329 -104.763787
 Ensign 142 - RKB 28' WELL @ 4725.0ft (Ensign 142 - RKB 28')

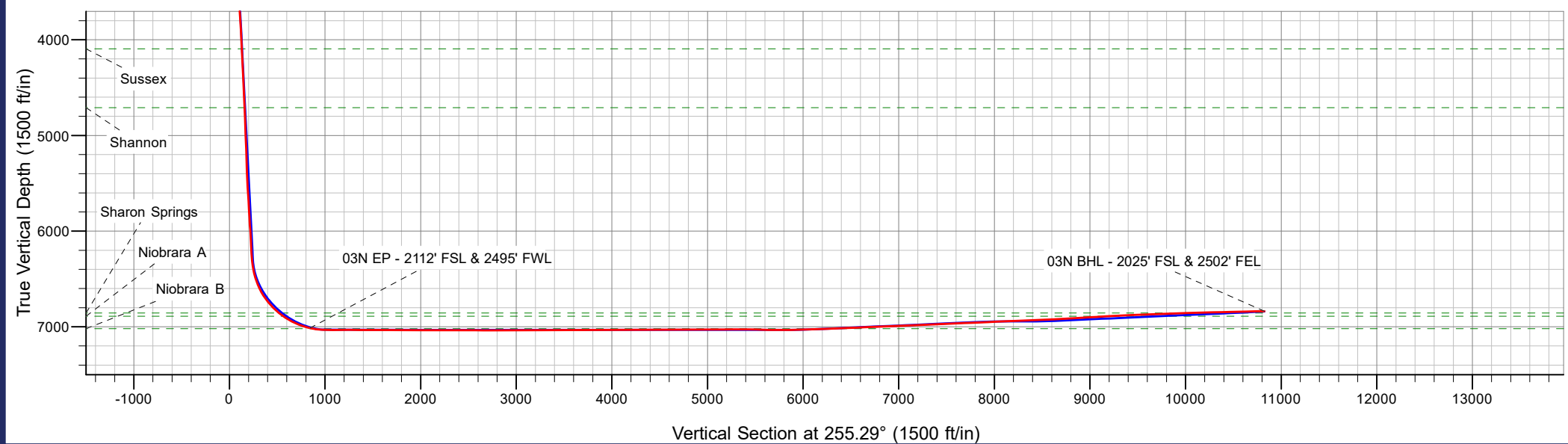
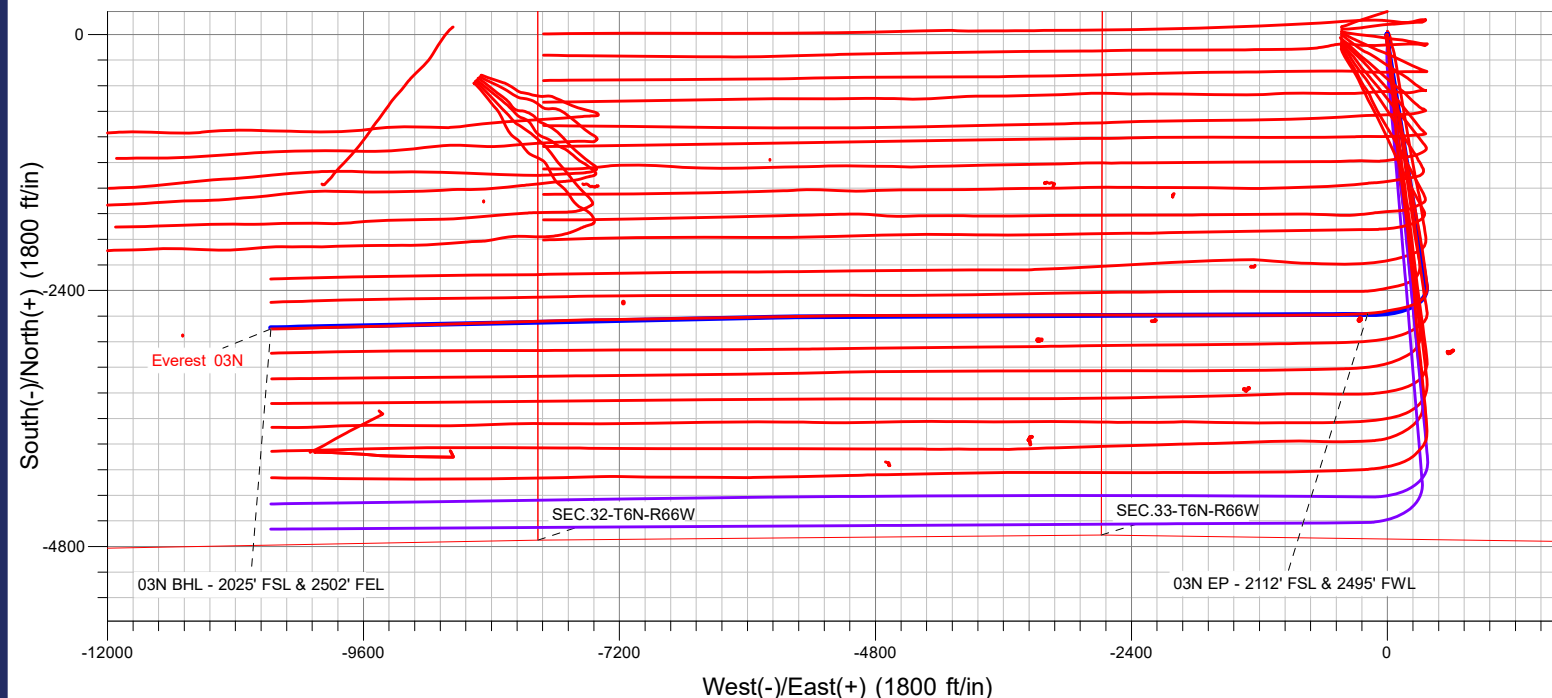
Everest 6N66W34 1-11
 Everest 03N
 Everest 03N Final Surveys
 13:47, July 29 2022



ANNOTATIONS

MD	TVD	Annotation
7875.4	7012.7	03N EP - 2112' FSL & 2495' FWL
18166.0	6836.2	03N BHL - 2025' FSL & 2502' FEL

FINAL SURVEY
Projected Bottom Hole Location
18166' MD / 6836.2' TVD
91.15 INC / 268.64° AZM
2025' FSL / 2502' FEL





PDC Energy Inc. DJ Basin

Sec.34-T6N-R66W

Everest 6N66W34 1-11

Everest 03N

Everest 03N Wellbore #1

Design: Everest 03N Final Surveys

Standard Survey Report

29 July, 2022

Company:	PDC Energy Inc. DJ Basin	Local Co-ordinate Reference:	Well Everest 03N
Project:	Sec.34-T6N-R66W	TVD Reference:	WELL @ 4725.0ft (Ensign 142 - RKB 28')
Site:	Everest 6N66W34 1-11	MD Reference:	WELL @ 4725.0ft (Ensign 142 - RKB 28')
Well:	Everest 03N	North Reference:	True
Wellbore:	Everest 03N Wellbore #1	Survey Calculation Method:	Minimum Curvature
Design:	Everest 03N Final Surveys	Database:	US_EDM

Project	Sec.34-T6N-R66W, Adams County, CO		
Map System:	US State Plane 1983	System Datum:	Mean Sea Level
Geo Datum:	North American Datum 1983		
Map Zone:	Colorado Northern Zone		Using geodetic scale factor

Site	Everest 6N66W34 1-11				
Site Position:		Northing:	1,407,775.60 usft	Latitude:	40.450411
From:	Lat/Long	Easting:	3,204,888.40 usft	Longitude:	-104.763786
Position Uncertainty:	0.0 ft	Slot Radius:	13-3/16 "	Grid Convergence:	0.48 °

Well	Everest 03N					
Well Position	+N/-S	0.0 ft	Northing:	1,407,745.71 usft	Latitude:	40.450329
	+E/-W	0.0 ft	Easting:	3,204,888.37 usft	Longitude:	-104.763787
Position Uncertainty		0.0 ft	Wellhead Elevation:	ft	Ground Level:	4,697.0 ft

Wellbore	Everest 03N Wellbore #1				
Magnetics	Model Name	Sample Date	Declination (°)	Dip Angle (°)	Field Strength (nT)
	HRGM	06/19/2022	7.80	66.69	51,907.52133553

Design	Everest 03N Final Surveys				
Audit Notes:					
Version:	1.0	Phase:	ACTUAL	Tie On Depth:	0.0
Vertical Section:	Depth From (TVD) (ft)	+N/-S (ft)	+E/-W (ft)	Direction (°)	
	0.0	0.0	0.0	255.29	

Survey Program	Date 07/29/2022			
From (ft)	To (ft)	Survey (Wellbore)	Tool Name	Description
69.0	18,166.0	Survey #1 (Everest 03N Wellbore #1)	MWD	MWD - Standard

Survey	Fox Hills Aq Base									
Measured Depth (ft)	Inclination (°)	Azimuth (°)	Vertical Depth (ft)	+N/-S (ft)	+E/-W (ft)	Vertical Section (ft)	Dogleg Rate (°/100usft)	Build Rate (°/100usft)	Turn Rate (°/100usft)	
0.0	0.00	0.00	0.0	0.0	0.0	0.0	0.00	0.00	0.00	
69.0	0.26	234.06	69.0	-0.1	-0.1	0.1	0.38	0.38	0.00	
161.0	0.35	246.19	161.0	-0.3	-0.6	0.6	0.12	0.10	13.18	
252.0	0.53	224.57	252.0	-0.7	-1.1	1.3	0.27	0.20	-23.76	
344.0	0.62	203.65	344.0	-1.5	-1.6	1.9	0.25	0.10	-22.74	
463.0	0.79	204.53	463.0	-2.8	-2.2	2.8	0.14	0.14	0.74	
548.0	1.06	271.33	548.0	-3.3	-3.2	4.0	1.23	0.32	78.59	
636.0	0.88	339.71	636.0	-2.7	-4.3	4.8	1.25	-0.20	77.70	
721.0	1.06	347.26	721.0	-1.3	-4.7	4.9	0.26	0.21	8.88	
748.1	1.21	353.33	748.0	-0.8	-4.8	4.8	0.71	0.56	22.44	

Company:	PDC Energy Inc. DJ Basin	Local Co-ordinate Reference:	Well Everest 03N
Project:	Sec.34-T6N-R66W	TVD Reference:	WELL @ 4725.0ft (Ensign 142 - RKB 28')
Site:	Everest 6N66W34 1-11	MD Reference:	WELL @ 4725.0ft (Ensign 142 - RKB 28')
Well:	Everest 03N	North Reference:	True
Wellbore:	Everest 03N Wellbore #1	Survey Calculation Method:	Minimum Curvature
Design:	Everest 03N Final Surveys	Database:	US_EDM

Survey									
Measured Depth (ft)	Inclination (°)	Azimuth (°)	Vertical Depth (ft)	+N/-S (ft)	+E/-W (ft)	Vertical Section (ft)	Dogleg Rate (°/100usft)	Build Rate (°/100usft)	Turn Rate (°/100usft)
808.0	1.58	2.38	807.9	0.7	-4.8	4.5	0.71	0.61	15.09
893.0	0.35	226.50	892.9	1.7	-4.9	4.4	2.17	-1.45	-159.86
981.0	2.46	191.87	980.9	-0.4	-5.5	5.4	2.48	2.40	-39.35
1,068.0	4.31	182.03	1,067.7	-5.5	-6.0	7.2	2.22	2.13	-11.31
1,158.0	6.24	178.16	1,157.3	-13.7	-6.0	9.3	2.18	2.14	-4.30
1,243.0	7.56	175.88	1,241.7	-23.9	-5.4	11.3	1.59	1.55	-2.68
1,332.0	9.23	173.24	1,329.8	-36.9	-4.2	13.4	1.93	1.88	-2.97
1,421.0	10.64	168.85	1,417.4	-52.0	-1.8	14.9	1.80	1.58	-4.93
1,511.0	11.96	169.90	1,505.7	-69.3	1.5	16.2	1.48	1.47	1.17
1,605.0	13.37	169.72	1,597.4	-89.6	5.1	17.8	1.50	1.50	-0.19
1,694.0	13.83	171.69	1,683.9	-110.3	8.5	19.8	0.73	0.52	2.21
1,783.0	13.76	168.24	1,770.3	-131.2	12.2	21.5	0.93	-0.08	-3.88
1,873.0	15.56	165.76	1,857.4	-153.4	17.4	22.2	2.12	2.00	-2.76
1,962.0	18.57	176.92	1,942.5	-179.1	21.1	25.1	4.98	3.38	12.54
2,051.0	20.47	177.88	2,026.4	-208.8	22.4	31.4	2.16	2.13	1.08
2,140.0	20.76	177.04	2,109.7	-240.1	23.8	38.0	0.47	0.33	-0.94
2,230.0	23.41	172.53	2,193.1	-273.8	26.9	43.5	3.49	2.94	-5.01
2,319.0	24.16	172.36	2,274.5	-309.3	31.7	48.0	0.85	0.84	-0.19
2,409.0	26.92	172.36	2,355.7	-347.8	36.8	52.7	3.07	3.07	0.00
2,498.0	26.90	171.53	2,435.1	-387.7	42.5	57.4	0.42	-0.02	-0.93
2,587.0	25.94	167.98	2,514.8	-426.6	49.5	60.5	2.08	-1.08	-3.99
2,677.0	26.79	170.69	2,595.4	-465.9	56.9	63.3	1.64	0.94	3.01
2,766.0	27.41	169.61	2,674.7	-505.8	63.8	66.8	0.89	0.70	-1.21
2,856.0	27.21	170.65	2,754.6	-546.5	70.9	70.3	0.57	-0.22	1.16
2,946.0	26.24	171.79	2,835.0	-586.5	77.1	74.4	1.22	-1.08	1.27
3,035.0	27.13	170.67	2,914.5	-626.0	83.2	78.6	1.15	1.00	-1.26
3,124.0	26.76	169.25	2,993.9	-665.7	90.2	81.9	0.83	-0.42	-1.60
3,214.0	26.91	168.77	3,074.2	-705.6	97.9	84.5	0.29	0.17	-0.53
3,303.0	26.68	167.81	3,153.6	-744.9	106.1	86.6	0.55	-0.26	-1.08
3,392.0	26.67	166.97	3,233.2	-783.9	114.8	88.1	0.42	-0.01	-0.94
3,481.0	25.16	169.82	3,313.2	-822.0	122.6	90.1	2.20	-1.70	3.20
3,571.0	27.05	169.69	3,394.0	-860.9	129.7	93.2	2.10	2.10	-0.14
3,660.0	27.99	169.32	3,472.9	-901.4	137.2	96.3	1.07	1.06	-0.42
3,749.0	27.94	171.60	3,551.6	-942.5	144.1	100.0	1.20	-0.06	2.56
3,781.2	27.94	171.57	3,580.0	-957.4	146.3	101.7	0.04	0.01	-0.09
Parkman									
3,839.0	27.95	171.52	3,631.1	-984.2	150.3	104.6	0.04	0.01	-0.09
3,929.0	28.06	171.50	3,710.5	-1,026.0	156.5	109.2	0.12	0.12	-0.02
4,018.0	28.23	170.34	3,789.0	-1,067.5	163.2	113.3	0.64	0.19	-1.30
4,107.0	29.13	171.80	3,867.1	-1,109.7	169.8	117.6	1.28	1.01	1.64
4,196.0	27.93	171.66	3,945.3	-1,151.8	175.9	122.4	1.35	-1.35	-0.16
4,285.0	27.53	170.57	4,024.1	-1,192.7	182.3	126.6	0.73	-0.45	-1.22
4,363.8	27.35	169.88	4,094.0	-1,228.5	188.4	129.7	0.46	-0.22	-0.88

Company:	PDC Energy Inc. DJ Basin	Local Co-ordinate Reference:	Well Everest 03N
Project:	Sec.34-T6N-R66W	TVD Reference:	WELL @ 4725.0ft (Ensign 142 - RKB 28')
Site:	Everest 6N66W34 1-11	MD Reference:	WELL @ 4725.0ft (Ensign 142 - RKB 28')
Well:	Everest 03N	North Reference:	True
Wellbore:	Everest 03N Wellbore #1	Survey Calculation Method:	Minimum Curvature
Design:	Everest 03N Final Surveys	Database:	US_EDM

Survey									
Measured Depth (ft)	Inclination (°)	Azimuth (°)	Vertical Depth (ft)	+N/-S (ft)	+E/-W (ft)	Vertical Section (ft)	Dogleg Rate (°/100usft)	Build Rate (°/100usft)	Turn Rate (°/100usft)
Sussex									
4,375.0	27.33	169.78	4,103.9	-1,233.5	189.4	130.1	0.46	-0.22	-0.88
4,464.0	27.85	171.04	4,182.8	-1,274.2	196.2	133.8	0.88	0.58	1.42
4,553.0	27.96	170.56	4,261.5	-1,315.3	202.9	137.8	0.28	0.12	-0.54
4,642.0	27.90	169.19	4,340.1	-1,356.3	210.2	141.2	0.72	-0.07	-1.54
4,732.0	27.79	170.48	4,419.7	-1,397.7	217.6	144.5	0.68	-0.12	1.43
4,823.0	27.65	171.47	4,500.2	-1,439.5	224.3	148.7	0.53	-0.15	1.09
4,912.0	27.38	169.98	4,579.2	-1,480.1	230.9	152.6	0.83	-0.30	-1.67
5,002.0	27.50	171.08	4,659.0	-1,521.0	237.7	156.4	0.58	0.13	1.22
5,058.3	27.62	170.26	4,709.0	-1,546.7	241.9	158.8	0.70	0.21	-1.45
Shannon									
5,091.0	27.69	169.79	4,737.9	-1,561.6	244.6	160.1	0.70	0.22	-1.44
5,181.0	28.13	168.59	4,817.5	-1,603.0	252.5	162.9	0.79	0.49	-1.33
5,270.0	27.52	168.35	4,896.2	-1,643.7	260.8	165.3	0.70	-0.69	-0.27
5,362.0	26.85	169.74	4,978.0	-1,685.0	268.8	168.0	1.00	-0.73	1.51
5,451.0	26.83	170.26	5,057.4	-1,724.5	275.7	171.3	0.26	-0.02	0.58
5,542.0	27.80	170.99	5,138.3	-1,765.7	282.5	175.2	1.13	1.07	0.80
5,632.0	25.57	167.87	5,218.7	-1,805.5	289.9	178.2	2.93	-2.48	-3.47
5,721.0	26.30	168.73	5,298.7	-1,843.6	297.8	180.2	0.92	0.82	0.97
5,810.0	26.41	169.24	5,378.5	-1,882.4	305.3	182.8	0.28	0.12	0.57
5,899.0	27.71	171.88	5,457.7	-1,922.3	312.0	186.5	1.99	1.46	2.97
5,989.0	27.43	172.10	5,537.5	-1,963.5	317.8	191.4	0.33	-0.31	0.24
6,079.0	26.87	170.26	5,617.6	-2,004.1	324.1	195.6	1.12	-0.62	-2.04
6,168.0	27.45	172.31	5,696.8	-2,044.3	330.2	199.8	1.24	0.65	2.30
6,258.0	27.37	171.97	5,776.7	-2,085.3	335.9	204.8	0.20	-0.09	-0.38
6,347.0	27.06	171.45	5,855.8	-2,125.6	341.7	209.3	0.44	-0.35	-0.58
6,437.0	27.64	172.38	5,935.8	-2,166.5	347.6	214.1	0.80	0.64	1.03
6,525.0	27.77	172.29	6,013.7	-2,207.1	353.0	219.1	0.16	0.15	-0.10
6,615.0	27.14	171.92	6,093.5	-2,248.2	358.7	224.1	0.73	-0.70	-0.41
6,704.0	27.27	173.14	6,172.7	-2,288.5	364.0	229.2	0.64	0.15	1.37
6,794.0	26.47	170.36	6,253.0	-2,328.8	369.8	233.8	1.65	-0.89	-3.09
6,884.0	26.55	178.04	6,333.5	-2,368.7	373.9	240.0	3.81	0.09	8.53
6,974.0	24.34	193.62	6,414.9	-2,406.8	370.2	253.3	7.81	-2.46	17.31
7,063.0	24.89	207.00	6,495.9	-2,441.4	357.4	274.4	6.28	0.62	15.03
7,152.0	27.71	222.10	6,575.7	-2,473.5	334.9	304.3	8.13	3.17	16.97
7,241.0	32.03	236.00	6,653.0	-2,502.1	301.5	343.9	9.14	4.85	15.62
7,331.0	37.91	245.78	6,726.8	-2,526.8	256.4	393.8	9.01	6.53	10.87
7,421.0	44.14	252.65	6,794.7	-2,547.5	201.2	452.5	8.54	6.92	7.63
7,510.8	51.37	257.39	6,855.0	-2,564.5	137.0	518.8	8.95	8.06	5.28
Sharon Springs									
7,511.0	51.39	257.40	6,855.1	-2,564.6	136.8	519.0	8.95	8.16	4.72
7,567.3	54.69	257.86	6,889.0	-2,574.2	92.9	564.0	5.89	5.85	0.82
Niobrara A									
7,600.0	56.60	258.11	6,907.4	-2,579.8	66.5	590.9	5.89	5.86	0.76

Company:	PDC Energy Inc. DJ Basin	Local Co-ordinate Reference:	Well Everest 03N
Project:	Sec.34-T6N-R66W	TVD Reference:	WELL @ 4725.0ft (Ensign 142 - RKB 28')
Site:	Everest 6N66W34 1-11	MD Reference:	WELL @ 4725.0ft (Ensign 142 - RKB 28')
Well:	Everest 03N	North Reference:	True
Wellbore:	Everest 03N Wellbore #1	Survey Calculation Method:	Minimum Curvature
Design:	Everest 03N Final Surveys	Database:	US_EDM

Survey										
Measured Depth (ft)	Inclination (°)	Azimuth (°)	Vertical Depth (ft)	+N/-S (ft)	+E/-W (ft)	Vertical Section (ft)	Dogleg Rate (°/100usft)	Build Rate (°/100usft)	Turn Rate (°/100usft)	
7,690.0	64.20	260.18	6,951.9	-2,594.5	-10.3	668.9	8.68	8.44	2.30	
7,779.0	70.69	263.13	6,986.0	-2,606.3	-91.6	750.6	7.91	7.29	3.31	
7,869.0	76.69	265.49	7,011.3	-2,614.9	-177.5	835.8	7.13	6.67	2.62	
7,875.4	77.18	265.60	7,012.7	-2,615.4	-183.7	841.9	7.78	7.59	1.76	
03N EP - 2112' FSL & 2495' FWL										
7,906.6	79.54	266.14	7,019.0	-2,617.6	-214.2	872.0	7.78	7.59	1.74	
Niobrara B										
7,958.0	83.45	267.02	7,026.6	-2,620.6	-264.9	921.8	7.78	7.60	1.70	
8,047.0	89.98	268.69	7,031.7	-2,623.9	-353.7	1,008.5	7.57	7.34	1.88	
8,137.0	89.95	268.39	7,031.8	-2,626.2	-443.6	1,096.1	0.33	-0.03	-0.33	
8,226.0	89.85	268.52	7,031.9	-2,628.6	-532.6	1,182.8	0.18	-0.11	0.15	
8,316.0	89.65	269.70	7,032.3	-2,630.0	-622.6	1,270.1	1.33	-0.22	1.31	
8,405.0	90.13	269.90	7,032.5	-2,630.3	-711.6	1,356.3	0.58	0.54	0.22	
8,495.0	89.58	269.29	7,032.7	-2,630.9	-801.6	1,443.5	0.91	-0.61	-0.68	
8,584.0	89.97	269.36	7,033.0	-2,632.0	-890.6	1,529.9	0.45	0.44	0.08	
8,674.0	89.72	269.88	7,033.3	-2,632.6	-980.6	1,617.1	0.64	-0.28	0.58	
8,763.0	89.95	270.12	7,033.5	-2,632.6	-1,069.6	1,703.1	0.37	0.26	0.27	
8,853.0	89.99	270.01	7,033.6	-2,632.5	-1,159.6	1,790.2	0.13	0.04	-0.12	
8,942.0	89.58	270.01	7,033.9	-2,632.5	-1,248.6	1,876.2	0.46	-0.46	0.00	
9,031.0	89.77	270.13	7,034.4	-2,632.4	-1,337.6	1,962.3	0.25	0.21	0.13	
9,121.0	89.42	269.89	7,035.1	-2,632.3	-1,427.6	2,049.3	0.47	-0.39	-0.27	
9,210.0	90.13	270.36	7,035.4	-2,632.2	-1,516.6	2,135.4	0.96	0.80	0.53	
9,299.0	89.95	270.34	7,035.4	-2,631.6	-1,605.6	2,221.3	0.20	-0.20	-0.02	
9,389.0	90.22	270.34	7,035.2	-2,631.1	-1,695.6	2,308.2	0.30	0.30	0.00	
9,479.0	89.67	270.32	7,035.3	-2,630.6	-1,785.6	2,395.1	0.61	-0.61	-0.02	
9,568.0	89.75	269.97	7,035.8	-2,630.3	-1,874.6	2,481.2	0.40	0.09	-0.39	
9,657.0	89.85	270.09	7,036.1	-2,630.3	-1,963.6	2,567.2	0.18	0.11	0.13	
9,747.0	89.45	269.89	7,036.6	-2,630.3	-2,053.6	2,654.3	0.50	-0.44	-0.22	
9,836.0	89.88	270.20	7,037.1	-2,630.2	-2,142.6	2,740.3	0.60	0.48	0.35	
9,925.0	89.63	270.09	7,037.5	-2,630.0	-2,231.6	2,826.4	0.31	-0.28	-0.12	
10,015.0	90.58	270.25	7,037.4	-2,629.7	-2,321.6	2,913.3	1.07	1.06	0.18	
10,104.0	90.31	270.58	7,036.7	-2,629.1	-2,410.5	2,999.2	0.48	-0.30	0.37	
10,193.0	90.55	270.18	7,036.0	-2,628.5	-2,499.5	3,085.2	0.52	0.27	-0.45	
10,283.0	90.08	269.90	7,035.5	-2,628.4	-2,589.5	3,172.2	0.61	-0.52	-0.31	
10,372.0	90.50	270.29	7,035.1	-2,628.3	-2,678.5	3,258.3	0.64	0.47	0.44	
10,462.0	90.22	270.13	7,034.5	-2,628.0	-2,768.5	3,345.2	0.36	-0.31	-0.18	
10,551.0	90.11	269.59	7,034.2	-2,628.2	-2,857.5	3,431.3	0.62	-0.12	-0.61	
10,641.0	90.22	269.48	7,034.0	-2,628.9	-2,947.5	3,518.6	0.17	0.12	-0.12	
10,730.0	90.06	269.79	7,033.8	-2,629.5	-3,036.5	3,604.8	0.39	-0.18	0.35	
10,820.0	90.55	269.81	7,033.3	-2,629.8	-3,126.5	3,691.9	0.54	0.54	0.02	
10,909.0	90.12	269.37	7,032.8	-2,630.4	-3,215.5	3,778.2	0.69	-0.48	-0.49	
10,998.0	90.08	269.53	7,032.6	-2,631.3	-3,304.5	3,864.5	0.19	-0.04	0.18	
11,088.0	90.20	269.71	7,032.4	-2,631.9	-3,394.5	3,951.7	0.24	0.13	0.20	
11,177.0	90.35	270.06	7,032.0	-2,632.1	-3,483.5	4,037.8	0.43	0.17	0.39	

Company:	PDC Energy Inc. DJ Basin	Local Co-ordinate Reference:	Well Everest 03N
Project:	Sec.34-T6N-R66W	TVD Reference:	WELL @ 4725.0ft (Ensign 142 - RKB 28')
Site:	Everest 6N66W34 1-11	MD Reference:	WELL @ 4725.0ft (Ensign 142 - RKB 28')
Well:	Everest 03N	North Reference:	True
Wellbore:	Everest 03N Wellbore #1	Survey Calculation Method:	Minimum Curvature
Design:	Everest 03N Final Surveys	Database:	US_EDM

Survey									
Measured Depth (ft)	Inclination (°)	Azimuth (°)	Vertical Depth (ft)	+N/-S (ft)	+E/-W (ft)	Vertical Section (ft)	Dogleg Rate (°/100usft)	Build Rate (°/100usft)	Turn Rate (°/100usft)
11,267.0	90.27	269.90	7,031.5	-2,632.1	-3,573.5	4,124.8	0.20	-0.09	-0.18
11,356.0	90.33	269.72	7,031.0	-2,632.4	-3,662.5	4,211.0	0.21	0.07	-0.20
11,446.0	90.37	269.68	7,030.5	-2,632.9	-3,752.5	4,298.2	0.06	0.04	-0.04
11,536.0	90.05	269.81	7,030.1	-2,633.3	-3,842.5	4,385.3	0.38	-0.36	0.14
11,624.0	89.77	269.59	7,030.3	-2,633.7	-3,930.5	4,470.5	0.40	-0.32	-0.25
11,714.0	90.38	269.94	7,030.1	-2,634.1	-4,020.5	4,557.7	0.78	0.68	0.39
11,804.0	90.03	269.69	7,029.8	-2,634.4	-4,110.5	4,644.8	0.48	-0.39	-0.28
11,893.0	90.08	269.89	7,029.7	-2,634.7	-4,199.5	4,731.0	0.23	0.06	0.22
11,983.0	90.22	269.94	7,029.5	-2,634.8	-4,289.5	4,818.1	0.17	0.16	0.06
12,072.0	90.59	270.24	7,028.9	-2,634.7	-4,378.5	4,904.1	0.54	0.42	0.34
12,162.0	90.46	269.86	7,028.0	-2,634.6	-4,468.5	4,991.1	0.45	-0.14	-0.42
12,252.0	89.78	269.80	7,027.9	-2,634.9	-4,558.5	5,078.2	0.76	-0.76	-0.07
12,341.0	90.63	270.12	7,027.5	-2,634.9	-4,647.5	5,164.3	1.02	0.96	0.36
12,431.0	90.44	270.07	7,026.7	-2,634.8	-4,737.5	5,251.3	0.22	-0.21	-0.06
12,521.0	90.02	269.53	7,026.3	-2,635.1	-4,827.5	5,338.5	0.76	-0.47	-0.60
12,610.0	89.25	269.57	7,026.9	-2,635.8	-4,916.5	5,424.7	0.87	-0.87	0.04
12,699.0	89.38	270.09	7,028.0	-2,636.1	-5,005.5	5,510.9	0.60	0.15	0.58
12,789.0	88.84	269.54	7,029.4	-2,636.4	-5,095.5	5,598.0	0.86	-0.60	-0.61
12,878.0	89.64	269.27	7,030.5	-2,637.3	-5,184.4	5,684.3	0.95	0.90	-0.30
12,968.0	89.28	268.73	7,031.4	-2,638.9	-5,274.4	5,771.7	0.72	-0.40	-0.60
13,057.0	88.99	268.71	7,032.7	-2,640.9	-5,363.4	5,858.3	0.33	-0.33	-0.02
13,146.0	91.15	268.96	7,032.6	-2,642.7	-5,452.4	5,944.8	2.44	2.43	0.28
13,235.0	92.32	268.94	7,029.9	-2,644.3	-5,541.3	6,031.2	1.31	1.31	-0.02
13,325.0	92.77	269.45	7,025.9	-2,645.6	-5,631.2	6,118.5	0.76	0.50	0.57
13,414.0	92.52	269.09	7,021.8	-2,646.7	-5,720.1	6,204.8	0.49	-0.28	-0.40
13,504.0	91.82	268.77	7,018.4	-2,648.4	-5,810.0	6,292.2	0.86	-0.78	-0.36
13,593.0	92.25	269.29	7,015.3	-2,649.9	-5,899.0	6,378.6	0.76	0.48	0.58
13,682.0	91.90	268.28	7,012.0	-2,651.8	-5,987.9	6,465.0	1.20	-0.39	-1.13
13,772.0	92.50	268.92	7,008.6	-2,654.0	-6,077.8	6,552.6	0.97	0.67	0.71
13,861.0	92.64	269.21	7,004.6	-2,655.4	-6,166.7	6,638.9	0.36	0.16	0.33
13,950.0	92.42	269.16	7,000.7	-2,656.7	-6,255.6	6,725.2	0.25	-0.25	-0.06
14,039.0	92.05	269.16	6,997.2	-2,658.0	-6,344.5	6,811.6	0.42	-0.42	0.00
14,128.0	91.87	269.08	6,994.2	-2,659.3	-6,433.5	6,897.9	0.22	-0.20	-0.09
14,217.0	92.50	269.46	6,990.8	-2,660.5	-6,522.4	6,984.2	0.83	0.71	0.43
14,306.0	92.53	269.00	6,986.9	-2,661.7	-6,611.3	7,070.5	0.52	0.03	-0.52
14,396.0	92.46	269.40	6,982.9	-2,662.9	-6,701.2	7,157.8	0.45	-0.08	0.44
14,484.0	91.90	268.71	6,979.6	-2,664.4	-6,789.1	7,243.2	1.01	-0.64	-0.78
14,574.0	92.46	269.37	6,976.2	-2,665.9	-6,879.0	7,330.6	0.96	0.62	0.73
14,664.0	92.60	269.39	6,972.2	-2,666.9	-6,968.9	7,417.8	0.16	0.16	0.02
14,753.0	92.19	269.15	6,968.5	-2,668.0	-7,057.9	7,504.0	0.53	-0.46	-0.27
14,843.0	92.53	269.19	6,964.8	-2,669.3	-7,147.8	7,591.3	0.38	0.38	0.04
14,933.0	91.69	268.79	6,961.5	-2,670.9	-7,237.7	7,678.7	1.03	-0.93	-0.44
15,022.0	92.50	269.36	6,958.2	-2,672.3	-7,326.6	7,765.1	1.11	0.91	0.64

Company:	PDC Energy Inc. DJ Basin	Local Co-ordinate Reference:	Well Everest 03N
Project:	Sec.34-T6N-R66W	TVD Reference:	WELL @ 4725.0ft (Ensign 142 - RKB 28')
Site:	Everest 6N66W34 1-11	MD Reference:	WELL @ 4725.0ft (Ensign 142 - RKB 28')
Well:	Everest 03N	North Reference:	True
Wellbore:	Everest 03N Wellbore #1	Survey Calculation Method:	Minimum Curvature
Design:	Everest 03N Final Surveys	Database:	US_EDM

Survey										
Measured Depth (ft)	Inclination (°)	Azimuth (°)	Vertical Depth (ft)	+N/-S (ft)	+E/-W (ft)	Vertical Section (ft)	Dogleg Rate (°/100usft)	Build Rate (°/100usft)	Turn Rate (°/100usft)	
15,112.0	92.53	269.30	6,954.2	-2,673.4	-7,416.5	7,852.3	0.07	0.03	-0.07	
15,201.0	92.73	268.46	6,950.2	-2,675.1	-7,505.4	7,938.7	0.97	0.22	-0.94	
15,291.0	92.00	268.24	6,946.5	-2,677.7	-7,595.3	8,026.3	0.85	-0.81	-0.24	
15,380.0	92.45	268.12	6,943.0	-2,680.5	-7,684.2	8,113.0	0.52	0.51	-0.13	
15,470.0	92.51	268.19	6,939.1	-2,683.4	-7,774.1	8,200.7	0.10	0.07	0.08	
15,560.0	92.44	268.40	6,935.2	-2,686.1	-7,863.9	8,288.3	0.25	-0.08	0.23	
15,649.0	92.21	268.07	6,931.6	-2,688.8	-7,952.8	8,375.0	0.45	-0.26	-0.37	
15,739.0	92.49	268.48	6,927.9	-2,691.5	-8,042.7	8,462.6	0.55	0.31	0.46	
15,828.0	91.92	267.98	6,924.5	-2,694.3	-8,131.6	8,549.3	0.85	-0.64	-0.56	
15,917.0	92.15	268.14	6,921.3	-2,697.3	-8,220.5	8,636.0	0.31	0.26	0.18	
16,006.0	93.20	268.15	6,917.2	-2,700.2	-8,309.3	8,722.7	1.18	1.18	0.01	
16,095.0	93.57	268.33	6,911.9	-2,702.9	-8,398.2	8,809.3	0.46	0.42	0.20	
16,184.0	93.49	268.25	6,906.4	-2,705.5	-8,486.9	8,895.8	0.13	-0.09	-0.09	
16,274.0	93.24	268.40	6,901.2	-2,708.2	-8,576.7	8,983.3	0.32	-0.28	0.17	
16,363.0	93.40	268.19	6,896.0	-2,710.8	-8,665.6	9,069.9	0.30	0.18	-0.24	
16,453.0	93.02	267.90	6,891.0	-2,713.9	-8,755.4	9,157.5	0.53	-0.42	-0.32	
16,542.0	93.32	268.21	6,886.0	-2,716.9	-8,844.2	9,244.2	0.48	0.34	0.35	
16,631.0	92.69	268.32	6,881.4	-2,719.6	-8,933.0	9,330.8	0.72	-0.71	0.12	
16,721.0	92.07	268.28	6,877.6	-2,722.3	-9,022.9	9,418.4	0.69	-0.69	-0.04	
16,810.0	92.18	268.16	6,874.3	-2,725.0	-9,111.8	9,505.1	0.18	0.12	-0.13	
16,900.0	91.81	267.73	6,871.2	-2,728.2	-9,201.7	9,592.9	0.63	-0.41	-0.48	
16,990.0	92.36	268.39	6,867.9	-2,731.3	-9,291.6	9,680.6	0.95	0.61	0.73	
17,080.0	92.31	268.79	6,864.3	-2,733.5	-9,381.5	9,768.1	0.45	-0.06	0.44	
17,169.0	92.35	268.76	6,860.6	-2,735.4	-9,470.4	9,854.6	0.06	0.04	-0.03	
17,258.0	91.89	268.45	6,857.4	-2,737.6	-9,559.3	9,941.1	0.62	-0.52	-0.35	
17,437.0	91.28	268.52	6,852.4	-2,742.3	-9,738.2	10,115.3	0.34	-0.34	0.04	
17,526.0	91.03	268.56	6,850.6	-2,744.6	-9,827.1	10,201.9	0.28	-0.28	0.04	
17,615.0	91.42	268.44	6,848.7	-2,746.9	-9,916.1	10,288.6	0.46	0.44	-0.13	
17,705.0	91.37	268.33	6,846.5	-2,749.4	-10,006.0	10,376.2	0.13	-0.06	-0.12	
17,794.0	91.31	268.35	6,844.4	-2,752.0	-10,094.9	10,462.9	0.07	-0.07	0.02	
17,973.0	91.37	268.54	6,840.2	-2,756.9	-10,273.8	10,637.1	0.11	0.03	0.11	
18,062.0	91.15	268.64	6,838.3	-2,759.1	-10,362.8	10,723.7	0.27	-0.25	0.11	
18,166.0	91.15	268.64	6,836.2	-2,761.5	-10,466.7	10,824.9	0.00	0.00	0.00	
03N BHL - 2025' FSL & 2502' FEL										

Company:	PDC Energy Inc. DJ Basin	Local Co-ordinate Reference:	Well Everest 03N
Project:	Sec.34-T6N-R66W	TVD Reference:	WELL @ 4725.0ft (Ensign 142 - RKB 28')
Site:	Everest 6N66W34 1-11	MD Reference:	WELL @ 4725.0ft (Ensign 142 - RKB 28')
Well:	Everest 03N	North Reference:	True
Wellbore:	Everest 03N Wellbore #1	Survey Calculation Method:	Minimum Curvature
Design:	Everest 03N Final Surveys	Database:	US_EDM

Formations					
Measured Depth (ft)	Vertical Depth (ft)	Name	Lithology	Dip (°)	Dip Direction (°)
748.1	748.0	Fox Hills Aq Base			
3,781.2	3,580.0	Parkman			
4,363.8	4,094.0	Sussex			
5,058.3	4,709.0	Shannon			
7,510.8	6,855.0	Sharon Springs			
7,567.3	6,889.0	Niobrara A			
7,906.6	7,019.0	Niobrara B			

Design Annotations					
Measured Depth (ft)	Vertical Depth (ft)	Local Coordinates		Comment	
		+N/-S (ft)	+E/-W (ft)		
7,875.4	7,012.7	-2,615.4	-183.7	03N EP - 2112' FSL & 2495' FWL	
18,166.0	6,836.2	-2,761.5	-10,466.7	03N BHL - 2025' FSL & 2502' FEL	

Checked By: _____ Approved By: _____ Date: _____