

# Cement Post Job Report

**Client:** PDC Energy

**Well Name:** Everest 3N

**API #:** 05-123-51670-00

**Job Date:** June 27, 2022

**Job Type:** New Well - 5.5" Production String

**Cement Company & Contact:** EXERO Well Integrity -  
Cheve Meyer 720-239-3819



ROCK SOLID  
WELL INTEGRITY  
SOLUTIONS

**TREATMENT REPORT**

Client	Well	Rig	Date	Job Type				
PDC Energy	Everest 03N	Ensign 142	6/27/2022	Production				
Connection Type	Thread Type	Number of Stages	BHST Deg	BHCT Deg				
5 1/2" HP Cement Head	Buttress	1	230	230				
Well MD (ft)	Well TVD (ft)	Deg Dev.	Max-Cas/DP PSI	Max Ann. PSI				
18166	6836	90	8000					
Packer/Retainer/CIBP/DV Tool Depths		Top of Perfs	Bottom of Perfs	Number of Holes				
String	Casing/Tubing Type	OD	Wt/ft	ID	OH Size	% XS Lead	% XS Tail	Depth (ft)
Surface	Casing	9.625	36					1654
Production	Casing	5.5	20	4.778	8.5	0	0	18155

**PRE-JOB MUD AND WELL CONDITIONS**

Mud Type	OBM	Pipe Rotation		Circulation Data				Water Requirements (bbls)	
Mud wt. ppg	11	Rotate Y,N	Yes	Circulate Time (hrs)	1.5			Spacers	140
Flow Temp	131	Rate		Circulation Rate (bpm)	10			Stage 1 Lead	118
Vis. Sec/qt		Torque Val.		Full Circ?	Full			Stage 1 Tail	250
PV (cP)	21	Time		Gas Present (Y,N)	Units		Stage 2 Lead	0	
Yield Pt	6	Pipe Reciprocation		Centralizers/Plugs				Stage 2 Tail	0
10 sec gel	4	Recip Y,N		Quantity & Type				Displacement	402
10 min gel	5	Stroke (ft)		Top Plug/Type	operator provided			Wash up	20
30 min gel	6	Recip time		Bottom Plug/Type/Burst p	operator provided			Total + 10% Safety	1024

**PRE-JOB CALCULATED MATERIALS, VOLUMES, & RATES**

Prelflush & Spacers		Stage 1 Lead: Class G		Stage 1 Tail: Class G		Stage 2 Lead: NA		Stage 2 Tail: NA		Displacement	
Spacer 1	Spacer	Density	12.9	Density	13.7	Density		Density		Fluid Type	Water
Density	12	Sacks	1276	Sacks	1585	Sacks		Sacks		Dens. ppg	8.33
Volume	140	Vol/bbls	256.8	Vol/bbls	386.7	Vol/bbls	0.0	Vol/bbls	0.0	Vol. bbl	402
Rate	10	Rate	11	Rate	11	Rate		Rate		Rate bpm	11
Spacer 2		Yield	1.13	Yield	1.37	Yield		Yield		Clay Stay?	
Density		Gal/Sk	3.90	Gal/Sk	6.63	Gal/Sk		Gal/Sk		Biocide ?	Yes
Volume		% Excess	0	% Excess	0	% Excess		% Excess		Slow @ bbl	380
Rate		TOL (ft)	2400	TOT (ft)	8674	TOL (ft)		TOT (ft)		Bump PSI	3500

**POST JOB DETAILS, FINAL VOLUMES & PRESSURES**

Final Displacement (bbls)	402
Bump Plug?	Yes
Final Bump Pressure (psi)	3500
Full Returns throughout job?	Full
Vol away/Time when returns lost	
Vol away/Time When returns regained	

Top out cement type	NA
Density	NA
Sack Quantity	NA
Mix water requirement (gal/sk)	NA
Yield	NA

**Summary of Additives Used on Job**

Spacer to Surface?	Yes
Spacer volume returned	32
Cement to surface?	NO
Cement volume to surface stage 1 (bbls)	Stg 2
Surface top out?	
Top out volume pumped (bbls)	

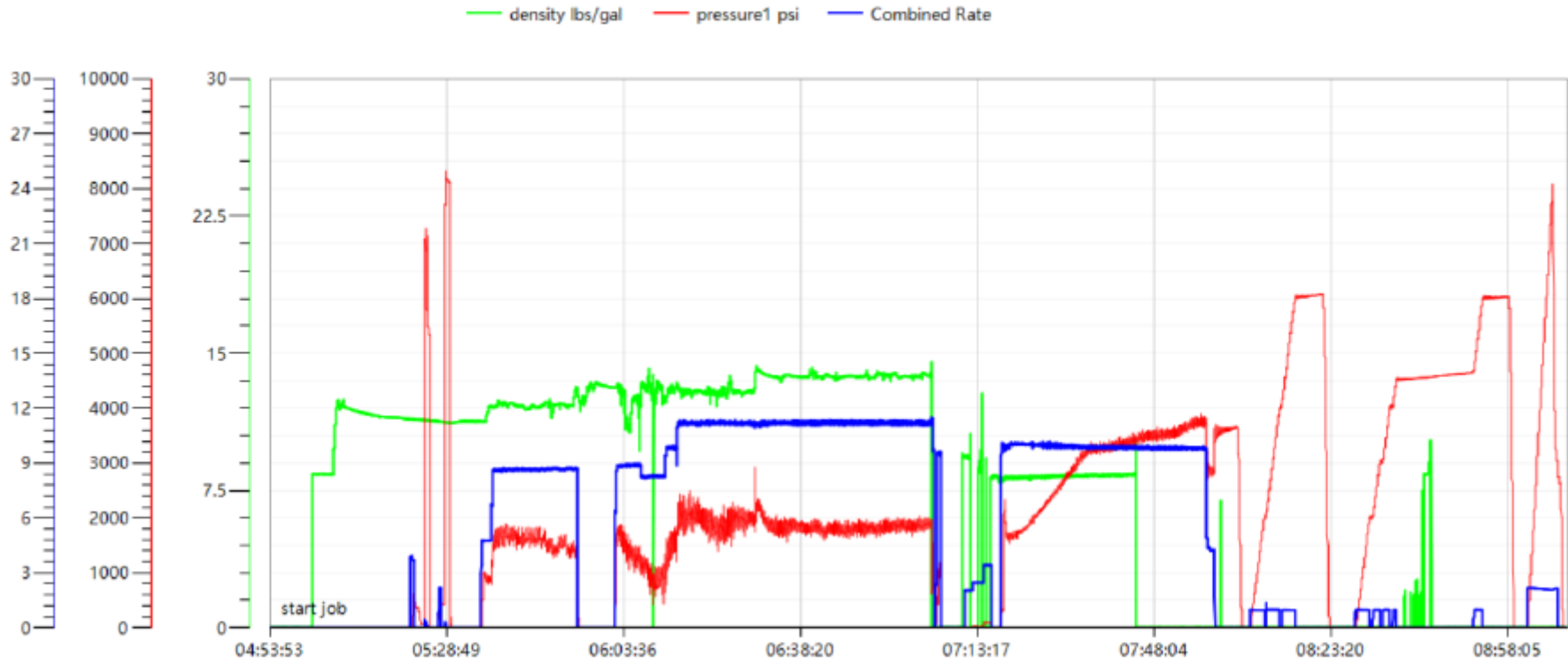
Surfactants (gal)	
Clay Stabilizer (gal)	
Biocide (gal)	
Corrosion Inhibitor (gal)	
Defoamer (gal)	
PhenoSeal (LCM lbs)	
Fiber (LCM lbs)	

## Job Treatment Log

Client	Well	Exero Supervisor
PDC Energy	Everest 03N	Luke Casciato 307-921-0318
Ambient Conditions ( Temperature / Humidity / Air Pressure )		51 Deg F / 89 % / 25.24 in

Date DD/MM	Time HH:MM	Density (ppg)	Rate (bpm)	Vol. (bbl)	Total Vol. (bbl)	Pressure (psi)	Treatment Comments
6/26/22	2:00 PM						Callout, crew requested on location at 23:30.
6/26/22	7:00 PM						Crew arrived on location, waiting for rig to run casing.
6/27/22	2:00 AM						spot Equipment.
6/27/22	2:30 AM						Rig up.
6/27/22	4:30 AM						Safety Meeting.
6/27/22	5:21 AM	8.33	3.50	3.0	3.0	85	filled lines.
6/27/22	5:24 AM					8000	pressure tested lines to 8000psi.
6/27/22	5:32 AM						dropped 1st bottom plug.
6/27/22	5:35 AM	12.00	10.00	140.0	140.0	2500	Mixed and pumped spacer with surfactant and fiber.
6/27/22	5:53 AM						shutdown and dropped bottom plug 2.
6/27/22	5:56 AM	12.90	11.50	256.0	256.0	1150	mixed and pumped 256bbl of lead cmt, estimated TOL 2395'. (1276sks, 1.13yld, 3.9gl/sk)
6/27/22	6:29 AM	13.70	11.50	387.0	387.0	2300	mixed and pumped 387bbl of tail cmt, estimated TOT 8670'.(1585sks,1.37yld,6.63gl/sk)
6/27/22	7:05 AM						Shutdown and washed pumps and lines
6/27/22	7:12 AM						dropped top plug.
6/27/22	7:17 AM	8.33	10.00	10.0	402.0	300	Fresh water displacement with biocide.
6/27/22	7:22 AM	8.33	10.00	50.0	402.0	1900	Fresh water displacement with biocide.
6/27/22	7:28 AM	8.33	10.00	100.0	402.0	2400	Fresh water displacement with biocide.
6/27/22	7:33 AM	8.33	10.00	150.0	402.0	3100	Fresh water displacement with biocide.
6/27/22	7:39 AM	8.33	10.00	200.0	402.0	3300	Fresh water displacement with biocide.
6/27/22	7:44 AM	8.33	10.00	250.0	402.0	3400	Fresh water displacement with biocide.
6/27/22	7:49 AM	8.33	10.00	300.0	402.0	3500	Fresh water displacement with biocide.
6/27/22	7:55 AM	8.33	10.00	350.0	402.0	3700	Fresh water displacement with biocide.
6/27/22	8:00 AM			402.0	402.0	3500	slowed rate last 20bbl to 4bpm. Landed @calculated, landed plug at 3000, bumped to
6/27/22	8:03 AM						checked floats, floats held, 5bbl back
6/27/22	8:05 AM						turned over to welltec tool hand for packer procedure.
6/27/22	9:06 AM						shifted @8000psi pumped 2bbl.
6/27/22	9:15 AM						rig down
6/27/22	10:00 AM						crew departs location.

# Everest 3N Production Pump Chart – Pressure / Rate / Density





## Centralizer Depths

**Well Name: Everest 03N**

**Production, Set Depth: 18,155.0ftKB**

API 05123516700000		Surface Legal Location NWNE 34 6N 66W		Field Name Wattenberg		State CO		Well Configuration Type Horizontal			
Ground Elevation (ft) 4,697.00		Original KB Elevation (ft) 4,725.00		KB-Ground Distance (ft) 28.00		Spud Date 6/23/2022 08:30		Rig Release Date 6/27/2022 11:45		On Production Date Abandon Date	

Casing Run Tally												
Run #	Ref #	Item Des	OD (in)	Wt (lb/ft)	Grade	Run?	Len (ft)	Centralized?	Ext Jw/ry	Connections	Top (ftKB)	Cum Len (ft)
7	1	Casing Joints	5 1/2	20.00	P-110	Yes	45.89	Yes			18,042.0	84.34
9	3	Casing Joints	5 1/2	20.00	P-110	Yes	46.25	Yes			17,949.8	176.55
11	5	Casing Joints	5 1/2	20.00	P-110	Yes	45.98	Yes			17,857.9	268.42
13	7	Casing Joints	5 1/2	20.00	P-110	Yes	45.97	Yes			17,768.8	357.58
15	9	Casing Joints	5 1/2	20.00	P-110	Yes	45.85	Yes			17,677.4	448.96
17		Marker Joint A	5 1/2	20.00	P-110	Yes	23.52	Yes			17,607.9	518.43
19	12	Casing Joints	5 1/2	20.00	P-110	Yes	44.70	Yes			17,517.9	608.47
21	14	Casing Joints	5 1/2	20.00	P-110	Yes	45.95	Yes			17,426.3	699.99
23	16	Casing Joints	5 1/2	20.00	P-110	Yes	45.95	Yes			17,334.7	791.62
25	18	Casing Joints	5 1/2	20.00	P-110	Yes	42.68	Yes			17,247.6	878.75
27	20	Casing Joints	5 1/2	20.00	P-110	Yes	45.85	Yes			17,157.1	969.28
29	22	Casing Joints	5 1/2	20.00	P-110	Yes	45.95	Yes			17,065.2	1,061.10
31	24	Casing Joints	5 1/2	20.00	P-110	Yes	45.93	Yes			16,973.4	1,152.92
33	26	Casing Joints	5 1/2	20.00	P-110	Yes	45.22	Yes			16,882.3	1,244.08
35	28	Casing Joints	5 1/2	20.00	P-110	Yes	44.16	Yes			16,792.2	1,334.09
37	30	Casing Joints	5 1/2	20.00	P-110	Yes	45.72	Yes			16,700.6	1,425.69
39	32	Casing Joints	5 1/2	20.00	P-110	Yes	43.06	Yes			16,612.4	1,513.90
41	34	Casing Joints	5 1/2	20.00	P-110	Yes	45.36	Yes			16,521.7	1,604.67
43	36	Casing Joints	5 1/2	20.00	P-110	Yes	45.99	Yes			16,429.7	1,696.67
45	38	Casing Joints	5 1/2	20.00	P-110	Yes	44.20	Yes			16,339.5	1,786.85
47	40	Casing Joints	5 1/2	20.00	P-110	Yes	42.98	Yes			16,251.5	1,874.81
49	42	Casing Joints	5 1/2	20.00	P-110	Yes	46.12	Yes			16,160.0	1,966.38
51	44	Casing Joints	5 1/2	20.00	P-110	Yes	45.90	Yes			16,068.1	2,058.27
53	46	Casing Joints	5 1/2	20.00	P-110	Yes	45.58	Yes			15,976.4	2,149.89
55	48	Casing Joints	5 1/2	20.00	P-110	Yes	46.03	Yes			15,885.2	2,241.10
57	50	Casing Joints	5 1/2	20.00	P-110	Yes	47.12	Yes			15,793.1	2,333.19
59	52	Casing Joints	5 1/2	20.00	P-110	Yes	45.89	Yes			15,701.2	2,425.14
61	54	Casing Joints	5 1/2	20.00	P-110	Yes	45.88	Yes			15,609.8	2,516.56
63	56	Casing Joints	5 1/2	20.00	P-110	Yes	45.94	Yes			15,518.3	2,608.03
65	58	Casing Joints	5 1/2	20.00	P-110	Yes	45.94	Yes			15,426.8	2,699.49
67	60	Casing Joints	5 1/2	20.00	P-110	Yes	45.94	Yes			15,335.0	2,791.31



## Centralizer Depths

**Well Name: Everest 03N**

**Production, Set Depth: 18,155.0ftKB**

API 05123516700000		Surface Legal Location NWNE 34 6N 66W		Field Name Wattenberg		State CO		Well Configuration Type Horizontal			
Ground Elevation (ft) 4,697.00	Original KB Elevation (ft) 4,725.00	KB-Ground Distance (ft) 28.00	Spud Date 6/23/2022 08:30	Rig Release Date 6/27/2022 11:45	On Production Date	Abandon Date					

### Casing Run Tally

Run #	Ref #	Item Des	OD (in)	Wt (lb/ft)	Grade	Run?	Len (ft)	Centralized?	Ext Jwry	Connections	Top (ftKB)	Cum Len (ft)
69	62	Casing Joints	5 1/2	20.00	P-110	Yes	46.77	Yes			15,242.3	2,884.05
71	64	Casing Joints	5 1/2	20.00	P-110	Yes	45.88	Yes			15,150.5	2,975.84
73	66	Casing Joints	5 1/2	20.00	P-110	Yes	44.35	Yes			15,060.3	3,066.08
75	68	Casing Joints	5 1/2	20.00	P-110	Yes	45.91	Yes			14,973.2	3,153.10
77	70	Casing Joints	5 1/2	20.00	P-110	Yes	45.86	Yes			14,880.6	3,245.77
79	72	Casing Joints	5 1/2	20.00	P-110	Yes	45.95	Yes			14,787.8	3,338.52
81	74	Casing Joints	5 1/2	20.00	P-110	Yes	46.80	Yes			14,694.8	3,431.58
83	76	Casing Joints	5 1/2	20.00	P-110	Yes	45.97	Yes			14,602.0	3,524.36
85	78	Casing Joints	5 1/2	20.00	P-110	Yes	45.88	Yes			14,511.3	3,615.04
87	80	Casing Joints	5 1/2	20.00	P-110	Yes	46.79	Yes			14,418.7	3,707.61
89	82	Casing Joints	5 1/2	20.00	P-110	Yes	45.88	Yes			14,327.0	3,799.35
91	84	Casing Joints	5 1/2	20.00	P-110	Yes	45.80	Yes			14,234.4	3,891.92
93	86	Casing Joints	5 1/2	20.00	P-110	Yes	45.80	Yes			14,142.7	3,983.60
95	88	Casing Joints	5 1/2	20.00	P-110	Yes	45.96	Yes			14,050.0	4,076.38
97	90	Casing Joints	5 1/2	20.00	P-110	Yes	45.97	Yes			13,958.0	4,168.31
99	92	Casing Joints	5 1/2	20.00	P-110	Yes	45.74	Yes			13,867.7	4,258.60
101	94	Casing Joints	5 1/2	20.00	P-110	Yes	45.85	Yes			13,776.0	4,350.33
103	96	Casing Joints	5 1/2	20.00	P-110	Yes	45.92	Yes			13,689.2	4,437.10
105	98	Casing Joints	5 1/2	20.00	P-110	Yes	45.89	Yes			13,599.1	4,527.19
107	100	Casing Joints	5 1/2	20.00	P-110	Yes	46.01	Yes			13,506.3	4,620.00
109	102	Casing Joints	5 1/2	20.00	P-110	Yes	46.30	Yes			13,414.1	4,712.21
111	104	Casing Joints	5 1/2	20.00	P-110	Yes	47.11	Yes			13,321.0	4,805.35
113	106	Casing Joints	5 1/2	20.00	P-110	Yes	45.30	Yes			13,229.9	4,896.43
115	108	Casing Joints	5 1/2	20.00	P-110	Yes	43.88	Yes			13,140.0	4,986.31
117	109	Casing Joints	5 1/2	20.00	P-110	Yes	43.74	Yes			13,072.9	5,053.48
119	111	Casing Joints	5 1/2	20.00	P-110	Yes	46.02	Yes			12,980.8	5,145.52
121	113	Casing Joints	5 1/2	20.00	P-110	Yes	45.98	Yes			12,888.9	5,237.39
123	115	Casing Joints	5 1/2	20.00	P-110	Yes	45.93	Yes			12,797.0	5,329.29
125	117	Casing Joints	5 1/2	20.00	P-110	Yes	45.90	Yes			12,705.4	5,420.95
127	119	Casing Joints	5 1/2	20.00	P-110	Yes	45.94	Yes			12,613.6	5,512.76
129	121	Casing Joints	5 1/2	20.00	P-110	Yes	45.90	Yes			12,521.7	5,604.61



## Centralizer Depths

**Well Name: Everest 03N**

**Production, Set Depth: 18,155.0ftKB**

API 05123516700000		Surface Legal Location NWNE 34 6N 66W		Field Name Wattenberg		State CO		Well Configuration Type Horizontal			
Ground Elevation (ft) 4,697.00	Original KB Elevation (ft) 4,725.00	KB-Ground Distance (ft) 28.00	Spud Date 6/23/2022 08:30	Rig Release Date 6/27/2022 11:45	On Production Date	Abandon Date					

Casing Run Tally												
Run #	Ref #	Item Des	OD (in)	Wt (lb/ft)	Grade	Run?	Len (ft)	Centralized?	Ext Jwry	Connections	Top (ftKB)	Cum Len (ft)
131	123	Casing Joints	5 1/2	20.00	P-110	Yes	45.89	Yes			12,429.8	5,696.52
133	125	Casing Joints	5 1/2	20.00	P-110	Yes	45.95	Yes			12,337.9	5,788.44
135	127	Casing Joints	5 1/2	20.00	P-110	Yes	46.00	Yes			12,246.4	5,879.96
137	129	Casing Joints	5 1/2	20.00	P-110	Yes	45.89	Yes			12,154.7	5,971.65
139	131	Casing Joints	5 1/2	20.00	P-110	Yes	45.92	Yes			12,062.8	6,063.56
141	133	Casing Joints	5 1/2	20.00	P-110	Yes	45.94	Yes			11,970.8	6,155.52
143	135	Casing Joints	5 1/2	20.00	P-110	Yes	45.90	Yes			11,879.0	6,247.33
145	137	Casing Joints	5 1/2	20.00	P-110	Yes	45.84	Yes			11,787.5	6,338.79
147	139	Casing Joints	5 1/2	20.00	P-110	Yes	42.42	Yes			11,699.2	6,427.13
149	141	Casing Joints	5 1/2	20.00	P-110	Yes	45.89	Yes			11,607.3	6,519.05
151	143	Casing Joints	5 1/2	20.00	P-110	Yes	45.14	Yes			11,516.3	6,610.03
153	145	Casing Joints	5 1/2	20.00	P-110	Yes	45.64	Yes			11,425.1	6,701.22
155	147	Casing Joints	5 1/2	20.00	P-110	Yes	45.60	Yes			11,333.6	6,792.76
157	149	Casing Joints	5 1/2	20.00	P-110	Yes	45.87	Yes			11,250.9	6,875.43
159	151	Casing Joints	5 1/2	20.00	P-110	Yes	45.87	Yes			11,159.4	6,966.95
161	153	Casing Joints	5 1/2	20.00	P-110	Yes	45.88	Yes			11,067.9	7,058.42
163	155	Casing Joints	5 1/2	20.00	P-110	Yes	44.44	Yes			10,977.5	7,148.86
165	157	Casing Joints	5 1/2	20.00	P-110	Yes	38.50	Yes			10,893.1	7,233.26
167	159	Casing Joints	5 1/2	20.00	P-110	Yes	45.89	Yes			10,801.2	7,325.18
169	161	Casing Joints	5 1/2	20.00	P-110	Yes	46.00	Yes			10,709.2	7,417.17
171	163	Casing Joints	5 1/2	20.00	P-110	Yes	45.86	Yes			10,617.3	7,508.99
173	165	Casing Joints	5 1/2	20.00	P-110	Yes	37.82	Yes			10,533.6	7,592.76
175	167	Casing Joints	5 1/2	20.00	P-110	Yes	45.97	Yes			10,441.6	7,684.72
177	169	Casing Joints	5 1/2	20.00	P-110	Yes	45.88	Yes			10,349.8	7,776.55
179	171	Casing Joints	5 1/2	20.00	P-110	Yes	45.89	Yes			10,258.0	7,868.31
181	173	Casing Joints	5 1/2	20.00	P-110	Yes	45.91	Yes			10,166.1	7,960.19
183	175	Casing Joints	5 1/2	20.00	P-110	Yes	45.88	Yes			10,074.4	8,051.97
185	177	Casing Joints	5 1/2	20.00	P-110	Yes	45.57	Yes			9,982.9	8,143.42
187	179	Casing Joints	5 1/2	20.00	P-110	Yes	45.89	Yes			9,891.1	8,235.28
189	181	Casing Joints	5 1/2	20.00	P-110	Yes	46.00	Yes			9,799.1	8,327.22
191	183	Casing Joints	5 1/2	20.00	P-110	Yes	45.86	Yes			9,707.7	8,418.67



## Centralizer Depths

**Well Name: Everest 03N**

**Production, Set Depth: 18,155.0ftKB**

API 05123516700000		Surface Legal Location NWNE 34 6N 66W		Field Name Wattenberg		State CO		Well Configuration Type Horizontal			
Ground Elevation (ft) 4,697.00	Original KB Elevation (ft) 4,725.00	KB-Ground Distance (ft) 28.00	Spud Date 6/23/2022 08:30	Rig Release Date 6/27/2022 11:45	On Production Date	Abandon Date					

### Casing Run Tally

Run #	Ref #	Item Des	OD (in)	Wt (lb/ft)	Grade	Run?	Len (ft)	Centralized?	Ext Jwry	Connections	Top (ftKB)	Cum Len (ft)
193	185	Casing Joints	5 1/2	20.00	P-110	Yes	45.84	Yes			9,615.9	8,510.40
195	187	Casing Joints	5 1/2	20.00	P-110	Yes	45.89	Yes			9,524.1	8,602.25
197	189	Casing Joints	5 1/2	20.00	P-110	Yes	45.84	Yes			9,433.5	8,692.88
199	191	Casing Joints	5 1/2	20.00	P-110	Yes	45.42	Yes			9,342.1	8,784.27
201	193	Casing Joints	5 1/2	20.00	P-110	Yes	45.86	Yes			9,250.3	8,876.04
203	195	Casing Joints	5 1/2	20.00	P-110	Yes	44.32	Yes			9,160.1	8,966.25
205	197	Casing Joints	5 1/2	20.00	P-110	Yes	42.10	Yes			9,076.0	9,050.31
207	199	Casing Joints	5 1/2	20.00	P-110	Yes	43.08	Yes			8,990.8	9,135.55
209	201	Casing Joints	5 1/2	20.00	P-110	Yes	45.59	Yes			8,899.1	9,227.23
211	203	Casing Joints	5 1/2	20.00	P-110	Yes	45.44	Yes			8,811.5	9,314.79
213	205	Casing Joints	5 1/2	20.00	P-110	Yes	45.56	Yes			8,720.2	9,406.17
215	207	Casing Joints	5 1/2	20.00	P-110	Yes	41.45	Yes			8,633.0	9,493.34
217	209	Casing Joints	5 1/2	20.00	P-110	Yes	42.56	Yes			8,544.6	9,581.76
219	211	Casing Joints	5 1/2	20.00	P-110	Yes	45.58	Yes			8,456.4	9,669.91
221	213	Casing Joints	5 1/2	20.00	P-110	Yes	45.86	Yes			8,364.7	9,761.63
223	215	Casing Joints	5 1/2	20.00	P-110	Yes	45.85	Yes			8,272.7	9,853.64
225	217	Casing Joints	5 1/2	20.00	P-110	Yes	46.69	Yes			8,180.0	9,946.33
227	219	Casing Joints	5 1/2	20.00	P-110	Yes	45.75	Yes			8,088.4	10,037.94
229		Marker Joint C	5 1/2	20.00	P-110	Yes	23.49	Yes			8,020.2	10,106.18
230	221	Casing Joints	5 1/2	20.00	P-110	Yes	45.92	Yes			7,974.2	10,152.10
231	222	Casing Joints	5 1/2	20.00	P-110	Yes	46.01	Yes			7,928.2	10,198.11
232	223	Casing Joints	5 1/2	20.00	P-110	Yes	45.92	Yes			7,882.3	10,244.03
233	224	Casing Joints	5 1/2	20.00	P-110	Yes	45.91	Yes			7,836.4	10,289.94
234	225	Casing Joints	5 1/2	20.00	P-110	Yes	45.99	Yes			7,790.4	10,335.93
235	226	Casing Joints	5 1/2	20.00	P-110	Yes	45.99	Yes			7,744.4	10,381.92
236	227	Casing Joints	5 1/2	20.00	P-110	Yes	45.32	Yes			7,699.1	10,427.24
237	228	Casing Joints	5 1/2	20.00	P-110	Yes	45.97	Yes			7,653.1	10,473.21
238	229	Casing Joints	5 1/2	20.00	P-110	Yes	45.43	Yes			7,607.7	10,518.64
239	230	Casing Joints	5 1/2	20.00	P-110	Yes	45.99	Yes			7,561.7	10,564.63
240	231	Casing Joints	5 1/2	20.00	P-110	Yes	45.97	Yes			7,515.7	10,610.60
241	232	Casing Joints	5 1/2	20.00	P-110	Yes	45.96	Yes			7,469.8	10,656.56



## Centralizer Depths

**Well Name: Everest 03N**

**Production, Set Depth: 18,155.0ftKB**

API 0512351670000		Surface Legal Location NWNE 34 6N 66W		Field Name Wattenberg		State CO		Well Configuration Type Horizontal			
Ground Elevation (ft) 4,697.00	Original KB Elevation (ft) 4,725.00	KB-Ground Distance (ft) 28.00	Spud Date 6/23/2022 08:30	Rig Release Date 6/27/2022 11:45	On Production Date	Abandon Date					

### Casing Run Tally

Run #	Ref #	Item Des	OD (in)	Wt (lb/ft)	Grade	Run?	Len (ft)	Centralized?	Ext Jwly	Connections	Top (ftKB)	Cum Len (ft)
242	233	Casing Joints	5 1/2	20.00	P-110	Yes	45.30	Yes			7,424.5	10,701.86
243	234	Casing Joints	5 1/2	20.00	P-110	Yes	45.94	Yes			7,378.5	10,747.80
244	235	Casing Joints	5 1/2	20.00	P-110	Yes	45.61	Yes			7,332.9	10,793.41
245	236	Casing Joints	5 1/2	20.00	P-110	Yes	45.98	Yes			7,286.9	10,839.39
246	237	Casing Joints	5 1/2	20.00	P-110	Yes	45.24	Yes			7,241.7	10,884.63
247	238	Casing Joints	5 1/2	20.00	P-110	Yes	45.97	Yes			7,195.7	10,930.60
248	239	Casing Joints	5 1/2	20.00	P-110	Yes	45.96	Yes			7,149.8	10,976.56
249	240	Casing Joints	5 1/2	20.00	P-110	Yes	45.96	Yes			7,103.8	11,022.52
250	241	Casing Joints	5 1/2	20.00	P-110	Yes	45.68	Yes			7,058.1	11,068.20
251	242	Casing Joints	5 1/2	20.00	P-110	Yes	46.00	Yes			7,012.1	11,114.20
252	243	Casing Joints	5 1/2	20.00	P-110	Yes	45.22	Yes			6,966.9	11,159.42
253	244	Casing Joints	5 1/2	20.00	P-110	Yes	45.94	Yes			6,921.0	11,205.36
254	245	Casing Joints	5 1/2	20.00	P-110	Yes	45.87	Yes			6,875.1	11,251.23
255	246	Casing Joints	5 1/2	20.00	P-110	Yes	45.51	Yes			6,829.6	11,296.74
256		Marker Joint E	5 1/2	20.00	P-110	Yes	11.75	Yes			6,817.8	11,308.49
257	247	Casing Joints	5 1/2	20.00	P-110	Yes	44.77	Yes			6,773.1	11,353.26
258	248	Casing Joints	5 1/2	20.00	P-110	Yes	45.95	Yes			6,727.1	11,399.21
259	249	Casing Joints	5 1/2	20.00	P-110	Yes	45.96	Yes			6,681.2	11,445.17
260	250	Casing Joints	5 1/2	20.00	P-110	Yes	44.65	Yes			6,636.5	11,489.82
261	251	Casing Joints	5 1/2	20.00	P-110	Yes	39.96	Yes			6,596.6	11,529.78
262	252	Casing Joints	5 1/2	20.00	P-110	Yes	43.24	Yes			6,553.3	11,573.02
263	253	Casing Joints	5 1/2	20.00	P-110	Yes	45.67	Yes			6,507.6	11,618.69
264	254	Casing Joints	5 1/2	20.00	P-110	Yes	45.91	Yes			6,461.7	11,664.60
265	255	Casing Joints	5 1/2	20.00	P-110	Yes	46.24	Yes			6,415.5	11,710.84
266	256	Casing Joints	5 1/2	20.00	P-110	Yes	46.22	Yes			6,369.3	11,757.06
267	257	Casing Joints	5 1/2	20.00	P-110	Yes	45.75	Yes			6,323.5	11,802.81
268	258	Casing Joints	5 1/2	20.00	P-110	Yes	47.11	Yes			6,276.4	11,849.92
269	259	Casing Joints	5 1/2	20.00	P-110	Yes	45.59	Yes			6,230.8	11,895.51
270	260	Casing Joints	5 1/2	20.00	P-110	Yes	45.84	Yes			6,185.0	11,941.35
271	261	Casing Joints	5 1/2	20.00	P-110	Yes	45.96	Yes			6,139.0	11,987.31
272	262	Casing Joints	5 1/2	20.00	P-110	Yes	45.90	Yes			6,093.1	12,033.21



## Centralizer Depths

**Well Name: Everest 03N**

**Production, Set Depth: 18,155.0ftKB**

API 05123516700000		Surface Legal Location NWNE 34 6N 66W		Field Name Wattenberg		State CO		Well Configuration Type Horizontal			
Ground Elevation (ft) 4,697.00	Original KB Elevation (ft) 4,725.00	KB-Ground Distance (ft) 28.00	Spud Date 6/23/2022 08:30	Rig Release Date 6/27/2022 11:45	On Production Date	Abandon Date					

### Casing Run Tally

Run #	Ref #	Item Des	OD (in)	Wt (lb/ft)	Grade	Run?	Len (ft)	Centralized?	Ext Jwry	Connections	Top (ftKB)	Cum Len (ft)
273	263	Casing Joints	5 1/2	20.00	P-110	Yes	45.99	Yes			6,047.1	12,079.20
274	264	Casing Joints	5 1/2	20.00	P-110	Yes	45.97	Yes			6,001.2	12,125.17
275	265	Casing Joints	5 1/2	20.00	P-110	Yes	46.16	Yes			5,955.0	12,171.33
276	266	Casing Joints	5 1/2	20.00	P-110	Yes	45.98	Yes			5,909.0	12,217.31
277	267	Casing Joints	5 1/2	20.00	P-110	Yes	45.92	Yes			5,863.1	12,263.23
278	268	Casing Joints	5 1/2	20.00	P-110	Yes	45.96	Yes			5,817.1	12,309.19
279	269	Casing Joints	5 1/2	20.00	P-110	Yes	45.90	Yes			5,771.2	12,355.09
280	270	Casing Joints	5 1/2	20.00	P-110	Yes	45.89	Yes			5,725.4	12,400.98
281	271	Casing Joints	5 1/2	20.00	P-110	Yes	45.97	Yes			5,679.4	12,446.95
282	272	Casing Joints	5 1/2	20.00	P-110	Yes	45.86	Yes			5,633.5	12,492.81
283	273	Casing Joints	5 1/2	20.00	P-110	Yes	45.96	Yes			5,587.6	12,538.77
284	274	Casing Joints	5 1/2	20.00	P-110	Yes	45.97	Yes			5,541.6	12,584.74
285	275	Casing Joints	5 1/2	20.00	P-110	Yes	42.75	Yes			5,498.8	12,627.49
286	276	Casing Joints	5 1/2	20.00	P-110	Yes	45.90	Yes			5,452.9	12,673.39
287	277	Casing Joints	5 1/2	20.00	P-110	Yes	46.09	Yes			5,406.9	12,719.48
288	278	Casing Joints	5 1/2	20.00	P-110	Yes	45.96	Yes			5,360.9	12,765.44
289	279	Casing Joints	5 1/2	20.00	P-110	Yes	45.52	Yes			5,315.4	12,810.96
290	280	Casing Joints	5 1/2	20.00	P-110	Yes	45.91	Yes			5,269.5	12,856.87
291	281	Casing Joints	5 1/2	20.00	P-110	Yes	45.97	Yes			5,223.5	12,902.84
292	282	Casing Joints	5 1/2	20.00	P-110	Yes	45.88	Yes			5,177.6	12,948.72
293	283	Casing Joints	5 1/2	20.00	P-110	Yes	41.25	Yes			5,136.4	12,989.97
294	284	Casing Joints	5 1/2	20.00	P-110	Yes	46.21	Yes			5,090.2	13,036.18
295	285	Casing Joints	5 1/2	20.00	P-110	Yes	45.89	Yes			5,044.3	13,082.07
296	286	Casing Joints	5 1/2	20.00	P-110	Yes	45.45	Yes			4,998.8	13,127.52
297	287	Casing Joints	5 1/2	20.00	P-110	Yes	44.49	Yes			4,954.3	13,172.01
298	288	Casing Joints	5 1/2	20.00	P-110	Yes	45.87	Yes			4,908.5	13,217.88
299	289	Casing Joints	5 1/2	20.00	P-110	Yes	44.84	Yes			4,863.6	13,262.72
300	290	Casing Joints	5 1/2	20.00	P-110	Yes	44.48	Yes			4,819.1	13,307.20
301	291	Casing Joints	5 1/2	20.00	P-110	Yes	45.43	Yes			4,773.7	13,352.63
302	292	Casing Joints	5 1/2	20.00	P-110	Yes	45.88	Yes			4,727.8	13,398.51
303	293	Casing Joints	5 1/2	20.00	P-110	Yes	45.61	Yes			4,682.2	13,444.12



## Centralizer Depths

**Well Name: Everest 03N**

**Production, Set Depth: 18,155.0ftKB**

API 0512351670000		Surface Legal Location NWNE 34 6N 66W		Field Name Wattenberg		State CO		Well Configuration Type Horizontal			
Ground Elevation (ft) 4,697.00	Original KB Elevation (ft) 4,725.00	KB-Ground Distance (ft) 28.00	Spud Date 6/23/2022 08:30	Rig Release Date 6/27/2022 11:45	On Production Date	Abandon Date					

### Casing Run Tally

Run #	Ref #	Item Des	OD (in)	Wt (lb/ft)	Grade	Run?	Len (ft)	Centralized?	Ext Jwry	Connections	Top (ftKB)	Cum Len (ft)
304	294	Casing Joints	5 1/2	20.00	P-110	Yes	44.25	Yes			4,638.0	13,488.37
305	295	Casing Joints	5 1/2	20.00	P-110	Yes	45.89	Yes			4,592.1	13,534.26
306	296	Casing Joints	5 1/2	20.00	P-110	Yes	45.95	Yes			4,546.1	13,580.21
307	297	Casing Joints	5 1/2	20.00	P-110	Yes	45.91	Yes			4,500.2	13,626.12
308	298	Casing Joints	5 1/2	20.00	P-110	Yes	47.12	Yes			4,453.1	13,673.24
309	299	Casing Joints	5 1/2	20.00	P-110	Yes	46.03	Yes			4,407.1	13,719.27
310	300	Casing Joints	5 1/2	20.00	P-110	Yes	47.12	Yes			4,359.9	13,766.39
311	301	Casing Joints	5 1/2	20.00	P-110	Yes	46.22	Yes			4,313.7	13,812.61
312	302	Casing Joints	5 1/2	20.00	P-110	Yes	46.58	Yes			4,267.1	13,859.19
313	303	Casing Joints	5 1/2	20.00	P-110	Yes	45.93	Yes			4,221.2	13,905.12
314	304	Casing Joints	5 1/2	20.00	P-110	Yes	45.84	Yes			4,175.4	13,950.96
315	305	Casing Joints	5 1/2	20.00	P-110	Yes	46.14	Yes			4,129.2	13,997.10
316	306	Casing Joints	5 1/2	20.00	P-110	Yes	47.14	Yes			4,082.1	14,044.24
317	307	Casing Joints	5 1/2	20.00	P-110	Yes	45.72	Yes			4,036.4	14,089.96
318	308	Casing Joints	5 1/2	20.00	P-110	Yes	45.94	Yes			3,990.4	14,135.90
319	309	Casing Joints	5 1/2	20.00	P-110	Yes	47.09	Yes			3,943.3	14,182.99
320	310	Casing Joints	5 1/2	20.00	P-110	Yes	45.28	Yes			3,898.1	14,228.27
321	311	Casing Joints	5 1/2	20.00	P-110	Yes	44.69	Yes			3,853.4	14,272.96
322	312	Casing Joints	5 1/2	20.00	P-110	Yes	45.68	Yes			3,807.7	14,318.64
323	313	Casing Joints	5 1/2	20.00	P-110	Yes	43.66	Yes			3,764.0	14,362.30
324	314	Casing Joints	5 1/2	20.00	P-110	Yes	46.44	Yes			3,717.6	14,408.74
325	315	Casing Joints	5 1/2	20.00	P-110	Yes	46.46	Yes			3,671.1	14,455.20
326	316	Casing Joints	5 1/2	20.00	P-110	Yes	40.99	Yes			3,630.1	14,496.19
327	317	Casing Joints	5 1/2	20.00	P-110	Yes	46.41	Yes			3,583.7	14,542.60
328	318	Casing Joints	5 1/2	20.00	P-110	Yes	42.30	Yes			3,541.4	14,584.90
329	319	Casing Joints	5 1/2	20.00	P-110	Yes	45.96	Yes			3,495.5	14,630.86
330	320	Casing Joints	5 1/2	20.00	P-110	Yes	45.84	Yes			3,449.6	14,676.70
331	321	Casing Joints	5 1/2	20.00	P-110	Yes	44.19	Yes			3,405.4	14,720.89
332	322	Casing Joints	5 1/2	20.00	P-110	Yes	45.33	Yes			3,360.1	14,766.22
333	323	Casing Joints	5 1/2	20.00	P-110	Yes	47.11	Yes			3,313.0	14,813.33
334	324	Casing Joints	5 1/2	20.00	P-110	Yes	45.96	Yes			3,267.0	14,859.29



## Centralizer Depths

**Well Name: Everest 03N**

**Production, Set Depth: 18,155.0ftKB**

API 0512351670000		Surface Legal Location NWNE 34 6N 66W		Field Name Wattenberg		State CO		Well Configuration Type Horizontal			
Ground Elevation (ft) 4,697.00		Original KB Elevation (ft) 4,725.00		KB-Ground Distance (ft) 28.00		Spud Date 6/23/2022 08:30		Rig Release Date 6/27/2022 11:45		On Production Date Abandon Date	

### Casing Run Tally

Run #	Ref #	Item Des	OD (in)	Wt (lb/ft)	Grade	Run?	Len (ft)	Centralized?	Ext Jwry	Connections	Top (ftKB)	Cum Len (ft)
335	325	Casing Joints	5 1/2	20.00	P-110	Yes	46.08	Yes			3,221.0	14,905.37
336	326	Casing Joints	5 1/2	20.00	P-110	Yes	45.56	Yes			3,175.4	14,950.93
337	327	Casing Joints	5 1/2	20.00	P-110	Yes	45.90	Yes			3,129.5	14,996.83
338	328	Casing Joints	5 1/2	20.00	P-110	Yes	45.88	Yes			3,083.6	15,042.71
339	329	Casing Joints	5 1/2	20.00	P-110	Yes	46.35	Yes			3,037.3	15,089.06
340	330	Casing Joints	5 1/2	20.00	P-110	Yes	46.00	Yes			2,991.3	15,135.06
341	331	Casing Joints	5 1/2	20.00	P-110	Yes	44.24	Yes			2,947.0	15,179.30
343	332	Casing Joints	5 1/2	20.00	P-110	Yes	45.89	Yes			-46.6	15,240.29
344	333	Casing Joints	5 1/2	20.00	P-110	Yes	45.56	Yes			-92.1	15,285.85
345	334	Casing Joints	5 1/2	20.00	P-110	Yes	45.95	Yes			-138.1	15,331.80
346	335	Casing Joints	5 1/2	20.00	P-110	Yes	45.18	Yes			-183.3	15,376.98
347	336	Casing Joints	5 1/2	20.00	P-110	Yes	45.30	Yes			-228.6	15,422.28
348	337	Casing Joints	5 1/2	20.00	P-110	Yes	45.33	Yes			-273.9	15,467.61
349	338	Casing Joints	5 1/2	20.00	P-110	Yes	45.61	Yes			-319.5	15,513.22
350	339	Casing Joints	5 1/2	20.00	P-110	Yes	45.32	Yes			-364.8	15,558.54
351	340	Casing Joints	5 1/2	20.00	P-110	Yes	44.24	Yes			-409.1	15,602.78
352	341	Casing Joints	5 1/2	20.00	P-110	Yes	45.76	Yes			-454.8	15,648.54
353	342	Casing Joints	5 1/2	20.00	P-110	Yes	46.00	Yes			-500.8	15,694.54
354	343	Casing Joints	5 1/2	20.00	P-110	Yes	46.03	Yes			-546.8	15,740.57
355	344	Casing Joints	5 1/2	20.00	P-110	Yes	45.88	Yes			-592.7	15,786.45
356	345	Casing Joints	5 1/2	20.00	P-110	Yes	44.50	Yes			-637.2	15,830.95
357	346	Casing Joints	5 1/2	20.00	P-110	Yes	46.09	Yes			-683.3	15,877.04
358	347	Casing Joints	5 1/2	20.00	P-110	Yes	45.88	Yes			-729.2	15,922.92
359	348	Casing Joints	5 1/2	20.00	P-110	Yes	45.96	Yes			-775.2	15,968.88
360	349	Casing Joints	5 1/2	20.00	P-110	Yes	45.19	Yes			-820.3	16,014.07
361	350	Casing Joints	5 1/2	20.00	P-110	Yes	45.97	Yes			-866.3	16,060.04
362	351	Casing Joints	5 1/2	20.00	P-110	Yes	46.59	Yes			-912.9	16,106.63
363	352	Casing Joints	5 1/2	20.00	P-110	Yes	45.51	Yes			-958.4	16,152.14
364	353	Casing Joints	5 1/2	20.00	P-110	Yes	44.76	Yes			-1,003.2	16,196.90
365	354	Casing Joints	5 1/2	20.00	P-110	Yes	45.52	Yes			-1,048.7	16,242.42
366	355	Casing Joints	5 1/2	20.00	P-110	Yes	46.89	Yes			-1,095.6	16,289.31



## Centralizer Depths

**Well Name: Everest 03N**

**Production, Set Depth: 18,155.0ftKB**

API 0512351670000		Surface Legal Location NWNE 34 6N 66W		Field Name Wattenberg		State CO		Well Configuration Type Horizontal			
Ground Elevation (ft) 4,697.00		Original KB Elevation (ft) 4,725.00		KB-Ground Distance (ft) 28.00		Spud Date 6/23/2022 08:30		Rig Release Date 6/27/2022 11:45		On Production Date Abandon Date	

### Casing Run Tally

Run #	Ref #	Item Des	OD (in)	Wt (lb/ft)	Grade	Run?	Len (ft)	Centralized?	Ext Jwry	Connections	Top (ftKB)	Cum Len (ft)
367	356	Casing Joints	5 1/2	20.00	P-110	Yes	42.85	Yes			-1,138.4	16,332.16
368	357	Casing Joints	5 1/2	20.00	P-110	Yes	47.11	Yes			-1,185.5	16,379.27
369	358	Casing Joints	5 1/2	20.00	P-110	Yes	42.04	Yes			-1,227.6	16,421.31
370	359	Casing Joints	5 1/2	20.00	P-110	Yes	47.13	Yes			-1,274.7	16,468.44
371	360	Casing Joints	5 1/2	20.00	P-110	Yes	42.35	Yes			-1,317.1	16,510.79
372	361	Casing Joints	5 1/2	20.00	P-110	Yes	45.41	Yes			-1,362.5	16,556.20
373	362	Casing Joints	5 1/2	20.00	P-110	Yes	43.10	Yes			-1,405.6	16,599.30
374	363	Casing Joints	5 1/2	20.00	P-110	Yes	45.02	Yes			-1,450.6	16,644.32
375	364	Casing Joints	5 1/2	20.00	P-110	Yes	47.06	Yes			-1,497.7	16,691.38
376	365	Casing Joints	5 1/2	20.00	P-110	Yes	47.11	Yes			-1,544.8	16,738.49
377	366	Casing Joints	5 1/2	20.00	P-110	Yes	45.48	Yes			-1,590.2	16,783.97
378	367	Casing Joints	5 1/2	20.00	P-110	Yes	46.22	Yes			-1,636.5	16,830.19
379	368	Casing Joints	5 1/2	20.00	P-110	Yes	45.54	Yes			-1,682.0	16,875.73
380	369	Casing Joints	5 1/2	20.00	P-110	Yes	47.12	Yes			-1,729.1	16,922.85
381	370	Casing Joints	5 1/2	20.00	P-110	Yes	45.97	Yes			-1,775.1	16,968.82
382	371	Casing Joints	5 1/2	20.00	P-110	Yes	47.12	Yes			-1,822.2	17,015.94
383	372	Casing Joints	5 1/2	20.00	P-110	Yes	44.98	Yes			-1,867.2	17,060.92
384	373	Casing Joints	5 1/2	20.00	P-110	Yes	47.12	Yes			-1,914.3	17,108.04
385	374	Casing Joints	5 1/2	20.00	P-110	Yes	46.08	Yes			-1,960.4	17,154.12
386	375	Casing Joints	5 1/2	20.00	P-110	Yes	43.81	Yes			-2,004.2	17,197.93
387	376	Casing Joints	5 1/2	20.00	P-110	Yes	46.29	Yes			-2,050.5	17,244.22
388	377	Casing Joints	5 1/2	20.00	P-110	Yes	44.73	Yes			-2,095.2	17,288.95
389	378	Casing Joints	5 1/2	20.00	P-110	Yes	43.95	Yes			-2,139.2	17,332.90
390	379	Casing Joints	5 1/2	20.00	P-110	Yes	45.81	Yes			-2,185.0	17,378.71
391	380	Casing Joints	5 1/2	20.00	P-110	Yes	47.10	Yes			-2,232.1	17,425.81
392	381	Casing Joints	5 1/2	20.00	P-110	Yes	47.11	Yes			-2,279.2	17,472.92
393	382	Casing Joints	5 1/2	20.00	P-110	Yes	47.11	Yes			-2,326.3	17,520.03
394	383	Casing Joints	5 1/2	20.00	P-110	Yes	39.75	Yes			-2,366.1	17,559.78
395	384	Casing Joints	5 1/2	20.00	P-110	Yes	45.86	Yes			-2,411.9	17,605.64
396	385	Casing Joints	5 1/2	20.00	P-110	Yes	45.89	Yes			-2,457.8	17,651.53