




Date:	September 2022
Designed By:	K.P. Kauffman Co.
Drawn By:	RMG

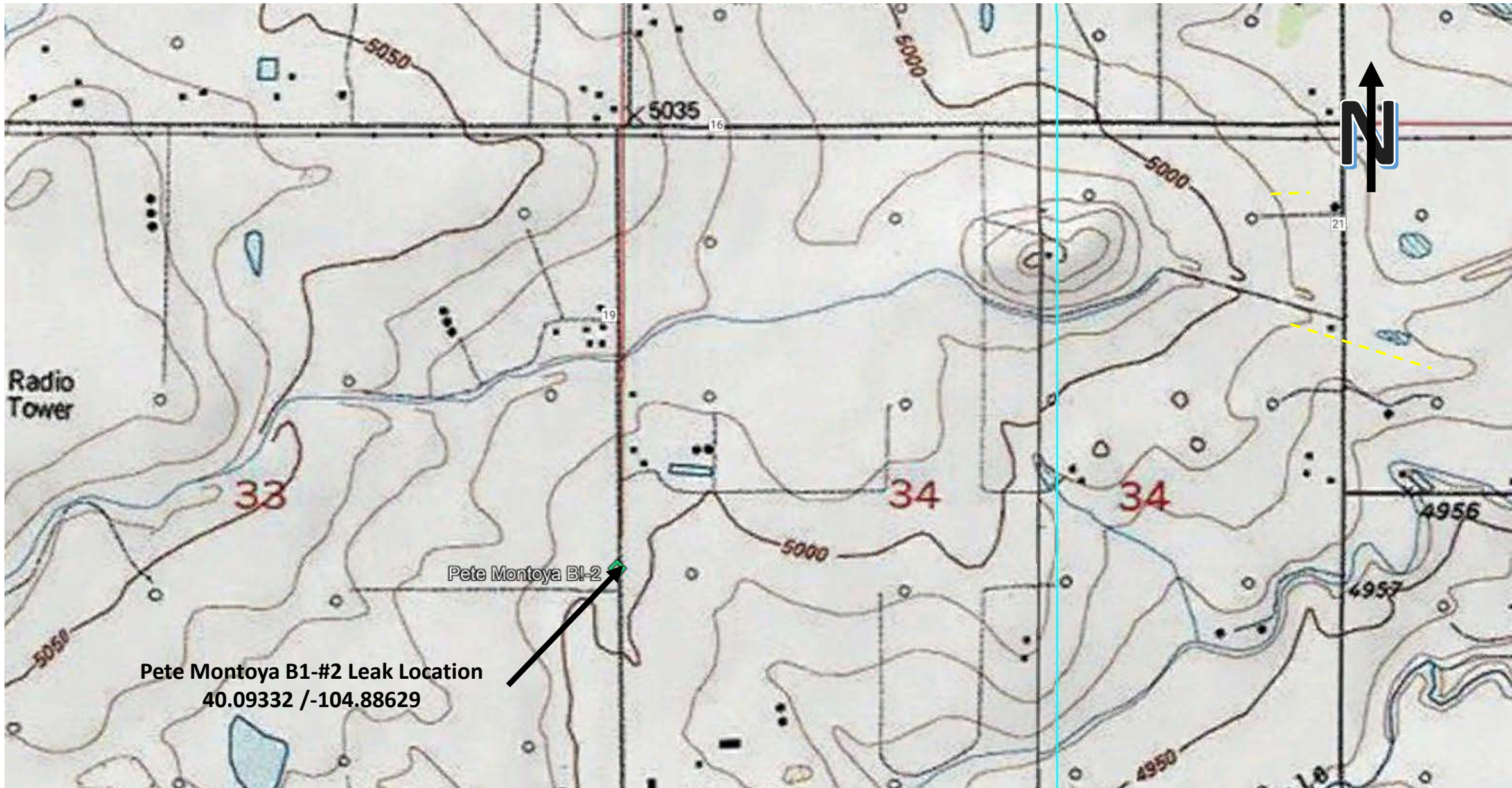
  
K.P. KAUFFMAN COMPANY, INC.

**K.P. Kauffman Co., Inc.**  
**1700 Lincoln St., #4550**  
**Denver CO, 80203**

**Pete Montoya B1-#2 Flowline Leak**  
NWSW, S34, T2N, R67W; Weld Co., CO

**Figure #1**  
Location Map





Date:	September 2022
Designed By:	K.P. Kauffman Co.
Drawn By:	RMG

  
K.P. KAUFFMAN COMPANY, INC.

**K.P. Kauffman Co., Inc.**  
1700 Lincoln St., #4550  
Denver CO, 80203

**Pete Montoya B1-#2 Flowline Leak**  
NWSW, S34, T2N, R67W; Weld Co., CO

**Figure #2**  
Topographic Map



Date:	September 2022	 K.P. KAUFFMAN COMPANY, INC.	<b>K.P. Kauffman Co., Inc.</b> 1700 Lincoln St., #4550 Denver CO, 80203	<b>Pete Montoya B1-#2 Flowline Leak</b> NWSW, S34, T2N, R67W; Weld Co., CO	<b>Figure #3</b> Government MAP
Designed By:	K.P. Kauffman Co.				
Drawn By:	RMG				