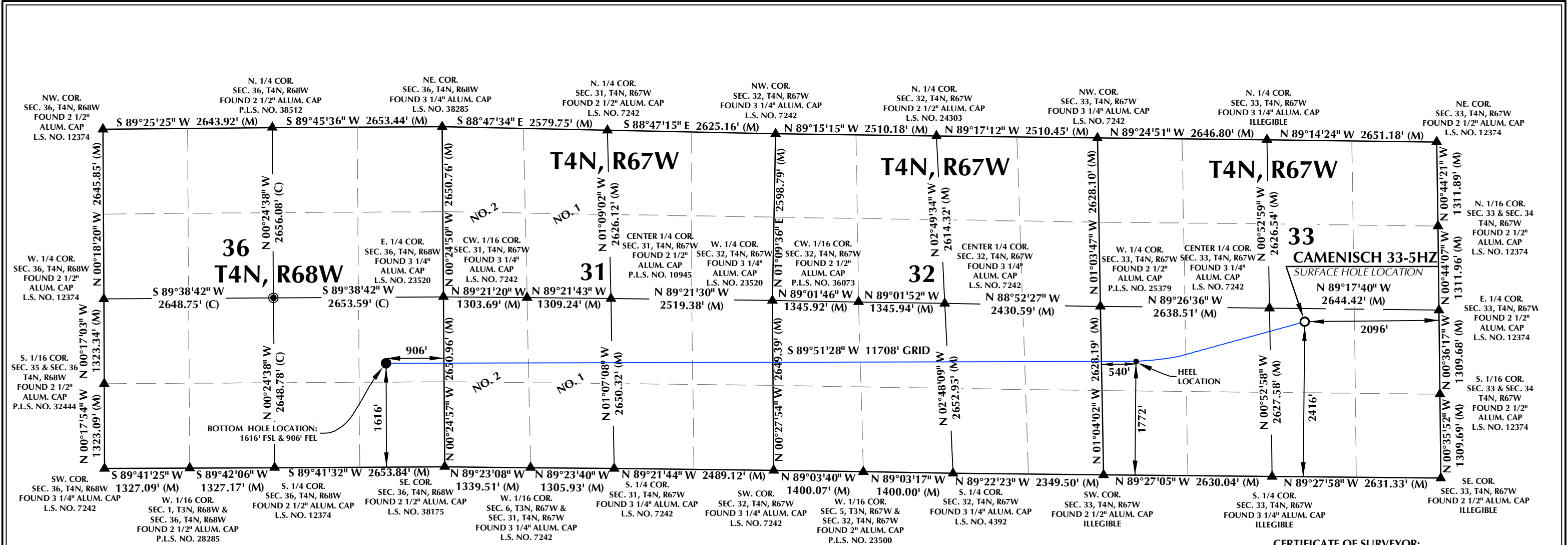


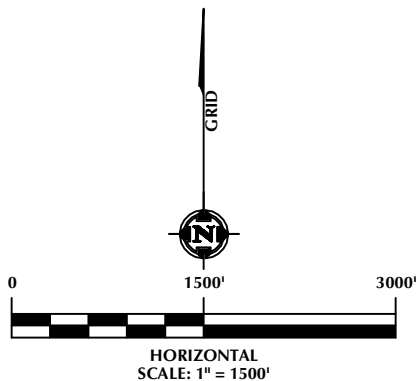
\\10.07.76\Company\WADAKNO\2017\156\_CAMENISCH\T4N\_R67W\_SEC\_33\PLATS\CAMENISCH33-5HZ.dwg, 1/12/2022 1:43:34 PM, samuel



**SURFACE HOLE LOCATION: NAD 83**  
**GROUND ELEVATION= 4869.4'**  
**LATITUDE= 40.268796°**  
**LONGITUDE= -104.893562°**  
**LATITUDE= 40°16'07.667"**  
**LONGITUDE= -104°53'36.821"**  
**HEEL LOCATION: NAD 83**  
**LATITUDE= 40.267148°**  
**LONGITUDE= -104.903009°**  
**LATITUDE= 40°16'01.733"**  
**LONGITUDE= -104°54'10.832"**  
**BOTTOM HOLE LOCATION: NAD 83**  
**LATITUDE= 40.267277°**  
**LONGITUDE= -104.944965°**  
**LATITUDE= 40°16'02.197"**  
**LONGITUDE= -104°56'41.874"**

**NOTES:**

1. INDICATES SECTION CORNER.
2. INDICATES CALCULATED CORNER.
3. ELEVATION BASED ON NAVD88 (GEOID12B).
4. BASIS OF BEARING DERIVED FROM COLORADO COORDINATE SYSTEM OF 1983, NORTH ZONE.
5. ALL MEASURED DISTANCES ARE GRID.  
COMBINED SCALE FACTOR: .99972730 CALCULATED FROM THE W. 1/4 CORNER OF SECTION 34, T4N, R67W.
6. OPERATOR: JEREMY GROVES / PDOP = 1.3.
7. WELL FOOTAGES ARE MEASURED AT RIGHT ANGLES TO THE SECTION LINES.
8. THE BOTTOM HOLE LOCATION BEARS S89°51'28"W, 11708' FROM THE HEEL LOCATION.



LOVELAND OFFICE  
6706 North Franklin Avenue  
Loveland, Colorado 80538  
Phone 970-776-4331  
  
SHERIDAN OFFICE  
1095 Saberton Avenue  
Sheridan, Wyoming 82801  
Phone 307-674-0609

**Kerr-McGee Oil &  
Gas Onshore L.P.**  
**1099 18th Street  
Denver, Colorado 80202**

**CERTIFICATE OF SURVEYOR:**

THIS IS TO CERTIFY THAT THE ABOVE PLAT WAS PREPARED FROM FIELD NOTES OF ACTUAL SURVEYS MADE BY ME OR UNDER MY SUPERVISION AND THAT THE SAME ARE TRUE AND CORRECT TO THE BEST OF MY KNOWLEDGE AND BELIEF. THIS CERTIFICATE DOES NOT REPRESENT A LAND SURVEY PLAT OR IMPROVEMENT SURVEY PLAT AS DEFINED BY C.R.S. 38-51-102 AND CANNOT BE REIED UPON TO DETERMINE OWNERSHIP.

*Randall K. French*  
RANDALL K. FRENCH  
PROFESSIONAL LAND SURVEYOR  
COLORADO REGISTRATION NO. 38512  
1/12/22

NOTICE:  
ACCORDING TO COLORADO STATE LAW YOU MUST OBTAIN A LEGAL ACTION BASED UPON ANY DEFECT IN THIS SURVEY WITHIN THREE YEARS AFTER YOU FIRST DISCOVER SUCH DEFECT. IN NO EVENT MAY ANY ACTION BASED UPON ANY DEFECT IN THIS SURVEY BE COMMENCED MORE THAN TEN YEARS FROM THE DATE ON THE CERTIFICATION SHOWN HEREON.

**WELL PAD - CAMENISCH 10-33HZ**

**CAMENISCH 33-5HZ**  
**WELL LOCATION CERTIFICATE**  
**2416' FSL & 2096' FEL (NWSE) (SURFACE HOLE LOCATION)**  
**1772' FSL & 540' FWL (NWSW) (HEEL LOCATION)**  
**LOCATED IN SECTION 33**  
**T4N, R67W, 6TH P.M.**  
**1616' FSL & 906' FEL (NESE) (BOTTOM HOLE LOCATION)**  
**LOCATED IN SECTION 36**  
**T4N, R68W, 6TH P.M.**  
**WELD COUNTY, COLORADO**

DRAFTED BY:	SJM	CHECKED BY:	RKF
DATE DRAFTED:	1/7/22	DATE SURVEYED:	12/8/21
REVISED:	1/12/22	FILE NAME:	17-156