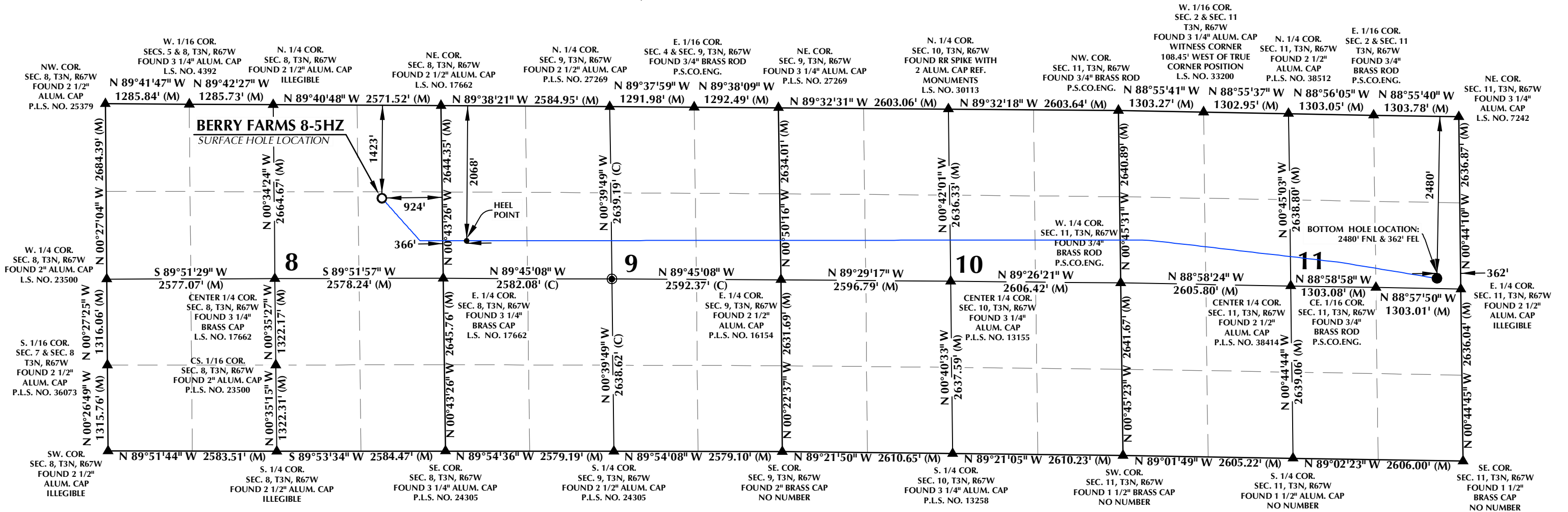
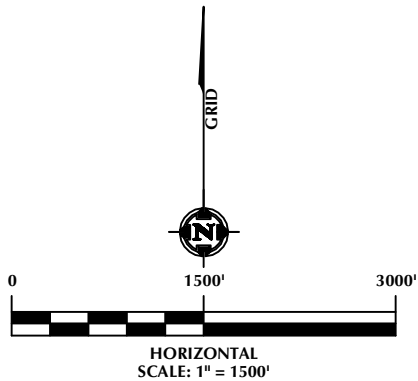


T3N, R67W



**SURFACE HOLE LOCATION: NAD 83**  
GROUND ELEVATION= 4818.5'  
LATITUDE= 40.243720°  
LONGITUDE= -104.908129°  
LATITUDE= 40°14'37.394"  
LONGITUDE= -104°54'29.263"  
**HEEL LOCATION: NAD 83**  
LATITUDE= 40.241905°  
LONGITUDE= -104.903494°  
LATITUDE= 40°14'30.858"  
LONGITUDE= -104°54'12.578"  
**BOTTOM HOLE LOCATION: NAD 83**  
LATITUDE= 40.240036°  
LONGITUDE= -104.850258°  
LATITUDE= 40°14'24.130"  
LONGITUDE= -104°51'00.929"

- NOTES:**
- ▲ INDICATES SECTION CORNER.
  - INDICATES CALCULATED CORNER.
  - ELEVATION BASED ON NAVD88 (GEOID12B).
  - BASIS OF BEARING DERIVED FROM COLORADO COORDINATE SYSTEM OF 1983, NORTH ZONE.
  - ALL MEASURED DISTANCES ARE GRID.
  - COMBINED SCALE FACTOR: .99973053 CALCULATED FROM THE E. 1/4 CORNER OF SECTION 8, T3N, R67W.
  - OPERATOR: TRAVIS HOLLAND / PDOP = 1.4.
  - WELL FOOTAGES ARE MEASURED AT RIGHT ANGLES TO THE SECTION LINES.



**CERTIFICATE OF SURVEYOR:**

THIS IS TO CERTIFY THAT THE ABOVE PLAT WAS PREPARED FROM FIELD NOTES OF ACTUAL SURVEYS MADE BY ME OR UNDER MY SUPERVISION AND THAT THE SAME ARE TRUE AND CORRECT TO THE BEST OF MY KNOWLEDGE AND BELIEF. THIS CERTIFICATE DOES NOT REPRESENT A LAND SURVEY PLAT OR IMPROVEMENT SURVEY PLAT AS DEFINED BY C.R.S. 38-51-102 AND CANNOT BE RELIED UPON TO DETERMINE OWNERSHIP.

RANDALL K. FRENCH  
PROFESSIONAL LAND SURVEYOR  
COLORADO REGISTRATION NUMBER 38512

NOTICE: ACCORDING TO COLORADO STATE LAW YOU MUST TAKE LEGAL ACTION BASED UPON ANY DEFECT IN THIS SURVEY WITHIN THREE YEARS AFTER YOU FIRST DISCOVER SUCH DEFECT. IN NO EVENT MAY ANY ACTION BASED UPON ANY DEFECT IN THIS SURVEY BE COMMENCED MORE THAN TEN YEARS FROM THE DATE ON THE CERTIFICATION SHOWN HEREON.



LOVELAND OFFICE  
6706 North Franklin Avenue  
Loveland, Colorado 80538  
Phone 970-776-4331  
  
SHERIDAN OFFICE  
1095 Saberton Avenue  
Sheridan, Wyoming 82801  
Phone 307-674-0609

**Kerr-McGee Oil &  
Gas Onshore L.P.**  
1099 18th Street  
Denver, Colorado 80202

**WELL PAD - BERRY FARMS 8-8HZ**

**BERRY FARMS 8-5HZ  
WELL LOCATION CERTIFICATE**  
1423' FNL & 924' FEL (SENE) (SURFACE HOLE LOCATION)  
LOCATED IN SECTION 8  
2068' FNL, 366' FWL (SWNW) (HEEL POINT)  
LOCATED IN SECTION 9  
2480' FNL & 362' FEL (SENE) (BOTTOM HOLE LOCATION)  
LOCATED IN SECTION 11  
T3N, R67W, 6TH P.M.  
WELD COUNTY, COLORADO

DRAFTED BY:	SJM	CHECKED BY:	RKF
DATE DRAFTED:	11/30/21	DATE SURVEYED:	12/14/20
REVISED:	1/17/22	FILE NAME:	20-11