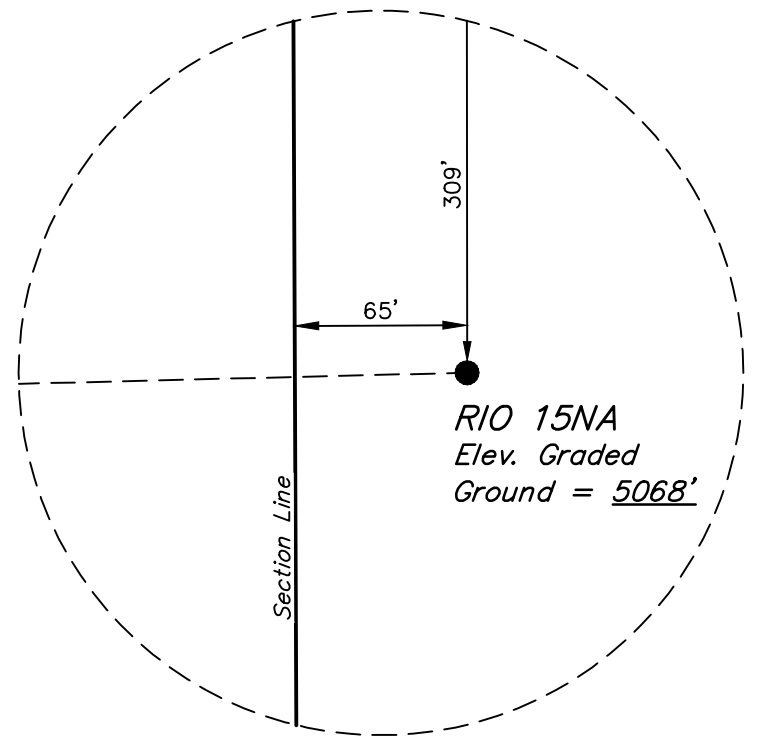
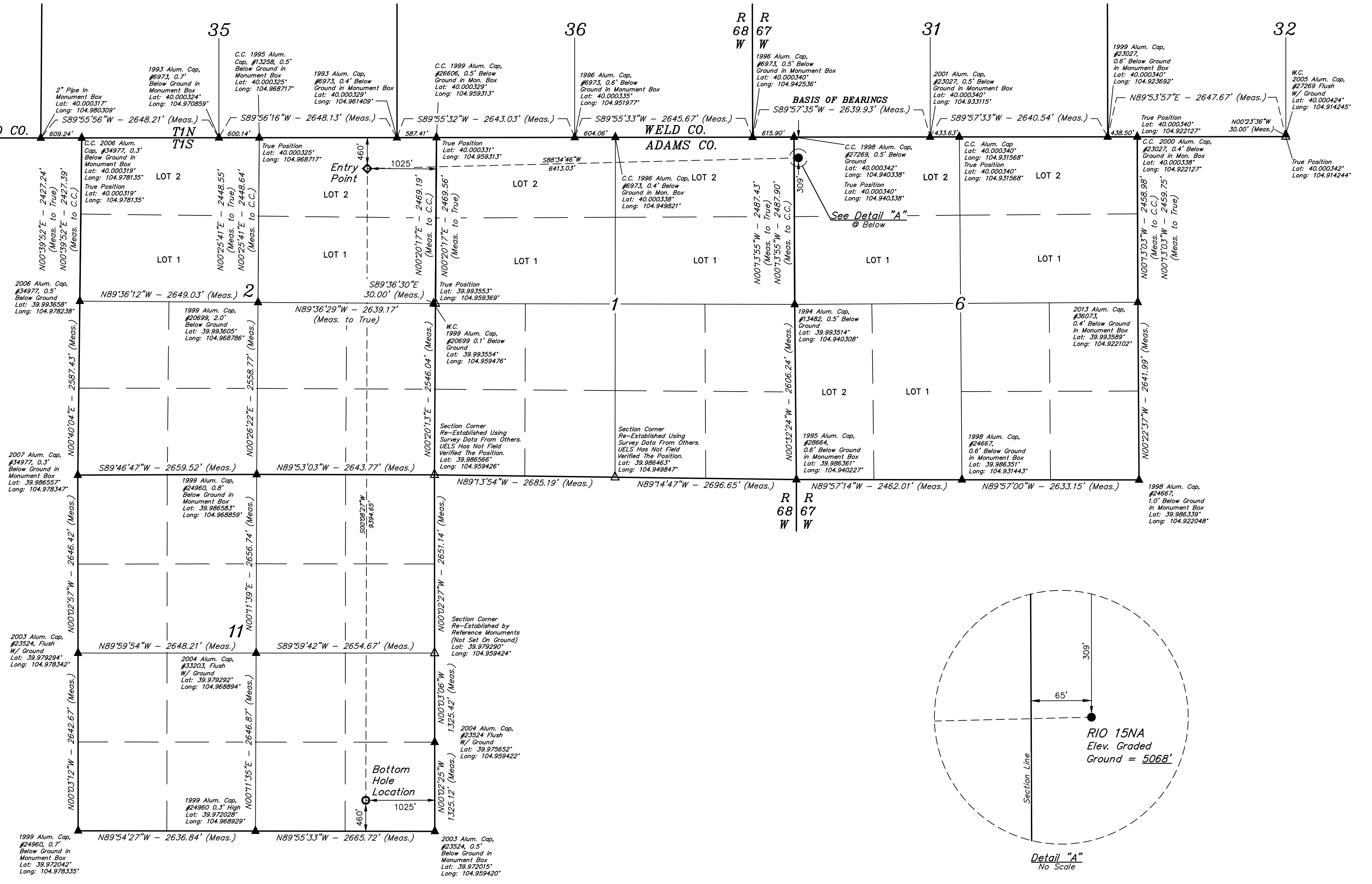


LEGEND:

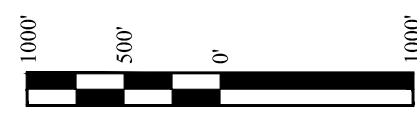
- = PROPOSED WELLHEAD.
- ◇ = ENTRY POINT.
- = BOTTOM HOLE LOCATION.
- ▲ = SECTION CORNERS LOCATED. (NAD 83)
- △ = SECTION CORNERS RE-ESTABLISHED. (Not Set on Ground.) (NAD 83)

T1S, R67W, 6th P.M.



CERTIFICATE OF RECORD
THIS IS TO CERTIFY THAT THE ABOVE IS A TRUE AND CORRECT COPY OF THE ORIGINAL SURVEY MAP AND NOTES OF ACTUAL SURVEYS MADE BY ME OR UNDER MY SUPERVISION AND THAT THE SAME ARE TRUE AND CORRECT TO THE BEST OF MY KNOWLEDGE AND BELIEF.
REGISTERED LAND SURVEYOR
RECEIVED
STATE OF COLORADO
JUL 28 2023
22

PDOP = 1.5



NAD 83 (SURFACE LOCATION)	NAD 83 (ENTRY POINT)	NAD 83 (BOTTOM HOLE LOCATION)
LATITUDE = 39°59'58.17" (39.999493°)	LATITUDE = 39°59'56.64" (39.999066°)	LATITUDE = 39°58'23.82" (39.973283°)
LONGITUDE = 104°56'24.37" (104.940103°)	LONGITUDE = 104°57'46.73" (104.962981°)	LONGITUDE = 104°57'47.08" (104.963077°)

BASIS OF ELEVATION
OPUS SOLUTION GENERATED NAVD 88.

UINTEAH
ENGINEERING & LAND SURVEYING

PDC ENERGY INC.

RIO 15NA
NW 1/4 NW 1/4, SECTION 6, T1S, R67W, 6th P.M.
ADAMS COUNTY, COLORADO

SURVEYED BY	GREG WEIMER	03-30-20	SCALE
DRAWN BY	P.M.	09-07-22	1" = 1000'

WELL LOCATION PLAT