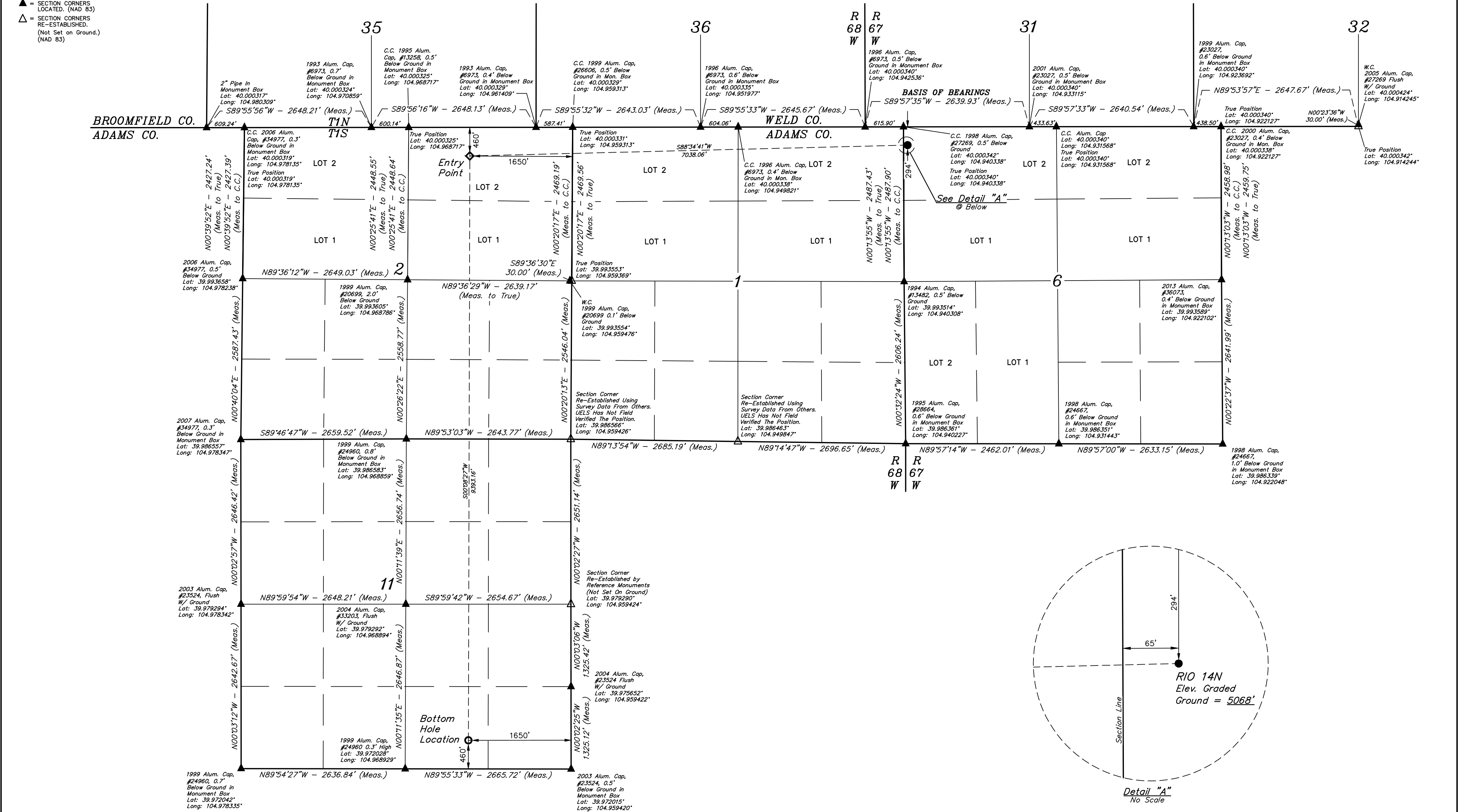


LEGEND:
● = PROPOSED WELLHEAD.
◇ = ENTRY POINT.
○ = BOTTOM HOLE LOCATION.
▲ = SECTION CORNERS LOCATED. (NAD 83)
△ = SECTION CORNERS RE-ESTABLISHED. (Not Set on Ground.) (NAD 83)

T1S, R67W, 6th P.M.



PDOP = 1.5

NAD 83 (SURFACE LOCATION)	NAD 83 (ENTRY POINT)	NAD 83 (BOTTOM HOLE LOCATION)
LATITUDE = 39°59'58.32\"	LATITUDE = 39°59'56.63\"	LATITUDE = 39°58'23.83\"
LONGITUDE = 104°56'24.37\"	LONGITUDE = 104°57'54.76\"	LONGITUDE = 104°57'55.10\"

BASIS OF ELEVATION
OPUS SOLUTION GENERATED NAVD 88.

UINTECH
ENGINEERING & LAND SURVEYING

PDC ENERGY INC.

RIO 14N
NW 1/4 NW 1/4, SECTION 6, T1S, R67W, 6th P.M.
ADAMS COUNTY, COLORADO

SURVEYED BY	MATHEW MILLER, R.W.	06-28-18	SCALE
DRAWN BY	P.M.	09-07-22	1" = 1000'

WELL LOCATION PLAT

CERTIFICATE OF RECORD
THIS IS TO CERTIFY THAT THE ABOVE PLAT IS A TRUE AND CORRECT COPY OF THE ORIGINAL SURVEY PLAT, AND THAT THE SAME ARE TRUE AND CORRECT TO THE BEST OF MY KNOWLEDGE AND BELIEF.
REGISTERED LAND SURVEYOR
RECEIVED
STATE OF COLORADO
10-09-22