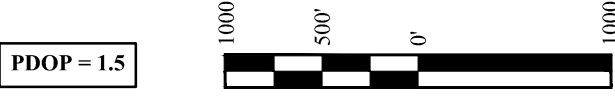
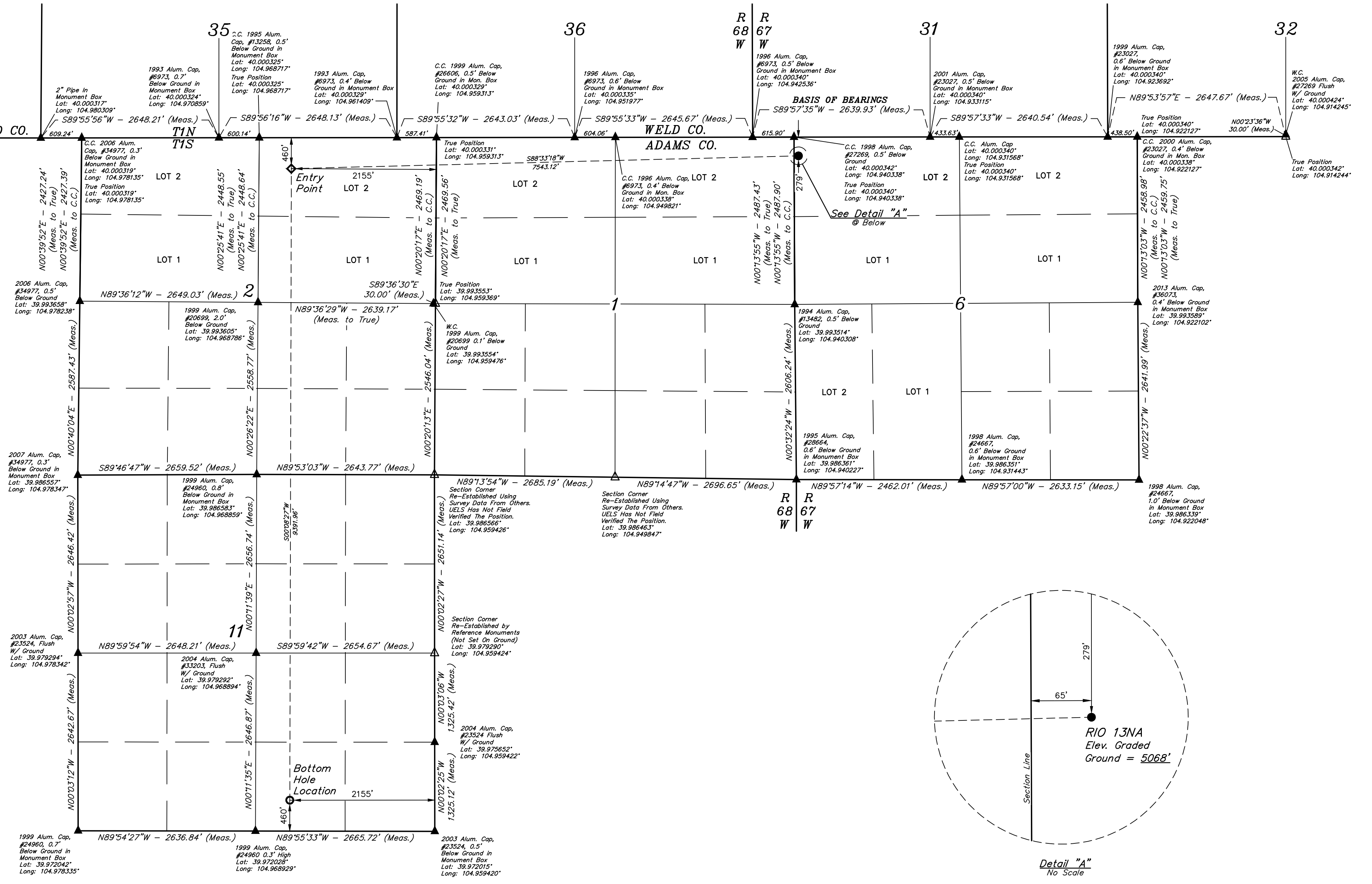


LEGEND:
● = PROPOSED WELLHEAD.
◇ = ENTRY POINT.
○ = BOTTOM HOLE LOCATION.
▲ = SECTION CORNERS LOCATED. (NAD 83)
△ = SECTION CORNERS RE-ESTABLISHED. (Not Set on Ground.) (NAD 83)

T1S, R67W, 6th P.M.



NAD 83 (SURFACE LOCATION)	NAD 83 (ENTRY POINT)	NAD 83 (BOTTOM HOLE LOCATION)
LATITUDE = 39°59'58.47" (39.999575°)	LATITUDE = 39°59'56.63" (39.999064°)	LATITUDE = 39°58'23.84" (39.973288°)
LONGITUDE = 104°56'24.37" (104.940104°)	LONGITUDE = 104°58'01.25" (104.967013°)	LONGITUDE = 104°58'01.59" (104.967108°)

UINTEAH
ENGINEERING & LAND SURVEYING

WELLS, LLC
Corporate Office * 85 South 200 East
Vernal, UT 84078 * (435) 789-1017

PDC ENERGY INC.
RIO 13NA
NW 1/4 NW 1/4, SECTION 6, T1S, R67W, 6th P.M.
ADAMS COUNTY, COLORADO

WELL LOCATION PLAT

CERTIFICATE OF SURVEY
THIS IS TO CERTIFY THAT THE ABOVE IS A TRUE AND CORRECT COPY OF THE NOTES OF ACTUAL SURVEYS MADE BY ME OR UNDER MY SUPERVISION AND THAT THE SAME ARE TRUE AND CORRECT TO THE BEST OF MY KNOWLEDGE AND BELIEF.
REGISTERED LAND SURVEYOR
RECEIVED
STATE OF COLORADO
JUL 28 2018