

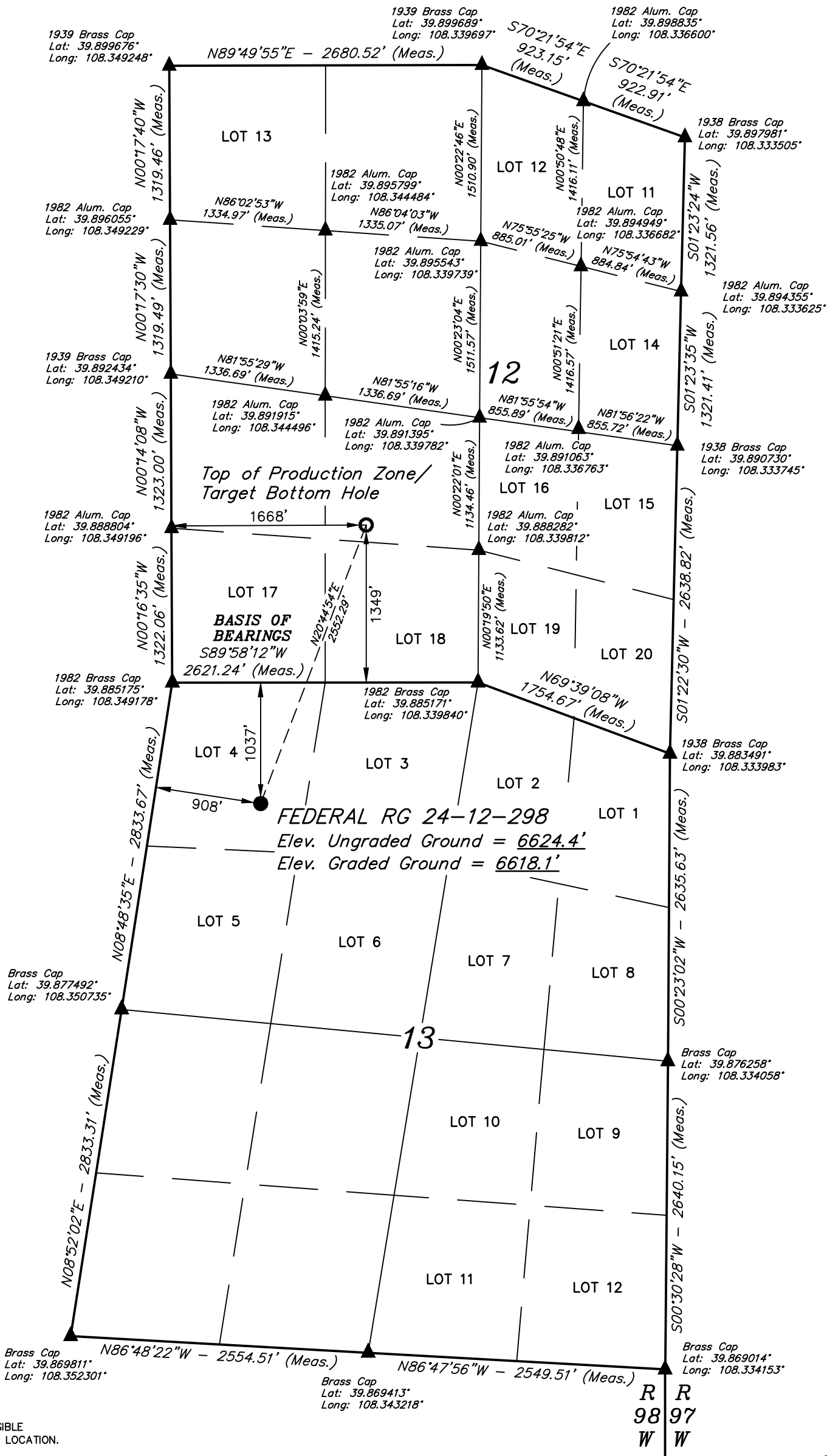
LEGEND:

- = PROPOSED WELLHEAD.
- = TOP OF PRODUCTION ZONE/
TARGET BOTTOM HOLE.
- ▲ = SECTION CORNERS
LOCATED. (NAD 83)

NOTES:

Distances referenced
on plat to section lines
are perpendicular.

T2S, R98W, 6th P.M.



NOTE:
SEE LOCATION DRAWING PLAT FOR VISIBLE
IMPROVEMENTS WITHIN 2,000' OF THIS LOCATION.



NAD 83 (SURFACE LOCATION)	NAD 83 (TPZ / TBH)
LATITUDE = 39°52'56.38" (39.882328°)	LATITUDE = 39°53'19.95" (39.888875°)
LONGITUDE = 108°20'47.34" (108.346482°)	LONGITUDE = 108°20'35.71" (108.343252°)
STATE PLANE NAD 83 (CO. NORTH)	STATE PLANE NAD 83 (CO. NORTH)
N: 1212802.51' E: 2201308.99'	N: 1215157.11' E: 2202291.63'
STATE PLANE NAD 83 (CO. CENTRAL)	STATE PLANE NAD 83 (CO. CENTRAL)
N: 1758786.42' E: 2201261.41'	N: 1761141.90' E: 2202242.29'

BASIS OF BEARINGS
BEARINGS ARE A BASED ASSUMPTION THAT THE NORTH LINE OF THE NORTHWEST 1/4 OF
SECTION 13 BEARS S89°58'12"W. MONUMENTS DESCRIBED HEREON.

BASIS OF ELEVATION
BENCH MARK (M25) LOCATED IN THE NE 1/4 OF SECTION 25, T2S, R99W, 6th P.M., TAKEN
FROM THE YANKEE GULCH QUADRANGLE, COLORADO, RIO BLANCO COUNTY, 7.5 MINUTE
QUAD. (TOPOGRAPHIC MAP) PUBLISHED BY THE UNITED STATES DEPARTMENT OF THE
INTERIOR, GEOLOGICAL SURVEY. SAID ELEVATION IS MARKED AS BEING 6971 FEET.



UELS, LLC
Corporate Office * 85 South 200 East
Vernal, UT 84078 * (435) 789-1017



CERTIFICATE
THIS IS TO CERTIFY THAT THE ABOVE PLAT WAS PREPARED AND
LOCATION AS SHOWN WAS STAKED ON THE GROUND FROM FIELD NOTES
OF ACTUAL SURVEYS MADE BY ME OR UNDER MY SUPERVISION AND THAT
THE SAME ARE TRUE AND CORRECT TO THE BEST OF MY KNOWLEDGE AND
BELIEF.

REGISTERED LAND SURVEYOR
REGISTRATION NO. 10110
STATE OF COLORADO 04-05-22

REV: 3 04-05-22 M.D. (ADD TPZ)

TEP Rocky Mountain LLC

FEDERAL RG 24-12-298
LOT 4, SECTION 13, T2S, R98W, 6th P.M.
RIO BLANCO COUNTY, COLORADO

SURVEYED BY	BART HUNTING	07-21-21	SCALE
DRAWN BY	T.L.L.	09-28-21	1" = 1000'

WELL LOCATION PLAT