

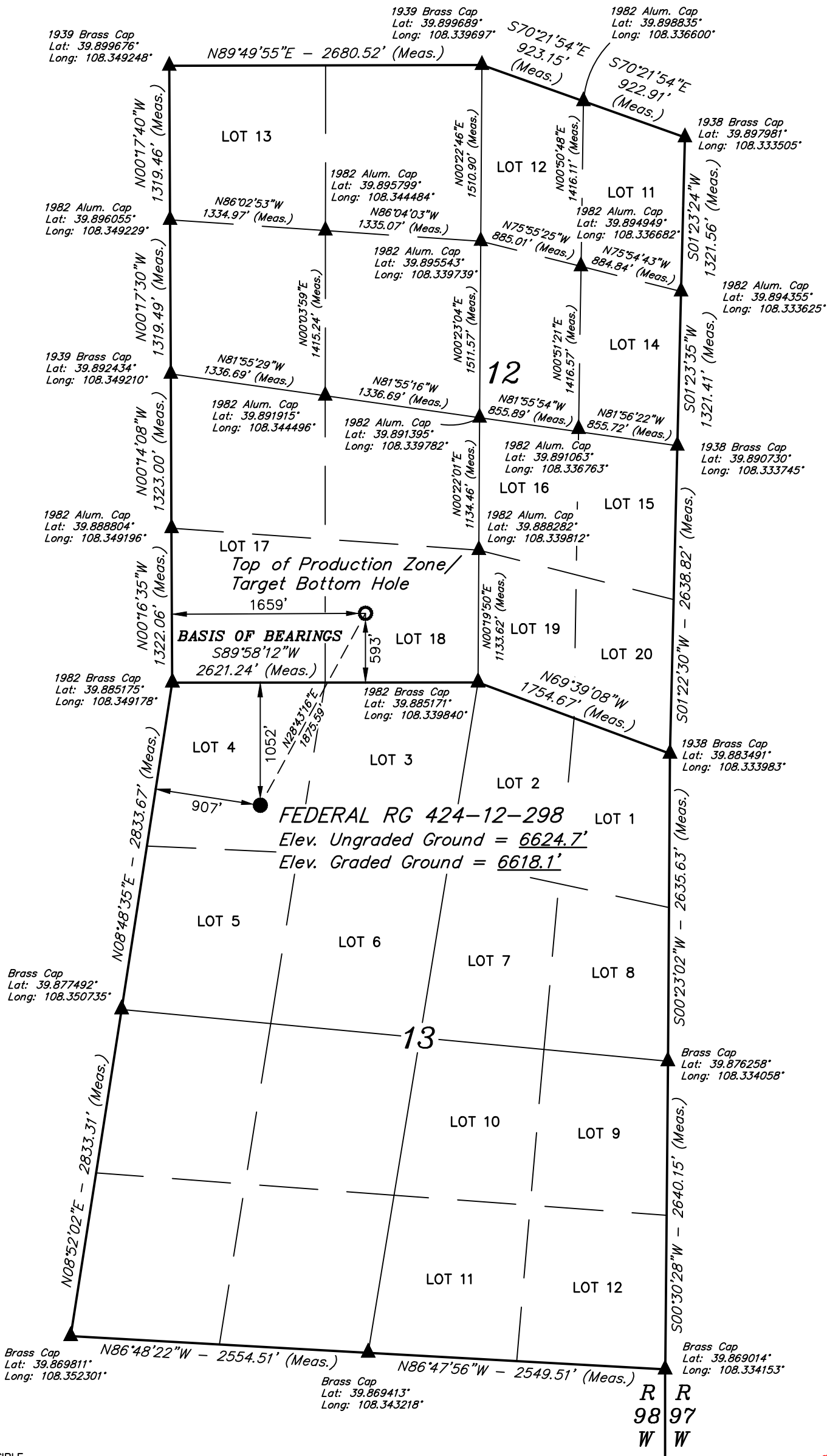
LEGEND:

- = PROPOSED WELLHEAD.
- = TOP OF PRODUCTION ZONE/ TARGET BOTTOM HOLE.
- ▲ = SECTION CORNERS LOCATED. (NAD 83)

NOTES:

Distances referenced on plat to section lines are perpendicular.

T2S, R98W, 6th P.M.



NOTE:  
SEE LOCATION DRAWING PLAT FOR VISIBLE IMPROVEMENTS WITHIN 2,000' OF THIS LOCATION.



| NAD 83 (SURFACE LOCATION)        | NAD 83 (TPZ / TBH)               |
|----------------------------------|----------------------------------|
| LATITUDE = 39°52'56.24\"         | LATITUDE = 39°53'12.48\"         |
| LONGITUDE = 108°20'47.38\"       | LONGITUDE = 108°20'35.79\"       |
| STATE PLANE NAD 83 (CO. NORTH)   | STATE PLANE NAD 83 (CO. NORTH)   |
| N: 1212787.95' E: 2201305.42'    | N: 1214401.38' E: 2202260.54'    |
| STATE PLANE NAD 83 (CO. CENTRAL) | STATE PLANE NAD 83 (CO. CENTRAL) |
| N: 1758771.86' E: 2201257.84'    | N: 1760386.11' E: 2202211.78'    |

**BASIS OF BEARINGS**  
BEARINGS ARE A BASED ASSUMPTION THAT THE NORTH LINE OF THE NORTHWEST 1/4 OF SECTION 13 BEARS S89°58'12\"W. MONUMENTS DESCRIBED HEREON.

**BASIS OF ELEVATION**  
BENCH MARK (M25) LOCATED IN THE NE 1/4 OF SECTION 25, T2S, R99W, 6th P.M., TAKEN FROM THE YANKEE GULCH QUADRANGLE, COLORADO, RIO BLANCO COUNTY, 7.5 MINUTE QUAD. (TOPOGRAPHIC MAP) PUBLISHED BY THE UNITED STATES DEPARTMENT OF THE INTERIOR, GEOLOGICAL SURVEY. SAID ELEVATION IS MARKED AS BEING 6971 FEET.



**UELS, LLC**  
Corporate Office \* 85 South 200 East  
Vernal, UT 84078 \* (435) 789-1017



**CERTIFICATE**  
THIS IS TO CERTIFY THAT THE ABOVE PLAT WAS PREPARED AND LOCATION AS SHOWN WAS STAKED ON THE GROUND FROM FIELD NOTES OF ACTUAL SURVEYS MADE BY ME OR UNDER MY SUPERVISION AND THAT THE SAME ARE TRUE AND CORRECT TO THE BEST OF MY KNOWLEDGE AND BELIEF.  
*Harold Marshall*  
REGISTERED LAND SURVEYOR  
REGISTRATION NO. 38130  
STATE OF COLORADO 04-05-22

**TEP Rocky Mountain LLC**

**FEDERAL RG 424-12-298**  
**LOT 4, SECTION 13, T2S, R98W, 6th P.M.**  
**RIO BLANCO COUNTY, COLORADO**

|             |              |          |            |
|-------------|--------------|----------|------------|
| SURVEYED BY | BART HUNTING | 07-21-21 | SCALE      |
| DRAWN BY    | T.L.L.       | 09-28-21 | 1" = 1000' |

**WELL LOCATION PLAT**

REV: 3 04-05-22 M.D. (ADD TPZ)