

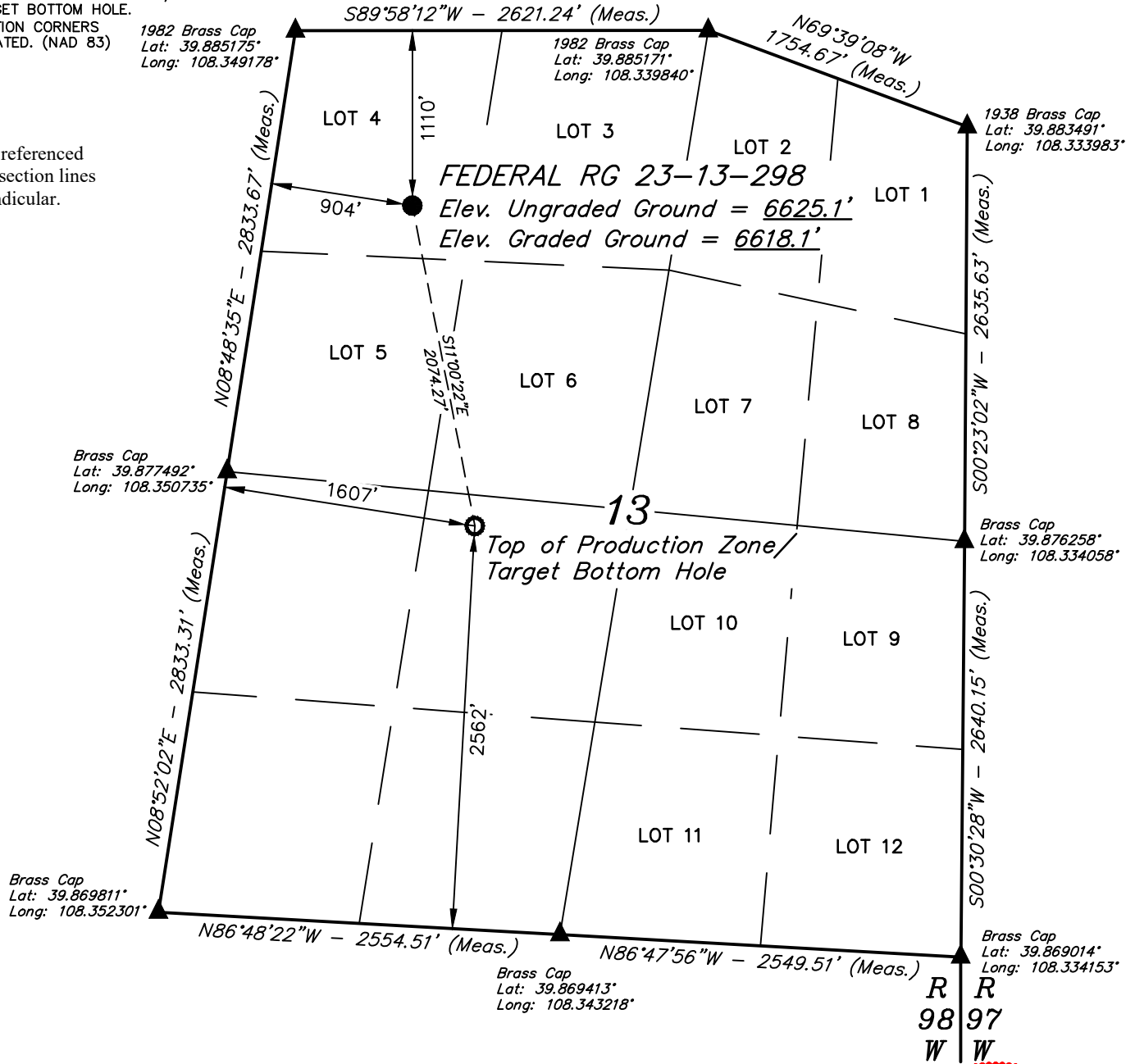
LEGEND:

- = PROPOSED WELLHEAD.
 ○ = TOP OF PRODUCTION ZONE/
 TARGET BOTTOM HOLE.
 ▲ = SECTION CORNERS
 LOCATED. (NAD 83)

NOTES:

Distances referenced
 on plat to section lines
 are perpendicular.

T2S, R98W, 6th P.M.

BASIS OF BEARINGS

NOTE:
 SEE LOCATION DRAWING PLAT FOR VISIBLE
 IMPROVEMENTS WITHIN 2,000' OF THIS LOCATION.

PDOP = 1.4



NAD 83 (SURFACE LOCATION)	NAD 83 (TPZ / TBH)
LATITUDE = 39°52'55.66" (39.882127°)	LATITUDE = 39°52'35.54" (39.876538°)
LONGITUDE = 108°20'47.54" (108.346538°)	LONGITUDE = 108°20'42.49" (108.345135°)
STATE PLANE NAD 83 (CO. NORTH)	STATE PLANE NAD 83 (CO. NORTH)
N: 1212729.70' E: 2201291.11'	N: 1210682.26' E: 2201619.15'
STATE PLANE NAD 83 (CO. CENTRAL)	STATE PLANE NAD 83 (CO. CENTRAL)
N: 1758713.60' E: 2201243.58'	N: 1756666.30' E: 2201573.20'

CERTIFICATE

THIS IS TO CERTIFY THAT THE ABOVE PLAT WAS PREPARED AND
 LOCATION AS SHOWN WAS STAKED ON THE GROUND FROM FIELD NOTES
 OF ACTUAL SURVEYS MADE BY ME OR UNDER MY SUPERVISION AND THAT
 THE SAME ARE TRUE AND CORRECT TO THE BEST OF MY KNOWLEDGE AND
 BELIEF.

REGISTERED LAND SURVEYOR
 REGISTRATION # 38130
 STATE OF COLORADO 04-05-22

REV: 3 04-05-22 M.D. (ADD TPZ)

BASIS OF BEARINGS

BEARINGS ARE A BASED ASSUMPTION THAT THE NORTH LINE OF THE NORTHWEST 1/4 OF
 SECTION 13 BEARS S89°58'12"W. MONUMENTS DESCRIBED HEREON.

BASIS OF ELEVATION

BENCH MARK (M25) LOCATED IN THE NE 1/4 OF SECTION 25, T2S, R99W, 6th P.M., TAKEN
 FROM THE YANKEE GULCH QUADRANGLE, COLORADO, RIO BLANCO COUNTY, 7.5 MINUTE
 QUAD. (TOPOGRAPHIC MAP) PUBLISHED BY THE UNITED STATES DEPARTMENT OF THE
 INTERIOR, GEOLOGICAL SURVEY. SAID ELEVATION IS MARKED AS BEING 6971 FEET.

UELS, LLC

Corporate Office * 85 South 200 East
 Vernal, UT 84078 * (435) 789-1017

**TEP Rocky Mountain LLC**

FEDERAL RG 23-13-298
LOT 4, SECTION 13, T2S, R98W, 6th P.M.
RIO BLANCO COUNTY, COLORADO

SURVEYED BY	BART HUNTING	07-21-21	SCALE
DRAWN BY	T.L.L.	09-26-21	1" = 1000'

WELL LOCATION PLAT