

T2S, R98W, 6th P.M.

TEP Rocky Mountain LLC

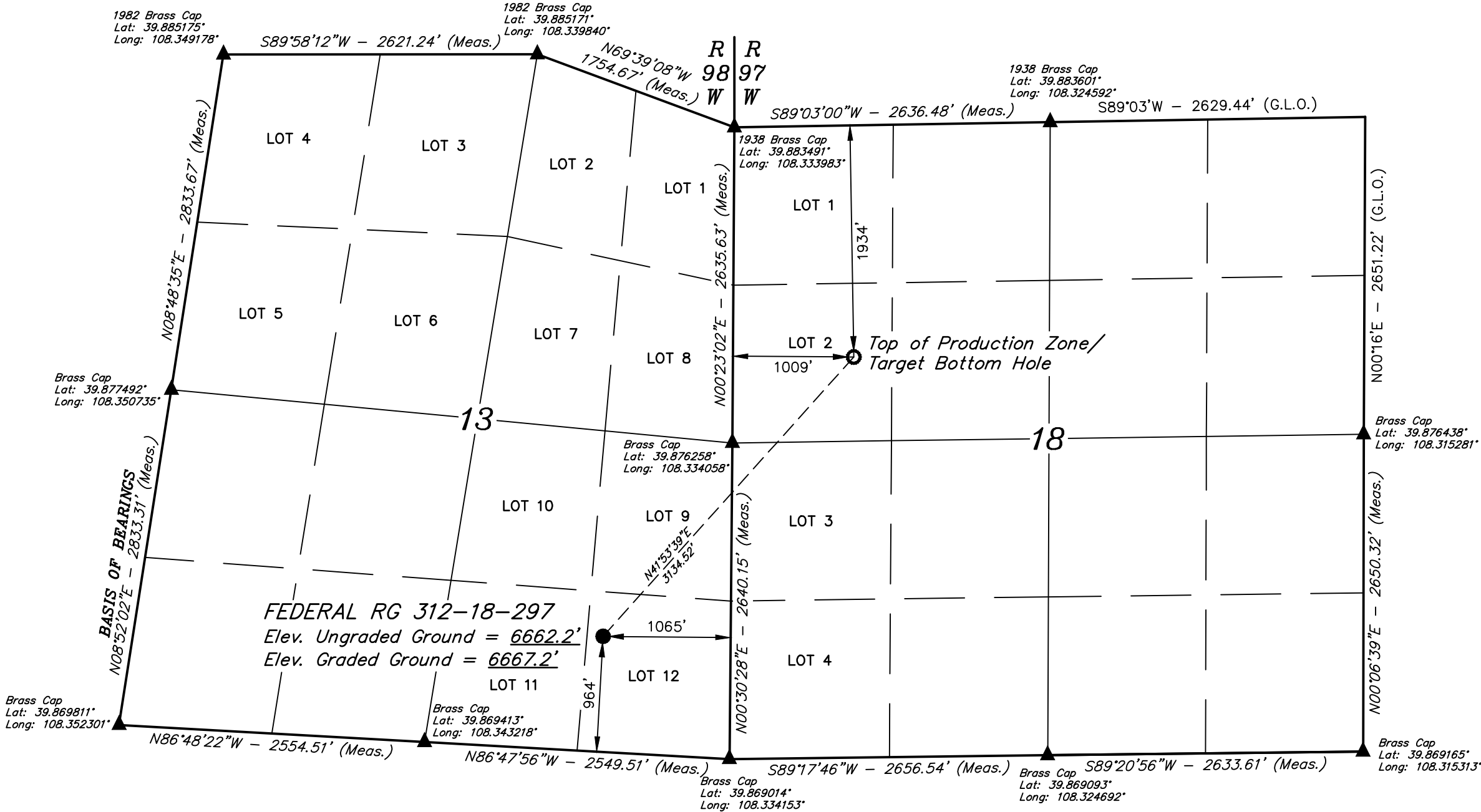
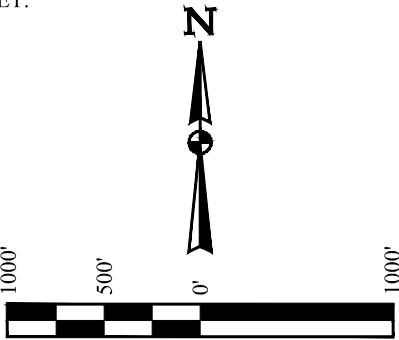
FEDERAL RG 312-18-297  
LOT 12, SECTION 13, T2S, R98W, 6th P.M.  
RIO BLANCO COUNTY, COLORADO

BASIS OF BEARINGS

BEARINGS ARE A BASED ASSUMPTION THAT THE WEST LINE OF THE  
SOUTHWEST 1/4 OF SECTION 13 BEARS N08°52'02"E. MONUMENTS  
DESCRIBED HEREON.

BASIS OF ELEVATION

BENCH MARK (MR 25) LOCATED IN THE NE 1/4 OF SECTION 25, T2S,  
R99W, 6th P.M., TAKEN FROM THE YANKEE GULCH QUADRANGLE,  
COLORADO, RIO BLANCO, 7.5 MINUTE SERIES (TOPOGRAPHIC  
MAP) PUBLISHED BY THE UNITED STATES DEPARTMENT OF THE  
INTERIOR, GEOLOGICAL SURVEY. SAID ELEVATION IS MARKED AS  
BEING 6971 FEET.



NOTE:  
Distances referenced on plat to section  
lines are perpendicular.

See location drawing plat for visible  
improvements within 2,000' of this  
location.

LEGEND:

- = PROPOSED WELLHEAD.
- = TOP OF PRODUCTION ZONE/  
TARGET BOTTOM HOLE.
- ▲ = SECTION CORNERS  
LOCATED. (NAD 83)

PDOP = 1.5

NAD 83 (SURFACE LOCATION)	NAD 83 (TPZ/TBH)
LATITUDE = 39°52'18.58" (39.871829°)	LATITUDE = 39°52'41.61" (39.878225°)
LONGITUDE = 108°20'16.47" (108.337908°)	LONGITUDE = 108°19'49.59" (108.330442°)
STATE PLANE NAD 83 (CO. NORTH)	STATE PLANE NAD 83 (CO. NORTH)
N: 1208902.74' E: 2203591.71'	N: 1211164.41' E: 2205760.42'
STATE PLANE NAD 83 (CO. CENTRAL)	STATE PLANE NAD 83 (CO. CENTRAL)
N: 1754888.21' E: 2203547.23'	N: 1757151.65' E: 2205714.31'

CERTIFICATE

THIS IS TO CERTIFY THAT THE ABOVE PLAT WAS PREPARED AND  
LOCATION AS SHOWN WAS STAKED ON THE GROUND FROM FIELD NOTES  
OF ACTUAL SURVEYS MADE BY ME OR UNDER MY SUPERVISION AND THAT  
THE SAME ARE TRUE AND CORRECT TO THE BEST OF MY KNOWLEDGE AND  
BELIEF.

REGISTERED LAND SURVEYOR  
REGISTRATION NO. 39130  
STATE OF COLORADO  
04-12-22

REV: 5 04-12-22 T.L.L. (ADD TPZ)



UELS, LLC  
Corporate Office \* 85 South 200 East  
Vernal, UT 84078 \* (435) 789-1017

SURVEYED BY	BART HUNTING	07-21-21	SCALE
DRAWN BY	J.J.	09-21-21	1" = 1000'

WELL LOCATION PLAT