

LEGEND:

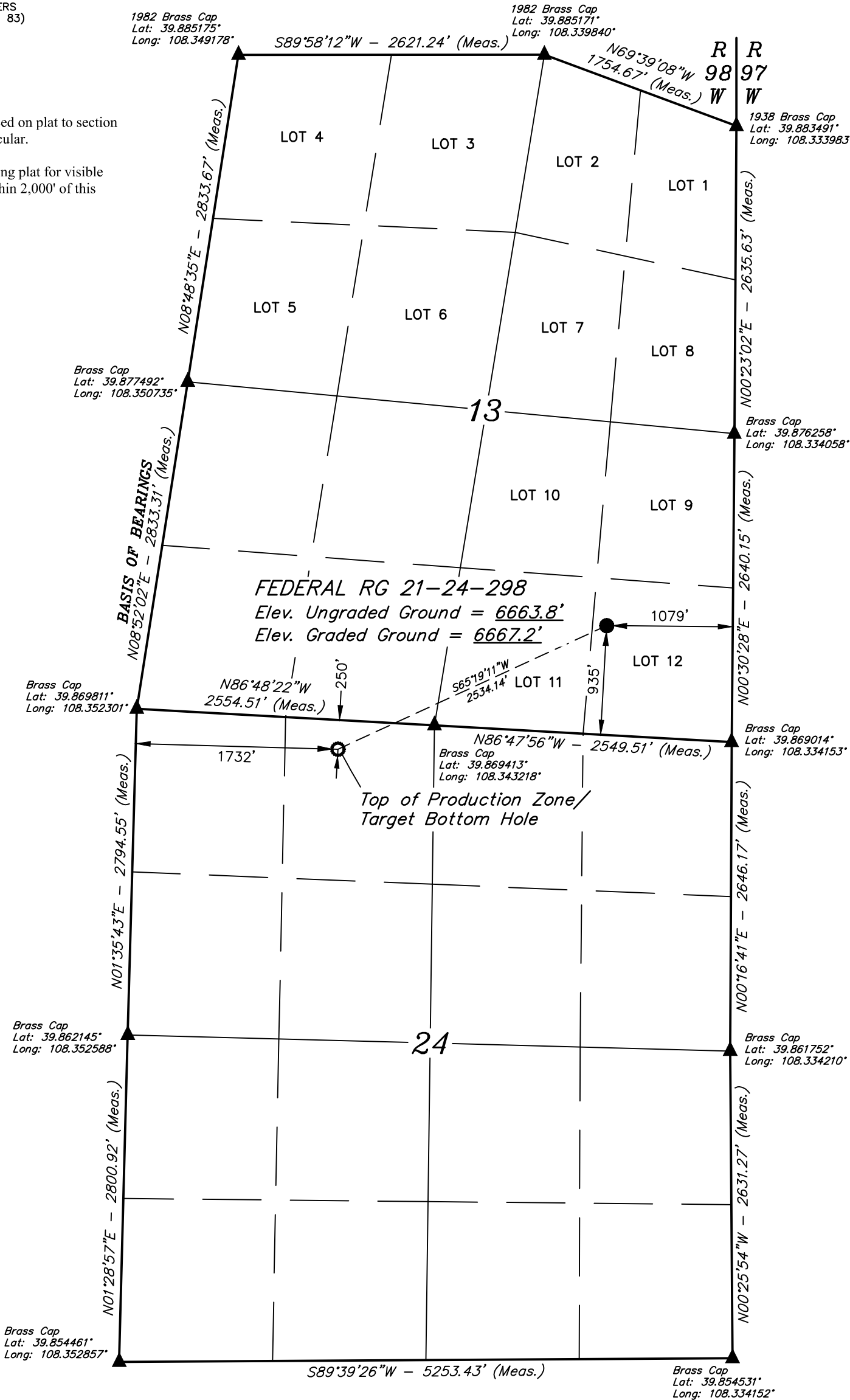
- = PROPOSED WELLHEAD.
- = TOP OF PRODUCTION ZONE/
TARGET BOTTOM HOLE.
- ▲ = SECTION CORNERS
LOCATED. (NAD 83)

NOTE:

Distances referenced on plat to section lines are perpendicular.

See location drawing plat for visible improvements within 2,000' of this location.

T2S, R98W, 6th P.M.



PDOP = 1.5

NAD 83 (SURFACE LOCATION)	NAD 83 (TPZ/TBH)
LATITUDE = 39°52'18.31" (39.871752°)	LATITUDE = 39°52'07.88" (39.868855°)
LONGITUDE = 108°20'16.65" (108.337959°)	LONGITUDE = 108°20'46.19" (108.346165°)
STATE PLANE NAD 83 (CO. NORTH)	STATE PLANE NAD 83 (CO. NORTH)
N: 1208875.12' E: 2203576.34'	N: 1207894.39' E: 2201240.60'
STATE PLANE NAD 83 (CO. CENTRAL)	STATE PLANE NAD 83 (CO. CENTRAL)
N: 1754860.57' E: 2203531.87'	N: 1753878.01' E: 2201196.78'

CERTIFICATE

THIS IS TO CERTIFY THAT THE ABOVE PLAT WAS PREPARED AND LOCATION AS SHOWN WAS STAKED ON THE GROUND FROM FIELD NOTES OF ACTUAL SURVEYS MADE BY ME OR UNDER MY SUPERVISION AND THAT THE SAME ARE TRUE AND CORRECT TO THE BEST OF MY KNOWLEDGE AND BELIEF.

REGISTERED LAND SURVEYOR
REGISTRATION NO. 180
STATE OF COLORADO

REV: 5 04-12-22 T.L.L. (ADD TPZ)

BASIS OF BEARINGS

BEARINGS ARE A BASED ASSUMPTION THAT THE WEST LINE OF THE SOUTHWEST 1/4 OF SECTION 13 BEARS N08°52'02"E. MONUMENTS DESCRIBED HEREON.

BASIS OF ELEVATION

BENCH MARK (MR 25) LOCATED IN THE NE 1/4 OF SECTION 25, T2S, R99W, 6th P.M., TAKEN FROM THE YANKEE GULCH QUADRANGLE, COLORADO, RIO BLANCO, 7.5 MINUTE SERIES (TOPOGRAPHIC MAP) PUBLISHED BY THE UNITED STATES DEPARTMENT OF THE INTERIOR, GEOLOGICAL SURVEY, SAID ELEVATION IS MARKED AS BEING 6971 FEET.

UELS, LLC

Corporate Office * 85 South 200 East
Vernal, UT 84078 * (435) 789-1017



TEP Rocky Mountain LLC

FEDERAL RG 21-24-298
LOT 12, SECTION 13, T2S, R98W, 6th P.M.
RIO BLANCO COUNTY, COLORADO

SURVEYED BY	BART HUNTING	07-21-21	SCALE
DRAWN BY	J.J.	09-21-21	1" = 1000'

WELL LOCATION PLAT