



Company **ORPAN WELL PROJECT**

Well
Buckeye #2

Field Debeque

County **Mesa** State **Colorado**

Location:	API # : 05-077-40015-00	Other Services
-----------	-------------------------	----------------

SEC	33	TWP	8s	RGE	97w
-----	----	-----	----	-----	-----

Elevation

Permanent Datum	gl	Elevation	4938
-----------------	----	-----------	------

-log Measured From	g1	Ft Above PD	0
--------------------	----	-------------	---

Drilling Measured From

0 kb

G.L. 4038

Date 7-26-2022

Run Number
one

Depth Driller	n/a
---------------	-----

Present Depth Driller	n/a
-----------------------	-----

Depth Logger 116

Bottom Logged Interval	116
------------------------	-----

Top Log Interval	surface
------------------	---------

Fluid Level	surface
-------------	---------

Type Fluid	water
------------	-------

Max. Recorded Temp.	n/a
---------------------	-----

Estimated Cement Top	n/a
----------------------	-----

Equipment Number	209
------------------	-----

Location	Grand Junction Co.
----------	--------------------

Recorded By	C. Burns
-------------	----------

Witnessed By	
--------------	--

Borehole Record

Run Number	Bit	From	To
------------	-----	------	----

Casing Record From

To

<<< Fold Here >>>

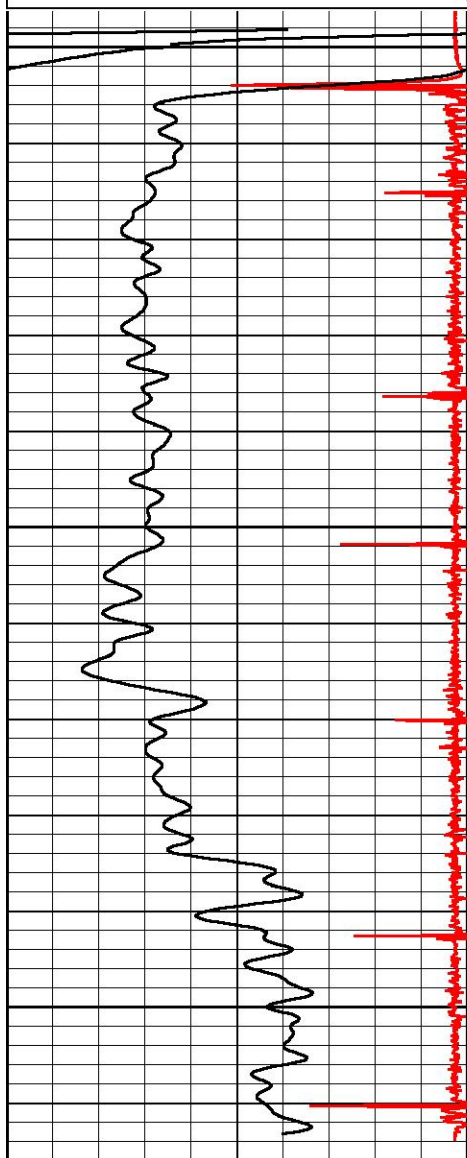
All interpretations are opinions based on inferences from electrical or other measurements and we cannot and do not guarantee the accuracy or correctness of any interpretation, and we shall not, except in the case of gross or willful negligence on our part, be liable or responsible for any loss, costs, damages, or expenses incurred or sustained by anyone resulting from any interpretation made by any of our officers, agents or employees. These interpretations are also subject to our general terms and conditions set out in our current Price Schedule.

WARRIOR 7.0 SOFTWARE - Comments



Database File snow.db
 Dataset Pathname pass5
 Presentation Format r_ax_cbl
 Dataset Creation Thu Jul 21 15:25:52 2022
 Charted by Depth in Feet scaled 1:240

12000	CCL	18000	LTEN
0	GR (GAPI)	150	0 (lb4200)



0

100

12000	CCL	18000	LTEN
0	GR (GAPI)	150	0 (lb4200)

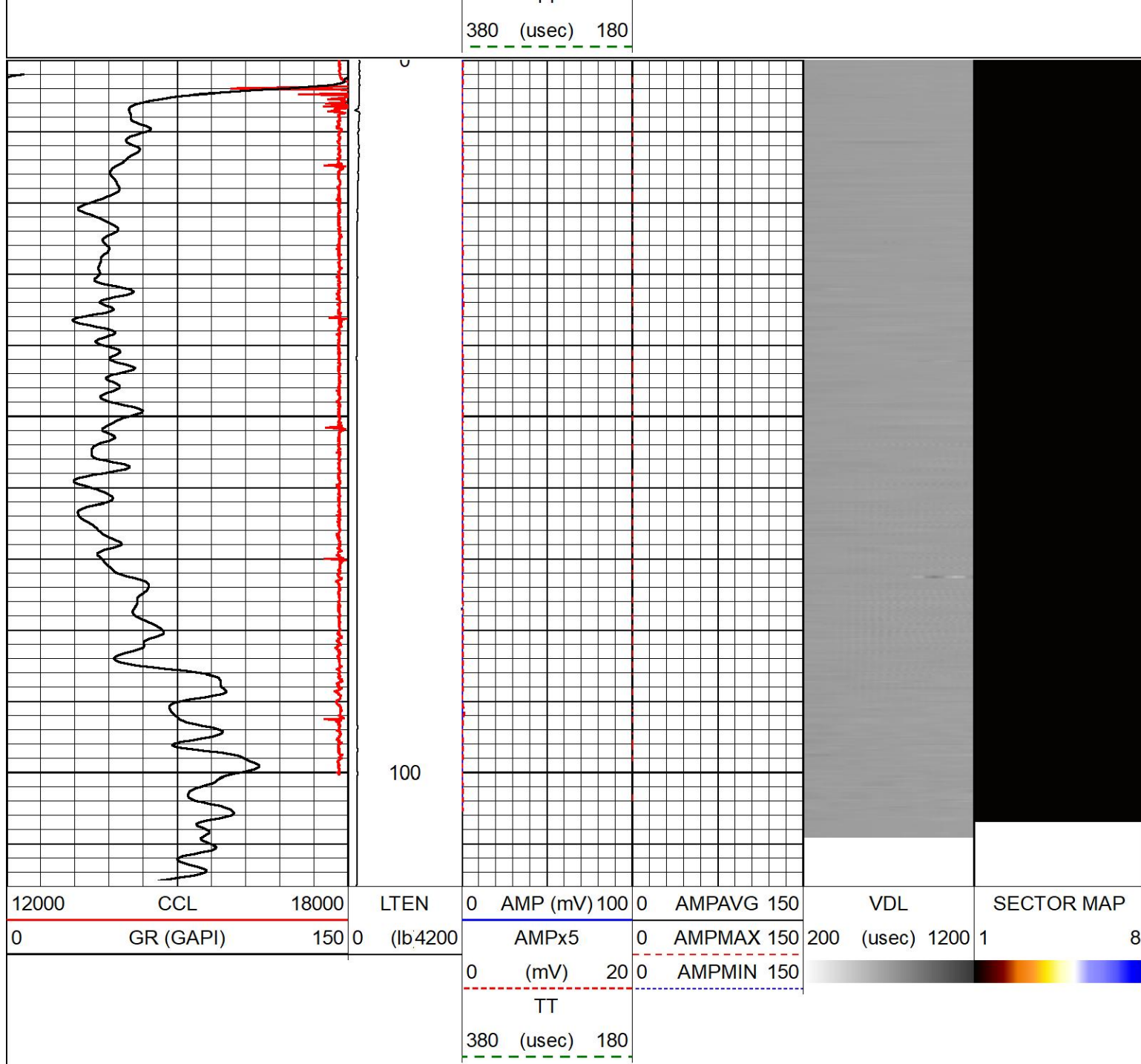


MAIN PASS CBL

Database File snow.db
 Dataset Pathname pass3
 Presentation Format r_ax_cbl
 Dataset Creation Thu Jul 21 14:57:38 2022
 Charted by Depth in Feet scaled 1:240

12000	CCL	18000	LTEN
0	GR (GAPI)	150	0 (lb4200)

0	AMP (mV) 100	0	AMPAVG 150	VDL	SECTOR MAP
	AMPx5	0	AMPMAX 150	200 (usec) 1200	1
0	(mV) 20	0	AMPMIN 150		8



40 ARM CALIPER

Database File snow.db
 Dataset Pathname pass9
 Presentation Format r_40_55d
 Dataset Creation Tue Jul 26 08:41:27 2022
 Charted by Depth in Feet scaled 1:240

	LTEN	0	MITDEV (deg)	50	2	FING01 (in)	7
0	(lb)1600	0	MITROT (deg)	360	1.9	FING02 (in)	6.9
		5	AVEDIA (in)	6.5	-1.8	FING39 (in)	3.2
		5	MAXDIA (in)	6.5	-1.9	FING40 (in)	3.1
		5	MINDIA (in)	6.5	MINDIA	AVEDIA	MAXDIA

