

Description:

#1 - Phelps 11-32CHZ AST Release Site



Description:

#2 - A Pinhole Failure in the AST Shell Caused the Release

Photo Log



Description:

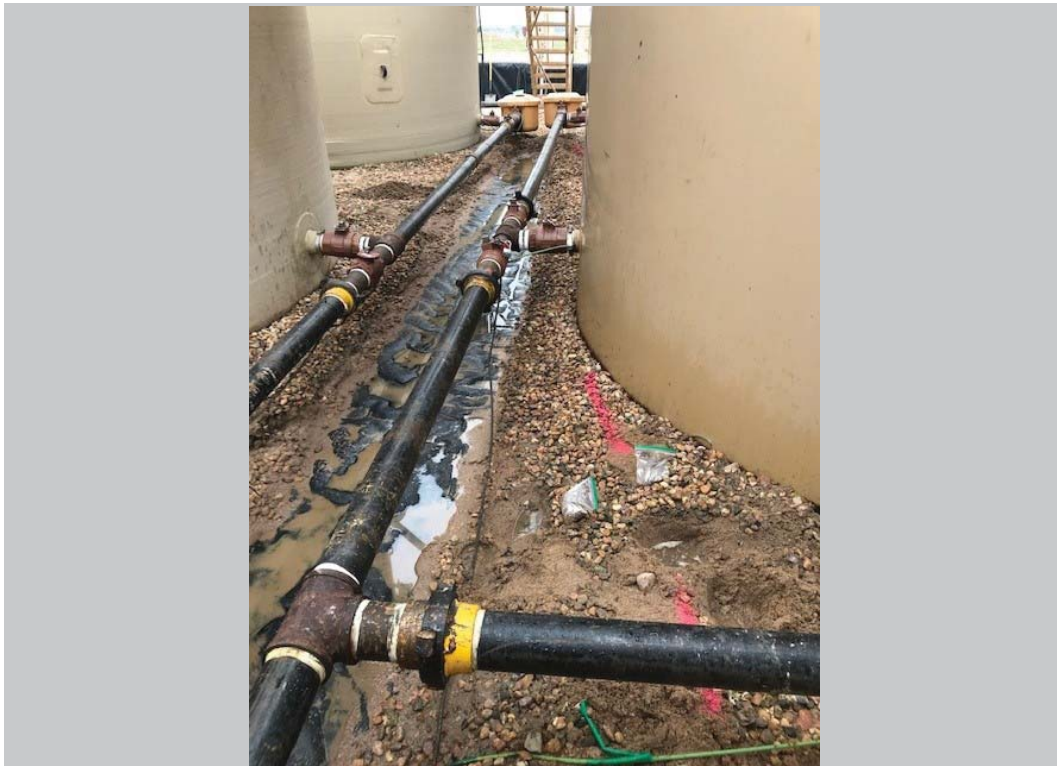
#3 - Looking North at AST that Failed. Note Synthetic Liner Beneath ASTs.

Photo Log



Description:

#4 - Looking West at AST that Failed. Impacted Soil has been removed above the liner and partially beneath the AST.



Description:

#5 - Looking West at Impacted Area. Pink Line Represents Further Excavation Required.