



**Cement Bond
Gamma Ray
Collar Correlation Log**

Company BOHLER WELL SERVICE LLC
Well UPRR #1 (OWP)
Field Krauthed
County Adams **State** Colorado

Location: AP1 #: 05-001-07978
 NESE
 SEC 3 TWP 1S RGE 64W
 Permanent Datum Ground Level Elevation 5115
 Log Measured From Kelly Bushing
 Drilling Measured From Kelly Bushing
 Other Services
 SQS
 Elevation
 K.B. 5126
 D.F. 5125
 G.L. 5115

Company BOHLER WELL SERVICE LLC
Well UPRR #1 (OWP)
Field Krauthed
County Adams
State Colorado

Date	25 February 2022
Run Number	One
Depth Driller	7769
Depth Logger	3301
Bottom Logged Interval	3300
Top Log Interval	Surface
Casing Size	5 1/2
Type Fluid	Water
Max. Recorded Temp.	Not Recorded
Estimated Cement Top	---
Time Well Ready	ROA
Time Logger on Bottom	14:00
Unit Number	200100
Tool Size/ID Number	2.75 Probe
location	Sterling
Recorded By	Scott Erb
Witnessed By	Mike Bohler

Borehole Record		Tubing Record					
Run Number	Bit	From	To	Size	Weight	From	To

Casing Record		Surface String		Production String	
Size	Wgt/Ft	Top	Bottom	Size	Total Depth
8 5/8	24	Surface	240	5 1/2	Surface

<<< Fold Here >>>

All interpretations are opinions based on inferences from electrical or other measurements and we cannot and do not guarantee the accuracy or correctness of any interpretation, and we shall not, except in the case of gross or willful negligence on our part, be liable or responsible for any loss, costs, damages, or expenses incurred or sustained by anyone resulting from any interpretation made by any of our officers, agents or employees. These interpretations are also subject to our general terms and conditions set out in our current Price Schedule.

Comments

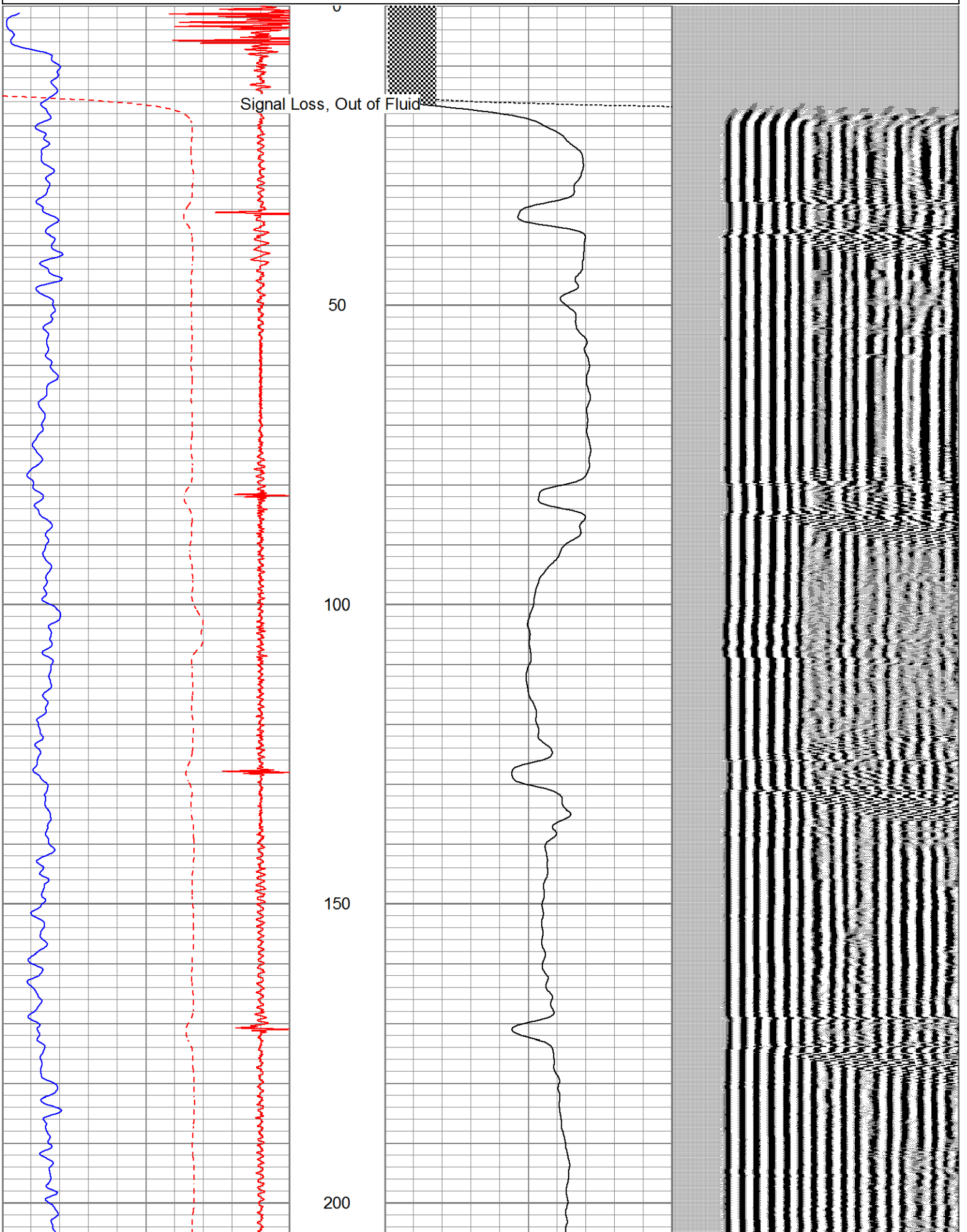
No log available for correlation

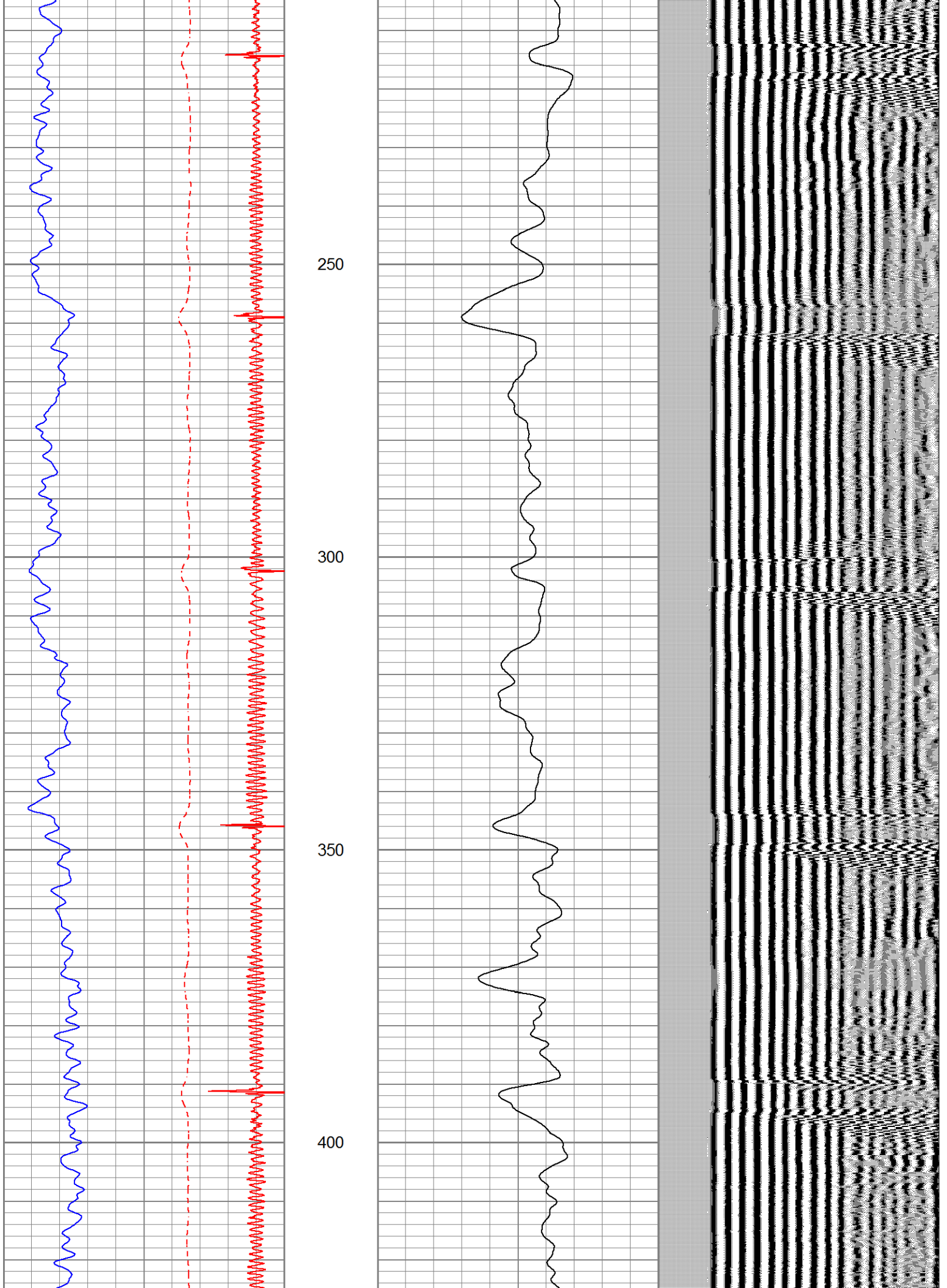
Database File uprr 1.db
 Dataset Pathname pass21.1
 Presentation Format noble en
 Dataset Creation Fri Feb 25 15:03:37 2022
 Charted by Depth in Feet scaled 1:240

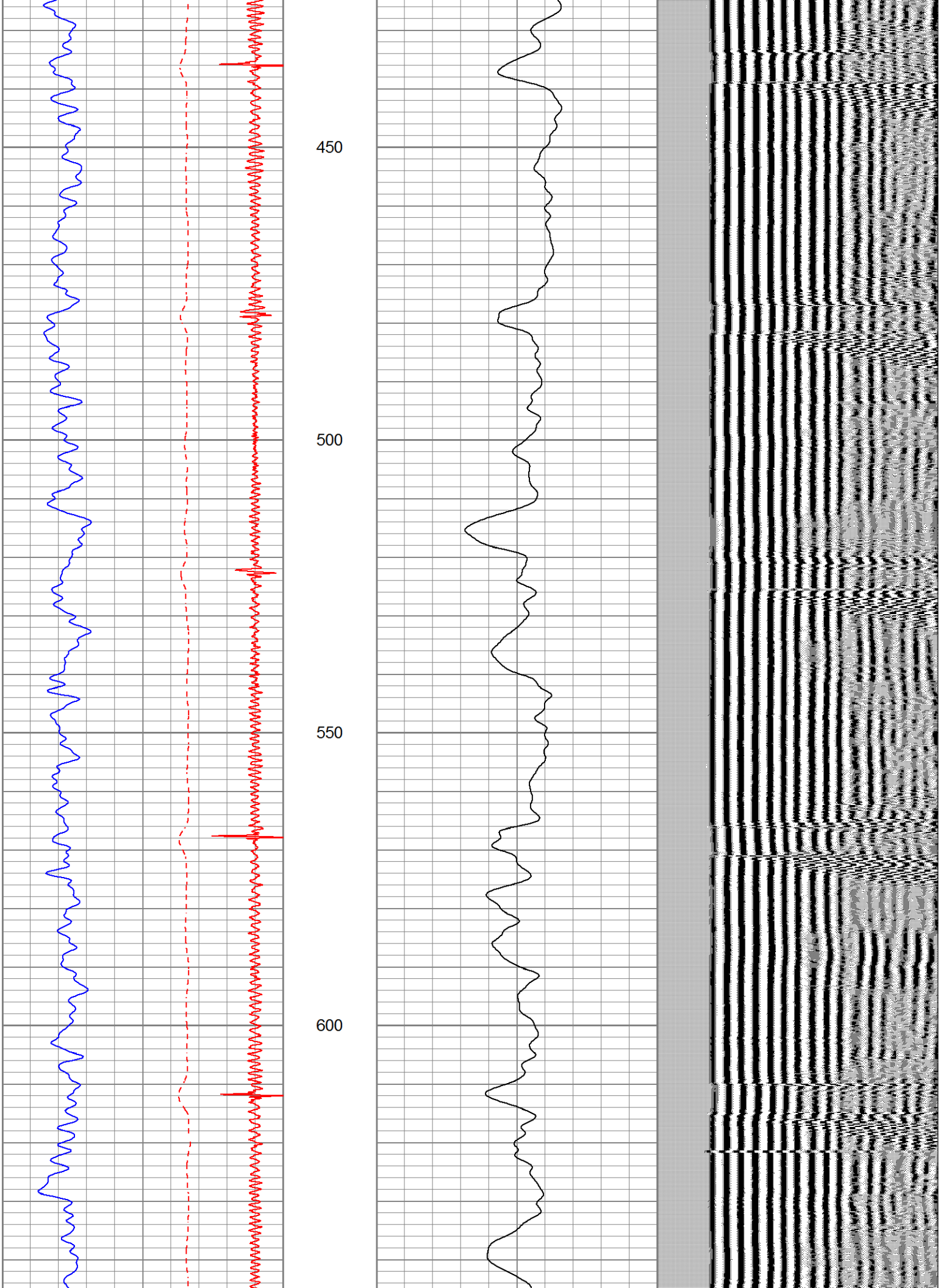
4.5	CCL	-0.5
0	Gamma Ray (GAPI)	300
400	TT3FT (usec)	200

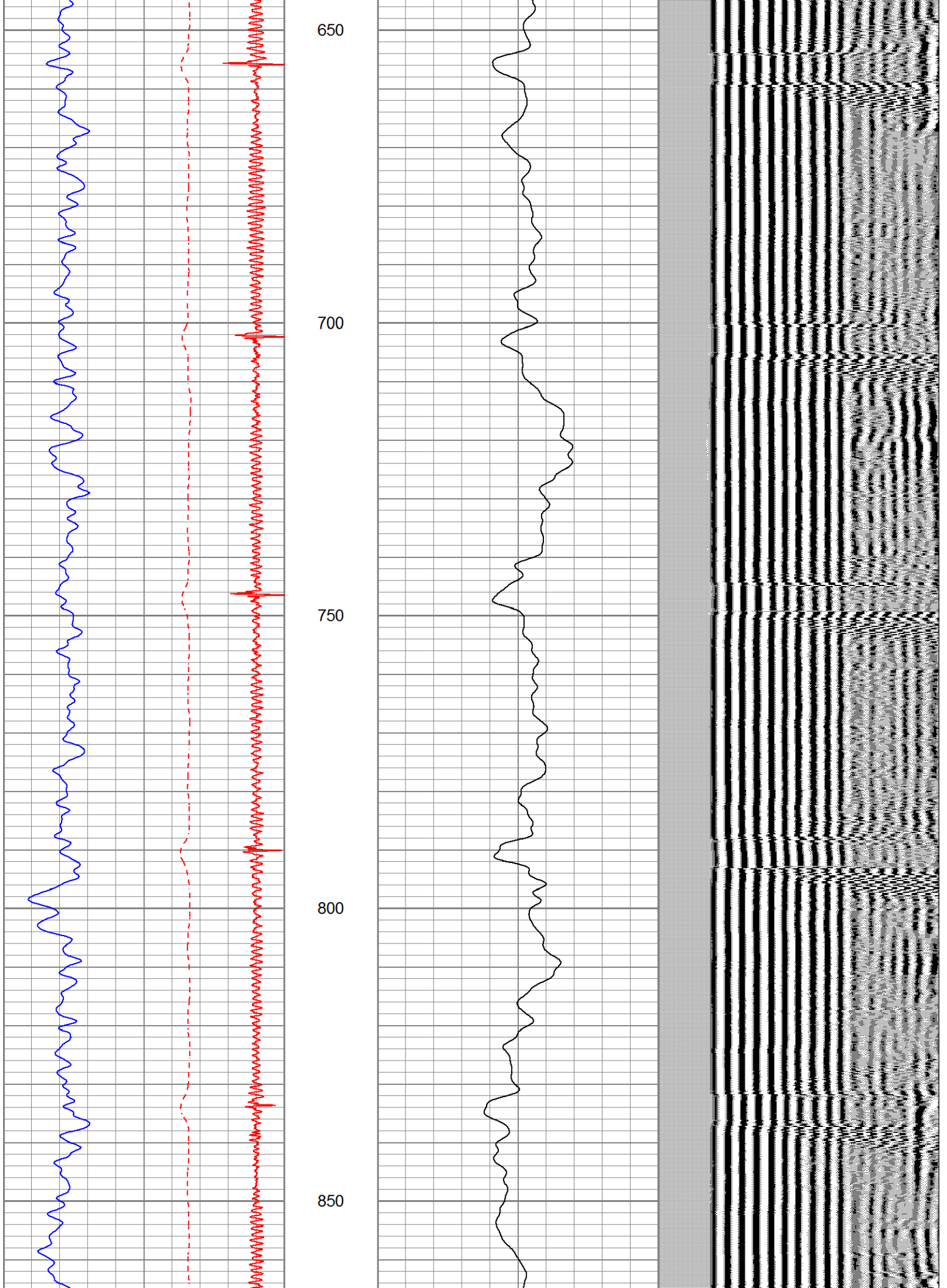
0	Amplified Amplitude (mV)	20
0	Amplitude (mV)	100

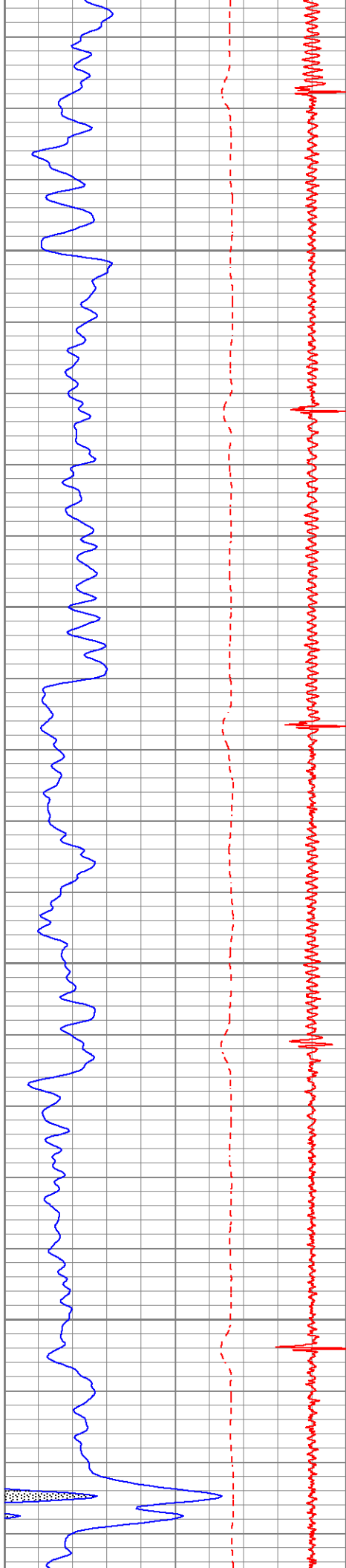
Variable Density 1200









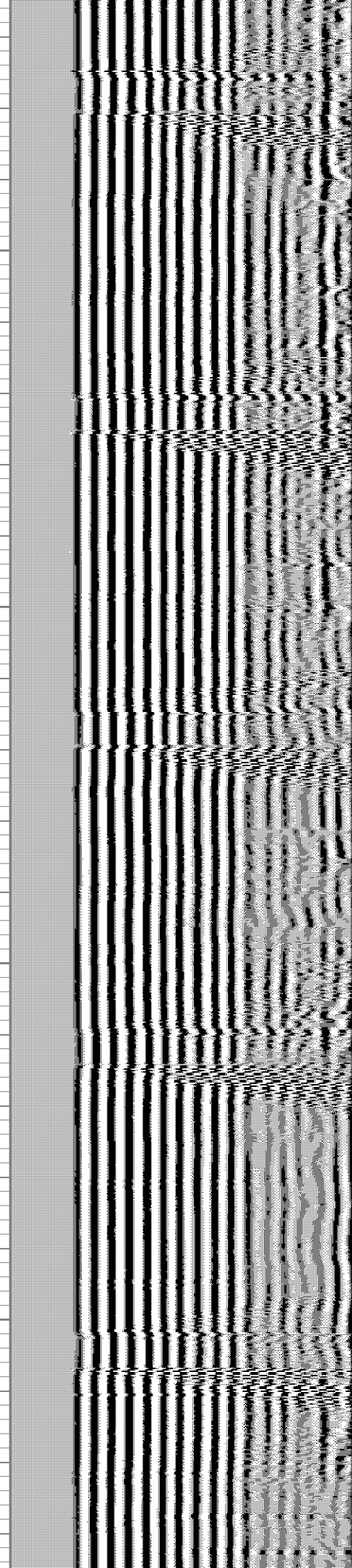
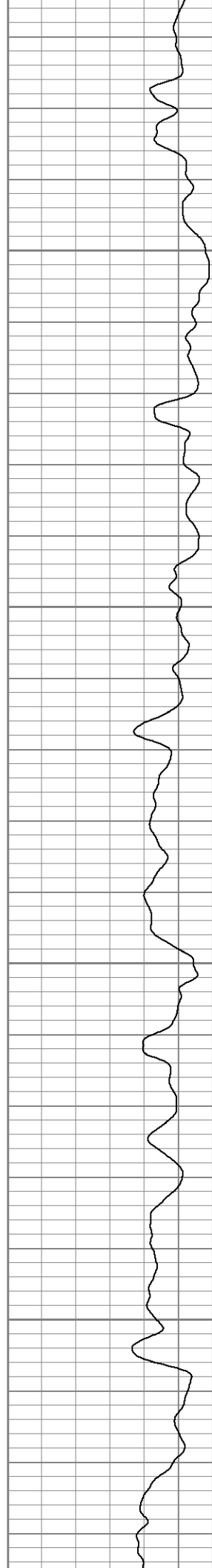


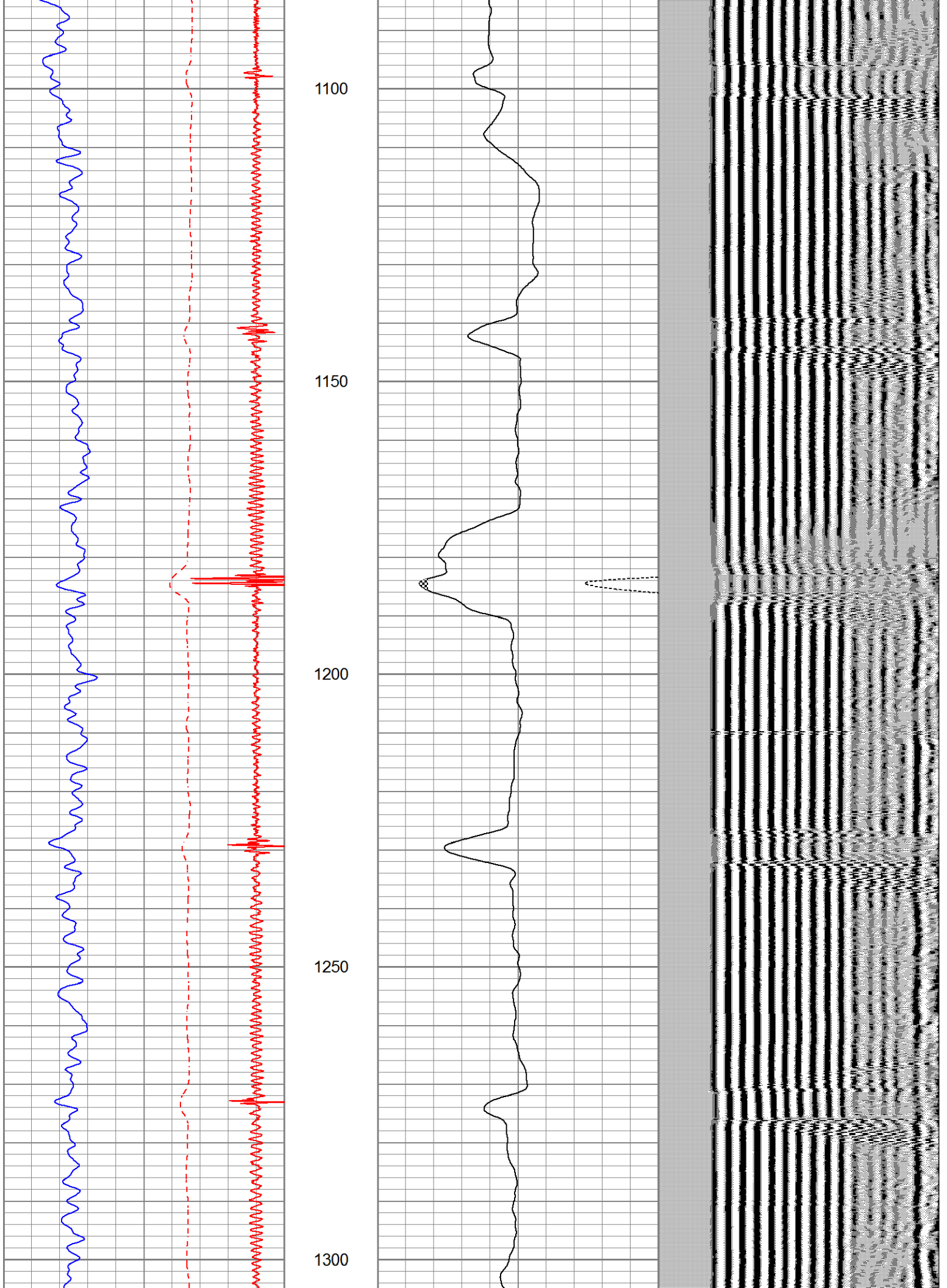
900

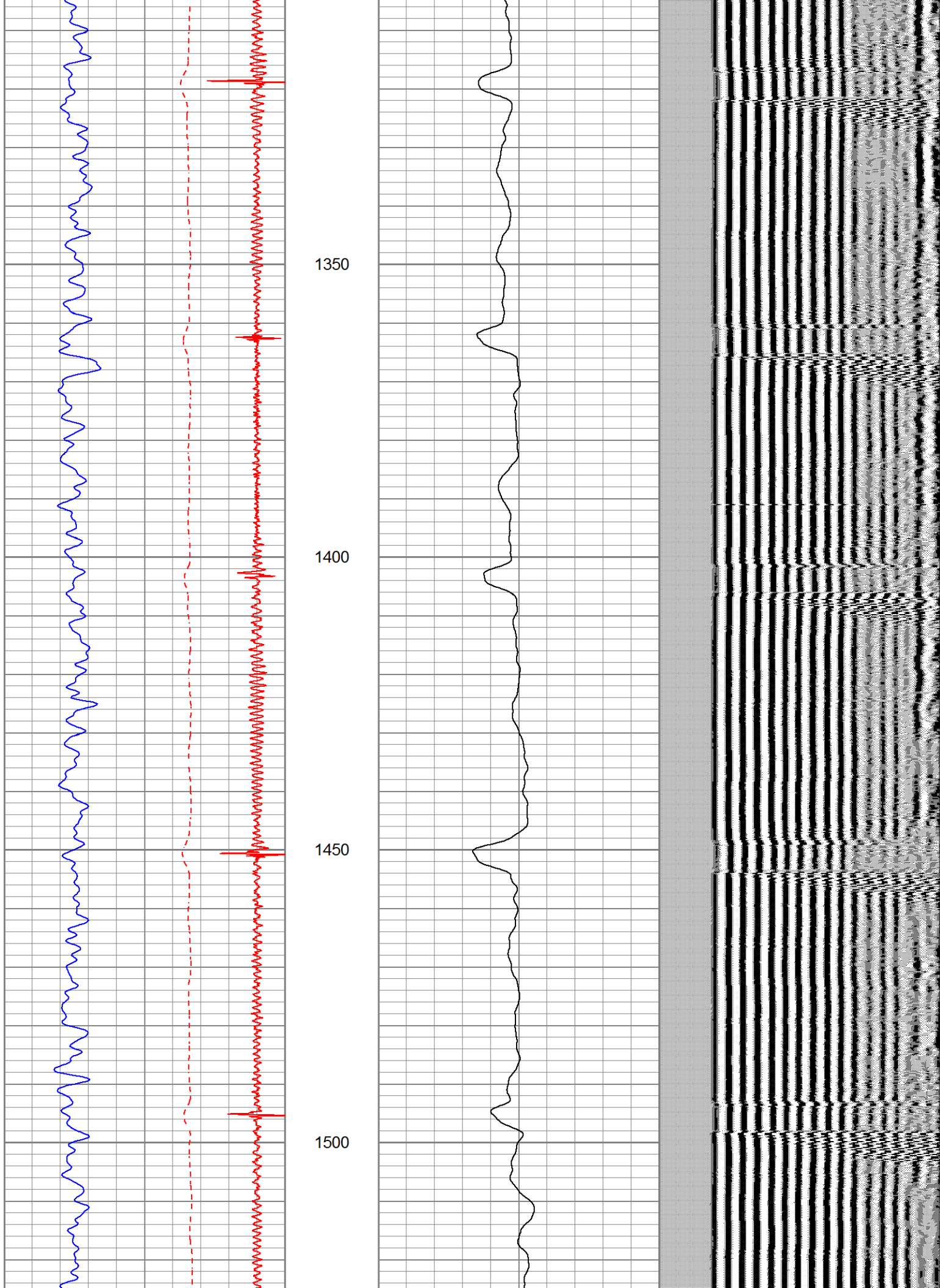
950

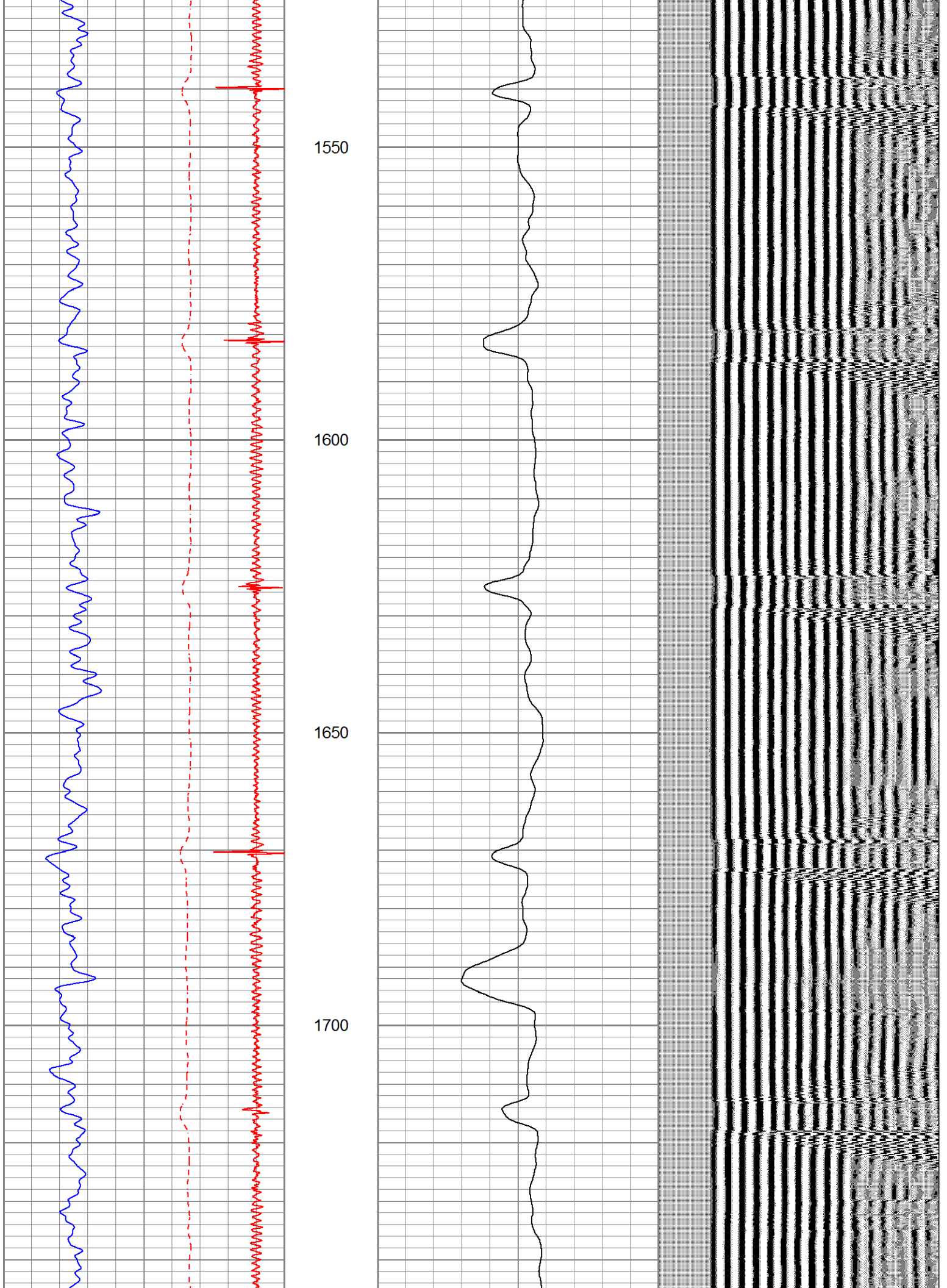
1000

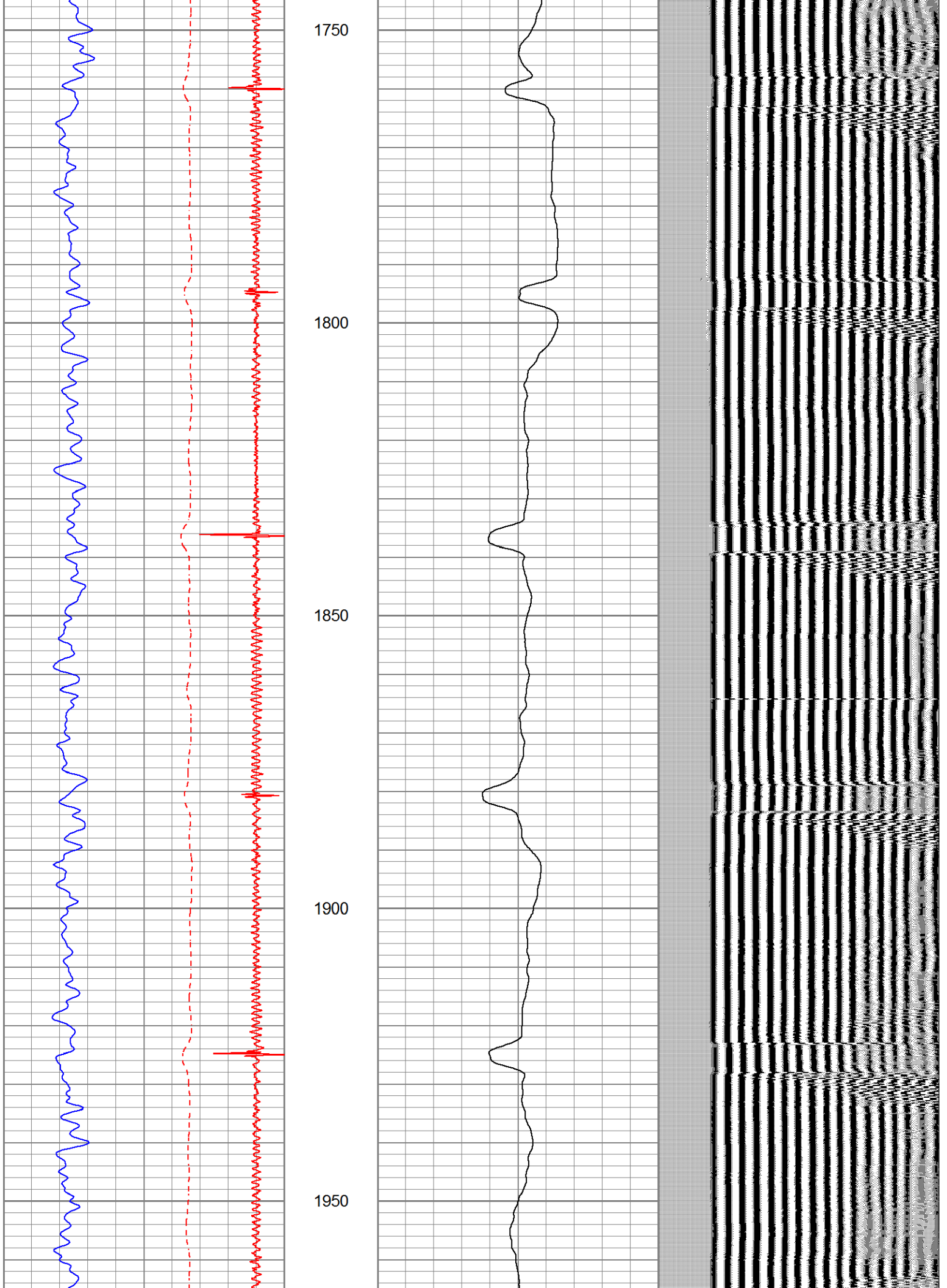
1050

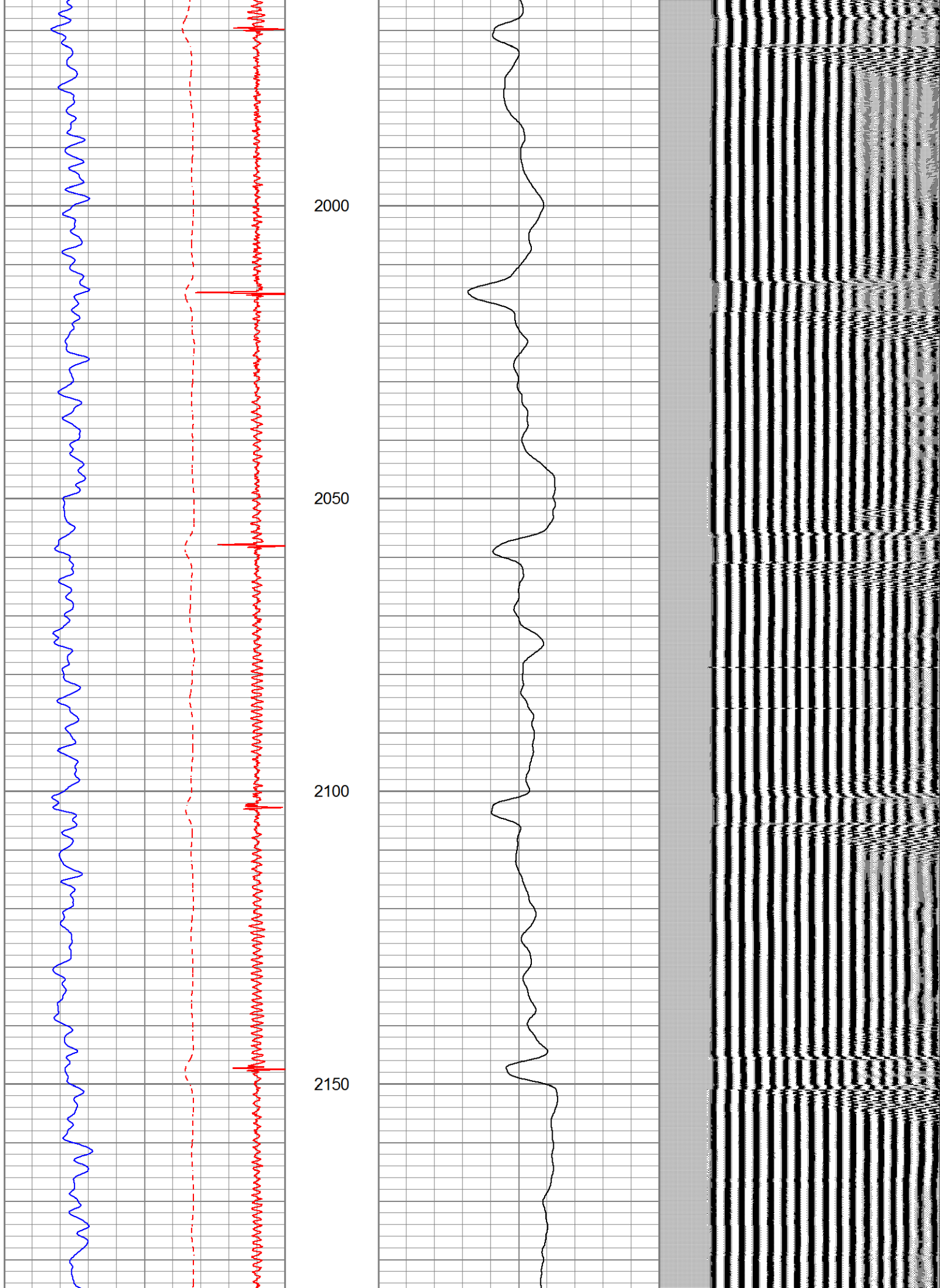


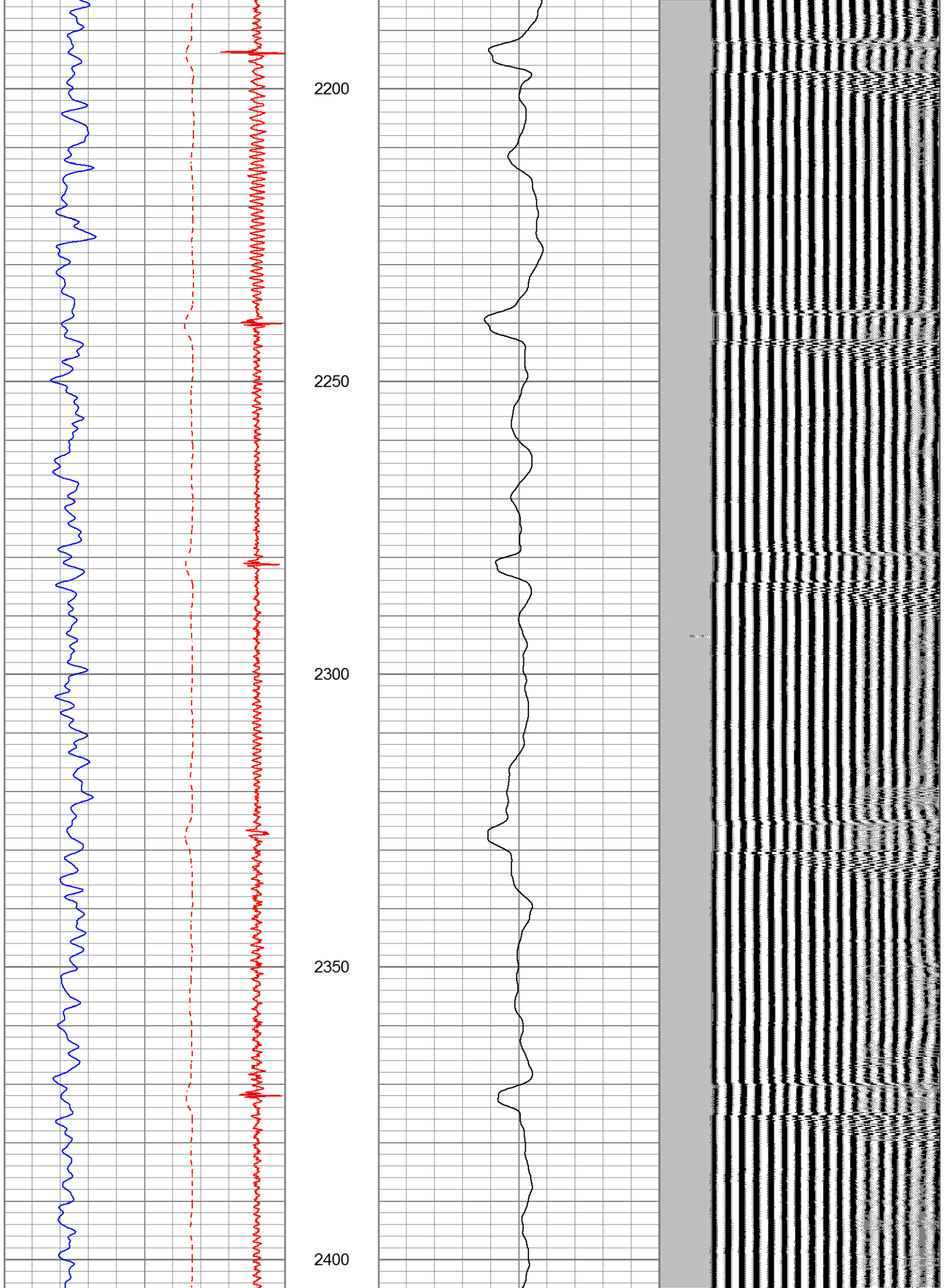


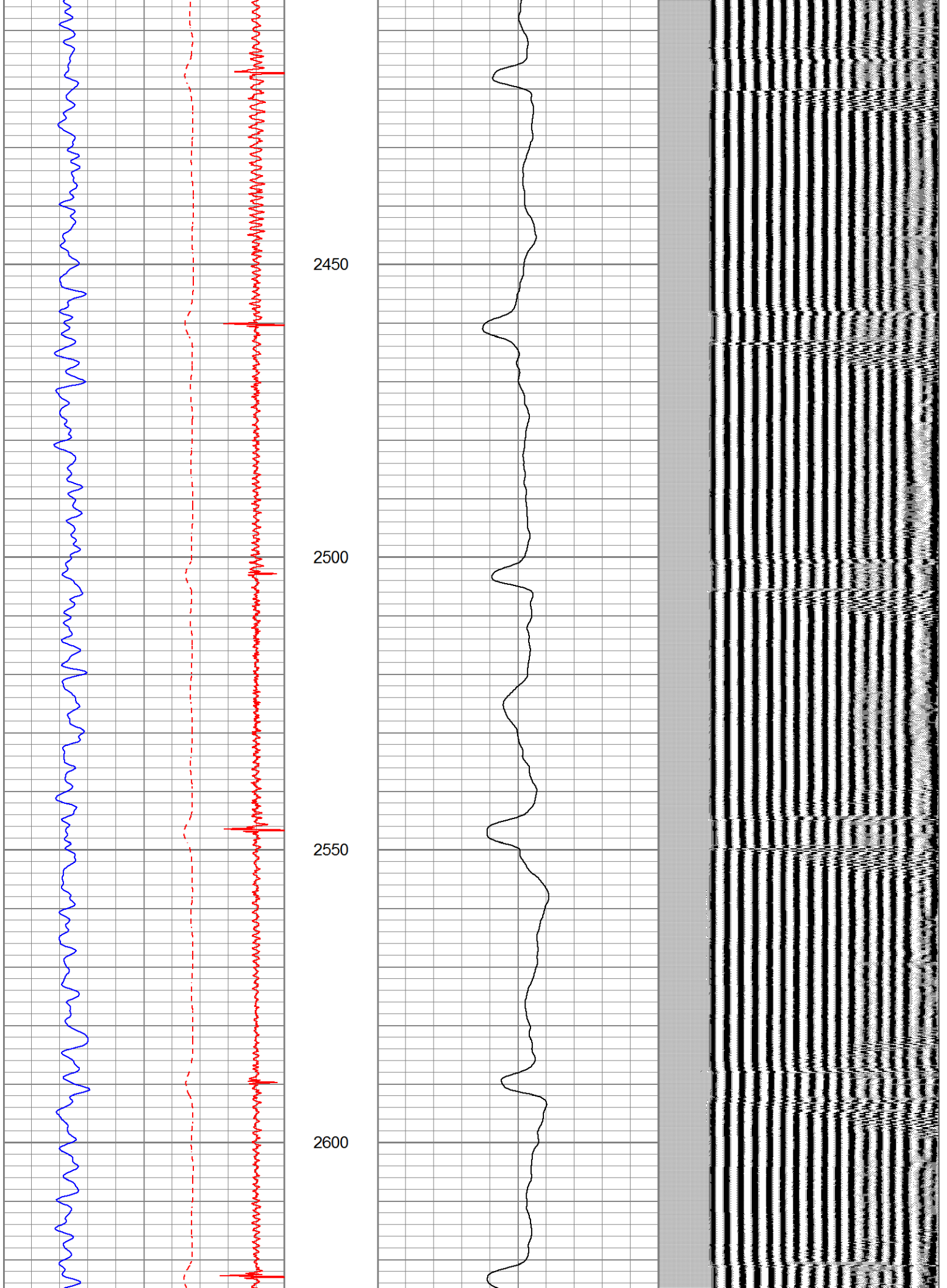


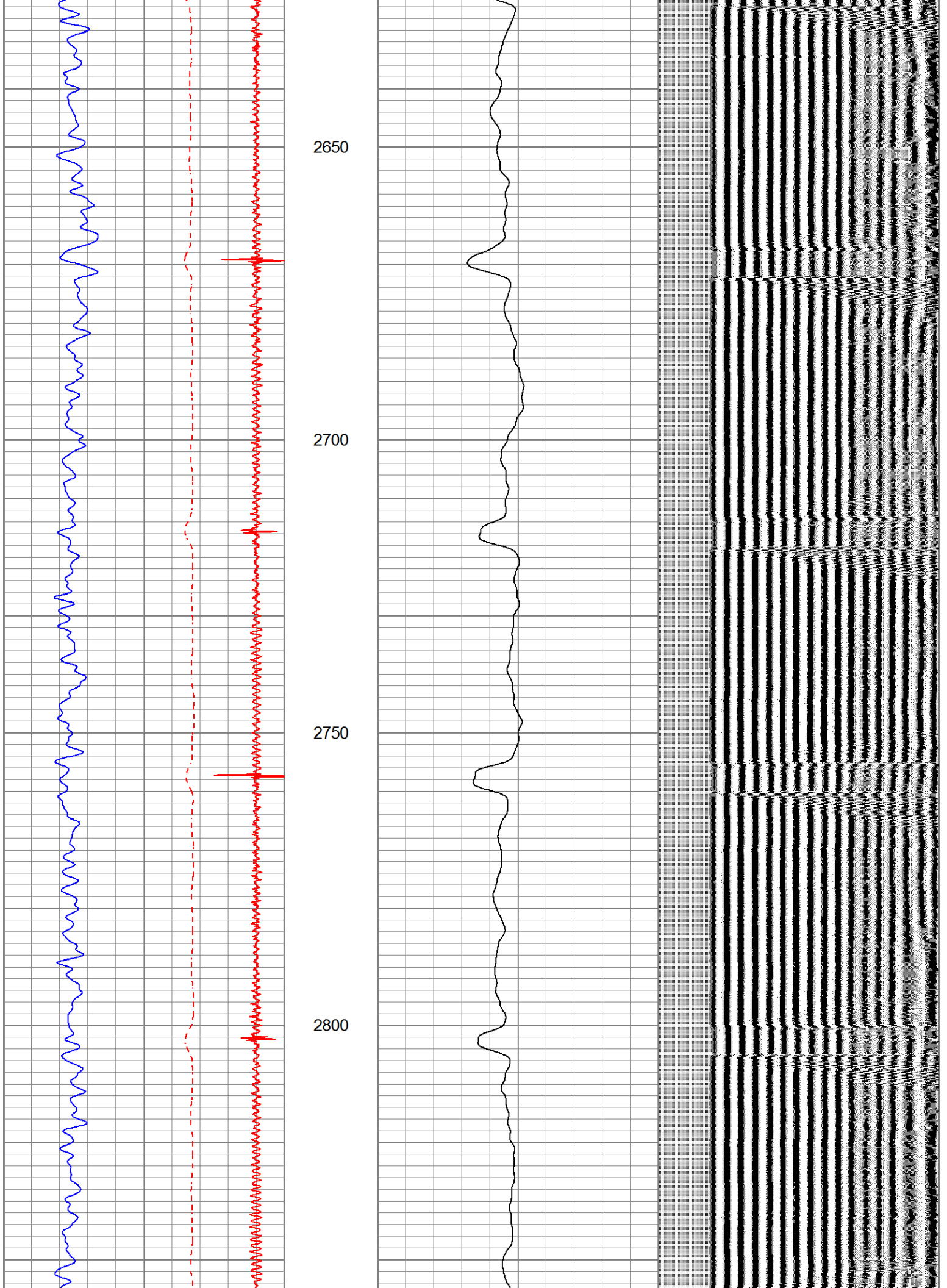


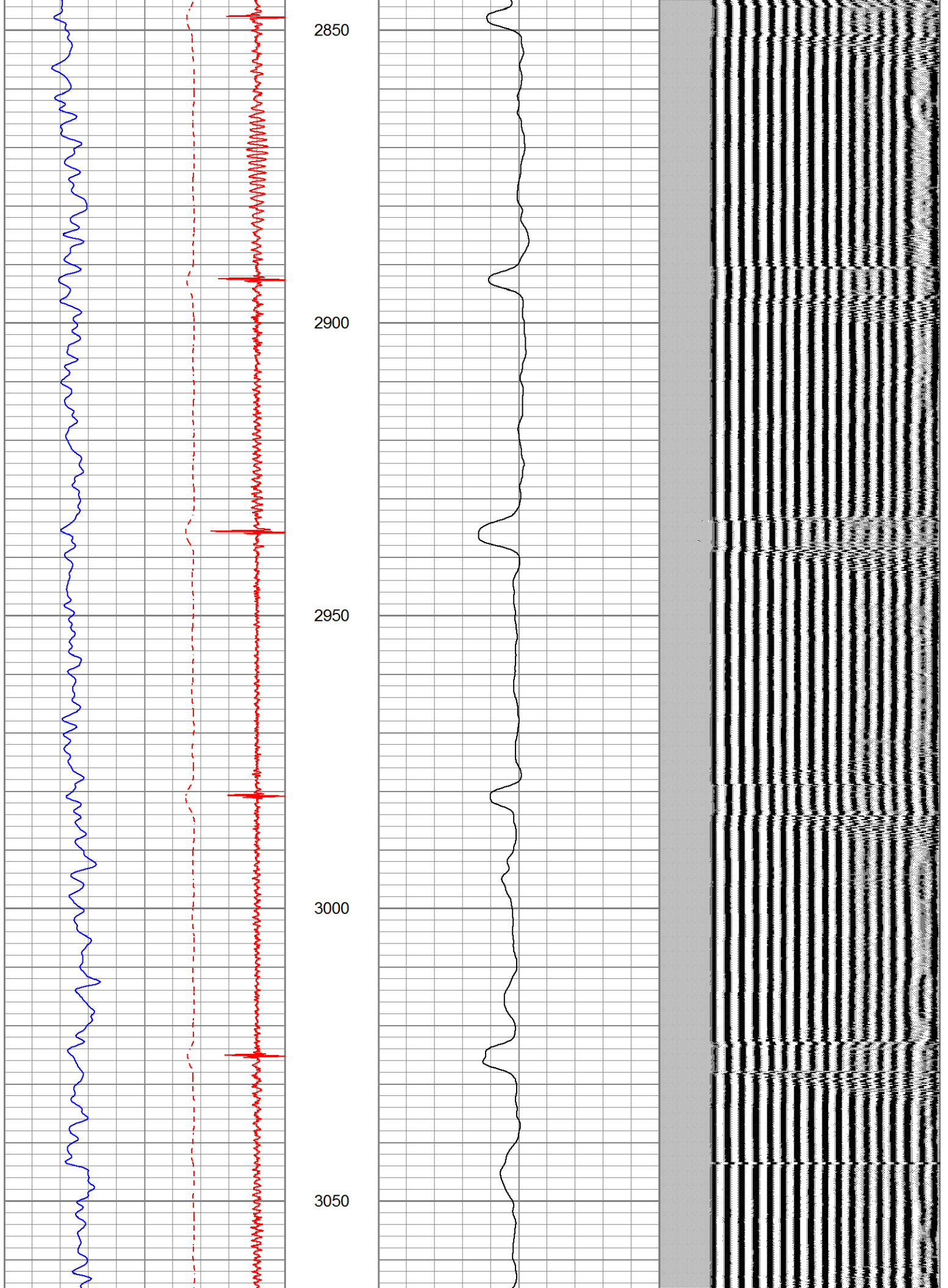


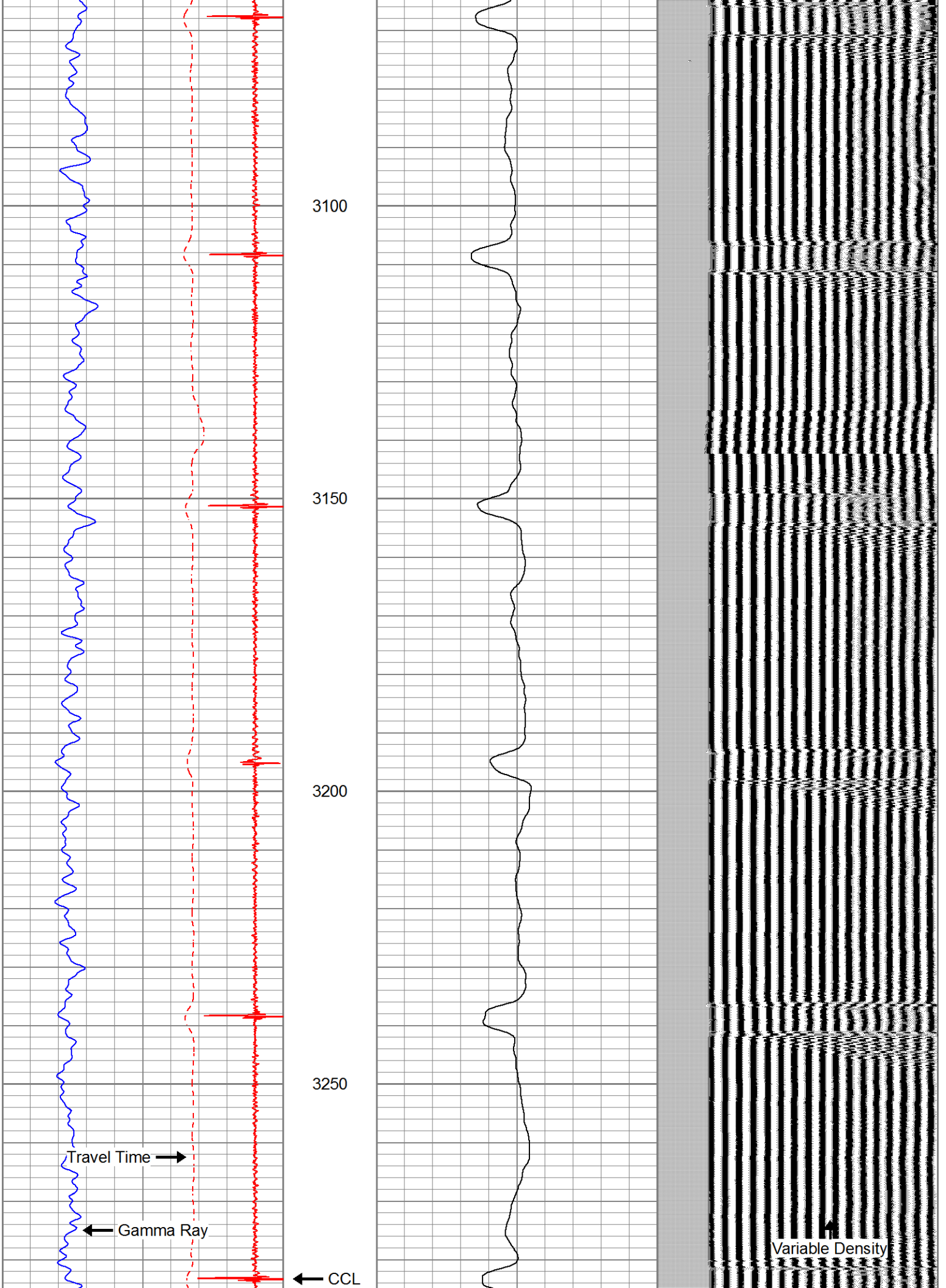


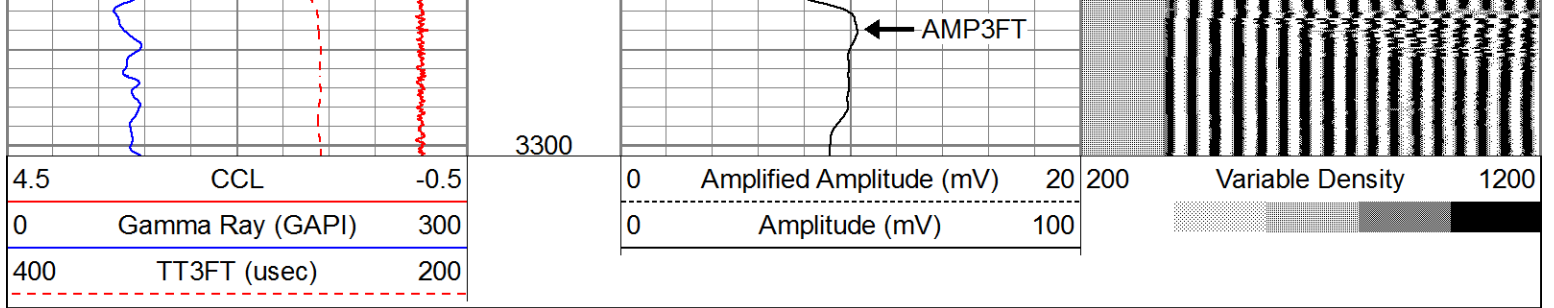












Calibration Report			
Database File	uprr 1.db		
Dataset Pathname	pass21.1		
Dataset Creation	Fri Feb 25 15:03:37 2022		

Gamma Ray Calibration Report			
Serial Number:	101010		
Tool Model:	Probe275dig		
Performed:	Wed Feb 27 07:52:48 2013		
Calibrator Value:	1.0	GAPI	
Background Reading:	0.0	cps	
Calibrator Reading:	1.0	cps	
Sensitivity:	0.6500	GAPI/cps	

Segmented Cement Bond Log Calibration Report			
Serial Number:	110802		
Tool Model:	Probe275Digital		
Calibration Casing Diameter:	5.500	in	
Calibration Depth:	-1742.937	ft	

Master Calibration, performed Mon Feb 21 15:00:22 2022:

	Raw (v)		Calibrated (mv)		Results	
	Zero	Cal	Zero	Cal	Gain	Offset
3'	-0.012	1.571	1.000	71.921	41.933	1.468
CAL						
5'	-0.012	1.561	1.000	71.921	45.101	1.537
SUM						
S1						
S2						
S3						
S4						
S5						
S6						
S7						
S8						

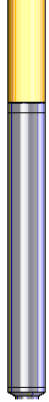
Internal Reference Calibration, performed (Not Performed):

	Raw (v)		Calibrated (v)		Results	
	Zero	Cal	Zero	Cal	Gain	Offset
CAL						

Air Zero Calibration, performed (Not Performed):

	Raw (v)	Calibrated (v)	Results
	Zero	Zero	Offset
3'	0.000	0.000	0.000
5'	0.000	0.000	0.000
SUM			
S1			
S2			
S3			
S4			
S5			
S6			
S7			
S8			

Sensor	Offset (ft)	Schematic	Description	Length (ft)	O.D. (in)	Weight (lb)
			CHD-STNDRD (1) Standard Cable Head	1.00	1.69	10.00
			CENT-Probe Probe 2 3/4 Centralizer	2.88	2.75	20.00
WVF3FT	11.60		CBL-Probe275Digital (110802) Digital 3' 5' CBL Move voltage to +/- 150 for cal mode	8.75	2.75	92.00
WVF5FT	10.60					
WVFSYNC	7.42		CENT-Probe Probe 2 3/4 Centralizer	2.88	2.75	20.00

CCL	3.63		GR-Probe275dig (101010) Probe Gamma CCL	4.54	2.75	57.00
GR	0.89					
Dataset: uprr 1.db: field/well/run1/pass21.1 Total length: 20.04 ft Total weight: 199.00 lb O.D.: 2.75 in						