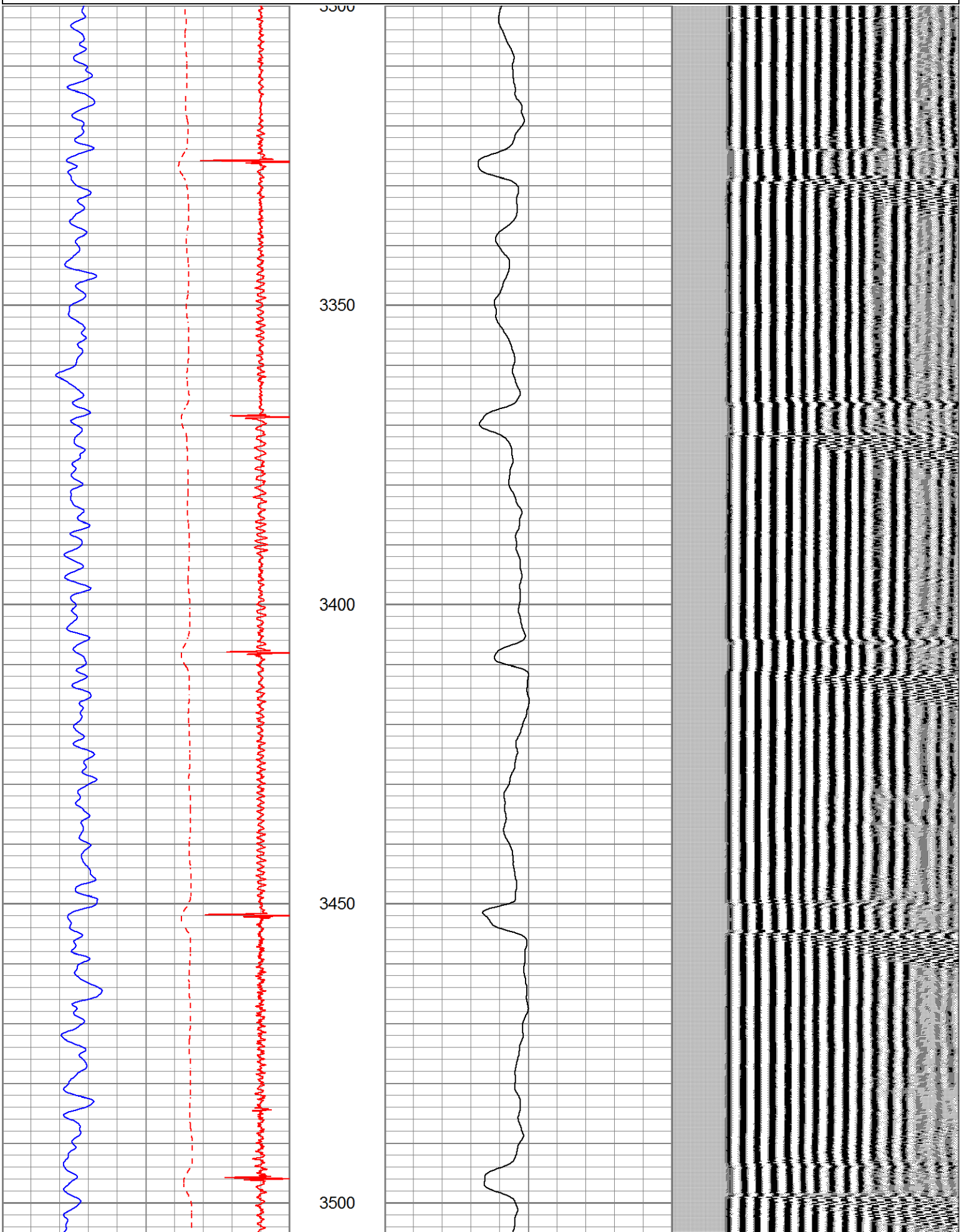


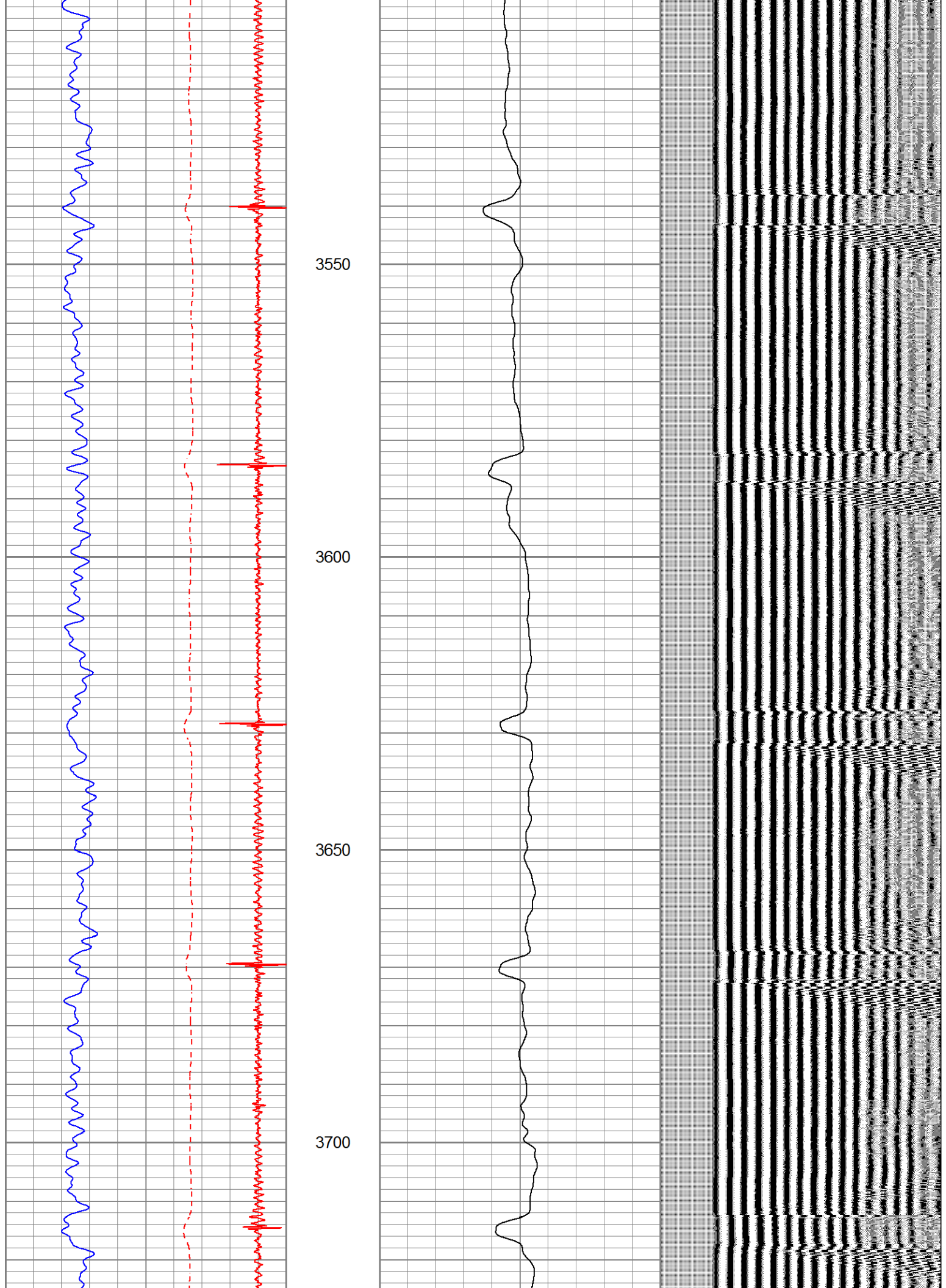


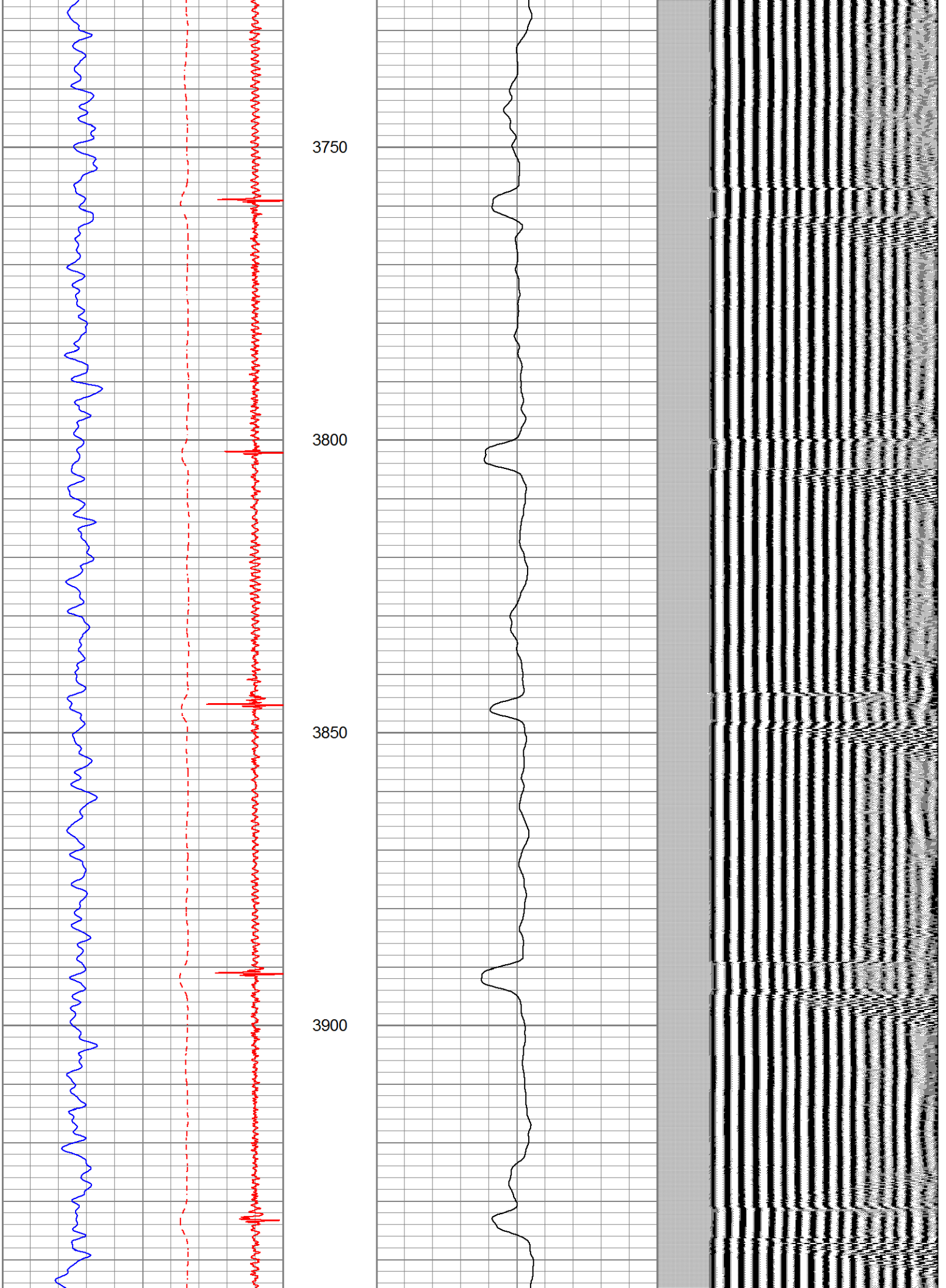
4.5	CCL	-0.5
0	Gamma Ray (GAPI)	300
400	TT3FT (usec)	200

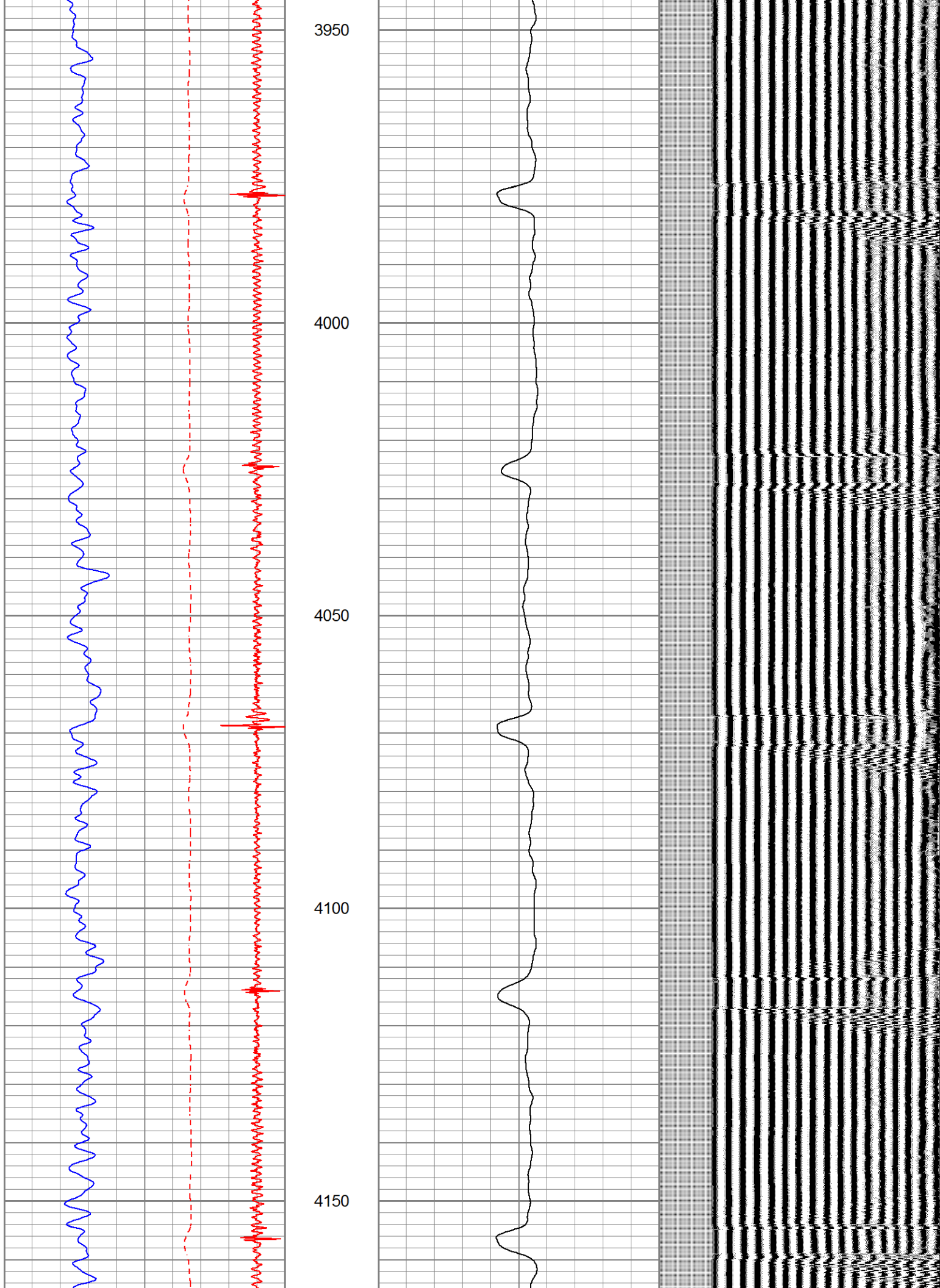
0	Amplified Amplitude (mV)	20	200
0	Amplitude (mV)	100	

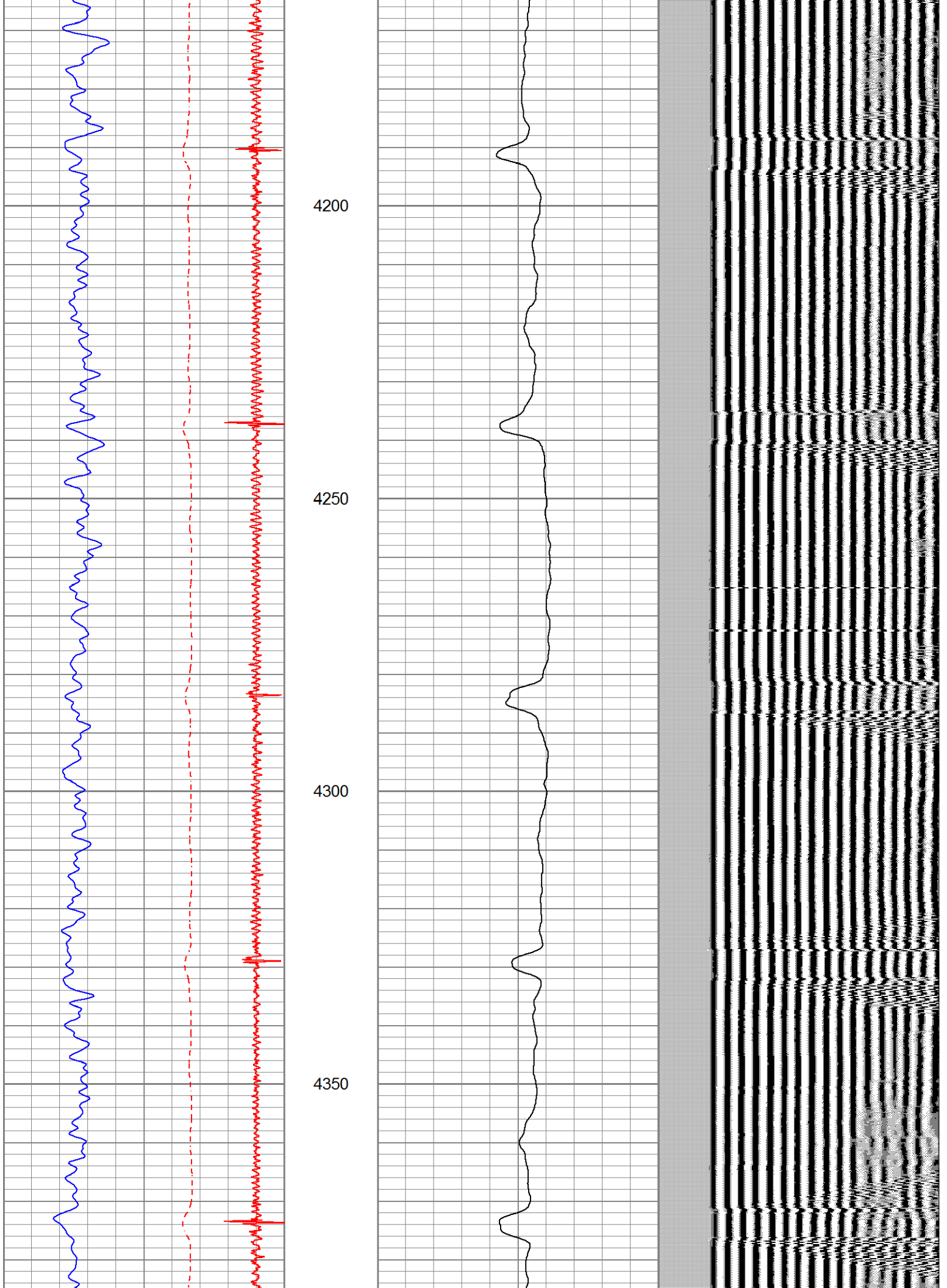
Variable Density 1200

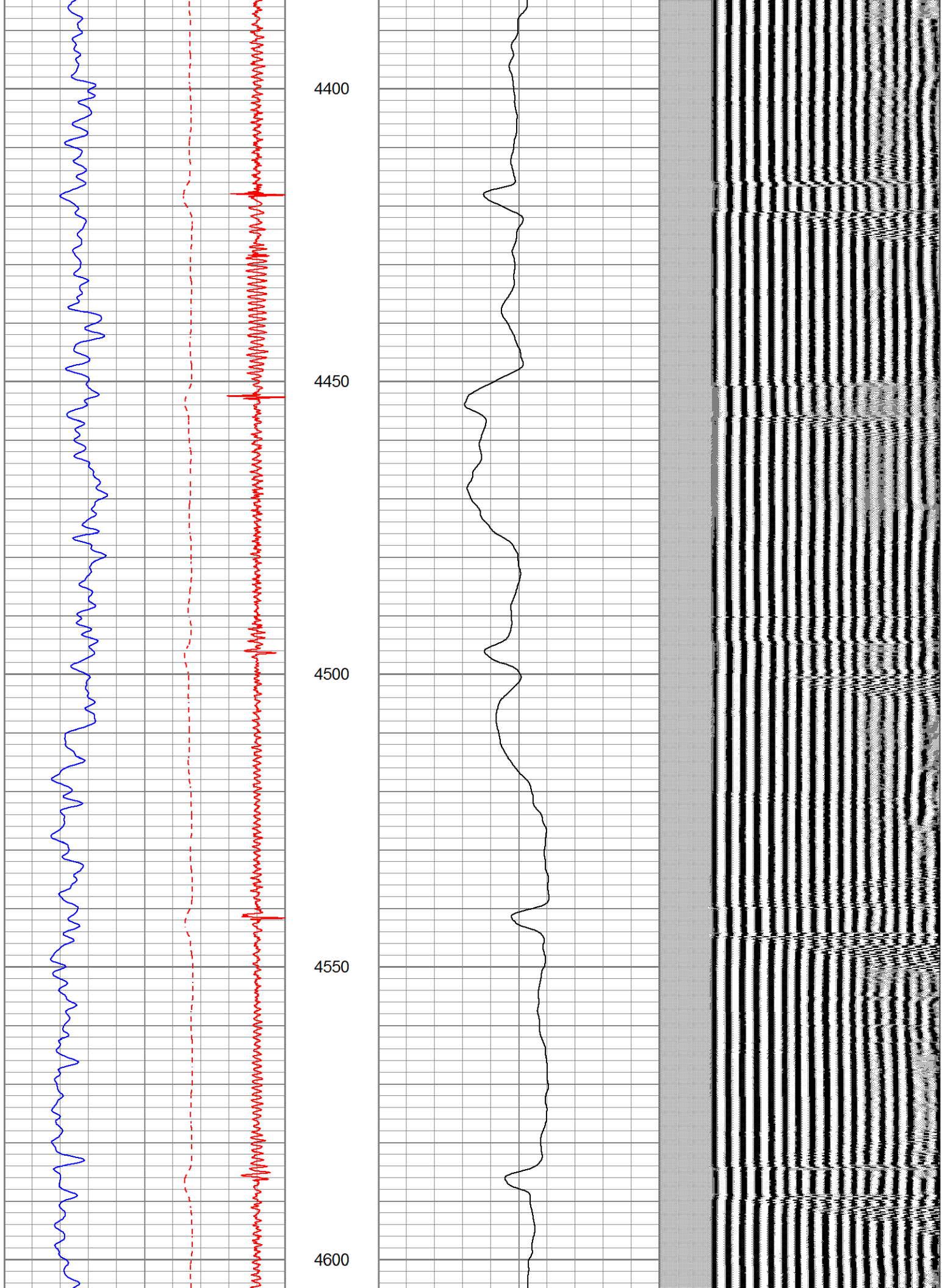


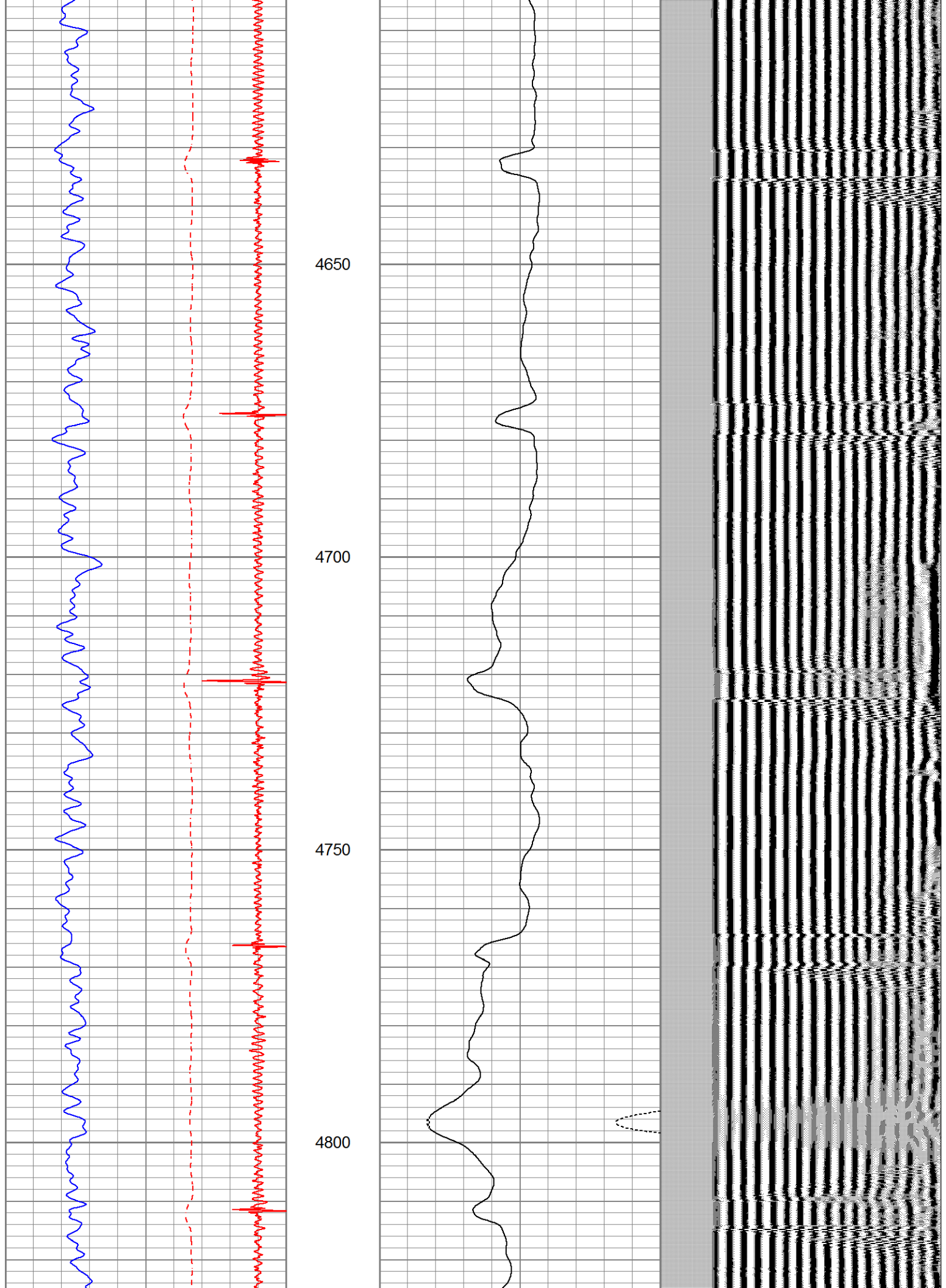


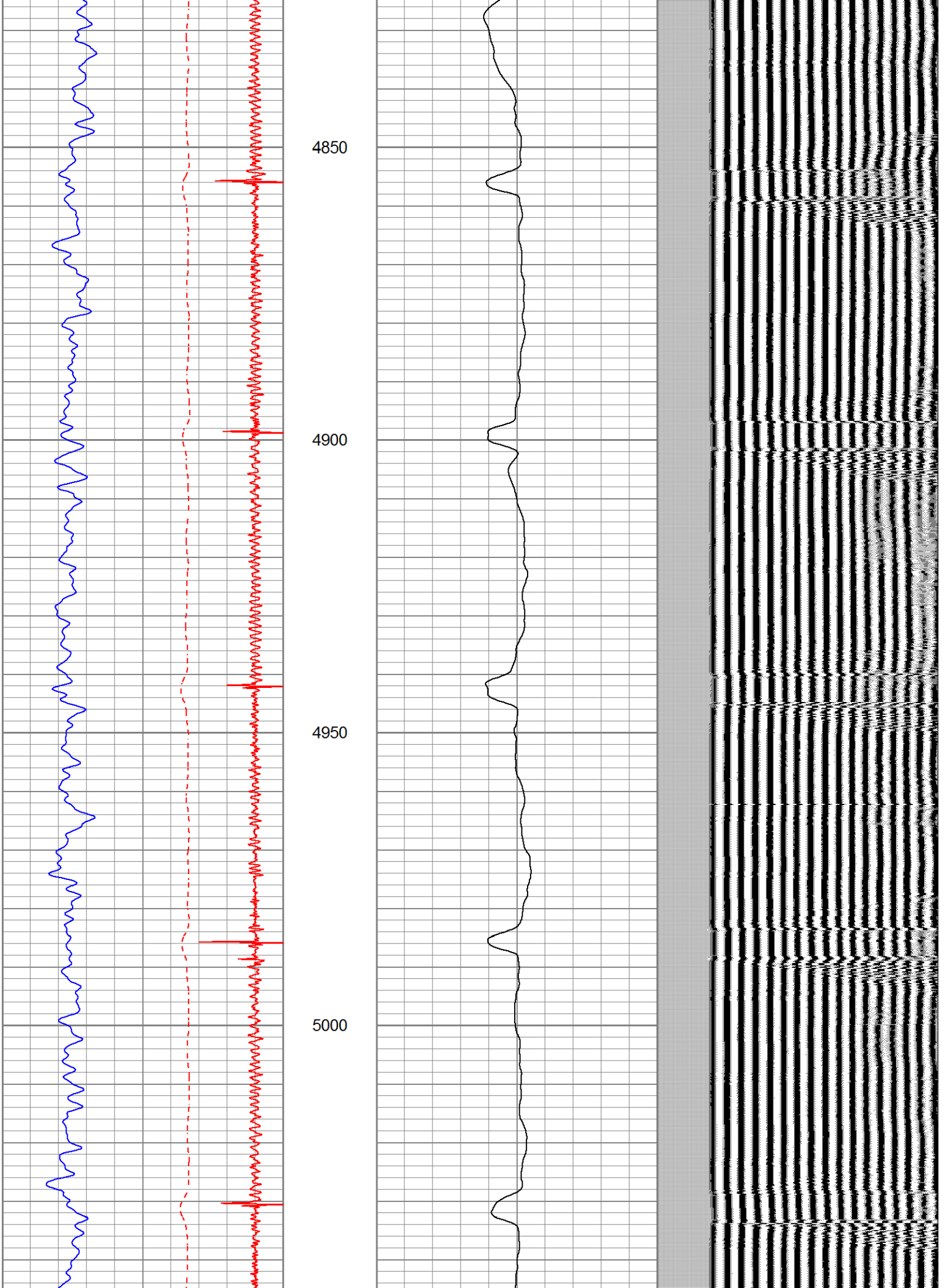


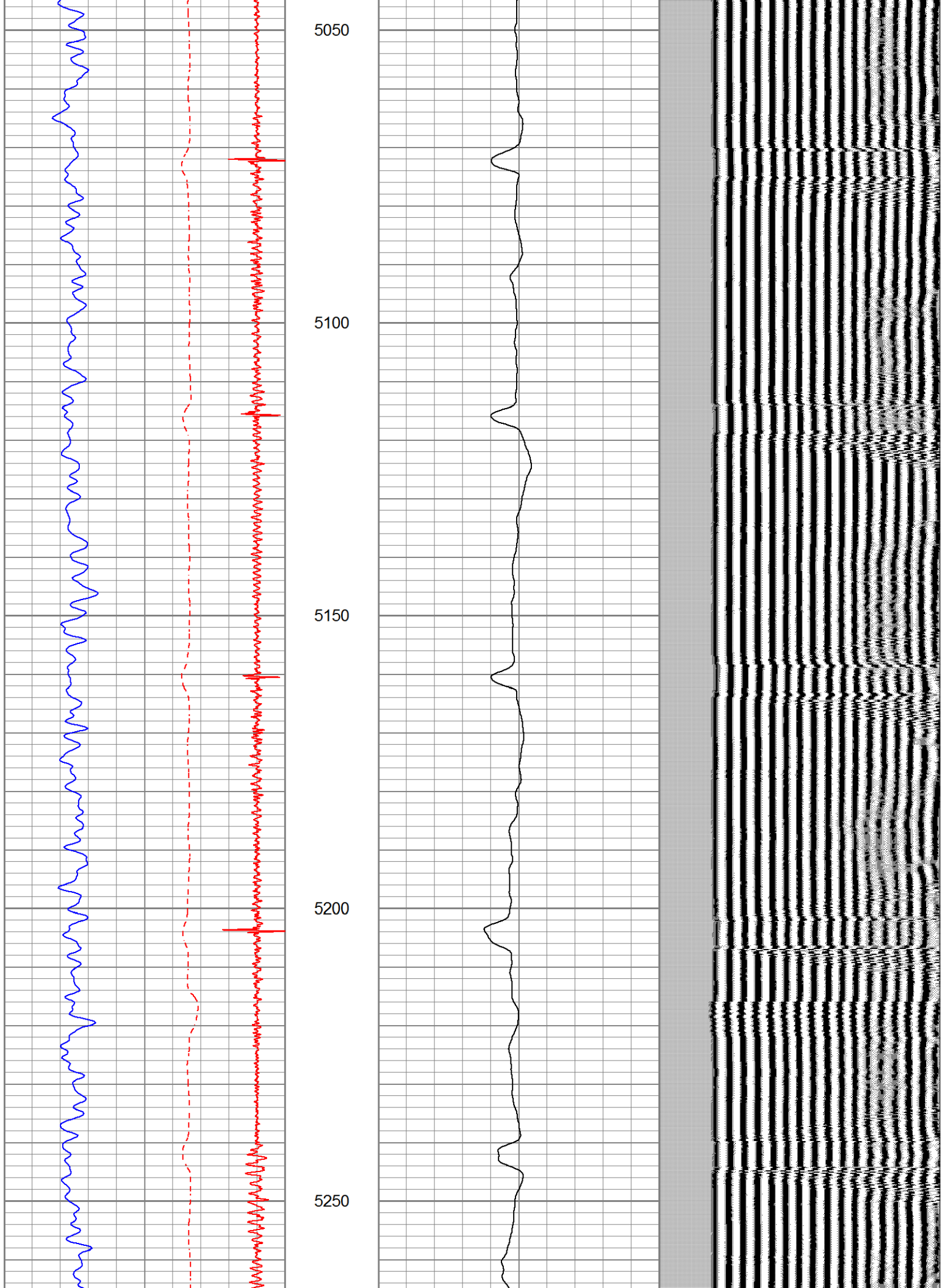


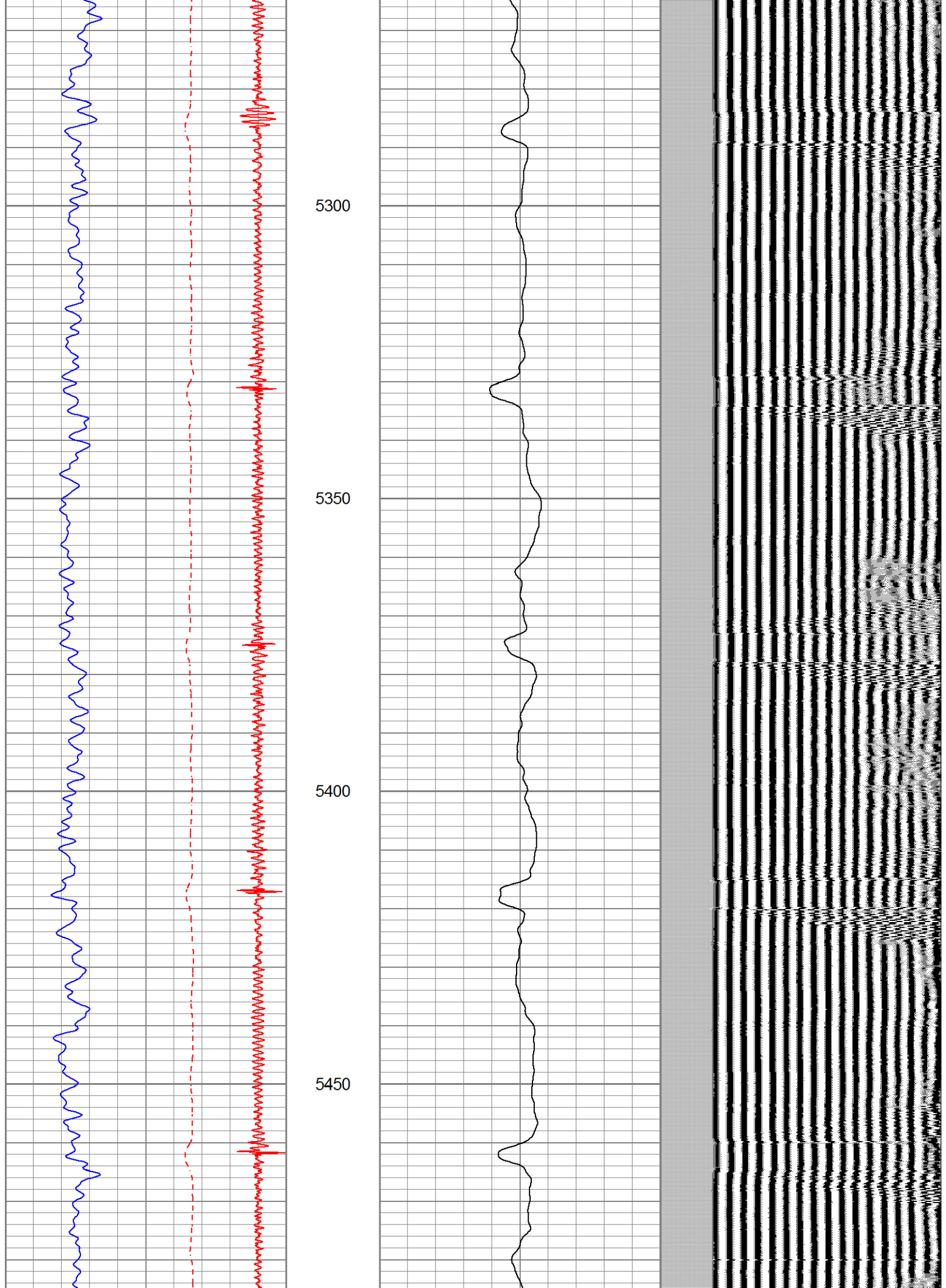


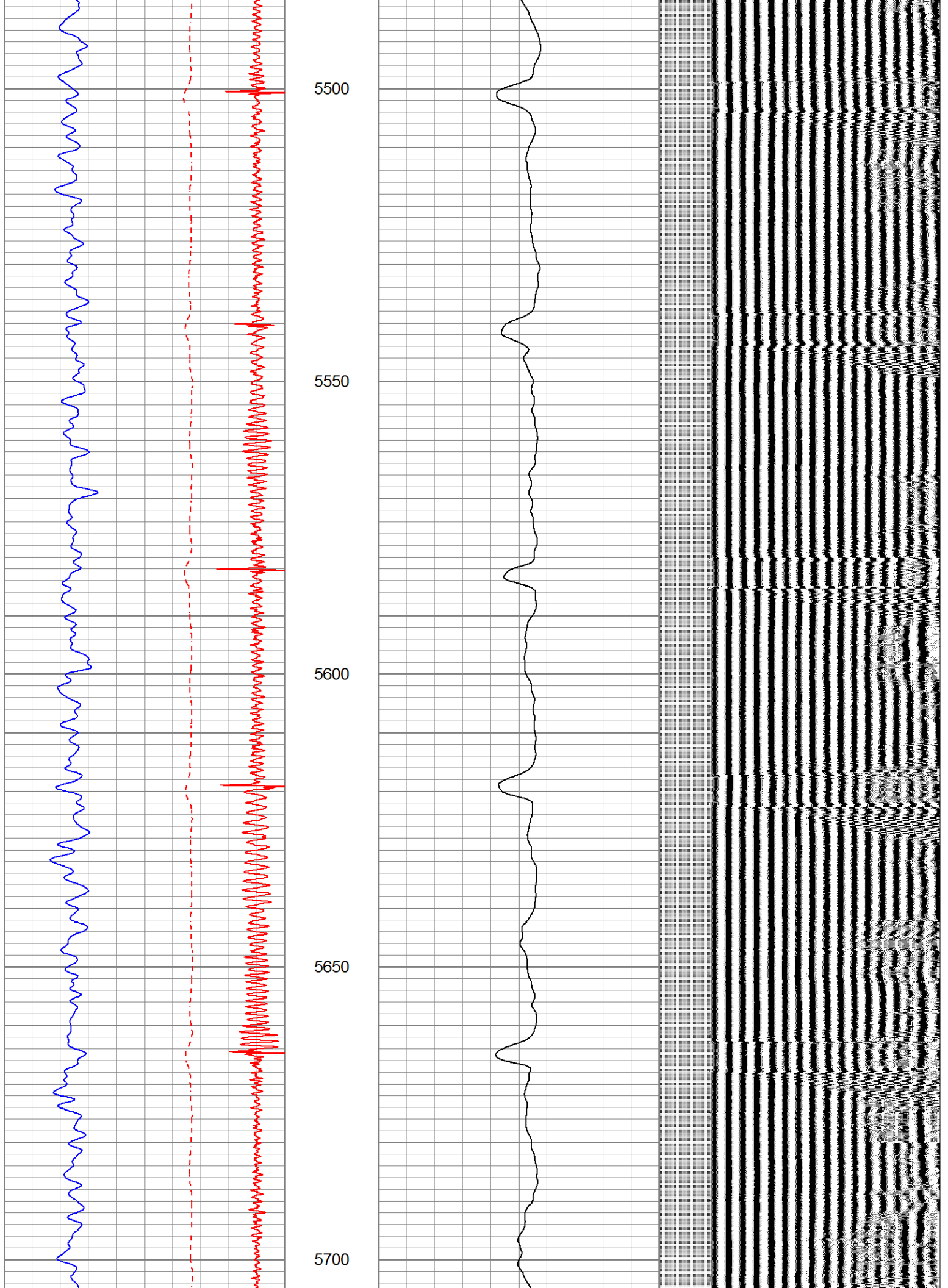


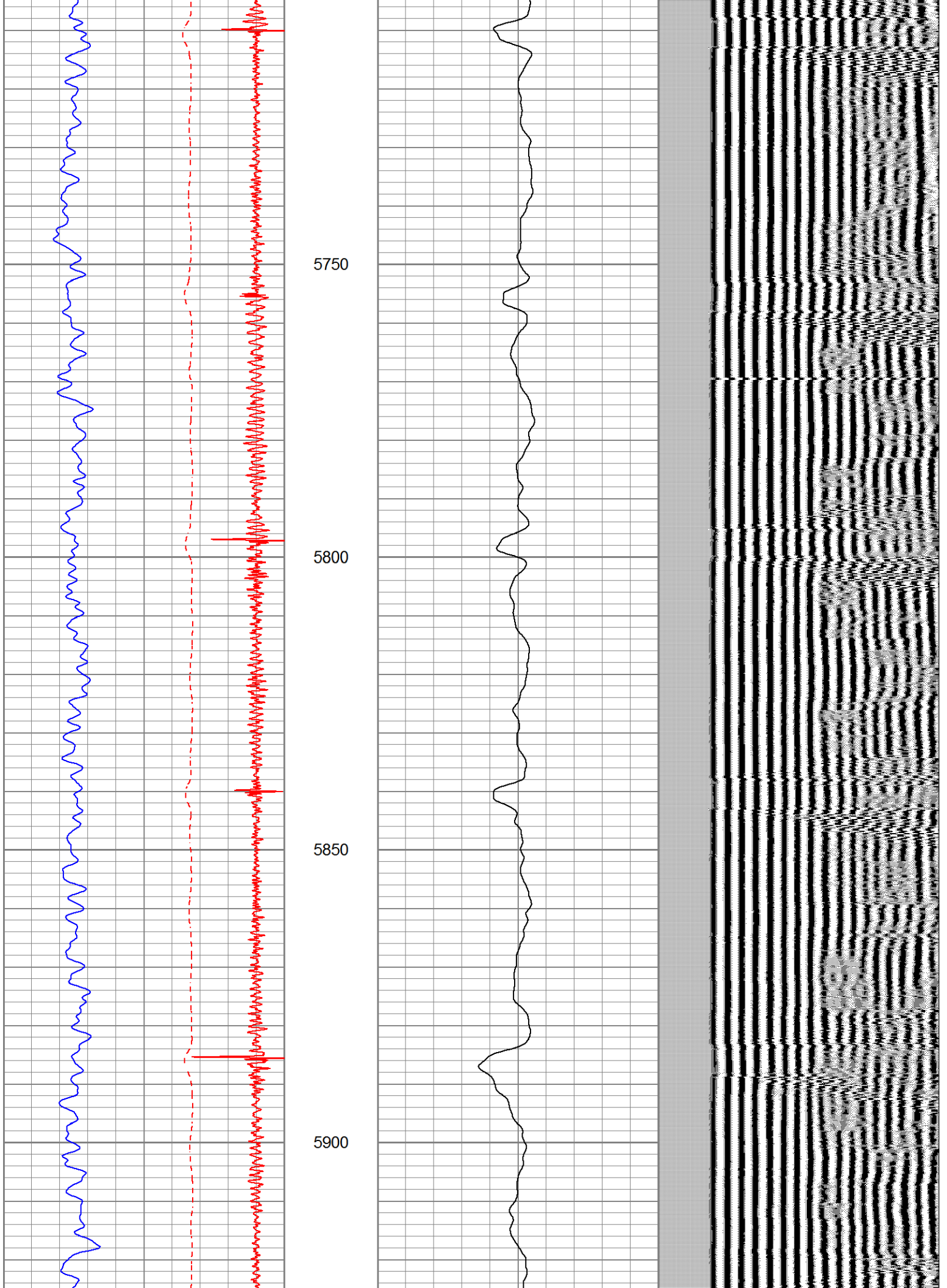


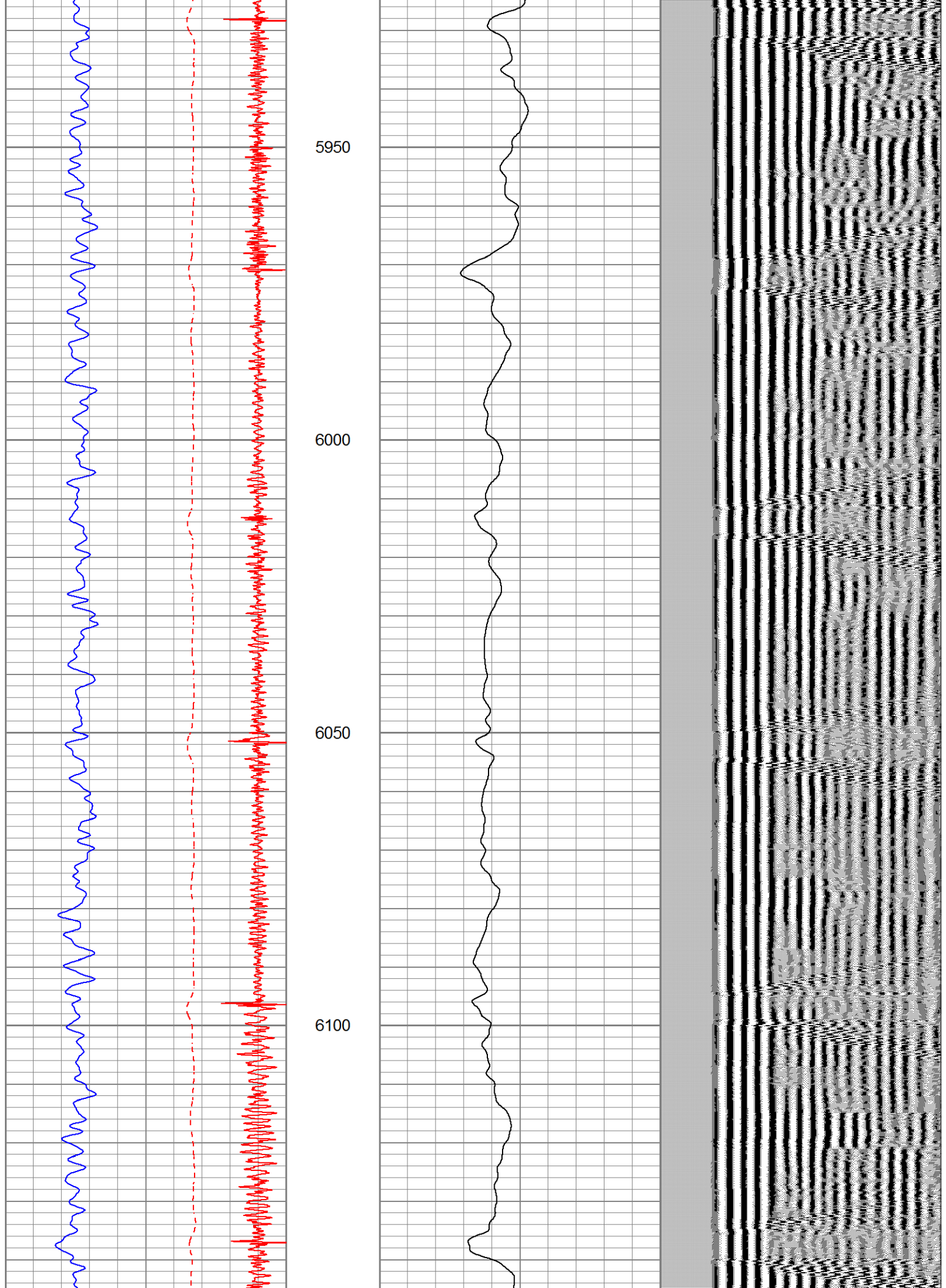


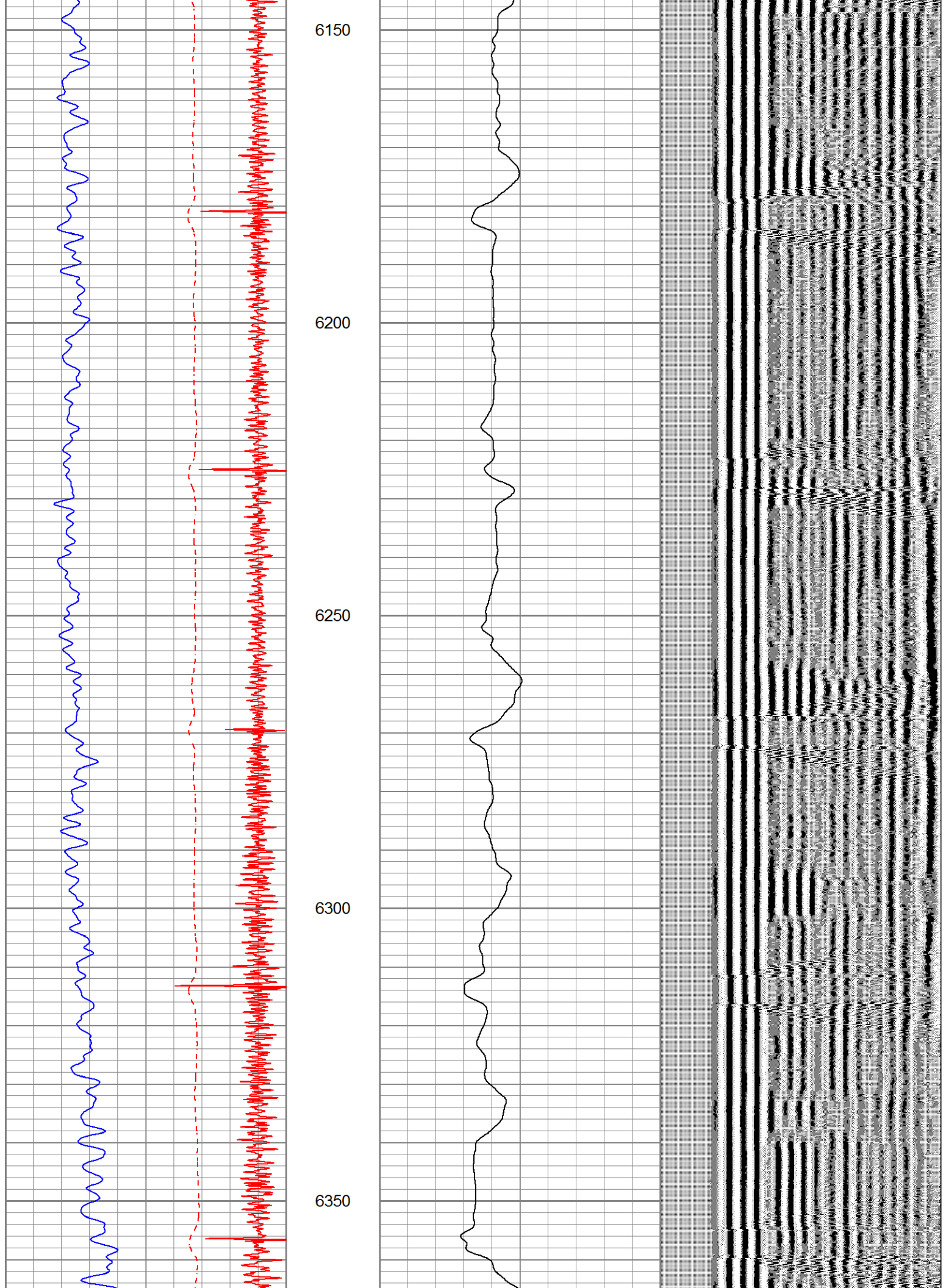


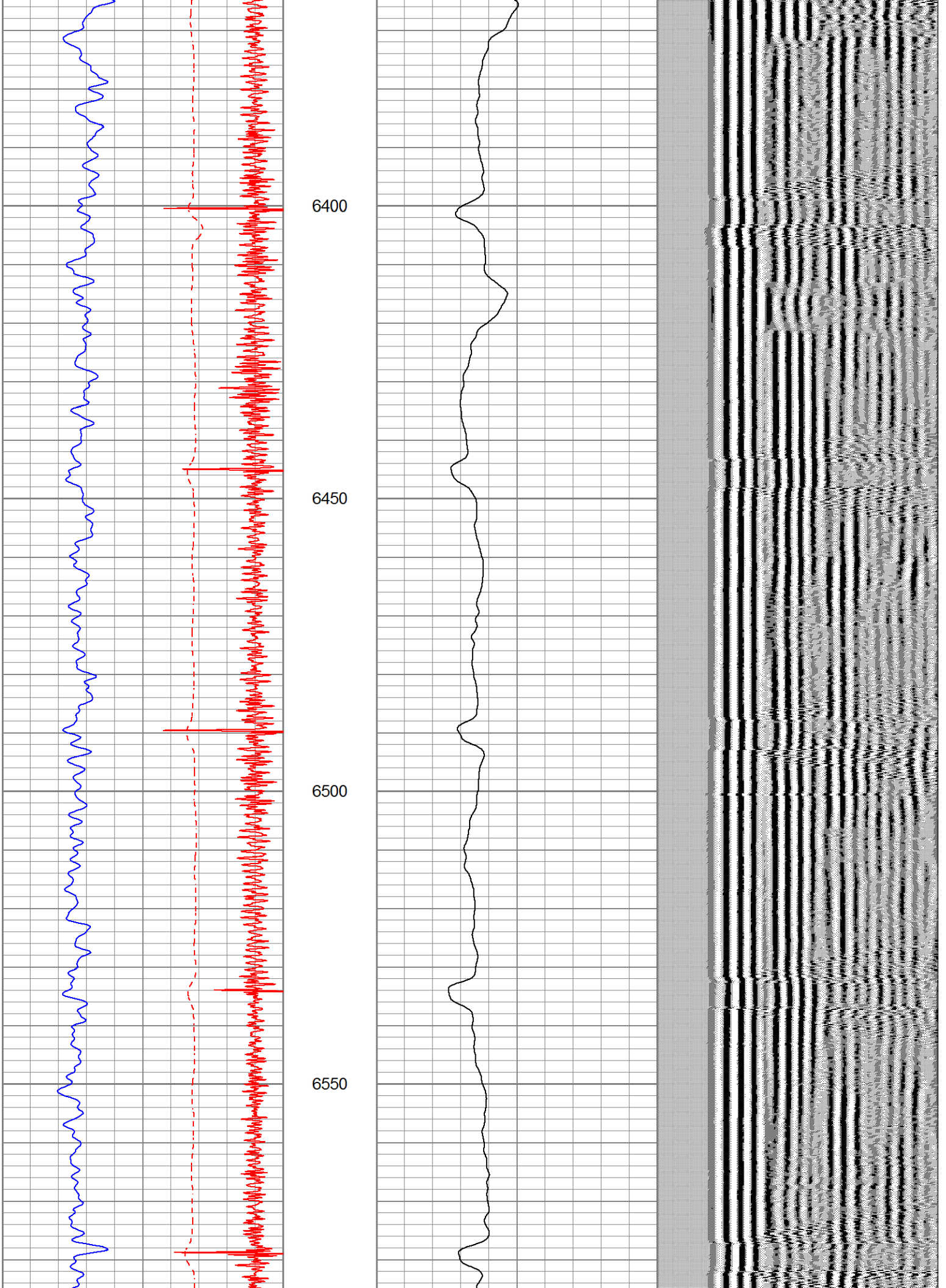


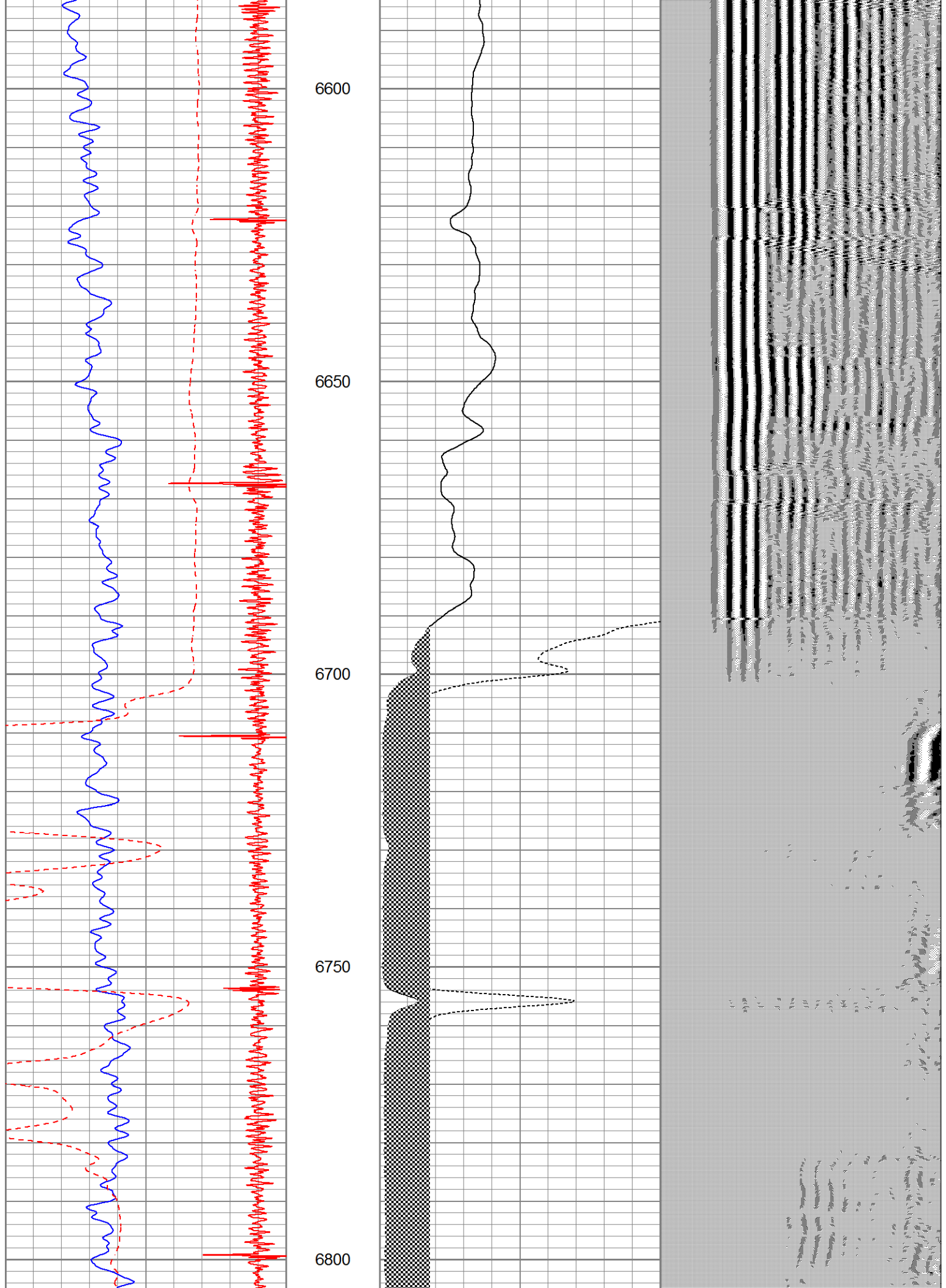


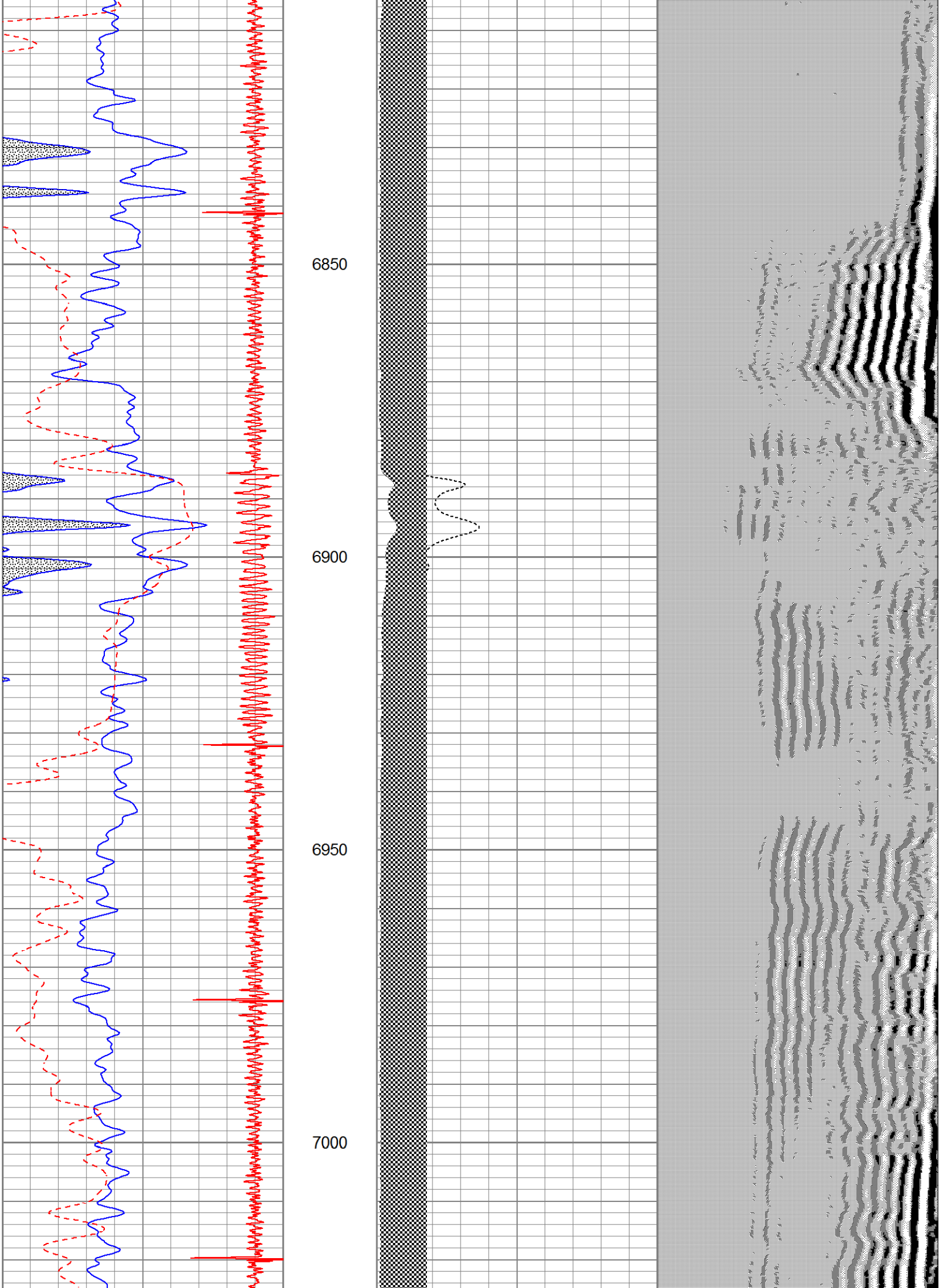


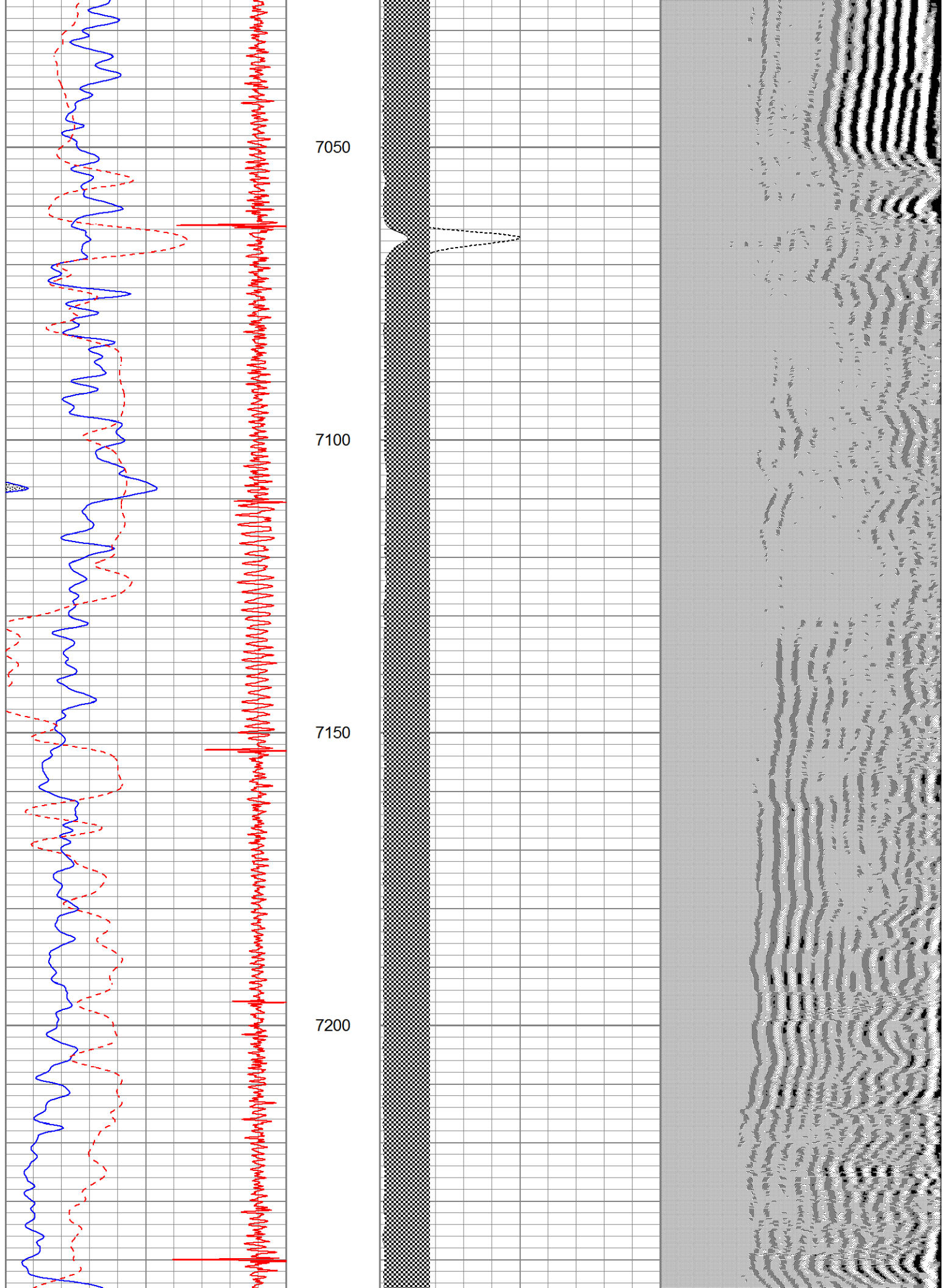


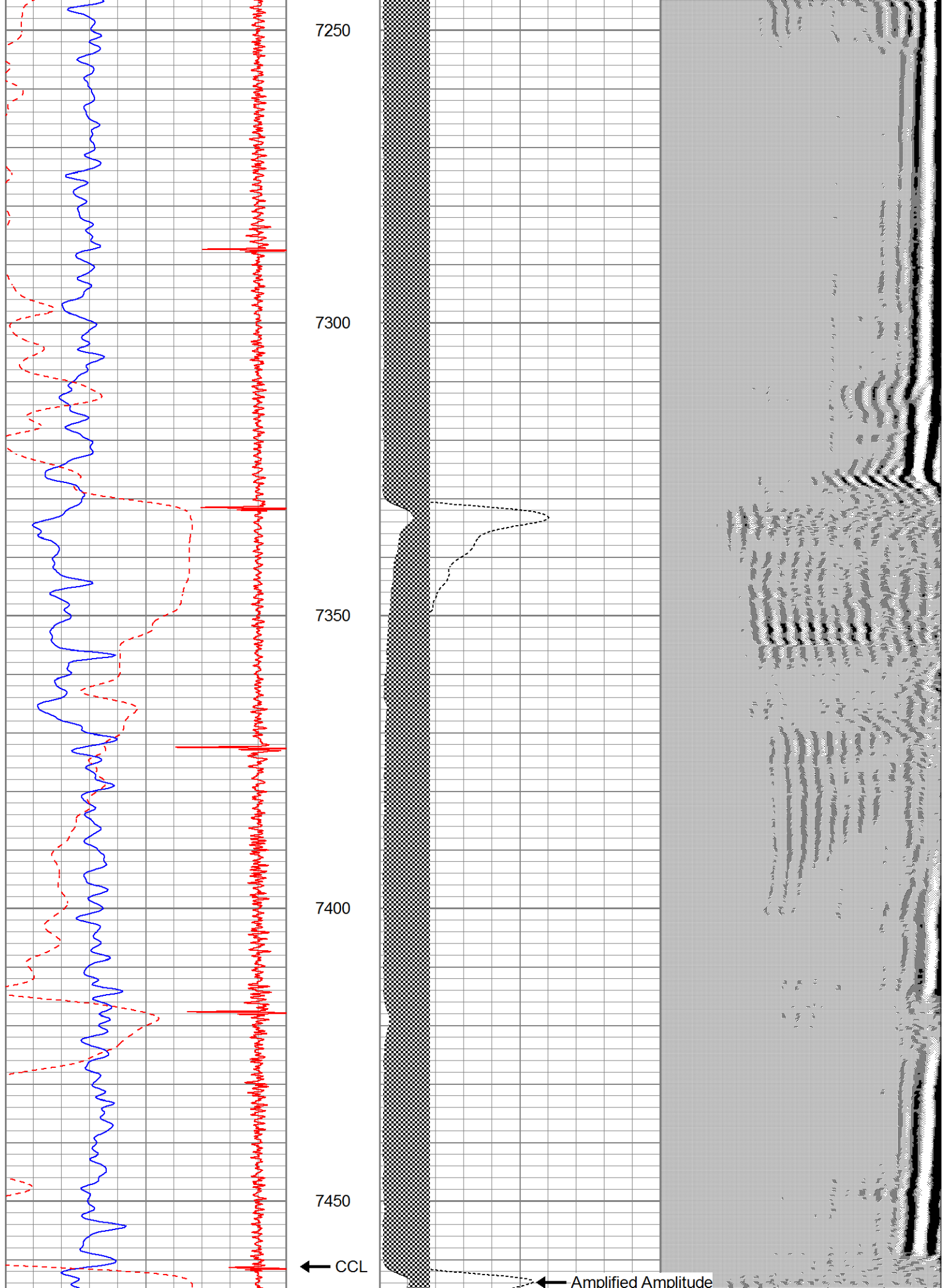


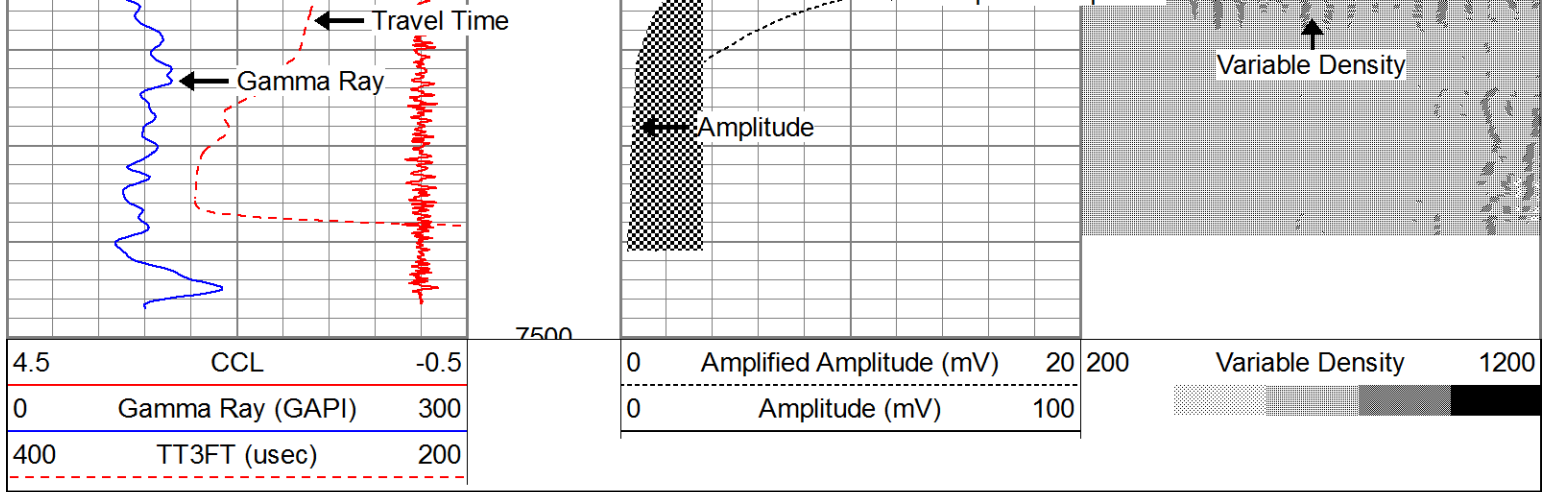












**Calibration Report**

Database File      uprr 1.db  
 Dataset Pathname    pass9  
 Dataset Creation    Mon Feb 21 15:09:30 2022

**Gamma Ray Calibration Report**

Type / Serial:                      Probe275dig / 101010

SHOP CALIBRATION		Wed Feb 27 07:52:48 2013			
	Counts/Sec.	Gain	Offset	Jig	Units
Background	0.0				cps
Calibrator	1.0	0.6500			cps GAPI/cps
PRIMARY VERIFICATION					
Background	0.0				cps
Calibrator	0.0				cps
Difference				0.0	GAPI
BEFORE SURVEY VERIFICATION					
Background	0.0				cps
Calibrator	0.0				cps
Difference				0.0	GAPI
AFTER SURVEY VERIFICATION					
Background	0.0				cps
Calibrator	0.0				cps
Difference				0.0	GAPI

**Segmented Cement Bond Log Calibration Report**

Serial Number:	110802		
Tool Model:	Probe275Digital		
Calibration Casing Diameter:	5.500	in	
Calibration Depth:	5415.342	ft	

Master Calibration, performed Mon Feb 21 15:00:22 2022:

	Raw (v)		Calibrated (mv)		Results	
	Zero	Cal	Zero	Cal	Gain	Offset
3'	-0.012	1.571	1.000	71.921	44.807	1.534

CAL						
5'	-0.012	1.561	1.000	71.921	45.101	1.537
SUM						
S1						
S2						
S3						
S4						
S5						
S6						
S7						
S8						

Internal Reference Calibration, performed (Not Performed):

	Raw (v)		Calibrated (v)		Results	
	<u>Zero</u>	<u>Cal</u>	<u>Zero</u>	<u>Cal</u>	<u>Gain</u>	<u>Offset</u>
CAL						

Air Zero Calibration, performed (Not Performed):

	Raw (v)		Calibrated (v)		Results	
	<u>Zero</u>		<u>Zero</u>		<u>Offset</u>	
3'	0.000		0.000		0.000	
5'	0.000		0.000		0.000	
SUM						
S1						
S2						
S3						
S4						
S5						
S6						
S7						
S8						