



00278626

RECEIVED

DEC 16 1985

COLO. OIL & GAS CONS. COMM.

WELL DATA SUMMARY

Operator: Rex Monahan

Well: #1 Lola E.

Location: CNENE Section 32-T12N-R54W, 6th P.M.
Logan County, Colorado

Elevation: 4752' GL, 4762' KB

Spud: 8-6-80

Completed: 8-11-80

Total Depth: 5866' Driller, 5866' Logger

Casing:

1. Ran 9 jts. 8 5/8", 330', set @ 340' KB w/175 sacks of cement.
2. Ran 5 1/2" production string to approximately 5865'.

Cores: None

Dst's: None

Electric Logs:

1. Schlumberger Induction-SFL from 5860' to 340'.
2. Schlumberger Compensated Formation Density Log from 5855' to 5570'.

Hole Size: 7 7/8"

Samples: Examined and discarded

Rig Type: National T-32, double

Contractor: Gear Drilling Co., rig #2

Pusher: Gene Malaby

Mud: Fresh Gel

Status: ~~2 hour~~ ^{2 hr} process of completing for "D" Sand production.

RECEIVED

DEC 18 1935

GOLD. OIL & GAS CONS. COMM.

ELECTRIC LOG TOPS

<u>FORMATION</u>	<u>DEPTH</u>	<u>SUBSEA</u>
Niobrara	4879'	- 117'
Carlile	5247'	- 485'
Greenhorn	5459'	- 647'
"X" Bentonite	5604'	- 842'
"D" Sand	5709'	- 947'
"J" Sand	5824'	-1062'
Total Depth	5866'	

SAMPLE DESCRIPTIONS

Ditch samples were collected and examined under the microscope and ultraviolet light for indications of oil, gas, and reservoir quality. Five foot samples were collected from 5695' to 5899' Total Depth. Sample depths have been adjusted to correspond with electric log measurements and characteristics.

5695'-5710'	Sh., dk. gray
5710'-5725'	"D" Sand - sdst., wht-tan, m-m.crs, low to fair poro., bright yellow fl., fair cut after crushing, some free sd., mg., rd., sr.
5725'-5730'	Sdst., gray, vfg., speckled, cf., q'tzitic, no poro., no shows.
5730'-5755'	Sdst., wht., mg., sr., low to fair vis poro., stncl., bright yellow fp., fair cut aft. crushing, some sckt., a.a., w/fair immed. cut.
5755'-5800'	Sh., dk. gray
5800'-5825'	"J" Silt - sillst., brn-gray
5825'-5855'	"J" Sand - sdst., tan, fg., sr., cf., low to no poro., fnt. patchy fl., frt. cut.
5855'-5899'	Sdst., wht., mg-m.lg., rd., cf., no poro., no shows.

RECEIVED

DEC 6 1980

COLO. OIL & GAS CONS. COM.

CHRONOLOGICAL SUMMARY

8- 6-80 MIRU, spudded, set surface and cemented, plug down
3:15 pm, W.O.C. until 11:00 pm, drilling last
returns at 680', regained.

8- 7-80 Drilling 1675' @ 7:00 am

8- 8-80 Drilling 3525' @ 7:00 am, trip for bit #2, drlg.

8- 9-80 Drilling 5235' @ 7:00 am, mud up, trip for bit
#3, drlg., trip for bit #4.

8-10-80 Drilling 5732' @ 7:00 am, finish trip for bit
#4, drlg., trip for bit #5, drlg.

8-11-80 5866' Total Depth @ 6:00 am, circ. for logs until
7:15 am, trip out until 9:00 am, wait on loggers
until 10:00 am, logging until 2:00 pm, trip in
hole w/bit #6, drlg., reached new Total Depth
5899' @ 8:05 pm, circ. until 9:05 pm, out of hole
laying down drill pipe until 11:05 pm, prep to
run 5 1/2" long string.

BIT RECORD

<u>RUN NO.</u>	<u>MAKE</u>	<u>SIZE</u>	<u>TYPE</u>	<u>DEPTH OUT</u>	<u>FTGE.</u>	<u>HOURS</u>
1	Smith	7 7/8"	DTJ	3525'	3180'	26 1/4
2	Smith	7 7/8"	DTJ	5275'	1750'	20 3/4
3	Hughes	7 7/8"	OSC3J	5720'	445'	10
4	Hughes	7 7/8"	J33 (RR)	5736'	16'	7 1/4 (Green)
5	Hughes	7 7/8"	OSCIG	5866'	129'	17
6	Smith	7 7/8"	DTJ (Retip)	5899'	33'	4 1/4

DEVIATIONDEPTH

1087'
1517'
2012'
2508'
3034'
3527'
4053'
4362'
5275'

DRIFT

1/2°
3/4°
1°
1 1/2°
1°
1 1/2°
1 1/4°
1°
1/4°

Sula E file

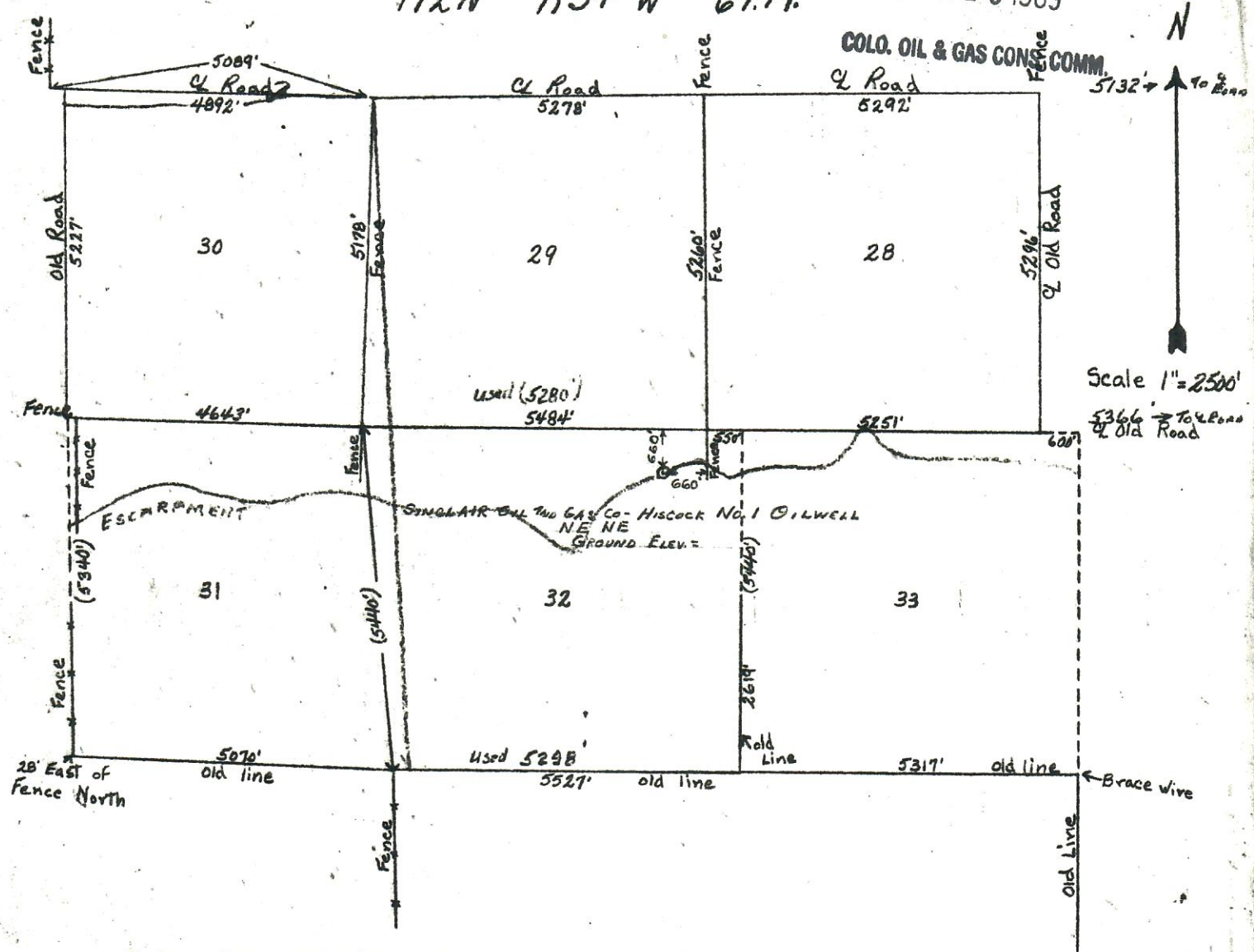
CERTIFICATE OF SURVEY
for
Sinclair Oil and Gas Co.

RECEIVED

T12N R54W 6PM.

DEC 16 1985

COLO. OIL & GAS CON. COMM.



I hereby certify that the above plat is an accurate representation of a correct survey showing the location of Sinclair Oil and Gas Co. - Hiscock No. 1 Oilwell located in the NE 1/4 Sec. 32 T12N R54W 6 PM. The elevation of the ground at the stake is _____ feet above sea level from U.S.C. & G. Bench Mark.

Fort Morgan, Colorado
May 24, 1955

Bevil J. Osborne
Registered Professional Engineer
State of Colorado