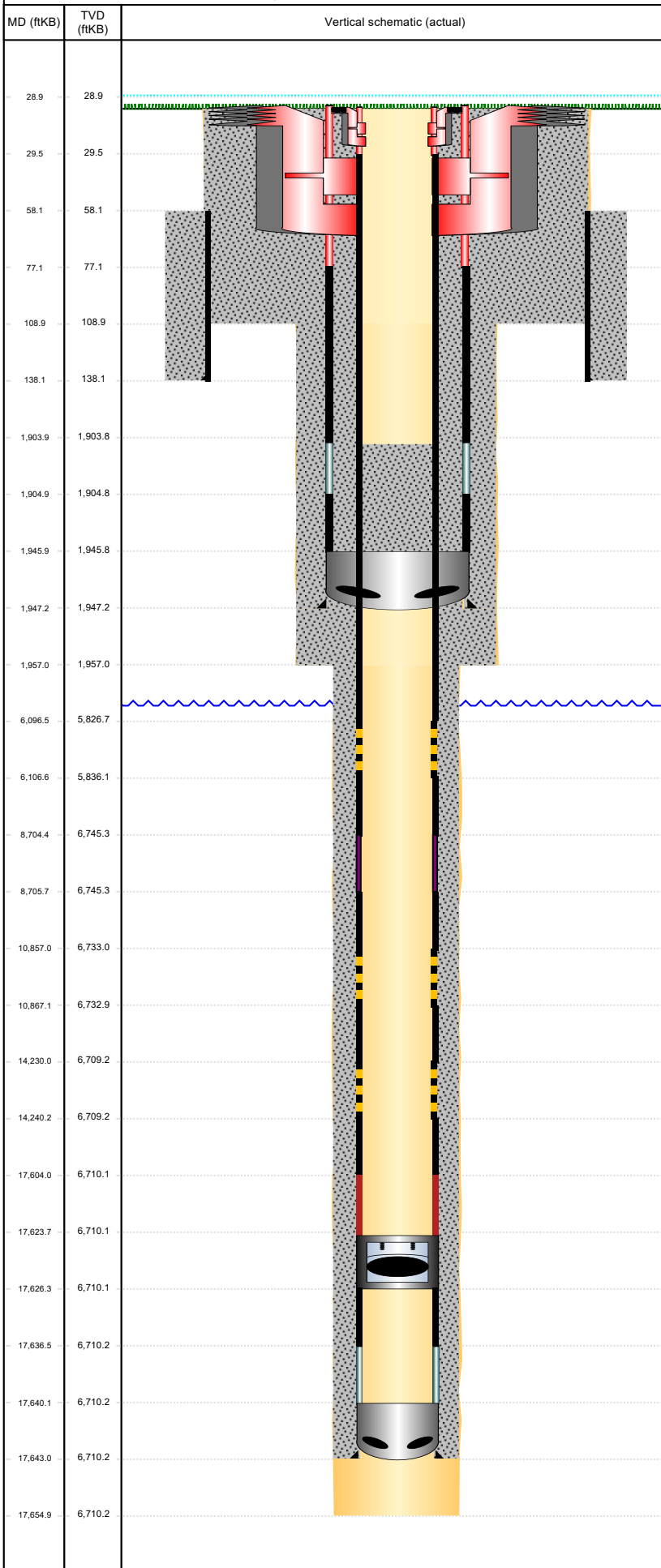


Land, Original Hole, 9/19/2022 9:41:22 AM



Well Header			
Surface UWI 0512349302	Business Unit Rockies	Gov Auth Dist	Prod Tree Loc Land
Original RKB Elevation (ft) 4,805.00	Original KB to Ground (ft) 29.00	Original Spud Date 8/5/2022	Abandon Date
Comment THERE IS AN EXCEPTION TO THE COGCC LOGGING REQUIREMENTS RULE 317.p. A cased-hole neutron log with gamma-ray log will be run from the kick-off point into the surface casing. See Sundry Doc. #402772752 dated 9/9/2021 for COA details.			
Directions To Well CR 40 & 57, S 1, E INTO BOOTH PROPERTY GATE, FOLLOW RD 2 MI EAST, N 1, E 0.5, S INTO			
Congressional Location			
Quarter 3 NW	Quarter 4 NW	Section 31	Township 4
Township N/S Dir N	Range 63	Range E/W Dir W	
Bottom Hole Legal Location			
Bottom Hole Legal Location			
Plug Back Total Depths			
Date	PBTD (ftKB)	Method	Com
Wellbore Sections			
Section Des	Hole Size (in)	Act Top (ftKB)	Act Btm (ftKB)
CONDUCTOR	26	29.0	109.0
SURFACE	13 1/2	109.0	1,957.0
PRODUCTION	8 1/2	1,957.0	17,655.0
Zone Statuses			
Zone Name	Status Date	Status	Fluid Type
Casing Strings			
Conductor, Planned?-N, 138ftKB			
Casing Description	Run Date	OD (in)	Wt/Len (lb/ft)
Conductor	8/1/2022	26	125.00
			Grade
			X-56
			Top Depth (ftKB)
			58
			Set Depth (ftKB)
			138
SURFACE, Planned?-N, 1947.3ftKB			
Casing Description	Run Date	OD (in)	Wt/Len (lb/ft)
SURFACE	8/6/2022	9 5/8	36.00
			Grade
			J-55
			Top Depth (ftKB)
			29
			Set Depth (ftKB)
			1947.3
Production Casing, Planned?-N, 17643.2ftKB			
Casing Description	Run Date	OD (in)	Wt/Len (lb/ft)
Production Casing	8/14/2022	5 1/2	17.00
			Grade
			P-110
			Top Depth (ftKB)
			29
			Set Depth (ftKB)
			17643.2
Cement			
Description		Top Depth (ftKB)	Bottom Depth (ftKB)
Conductor Cement		58.0	138.0
Description		Top Depth (ftKB)	Bottom Depth (ftKB)
Surface cement job		29.0	1,947.3
Description		Top Depth (ftKB)	Bottom Depth (ftKB)
Production Casing Cement		29.0	17,643.2
Tubing Strings			
Tubing Description	Run Date	String Make	ID (in)
TUBING - PRODUCTION			
			Wt (lb/ft)
			Grade
			Len (ft)
			Set Depth
Other In Hole			
Run Date	Des	Make	OD (in)
			Top (ftKB)
			Btm (ftKB)
			Planned
Logs			
Date	Type	Depth Top (MD) (ftKB)	Btm (ftKB)