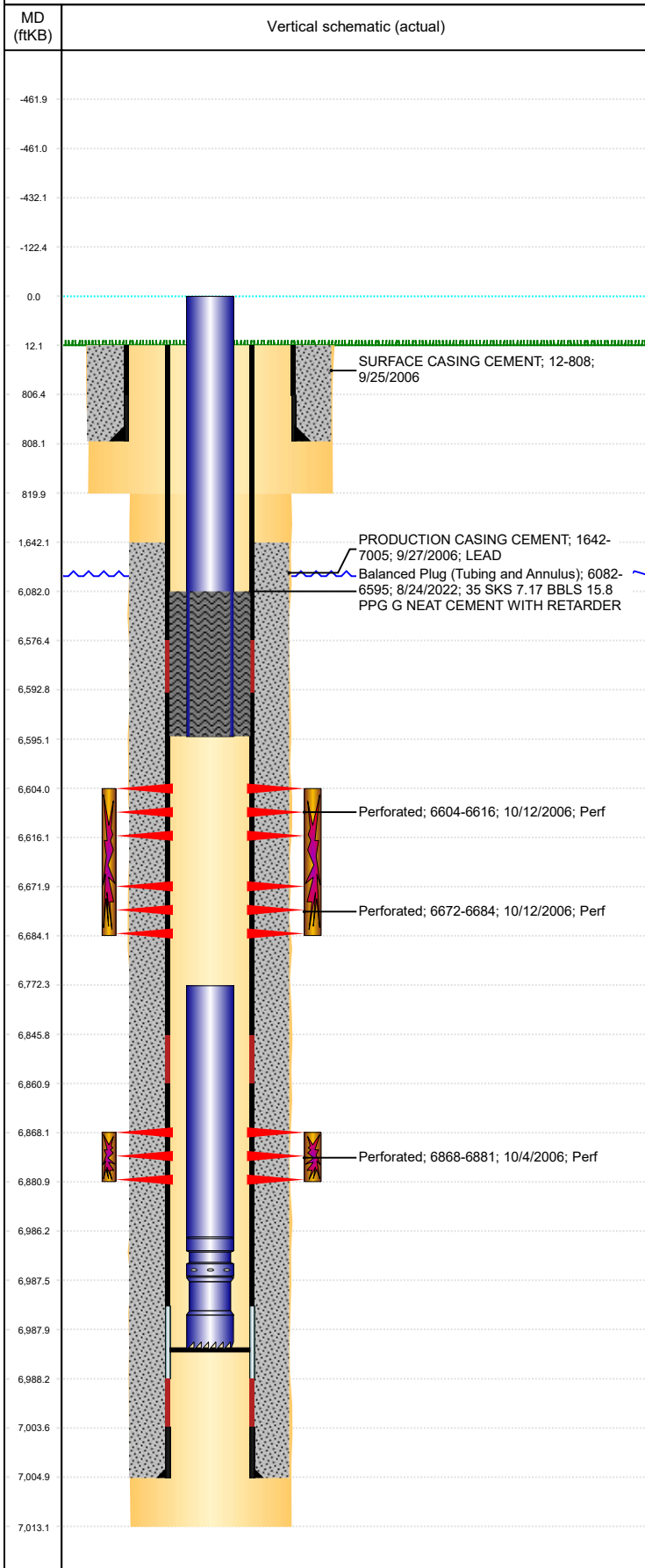




P&A Wellbore For State

Well Name: NOVACEK C28-17

Land, Original Hole, 9/16/2022 9:32:32 AM



Well Header									
Surface UWI 0512327281			Business Unit Rockies			Gov Auth Dist		Prod Tree Loc Land	
Orig. KB to Gnd (ft) 12.00		Original Spud Date 9/24/2006		Abandon Date		Well Sub-Status TA			High... N
Comment 4/11/07- DRILL OUT & PUSH CIFT TO 6988'. STATE SHOWS SHUT IN SINCE NOV 2016.									
Surface Location (Congressional)									
Qtr 3 NW	Qtr 4 NE	Section 28	Twnshp 4	Twnsh... N	Range 64	Rng E... W	Latitude (°) 40.28705575	Longitude (°) -104.551696045	
Wellbore Sections									
Section Des			Hole Size (in)			Act Top (ftKB)		Act Btm (ftKB)	
SURFACE			12 1/4			12.0		820.0	
PRODUCTION			7 7/8			820.0		7,013.0	
Casing Strings									
Csg Des		Run Date		OD (in)	Wt/Len (lb/ft)	Grade	Top Depth (MD) (ftKB)	Set Depth (MD) (ftKB)	
Surface		9/25/2006		8 5/8	24.00	J-55	12	808	
Production Casing		9/27/2006		4 1/2	11.60	M-80	12	7005	
Cement									
Des				Start Date		Top (ftKB)		Btm (ftKB)	
SURFACE CASING CEMENT				9/25/2006		12.0		808.0	
PRODUCTION CASING CEMENT				9/27/2006		1,642.0		7,005.0	
Balanced Plug (Tubing and Annulus)				8/24/2022		6,082.0		6,595.0	
Zone Statuses									
Zone Name		Status Date	Status	Fluid Type	Job			Prod Method	
NIOBRARA		1/29/2010	PR		Abandon Well - Permanent, 8/19/2022 00:00			Flowing	
NIOBRARA		8/24/2022	Closed						
CODELL		4/8/2016	PR		Abandon Well - Permanent, 8/19/2022 00:00				
CODELL		8/24/2022	Closed						
Perforation Data									
Linked Zone			Explosive Type	Entered Shot Total	Top (ftKB)		Btm (ftKB)		Date
NIOBRARA, Original Hole				72	6,604.0		6,616.0		10/12/2006
NIOBRARA, Original Hole				72	6,672.0		6,684.0		10/12/2006
CODELL, Original Hole				52	6,868.0		6,881.0		10/4/2006
Stimulation Intervals									
Zone				Start Date		Top (ftKB)		Btm (ftKB)	
NIOBRARA, Original Hole				10/12/2006		6,604.0		6,684.0	
CODELL, Original Hole				10/12/2006		6,868.0		6,881.0	
Other In Hole									
Run Date		Des			Make		OD (in)	Top (ftKB)	Btm (ftKB)
Logs									
Date		Type					Depth Top (MD) (ftKB)		Btm (ftKB)
9/28/2006		COMPENSATED DENSITY					2,500		6,993.0
9/28/2006		INDUCTION					809		7,013.0
10/4/2006		CEMENT BOND					1,472		6,961.0
Plug Back Total Depths									
Date		Type			Com				PBTD (ftKB)
10/4/2006		FILL			DEPTH LOGGER ON CBL				6,963
4/11/2007		FILL			D/O & PUSH CIFT TO 6988', CIRC HOLE CLEAN				6,988