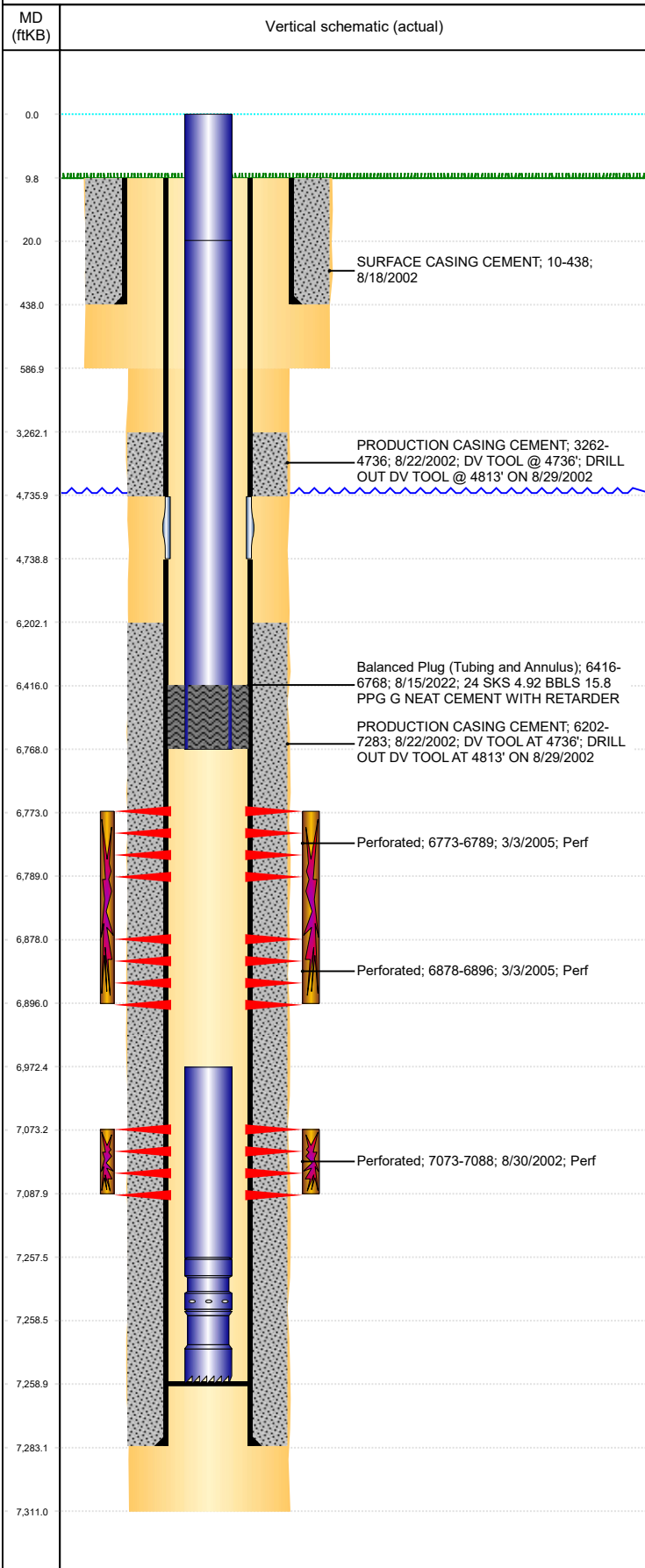




P&A Wellbore For State

Well Name: LEE G10-12X

Land, Original Hole, 9/16/2022 9:27:35 AM



Well Header									
Surface UWI 0512320328		Business Unit Rockies		Gov Auth Dist		Prod Tree Loc Land			
Orig. KB to Gnd (ft) 10.00		Original Spud Date 8/18/2002		Abandon Date		Well Sub-Status TA		High...	
Comment DV TOOL @ 4736'; DRILLED OUT DV TOOL @ 4813' 8/29/2002									
Surface Location (Congressional)									
Qtr 3 NW	Qtr 4 SW	Section 10	Twonshp 4	Twonsh... N	Range 65	Rng E... W	Latitude (°) 40.32479451 7	Longitude (°) -104.656052561	
Wellbore Sections									
Section Des		Hole Size (in)		Act Top (ftKB)		Act Btm (ftKB)			
SURFACE		12 1/4		10.0		587.0			
PRODUCTION		7 7/8		587.0		7,311.0			
Casing Strings									
Csg Des		Run Date		OD (in)	Wt/Len (lb/ft)	Grade	Top Depth (MD) (ftKB)	Set Depth (MD) (ftKB)	
Surface		8/18/2002		8 5/8	24.00	J-55	10	438	
Production Casing		8/22/2002		4 1/2	11.60	N-80	10	7283	
Cement									
Des		Start Date		Top (ftKB)		Btm (ftKB)			
SURFACE CASING CEMENT		8/18/2002		10.0		438.0			
PRODUCTION CASING CEMENT		8/22/2002		3,262.0		4,736.0			
PRODUCTION CASING CEMENT		8/22/2002		6,202.0		7,283.0			
Balanced Plug (Tubing and Annulus)		8/15/2022		6,416.0		6,768.0			
Zone Statuses									
Zone Name		Status Date	Status	Fluid Type	Job			Prod Method	
NIOBRARA		5/5/2005	PR	Gas	COMMINGLE ZONES, 5/3/2005 00:00				
NIOBRARA		8/15/2022	Closed		Abandon Well - Temporary, 8/9/2022 09:00				
CODELL		10/27/2016	SI						
CODELL		8/15/2022	Closed		Abandon Well - Temporary, 8/9/2022 09:00				
Perforation Data									
Linked Zone		Explosive Type	Entered Shot Total	Top (ftKB)	Btm (ftKB)	Date			
NIOBRARA, Original Hole			96	6,773.0	6,789.0	3/3/2005			
NIOBRARA, Original Hole			108	6,878.0	6,896.0	3/3/2005			
CODELL, Original Hole			60	7,073.0	7,088.0	8/30/2002			
Stimulation Intervals									
Zone		Start Date		Top (ftKB)		Btm (ftKB)			
NIOBRARA, Original Hole		3/28/2005		6,773.0		6,896.0			
CODELL, Original Hole		9/9/2002		7,073.0		7,088.0			
Other In Hole									
Run Date		Des		Make		OD (in)	Top (ftKB)	Btm (ftKB)	
Logs									
Date		Type				Depth Top (MD) (ftKB)	Btm (ftKB)		
8/22/2002		Compensated Density				4,300	7,291.0		
8/22/2002		Induction				438	7,311.0		
8/30/2002		CBL/CCL/GR				3,090	7,242.0		
Plug Back Total Depths									
Date		Type		Com			PBTD (ftKB)		
8/30/2002		FILL		DEPTH LOGGER ON CBL			7,247		
6/11/2008		FILL					7,259		