

# **EMERGENCY RESPONSE PLAN**

## **Carbon Storage Solutions, LLC**

Headquarters  
31375 Great Western Dr.  
Windsor, CO 80550

## **Carbon Storage Solutions – Front Range #1**

NW<sup>1</sup>/<sub>4</sub> SE<sup>1</sup>/<sub>4</sub>, Section 26, T6N, R67W, 6<sup>th</sup> P.M.

Lat: 40.454964, Long: -104.859761

Windsor, Colorado

Weld County

1. Site specific information
  - a. Site Safety Requirements
  - b. Emergency muster/assembly point(s)
  - c. 911 Address and GPS coordinates
  - d. Site description
  - e. Nearby schools and other areas of interest
  - f. Directions to project locations
  - g. Location of SDS sheets
  - h. Location of sign-in sheets, JSA, safety forms
2. Maps & Documents
  - a. Site Map
    - i. 2,000' Buffer and location of nearest Building Unit
    - ii. Access Map and Muster point
    - iii. 2,500' Buffer zone
3. List of Emergency Contacts
  - a. CSS contact information
  - b. First responder contact information
  - c. Regulatory contact information
  - d. Nearest hospital
4. Spill Response
  - a. Spill Response
5. Evacuation Information
  - a. Evacuation plan procedures (public)
6. Coordination with First Responder Agencies
7. Appendix 1A. Tactical Response Card

## Section 1

### Site Specific Information

#### **1. Site Safety Requirements and General Information**

The minimum personal protective equipment (PPE) to enter any CSS production includes hard hat, safety glasses, safety glasses, safety toe boots, fire resistant clothing (FRC), and a 4-gas monitor. All contractors and visitors are responsible for providing their employees with the appropriate training on and use PPE while on CSS locations. In addition, all contract personnel entering an CSS location to perform work must understand and abide by CSS' contractor expectations relating to environmental, health, and safety requirements.

The primary hazards that any person must be aware of while on a CSS location include, but are not limited to, the potential for release of hydrocarbon gases and/or liquids from drilling equipment/tanks, heavy truck and equipment traffic, loud noise, high pressures, and the potential for a flash fire. These hazards can vary depending on the work being performed.

#### **2. Emergency Muster / Assembly point(s)**

- a. Carbon Storage Solutions – Front Range #1

#### **3. 911 address and GPS coordinates**

- a. Lat/Long: .....40.454964/-104.859761
- b. Legal Description: .....NWSE 26 6N 67W
- c. Address: .....31375 Great Western Drive
- d. Town, State, ZIP: .....Windsor, Colorado, 80550

#### **4. Site Description**

- a. The proposed pad is an CSS location that will have one (1) directional stratigraphic well drilled and cased. No oil and gas production will occur on this proposed pad. No production equipment will be constructed on this proposed pad.

#### **5. Nearby schools and other areas of interest**

- a. The closest school is Windsor Charter Academy, which is 2.5 miles away. The closest residential building unit is more than 2,000 feet from Location. No other areas of interest are near the pad site.

## 6. Directions to Project Locations

- a. From Intersection of HWY 257 and Eastman Park Dr., East to Great Western Drive ..... 1.7 mi.
- b. South on Great Western Drive ..... 0.5 mi.
- c. West on Private Road through Checkpoint ..... 0.1 mi.
- d. South at first opportunity, to Access Road.....0.13 mi.
- e. Access Road to Location ..... ±473 ft.

From the intersection of HWY 257 and Eastman Park Dr. Head East approximately 1.7 miles to Great Western Drive. Turn South on Great Western Drive for approximately 0.5 miles to Private Entrance on West side of the road. Turn into private entrance and proceed past guard checkpoint to first left (south) opportunity. Follow roadway for approximately 0.13 miles past warehouse building to access road on south side of warehouse. Follow Access Road approximately 473 ft to location.

## 7. Location of SDS sheets, Sign-in Sheets, JSAs, and Safety Forms

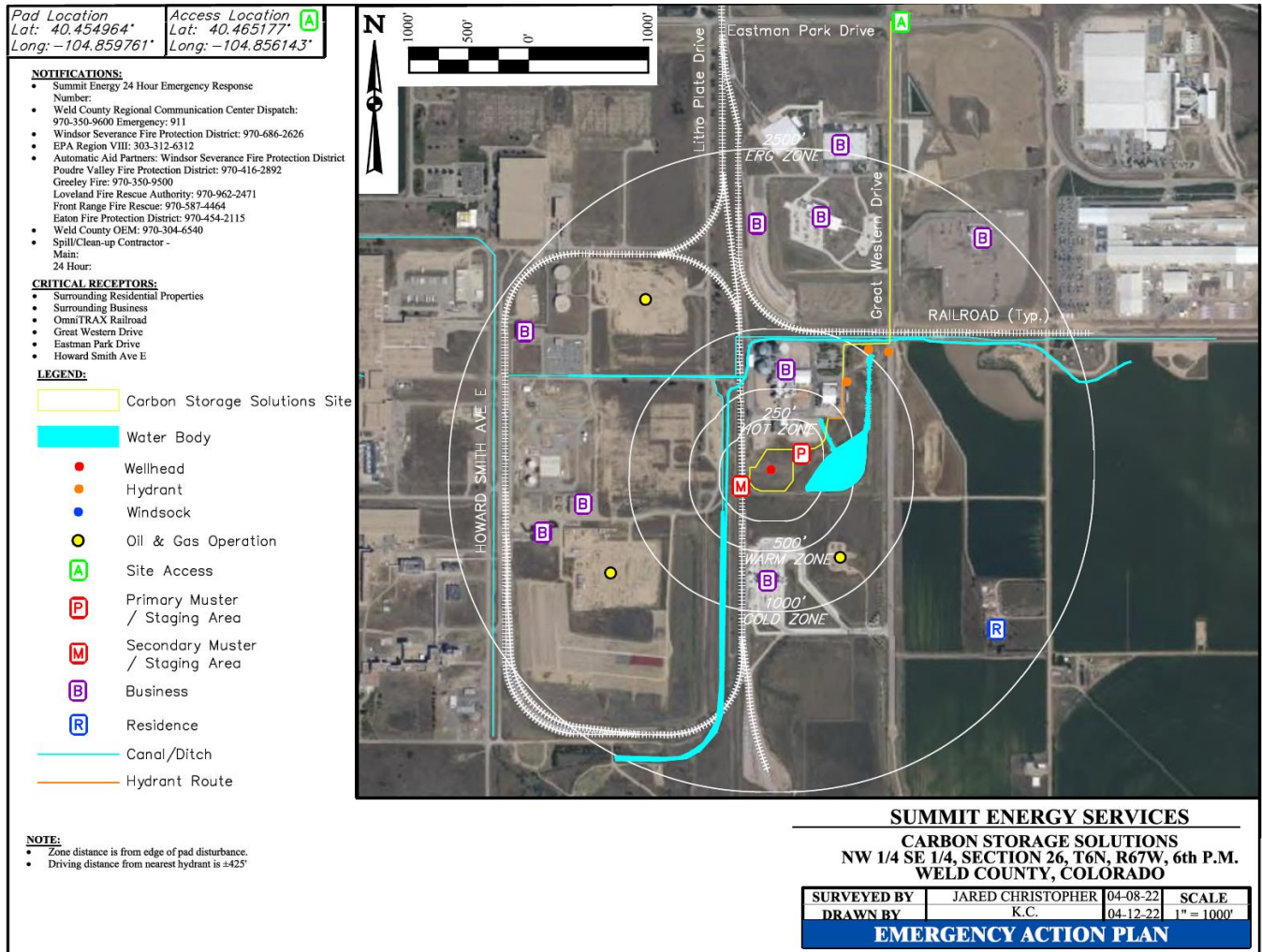
- a. Depending on the operations taking place on location, the chemicals that may be present will vary. Regardless, hazard communication is a critical safety measure and Safety Data Sheets (SDS's) will be available from the CSS representative present or the contractor performing work on location.

During drilling and completion activities all employees and approved visitors to the pad will be required to enter through a security checkpoint at the location entrance where they will be required to sign in and provided with a detailed safety briefing of current operations and all safety precautions that must be adhered to while on location. In addition, all who enter the location must also sign out upon their departure. Security personnel are required to account for all persons entering or leaving location during active operations and in the event of an incident.

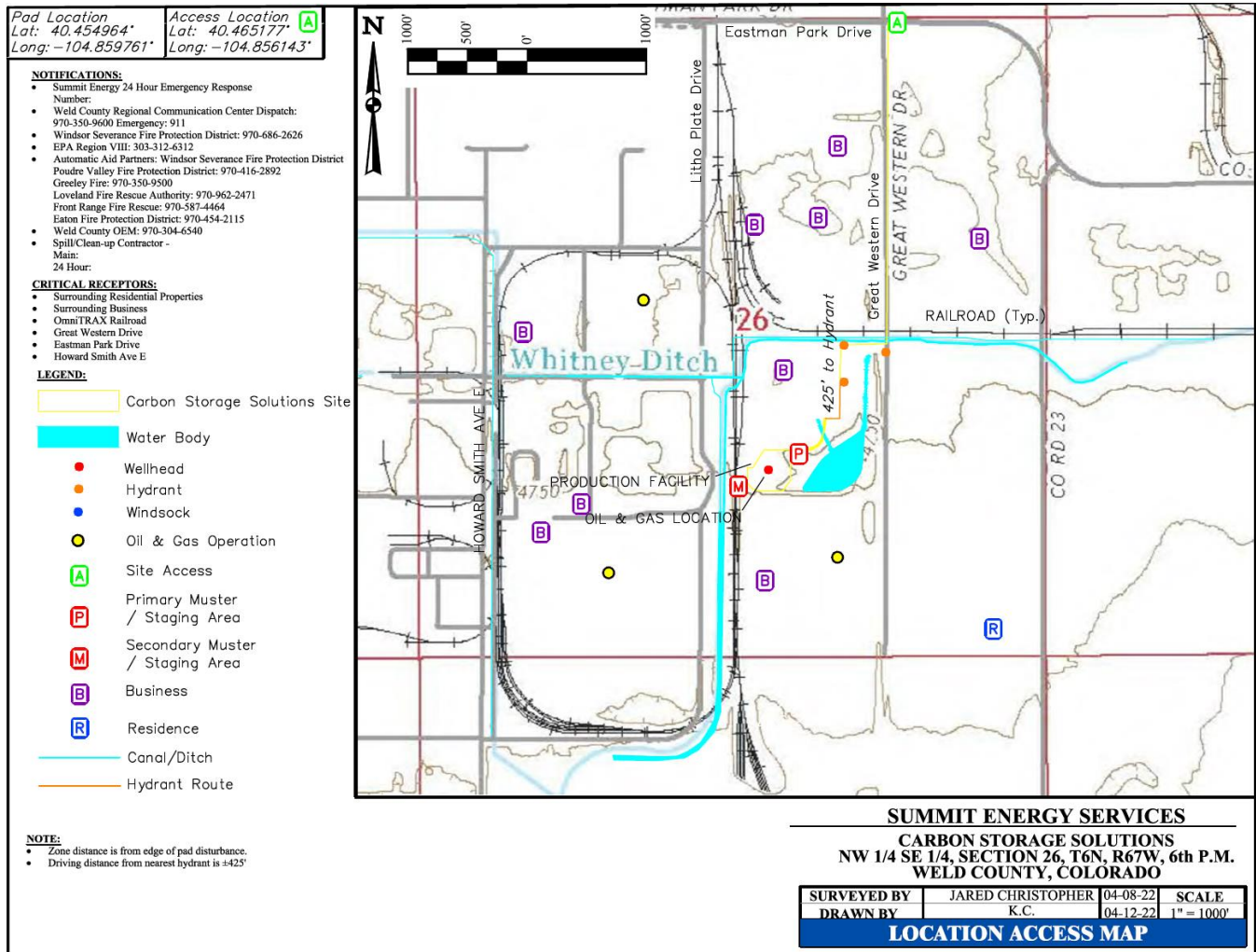
Once drilling and casing activities are finalized, no unauthorized personnel will be allowed on location without first contacting an CSS representative.

## Section 2: Project Area Maps

### 2,000 Foot Buffer



## Project Location Access Map





## Project Muster Area and Helicopter Landing Zone



### Section 3

#### List of Emergency Contacts

##### **1. Carbon Storage Solutions, LLC**

<b>Name</b>	<b>Number</b>
Corporate Office	970-674-2910
Dan Sanders, Vice President	970-590-7263

##### **2. First Responder Contact Information**

<b>Name</b>	<b>Emergency</b>	<b>Number</b>
Windsor Police Department	911	970-674-6400
Windsor Severance Fire Rescue - Station 1	911	970-686-2626
Weld County Sheriff	911	970-356-4015
Weld County Office of Emergency Management		970-304-6540
Colorado State Highway Patrol	911	970-506-4999

##### **3. Regulatory Contacts**

<b>Name</b>	<b>Number</b>
COGCC	303-894-2100
CDPHE	877-518-5608
Colorado Division of Parks & Wildlife	303-291-7227
National Response Center	800-424-8802

##### **4. Medical Facilities**

<b>Name</b>	<b>Number</b>
UCHealth - Windsor Medical Center	970-686-3950
UCHealth Emergency Room – West Greeley	970-392-4320

##### **5. Spill Response Organizations**

<b>Name</b>	<b>Phone</b>
COGCC	303-894-2100
CDPHE	877-518-5608
Weld County	970-400-3579
Power Services Co.	970-590-5313



**6. Fire, explosion, associated with loss of well control**

<b>Name</b>	<b>Number</b>
Windsor Severance Fire Rescue - Station 1	911
UCHealth Emergency Room – West Greeley	970-392-4320
Weld County Office of Emergency Management (Roy Rudisill)	970-350-9600

**7. Government Agencies**

<b>Name</b>	<b>Number</b>
Windsor Police Department	911 or 970-674-6400
Weld County Sheriff's Office	911 or 970-356-4015
COGCC	303-894-2100
CDPHE	877-518-5608
City of Windsor (Shane Hale)	970-674-2400
Weld County (Jason Maxey, LGD)	970-400-3579

**8. Railroad Emergency Response**

<b>Name</b>	<b>Office Phone</b>
Great Western Railway of Colorado	970-372-4310

## **Section 4**

### **Spill Response and Clean Up**

#### **1. Spill Response**

There are multiple types of hydrocarbons which can be spilled during drilling and casing operations. Most commonly spilled are drilling fluids made up of water, diesel and synthetics. Refined petroleum products such as diesel, gasoline, and motor oil spills are less common, but still equally important to mitigate. If a spill is found reportable, it will be mitigated in accordance with COGCC and CDPHE guidelines.

Once a release has been identified, it will be immediately stopped and contained if possible and is safe to do so. When containing a spill; pig blankets, snakes, absorbent materials, or earthen berms will be constructed around the release to keep material from spreading. These materials will be provided by CSS and the contract company and kept on-site. Diligent efforts will be made to minimize contact with live vegetation or open water if release is outside of secondary containment structures.

In the event of a large incident requiring outside assistance, CSS has contracted with Power Services Company. Quandary possesses a working knowledge of oil and gas operations, emergency response and Incident Command.

These regulatory guidelines will be strictly followed by CSS and any contractors operating under CSS guidance during all activities on this proposed well pad.

## Section 5

### Evacuation Information

#### **1. Evacuation Plan Procedures (public)**

The procedure to be used in alerting nearby persons in the event of any occurrence that could pose a threat to life or property will be arranged and completed with public officials in details.

In the event of an actual emergency, the following steps will be immediately taken:

- a. The CSS representative will immediately notify proper authorities, including the sheriff's office, highway patrol, and any other public officials as described above and will enlist their assistance in warning residents and transients in the calculated radius of exposure.
- b. CSS will coordinate with local authorities to warn residents' down-wind of the location and within radius of exposure from the well site. Additional evacuation zones may be necessary as the situation warrants.
- c. The CSS representative will coordinate with appropriate emergency personnel to divert traffic in the vicinity away from the potentially dangerous area. No trespassing and warning signs will be posted at the entrance to the well site.
- d. General:
  - i. The area included within the radius of exposure is the zone with the maximum potential hazard. When it is determined that conditions exist which create an additional area (beyond the initial zone of maximum potential hazard) vulnerable to possible hazard, public areas in the additional hazardous area will be evacuated.
  - ii. In the event of a disaster, after the public areas have been evacuated and traffic stopped, it is expected that local civil authorities will have arrived and within a few hours will have assumed direction of and control of the public, including all public areas. CSS will fully cooperate with these authorities and will exert every effort by careful advice to such authorities to prevent panic or rumors.
  - iii. CSS will dispatch appropriate personnel to the disaster site as soon as possible. The company's personnel will cooperate with and provide such information to civil authorities as they might require.

## **Section 6**

### **Coordination with First Responder Agencies**

1. CSS will communicate drill spud and casing operation dates to the Weld County Office of Emergency Management for coordination/communication with local first responders. These start dates will be provided a minimum of seven (7) business days prior to commencement or change in oil and gas development operations.
2. In the event of an emergency requiring First Responders, Unified Command will be established between the CSS appointed company man on location and First Responders present. Unified Command post will be established based on conditions present at the time of the incident.

## Tactical Response Card

**Location Address** – 31375 Great Western Drive, Windsor CO 80550

**Lat:** 40.454964 **Long:** -104.859761

### **Notifications**

1. **National Response Center:**
  - a. 800-424-8802
2. **MGE 24-Hour Hotline:**
  - a. 720-545-5717
3. **Colorado Department of Natural Resources:**
  - a. 303-866-3311
4. **Weld County OEM:**
  - a. 970-350-9600
5. **Colorado Oil and Gas Conservation Commission (COGCC):**
  - a. 303-894-2100
6. **COGCC Field Supervisors:**
  - a. 303-894-2100
7. **Colorado Dept of Public Health and Environment:**
  - a. 877-518-5608

### **Response Objectives**

Ensure safety of the public, first responders, MGE employees, and contractors  
Minimize the impact to the environment and local community. Contain and recover released product to the extent possible.

### **Critical Receptors**

Front Range Energy Ethanol Plant is located 308' North.

Note: This Tactical Response Card is a reference tool and is intended to provide guidance during an actual event or exercise. Placement of resources may need to be adjusted according to environmental variables. It is the responsibility of emergency response personnel to be trained in response and to be able to make adjustments to the card as needed.

